

NOTES :

1. ALL DIMENSIONS ARE IN METERS UNLESS OTHERWISE SPECIFIED.
2. ALL EXTERNAL WALLS ARE TO BE CONCRETE WITH INSULATION UNLESS OTHERWISE SPECIFIED.
3. ALL INTERNAL WALLS ARE TO BE CONCRETE UNLESS OTHERWISE SPECIFIED.
4. ALL DOORS ARE TO BE AS PER THE ARCHITECTURAL DRAWINGS UNLESS OTHERWISE SPECIFIED.
5. ALL WINDOWS ARE TO BE AS PER THE ARCHITECTURAL DRAWINGS UNLESS OTHERWISE SPECIFIED.
6. THE FINISHES ARE TO BE AS PER THE ARCHITECTURAL DRAWINGS UNLESS OTHERWISE SPECIFIED.

DOOR & WINDOW SCHEDULE			HEIGHT		
LEGEND	WIDTH	DEPTH	SILL	LINTEL	TOP
D1	1350	2400	---	---	---
D2	1350	2400	---	---	---
D3	1000	2400	---	---	---
D4	900	2400	---	---	---
D5	2000	2400	---	---	---
D6	1350	2400	---	---	---
D7	1350	2400	---	---	---
D8	1350	2400	---	---	---
D9	1350	2400	---	---	---
D10	1350	2400	---	---	---
D11	1350	2400	---	---	---
D12	1350	2400	---	---	---
D13	1350	2400	---	---	---
D14	1350	2400	---	---	---
D15	1350	2400	---	---	---
D16	1350	2400	---	---	---
D17	1350	2400	---	---	---
D18	1350	2400	---	---	---
D19	1350	2400	---	---	---
D20	1350	2400	---	---	---
D21	1350	2400	---	---	---
D22	1350	2400	---	---	---
D23	1350	2400	---	---	---
D24	1350	2400	---	---	---
D25	1350	2400	---	---	---
D26	1350	2400	---	---	---
D27	1350	2400	---	---	---
D28	1350	2400	---	---	---
D29	1350	2400	---	---	---
D30	1350	2400	---	---	---
D31	1350	2400	---	---	---
D32	1350	2400	---	---	---
D33	1350	2400	---	---	---
D34	1350	2400	---	---	---
D35	1350	2400	---	---	---
D36	1350	2400	---	---	---
D37	1350	2400	---	---	---
D38	1350	2400	---	---	---
D39	1350	2400	---	---	---
D40	1350	2400	---	---	---
D41	1350	2400	---	---	---
D42	1350	2400	---	---	---
D43	1350	2400	---	---	---
D44	1350	2400	---	---	---
D45	1350	2400	---	---	---
D46	1350	2400	---	---	---
D47	1350	2400	---	---	---
D48	1350	2400	---	---	---
D49	1350	2400	---	---	---
D50	1350	2400	---	---	---
D51	1350	2400	---	---	---
D52	1350	2400	---	---	---
D53	1350	2400	---	---	---
D54	1350	2400	---	---	---
D55	1350	2400	---	---	---
D56	1350	2400	---	---	---
D57	1350	2400	---	---	---
D58	1350	2400	---	---	---
D59	1350	2400	---	---	---
D60	1350	2400	---	---	---
D61	1350	2400	---	---	---
D62	1350	2400	---	---	---
D63	1350	2400	---	---	---
D64	1350	2400	---	---	---
D65	1350	2400	---	---	---
D66	1350	2400	---	---	---
D67	1350	2400	---	---	---
D68	1350	2400	---	---	---
D69	1350	2400	---	---	---
D70	1350	2400	---	---	---
D71	1350	2400	---	---	---
D72	1350	2400	---	---	---
D73	1350	2400	---	---	---
D74	1350	2400	---	---	---
D75	1350	2400	---	---	---
D76	1350	2400	---	---	---
D77	1350	2400	---	---	---
D78	1350	2400	---	---	---
D79	1350	2400	---	---	---
D80	1350	2400	---	---	---
D81	1350	2400	---	---	---
D82	1350	2400	---	---	---
D83	1350	2400	---	---	---
D84	1350	2400	---	---	---
D85	1350	2400	---	---	---
D86	1350	2400	---	---	---
D87	1350	2400	---	---	---
D88	1350	2400	---	---	---
D89	1350	2400	---	---	---
D90	1350	2400	---	---	---
D91	1350	2400	---	---	---
D92	1350	2400	---	---	---
D93	1350	2400	---	---	---
D94	1350	2400	---	---	---
D95	1350	2400	---	---	---
D96	1350	2400	---	---	---
D97	1350	2400	---	---	---
D98	1350	2400	---	---	---
D99	1350	2400	---	---	---
D100	1350	2400	---	---	---

UNDESIGNED AND UNCHECKED BY THE ARCHITECT. THE ARCHITECT'S RESPONSIBILITY IS LIMITED TO THE DESIGN AND DRAWING OF THE BUILDING. THE ARCHITECT DOES NOT WARRANT THE ACCURACY OF THE INFORMATION PROVIDED HEREIN. THE ARCHITECT'S LIABILITY IS LIMITED TO THE DESIGN AND DRAWING OF THE BUILDING. THE ARCHITECT DOES NOT WARRANT THE ACCURACY OF THE INFORMATION PROVIDED HEREIN.

JISHU PAUL
 B.Tech (Civil), M.E (Geo-techn)
 27/303, B.V. Road, G.T. Road
 CHENNAI - 600 008, INDIA
 22/RISUN/6-1/2016-17 REGISTERED ENGINEER

SANJIV PAREKH
 BSCA BCS, B.E. (1984-85)
 R.C. E. NO. 104111-K, M.C.
 REGISTERED STRUCTURAL
 ENGINEER
 688/104
 CHENNAI - 600 008

MANISH KUMAR SENGUPTA
 B.Tech (Civil), M.E (Geo-techn)
 27/303, B.V. Road, G.T. Road
 CHENNAI - 600 008, INDIA
 22/RISUN/6-1/2016-17 REGISTERED ENGINEER

SHREERAM PROMOTERS PVT. LTD.
 30/3, S. S. Road, Anna Nagar
 CHENNAI - 600 024, INDIA

SHREERAM PROMOTERS PVT. LTD.
 30/3, S. S. Road, Anna Nagar
 CHENNAI - 600 024, INDIA

SHREERAM PROMOTERS PVT. LTD.
 30/3, S. S. Road, Anna Nagar
 CHENNAI - 600 024, INDIA

SHREERAM PROMOTERS PVT. LTD.
 30/3, S. S. Road, Anna Nagar
 CHENNAI - 600 024, INDIA

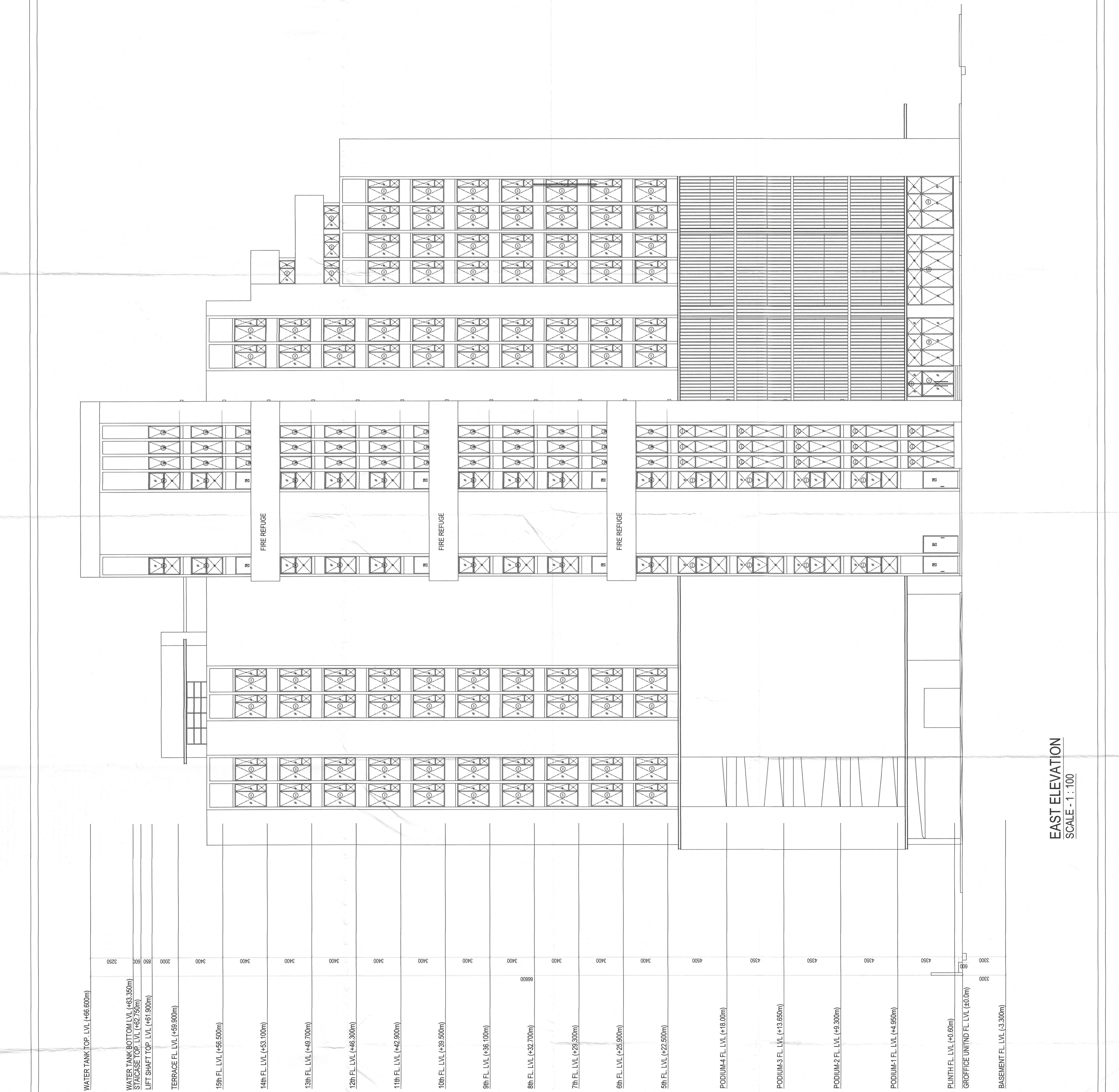
SHREERAM PROMOTERS PVT. LTD.
 30/3, S. S. Road, Anna Nagar
 CHENNAI - 600 024, INDIA

SHREERAM PROMOTERS PVT. LTD.
 30/3, S. S. Road, Anna Nagar
 CHENNAI - 600 024, INDIA

SHREERAM PROMOTERS PVT. LTD.
 30/3, S. S. Road, Anna Nagar
 CHENNAI - 600 024, INDIA

SHREERAM PROMOTERS PVT. LTD.
 30/3, S. S. Road, Anna Nagar
 CHENNAI - 600 024, INDIA

SHREERAM PROMOTERS PVT. LTD.
 30/3, S. S. Road, Anna Nagar
 CHENNAI - 600 024, INDIA



EAST ELEVATION
 SCALE - 1 : 100



TITLE :
 EAST ELEVATION

PROJECT :
 PROPOSED PARTLY BIG+KV STORED (69.9 MT HEIGHT) & KMC BUILDING RULES 2008 READ WITH RULE 99A(1) (2) OF KMC BUILDING RULES 2009 AT PREMISES NO. 1898, KMC BUILDING, 100007, BANGALORE. OWNER: SHREERAM PROMOTERS PVT. LTD. PROJECT NO: DAG NO. R.S.391,392,393, KHATHAN NO. 193,194,201 & 204.

DRAWN BY :
 A.K.N

SCALE :
 1:100

DATE :
 26.09.2019

SHEET NO. 14 OF 15

DEALT BY :
 N.S.R

1086-AR-PDR-MUN-0002