

NOTES:

- ALL DIMENSIONS ARE IN METERS UNLESS OTHERWISE STATED.
- THE STRUCTURE SHALL BE DESIGNED TO RESIST ALL APPLICABLE LOADS AS PER THE NATIONAL BUILDING CODE OF THE PHILIPPINES (NBCP) AND THE NATIONAL ENGINEERING REGULATORY BOARD (NERB) REQUIREMENTS.
- ALL STRUCTURAL MEMBERS SHALL BE DESIGNED TO RESIST ALL APPLICABLE LOADS INCLUDING FLOOR LIVE LOADS, DEAD LOADS, WIND LOADS, SEISMIC LOADS AND OTHER LOADS AS PER THE NBCP AND NERB REQUIREMENTS.
- ALL STRUCTURAL MEMBERS SHALL BE DESIGNED TO RESIST ALL APPLICABLE LOADS INCLUDING FLOOR LIVE LOADS, DEAD LOADS, WIND LOADS, SEISMIC LOADS AND OTHER LOADS AS PER THE NBCP AND NERB REQUIREMENTS.

LEGEND	WIDTH	HEIGHT	SILL LEVEL	SHUTTER	DOOR / WINDOW TYPE
D1	1350	2100	2100	---	DOOR
D2	1500	2400	2400	---	DOOR
D3	1000	2400	2400	---	DOOR
D4	900	2400	2400	---	DOOR
D5	2000	2400	2400	---	DOOR
W1	1800	2400	2400	---	WINDOW
W2	1800	2400	2400	---	WINDOW
W3	1800	2400	2400	---	WINDOW
W4	1800	2400	2400	---	WINDOW
W5	1800	2400	2400	---	WINDOW
W6	1800	2400	2400	---	WINDOW
W7	1800	2400	2400	---	WINDOW
W8	1800	2400	2400	---	WINDOW
W9	1800	2400	2400	---	WINDOW
W10	1800	2400	2400	---	WINDOW
W11	1800	2400	2400	---	WINDOW
W12	1800	2400	2400	---	WINDOW
W13	1800	2400	2400	---	WINDOW
W14	1800	2400	2400	---	WINDOW
W15	1800	2400	2400	---	WINDOW
W16	1800	2400	2400	---	WINDOW
W17	1800	2400	2400	---	WINDOW
W18	1800	2400	2400	---	WINDOW
W19	1800	2400	2400	---	WINDOW
W20	1800	2400	2400	---	WINDOW
W21	1800	2400	2400	---	WINDOW
W22	1800	2400	2400	---	WINDOW
W23	1800	2400	2400	---	WINDOW
W24	1800	2400	2400	---	WINDOW
W25	1800	2400	2400	---	WINDOW
W26	1800	2400	2400	---	WINDOW
W27	1800	2400	2400	---	WINDOW
W28	1800	2400	2400	---	WINDOW
W29	1800	2400	2400	---	WINDOW
W30	1800	2400	2400	---	WINDOW
W31	1800	2400	2400	---	WINDOW
W32	1800	2400	2400	---	WINDOW
W33	1800	2400	2400	---	WINDOW
W34	1800	2400	2400	---	WINDOW
W35	1800	2400	2400	---	WINDOW
W36	1800	2400	2400	---	WINDOW
W37	1800	2400	2400	---	WINDOW
W38	1800	2400	2400	---	WINDOW
W39	1800	2400	2400	---	WINDOW
W40	1800	2400	2400	---	WINDOW
W41	1800	2400	2400	---	WINDOW
W42	1800	2400	2400	---	WINDOW
W43	1800	2400	2400	---	WINDOW
W44	1800	2400	2400	---	WINDOW
W45	1800	2400	2400	---	WINDOW
W46	1800	2400	2400	---	WINDOW
W47	1800	2400	2400	---	WINDOW
W48	1800	2400	2400	---	WINDOW
W49	1800	2400	2400	---	WINDOW
W50	1800	2400	2400	---	WINDOW
W51	1800	2400	2400	---	WINDOW
W52	1800	2400	2400	---	WINDOW
W53	1800	2400	2400	---	WINDOW
W54	1800	2400	2400	---	WINDOW
W55	1800	2400	2400	---	WINDOW
W56	1800	2400	2400	---	WINDOW
W57	1800	2400	2400	---	WINDOW
W58	1800	2400	2400	---	WINDOW
W59	1800	2400	2400	---	WINDOW
W60	1800	2400	2400	---	WINDOW

IRISANI P.A.
B.Tech (Civil) M.E. (Struct)
R.M.C. Reg. No. 0.77/22
27 RAISON/C-7/2016 (SIGNATURE OF REG. TECH. ENGINEER)

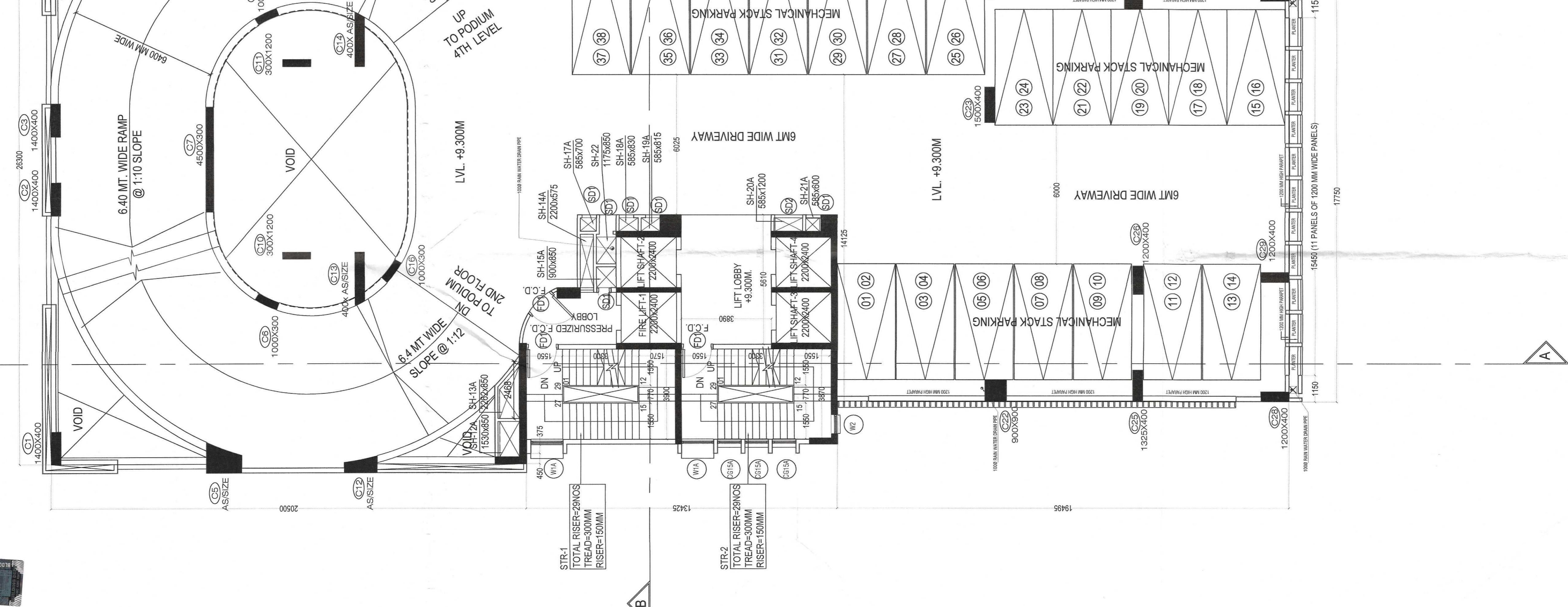
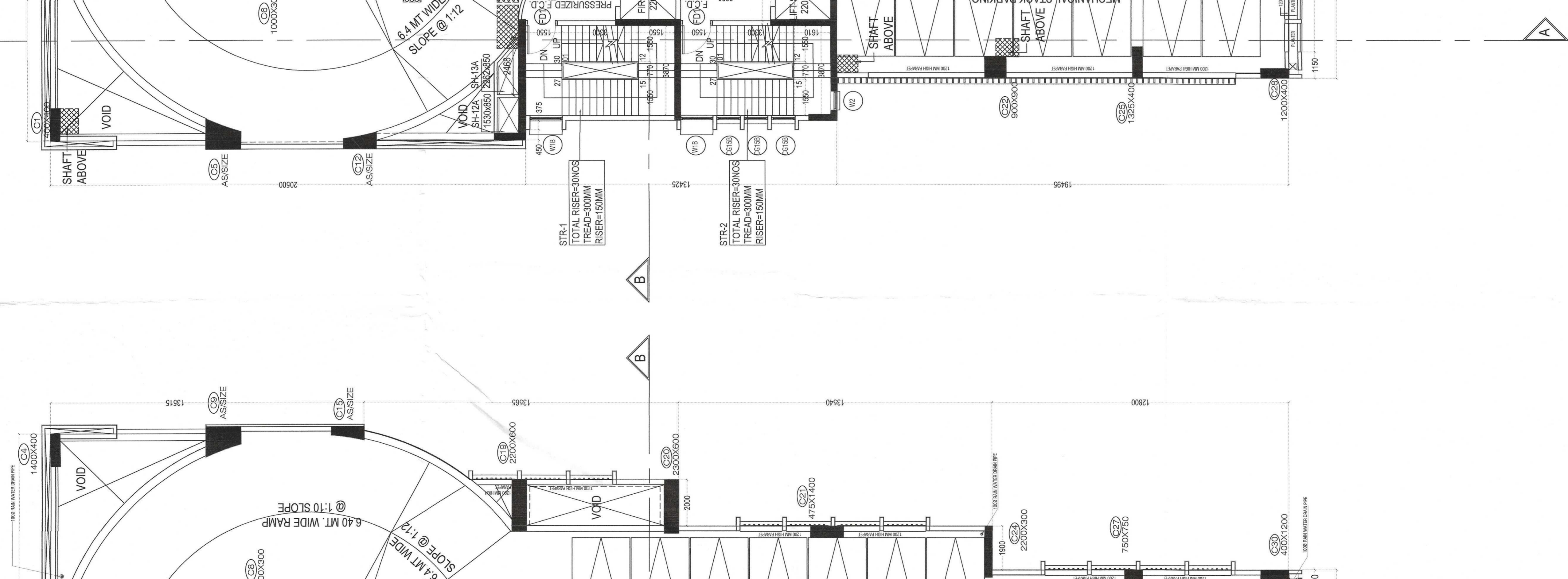
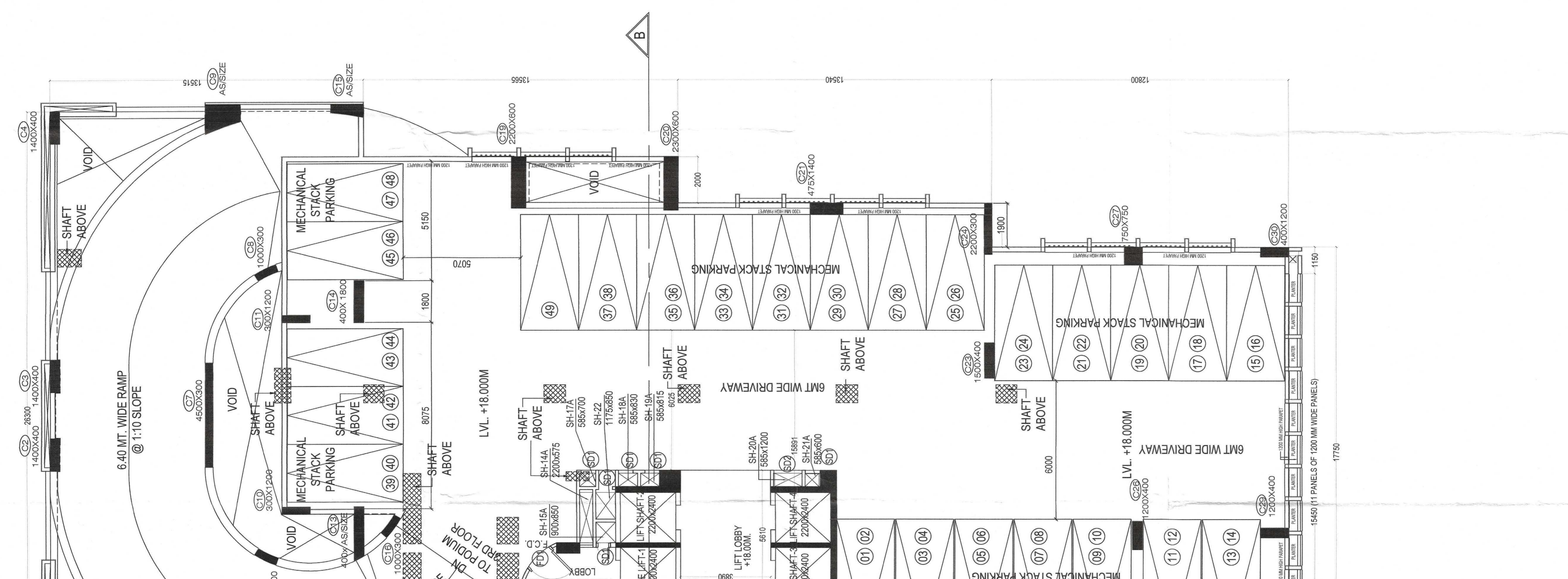
SAMUEL K. BAKER
REGISTERED PROFESSIONAL ARCHITECT
PRACTICE ADDRESS: 1404/100 EAST AVENUE, SUITE 101, LAGUNA HILLS, CALIFORNIA 92653, U.S.A.

SAMUEL K. BAKER
REGISTERED PROFESSIONAL ARCHITECT
PRACTICE ADDRESS: 1404/100 EAST AVENUE, SUITE 101, LAGUNA HILLS, CALIFORNIA 92653, U.S.A.

SHAMIR K. MOY
REGISTERED PROFESSIONAL ARCHITECT
PRACTICE ADDRESS: 1404/100 EAST AVENUE, SUITE 101, LAGUNA HILLS, CALIFORNIA 92653, U.S.A.

SHAKEPEARE PROMOTORS PVT. LTD.
ASHOKA BUSINESS SYSTEMS PVT. LTD.
CALASAR BANGALAY PVT. LTD.
RISHI REV BULLIERS PVT. LTD.
SUN CLUB PVT. BANGALAY PVT. LTD.
STATE TRACAPPT. LTD.
RISING VANDYS PVT. LTD.
DEBRUP VANDYS PVT. LTD.

SHAKEPEARE PROMOTORS PVT. LTD.
ASHOKA BUSINESS SYSTEMS PVT. LTD.
CALASAR BANGALAY PVT. LTD.
RISHI REV BULLIERS PVT. LTD.
SUN CLUB PVT. BANGALAY PVT. LTD.
STATE TRACAPPT. LTD.
RISING VANDYS PVT. LTD.
DEBRUP VANDYS PVT. LTD.



LEGEND	WIDTH	DEPTH	DETAILS / DESCRIPTIONS
SH-12A	1530	850	FOR D.G. SHAFT
SH-13A	2262	850	FOR STAIRCASE PRESSURIZATION FOR LIFT LOBBY
SH-14A	2200	575	PRESSURIZATION
SH-15A	900	850	FOR F.H.R. SHAFT
SH-17A	585	700	FOR ELECTRICAL
SH-18A	585	830	FOR PHE
SH-19A	585	815	FOR LV
SH-20A	585	1200	FOR ELECTRICAL
SH-21A	585	600	FOR F.H.R. SHAFT
SH-22	1175	850	FOR P.H.E SHAFT

PODIUM - 4TH LEVEL
SCALE - 1 : 100

PODIUM - 3RD LEVEL
SCALE - 1 : 100

TITLE: PODIUM 3 LEVEL PLAN & PODIUM 4 LEVEL PLAN

PROJECT: PROPOSED PARTLY B-G-K-V STORED (88.9 MT HEIGHT) BUSINESS BUILDING COMPRISING US BSA OF KMC ACT 1980 KMC BUILDING RULES 2009 AT PREMISES NO. (X) UNDER LASHKARHAT, WARD NO. 07, BOROUGH OFFICE - XII, UNDER D.A.S. NO. S-535136363, 14/4 PANA INC., 02/14, 2013 S.A.

PREPARED BY: S. K. MOY
CHECKED BY: S. K. MOY
DATE: 26.09.2019
SCALE: 1:100
SHEET NO.: 5 OF 15

DRAWN BY: S. K. MOY
DATE: 26.09.2019
SCALE: 1:100
SHEET NO.: 5 OF 15

PROJECT: PROPOSED PARTLY B-G-K-V STORED (88.9 MT HEIGHT) BUSINESS BUILDING COMPRISING US BSA OF KMC ACT 1980 KMC BUILDING RULES 2009 AT PREMISES NO. (X) UNDER LASHKARHAT, WARD NO. 07, BOROUGH OFFICE - XII, UNDER D.A.S. NO. S-535136363, 14/4 PANA INC., 02/14, 2013 S.A.

PREPARED BY: S. K. MOY
CHECKED BY: S. K. MOY
DATE: 26.09.2019
SCALE: 1:100
SHEET NO.: 5 OF 15