

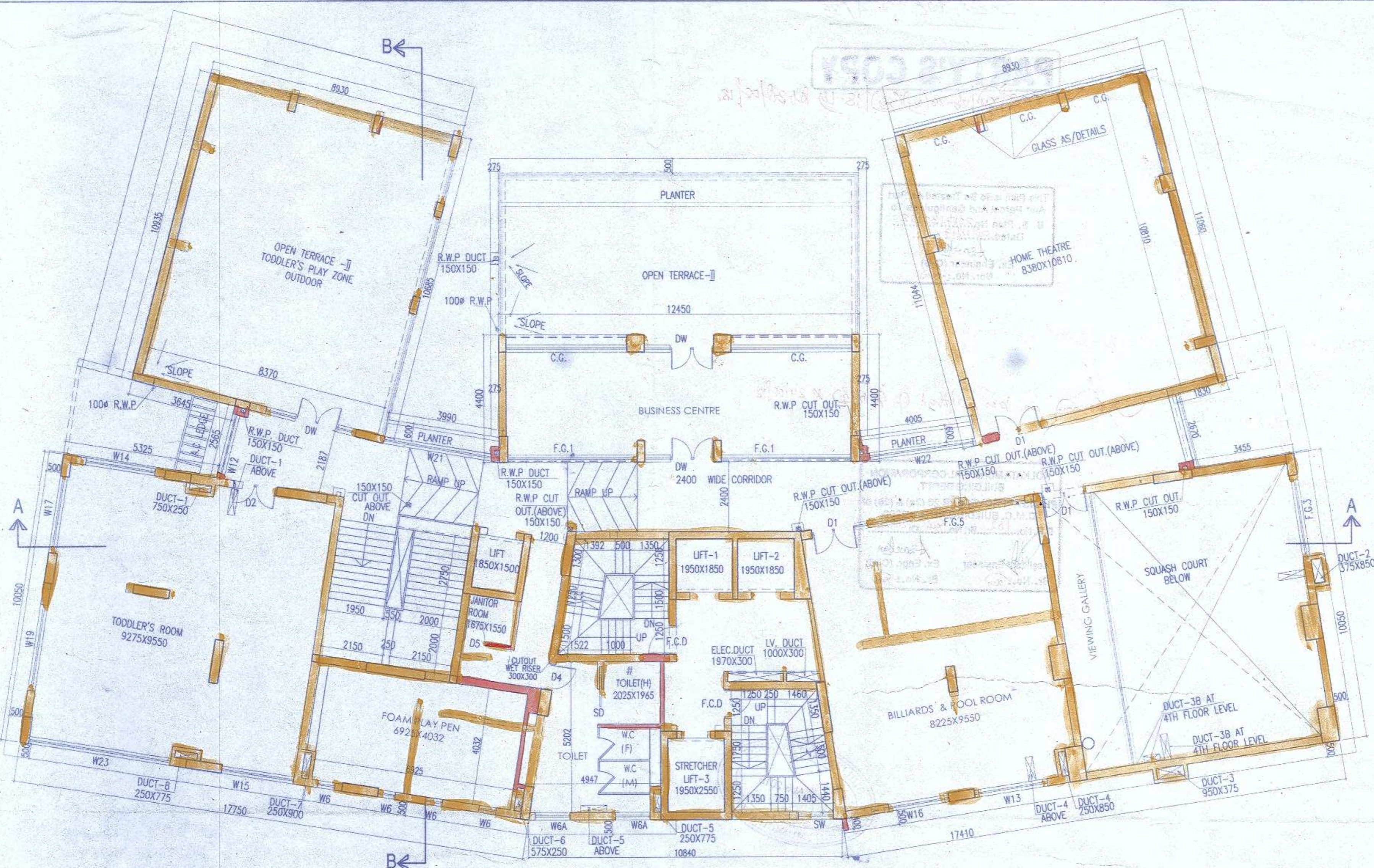
ONLY GROUND FLOOR (CLUB)

| NO | SILL | LINTEL | SIZE |
|----|------|--------|-----------|
| W1 | 350 | 2450 | 2100X2450 |
| W2 | 350 | 2450 | 3800X2450 |
| W3 | 350 | 2450 | 1200X2450 |

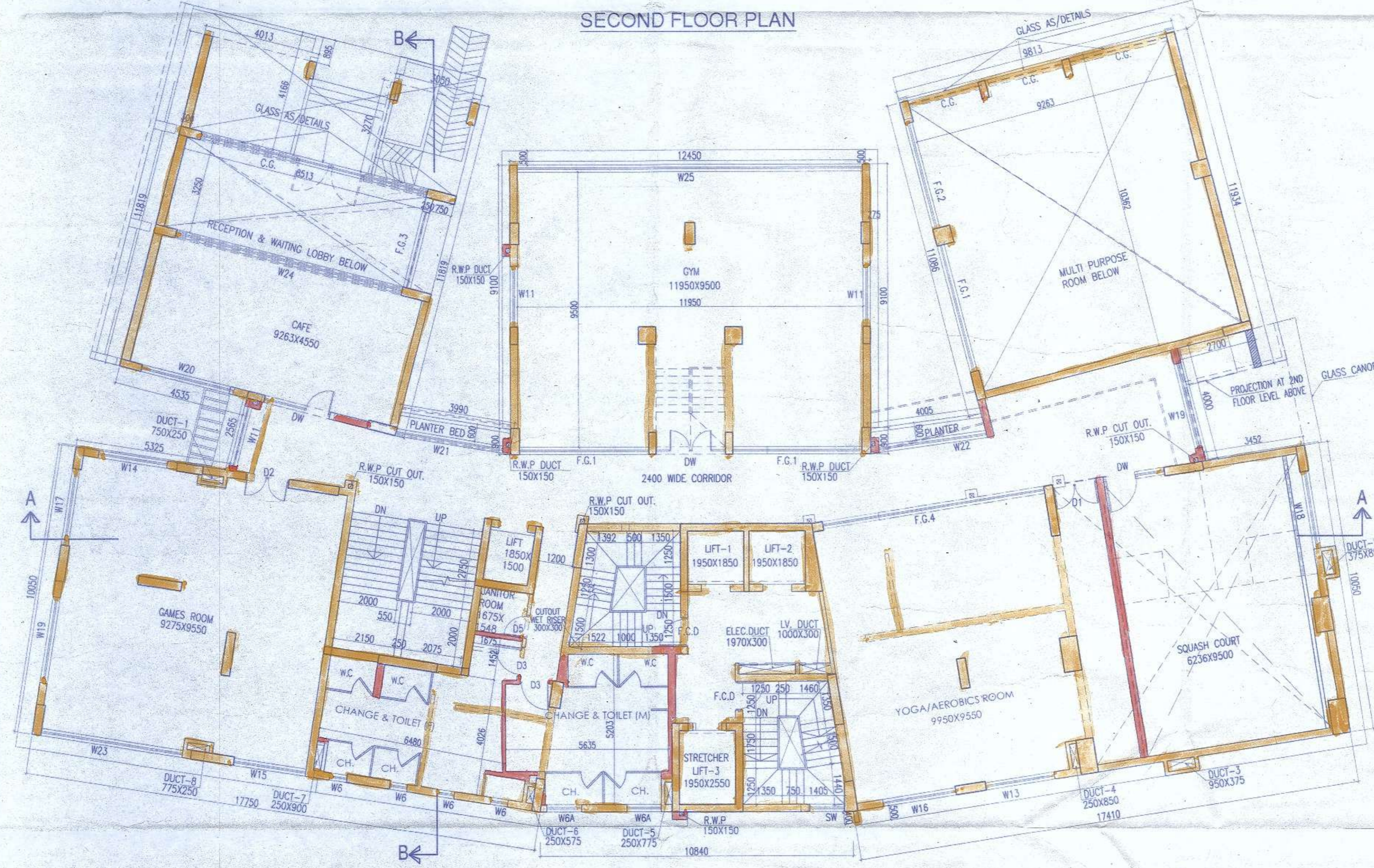
ALL FLOOR (CLUB)

| | | | |
|-------|------|------|---------------|
| D | | 2450 | 2400X2450 |
| D1 | | 2450 | 1525X2450 |
| D2 | | 2450 | 1500X2450 |
| D3 | | 2450 | 1000X2450 |
| D4 | | 2450 | 800X2450 |
| D5 | | 2450 | 800X2450 |
| SD | | 2450 | 1200X2450 |
| W5 | 1400 | 2450 | 1200X1050 |
| W5A | 1400 | 2450 | 800X1050 |
| W6 | 1550 | 2450 | 600X900 |
| W6A | 1550 | 2450 | 1200X900 |
| W11 | 350 | 2450 | 2100X2100 |
| W12 | 350 | 2450 | 2290X2100 |
| W13 | 350 | 2450 | 2385X2100 |
| W14 | 350 | 2450 | 2400X2100 |
| W15 | 350 | 2450 | 2500X2100 |
| W16 | 350 | 2450 | 2550X2100 |
| W17 | 350 | 2450 | 2675X2100 |
| W18 | 350 | 2450 | 2700X2100 |
| W19 | 350 | 2450 | 3000X2100 |
| W20 | 350 | 2450 | 3150X2100 |
| W21 | 350 | 2450 | 3714X2100 |
| W22 | 350 | 2450 | 3727X2100 |
| W23 | 350 | 2450 | 4925X2100 |
| W24 | 350 | 2450 | 8060X2100 |
| W25 | 350 | 2450 | 11950X2100 |
| SW | 350 | 2450 | 1200X1800 |
| DW | | 2450 | AS/SITE/2450 |
| F.C.D | | 2450 | 1000X2450 |
| FG1 | 350 | 2450 | 4750X2100 |
| FG2 | 350 | 2450 | 3625X2100 |
| FG3 | 350 | 2450 | 2750X2100 |
| FG4 | 350 | 2450 | 7750X2100 |
| FG5 | 350 | 2450 | 5825X2100 |
| C.G | | | AS PER DETAIL |

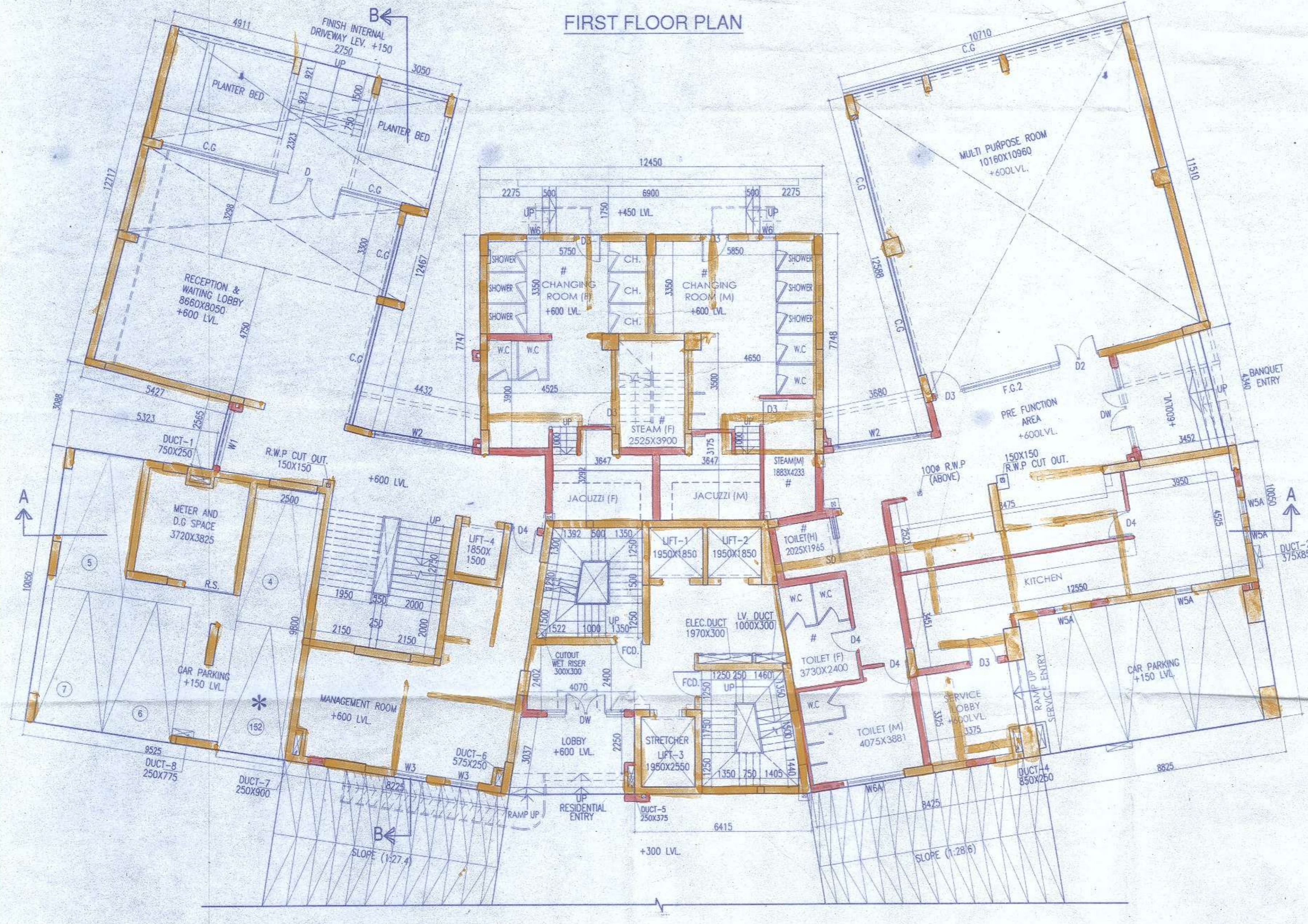
ARTIFICIAL LIGHTING & MECHANICAL VENTILATION
* OPEN CAR PARKING



SECOND FLOOR PLAN



FIRST FLOOR PLAN



GROUND FLOOR PLAN

- For 1. Clarity Barter Pvt. Ltd. 2. Himadri Triup Pvt. Ltd. 3. Kallindi Agency Pvt. Ltd. 4. Anurag Enclave Pvt. Ltd. 5. Anurag Hirise Pvt. Ltd. 6. Central Consultant Pvt. Ltd. 7. Marichand Triup Pvt. Ltd. 8. Siddharth Advisory Services Pvt. Ltd. 9. Uplink Commercial Pvt. Ltd. 10. Umabala Infrastructure Pvt. Ltd. 11. Kizana Triup Pvt. Ltd. 12. Shree Vinayak Villa Pvt. Ltd. 13. Unabala Hirise Pvt. Ltd. 14. Kyal Promoters Pvt. Ltd. 15. Kyal Hirise Pvt. Ltd. 16. Kyal Real Estate Pvt. Ltd. 17. Kyal Residency Pvt. Ltd. 18. Kyal Complex Pvt. Ltd. 19. Kyal Restora Pvt. Ltd. 20. Lakshya Distributors Pvt. Ltd. By their Constituted Attorney
- A. U. S.* (Constituted Attorney)
- For 21. Shreevil Distributors Pvt. Ltd. 22. Pannama Triup Pvt. Ltd. 23. Steadfast Triup Pvt. Ltd. 24. Liberal Barter Pvt. Ltd. 25. Shri Barter Pvt. Ltd. 26. Lily Advisory Services Pvt. Ltd. 27. Shreevil Advisory Pvt. Ltd. 28. Kyal Housing Pvt. Ltd. 29. Rishi Complex Pvt. Ltd. 30. Rishi Enclave Pvt. Ltd. 31. Anchal Barter Pvt. Ltd. 32. Adarsh Goods Pvt. Ltd. 33. Akshay Goods Pvt. Ltd. 34. Anmol Barter Pvt. Ltd. 35. Anubhav Sales Pvt. Ltd. 36. Asha Barter Pvt. Ltd. 37. Compare Vanija Pvt. Ltd. 38. Gurukul Vyapar Pvt. Ltd. 39. Mantra Vyapar Pvt. Ltd. 40. Megamart Merchants Pvt. Ltd. By their Constituted Attorney
- A. U. S.* (Constituted Attorney)
- For 41. Mumpoo Merchants Pvt. Ltd. 42. Navya Commercial Pvt. Ltd. 43. Piyush Vinayak Pvt. Ltd. 44. Prakash Vyapar Pvt. Ltd. 45. Praman Distributors Pvt. Ltd. 46. Prerash Vyapar Pvt. Ltd. 47. Prithiba Vinayak Pvt. Ltd. 48. Prabh Merchants Pvt. Ltd. 49. Rocket Vanija Pvt. Ltd. 50. Samay Barter Pvt. Ltd. 51. Sanga Vinayak Pvt. Ltd. 52. Sarvatham Goods Pvt. Ltd. 53. Sensitive Vyapar Pvt. Ltd. 54. Shree Vinayak Pvt. Ltd. 55. Sparsh Vinayak Pvt. Ltd. 56. Uppala Distributors Pvt. Ltd. 57. Vertical Vinayak Pvt. Ltd. 58. Creek Vanija Pvt. Ltd. 59. Herank Consultants Pvt. Ltd. 60. Innovative Vinayak Pvt. Ltd. By their Constituted Attorney
- A. U. S.* (Constituted Attorney)
- For 61. Snowfall Vinayak Pvt. Ltd. 62. Premium Agencies Pvt. Ltd. 63. Greenline Tie-Up Pvt. Ltd. 64. Innoce Suppliers Pvt. Ltd. 65. Alankar Vintrade Pvt. Ltd. 66. Fairjan Marketing Pvt. Ltd. 67. Shreevil Suppliers Pvt. Ltd. 68. Everest Vincom Pvt. Ltd. 69. Sunlight Tradelines Pvt. Ltd. 70. Karishma Tie-Up Pvt. Ltd. 71. Goldmine Distributors Pvt. Ltd. 72. P. S. Ins Pvt. Ltd. 73. Shalja Developers Pvt. Ltd. 74. Shalja Infrastructure Developers Pvt. Ltd. 75. Uday Infotech Pvt. Ltd. By their Constituted Attorney
- A. U. S.* (Constituted Attorney)

SIGNATURE OF OWNER

CERTIFICATE OF STRUCTURAL ENGINEER.

THIS IS TO CERTIFY THAT THE STRUCTURAL DESIGN AND DRAWINGS OF BOTH FOUNDATION AND SUPER STRUCTURE OF THE BUILDING HAS BEEN MADE BY ME CONSIDERING ALL POSSIBLE LOADS INCLUDING THE SEISMIC LOAD AS PER THE NATIONAL BUILDING CODE OF INDIA AND CERTIFIED THAT IT IS SAFE AND STABLE IN ALL RESPECTS. SOIL TEST REPORT IS PREPARED BY M/S BSE ENGINEERS OF '74/1', SULTAN ALAM ROAD, KOLKATA-700033

SANJIV J. PAREKH
M.E (STRUCT), B.C.E., PCCGM,
C (ENG)-1, MSc, ASCE, FIE (F-018292-4)
E.S. No. 104 (I) K.M.C.C.

SIGNATURE OF STRUCTURAL ENGG.

SANJIB GUHA
BSC B.C.E. (F-115864-5)
CHARTERED ENGINEER
REGISTERED STRUCTURAL
REVIEWER 88/10 K.M.C.C.

SIGNATURE OF STRUCTURAL REVIEWER.

CERTIFICATE OF ARCHITECT.

I DO HEREBY CERTIFY WITH FULL RESPONSIBILITY THAT THE BUILDING PLAN HAS BEEN DRAWN UP AS PER K.M.C. BUILDING RULE 2009 AS AMENDED FROM TIME TO TIME THAT THE WIDTH OF THE ABUTTING ROAD CONFORM WITH THE PLAN AND IT IS A BUILDABLE SITE NOT A TANK OR A FILLED UP TANK. THE SITE PLAN KEY PLAN AGREES WITH THE SITE. THE PLOT IS DEMARCATED BY BOUNDARY WALLS & MEASUREMENTS TALLY WITH THE REGD. DEED PLAN. THE EXISTING STRUCTURE AS SHOWN FULLY OCCUPIED BY OWNERS AS PER OWNERS UNDERTAKING.

JAY PRAKASH BHARAT KUMAR AGRAWAL
B. Arch., A.I.I.A.
Reg. No. CA / 86 / 10098
ARCHITECT (S. NO. - 324)

SIGNATURE OF ARCHITECT.

TITLE:
GROUND FLOOR PLAN, FIRST FLOOR PLAN AND SECOND FLOOR PLAN
BLOCK - 1

PROJECT:
PLAN SHOWING CHANGES U/R 28(2a) & (2b) OF KMC BUILDING RULE-2009 OF RESIDENTIAL COMPLEX WITH BLOCK-1 (G-X), BLOCK-2 TO 4 (B+G-XII) AND BLOCK-5 (B+G-XI) AT PREMISES NO. 49A, MONMOHAN BANERJEE ROAD, KOLKATA-700 038. WARD NO. - 118, BOROUG - XIII, P.S - BEHALA, SANCTIONED VIDE B.P. NO.2017130182 DATED 16/12/2017, SUPERSEEDING B.P. NO. 2015130048 DATED 18/05/2015

PARTY'S COPY

0087(xu)ub-26(2u)629 18-19 & 20/08/18.

This Plan is To Be Treated As Part
And Parcel And Contiguous To
B. S. Plan No. 207120/18.2...
Dated. 20/08/18.....
Ex. Engineer (C-B)
Bor. No. 207120

Approved as per approval of R.C. (a) & 24/08/18

KOLKATA MUNICIPAL CORPORATION
BUILDING DEPTT.
PLANS APPROVED U/R 26 (2a) & (2b) of
C.M.C. BUILDING RULES 2009
B.P. No. 182 Br. No. 207120/18.2
Assistant Engineer Ex. Engr. (Civil)
Br. No. 207120 Br. No. 207120

