

ROOF PLAN

For 21. Shree... Pvt. Ltd. 22. Parvati Tulp Pvt. Ltd. 23. ... Pvt. Ltd. 24. Liberal Barter Pvt. Ltd. 25. Silara ... Pvt. Ltd. 26. Lily Advisory Services Pvt. Ltd. 27. Sneha ... Pvt. Ltd. 28. Koyal Housing Pvt. Ltd. 29. Rishi ... Pvt. Ltd. 30. Kashi Enclave Pvt. Ltd. 31. Aanchal ... Pvt. Ltd. 32. Anmol Barter Pvt. Ltd. 33. Akriti ... Pvt. Ltd. 34. Astha Barter Pvt. Ltd. 35. Anubhav Sales Pvt. Ltd. 36. Astha Barter Pvt. Ltd. 37. Compare Vanija Pvt. Ltd. 38. Gurukul Vyapar Pvt. Ltd. 39. Mantra Vyapar Pvt. Ltd. 40. Megamart Merchants Pvt. Ltd. By their Constituted Attorney

(Constituted Attorney)

For 41. Mumpse Merchants Pvt. Ltd. 42. ... Pvt. Ltd. 43. Prayash Vinimay Pvt. Ltd. 44. Prakash Vyapaar Pvt. Ltd. 45. Praman Distributors Pvt. Ltd. 46. Prayash Vyapaar Pvt. Ltd. 47. Principle Vinimay Pvt. Ltd. 48. Probal Merchants Pvt. Ltd. 49. Poojita Vinimay Pvt. Ltd. 50. Samay Barter Pvt. Ltd. 51. Sampark Vinimay Pvt. Ltd. 52. Sarvottam Goods Pvt. Ltd. 53. Sensitive Vyapaar Pvt. Ltd. 54. Shelter Tie-Up Pvt. Ltd. 55. Sparsh Vinimay Pvt. Ltd. 56. Upward Merchants Pvt. Ltd. 57. Vertical Vinimay Pvt. Ltd. 58. Innovative Vinimay Pvt. Ltd. 59. Hamshah Consultants Pvt. Ltd. 60. By their Constituted Attorney

(Constituted Attorney)

For 61. Snowfall Vinimay Pvt. Ltd. 62. Premium Agencies Pvt. Ltd. 63. Greenline Tie-Up Pvt. Ltd. 64. Imrove Suppliers Pvt. Ltd. 65. Alankar Vintrade Pvt. Ltd. 66. Fairplan Marketing Pvt. Ltd. 67. Silverline Suppliers Pvt. Ltd. 68. Karishma Tie-Up Pvt. Ltd. 69. Sunbright Tradetrinks Pvt. Ltd. 70. Karishma Tie-Up Pvt. Ltd. 71. Goldmine Distributors Pvt. Ltd. 72. P. S. Inns Pvt. Ltd. 73. Shajila Developers Pvt. Ltd. 74. Shajila Infrastructure Developers Pvt. Ltd. 75. Uday Infotech Pvt. Ltd. By their Constituted Attorney

(Constituted Attorney)

SCHEDULE OF DOOR & WINDOW :-			
NO.	SILL	LINTEL	SIZE
DW1	2450		9450X2450
DW2	2450		4920X2450
DW3	2450		5350X2450
DW4	2450		4995X2450
DW5	2450		3850X2450
DW6	2450		3150X2450
DW7	2450		3200X2450
DW8	2450		3000X2450
DW9	2450		2850X2450
D2	2150		1800X2150
D2A	2450		1800X2450
D3	2150		1200X2150
D4	2150		1100X2150
D5	2150		1000X2150
D5A	2150		1075X2150
D6	2150		900X2150
D6A	250	2300	900X2050
D7	2150		750X2150
SD1	2150		2400X2150
SD2	2150		2100X2150
SD3	2150		1800X2150
F.C.D	2150		1000X2150
SW	350	2150	1200X1800
SW1	350	2150	1000X1800
SW2	350	2150	850X1800
SW3	350	2150	1200X1400
SW4	350	2150	1125X1200
SW5	350	2150	1125X1800
W1	350	2150	2400X1800
W1a	350	2150	2250X1800
W2	350	2150	2100X1800
W3	350	2150	1800X1800
W4	1100	2150	1200X1050
W4A	350	2150	1200X1800
W4B	350	2150	1200X1800
W5	350	2150	1050X1800
W5A	1100	2150	1050X1050
W5B	350	2150	1050X1800
W6	350	2150	850X1800
W6A	950	2150	850X1200
W6B	950	2150	850X1200
W6C	350	2150	600X1800
W6D	1200	2150	850X950
W7	350	2150	700X1800
W7A	350	2150	725X1800
W8	1250	2150	600X900
W8A	350	2150	700X1800
W8B	1250	2150	575X900
F.C.	350	2450	(1700+2150)X2100
V			ABOVE LINTEL

# ARTIFICIAL LIGHTING & MACHANICAL VENTILATION  
 # OPEN CAR PARKING  
 For 1. Clarity Barter Pvt. Ltd. 2. Himadri Tulp Pvt. Ltd. 3. Kalindi Agency Pvt. Ltd. 4. Anurag Enclave Pvt. Ltd. 5. Anurag Hirise Pvt. Ltd. 6. Gurukul Consultant Pvt. Ltd. 7. Manohar Inap Pvt. Ltd. 8. Sidharth Advisory Services Pvt. Ltd. 9. Usink Commercial Pvt. Ltd. 10. Umabala Infrastructure Pvt. Ltd. 11. Khazana Tulp Pvt. Ltd. 12. Shree Vinayak Pvt. Ltd. 13. Umabala Hirise Pvt. Ltd. 14. Kyal Realostate Pvt. Ltd. 15. Kyal Residency Pvt. Ltd. 16. Kyal Realostate Pvt. Ltd. 17. Kyal Realtors Pvt. Ltd. 18. Kyal Complex Pvt. Ltd. 19. Kyal Realtors Pvt. Ltd. 20. Lakshya Distributors Pvt. Ltd. By their Constituted Attorney

CERTIFICATE OF STRUCTURAL ENGINEER.

THIS IS TO CERTIFY THAT THE STRUCTURAL DESIGN OF BOTH FOUNDATION AND SUPER STRUCTURE OF THE BUILDING HAS BEEN MADE BY ME CONSIDERING ALL POSSIBLE LOADS INCLUDING THE SEISMIC LOAD AS PER THE NATIONAL BUILDING CODE OF INDIA AND CERTIFIED THAT IT IS SAFE AND STABLE IN ALL RESPECTS. SOIL TEST REPORT IS PREPARED BY M/S BOSE ENGINEERS OF 74/1, SULTAN ALAM ROAD, KOLKATA-700033

SANJIV J. PAREKH  
 M.E. (STRUCT.), B.C.E., PCCQM  
 C.ENG., I. M.S.C.E., ASCE, FIE (F-018202-4)  
 E.S.E. No. 104 (I) K.M.C.  
 SIGNATURE OF STRUCTURAL ENGG.

SANJIB GUHA  
 BSC BICE FIE (F-115654-5)  
 CHARTERED ENGINEER  
 ENLISTED STRUCTURAL  
 REVIEWER 88/16 K.M.  
 SIGNATURE OF STRUCTURAL REVIEWER

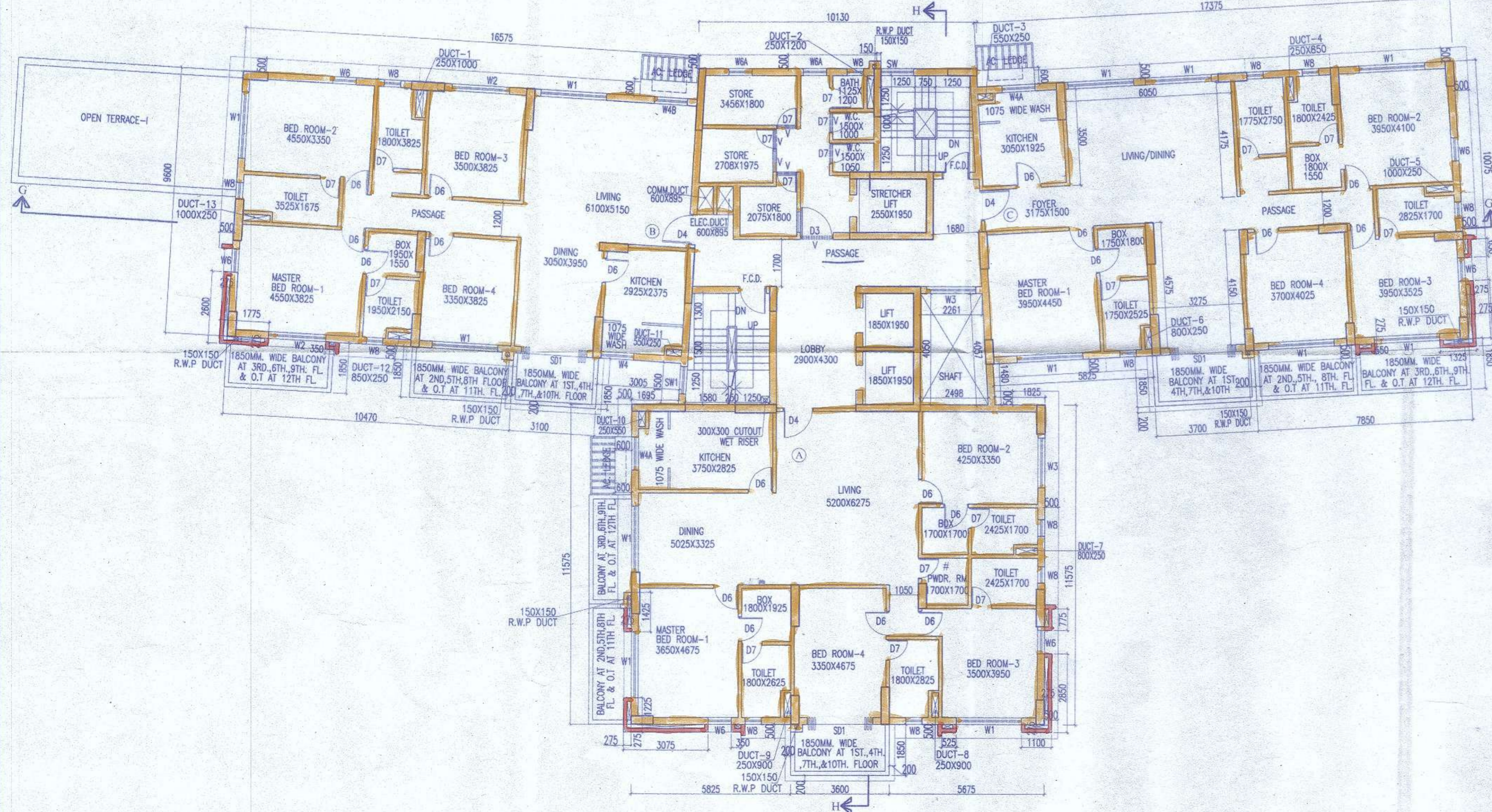
CERTIFICATE OF ARCHITECT.

I DO HEREBY CERTIFY WITH FULL RESPONSIBILITY THAT THE BUILDING PLAN HAS BEEN DRAWN UP AS PER K.M.C. BUILDING RULE-2009 AS AMENDED FROM TIME TO TIME. THAT THE WIDTH OF THE ABUTTING ROAD CONFORM WITH THE PLAN AND IT IS A BUILDABLE SITE NOT A TANK OR A FILLED UP TANK. THE SITE PLAN KEY PLAN AGREES WITH THE SITE. THE PLOT IS DEMARCATED BY BOUNDARY WALLS & MEASUREMENTS TALLY WITH THE REGD. DEED PLAN. THE EXISTING STRUCTURE AS SHOWN FULLY OCCUPIED BY OWNERS AS PER OWNERS UNDERTAKING.

JAY PRAKASH BHARAT KUMAR AGRAWAL  
 B. Arch., A.I.I.A.  
 Reg. No. CA / 86 / 10098  
 ARCHITECT SL. NO. - 32149  
 SIGNATURE OF ARCHITECT.

TITLE- 4TH, 7TH, 10TH FLOOR PLAN  
 ROOF PLAN  
 BLOCK - 4

PROJECT- PLAN SHOWING CHANGES U/R 26(2a) & (2b) OF KMC BUILDING RULE-2009 OF RESIDENTIAL COMPLEX WITH BLOCK-1 (G-XI), BLOCK-2 TO 4 (B-G-XII) AND BLOCK-5 (B-G-XI) AT PREMISES NO. 49A, MONMOHAN BANERJEE ROAD, KOLKATA-700 038. WARD NO. - 118, BOROUGH - XIII, P.S. - BEHALA, SANCTIONED VIDE B.P. NO.2017130182 DATED 16/12/2017, SUPERSIDING B.P. NO. 2015130048 DATED 18/05/2015



4TH, 7TH & 10TH FLOOR PLAN

N	ARCHITECTS		AGRAWAL & AGRAWAL	
			BARODA	KOLKATA
SCALE	DATE	DEALT	CHECKED	
1:100	05.07.18	PALLABI	SHILA	

Sheet No:- 26/35

**PARTY'S COPY**

0081(XM) 12-24(2) (20) 18-19 24/08/18

This Plan is To Be Treated As Part  
And Parcel And Contiguous To  
B. S. Plan No. 2017130182  
Dated 24/08/18  
Ex. Engineer (C-B)  
Br. No.:- X-4

Approved on per approval of R. G. (G) dt 24/08/18

KOLKATA MUNICIPAL CORPORATION  
BUILDING DEPTT.  
PLANS APPROVED U/R 26 (2a) & (2b) of  
C.M.C. BUILDING RULES 2009  
B.P. No. 182 Br. No. X-4 Dt. 24/08/18  
Assistant Engineer Ex. Engr. (Civil)  
Br. No.:- X-4 Br. No.:- X-4

