

- For 1. Clarify Batter Pvt. Ltd. 2. Himadri Tissue Pvt. Ltd.
- 3. Kalindi Agency Pvt. Ltd. 4. Anand Enclave Pvt. Ltd.
- 5. Anand Enclave Pvt. Ltd. 6. Gurukul Consultant Pvt. Ltd.
- 7. Gurukul Consultant Pvt. Ltd. 8. Gurukul Consultant Pvt. Ltd.
- 9. Gurukul Consultant Pvt. Ltd. 10. Gurukul Consultant Pvt. Ltd.
- 11. Gurukul Consultant Pvt. Ltd. 12. Gurukul Consultant Pvt. Ltd.
- 13. Gurukul Consultant Pvt. Ltd. 14. Gurukul Consultant Pvt. Ltd.
- 15. Gurukul Consultant Pvt. Ltd. 16. Gurukul Consultant Pvt. Ltd.
- 17. Gurukul Consultant Pvt. Ltd. 18. Gurukul Consultant Pvt. Ltd.
- 19. Gurukul Consultant Pvt. Ltd. 20. Gurukul Consultant Pvt. Ltd.
- By their Constituted Attorney

(Constituted Attorney)

For 21. Shreeji Enterprises Pvt. Ltd. 22. Shreeji Enterprises Pvt. Ltd.

23. Shreeji Enterprises Pvt. Ltd. 24. Shreeji Enterprises Pvt. Ltd.

25. Shreeji Enterprises Pvt. Ltd. 26. Shreeji Enterprises Pvt. Ltd.

27. Shreeji Enterprises Pvt. Ltd. 28. Shreeji Enterprises Pvt. Ltd.

29. Shreeji Enterprises Pvt. Ltd. 30. Shreeji Enterprises Pvt. Ltd.

31. Shreeji Enterprises Pvt. Ltd. 32. Shreeji Enterprises Pvt. Ltd.

33. Shreeji Enterprises Pvt. Ltd. 34. Shreeji Enterprises Pvt. Ltd.

35. Shreeji Enterprises Pvt. Ltd. 36. Shreeji Enterprises Pvt. Ltd.

37. Shreeji Enterprises Pvt. Ltd. 38. Shreeji Enterprises Pvt. Ltd.

39. Shreeji Enterprises Pvt. Ltd. 40. Shreeji Enterprises Pvt. Ltd.

By their Constituted Attorney

(Constituted Attorney)

For 41. Shreeji Enterprises Pvt. Ltd. 42. Shreeji Enterprises Pvt. Ltd.

43. Shreeji Enterprises Pvt. Ltd. 44. Shreeji Enterprises Pvt. Ltd.

45. Shreeji Enterprises Pvt. Ltd. 46. Shreeji Enterprises Pvt. Ltd.

47. Shreeji Enterprises Pvt. Ltd. 48. Shreeji Enterprises Pvt. Ltd.

49. Shreeji Enterprises Pvt. Ltd. 50. Shreeji Enterprises Pvt. Ltd.

51. Shreeji Enterprises Pvt. Ltd. 52. Shreeji Enterprises Pvt. Ltd.

53. Shreeji Enterprises Pvt. Ltd. 54. Shreeji Enterprises Pvt. Ltd.

55. Shreeji Enterprises Pvt. Ltd. 56. Shreeji Enterprises Pvt. Ltd.

57. Shreeji Enterprises Pvt. Ltd. 58. Shreeji Enterprises Pvt. Ltd.

59. Shreeji Enterprises Pvt. Ltd. 60. Shreeji Enterprises Pvt. Ltd.

By their Constituted Attorney

(Constituted Attorney)

For 61. Shreeji Enterprises Pvt. Ltd. 62. Shreeji Enterprises Pvt. Ltd.

63. Shreeji Enterprises Pvt. Ltd. 64. Shreeji Enterprises Pvt. Ltd.

65. Shreeji Enterprises Pvt. Ltd. 66. Shreeji Enterprises Pvt. Ltd.

67. Shreeji Enterprises Pvt. Ltd. 68. Shreeji Enterprises Pvt. Ltd.

69. Shreeji Enterprises Pvt. Ltd. 70. Shreeji Enterprises Pvt. Ltd.

71. Shreeji Enterprises Pvt. Ltd. 72. Shreeji Enterprises Pvt. Ltd.

73. Shreeji Enterprises Pvt. Ltd. 74. Shreeji Enterprises Pvt. Ltd.

75. Shreeji Enterprises Pvt. Ltd. 76. Shreeji Enterprises Pvt. Ltd.

By their Constituted Attorney

(Constituted Attorney)

For 77. Shreeji Enterprises Pvt. Ltd. 78. Shreeji Enterprises Pvt. Ltd.

79. Shreeji Enterprises Pvt. Ltd. 80. Shreeji Enterprises Pvt. Ltd.

81. Shreeji Enterprises Pvt. Ltd. 82. Shreeji Enterprises Pvt. Ltd.

83. Shreeji Enterprises Pvt. Ltd. 84. Shreeji Enterprises Pvt. Ltd.

85. Shreeji Enterprises Pvt. Ltd. 86. Shreeji Enterprises Pvt. Ltd.

87. Shreeji Enterprises Pvt. Ltd. 88. Shreeji Enterprises Pvt. Ltd.

89. Shreeji Enterprises Pvt. Ltd. 90. Shreeji Enterprises Pvt. Ltd.

91. Shreeji Enterprises Pvt. Ltd. 92. Shreeji Enterprises Pvt. Ltd.

93. Shreeji Enterprises Pvt. Ltd. 94. Shreeji Enterprises Pvt. Ltd.

95. Shreeji Enterprises Pvt. Ltd. 96. Shreeji Enterprises Pvt. Ltd.

97. Shreeji Enterprises Pvt. Ltd. 98. Shreeji Enterprises Pvt. Ltd.

99. Shreeji Enterprises Pvt. Ltd. 100. Shreeji Enterprises Pvt. Ltd.

By their Constituted Attorney

CERTIFICATE OF STRUCTURAL ENGINEER

THIS IS TO CERTIFY THAT THE STRUCTURAL DESIGN AND DRAWINGS OF BOTH FOUNDATION AND SUPER STRUCTURE OF THE BUILDING HAS BEEN MADE BY ME CONSIDERING ALL POSSIBLE LOADS INCLUDING THE SEISMIC LOAD AS PER THE NATIONAL BUILDING CODE OF INDIA AND CERTIFIED THAT IT IS SAFE AND STABLE IN ALL RESPECTS. SOIL TEST REPORT IS PREPARED BY A LICENSED ENGINEER OF 74/J1, SULTAN ALAM ROAD, KOLKATA-700035

*(Signature)*  
**SANJIV J. PAREKH**  
 M.E. (STRUCTURE), C.E. (PCCM),  
 C. ENG. (I), M.SCE. (ASCE), FIE (P-018282-4)  
 E.S.E. No. 104 (I) K.M.C.

CERTIFICATE OF ARCHITECT

I DO HEREBY CERTIFY WITH FULL RESPONSIBILITY THAT THE BUILDING PLAN HAS BEEN DRAWN UP AS PER K.M.C. BUILDING RULES AND AS AMENDED FROM TIME TO TIME WITH THE PLAN AND IT IS A BUILDABLE SITE NOT AT AN ORA FILLED UP TANK. THE SITE PLAN KEY PLAN AGREES WITH THE SITE. THE PLOT IS DEMARCATED BY BOUNDARY WALLS & MEASUREMENTS TALLY WITH THE REGD. DEED PLAN. THE EXISTING STRUCTURE AS SHOWN FULLY OCCUPIED BY OWNERS AS PER OWNERS UNDERTAKING

*(Signature)*  
**SANJIB GUHA**  
 M.E. (ARCHITECTURE), C.E. (PCCM),  
 M. ARCH. (ASCE), F.I.E. (P-018282-4)  
 E.S.E. No. 104 (I) K.M.C.

CERTIFICATE OF STRUCTURAL REVIEWER

THIS IS TO CERTIFY THAT THE STRUCTURAL DESIGN AND DRAWINGS OF BOTH FOUNDATION AND SUPER STRUCTURE OF THE BUILDING HAS BEEN MADE BY ME CONSIDERING ALL POSSIBLE LOADS INCLUDING THE SEISMIC LOAD AS PER THE NATIONAL BUILDING CODE OF INDIA AND CERTIFIED THAT IT IS SAFE AND STABLE IN ALL RESPECTS. SOIL TEST REPORT IS PREPARED BY A LICENSED ENGINEER OF 74/J1, SULTAN ALAM ROAD, KOLKATA-700035

*(Signature)*  
**SANJIB GUHA**  
 M.E. (ARCHITECTURE), C.E. (PCCM),  
 M. ARCH. (ASCE), F.I.E. (P-018282-4)  
 E.S.E. No. 104 (I) K.M.C.

CERTIFICATE OF ARCHITECT

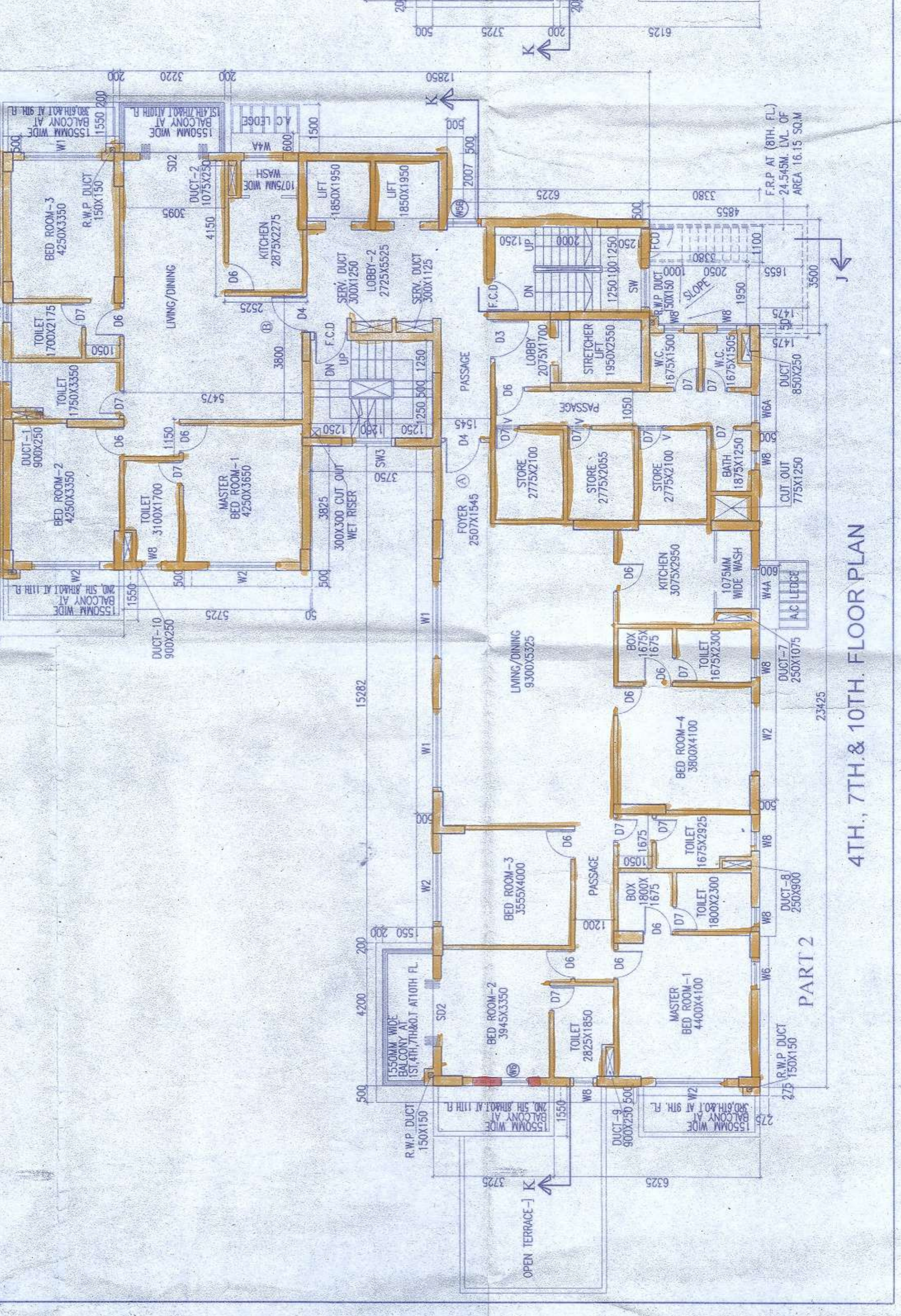
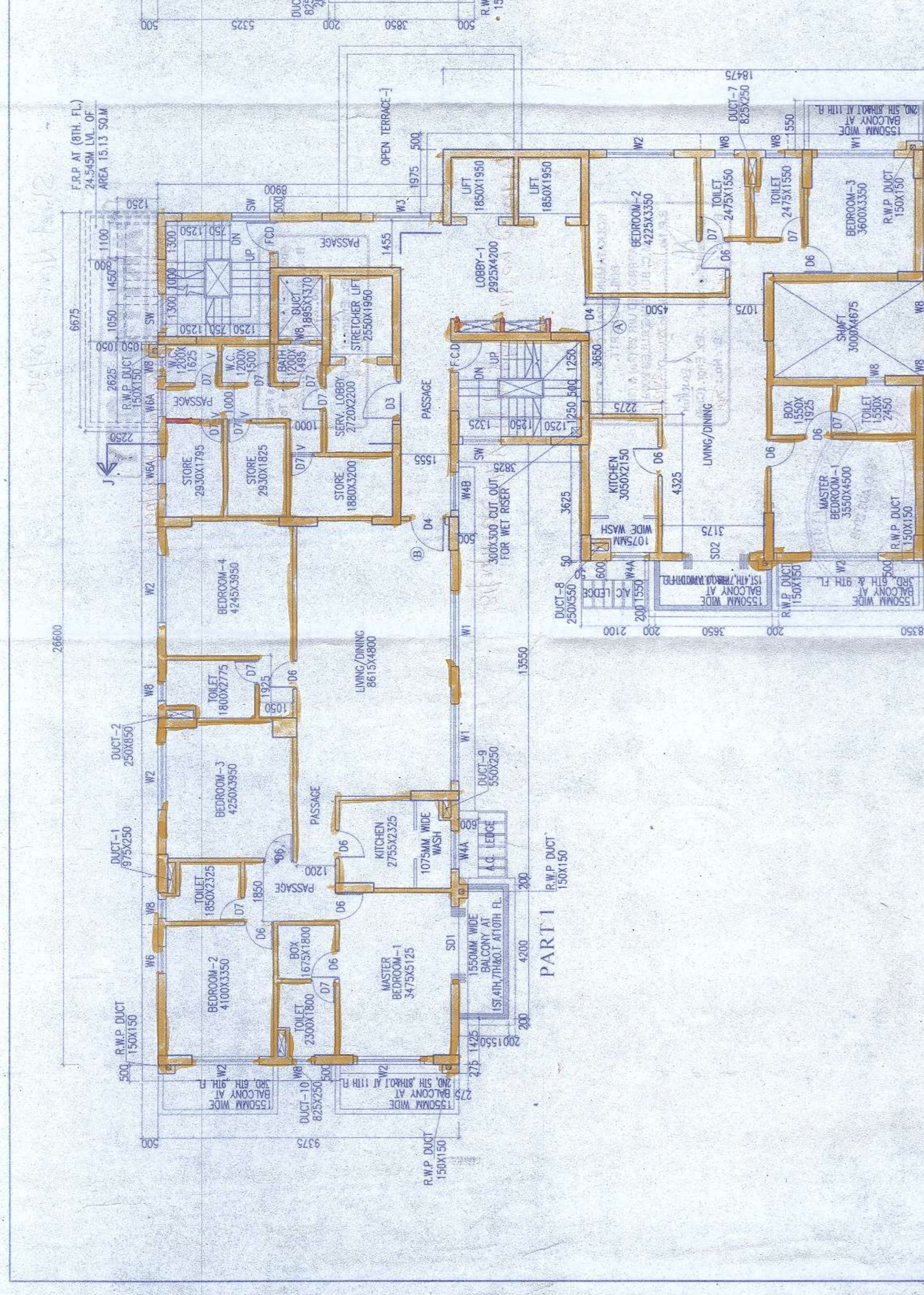
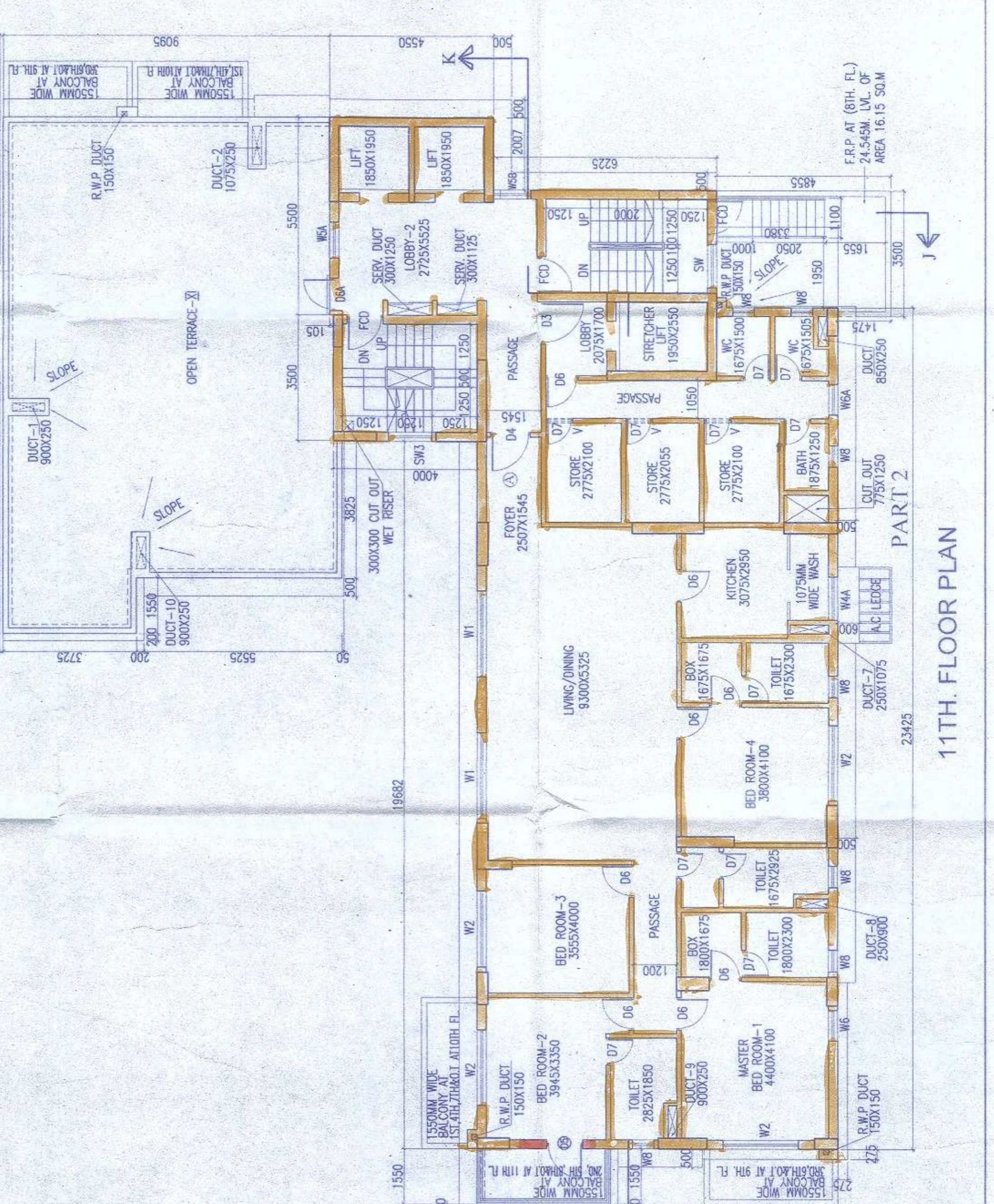
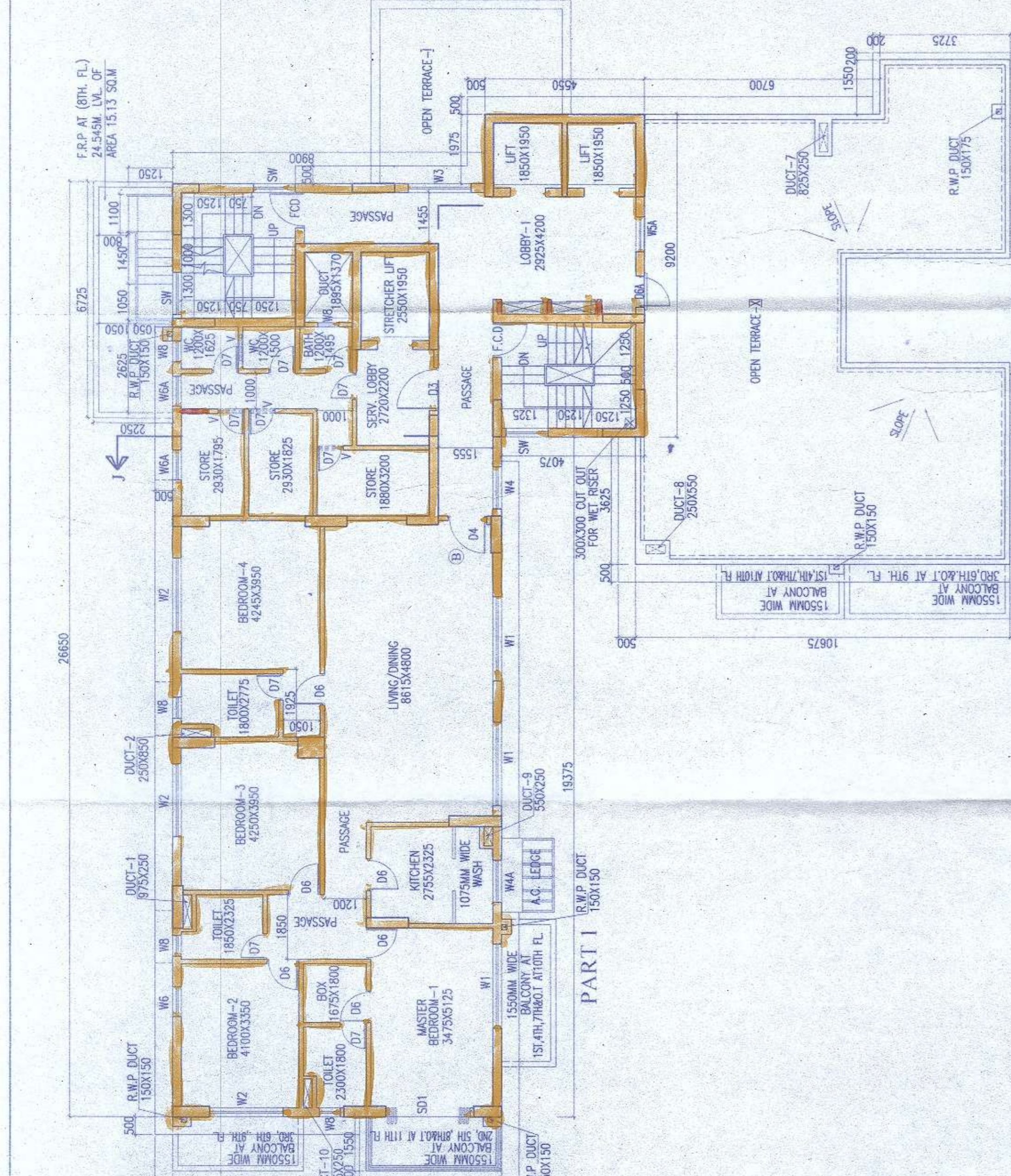
I DO HEREBY CERTIFY WITH FULL RESPONSIBILITY THAT THE BUILDING PLAN HAS BEEN DRAWN UP AS PER K.M.C. BUILDING RULES AND AS AMENDED FROM TIME TO TIME WITH THE PLAN AND IT IS A BUILDABLE SITE NOT AT AN ORA FILLED UP TANK. THE SITE PLAN KEY PLAN AGREES WITH THE SITE. THE PLOT IS DEMARCATED BY BOUNDARY WALLS & MEASUREMENTS TALLY WITH THE REGD. DEED PLAN. THE EXISTING STRUCTURE AS SHOWN FULLY OCCUPIED BY OWNERS AS PER OWNERS UNDERTAKING

*(Signature)*  
**JAY PRakash BHARATI**  
 M.E. (ARCHITECTURE), C.E. (PCCM),  
 M. ARCH. (ASCE), F.I.E. (P-018282-4)  
 E.S.E. No. 104 (I) K.M.C.

NO	SILL	LINTEL	SIZE
DW1	2450	2450	9450X2450
DW2	2450	2450	4920X2450
DW3	2450	2450	5350X2450
DW4	2450	2450	4995X2450
DW5	2450	2450	3850X2450
DW6	2450	2450	3150X2450
DW7	2450	2450	3200X2450
DW8	2450	2450	3000X2450
DW9	2450	2450	2850X2450
D2	2450	2450	1800X2150
D2A	2450	2450	1800X2150
D3	2150	2150	1200X2150
D4	2150	2150	1100X2150
D5	2150	2150	1000X2150
D5A	2150	2150	1075X2150
D6	2150	2150	900X2150
D6A	250	250	900X2050
D7	2150	2150	700X2150
SD1	2150	2150	2400X2150
SD2	2150	2150	2100X2150
SD3	2150	2150	1800X2150
F.C.D	2150	2150	1000X2150
SW1	350	2150	1200X1800
SW2	350	2150	1000X1800
SW3	350	2150	850X1800
SW4	350	2150	1200X1400
SW5	350	2150	1125X1800
SW6	350	2150	2400X1800
W1a	350	2150	2500X1800
W2	350	2150	2100X1800
W3	350	2150	1800X1800
W4	1100	2150	1200X1050
W4A	350	2150	1200X1800
W4B	350	2150	1200X1800
W5	350	2150	1050X1800
W5A	1100	2150	1050X1050
W5B	350	2150	1050X1800
W6	350	2150	850X1800
W6A	950	2150	850X1200
W6B	950	2150	850X1200
W6C	350	2150	600X1800
W6D	1200	2150	850X950
W7	350	2150	700X1800
W7A	350	2150	725X1800
W8	1250	2150	600X900
W8A	350	2150	700X1800
W8B	1250	2150	575X900
F.F.G	350	2150	1700X2150X2100

# ARTIFICIAL LIGHTING & MECHANICAL VENTILATION

\* OPEN CAR PARKING



Sheet No.:- 30/35

**PARTY'S COPY**

008/002/20/2018/18-19 BK-20/08/18

This Plan is To Be Treated As Part And Parcel And Contiguous To B. S. Plan No. 201/2018/18-19 Dated. 20/08/18  
*Aswale*  
Ex. Engineer (C-8)  
Br. No. 1-74

*Approved as per approval of K.K. on 24/08/18*

KOLKATA MUNICIPAL CORPORATION  
BUILDING DEPTT.  
PLANS APPROVED UNDER (2a) & (2b) OF  
CLM-15 BUILDING RULES 1956  
B.P. No. 12/2018/18-19 BK-20/08/18  
*Aswale*  
Assistant Engineer Ex. Engr. (Civil)  
Br. No. 1-74

BUILDING DEPARTMENT  
C.M.C. KOLKATA  
30 AUG 2018  
THE RO. MUNICIPAL