



53A, CANAL CIRCULAR ROAD 53B, CANAL CIRCULAR ROAD

32'0" WIDE ROAD

PRE. NO. 53, CANAL CIRCULAR ROAD
15'0" W.D. COMMON PASSAGE

SCALE 1/100

SCALE 1/100

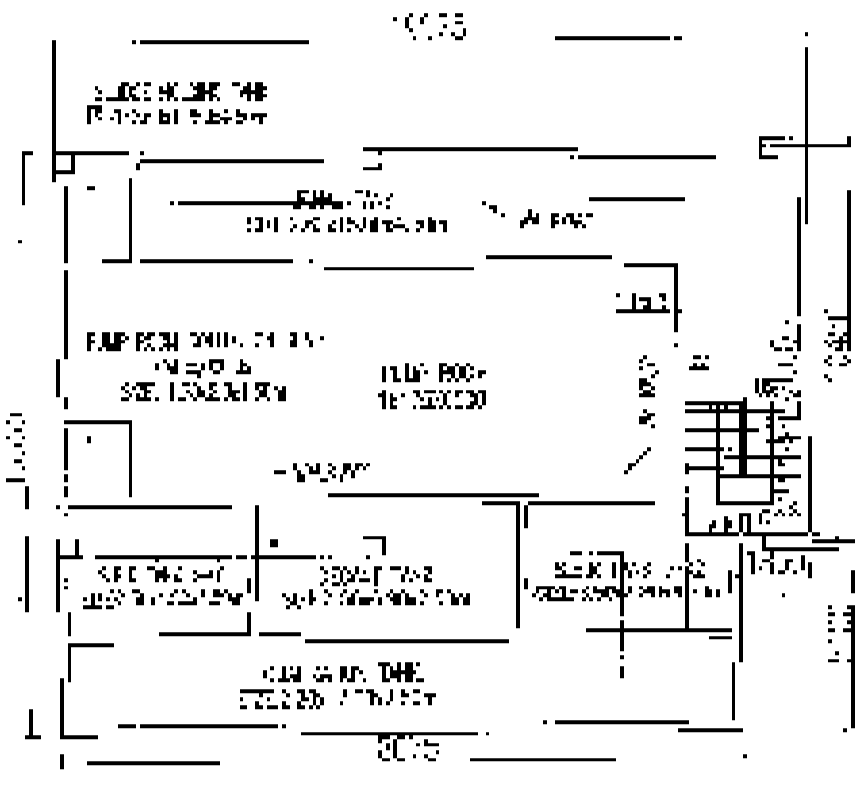
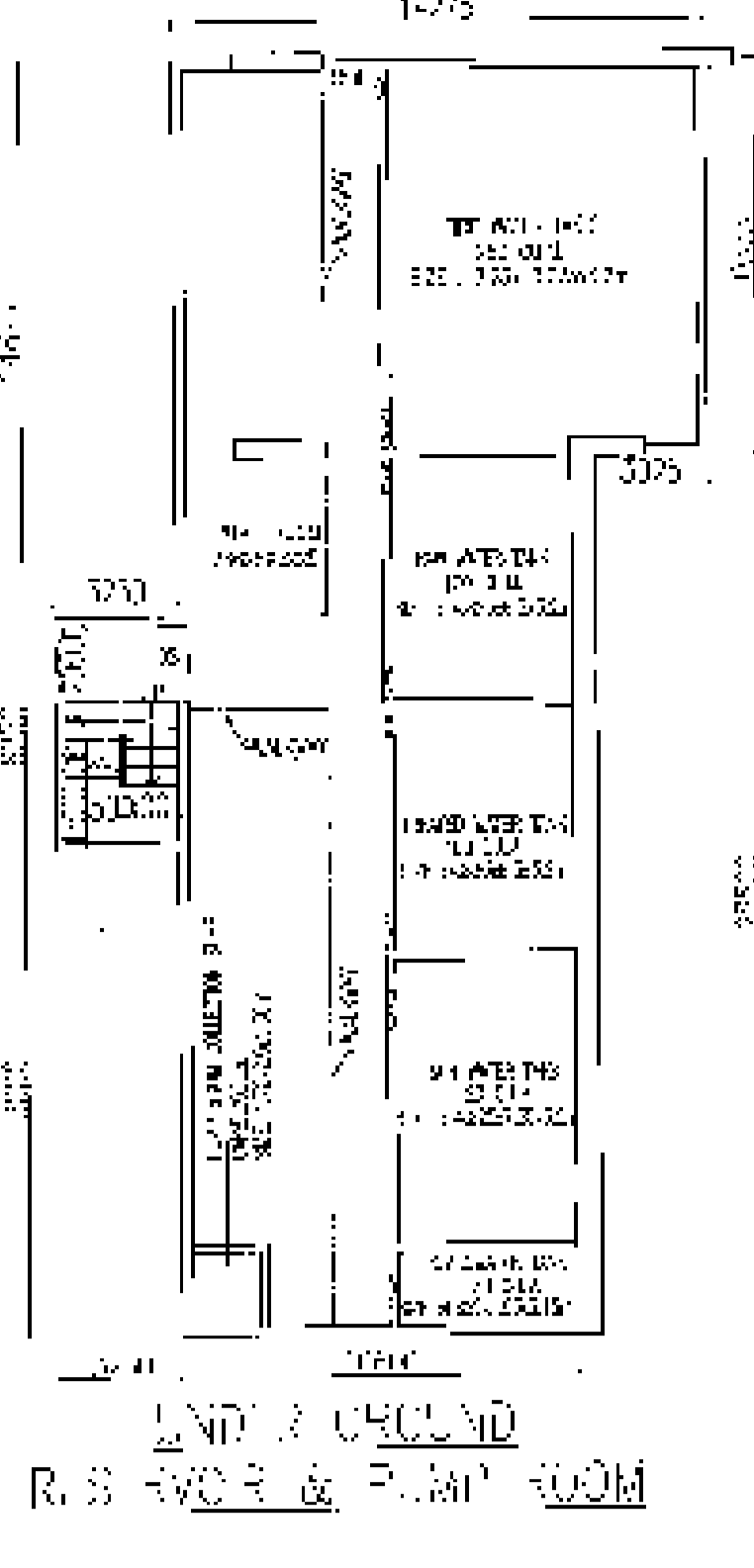
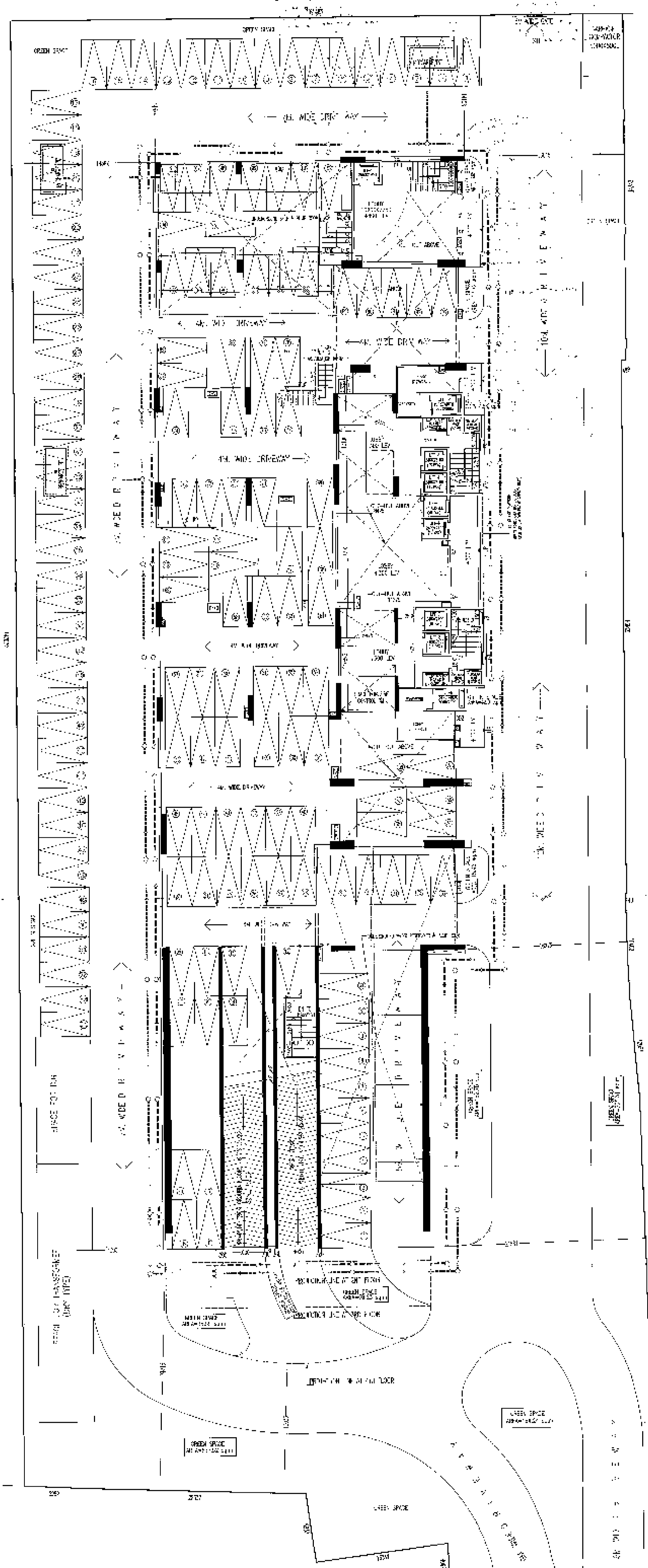
53A, CANAL CIRCULAR ROAD

53B, CANAL CIRCULAR ROAD

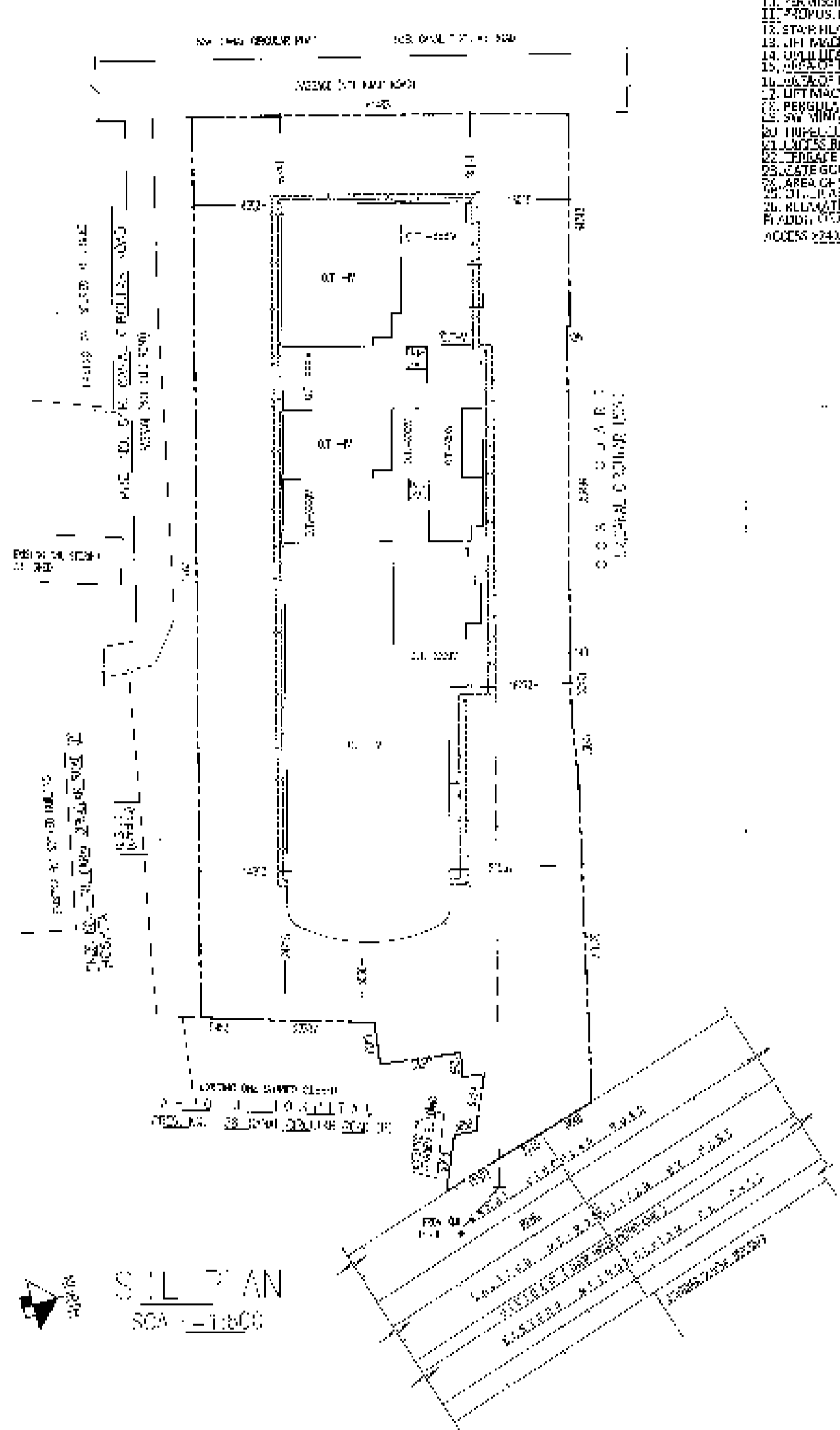
FRONT (40' CURB ROAD)

SCALE 1/100
SCALE 1/100
SCALE 1/100
SCALE 1/100

EXISTING STRUCTURE
SCALE=1/400



S.P. DETAIL W/FLY ROOM



SITE PLAN
SCALE=1/1000

Table with 10 columns: No., Area, Volume, etc. It lists various structural elements and their dimensions.

Table with 10 columns: No., Area, Volume, etc. It lists various structural elements and their dimensions.

Table with 10 columns: No., Area, Volume, etc. It lists various structural elements and their dimensions.

Table with 10 columns: No., Area, Volume, etc. It lists various structural elements and their dimensions.

Table with 10 columns: No., Area, Volume, etc. It lists various structural elements and their dimensions.

Table with 10 columns: No., Area, Volume, etc. It lists various structural elements and their dimensions.

Table with 10 columns: No., Area, Volume, etc. It lists various structural elements and their dimensions.

Table with 10 columns: No., Area, Volume, etc. It lists various structural elements and their dimensions.

Table with 10 columns: No., Area, Volume, etc. It lists various structural elements and their dimensions.

Table with 10 columns: No., Area, Volume, etc. It lists various structural elements and their dimensions.

Table with 10 columns: No., Area, Volume, etc. It lists various structural elements and their dimensions.

Table with 10 columns: No., Area, Volume, etc. It lists various structural elements and their dimensions.

Table with 10 columns: No., Area, Volume, etc. It lists various structural elements and their dimensions.

Table with 10 columns: No., Area, Volume, etc. It lists various structural elements and their dimensions.

Table with 10 columns: No., Area, Volume, etc. It lists various structural elements and their dimensions.

Table with 10 columns: No., Area, Volume, etc. It lists various structural elements and their dimensions.

Table with 10 columns: No., Area, Volume, etc. It lists various structural elements and their dimensions.

Table with 10 columns: No., Area, Volume, etc. It lists various structural elements and their dimensions.

Table with 10 columns: No., Area, Volume, etc. It lists various structural elements and their dimensions.

Table with 10 columns: No., Area, Volume, etc. It lists various structural elements and their dimensions.

REVISIONS BY OTHER APPROVALS

REVISIONS BY OTHER APPROVALS

REVISIONS BY OTHER APPROVALS

REVISIONS BY OTHER APPROVALS

REVISIONS BY OTHER APPROVALS

REVISIONS BY OTHER APPROVALS

REVISIONS BY OTHER APPROVALS

REVISIONS BY OTHER APPROVALS

REVISIONS BY OTHER APPROVALS

REVISIONS BY OTHER APPROVALS

REVISIONS BY OTHER APPROVALS

REVISIONS BY OTHER APPROVALS

REVISIONS BY OTHER APPROVALS

REVISIONS BY OTHER APPROVALS