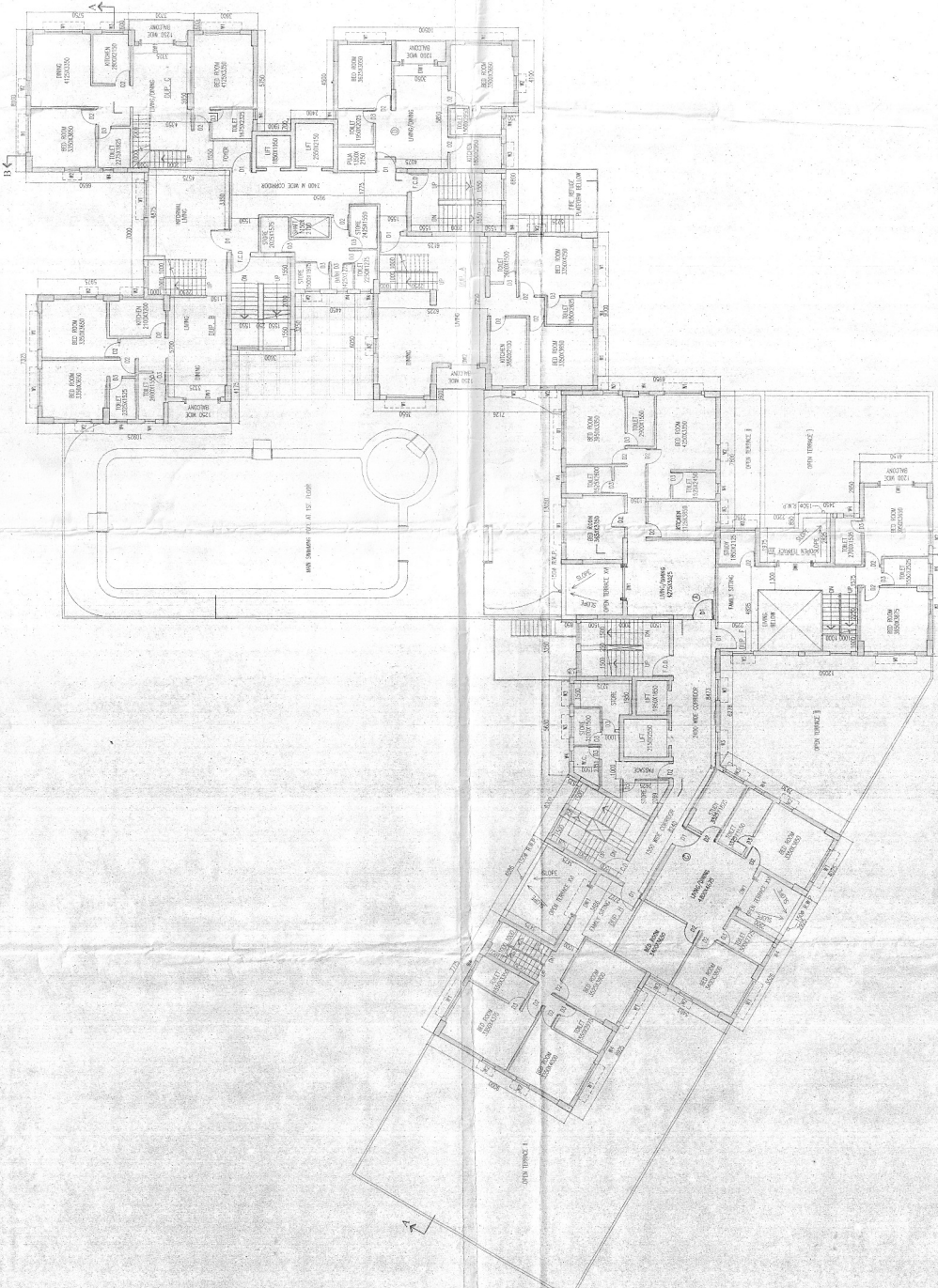
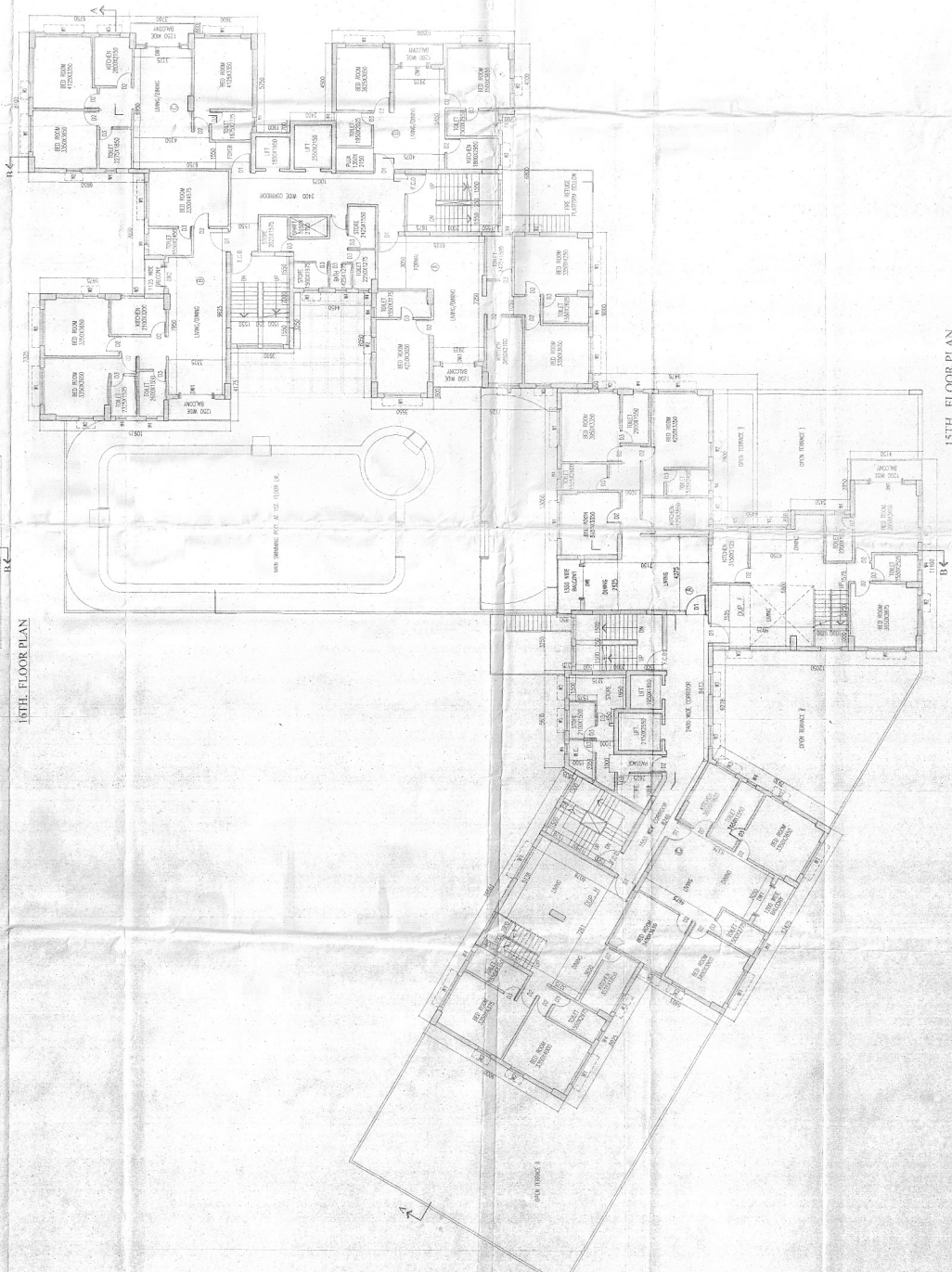


SCHEDULE OF DOORS & WINDOWS

NO.	SBL	LINTEL	SIZE
D	2330	2400X2350	
D1A	2340	1500X2350	
D1	2350	1200X2350	
F.C.D.	2350	1200X2350	
DE	2350	900X2350	
DS	2350	750X2350	
DSA	2350	1000X2350	
DW1	2350	2100X2350	
DW2	2350	1600X2350	
WT	350	2350	
WZ	350	2350	
WS	1100	2350	
WR	1250	2350	
WR	550	2350	
V			AS PER DETAIL



15TH FLOOR PLAN



16TH FLOOR PLAN

CERTIFICATE OF WORKS
 I HEREBY CERTIFY THAT THE ABOVE DESCRIBED BUILDING HAS BEEN CONSTRUCTED IN ACCORDANCE WITH THE APPROVED ARCHITECTURAL DRAWINGS AND SPECIFICATIONS AND THAT THE SAME ARE COMPLETE AND READY FOR OCCUPANCY.

For Local Municipal Engineer
 Smt. Anuradha Mahapatra
 Asst. Municipal Engineer
 Baroda Municipal Corporation
 Baroda, Gujarat

For Civil Engineer
 Mr. Jay Prakash Agrawal
 Asst. Municipal Engineer
 Baroda Municipal Corporation
 Baroda, Gujarat

For Structural Engineer
 Mr. Sanjay J. Parkhi
 Asst. Municipal Engineer
 Baroda Municipal Corporation
 Baroda, Gujarat

For Electrical Engineer
 Mr. Anil K. Patel
 Asst. Municipal Engineer
 Baroda Municipal Corporation
 Baroda, Gujarat

For Mechanical Engineer
 Mr. Anil K. Patel
 Asst. Municipal Engineer
 Baroda Municipal Corporation
 Baroda, Gujarat

SIGNATURE OF OWNER
 Mr. Jay Prakash Agrawal
 Asst. Municipal Engineer
 Baroda Municipal Corporation
 Baroda, Gujarat

SIGNATURE OF ARCHITECT
 Mr. Jay Prakash Agrawal
 Asst. Municipal Engineer
 Baroda Municipal Corporation
 Baroda, Gujarat

SIGNATURE OF STRUCTURAL ENGINEER
 Mr. Sanjay J. Parkhi
 Asst. Municipal Engineer
 Baroda Municipal Corporation
 Baroda, Gujarat

SIGNATURE OF ELECTRICAL ENGINEER
 Mr. Anil K. Patel
 Asst. Municipal Engineer
 Baroda Municipal Corporation
 Baroda, Gujarat

SIGNATURE OF MECHANICAL ENGINEER
 Mr. Anil K. Patel
 Asst. Municipal Engineer
 Baroda Municipal Corporation
 Baroda, Gujarat

SIGNATURE OF ARCHITECT
 Mr. Jay Prakash Agrawal
 Asst. Municipal Engineer
 Baroda Municipal Corporation
 Baroda, Gujarat

PROJECT
 REVISED (GATE) BRIDGE WITH BRIDGE DECK AND BRIDGE PILLARS
 PROJECT NO. 15/2017
 MUNICIPALITY, BARODA, GUJARAT

ARCHITECTS
 N. AGRAWAL & AGRAWAL
 BARODA
 GUJARAT

SCALE
 1:100
 1/4" = 1'-0"

DATE OF ISSUE
 21/08/2017

APPROVED
 21/08/2017
 Mr. Jay Prakash Agrawal
 Asst. Municipal Engineer
 Baroda Municipal Corporation
 Baroda, Gujarat