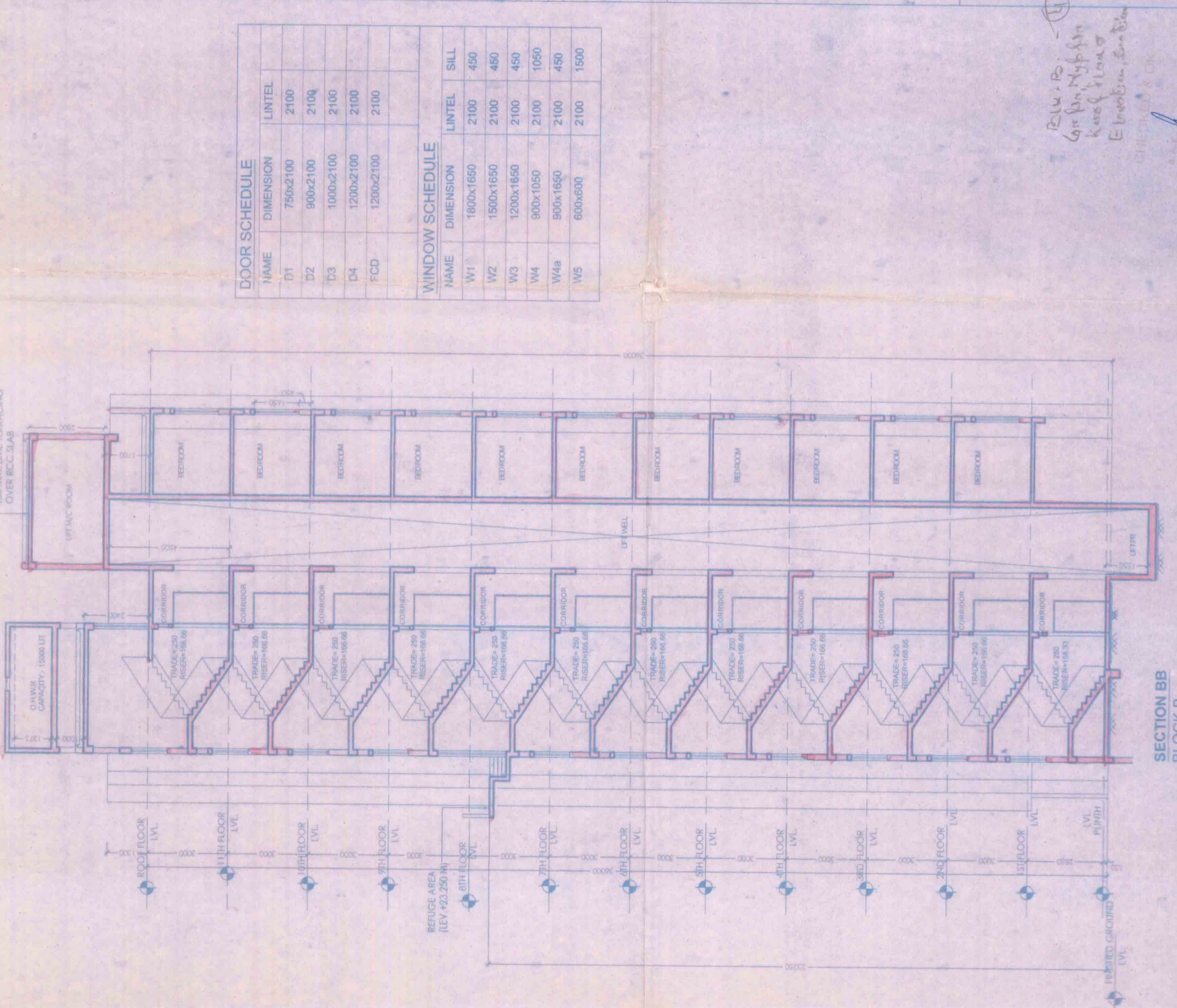


SECTION AA
BLOCK B



SECTION BB
BLOCK B

PROJECT: PROPOSED RESIDENTIAL COMPLEX AT K.S. DAG NO. 17A/1, 17B/1, 17C/1, 17D/1, 17E/1, 17F/1, 17G/1, 17H/1, 17I/1, 17J/1, 17K/1, 17L/1, 17M/1, 17N/1, 17O/1, 17P/1, 17Q/1, 17R/1, 17S/1, 17T/1, 17U/1, 17V/1, 17W/1, 17X/1, 17Y/1, 17Z/1, 17AA/1, 17AB/1, 17AC/1, 17AD/1, 17AE/1, 17AF/1, 17AG/1, 17AH/1, 17AI/1, 17AJ/1, 17AK/1, 17AL/1, 17AM/1, 17AN/1, 17AO/1, 17AP/1, 17AQ/1, 17AR/1, 17AS/1, 17AT/1, 17AU/1, 17AV/1, 17AW/1, 17AX/1, 17AY/1, 17AZ/1, 17BA/1, 17BB/1, 17BC/1, 17BD/1, 17BE/1, 17BF/1, 17BG/1, 17BH/1, 17BI/1, 17BJ/1, 17BK/1, 17BL/1, 17BM/1, 17BN/1, 17BO/1, 17BP/1, 17BQ/1, 17BR/1, 17BS/1, 17BT/1, 17BU/1, 17BV/1, 17BW/1, 17BX/1, 17BY/1, 17BZ/1, 17CA/1, 17CB/1, 17CC/1, 17CD/1, 17CE/1, 17CF/1, 17CG/1, 17CH/1, 17CI/1, 17CJ/1, 17CK/1, 17CL/1, 17CM/1, 17CN/1, 17CO/1, 17CP/1, 17CQ/1, 17CR/1, 17CS/1, 17CT/1, 17CU/1, 17CV/1, 17CW/1, 17CX/1, 17CY/1, 17CZ/1, 17DA/1, 17DB/1, 17DC/1, 17DD/1, 17DE/1, 17DF/1, 17DG/1, 17DH/1, 17DI/1, 17DJ/1, 17DK/1, 17DL/1, 17DM/1, 17DN/1, 17DO/1, 17DP/1, 17DQ/1, 17DR/1, 17DS/1, 17DT/1, 17DU/1, 17DV/1, 17DW/1, 17DX/1, 17DY/1, 17DZ/1, 17EA/1, 17EB/1, 17EC/1, 17ED/1, 17EE/1, 17EF/1, 17EG/1, 17EH/1, 17EI/1, 17EJ/1, 17EK/1, 17EL/1, 17EM/1, 17EN/1, 17EO/1, 17EP/1, 17EQ/1, 17ER/1, 17ES/1, 17ET/1, 17EU/1, 17EV/1, 17EW/1, 17EX/1, 17EY/1, 17EZ/1, 17FA/1, 17FB/1, 17FC/1, 17FD/1, 17FE/1, 17FF/1, 17FG/1, 17FH/1, 17FI/1, 17FJ/1, 17FK/1, 17FL/1, 17FM/1, 17FN/1, 17FO/1, 17FP/1, 17FQ/1, 17FR/1, 17FS/1, 17FT/1, 17FU/1, 17FV/1, 17FW/1, 17FX/1, 17FY/1, 17FZ/1, 17GA/1, 17GB/1, 17GC/1, 17GD/1, 17GE/1, 17GF/1, 17GG/1, 17GH/1, 17GI/1, 17GJ/1, 17GK/1, 17GL/1, 17GM/1, 17GN/1, 17GO/1, 17GP/1, 17GQ/1, 17GR/1, 17GS/1, 17GT/1, 17GU/1, 17GV/1, 17GW/1, 17GX/1, 17GY/1, 17GZ/1, 17HA/1, 17HB/1, 17HC/1, 17HD/1, 17HE/1, 17HF/1, 17HG/1, 17HH/1, 17HI/1, 17HJ/1, 17HK/1, 17HL/1, 17HM/1, 17HN/1, 17HO/1, 17HP/1, 17HQ/1, 17HR/1, 17HS/1, 17HT/1, 17HU/1, 17HV/1, 17HW/1, 17HX/1, 17HY/1, 17HZ/1, 17IA/1, 17IB/1, 17IC/1, 17ID/1, 17IE/1, 17IF/1, 17IG/1, 17IH/1, 17II/1, 17IJ/1, 17IK/1, 17IL/1, 17IM/1, 17IN/1, 17IO/1, 17IP/1, 17IQ/1, 17IR/1, 17IS/1, 17IT/1, 17IU/1, 17IV/1, 17IW/1, 17IX/1, 17IY/1, 17IZ/1, 17JA/1, 17JB/1, 17JC/1, 17JD/1, 17JE/1, 17JF/1, 17JG/1, 17JH/1, 17JI/1, 17JJ/1, 17JK/1, 17JL/1, 17JM/1, 17JN/1, 17JO/1, 17JP/1, 17JQ/1, 17JR/1, 17JS/1, 17JT/1, 17JU/1, 17JV/1, 17JW/1, 17JX/1, 17JY/1, 17JZ/1, 17KA/1, 17KB/1, 17KC/1, 17KD/1, 17KE/1, 17KF/1, 17KG/1, 17KH/1, 17KI/1, 17KJ/1, 17KK/1, 17KL/1, 17KM/1, 17KN/1, 17KO/1, 17KP/1, 17KQ/1, 17KR/1, 17KS/1, 17KT/1, 17KU/1, 17KV/1, 17KW/1, 17KX/1, 17KY/1, 17KZ/1, 17LA/1, 17LB/1, 17LC/1, 17LD/1, 17LE/1, 17LF/1, 17LG/1, 17LH/1, 17LI/1, 17LJ/1, 17LK/1, 17LL/1, 17LM/1, 17LN/1, 17LO/1, 17LP/1, 17LQ/1, 17LR/1, 17LS/1, 17LT/1, 17LU/1, 17LV/1, 17LW/1, 17LX/1, 17LY/1, 17LZ/1, 17MA/1, 17MB/1, 17MC/1, 17MD/1, 17ME/1, 17MF/1, 17MG/1, 17MH/1, 17MI/1, 17MJ/1, 17MK/1, 17ML/1, 17MM/1, 17MN/1, 17MO/1, 17MP/1, 17MQ/1, 17MR/1, 17MS/1, 17MT/1, 17MU/1, 17MV/1, 17MW/1, 17MX/1, 17MY/1, 17MZ/1, 17NA/1, 17NB/1, 17NC/1, 17ND/1, 17NE/1, 17NF/1, 17NG/1, 17NH/1, 17NI/1, 17NJ/1, 17NK/1, 17NL/1, 17NM/1, 17NN/1, 17NO/1, 17NP/1, 17NQ/1, 17NR/1, 17NS/1, 17NT/1, 17NU/1, 17NV/1, 17NW/1, 17NX/1, 17NY/1, 17NZ/1, 17OA/1, 17OB/1, 17OC/1, 17OD/1, 17OE/1, 17OF/1, 17OG/1, 17OH/1, 17OI/1, 17OJ/1, 17OK/1, 17OL/1, 17OM/1, 17ON/1, 17OO/1, 17OP/1, 17OQ/1, 17OR/1, 17OS/1, 17OT/1, 17OU/1, 17OV/1, 17OW/1, 17OX/1, 17OY/1, 17OZ/1, 17PA/1, 17PB/1, 17PC/1, 17PD/1, 17PE/1, 17PF/1, 17PG/1, 17PH/1, 17PI/1, 17PJ/1, 17PK/1, 17PL/1, 17PM/1, 17PN/1, 17PO/1, 17PP/1, 17PQ/1, 17PR/1, 17PS/1, 17PT/1, 17PU/1, 17PV/1, 17PW/1, 17PX/1, 17PY/1, 17PZ/1, 17QA/1, 17QB/1, 17QC/1, 17QD/1, 17QE/1, 17QF/1, 17QG/1, 17QH/1, 17QI/1, 17QJ/1, 17QK/1, 17QL/1, 17QM/1, 17QN/1, 17QO/1, 17QP/1, 17QQ/1, 17QR/1, 17QS/1, 17QT/1, 17QU/1, 17QV/1, 17QW/1, 17QX/1, 17QY/1, 17QZ/1, 17RA/1, 17RB/1, 17RC/1, 17RD/1, 17RE/1, 17RF/1, 17RG/1, 17RH/1, 17RI/1, 17RJ/1, 17RK/1, 17RL/1, 17RM/1, 17RN/1, 17RO/1, 17RP/1, 17RQ/1, 17RR/1, 17RS/1, 17RT/1, 17RU/1, 17RV/1, 17RW/1, 17RX/1, 17RY/1, 17RZ/1, 17SA/1, 17SB/1, 17SC/1, 17SD/1, 17SE/1, 17SF/1, 17SG/1, 17SH/1, 17SI/1, 17SJ/1, 17SK/1, 17SL/1, 17SM/1, 17SN/1, 17SO/1, 17SP/1, 17SQ/1, 17SR/1, 17SS/1, 17ST/1, 17SU/1, 17SV/1, 17SW/1, 17SX/1, 17SY/1, 17SZ/1, 17TA/1, 17TB/1, 17TC/1, 17TD/1, 17TE/1, 17TF/1, 17TG/1, 17TH/1, 17TI/1, 17TJ/1, 17TK/1, 17TL/1, 17TM/1, 17TN/1, 17TO/1, 17TP/1, 17TQ/1, 17TR/1, 17TS/1, 17TT/1, 17TU/1, 17TV/1, 17TW/1, 17TX/1, 17TY/1, 17TZ/1, 17UA/1, 17UB/1, 17UC/1, 17UD/1, 17UE/1, 17UF/1, 17UG/1, 17UH/1, 17UI/1, 17UJ/1, 17UK/1, 17UL/1, 17UM/1, 17UN/1, 17UO/1, 17UP/1, 17UQ/1, 17UR/1, 17US/1, 17UT/1, 17UU/1, 17UV/1, 17UW/1, 17UX/1, 17UY/1, 17UZ/1, 17VA/1, 17VB/1, 17VC/1, 17VD/1, 17VE/1, 17VF/1, 17VG/1, 17VH/1, 17VI/1, 17VJ/1, 17VK/1, 17VL/1, 17VM/1, 17VN/1, 17VO/1, 17VP/1, 17VQ/1, 17VR/1, 17VS/1, 17VT/1, 17VU/1, 17VV/1, 17VW/1, 17VX/1, 17VY/1, 17VZ/1, 17WA/1, 17WB/1, 17WC/1, 17WD/1, 17WE/1, 17WF/1, 17WG/1, 17WH/1, 17WI/1, 17WJ/1, 17WK/1, 17WL/1, 17WM/1, 17WN/1, 17WO/1, 17WP/1, 17WQ/1, 17WR/1, 17WS/1, 17WT/1, 17WU/1, 17WV/1, 17WW/1, 17WX/1, 17WY/1, 17WZ/1, 17XA/1, 17XB/1, 17XC/1, 17XD/1, 17XE/1, 17XF/1, 17XG/1, 17XH/1, 17XI/1, 17XJ/1, 17XK/1, 17XL/1, 17XM/1, 17XN/1, 17XO/1, 17XP/1, 17XQ/1, 17XR/1, 17XS/1, 17XT/1, 17XU/1, 17XV/1, 17XW/1, 17XX/1, 17XY/1, 17XZ/1, 17YA/1, 17YB/1, 17YC/1, 17YD/1, 17YE/1, 17YF/1, 17YG/1, 17YH/1, 17YI/1, 17YJ/1, 17YK/1, 17YL/1, 17YM/1, 17YN/1, 17YO/1, 17YP/1, 17YQ/1, 17YR/1, 17YS/1, 17YT/1, 17YU/1, 17YV/1, 17YW/1, 17YX/1, 17YY/1, 17YZ/1, 17ZA/1, 17ZB/1, 17ZC/1, 17ZD/1, 17ZE/1, 17ZF/1, 17ZG/1, 17ZH/1, 17ZI/1, 17ZJ/1, 17ZK/1, 17ZL/1, 17ZM/1, 17ZN/1, 17ZO/1, 17ZP/1, 17ZQ/1, 17ZR/1, 17ZS/1, 17ZT/1, 17ZU/1, 17ZV/1, 17ZW/1, 17ZX/1, 17ZY/1, 17ZZ/1.

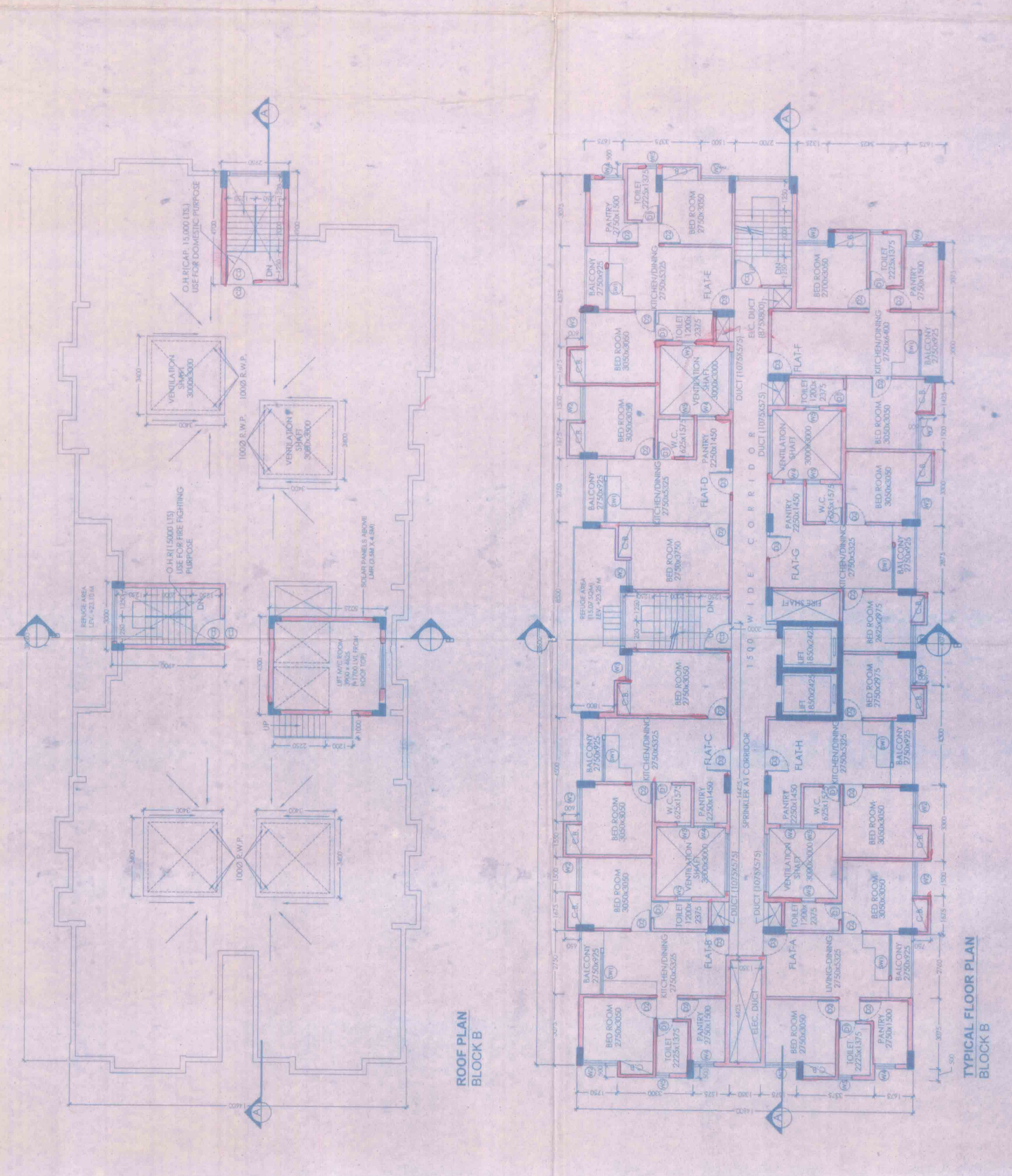
SECTION AA
BLOCK B

DECLARATION OF PROJECT: I, the undersigned, being the duly qualified Architect, do hereby certify that the above is a true and correct copy of the original drawings as submitted to me by the client for the purpose of obtaining a building plan from the competent authority. I further certify that the drawings are in accordance with the provisions of the Building Act, 1973 and the Building Rules, 1973, and that the same are in accordance with the approved building plan. I further certify that the drawings are in accordance with the provisions of the Building Act, 1973 and the Building Rules, 1973, and that the same are in accordance with the approved building plan. I further certify that the drawings are in accordance with the provisions of the Building Act, 1973 and the Building Rules, 1973, and that the same are in accordance with the approved building plan.

DECLARATION OF ARCHITECT: I, the undersigned, being the duly qualified Architect, do hereby certify that the above is a true and correct copy of the original drawings as submitted to me by the client for the purpose of obtaining a building plan from the competent authority. I further certify that the drawings are in accordance with the provisions of the Building Act, 1973 and the Building Rules, 1973, and that the same are in accordance with the approved building plan. I further certify that the drawings are in accordance with the provisions of the Building Act, 1973 and the Building Rules, 1973, and that the same are in accordance with the approved building plan. I further certify that the drawings are in accordance with the provisions of the Building Act, 1973 and the Building Rules, 1973, and that the same are in accordance with the approved building plan.

DECLARATION OF OWNER: I, the undersigned, being the duly qualified owner, do hereby certify that the above is a true and correct copy of the original drawings as submitted to me by the architect for the purpose of obtaining a building plan from the competent authority. I further certify that the drawings are in accordance with the provisions of the Building Act, 1973 and the Building Rules, 1973, and that the same are in accordance with the approved building plan. I further certify that the drawings are in accordance with the provisions of the Building Act, 1973 and the Building Rules, 1973, and that the same are in accordance with the approved building plan. I further certify that the drawings are in accordance with the provisions of the Building Act, 1973 and the Building Rules, 1973, and that the same are in accordance with the approved building plan.

DOOR SCHEDULE		WINDOW SCHEDULE	
NAME	DIMENSION	NAME	DIMENSION
D1	750x2100	W1	1800x1650
D2	900x2100	W2	1500x1650
D3	1000x2100	W3	1200x1650
D4	1200x2100	W4	900x1650
D5	1300x2100	W5	600x1650



TYPICAL FLOOR PLAN
BLOCK B

APPROVED
17/05/2018

17/05/2018

17/05/2018

These are occupancy requirements
for all buildings. The
requirements are contained in the
code.

Stacking of building materials on /
beside the public ways is illegal, and
the Municipality may take action to
remove such materials. The
Municipality may also take action to
remove such materials if they
pose a safety hazard.

APPROVED PLAN IS REVIEWED FOR

VALID UP TO 12/31/2020

DATE 07/09/2020

1481818

APPROVED

APPROVED

These are occupancy requirements
for all buildings. The
requirements are contained in the
code.

Stacking of building materials on /
beside the public ways is illegal, and
the Municipality may take action to
remove such materials. The
Municipality may also take action to
remove such materials if they
pose a safety hazard.