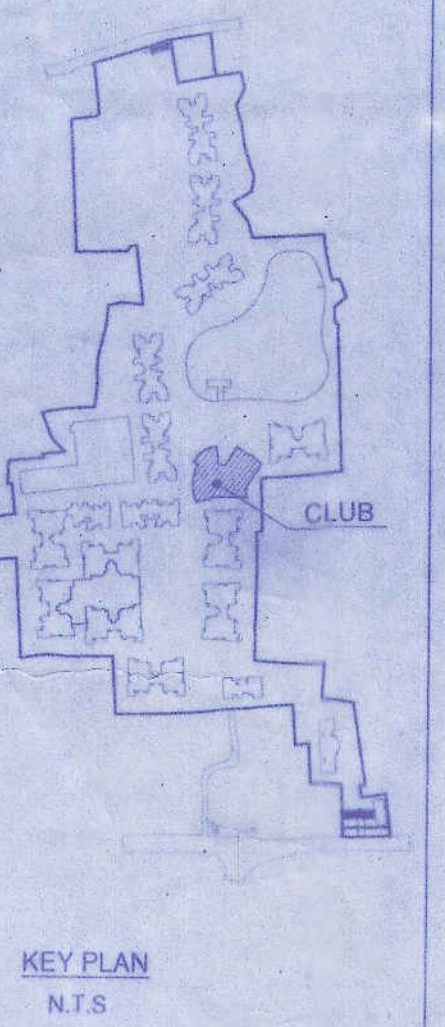


Name of the Land Owning Companies

1. Aadharseela Dealers Private Limited.
2. Aadharseela Tie Up Private Limited.
3. Anjanidham Marketing Private Limited.
4. Anjanidham Mercantile Private Limited.
5. Aravali Complex Private Limited.
6. Asthujha Complex Private Limited.
7. Asthujha Housing Private Limited.
8. Average Enclave Private Limited.
9. Average Heights Private Limited.
10. Average Properties Private Limited.
11. Average Residency Private Limited.
12. Baglamukhi Vyapaar Private Limited.
13. Banglurani Shoppers Private Limited.
14. Blockdeal Hirse Private Limited.
15. Blockdeal Infracore Private Limited.
16. Blockdeal Nirman Private Limited.
17. Blockdeal Residency Private Limited.
18. Booster Residency Private Limited.
19. Circular Promoters Private Limited.
20. Coolhat Builders Private Limited.
21. Coolhat Builders Private Limited.
22. Coolhat Builders Private Limited.
23. Coolhat Enclave Private Limited.
24. Coolhat Hirse Private Limited.
25. Coolhat Housing Private Limited.
26. Coolhat Infracore Private Limited.
27. Coolhat Infracore Private Limited.
28. Coolhat Nirman Private Limited.
29. Coolhat Projects Private Limited.
30. Coolhat Promoters Private Limited.
31. Coolhat Properties Private Limited.
32. Coolhat Realty Private Limited.
33. Coolhat Residency Private Limited.
34. Crossway Complex Private Limited.
35. Crossway Enclave Private Limited.
36. Crossway Infracore Private Limited.
37. Crossway Realstate Private Limited.
38. Dayanidhi Vinimay Private Limited.
39. Depujan Complex Private Limited.
40. Depujan Enclave Private Limited.
41. Depujan Hirse Private Limited.
42. Depujan Infracore Private Limited.
43. Depujan Residency Private Limited.
44. Dhanashah Commercial Private Limited.
45. Dhanashah Tradeflink Private Limited.
46. Dhanashah Tradeflink Private Limited.
47. Dhanashah Tradeflink Private Limited.
48. Dhanashah Tradeflink Private Limited.
49. Dhanashah Tradeflink Private Limited.
50. Dhanashah Tradeflink Private Limited.
51. Dhanashah Tradeflink Private Limited.
52. Dhanashah Tradeflink Private Limited.
53. Dhanashah Tradeflink Private Limited.
54. Dhanashah Tradeflink Private Limited.
55. Dhanashah Tradeflink Private Limited.
56. Dhanashah Tradeflink Private Limited.
57. Dhanashah Tradeflink Private Limited.
58. Dhanashah Tradeflink Private Limited.
59. Dhanashah Tradeflink Private Limited.
60. Dhanashah Tradeflink Private Limited.
61. Dhanashah Tradeflink Private Limited.
62. Dhanashah Tradeflink Private Limited.
63. Dhanashah Tradeflink Private Limited.
64. Dhanashah Tradeflink Private Limited.
65. Dhanashah Tradeflink Private Limited.
66. Dhanashah Tradeflink Private Limited.
67. Dhanashah Tradeflink Private Limited.
68. Dhanashah Tradeflink Private Limited.
69. Dhanashah Tradeflink Private Limited.
70. Dhanashah Tradeflink Private Limited.
71. Dhanashah Tradeflink Private Limited.
72. Dhanashah Tradeflink Private Limited.
73. Dhanashah Tradeflink Private Limited.
74. Dhanashah Tradeflink Private Limited.
75. Dhanashah Tradeflink Private Limited.
76. Dhanashah Tradeflink Private Limited.
77. Dhanashah Tradeflink Private Limited.
78. Dhanashah Tradeflink Private Limited.
79. Dhanashah Tradeflink Private Limited.
80. Dhanashah Tradeflink Private Limited.
81. Dhanashah Tradeflink Private Limited.
82. Dhanashah Tradeflink Private Limited.
83. Dhanashah Tradeflink Private Limited.
84. Dhanashah Tradeflink Private Limited.
85. Dhanashah Tradeflink Private Limited.
86. Dhanashah Tradeflink Private Limited.
87. Dhanashah Tradeflink Private Limited.
88. Dhanashah Tradeflink Private Limited.
89. Dhanashah Tradeflink Private Limited.
90. Dhanashah Tradeflink Private Limited.
91. Megapix Residency Private Limited.
92. Moonlight Vyapaar Private Limited.
93. Moonlight Vyapaar Private Limited.
94. Moonlight Vyapaar Private Limited.
95. Mridul Complex Private Limited.
96. Mridul Enclave Private Limited.
97. Mridul Heights Private Limited.
98. Palanhar Vyapaar Private Limited.
99. Panchmahal Vinimay Private Limited.
100. Panchmahal Complex Private Limited.
101. Panchmahal Complex Private Limited.
102. Panchmahal Complex Private Limited.
103. Panchmahal Complex Private Limited.
104. Panchmahal Complex Private Limited.
105. Panchmahal Complex Private Limited.
106. Panchmahal Complex Private Limited.
107. Panchmahal Complex Private Limited.
108. Panchmahal Complex Private Limited.
109. Panchmahal Complex Private Limited.
110. Panchmahal Complex Private Limited.
111. Panchmahal Complex Private Limited.
112. Panchmahal Complex Private Limited.
113. Panchmahal Complex Private Limited.
114. Panchmahal Complex Private Limited.
115. Panchmahal Complex Private Limited.
116. Panchmahal Complex Private Limited.
117. Panchmahal Complex Private Limited.
118. Panchmahal Complex Private Limited.
119. Panchmahal Complex Private Limited.
120. Panchmahal Complex Private Limited.
121. Panchmahal Complex Private Limited.
122. Panchmahal Complex Private Limited.
123. Panchmahal Complex Private Limited.
124. Panchmahal Complex Private Limited.
125. Panchmahal Complex Private Limited.
126. Panchmahal Complex Private Limited.
127. Panchmahal Complex Private Limited.
128. Panchmahal Complex Private Limited.
129. Panchmahal Complex Private Limited.
130. Panchmahal Complex Private Limited.
131. Panchmahal Complex Private Limited.
132. Panchmahal Complex Private Limited.
133. Panchmahal Complex Private Limited.
134. Panchmahal Complex Private Limited.
135. Panchmahal Complex Private Limited.
136. Panchmahal Complex Private Limited.
137. Panchmahal Complex Private Limited.
138. Panchmahal Complex Private Limited.
139. Panchmahal Complex Private Limited.
140. Panchmahal Complex Private Limited.
141. Panchmahal Complex Private Limited.
142. Panchmahal Complex Private Limited.
143. Panchmahal Complex Private Limited.
144. Panchmahal Complex Private Limited.
145. Panchmahal Complex Private Limited.
146. Panchmahal Complex Private Limited.
147. Panchmahal Complex Private Limited.
148. Panchmahal Complex Private Limited.
149. Panchmahal Complex Private Limited.
150. Panchmahal Complex Private Limited.
151. Panchmahal Complex Private Limited.
152. Panchmahal Complex Private Limited.
153. Panchmahal Complex Private Limited.
154. Panchmahal Complex Private Limited.
155. Panchmahal Complex Private Limited.
156. Panchmahal Complex Private Limited.
157. Panchmahal Complex Private Limited.
158. Panchmahal Complex Private Limited.
159. Panchmahal Complex Private Limited.
160. Panchmahal Complex Private Limited.
161. Panchmahal Complex Private Limited.
162. Panchmahal Complex Private Limited.
163. Panchmahal Complex Private Limited.
164. Panchmahal Complex Private Limited.
165. Panchmahal Complex Private Limited.
166. Panchmahal Complex Private Limited.
167. Panchmahal Complex Private Limited.
168. Panchmahal Complex Private Limited.
169. Panchmahal Complex Private Limited.
170. Panchmahal Complex Private Limited.
171. Panchmahal Complex Private Limited.
172. Panchmahal Complex Private Limited.
173. Panchmahal Complex Private Limited.
174. Panchmahal Complex Private Limited.
175. Panchmahal Complex Private Limited.
176. Panchmahal Complex Private Limited.
177. Panchmahal Complex Private Limited.
178. Panchmahal Complex Private Limited.

SCHEDULE OF DOORS & WINDOWS			
NO.	SILL.	LINTEL.	SIZE
D		2150	1800X2150
D1		2150	1100X2150
D2		2150	1000X2150
D3		2150	900X2150
D4		2150	750X2150
D5		2150	1000X2150
FCD		2150	1150X2150
SD1		2150	2100X2150
SD2		2150	1800X2150
SD3		2150	1500X2150
SD4		2150	1200X2150
W1	350	2150	1800X1800
W1A	350	2150	1500X1800
W2	350	2150	1325X1800
W2A	350	2150	1150X1800
W2B	350	2150	1000X1800
W3	350	2150	850X1800
W3A	1250	2150	900X900
W4	950	2150	900X1200
W5	1250	2150	600X900
W6	950	2150	1200X1200
W6A	950	2150	1500X1200



**CERTIFICATE OF STRUCTURAL STABILITY**

WE HEREBY CERTIFY THAT THE FOUNDATION AND SUPERSTRUCTURE OF THE BUILDING PROPOSED FOR CONSTRUCTION ON MOUZA- PATULIA, DAG NOS. 696 (P), 697, 698, 699, 700, 737 (P), 743, 744 (P), 749, 750, 754, 755, 756, 757, 758, 759, 760, 761, 762, 766 (P), 768, 769, 770, 771, 772, 773, 774, 776, 777, 781, 784 (P), 845 (P), 846, 847 (P), 849, 850, 851, 853, 854, 855, 856, 857, 858, 867/1687, 770/1251, 770/1252, 771/1253, 777/1254 & 856/1260, CORRESPONDING L.R. DAG NOS. 1595 (P), 1596, 1597, 1598, 1598, 1599, 1661 (P), 1702, 1635 (P), 1704, 1703, 1705, 1706, 1707, 1708, 1715, 1709, 1588, 1589, 1591, 1594, 1585 (P), 1587, 1588, 1712, 1710, 1713, 1717, 1716, 1825, 1824, 1835 (P), 1734 (P), 1733, 1732 (P), 1718, 1719, 1724, 1722, 1723, 1557, 1735, 1555, 1554, 1583, 1720, 1711, 1714, 1726 & 1556 RESPECTIVELY, J.L. NO. 4, UNDER PATULIA GRAM PANCHAYET, P.S.- KHARDAH, DISTRICT- NORTH-24-PARGANAS, HAVE BEEN SO DESIGNED BY US WILL MAKE SUCH FOUNDATION AND SUPERSTRUCTURE SAFE IN ALL RESPECTS INCLUDING THE CONSIDERATION OF BEARING CAPACITY & SETTLEMENT OF SOIL ETC.

**SIGNATURE OF ARCHITECT**

JAY PRAKASH BHARAT KUMAR AGRAWAL  
B. Arch., A.I.I.A.  
Reg. No. CA / 88 / 10098  
ARCHITECT SL. NO. - 32(A)

**SIGNATURE OF ARCHITECT**

SANJAY KUMAR BUBEY  
B. Arch., A.I.I.A.  
Reg. No. CA / 88 / 10098  
ARCHITECT SL. NO. - 32(A)

**SIGNATURE OF ARCHITECT**

JAY PRAKASH BHARAT KUMAR AGRAWAL  
B. Arch., A.I.I.A.  
Reg. No. CA / 88 / 10098  
ARCHITECT SL. NO. - 32(A)

**SIGNATURE OF ARCHITECT**

SANJAY KUMAR BUBEY  
B. Arch., A.I.I.A.  
Reg. No. CA / 88 / 10098  
ARCHITECT SL. NO. - 32(A)

**SIGN. OF STRUCTURAL ENGG.**

**SIGN. OF GEO-TECH. ENGG.**

THE PLAN HAVE BEEN PLANNED & DESIGNED IN COMPLIANCE OF THE THE WEST BENGAL MUNICIPAL BUILDING RULES 2007 FOLLOWED BY KHARDAH MUNICIPALITY. THE NEAREST MUNICIPALITY. ALL NORMS REGARDING BUILDING SAFETY INCLUDING STRUCTURAL STABILITY & FIRE SAFETY SHALL BE AS PER NBC.

**SIGNATURE OF ARCHITECT**

JAY PRAKASH BHARAT KUMAR AGRAWAL  
B. Arch., A.I.I.A.  
Reg. No. CA / 88 / 10098  
ARCHITECT SL. NO. - 32(A)

**SIGNATURE OF ARCHITECT**

SANJAY KUMAR BUBEY  
B. Arch., A.I.I.A.  
Reg. No. CA / 88 / 10098  
ARCHITECT SL. NO. - 32(A)

**CERTIFICATE OF LAND**

I HAVE PERSONALLY VERIFIED THE SITE & FOUND IT IS BUILDABLE & TO MY KNOWLEDGE IT IS NOT A TANK OR FILLED UP TANK.

**SIGNATURE OF ARCHITECT**

JAY PRAKASH BHARAT KUMAR AGRAWAL  
B. Arch., A.I.I.A.  
Reg. No. CA / 88 / 10098  
ARCHITECT SL. NO. - 32(A)

**SIGNATURE OF ARCHITECT**

SANJAY KUMAR BUBEY  
B. Arch., A.I.I.A.  
Reg. No. CA / 88 / 10098  
ARCHITECT SL. NO. - 32(A)

**TITLE** - 2ND FLOOR PLAN, ROOF PLAN. (BLOCK 2C)

**PROJECT** - PROPOSED ADDITION OF 4 NOS. RESIDENTIAL BLOCKS (NOS. (G-III) STORED NAMEDLY - 5 & 6 AND 2 NOS. (G-XII) STORED NAMEDLY - 3B & 3C) BLOCKS (6 NOS. (G-III) STORED NAMEDLY - 1E, 1F, 1G, 4A, 4B, 4C AND 1 NO. (G-IV) STORED NAMEDLY - 3A) AND 8 NOS. SANCTIONED BLOCKS (7 NOS. (G-IV) STORED NAMEDLY - 1A, 1B, 1C, 1D, 2A, 2B, 2D AND 1 NO. (G-III) STORED NAMEDLY - 2C) UNDER CONSTRUCTION WITH REFERENCE TO APPROVAL FOR CONSTRUCTION VIDE PERMISSION NO. - 322/BK-PLPS DATED 11/04/16 AND OUT OF 8 NOS. SANCTIONED BLOCKS - 4 NOS. BLOCKS (NAMEDLY - 1B, 1C, 1D & 2A) HAS BEEN OBTAINED OCCUPANCY CERTIFICATE ON 05/04/2019 FROM BKPH PANCHAYAT SAMITI, NORTH 24 PARGANAS IN RESIDENTIAL COMPLEX AT MOUZA - PATULIA, RS. DAG NOS.-696 (P), 697, 698, 699, 700, 737 (P), 743, 744 (P), 749, 750, 754, 755, 756, 757, 758, 759, 760, 761, 762, 766 (P), 768, 769, 770, 771, 772, 773, 774, 776, 777, 844 (P), 845 (P), 846, 847 (P), 849, 850, 851, 853, 854, 855, 856, 857, 858, 767/1687, 770/1251, 770/1252, 771/1253, 777/1254 & 856/1260, CORRESPONDING L.R. DAG NOS. - 1595 (P), 1596, 1597, 1598, 1598, 1599, 1661 (P), 1702, 1635 (P), 1704, 1703, 1705, 1706, 1707, 1708, 1715, 1709, 1588, 1589, 1591, 1594, 1585 (P), 1587, 1586, 1712, 1710, 1722, 1723, 1557, 1735, 1555, 1554, 1583, 1720, 1711, 1714, 1726 & 1556 RESPECTIVELY, J.L. NO. 4, UNDER PATULIA GRAM PANCHAYET, P.S.- KHARDAH, DIST. - NORTH-24-PARGANAS.

**ARCHITECTS**

**AGRAWAL & AGRAWAL**  
BARODA & KOLKATA

SCALE	DATE	DEALT	CHECKED
1:100			

The structural analysis reports & soil reports are kept for reference in this office the clearance is accorded subject to certificate of architect or Engineer, Geo- Tech Engineer.

Executive Engineer (P.U-Head) WBSPDA, North 24 Parganas District Unit  
Sanjay Kumar Bubeey  
Junior Engineer (BP)  
Barrackpore-II Dev. Block  
North 24 Parganas  
As per sec 72 of West Bengal Panchayat Samity Administrative Rule 2008  
Order No. CA/88/10098  
of Barrackpore-II Panchayat Samity  
Barrackpore-II Panchayat Samity

**SIGNATURE OF OWNER**