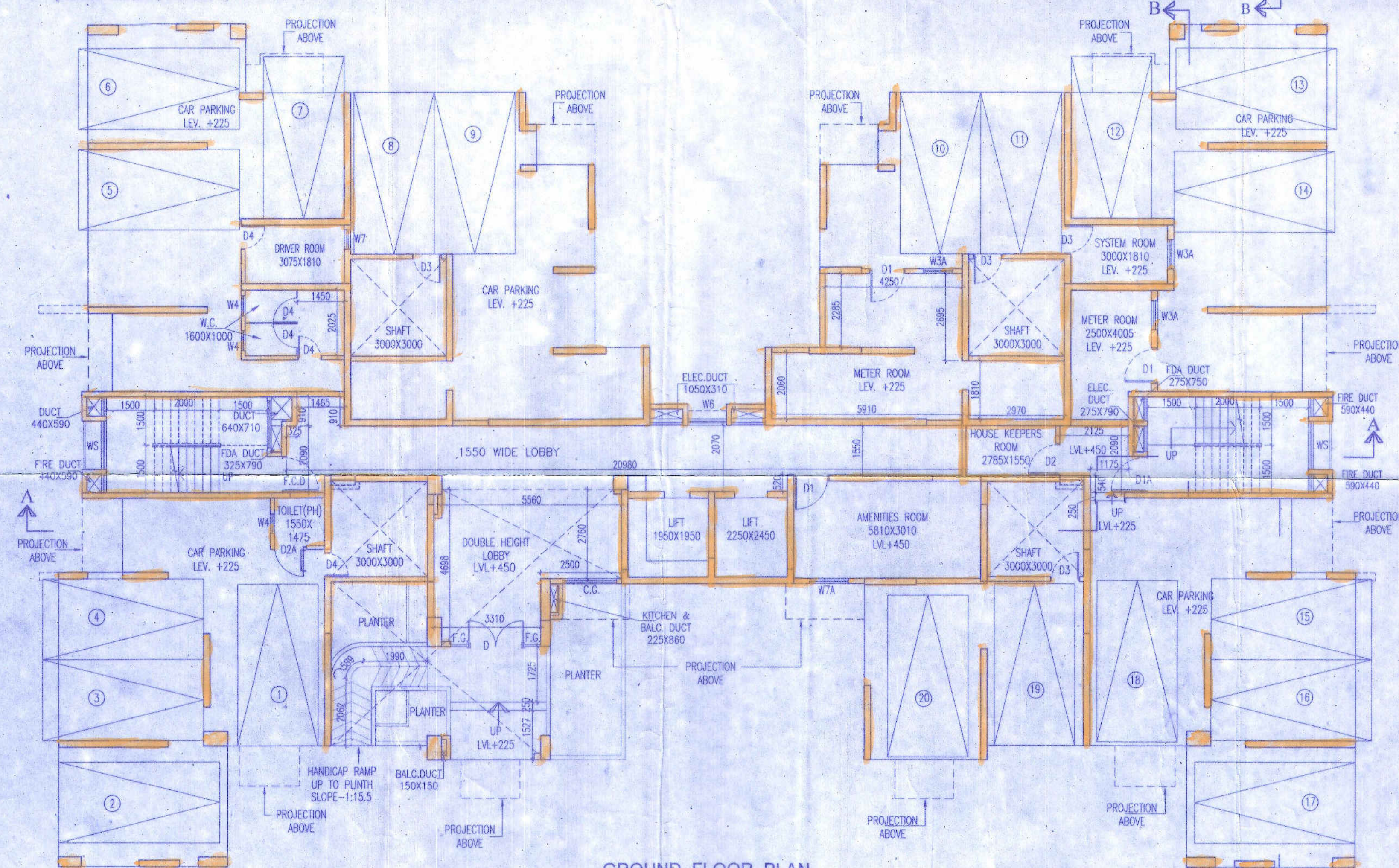
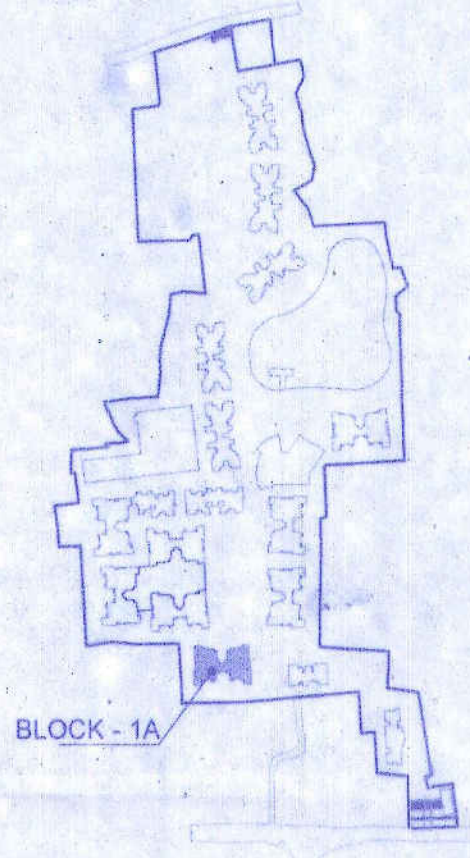


1ST. FLOOR PLAN



GROUND FLOOR PLAN



KEY PLAN N.T.S.

Name of the Land Owning Companies

1. Aadharsela Dealers Private Limited.
2. Aadharsela Tie Up Private Limited.
3. Anjanidham Marketing Private Limited.
4. Anjanidham Mercantile Private Limited.
5. Aravali Complex Private Limited.
6. Asthujha Complex Private Limited.
7. Asthujha Housing Private Limited.
8. Average Enclave Private Limited.
9. Average Heights Private Limited.
10. Average Properties Private Limited.
11. Average Residency Private Limited.
12. Baglamukhi Vyapar Private Limited.
13. Banglurumi Shoppers Private Limited.
14. Blockdeal Hirsa Private Limited.
15. Blockdeal Infracon Private Limited.
16. Blockdeal Nirman Private Limited.
17. Blockdeal Residency Private Limited.
18. Booster Residency Private Limited.
19. Circular Promoters Private Limited.
20. Coolhut Builders Private Limited.
21. Coolhut Enclave Private Limited.
22. Coolhut Hirsa Private Limited.
23. Coolhut Infracon Private Limited.
24. Coolhut Infrastructure Private Limited.
25. Coolhut Nirman Private Limited.
26. Coolhut Promoters Private Limited.
27. Coolhut Properties Private Limited.
28. Coolhut Realty Private Limited.
29. Coolhut Residency Private Limited.
30. Crossway Complex Private Limited.
31. Crossway Infracon Private Limited.
32. Crossway Realstate Private Limited.
33. Dayasindhu Vinmay Private Limited.
34. Devpujan Complex Private Limited.
35. Devpujan Hirsa Private Limited.
36. Devpujan Infracon Private Limited.
37. Devpujan Residency Private Limited.
38. Dhanaasha Commercial Private Limited.
39. Dhanaashri Traders Private Limited.
40. Dhansik Complex Private Limited.
41. Dhansik Developers Private Limited.
42. Dhansik Heights Private Limited.
43. Dhansik Housing Private Limited.
44. Dhansik Infracon Private Limited.
45. Dhansik Nirman Private Limited.
46. Dhansik Project Private Limited.
47. Dhansu'h Dealer Private Limited.
48. Fastner Realstate Private Limited.
49. Fastner Complex Private Limited.
50. Fastner Heights Private Limited.
51. Giridhan Commercial Private Limited.
52. Gopeshwari Enclave Private Limited.
53. Highpower Heights Private Limited.
54. Highpower Infracon Private Limited.
61. Hopeful Enclave Private Limited.
62. Hopeful Heights Private Limited.
63. Anjanidham Marketing Private Limited.
64. Hopeful Nirman Private Limited.
65. Hopeful Promoters Private Limited.
66. Hopeful Realstate Private Limited.
67. Hopeful Residency Private Limited.
68. Hopeful Residency Private Limited.
69. Jalashri Residency Private Limited.
70. Kalashidhi Exports Private Limited.
71. Lilong Heights Private Limited.
72. Lilong Infracon Private Limited.
73. Litemika Mercantile Private Limited.
74. Linkrose Dealer Private Limited.
75. Linkrose Distributors Private Limited.
76. Mangaldham Complex Private Limited.
77. Mangaldham Constructions Private Limited.
78. Mangaldham Developers Private Limited.
79. Mangaldham Enclave Private Limited.
80. Mangaldham Heights Private Limited.
81. Mangaldham Housing Private Limited.
82. Mangaldham Infracon Private Limited.
83. Mangaldham Nirman Private Limited.
84. Mangaldham Retailers Private Limited.
85. Mangalshri Shoppers Private Limited.
86. Mastery Complex Private Limited.
87. Mastery Enclave Private Limited.
88. Mastery Housing Private Limited.
89. Mastery Nirman Private Limited.
90. Mastery Realstate Private Limited.
91. Megapix Residency Private Limited.
92. Moonlike Vyapar Private Limited.
93. Moonlike Dealer Private Limited.
94. Moonlike Distributors Private Limited.
95. Mridul Complex Private Limited.
96. Mridul Enclave Private Limited.
97. Mridul Heights Private Limited.
98. Palanhar Vyapar Private Limited.
99. Panchmahal Vinmay Private Limited.
100. Panchmurti Complex Private Limited.
101. Panchmurti Constructions Private Limited.
102. Panchmurti Hirsa Private Limited.
103. Panchmurti Infracon Private Limited.
104. Panchmurti Promoters Private Limited.
105. Panchraton Complex Private Limited.
106. Panchraton Infracon Private Limited.
107. Panchraton Nirman Private Limited.
108. Panchraton Projects Private Limited.
109. Panchraton Realstate Private Limited.
110. Panchraton Residency Private Limited.
111. Paramount Traxim Private Limited.
112. Parampta Business Private Limited.
113. Pawansathi Buldocon Private Limited.
114. Pawansathi Builders Private Limited.
115. Pawansathi Enclave Private Limited.
116. Pawansathi Hirsa Private Limited.
117. Pawansathi Residency Private Limited.
118. Pawanshu Enclave Private Limited.
119. Pawanshu Gita Nirman Private Limited.
120. Pawanshu Hirsa Private Limited.
121. Pawanshu Housing Private Limited.
122. Pluto Hirsa Private Limited.
123. Pluto Residency Private Limited.
124. Power Point Buldocon Private Limited.
125. Power Point Dealers Private Limited.
126. Power Point Realty Private Limited.
127. Power Point Tie Up Private Limited.
128. Power Point Tracom Private Limited.
129. Prathampujay Vyapar Private Limited.
130. Primary Enclave Private Limited.
131. Primary Heights Private Limited.
132. Pushagadam Marketing Private Limited.
133. Pushagadam Retailers Private Limited.
134. Ratanashri Commercial Private Limited.
135. Rosefield Mercantile Private Limited.
136. Rossire-Vaniya Private Limited.
137. Rudramukhi Complex Private Limited.
138. Rudramukhi Constructions Private Limited.
139. Rudramukhi Hirsa Private Limited.
140. Rudramukhi Promoters Private Limited.
141. Rudramukhi Residency Private Limited.
142. Shivbhakti Constructions Private Limited.
143. Shivbhakti Vyapar Private Limited.
144. Shivpawan Complex Private Limited.
145. Shivpawan Developers Private Limited.
146. Shivpawan Heights Private Limited.
147. Shivpawan Housing Private Limited.
148. Shivpawan Infracon Private Limited.
149. Shivpawan Nirman Private Limited.
150. Shivpawan Properties Private Limited.
151. Shivpawan Realstate Private Limited.
152. Shivpawan Tradelink Private Limited.
153. Shivpawan Constructions Private Limited.
154. Shivpawal Mercantile Private Limited.
155. Shivpawal Vyapar Private Limited.
156. Shivratni Enclave Private Limited.
157. Shivratni Nirman Private Limited.
158. Shivratni Projects Private Limited.
159. Shivratni Promoters Private Limited.
160. Shivratni Realty Private Limited.
161. Shivratni Residency Private Limited.
162. Sidhimaya Vyapar Private Limited.
163. Snowwise Tradelink Private Limited.
164. Sun View Infracon Private Limited.
165. Tealok Commercial Private Limited.
166. Tealok Tradelink Private Limited.
167. Transways Complex Private Limited.
168. Transways Heights Private Limited.
169. Transways Infracon Private Limited.
170. Transways Projects Private Limited.
171. Tropex Vaniya Private Limited.
172. Vostro Complex Private Limited.
173. Wonder Vyapar Private Limited.
174. Devpujan Realstate Private Limited.
175. Hopeful Complex Private Limited.
176. Hopeful Housing Private Limited.
177. Megapix Complex Private Limited.
178. Shivpawan Enclave Private Limited.

SCHEDULE OF DOORS & WINDOWS			
MKD.	SILL	LINTEL	SIZE
D	-	2400	1800 X 2400
D1	-	2150	1100 X 2150
D1A	-	2150	1150 X 2150
D2	-	2150	1000 X 2150
D2A	250	2150	1000 X 2150
D2B	250	2250	1000 X 2000
D3	-	2150	900 X 2150
D4	-	2150	750 X 2150
D5	-	2150	600 X 2150
F.C.D.	-	2150	1150 X 2150
F.C.D.1	-	2250	1150 X 2250
SD1	-	2150	2000 X 2150
SD2	-	2150	1800 X 2150
SD3	-	2150	1500 X 2150
SD4	-	2150	1200 X 2150
W1	350	2150	1800 X 1800
W2	350	2150	850 X 1800
W3	1100	2150	900 X 1050
W3A	950	2150	900 X 1200
W4	1250	2150	600 X 900
W5	350	2150	1100X1800
W6	750	2250	1200X1500
W7	950	2150	600X1200
WS	950	2250	1500X1300
W7A	950	2150	1200X1200

CERTIFICATE OF STRUCTURAL STABILITY

WE HEREBY CERTIFY THAT THE FOUNDATION AND SUPERSTRUCTURE OF THE BUILDING PROPOSED FOR CONSTRUCTION ON MOUZA- PATULIA, DAG NOS- 696 (P), 697, 699, 699, 700, 737 (P), 743, 744 (P), 748, 750, 754, 755, 756, 757, 758, 759, 760, 761, 762, 766 (P), 768, 769, 770, 771, 772, 773, 774, 776, 777, 844 (P), 845 (P), 846, 847 (P), 849, 850, 851, 853, 854, 855, 856, 857, 858, 767/1687, 770/1251, 771/1252, 771/1253, 771/1254 & 856/1260, CORRESPONDING L.R. DAG NOS- 1595 (P), 1596, 1597, 1599, 1598, 1609, 1661 (P), 1702, 1635 (P), 1704, 1703, 1705, 1706, 1707, 1708, 1715, 1709, 1588, 1589, 1591, 1594, 1595 (P), 1587, 1586, 1712, 1710, 1713, 1717, 1718, 1825, 1824, 1738 (P), 1734 (P), 1733, 1732 (P), 1718, 1719, 1724, 1722, 1723, 1557, 1735, 1555, 1554, 1553, 1720, 1711, 1714, 1726 & 1556 RESPECTIVELY, J.L. NO- 4, UNDER PATULIA GRAM PANCHAYET, P. S- KHARDAH DISTRICT NORTH 24-PARGANAS HAVE BEEN SO DESIGNED BY US WILL MAKE SUCH FOUNDATION AND SUPERSTRUCTURE SAFE IN ALL RESPECTS INCLUDING THE CONSIDERATION OF BEARING CAPACITY & SETTLEMENT OF SOIL ETC.

JAY PRAKASH BHARAT KUMAR AGRAWAL
B. Arch., A.I.I.A.
Reg. No. CA / 86 / 10098
ARCHITECT SL. NO. - 32(A)

SANJAY KUMAR DUBEY
B.E. (Structural), Chartered Engineer (I)
Structural Engineer, ESE-1/142
Kolkata Municipal Corporation

SHYAMAL KUMAR MITRA, B.E. (CIVIL)
Geo-Technical Engineer
ENROLLMENT NO. GIER-HDCC/09/1919

SIGN OF STRUCTURAL ENGG.

SIGN OF GEO-TECH. ENGG.

THE PLAN HAVE BEEN PLANNED & DESIGNED IN COMPLIANCE OF THE THE WEST BENGAL MUNICIPAL BUILDING RULES 2007 FOLLOWED BY KHARDAH MUNICIPALITY, THE NEAREST MUNICIPALITY, ALL NORMS REGARDING BUILDING SAFETY INCLUDING STRUCTURAL STABILITY & FIRE SAFETY SHALL BE AS PER NBC.

JAY PRAKASH BHARAT KUMAR AGRAWAL
B. Arch., A.I.I.A.
Reg. No. CA / 86 / 10098
ARCHITECT SL. NO. - 32(A)

JAY PRAKASH BHARAT KUMAR AGRAWAL
B. Arch., A.I.I.A.
Reg. No. CA / 86 / 10098
ARCHITECT SL. NO. - 32(A)

TITLE :- GROUND FLOOR PLAN & FIRST FLOOR PLAN BLOCK 1A

PROJECT :- PROPOSED ADDITION OF 4 NOS. RESIDENTIAL BLOCKS [2 NOS. (G-XII) STORIED NAMEDLY - 5 & 6 AND 2 NOS. (G-XIII) STORIED NAMEDLY - 3B & 3C] AND 1 NO. (G-III) STORIED COMMERCIAL BLOCK WITH REVISED OF 7 NOS. BLOCKS [5 NOS. (G-XI) STORIED NAMEDLY - 1E, 1F, 1G, 1H, 1I AND 1 NO. (G-VIII) STORIED NAMEDLY - 3A] AND 8 NOS. SANCTIONED BLOCKS [7 NOS. (G-IV) STORIED NAMEDLY - 1A, 1B, 1C, 1D, 2A, 2B, 2D AND 1 NO. (G-II) STORIED NAMEDLY - 2C] UNDER CONSTRUCTION WITH REFERENCE TO THE APPROVAL FOR CONSTRUCTION WIDE PERMISSION NO. - 322/BK/PS/DATED 11/04/19 AND OUT OF 8 NOS. SANCTIONED BLOCKS 4 NOS. BLOCKS NAMEDLY - 1B, 1C, 1D & 2A) HAS BEEN OBTAINED. OCCUPANCY CERTIFICATE ON 05.04.2019 FROM BKP-II PANCHAYAT SAMITI, NORTH 24 PARGANAS IN RESIDENTIAL COMPLEX AT MOUZA - PATULIA, R.S. DAG NOS- 696 (P), 697, 699, 699, 700, 737 (P), 743, 744 (P), 749, 750, 754, 755, 756, 757, 758, 759, 760, 761, 762, 766 (P), 768, 769, 770, 771, 772, 773, 774, 776, 777, 844 (P), 845 (P), 846, 847 (P), 849, 850, 851, 853, 854, 855, 856, 857, 858, 767/1687, 770/1251, 771/1252, 771/1253, 771/1254 & 856/1260, CORRESPONDING L.R. DAG NOS- 1595 (P), 1596, 1597, 1599, 1598, 1599, 1601 (P), 1702, 1635 (P), 1704, 1703, 1705, 1706, 1707, 1708, 1715, 1709, 1588, 1589, 1591, 1594, 1585 (P), 1587, 1586, 1712, 1710, 1713, 1717, 1716, 1825, 1824, 1738 (P), 1734 (P), 1733, 1732 (P), 1718, 1719, 1724, 1722, 1723, 1557, 1735, 1555, 1554, 1553, 1720, 1711, 1714, 1726 & 1556 RESPECTIVELY, J.L. NO- 4, UNDER PATULIA GRAM PANCHAYET, P. S- KHARDAH, DIST. - NORTH 24-PARGANAS.

ARCHITECTS
AGRAWAL & AGRAWAL
BARODA & KOLKATA

SCALE 1:100 DATE 15.07.19 DEALT PALLABI CHECKED SUPRIYA

SIGN OF OWNER

The structural analysis reports & soil reports are kept for reference in this office. The clearance is accorded subject to certificate of architect & Engg. & Geo-Tech Engineer.

may be sanctioned
Subject to soil report
Jointly prepared by
Barackpore-11 Panchayat, North 24-Parganas

SANCTIONED
As per sec. 72 of
West Bengal Panchayat Samity
Administrative Rule 2008
Order No. 205/19.2010
of Barackpore-II Panchayat Samity

Authorized Signatory