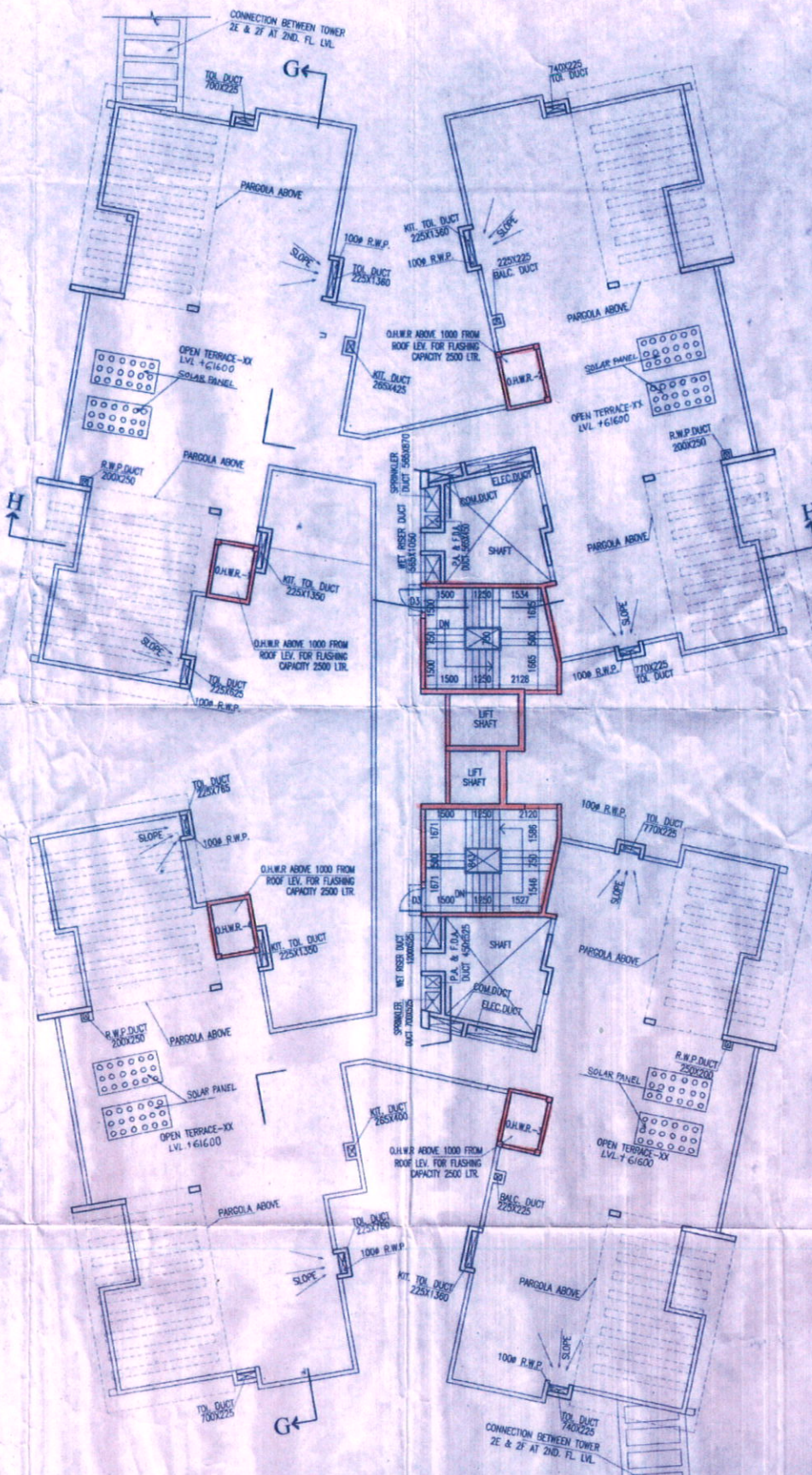
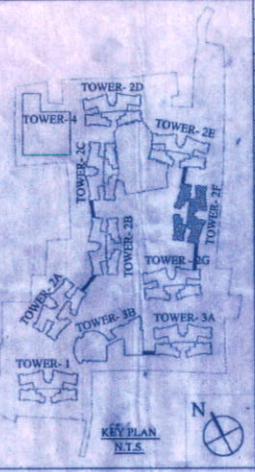


19TH. FLOOR PLAN



ROOF PLAN



SCHEDULE OF DOORS & WINDOWS

NO.	SILL	LINTEL	SIZE
D	-	2150	1200 X 2150
D1	-	2150	900 X 2150
D1a	250	2300	900 X 2050
D2	-	2150	750 X 2150
D3	-	2150	700 X 2150
D4	-	2150	1000 X 2150
DW	-	2400	2985 X 2400
DW1	-	2400	2345 X 2400
SD	-	2150	2100 X 2150
SD1	-	2150	1500 X 2100
F.C.D	-	2150	1125 X 2150
F.C.D1	-	2150	1198 X 2150
W	350	2150	2400 X 1900
W1	350	2150	2100 X 1900
W2	350	2150	1200 X 1800
W3	350	2150	850 X 1800
W4	1100	2150	1200 X 1050
W5	1250	2150	600 X 900
W6	350	2150	1200 X 1400
W7	750	2150	700 X 1800
SW	750	2450	1198 X 1700

- NAME OF OWNER
- NAME OF THE COMPANY
- M/s. Adya Real Estates Private Limited
 - M/s. Alifan Supply Private Limited
 - M/s. Anchar Vaniya Private Limited
 - M/s. Antrama Dealers Private Limited
 - M/s. Antrama Dealers Private Limited
 - M/s. Aravali Hirse Private Limited
 - M/s. Arch Vaniya Private Limited
 - M/s. Arpana Consultancy Private Limited
 - M/s. Arpana Tie Up Private Limited
 - M/s. Artline Homes Private Limited
 - M/s. Artline Projects Private Limited
 - M/s. Artline Realstate Private Limited
 - M/s. Average Complex Private Limited
 - M/s. Average Housing Private Limited
 - M/s. Average Infracon Private Limited
 - M/s. Average Nirman Private Limited
 - M/s. Average Projects Private Limited
 - M/s. Basudev Enclave Private Limited
 - M/s. Basudev Housing Private Limited
 - M/s. Bluebird Tie Up Private Limited
 - M/s. Booster Heights Private Limited
 - M/s. Booster Hirse Private Limited
 - M/s. Brihumi Agents Private Limited
 - M/s. Brihumi Tie Up Private Limited
 - M/s. Cityways Vyapar Private Limited
 - M/s. Crossway Heights Private Limited
 - M/s. Crossway Nirman Private Limited
 - M/s. Dayanidhi Suppliers Private Limited
 - M/s. Delta Vyapar Private Limited
 - M/s. Dhanganga Hirse Private Limited
 - M/s. Dhanganga Infracon Private Limited
 - M/s. Dhanganga Realty Private Limited
 - M/s. Dhanganga Residency Private Limited
 - M/s. Dreamland Hirse Private Limited
 - M/s. Elegant Nirman Private Limited
 - M/s. Gajaban Vinimay Private Limited
 - M/s. Gajamani Buldoon Private Limited
 - M/s. Gajamani Constructions Private Limited
 - M/s. Gajamani Hirse Private Limited
 - M/s. Gajamani Realty Private Limited
 - M/s. Gajamukhi Enclave Private Limited
 - M/s. Gajamukhi Homes Private Limited
 - M/s. Gajamukhi Infracon Private Limited
 - M/s. Gajamukhi Nirman Private Limited
 - M/s. Gajamukhi Projects Private Limited
 - M/s. Gajamukhi Realstate Private Limited
 - M/s. Ganesh Tracem Private Limited
 - M/s. Ganeshani Promoters Private Limited
 - M/s. Greentop Nirman Private Limited
 - M/s. Guidance Vyapar Private Limited
 - M/s. Gulmarg Vyapar Private Limited
 - M/s. Hanurang Tie Up Private Limited
 - M/s. Indiar Tracem Private Limited
 - M/s. Jainendra Distributors Private Limited
 - M/s. Jainendra Marketing Private Limited
 - M/s. Jainendra Merchants Private Limited
 - M/s. Jainendra Advisory Private Limited
 - M/s. Jainendra Tie Up Private Limited
 - M/s. Jhimil Sales Private Limited
 - M/s. Jhimil Vyapar Private Limited
 - M/s. Juhi Marketing Private Limited
 - M/s. Kakaroti Enclave Private Limited
 - M/s. Kakaroti Homes Private Limited
 - M/s. Kakaroti Housing Private Limited
 - M/s. Kakaroti Properties Private Limited
 - M/s. Kakaroti Realty Private Limited
 - M/s. Kamyabi Consultants Private Limited
 - M/s. Lifelong Enclave Private Limited
 - M/s. Linnights Hirse Private Limited
 - M/s. Linkrose Constructions Private Limited
 - M/s. Linkrose Housing Private Limited
 - M/s. Linkrose Residency Private Limited
 - M/s. Manobal Dealer Private Limited
 - M/s. Manobal Vaniya Private Limited
 - M/s. Matrix Sales Private Limited
 - M/s. Maxflow Barter Private Limited
 - M/s. Moonville Constructions Private Limited
 - M/s. Moonville Nirman Private Limited
 - M/s. Moonville Residency Private Limited
 - M/s. Mridul Advisory Private Limited
 - M/s. Newwade Merchants Private Limited
 - M/s. Original Realty Private Limited
 - M/s. Paragat Supply Private Limited
 - M/s. Pawangdra Barter Private Limited
 - M/s. Pawangdra Sales Private Limited
 - M/s. Prabhakar Barter Private Limited
 - M/s. Prabhakar Commercial Private Limited
 - M/s. Prabhakar Dealer Private Limited
 - M/s. Pransagar Advisory Private Limited
 - M/s. Pransagar Tie Up Private Limited
 - M/s. Prime Rose Marketing Private Limited
 - M/s. Radial Housing Private Limited
 - M/s. Radial Residency Private Limited
 - M/s. Rijnim Commodities Private Limited
 - M/s. Rosemary Distributors Private Limited
 - M/s. Rosemary Tie Up Private Limited
 - M/s. Sadabhar Vyapar Private Limited
 - M/s. Sagun Advisory Services Private Limited
 - M/s. Sanjivani Vaniya Private Limited
 - M/s. Sargam Vyapar Private Limited
 - M/s. Sawang Vaniya Private Limited
 - M/s. Shivasthal Dealers Private Limited
 - M/s. Siddha Style Barter Private Limited
 - M/s. Sidhan Suppliers Private Limited
 - M/s. Silverline Vaniya Private Limited
 - M/s. Skylink Merchants Private Limited
 - M/s. Spandan Suppliers Private Limited
 - M/s. Splendor Vyapar Private Limited
 - M/s. Style Merchants Private Limited
 - M/s. Sukhjit Vyapar Private Limited
 - M/s. Sunmat Vyapar Private Limited
 - M/s. Sunshine Barter Private Limited
 - M/s. Superior Complex Private Limited
 - M/s. Superior Hirse Private Limited
 - M/s. Surlidhi Advisory Private Limited
 - M/s. Sursarita Advisory Services Private Limited
 - M/s. Sursarita Consultants Private Limited
 - M/s. Sursarita Barter Private Limited
 - M/s. Terapanth Consultancy Services Private Limited
 - M/s. Timeless Realstate Private Limited
 - M/s. Toptan Vyapar Private Limited
 - M/s. Vidhata Advisory Services Private Limited

CERTIFICATE OF STRUCTURAL ENGINEER

CERTIFY THAT THE STRUCTURAL DRAWING AND DESIGN OF BOTH THE FOUNDATION AND SUPERSTRUCTURE OF THE BUILDING / BUILDINGS HAS BEEN MADE CONSIDERING THE SOIL TEST REPORT, AS PER THE RULES AND REGULATIONS MADE UNDER THE ACT AND ALSO, CONSIDERING ALL POSSIBLE LOADS, SEISMIC LOAD AND THE MOMENTS GENERATED BY THE PROPOSED STRUCTURE AS PER THE BUREAU OF INDIAN STANDARD AND NATIONAL BUILDING CODE OF INDIA AND CERTIFIED THAT IT IS SAFE AND STABLE IN ALL RESPECT AND THESE PROVISIONS SHALL BE ADHERED TO DURING THE CONSTRUCTION.

SANJIV J. PAREKH
ALL INDIA STRUCTURAL ENGINEER
REG. NO. 18/18950

SIGNATURE OF STRUCTURAL ENGINEER

CERTIFICATE OF ARCHITECT

I CERTIFY THAT ALL THE ARCHITECTURAL DRAWINGS OF THE PROJECT AT R.S.DAG NOS-473,474, 475,476,477,478,479,480, 481, 482,483, 484, 485, 486, 487, 488, 489, 490, 500(P), 502(P), 503 (P) 504(P), 506(P),507(P), 509(P), 526(P),531,532,533&551/743 CP, OF MOUZA - BHATENDA, J.L. NO.28 HAVE BEEN PREPARED BY ME COMPLYING WITH THE NEW TOWN KOLKATA PLANNING AREA (BUILDING) RULES, 2014. I ALSO CERTIFY THAT THE PLANS AND DRAWINGS PREPARED BY ME COMPLYING WITH ALL THE PROVISIONS REGARDING THE FIRE PROTECTION AS PER THE PREVAILING NATIONAL BUILDING CODE OF INDIA. I SHALL BE HELD RESPONSIBLE IF ANY INCORRECT INFORMATION IS FURNISHED BY ME OR ANY VIOLATION OF PROVISIONS OF THESE RULES OR THE PREVAILING NATIONAL BUILDING CODE IS FOUND IN ANY OF THE DRAWINGS AND DOCUMENTS, SIGNED BY ME AND SUBMITTED TO THE SANCTIONING AUTHORITY FOR OBTAINING SANCTION.

M. Agrawal

MONAL AGRWAL
Regd. Architect
New Town Kolkata Development Authority
Enrollment No. ACAR020100028

SIGNATURE OF ARCHITECT

CERTIFICATE OF GEO - TECHNICAL ENGINEER

IT IS CERTIFIED THAT THE COMPREHENSIVE GEO-TECHNICAL REPORT ON SOIL INVESTIGATION HAS BEEN PREPARED BY ME FOR DESIGN AND CALCULATION OF THE FOUNDATION BY ANALYZING THE SOIL SAMPLES FOR ESTIMATING THE BEARING CAPACITY OF THE SOIL ON WHICH FOUNDATION OF THE STRUCTURE WILL BE CONSTRUCTED. I SHALL ALSO CHECK THE NATURE OF THE SOIL AFTER EXCAVATION AT THE SITE SO THAT FOUNDATION IS EXTENDED UP TO THE APPROPRIATE DEPTH THAT HAS BEEN PROPOSED IN THE GEO-TECHNICAL REPORT.

ENTAMAL KUMAR MITRA, B.E. CIVIL
REG. NO. 018-INDCOENR00018

SIGNATURE OF GEO - TECHNICAL ENGINEER

SIGNATURE OF TOWN PLANNER OR URBAN DESIGNER

Subir Ranjan Sarkar
New Town Kolkata Development Authority
Enrollment No.: TPER/UKDA/1000036

SIGNATURE OF STRUCTURAL REVIEWER

SANJIB GUHA
BSC, DCE, P.E-(P)-15654-6
REGISTERED ENGINEER
STRV/NKDA/1500003

TITLE: 19TH FLOOR PLAN (TOWER-2F)

PROJECT: REVISED (GHI), (BH-G-VII) AND (G-XIX) STORED RESIDENTIAL BUILDINGS AT MOUZA - BHATENDA, R.S.DAG NOS-473, 474, 475, 476, 477, 478, 479, 480, 481, 482, 483, 484, 485, 486, 487, 488, 489, 490, 491, 492, 493, 494, 495, 496, 497, 498, 499, 500, 501, 502, 503, 504, 505, 506, 507, 508, 509, 510, 511, 512, 513, 514, 515, 516, 517, 518, 519, 520, 521, 522, 523, 524, 525, 526, 527, 528, 529, 530, 531, 532, 533, 534, 535, 536, 537, 538, 539, 540, 541, 542, 543, 544, 545, 546, 547, 548, 549, 550, 551, 552, 553, 554, 555, 556, 557, 558, 559, 560, 561, 562, 563, 564, 565, 566, 567, 568, 569, 570, 571, 572, 573, 574, 575, 576, 577, 578, 579, 580, 581, 582, 583, 584, 585, 586, 587, 588, 589, 590, 591, 592, 593, 594, 595, 596, 597, 598, 599, 600, 601, 602, 603, 604, 605, 606, 607, 608, 609, 610, 611, 612, 613, 614, 615, 616, 617, 618, 619, 620, 621, 622, 623, 624, 625, 626, 627, 628, 629, 630, 631, 632, 633, 634, 635, 636, 637, 638, 639, 640, 641, 642, 643, 644, 645, 646, 647, 648, 649, 650, 651, 652, 653, 654, 655, 656, 657, 658, 659, 660, 661, 662, 663, 664, 665, 666, 667, 668, 669, 670, 671, 672, 673, 674, 675, 676, 677, 678, 679, 680, 681, 682, 683, 684, 685, 686, 687, 688, 689, 690, 691, 692, 693, 694, 695, 696, 697, 698, 699, 700, 701, 702, 703, 704, 705, 706, 707, 708, 709, 710, 711, 712, 713, 714, 715, 716, 717, 718, 719, 720, 721, 722, 723, 724, 725, 726, 727, 728, 729, 730, 731, 732, 733, 734, 735, 736, 737, 738, 739, 740, 741, 742, 743, 744, 745, 746, 747, 748, 749, 750, 751, 752, 753, 754, 755, 756, 757, 758, 759, 760, 761, 762, 763, 764, 765, 766, 767, 768, 769, 770, 771, 772, 773, 774, 775, 776, 777, 778, 779, 780, 781, 782, 783, 784, 785, 786, 787, 788, 789, 790, 791, 792, 793, 794, 795, 796, 797, 798, 799, 800, 801, 802, 803, 804, 805, 806, 807, 808, 809, 810, 811, 812, 813, 814, 815, 816, 817, 818, 819, 820, 821, 822, 823, 824, 825, 826, 827, 828, 829, 830, 831, 832, 833, 834, 835, 836, 837, 838, 839, 840, 841, 842, 843, 844, 845, 846, 847, 848, 849, 850, 851, 852, 853, 854, 855, 856, 857, 858, 859, 860, 861, 862, 863, 864, 865, 866, 867, 868, 869, 870, 871, 872, 873, 874, 875, 876, 877, 878, 879, 880, 881, 882, 883, 884, 885, 886, 887, 888, 889, 890, 891, 892, 893, 894, 895, 896, 897, 898, 899, 900, 901, 902, 903, 904, 905, 906, 907, 908, 909, 910, 911, 912, 913, 914, 915, 916, 917, 918, 919, 920, 921, 922, 923, 924, 925, 926, 927, 928, 929, 930, 931, 932, 933, 934, 935, 936, 937, 938, 939, 940, 941, 942, 943, 944, 945, 946, 947, 948, 949, 950, 951, 952, 953, 954, 955, 956, 957, 958, 959, 960, 961, 962, 963, 964, 965, 966, 967, 968, 969, 970, 971, 972, 973, 974, 975, 976, 977, 978, 979, 980, 981, 982, 983, 984, 985, 986, 987, 988, 989, 990, 991, 992, 993, 994, 995, 996, 997, 998, 999, 1000.

AGRAWAL & AGRAWAL

SCALE	DATE	SHEET NO.	DEPT.	CHECKED
1:100	06.10.16	26 OF 31	SRUP	SHILA

NOTE: * THIS WINDOW IS PROVIDED ONLY FOR ACCESS TO A.C. LEDGE FOR MAINTENANCE OF A.C.

SIGNATURE OF OWNER

