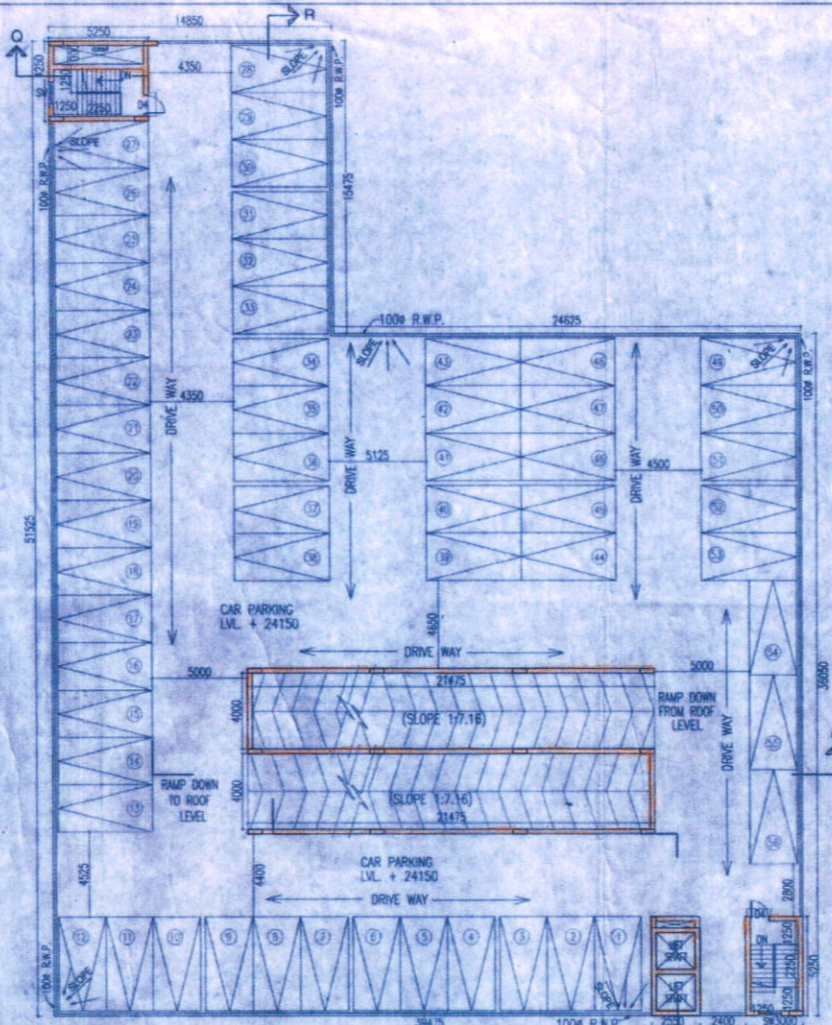
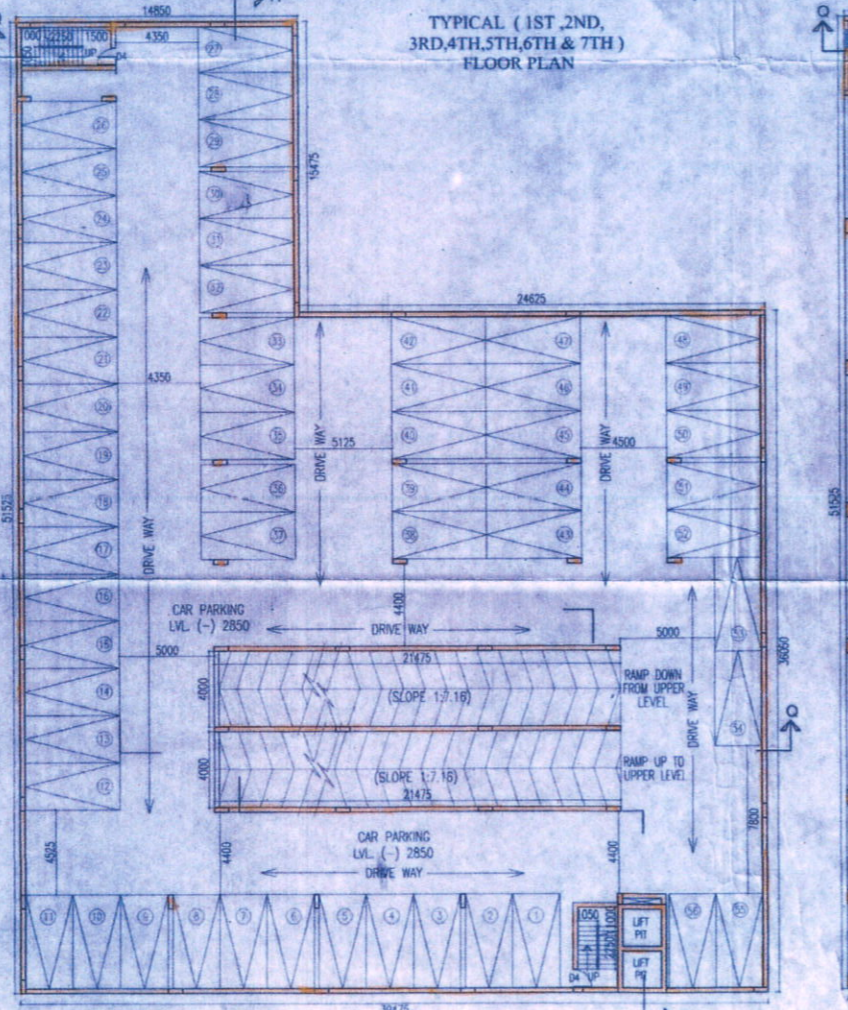


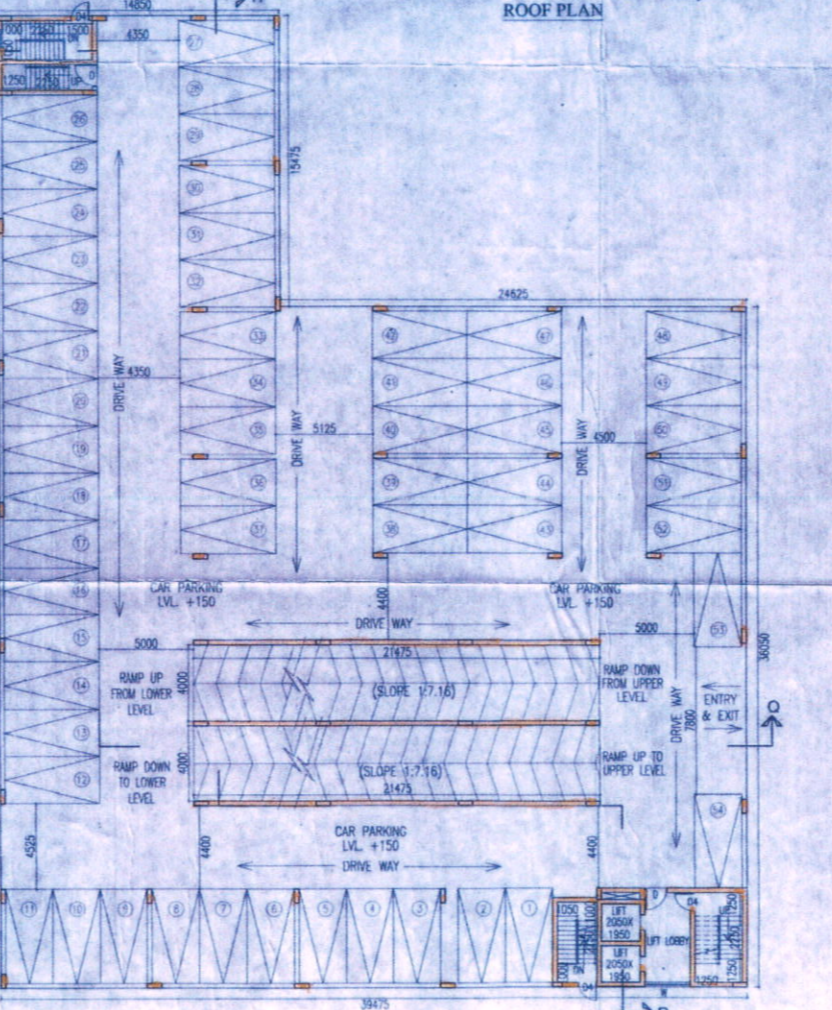
TYPICAL (1ST, 2ND, 3RD, 4TH, 5TH, 6TH & 7TH) FLOOR PLAN



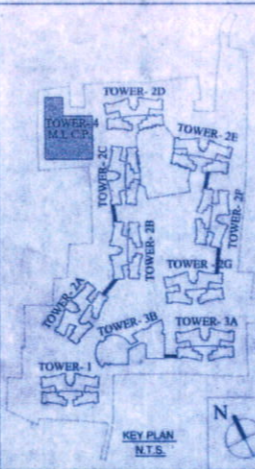
ROOF PLAN



BASEMENT FLOOR PLAN



GROUND FLOOR PLAN



KEY PLAN N.T.S.

- NAME OF OWNER
NAME OF THE COMPANY
1. M/s. Adya Real Estates Private Limited
 2. M/s. Alishan Supply Private Limited
 3. M/s. Anchor Vanija Private Limited
 4. M/s. Anratma Advisory Private Limited
 5. M/s. Anratma Dealers Private Limited
 6. M/s. Anukaran Supply Private Limited
 7. M/s. Aravali Hirse Private Limited
 8. M/s. Arch Vanija Private Limited
 9. M/s. Arpana Consultancy Private Limited
 10. M/s. Arpana Tie Up Private Limited
 11. M/s. Artline Homes Private Limited
 12. M/s. Artline Projects Private Limited
 13. M/s. Artline Realstate Private Limited
 14. M/s. Average Complex Private Limited
 15. M/s. Average Housing Private Limited
 16. M/s. Average Infracon Private Limited
 17. M/s. Average Nirman Private Limited
 18. M/s. Average Projects Private Limited
 19. M/s. Basudev Enclave Private Limited
 20. M/s. Basudev Housing Private Limited
 21. M/s. Bluebird Tie Up Private Limited
 22. M/s. Booster Heights Private Limited
 23. M/s. Booster Hirse Private Limited
 24. M/s. Brijbhumi Agents Private Limited
 25. M/s. Brijbhumi Tie Up Private Limited
 26. M/s. Chyings Vyapaar Private Limited
 27. M/s. Crossway Heights Private Limited
 28. M/s. Crossway Nirman Private Limited
 29. M/s. Dayanidhi Suppliers Private Limited
 30. M/s. Delta Vyapaar Private Limited
 31. M/s. Dhanganga Hirse Private Limited
 32. M/s. Dhanganga Infracon Private Limited
 33. M/s. Dhanganga Realty Private Limited
 34. M/s. Dhanganga Residency Private Limited
 35. M/s. Dreamland Hirse Private Limited
 36. M/s. Elegant Nirman Private Limited
 37. M/s. Gajbadan Vinimay Private Limited
 38. M/s. Gajgami Buldocon Private Limited
 39. M/s. Gajgami Constructions Private Limited
 40. M/s. Gajgami Hirse Private Limited
 41. M/s. Gajgami Realty Private Limited
 42. M/s. Gajmukhi Enclave Private Limited
 43. M/s. Gajmukhi Homes Private Limited
 44. M/s. Gajmukhi Infracon Private Limited
 45. M/s. Gajmukhi Nirman Private Limited
 46. M/s. Gajmukhi Projects Private Limited
 47. M/s. Gajmukhi Realstate Private Limited
 48. M/s. Ganesh Tracom Private Limited
 49. M/s. Ganeshvani Promoters Private Limited
 50. M/s. Greentop Nirman Private Limited
 51. M/s. Guidante Vyapaar Private Limited
 52. M/s. Gullmarg Vyapaar Private Limited
 53. M/s. Hanurang Tie Up Private Limited
 54. M/s. Indivar Tracom Private Limited
 55. M/s. Jainendra Distributors Private Limited
 56. M/s. Jainendra Marketing Private Limited
 57. M/s. Jainendra Merchants Private Limited
 58. M/s. Jaldham Advisory Private Limited
 59. M/s. Jaldham Tie Up Private Limited
 60. M/s. Jhilmil Sales Private Limited
 61. M/s. Jhilmil Vyapaar Private Limited
 62. M/s. Jinay Merchants Private Limited
 63. M/s. Juhli Marketing Private Limited
 64. M/s. Kalakriti Enclave Private Limited
 65. M/s. Kalakriti Homes Private Limited
 66. M/s. Kalakriti Housing Private Limited
 67. M/s. Kalakriti Properties Private Limited
 68. M/s. Kalakriti Realty Private Limited
 69. M/s. Kamyabi Consultants Private Limited
 70. M/s. Lifeelong Enclave Private Limited
 71. M/s. Limelight Hirse Private Limited
 72. M/s. Linkrose Constructions Private Limited
 73. M/s. Linkrose Housing Private Limited
 74. M/s. Linkrose Residency Private Limited
 75. M/s. Manobal Dealer Private Limited
 76. M/s. Manobal Vanija Private Limited
 77. M/s. Matrix Sales Private Limited
 78. M/s. Maxflow Barter Private Limited
 79. M/s. Moonlife Constructions Private Limited
 80. M/s. Moonlife Nirman Private Limited
 81. M/s. Moonlife Residency Private Limited
 82. M/s. Mridul Advisory Private Limited
 83. M/s. Newwave Merchants Private Limited
 84. M/s. Original Realty Private Limited
 85. M/s. Parghat Supply Private Limited
 86. M/s. Pawanputra Barter Private Limited
 87. M/s. Pawanputra Sales Private Limited
 88. M/s. Prabhakar Barter Private Limited
 89. M/s. Prajapati Commercial Private Limited
 90. M/s. Prajapati Dealer Private Limited
 91. M/s. Preamsagar Advisory Private Limited
 92. M/s. Preamsagar Tie Up Private Limited
 93. M/s. Prime Rose Marketing Private Limited
 94. M/s. Radial Housing Private Limited
 95. M/s. Radial Residency Private Limited
 96. M/s. Rimbhuj Commodities Private Limited
 97. M/s. Rosemary Distributors Private Limited
 98. M/s. Rosemary Tie Up Private Limited
 99. M/s. Sadabahar Vyapaar Private Limited
 100. M/s. Sagun Advisory Services Private Limited
 101. M/s. Sanjivani Vanija Private Limited
 102. M/s. Sargam Vyapaar Private Limited
 103. M/s. Sawarg Vanija Private Limited
 104. M/s. Shvashthal Dealers Private Limited
 105. M/s. Shvashthal Sales Private Limited
 106. M/s. Siddha Style Barter Private Limited
 107. M/s. Siddhant Suppliers Private Limited
 108. M/s. Silverline Vinimay Private Limited
 109. M/s. Skylink Merchants Private Limited
 110. M/s. Spandan Suppliers Private Limited
 111. M/s. Splendor Vyapaar Private Limited
 112. M/s. Style Merchants Private Limited
 113. M/s. Sukhjit Vyapaar Private Limited
 114. M/s. Sunmart Vyapaar Private Limited
 115. M/s. Sunshyne Barter Private Limited
 116. M/s. Superior Complex Private Limited
 117. M/s. Superior Hirse Private Limited
 118. M/s. Surdhuni Advisory Private Limited
 119. M/s. Sursarita Advisory Services Private Limited
 120. M/s. Sursarita Consultants Private Limited
 121. M/s. Swastik Barter Private Limited
 122. M/s. Terapanthi Consultancy Services Private Limited
 123. M/s. Timeless Realstate Private Limited
 124. M/s. Topten Vyapaar Private Limited
 125. M/s. Vidhata Advisory Services Private Limited

SCHEDULE OF DOORS & WINDOWS			
NO.	SILL	LINTEL	SIZE
D	2150	1200	1200 X 2150
D1	2150	900	900 X 2150
D1a	250	2300	900 X 2050
D2	2150	750	750 X 2150
D2a	2150	700	700 X 2150
D3	2150	1000	1000 X 2150
DW	2400	2985	2985 X 2400
DW1	2400	2345	2345 X 2400
SD	2150	2100	2100 X 2150
SD1	2150	1500	1500 X 2150
F.C.D1	2150	1125	1125 X 2150
F.C.D1	2150	1198	1198 X 2150
W	350	2150	2400 X 1800
W1	350	2150	2100 X 1800
W2	350	2150	1200 X 1800
W3	350	2150	850 X 1800
W4	1100	2150	1200 X 1050
W5	1250	2150	900 X 900
W6	350	2150	1200 X 1800
W7	750	2150	700 X 1400
SW	750	2450	1198 X 1700

CERTIFICATE OF STRUCTURAL ENGINEER
 CERTIFY THAT THE STRUCTURAL DRAWING AND DESIGN OF BOTH THE FOUNDATION AND SUPERSTRUCTURE OF THE BUILDING / BUILDINGS HAS BEEN MADE CONSIDERING THE SOIL TEST REPORT AS PER THE RULES AND REGULATIONS MADE UNDER THE ACT AND ALSO CONSIDERING ALL POSSIBLE LOADS, SEISMIC LOAD AND THE LOADS GENERATED BY THE PROPOSED STRUCTURE AS PER THE BUREAU OF INDIAN STANDARD AND NATIONAL BUILDING CODE OF INDIA AND CERTIFIED THAT IT IS SAFE AND STABLE IN ALL RESPECT AND THESE PROVISIONS SHALL BE ADHERED TO DURING THE CONSTRUCTION.

SANJIV J. PAREKH
 M.E. (STRUCT. & CONST. ENG.)
 B. C. E. FILE-115654-5
 STRV/NKDA / 10/00030

SIGNATURE OF STRUCTURAL ENGG.

CERTIFICATE OF ARCHITECT

I CERTIFY THAT ALL THE ARCHITECTURAL DRAWINGS OF THE PROJECT AT P.S. DAG NOS. 473, 474, 475, 476, 477, 478, 480, 470(P), 481(P), 482, 483, 484, 485, 486, 487, 488, 500, 501(P), 502(P), 503(P), 504(P), 505(P), 507(P), 508(P), 509(P), 510(P), 511(P), 512(P), 513(P), 514(P), 515(P) OF MOUZA - BHATENDRA, J.L. NO. 28 HAVE BEEN PREPARED BY ME COMPLYING WITH THE NEW TOWN KOLKATA PLANNING AREA (BUILDING) RULES, 2014. I ALSO CERTIFY THAT THE PLANS AND DRAWINGS PREPARED BY ME COMPLYING WITH ALL THE PROVISIONS REGARDING THE FIRE PROTECTION AS PER THE PREVAILING NATIONAL BUILDING CODE OF INDIA SHALL BE HELD RESPONSIBLE IF ANY INCORRECT INFORMATION IS FURNISHED BY ME OR ANY VIOLATION OF PROVISIONS OF THESE RULES OR THE PREVAILING NATIONAL BUILDING CODE IS FOUND IN ANY OF THE DRAWINGS AND DOCUMENTS, SIGNED BY ME AND SUBMITTED TO THE SANCTIONING AUTHORITY FOR OBTAINING SANCTION.

SIGNATURE OF ARCHITECT

MONAL AGRAWAL
 Regd. Architect
 New Town Kolkata Development Authority
 Enrolment No. ACR/NKDA/10/00028

SIGNATURE OF ARCHITECT - TECHNICAL ENGINEER

CERTIFICATE OF GEO - TECHNICAL ENGINEER

IT IS CERTIFIED THAT THE COMPREHENSIVE GEO-TECHNICAL REPORT ON SOIL INVESTIGATION HAS BEEN PREPARED BY ME FOR DESIGN AND CALCULATION OF THE FOUNDATION BY ANALYZING THE SOIL SAMPLES FOR ESTIMATING THE BEARING CAPACITY OF THE SOIL ON WHICH FOUNDATION OF THE STRUCTURE WILL BE CONSTRUCTED. I SHALL ALSO CHECK THE NATURE OF THE SOIL AFTER EXCAVATION AT SITE SO THAT FOUNDATION IS EXTENDED UP TO THE APPROPRIATE DEPTH THAT HAS BEEN PROVIDED IN THE GEO-TECHNICAL REPORT.

SIGNATURE OF GEO - TECHNICAL ENGINEER

SIGNATURE OF TOWN PLANNER OR URBAN DESIGNER

Subir Ranjan Sarkar
 Regd. Town Planner
 New Town Kolkata Development Authority
 Enrolment No.: TPER/NKDA/10/00035

SIGNATURE OF STRUCTURAL REVIEWER

SANJIB GUHA
 BSC, BCE, FIE-115654-5
 CHARTERED ENGINEER
 STRV/NKDA/15/00003

TITLE

BASEMENT PLAN, GROUND FLOOR PLAN, M.L.C.P - 1, M.L.C.P - 2, M.L.C.P - 3, M.L.C.P - 4, M.L.C.P - 5, M.L.C.P - 6, M.L.C.P - 7, TOWER - 4 (M.L.C.P.)

PROJECT
 REVISED (O-HA, O-H-VII) AND (O-VIX) STORED RESIDENTIAL BUILDINGS AT MOUZA - BHATENDRA, P.S. DAG NOS. 473, 474, 475, 476, 477, 478, 479, 480, 483, 484, 485, 486, 487, 488, 500, 501(P), 502(P), 503(P), 504(P), 505(P), 507(P), 508(P), 509(P), 510(P), 511(P), 512(P), 513(P), 514(P), 515(P) RECORDED IN L.H. KHATIAN NOS. 2821, 3233, 3281, 3283, 3248, 3285, 3286, 3282, 2849, 2848, 2847, 2846, 3234, 3315, 2855, 2856, 2857, 2858, 2859, 3318, 3317, 3412, 3341, 3340, 2863, 2866, 2865, 2862, 2861, 2860, 2864, 2867, 3302, 3304, 3305, 3301, 3303, 3305, 3312, 2853, 3136, 3307, 3309, 3311, 3310, 3308, 3313, 3411, 3314, 3288, 3287, 2850, 2829, 2828, 2827, 2826, 2825, 2845, 2844, 2843, 2842, 2841, 2840, 2839, 2838, 2837, 2836, 2835, 2834, 2833, 2832, 3240, 2815, 3316, 2854, 2809, 2808, 2814, 2819, 2850, 2851, 2852, 2822, 2823, 2824, 2796, 2797, 2798, 2799, 2816, 2817, 2818, 2810, 2811, 2812, 2813, 2792, 2793, 2794, 2795, 2820, 3073, 3072, 3238, 3236, 3237, 3235, 3239, 3256, 2860, 2861, 2862, 2863, 2864, 3071, 3265, 4092, 3279, 3070, 2866, 2831 & 2865, MOUZA - BHATENDRA, J.L. NO. 28 PARGANAS, PREVIOUSLY SANCTIONED AND APPROVED BY EXECUTIVE OFFICER OF RAJARHAT PANCHAYAT SAMITY, DATED 15/12/15

ARCHITECTS				
AGRAWAL & AGRAWAL				
BARODA	KOLKATA	DATE	SHEET NO.	CHECKED
		06.12.16	30 OF 41	SHR.A

Authorized Signatory

SIGNATURE OF OWNER

NEW TOWN KOLKATA DEVELOPMENT AUTHORITY
 CHIEF ARCHITECT
 NEW TOWN KOLKATA DEVELOPMENT AUTHORITY

Executive Officer
 Rajaraj Panchayat Gandy

31/07/18

NEW TOWN KOLKATA DEVELOPMENT AUTHORITY
 Assistant Architect
 SUKART GHATGEJIB

S. Sanyal
 Sanyal Sanyal

NEW TOWN KOLKATA DEVELOPMENT AUTHORITY

N. Original Certificate for

Sanction of Building Plan for Construction Purpose

Memo No. 3622(3)/NKA/BP-5-04(3)/2014

Date: 30.07.2018

Building Particulars: Proposed residential (G+11), (G+G+V11), (G+X11)
 Ground Floor: Commercial (G+11), (G+V11), (G+X11)
 H.S. Road: North-2473
 Note: - The proposal is recommended for approval subject to submission of structural drawings.

Sanyal Sanyal

Assistant Architect

NEW TOWN KOLKATA DEVELOPMENT AUTHORITY

CHIEF ARCHITECT

NEW TOWN KOLKATA DEVELOPMENT AUTHORITY

Executive Officer

Rajaraj Panchayat Gandy

NEW TOWN KOLKATA DEVELOPMENT AUTHORITY

CHIEF ARCHITECT

NEW TOWN KOLKATA DEVELOPMENT AUTHORITY

CHIEF ARCHITECT

NEW TOWN KOLKATA DEVELOPMENT AUTHORITY

CHIEF ARCHITECT

NEW TOWN KOLKATA DEVELOPMENT AUTHORITY

CHIEF ARCHITECT

NEW TOWN KOLKATA DEVELOPMENT AUTHORITY

CHIEF ARCHITECT

NEW TOWN KOLKATA DEVELOPMENT AUTHORITY

CHIEF ARCHITECT

NEW TOWN KOLKATA DEVELOPMENT AUTHORITY

CHIEF ARCHITECT

NEW TOWN KOLKATA DEVELOPMENT AUTHORITY

CHIEF ARCHITECT

NEW TOWN KOLKATA DEVELOPMENT AUTHORITY

CHIEF ARCHITECT

NEW TOWN KOLKATA DEVELOPMENT AUTHORITY

CHIEF ARCHITECT

NEW TOWN KOLKATA DEVELOPMENT AUTHORITY

CHIEF ARCHITECT

NEW TOWN KOLKATA DEVELOPMENT AUTHORITY

CHIEF ARCHITECT

NEW TOWN KOLKATA DEVELOPMENT AUTHORITY

CHIEF ARCHITECT

NEW TOWN KOLKATA DEVELOPMENT AUTHORITY

CHIEF ARCHITECT

NEW TOWN KOLKATA DEVELOPMENT AUTHORITY

CHIEF ARCHITECT

NEW TOWN KOLKATA DEVELOPMENT AUTHORITY

CHIEF ARCHITECT