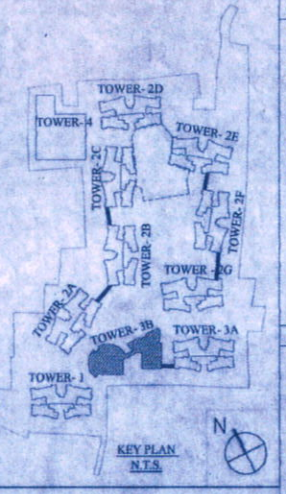


SECTION-P-P

NAME OF OWNER	NAME OF THE COMPANY
1. M/s. Adva Real Estates Private Limited	46. M/s. Gajmukhi Projects Private Limited
2. M/s. Alkshan Supply Private Limited	47. M/s. Gajmukhi Real Estate Private Limited
3. M/s. Anchor Vanija Private Limited	48. M/s. Ganesh Tracom Private Limited
4. M/s. Antrama Advisory Private Limited	49. M/s. Ganeshwani Promoters Private Limited
5. M/s. Antrama Dealers Private Limited	50. M/s. Ganeshtop Nirman Private Limited
6. M/s. Anukaran Supply Private Limited	51. M/s. Guidance Vyapaar Private Limited
7. M/s. Aravali Hirse Private Limited	52. M/s. Gulmang Vyapaar Private Limited
8. M/s. Arch Vanija Private Limited	53. M/s. Hanurang Tie Up Private Limited
9. M/s. Arpana Consultancy Private Limited	54. M/s. Indiar Tracom Private Limited
10. M/s. Arpana Tie Up Private Limited	55. M/s. Jainendra Distributors Private Limited
11. M/s. Artline Homes Private Limited	56. M/s. Jainendra Marketing Private Limited
12. M/s. Artline Projects Private Limited	57. M/s. Jainendra Merchants Private Limited
13. M/s. Artline Real Estate Private Limited	58. M/s. Jaldham Advisory Private Limited
14. M/s. Average Complex Private Limited	59. M/s. Jaldham Tie Up Private Limited
15. M/s. Average Housing Private Limited	60. M/s. Jhilmil Sales Private Limited
16. M/s. Average Infracon Private Limited	61. M/s. Jhilmil Vyapaar Private Limited
17. M/s. Average Nirman Private Limited	62. M/s. Jinay Merchants Private Limited
18. M/s. Average Projects Private Limited	63. M/s. Juhl Marketing Private Limited
19. M/s. Basudev Enclave Private Limited	64. M/s. Kalakriti Enclave Private Limited
20. M/s. Basudev Housing Private Limited	65. M/s. Kalakriti Homes Private Limited
21. M/s. Bluebird Tie Up Private Limited	66. M/s. Kalakriti Housing Private Limited
22. M/s. Booster Heights Private Limited	67. M/s. Kalakriti Properties Private Limited
23. M/s. Booster Hirse Private Limited	68. M/s. Kalakriti Realty Private Limited
24. M/s. Brihmati Agents Private Limited	69. M/s. Kamayali Consultants Private Limited
25. M/s. Brihmati Tie Up Private Limited	70. M/s. Lifelong Enclave Private Limited
26. M/s. Citywings Vyapaar Private Limited	71. M/s. Limelight Hirse Private Limited
27. M/s. Crossway Heights Private Limited	72. M/s. Linkrose Constructions Private Limited
28. M/s. Crossway Nirman Private Limited	73. M/s. Linkrose Housing Private Limited
29. M/s. Dayaidi Suppliers Private Limited	74. M/s. Linkrose Residency Private Limited
30. M/s. Delta Vyapaar Private Limited	75. M/s. Manobal Dealer Private Limited
31. M/s. Dhangaaga Hirse Private Limited	76. M/s. Manobal Vanija Private Limited
32. M/s. Dhangaaga Infracon Private Limited	77. M/s. Matrix Sales Private Limited
33. M/s. Dhangaaga Realty Private Limited	78. M/s. Maxflow Barter Private Limited
34. M/s. Dhangaaga Residency Private Limited	79. M/s. Moonlife Constructions Private Limited
35. M/s. Dreamland Hirse Private Limited	80. M/s. Moonlife Residency Private Limited
36. M/s. Elegant Nirman Private Limited	81. M/s. Moonlife Residency Private Limited
37. M/s. Gajbadan Vinimay Private Limited	82. M/s. Mridul Advisory Private Limited
38. M/s. Gajgamiini Builders Private Limited	83. M/s. Newwave Merchants Private Limited
39. M/s. Gajgamiini Constructions Private Limited	84. M/s. Original Realty Private Limited
40. M/s. Gajgamiini Hirse Private Limited	85. M/s. Penghat Supply Private Limited
41. M/s. Gajgamiini Realty Private Limited	86. M/s. Pawanputra Barter Private Limited
42. M/s. Gajmukhi Enclave Private Limited	87. M/s. Pawanputra Sales Private Limited
43. M/s. Gajmukhi Homes Private Limited	88. M/s. Prabhakar Barter Private Limited
44. M/s. Gajmukhi Infracon Private Limited	89. M/s. Prajapati Commercial Private Limited
45. M/s. Gajmukhi Nirman Private Limited	90. M/s. Prajapati Dealer Private Limited
	91. M/s. Premsgar Advisory Private Limited
	92. M/s. Premsgar Tie Up Private Limited
	93. M/s. Prime Rose Marketing Private Limited
	94. M/s. Radial Housing Private Limited
	95. M/s. Radial Residency Private Limited
	96. M/s. Rimhim Commodities Private Limited
	97. M/s. Rosemary Distributors Private Limited
	98. M/s. Rosemary Tie Up Private Limited
	99. M/s. Sadabhar Vyapaar Private Limited
	100. M/s. Sagan Advisory Services Private Limited
	101. M/s. Sarjivani Vanija Private Limited
	102. M/s. Sargam Vyapaar Private Limited
	103. M/s. Sawang Vanija Private Limited
	104. M/s. Shivasathal Dealers Private Limited
	105. M/s. Shivasathal Sales Private Limited
	106. M/s. Siddha Style Barter Private Limited
	107. M/s. Sidhant Suppliers Private Limited
	108. M/s. Silverline Vinimay Private Limited
	109. M/s. Skylark Merchants Private Limited
	110. M/s. Spandan Suppliers Private Limited
	111. M/s. Splendor Vyapaar Private Limited
	112. M/s. Style Merchants Private Limited
	113. M/s. Sukhiti Vyapaar Private Limited
	114. M/s. Summit Vyapaar Private Limited
	115. M/s. Sunshine Barter Private Limited
	116. M/s. Superior Complex Private Limited
	117. M/s. Superior Hirse Private Limited
	118. M/s. Sundhri Advisory Private Limited
	119. M/s. Sunarita Advisory Services Private Limited
	120. M/s. Sunarita Consultants Private Limited
	121. M/s. Swastik Barter Private Limited
	122. M/s. Terapanth Consultancy Services Private Limited
	123. M/s. Timeless Real Estate Private Limited
	124. M/s. Topnotch Vyapaar Private Limited
	125. M/s. Vidhata Advisory Services Private Limited

Subir
Authorized Signatory

SIGNATURE OF OWNER



CERTIFICATE OF STRUCTURAL ENGINEER
 CERTIFY THAT THE STRUCTURAL DRAWING AND DESIGN OF BOTH THE FOUNDATION AND SUPERSTRUCTURE OF THE BUILDING / BUILDINGS HAS BEEN MADE CONSIDERING THE SOIL TEST REPORT, AS PER THE RULES AND REGULATIONS MADE UNDER THE ACT AND ALSO, CONSIDERING ALL POSSIBLE LOADS, SEISMIC LOAD AND THE MOMENTS GENERATED BY THE PROPOSED STRUCTURE AS PER THE BUREAU OF INDIAN STANDARD AND NATIONAL BUILDING CODE OF INDIA AND CERTIFIED THAT IT IS SAFE AND STABLE IN ALL RESPECT AND THESE PROVISIONS SHALL BE ADHERED TO DURING THE CONSTRUCTION.

SANJIV J. PAREKH
 M.P. IN STRUCTURAL ENGINEERING
 H.C. E. REG. (F-101302-11)
 STRV/NKDA/10/0003

SIGNATURE OF STRUCTURAL ENGINEER

CERTIFICATE OF ARCHITECT

I CERTIFY THAT ALL THE ARCHITECTURAL DRAWINGS OF THE PROJECT AT R.S.DAG NOS.473,474, 475,476,477,478,479,480,481,482,483, 484, 485, 486, 491, 492,493, 494, 495, 496, 497, 499, 500, 501(P), 502(P), 503(P), 504(P), 506(P), 507(P), 509(P), 509(P), 511, 512, 513, 514, 515, 516, 517, 518, 519, 520, 521, 522, 523, 524, 525, 526, 527, 528, 529, 530, 531, 532, 533, 534, 535, 536, 537, 538, 539, 540, 541, 542, 543, 544, 545, 546, 547, 548, 549, 550, 551, 552, 553, 554, 555, 556, 557, 558, 559, 560, 561, 562, 563, 564, 565, 566, 567, 568, 569, 570, 571, 572, 573, 574, 575, 576, 577, 578, 579, 580, 581, 582, 583, 584, 585, 586, 587, 588, 589, 590, 591, 592, 593, 594, 595, 596, 597, 598, 599, 600, 601, 602, 603, 604, 605, 606, 607, 608, 609, 610, 611, 612, 613, 614, 615, 616, 617, 618, 619, 620, 621, 622, 623, 624, 625, 626, 627, 628, 629, 630, 631, 632, 633, 634, 635, 636, 637, 638, 639, 640, 641, 642, 643, 644, 645, 646, 647, 648, 649, 650, 651, 652, 653, 654, 655, 656, 657, 658, 659, 660, 661, 662, 663, 664, 665, 666, 667, 668, 669, 670, 671, 672, 673, 674, 675, 676, 677, 678, 679, 680, 681, 682, 683, 684, 685, 686, 687, 688, 689, 690, 691, 692, 693, 694, 695, 696, 697, 698, 699, 700, 701, 702, 703, 704, 705, 706, 707, 708, 709, 710, 711, 712, 713, 714, 715, 716, 717, 718, 719, 720, 721, 722, 723, 724, 725, 726, 727, 728, 729, 730, 731, 732, 733, 734, 735, 736, 737, 738, 739, 740, 741, 742, 743, 744, 745, 746, 747, 748, 749, 750, 751, 752, 753, 754, 755, 756, 757, 758, 759, 760, 761, 762, 763, 764, 765, 766, 767, 768, 769, 770, 771, 772, 773, 774, 775, 776, 777, 778, 779, 780, 781, 782, 783, 784, 785, 786, 787, 788, 789, 790, 791, 792, 793, 794, 795, 796, 797, 798, 799, 800, 801, 802, 803, 804, 805, 806, 807, 808, 809, 810, 811, 812, 813, 814, 815, 816, 817, 818, 819, 820, 821, 822, 823, 824, 825, 826, 827, 828, 829, 830, 831, 832, 833, 834, 835, 836, 837, 838, 839, 840, 841, 842, 843, 844, 845, 846, 847, 848, 849, 850, 851, 852, 853, 854, 855, 856, 857, 858, 859, 860, 861, 862, 863, 864, 865, 866, 867, 868, 869, 870, 871, 872, 873, 874, 875, 876, 877, 878, 879, 880, 881, 882, 883, 884, 885, 886, 887, 888, 889, 890, 891, 892, 893, 894, 895, 896, 897, 898, 899, 900, 901, 902, 903, 904, 905, 906, 907, 908, 909, 910, 911, 912, 913, 914, 915, 916, 917, 918, 919, 920, 921, 922, 923, 924, 925, 926, 927, 928, 929, 930, 931, 932, 933, 934, 935, 936, 937, 938, 939, 940, 941, 942, 943, 944, 945, 946, 947, 948, 949, 950, 951, 952, 953, 954, 955, 956, 957, 958, 959, 960, 961, 962, 963, 964, 965, 966, 967, 968, 969, 970, 971, 972, 973, 974, 975, 976, 977, 978, 979, 980, 981, 982, 983, 984, 985, 986, 987, 988, 989, 990, 991, 992, 993, 994, 995, 996, 997, 998, 999, 1000.

M. Agrawal

NONAL AGROWAL
 Regd. Architect
 New Town Kolkata Development Authority
 Enrollment No. AC/000424/000010

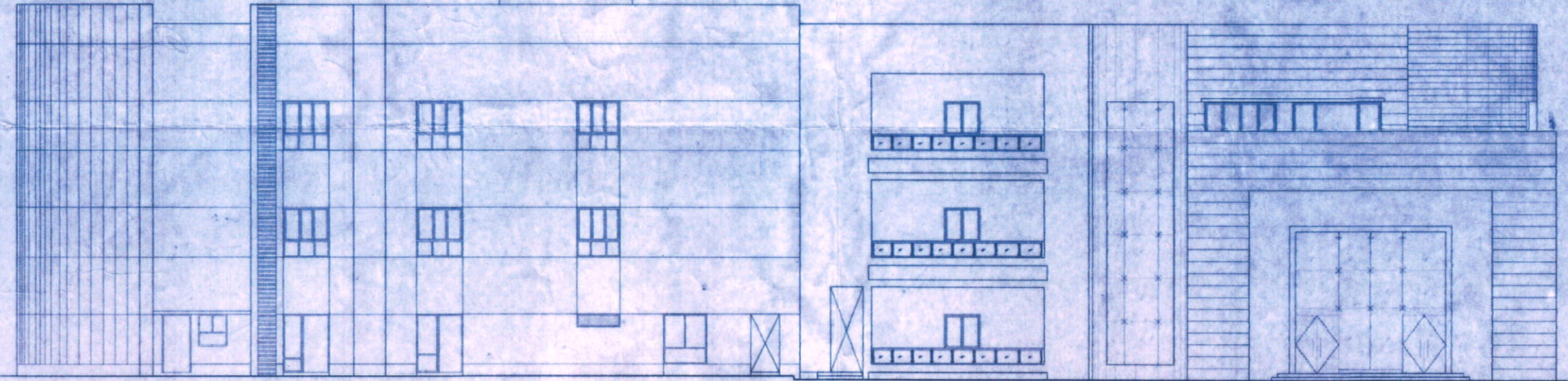
SIGNATURE OF ARCHITECT

CERTIFICATE OF GEO- TECHNICAL ENGINEER

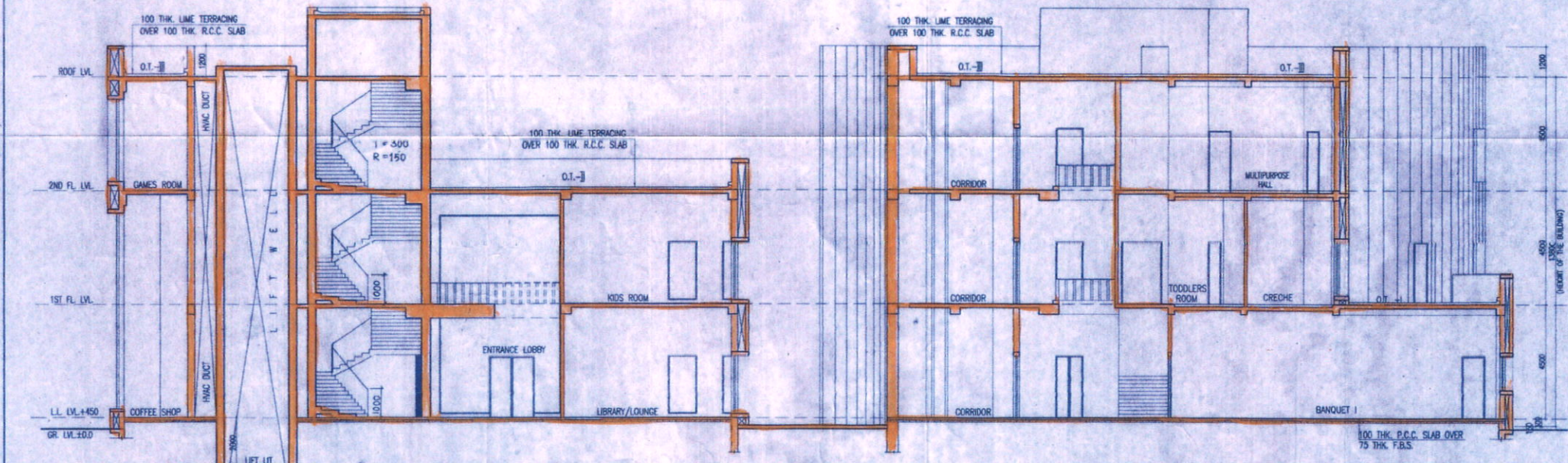
IT IS CERTIFIED THAT THE COMPREHENSIVE GEO-TECHNICAL REPORT ON SOIL INVESTIGATION HAS BEEN PREPARED BY ME FOR DESIGN AND CALCULATION OF THE FOUNDATION BY ANALYZING THE SOIL SAMPLES FOR ESTIMATING THE BEARING CAPACITY OF THE SOIL ON WHICH FOUNDATION OF THE STRUCTURE WILL BE CONSTRUCTED. I SHALL ALSO CHECK THE NATURE OF THE SOIL AFTER EXCAVATION AT SITE SO THAT FOUNDATION IS EXTENDED UP TO THE APPROPRIATE DEPTH THAT HAS BEEN PROPOSED IN THE GEO-TECHNICAL REPORT.

SUBIRANJAN GARKAR
 SUBIRANJAN GARKAR
 Regd. Town Planner
 New Town Kolkata Development Authority
 Enrollment No.: TPER/NKDA/10/00036

SIGNATURE OF GEO- TECHNICAL ENGINEER



FRONT ELEVATION



SECTION-N-N

SIGNATURE OF TOWN PLANNER OR URBAN DESIGNER

SANJIB GHATA
 SANJIB GHATA
 BSC, BCE, FIE (F-115654-5)
 CHARTERED ENGINEER
 STRV/NKDA/15/00023

SIGNATURE OF STRUCTURAL REVIEWER

TITLE: FRONT ELEVATION SECTION-P-P & N-N (TOWER-1B)

PROJECT: REVISED (G+1), (B+G-VI) AND (G+XIX) STORED RESIDENTIAL BUILDINGS AT MOUZA - BHATENDA, R.S.DAG NOS.473, 474, 475, 476, 477, 478, 479, 480, 481, 482, 483, 484, 485, 486, 491, 492, 493, 494, 495, 496, 497, 499, 500, 501(P), 502(P), 503(P), 504(P), 506(P), 507(P), 509(P), 509(P), 511, 512, 513, 514, 515, 516, 517, 518, 519, 520, 521, 522, 523, 524, 525, 526, 527, 528, 529, 530, 531, 532, 533, 534, 535, 536, 537, 538, 539, 540, 541, 542, 543, 544, 545, 546, 547, 548, 549, 550, 551, 552, 553, 554, 555, 556, 557, 558, 559, 560, 561, 562, 563, 564, 565, 566, 567, 568, 569, 570, 571, 572, 573, 574, 575, 576, 577, 578, 579, 580, 581, 582, 583, 584, 585, 586, 587, 588, 589, 590, 591, 592, 593, 594, 595, 596, 597, 598, 599, 600, 601, 602, 603, 604, 605, 606, 607, 608, 609, 610, 611, 612, 613, 614, 615, 616, 617, 618, 619, 620, 621, 622, 623, 624, 625, 626, 627, 628, 629, 630, 631, 632, 633, 634, 635, 636, 637, 638, 639, 640, 641, 642, 643, 644, 645, 646, 647, 648, 649, 650, 651, 652, 653, 654, 655, 656, 657, 658, 659, 660, 661, 662, 663, 664, 665, 666, 667, 668, 669, 670, 671, 672, 673, 674, 675, 676, 677, 678, 679, 680, 681, 682, 683, 684, 685, 686, 687, 688, 689, 690, 691, 692, 693, 694, 695, 696, 697, 698, 699, 700, 701, 702, 703, 704, 705, 706, 707, 708, 709, 710, 711, 712, 713, 714, 715, 716, 717, 718, 719, 720, 721, 722, 723, 724, 725, 726, 727, 728, 729, 730, 731, 732, 733, 734, 735, 736, 737, 738, 739, 740, 741, 742, 743, 744, 745, 746, 747, 748, 749, 750, 751, 752, 753, 754, 755, 756, 757, 758, 759, 760, 761, 762, 763, 764, 765, 766, 767, 768, 769, 770, 771, 772, 773, 774, 775, 776, 777, 778, 779, 780, 781, 782, 783, 784, 785, 786, 787, 788, 789, 790, 791, 792, 793, 794, 795, 796, 797, 798, 799, 800, 801, 802, 803, 804, 805, 806, 807, 808, 809, 810, 811, 812, 813, 814, 815, 816, 817, 818, 819, 820, 821, 822, 823, 824, 825, 826, 827, 828, 829, 830, 831, 832, 833, 834, 835, 836, 837, 838, 839, 840, 841, 842, 843, 844, 845, 846, 847, 848, 849, 850, 851, 852, 853, 854, 855, 856, 857, 858, 859, 860, 861, 862, 863, 864, 865, 866, 867, 868, 869, 870, 871, 872, 873, 874, 875, 876, 877, 878, 879, 880, 881, 882, 883, 884, 885, 886, 887, 888, 889, 890, 891, 892, 893, 894, 895, 896, 897, 898, 899, 900, 901, 902, 903, 904, 905, 906, 907, 908, 909, 910, 911, 912, 913, 914, 915, 916, 917, 918, 919, 920, 921, 922, 923, 924, 925, 926, 927, 928, 929, 930, 931, 932, 933, 934, 935, 936, 937, 938, 939, 940, 941, 942, 943, 944, 945, 946, 947, 948, 949, 950, 951, 952, 953, 954, 955, 956, 957, 958, 959, 960, 961, 962, 963, 964, 965, 966, 967, 968, 969, 970, 971, 972, 973, 974, 975, 976, 977, 978, 979, 980, 981, 982, 983, 984, 985, 986, 987, 988, 989, 990, 991, 992, 993, 994, 995, 996, 997, 998, 999, 1000.

ARCHITECTS				
AGRAWAL & AGRAWAL				
BARODA		KOLKATA		
SCALE	DATE	SHEET NO.	DIAET	CHECKED
1:100	06.12.16	38 OF 41	ARNAB/SUP	SRJA

REVISIONS
NO. 1
DATE: 20/07/2018
BY: [Signature]

SAUCIONED & APPROVED
New Town Kolkata Development Authority
Assistant Architect
Soumitra Majumdar
Chief Architect
New Town Kolkata Development Authority
SUKRIT CHATTERJEE
28/8/18
Executive Officer
Regional Planning Group

NEW TOWN KOLKATA DEVELOPMENT AUTHORITY
No Objection Certificate for
Submitting Building Plan for Construction Purpose
Memo No. 3522(3)/KRD&B/P-04(3)/2014
Date: 30.07.2018
Building Particulars: Proposed 4+11, (4+11), (4+11), (4+11) (4+11)
Site: 11, 12, 13, 14, 15, 16, 17, 18, 19, 20, 21, 22, 23, 24, 25, 26, 27, 28, 29, 30, 31, 32, 33, 34, 35, 36, 37, 38, 39, 40, 41, 42, 43, 44, 45, 46, 47, 48, 49, 50, 51, 52, 53, 54, 55, 56, 57, 58, 59, 60, 61, 62, 63, 64, 65, 66, 67, 68, 69, 70, 71, 72, 73, 74, 75, 76, 77, 78, 79, 80, 81, 82, 83, 84, 85, 86, 87, 88, 89, 90, 91, 92, 93, 94, 95, 96, 97, 98, 99, 100, 101, 102, 103, 104, 105, 106, 107, 108, 109, 110, 111, 112, 113, 114, 115, 116, 117, 118, 119, 120, 121, 122, 123, 124, 125, 126, 127, 128, 129, 130, 131, 132, 133, 134, 135, 136, 137, 138, 139, 140, 141, 142, 143, 144, 145, 146, 147, 148, 149, 150, 151, 152, 153, 154, 155, 156, 157, 158, 159, 160, 161, 162, 163, 164, 165, 166, 167, 168, 169, 170, 171, 172, 173, 174, 175, 176, 177, 178, 179, 180, 181, 182, 183, 184, 185, 186, 187, 188, 189, 190, 191, 192, 193, 194, 195, 196, 197, 198, 199, 200, 201, 202, 203, 204, 205, 206, 207, 208, 209, 210, 211, 212, 213, 214, 215, 216, 217, 218, 219, 220, 221, 222, 223, 224, 225, 226, 227, 228, 229, 230, 231, 232, 233, 234, 235, 236, 237, 238, 239, 240, 241, 242, 243, 244, 245, 246, 247, 248, 249, 250, 251, 252, 253, 254, 255, 256, 257, 258, 259, 260, 261, 262, 263, 264, 265, 266, 267, 268, 269, 270, 271, 272, 273, 274, 275, 276, 277, 278, 279, 280, 281, 282, 283, 284, 285, 286, 287, 288, 289, 290, 291, 292, 293, 294, 295, 296, 297, 298, 299, 300, 301, 302, 303, 304, 305, 306, 307, 308, 309, 310, 311, 312, 313, 314, 315, 316, 317, 318, 319, 320, 321, 322, 323, 324, 325, 326, 327, 328, 329, 330, 331, 332, 333, 334, 335, 336, 337, 338, 339, 340, 341, 342, 343, 344, 345, 346, 347, 348, 349, 350, 351, 352, 353, 354, 355, 356, 357, 358, 359, 360, 361, 362, 363, 364, 365, 366, 367, 368, 369, 370, 371, 372, 373, 374, 375, 376, 377, 378, 379, 380, 381, 382, 383, 384, 385, 386, 387, 388, 389, 390, 391, 392, 393, 394, 395, 396, 397, 398, 399, 400, 401, 402, 403, 404, 405, 406, 407, 408, 409, 410, 411, 412, 413, 414, 415, 416, 417, 418, 419, 420, 421, 422, 423, 424, 425, 426, 427, 428, 429, 430, 431, 432, 433, 434, 435, 436, 437, 438, 439, 440, 441, 442, 443, 444, 445, 446, 447, 448, 449, 450, 451, 452, 453, 454, 455, 456, 457, 458, 459, 460, 461, 462, 463, 464, 465, 466, 467, 468, 469, 470, 471, 472, 473, 474, 475, 476, 477, 478, 479, 480, 481, 482, 483, 484, 485, 486, 487, 488, 489, 490, 491, 492, 493, 494, 495, 496, 497, 498, 499, 500, 501, 502, 503, 504, 505, 506, 507, 508, 509, 510, 511, 512, 513, 514, 515, 516, 517, 518, 519, 520, 521, 522, 523, 524, 525, 526, 527, 528, 529, 530, 531, 532, 533, 534, 535, 536, 537, 538, 539, 540, 541, 542, 543, 544, 545, 546, 547, 548, 549, 550, 551, 552, 553, 554, 555, 556, 557, 558, 559, 560, 561, 562, 563, 564, 565, 566, 567, 568, 569, 570, 571, 572, 573, 574, 575, 576, 577, 578, 579, 580, 581, 582, 583, 584, 585, 586, 587, 588, 589, 590, 591, 592, 593, 594, 595, 596, 597, 598, 599, 600, 601, 602, 603, 604, 605, 606, 607, 608, 609, 610, 611, 612, 613, 614, 615, 616, 617, 618, 619, 620, 621, 622, 623, 624, 625, 626, 627, 628, 629, 630, 631, 632, 633, 634, 635, 636, 637, 638, 639, 640, 641, 642, 643, 644, 645, 646, 647, 648, 649, 650, 651, 652, 653, 654, 655, 656, 657, 658, 659, 660, 661, 662, 663, 664, 665, 666, 667, 668, 669, 670, 671, 672, 673, 674, 675, 676, 677, 678, 679, 680, 681, 682, 683, 684, 685, 686, 687, 688, 689, 690, 691, 692, 693, 694, 695, 696, 697, 698, 699, 700, 701, 702, 703, 704, 705, 706, 707, 708, 709, 710, 711, 712, 713, 714, 715, 716, 717, 718, 719, 720, 721, 722, 723, 724, 725, 726, 727, 728, 729, 730, 731, 732, 733, 734, 735, 736, 737, 738, 739, 740, 741, 742, 743, 744, 745, 746, 747, 748, 749, 750, 751, 752, 753, 754, 755, 756, 757, 758, 759, 760, 761, 762, 763, 764, 765, 766, 767, 768, 769, 770, 771, 772, 773, 774, 775, 776, 777, 778, 779, 780, 781, 782, 783, 784, 785, 786, 787, 788, 789, 790, 791, 792, 793, 794, 795, 796, 797, 798, 799, 800, 801, 802, 803, 804, 805, 806, 807, 808, 809, 810, 811, 812, 813, 814, 815, 816, 817, 818, 819, 820, 821, 822, 823, 824, 825, 826, 827, 828, 829, 830, 831, 832, 833, 834, 835, 836, 837, 838, 839, 840, 841, 842, 843, 844, 845, 846, 847, 848, 849, 850, 851, 852, 853, 854, 855, 856, 857, 858, 859, 860, 861, 862, 863, 864, 865, 866, 867, 868, 869, 870, 871, 872, 873, 874, 875, 876, 877, 878, 879, 880, 881, 882, 883, 884, 885, 886, 887, 888, 889, 890, 891, 892, 893, 894, 895, 896, 897, 898, 899, 900, 901, 902, 903, 904, 905, 906, 907, 908, 909, 910, 911, 912, 913, 914, 915, 916, 917, 918, 919, 920, 921, 922, 923, 924, 925, 926, 927, 928, 929, 930, 931, 932, 933, 934, 935, 936, 937, 938, 939, 940, 941, 942, 943, 944, 945, 946, 947, 948, 949, 950, 951, 952, 953, 954, 955, 956, 957, 958, 959, 960, 961, 962, 963, 964, 965, 966, 967, 968, 969, 970, 971, 972, 973, 974, 975, 976, 977, 978, 979, 980, 981, 982, 983, 984, 985, 986, 987, 988, 989, 990, 991, 992, 993, 994, 995, 996, 997, 998, 999, 1000

REGISTERED ARCHITECT: MONU AGRAWAL Enrolment No. NCTE/NKDB/10/0020
CITY/STRUCTURAL ENGINEER: SHUBU JAYARAJ Enrolment No. STER/NKDB/10/0030
020-TECHNICAL ENGINEER: SHYAMAL K MITRA Enrolment No. GTE-THD/09/0010
TOWN PLANNER/URBAN DESIGNER: SUBIR KISHAN SARKAR Enrolment No. TPER/NKDB/10/0036
STRUCTURAL REVIEWER: SANDIP GUPTA Enrolment No. STRV/NKDB/10/0013
Notes: This NCC has been issued on the basis of
Documents submitted by the applicant in accordance with the
Act, Enactment Order, Rules & Regulations of the Authority
and any other regulations of law in connection with the
above project including the concerned laws, plans, drawings,
design etc., and the NCC and used cases.

38/41