

SCHEDULE OF DOORS & WINDOWS

NO	SILL	LINTEL	SIZE
D	-	2150	1200 X 2150
D1	-	2150	900 X 2150
D1a	250	2300	900 X 2050
D2	-	2150	750 X 2150
D2a	-	2150	700 X 2150
D3	-	2150	1000 X 2150
DW	-	2400	2985 X 2400
DW1	-	2400	2345 X 2400
SD	-	2150	2100 X 2150
SD1	-	2150	1600 X 2150
F.G.D	-	2150	1125 X 2150
F.C.D1	-	2150	1108 X 2150
W	350	2150	2400 X 1800
W1	350	2150	2100 X 1800
W2	350	2150	1200 X 1800
W3	350	2150	850 X 1800
W4	1150	2150	1200 X 1050
W5	1250	2150	600 X 900
W6	350	2150	1200 X 1800
W7	750	2150	700 X 1400
SW	750	2450	1198 X 1700

CERTIFICATE OF STRUCTURAL ENGINEER
 CERTIFY THAT THE STRUCTURAL DRAWING AND DESIGN OF BOTH THE FOUNDATION AND SUPERSTRUCTURE OF THE BUILDING / BUILDINGS HAS BEEN MADE CONSIDERING THE SOIL TEST REPORT, AS PER THE RULES AND REGULATIONS MADE UNDER THE ACT AND ALSO CONSIDERING ALL POSSIBLE LOADS, SEISMIC LOAD AND THE MOMENTS GENERATED BY THE PROPOSED STRUCTURE AS PER THE BUREAU OF INDIAN STANDARD AND NATIONAL BUILDING CODE OF INDIA AND CERTIFIED THAT IT IS SAFE AND STABLE IN ALL RESPECT AND THESE PROVISIONS SHALL BE ADHERED TO DURING THE CONSTRUCTION.

NAME OF OWNER
 NAME OF THE COMPANY

SANJIV J. PAREKH
 M.E. (STRUCTURAL), CONST. ENCL.
 N. C. E. I. E. (18-102-3)
 NER/NKDA/18/00930

SIGNATURE OF STRUCTURAL ENGG.

CERTIFICATE OF ARCHITECT
 I CERTIFY THAT ALL THE ARCHITECTURAL DRAWINGS OF THE PROJECT AT R.S.DAG NOS.473,474, 475,476,477,478,479,480, 481,482,483, 484, 485, 491, 492,493, 494, 495, 496, 497, 499, 500, 501P, 502P, 503 P, 504P, 506P, 507P, 508P, 520P, 521, 522, 523 & 524 (P), OF MOUZA - BHATENDA, J.L. NO.28 HAVE BEEN PREPARED BY ME COMPLYING WITH THE NEW TOWN KOLKATA PLANNING AREA (URB.DRNG) RULES, 2014. I ALSO CERTIFY THAT THE PLANS AND DRAWINGS PREPARED BY ME COMPLYING WITH ALL THE PROVISIONS REGARDING THE FIRE PROTECTION AS PER THE PREVAILING NATIONAL BUILDING CODE OF INDIA SHALL BE HELD RESPONSIBLE IF ANY INCORRECT INFORMATION IS FURNISHED BY ME OR ANY VIOLATION OF PROVISIONS OF THESE RULES OR THE PREVAILING NATIONAL BUILDING CODE IS FOUND IN ANY OF THE DRAWINGS AND DOCUMENTS, SIGNED BY ME AND SUBMITTED TO THE SANCTIONING AUTHORITY FOR CONSIDERING SANCTION.

MONAL AGRAWAL
 Regd. Architect
 New Town Kolkata Development Authority
 Enrollment No. AC/08/004/10/00118

SIGNATURE OF ARCHITECT

CERTIFICATE OF GEO - TECHNICAL ENGINEER
 IT IS CERTIFIED THAT THE COMPREHENSIVE GEO-TECHNICAL REPORT ON SOIL INVESTIGATION HAS BEEN PREPARED BY ME FOR DESIGN AND CALCULATION OF THE FOUNDATION BY ANALYZING THE SOIL SAMPLES FOR ESTIMATING THE BEARING CAPACITY OF THE SOIL ON WHICH FOUNDATION OF THE STRUCTURE WILL BE CONSTRUCTED. I SHALL ALSO CHECK THE NATURE OF THE SOIL AFTER EXCAVATION AT SITE SO THAT FOUNDATION IS EXTENDED UP TO THE APPROPRIATE DEPTH THAT HAS BEEN PROPOSED IN THE GEO-TECHNICAL REPORT.

Subir Ranjan Sarkar
 Regd. Town Planner
 New Town Kolkata Development Authority
 Enrollment No.: TPER/NKDA/10/00930

SIGNATURE OF GEO - TECHNICAL ENGINEER

SIGNATURE OF TOWN PLANNER OR URBAN DESIGNER

SANJIB GUHA
 BSC, BCE, FIE (F-115654-3)
 CHARTERED ENGINEER
 STR/VNKA/15/00003

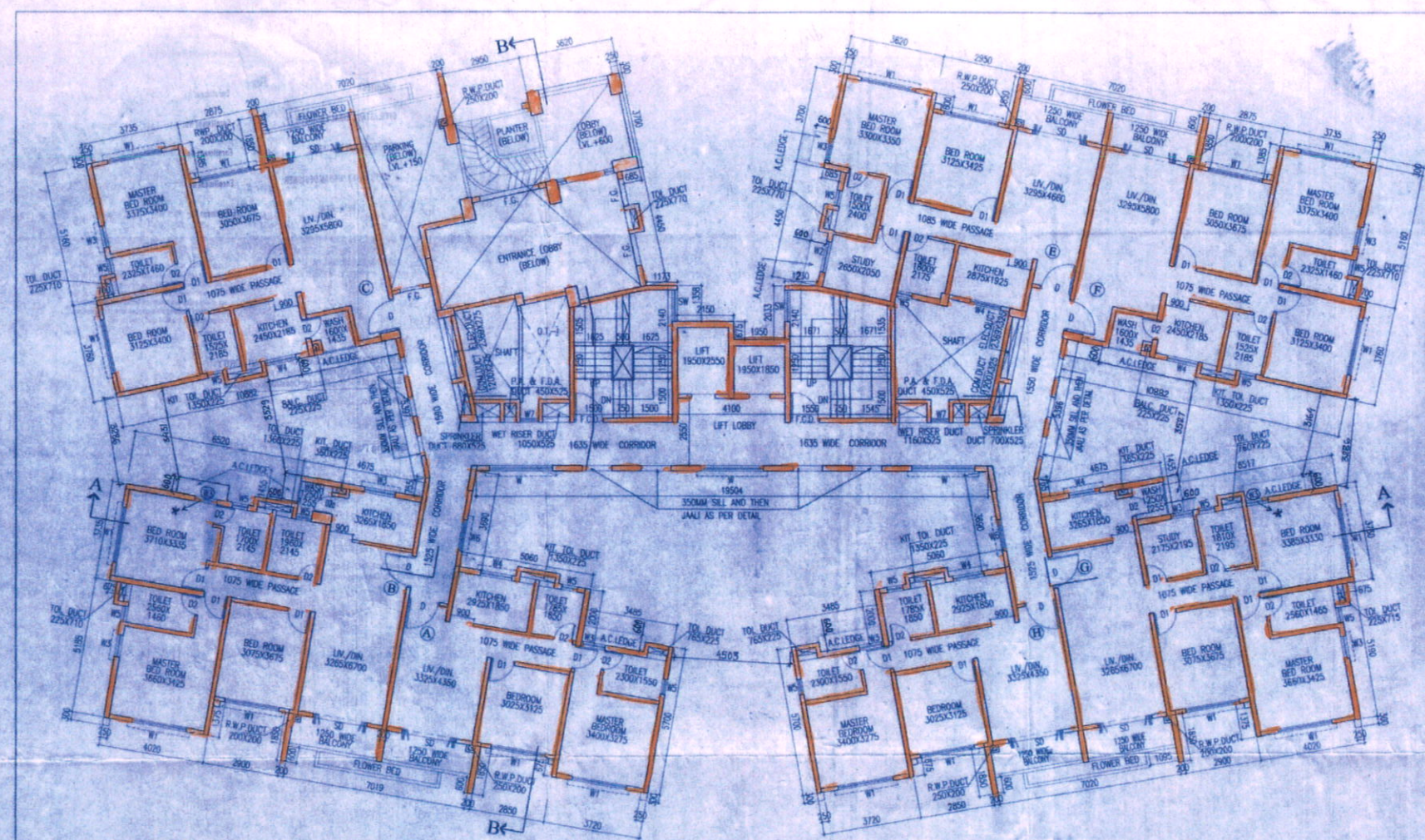
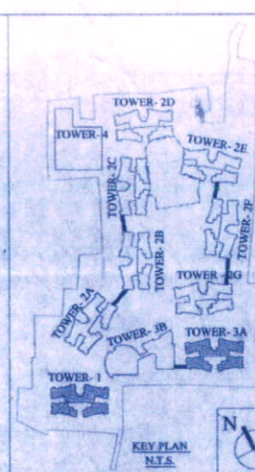
SIGNATURE OF STRUCTURAL REVIEWER

TITLE
 GROUND & FIRST FLOOR PLAN (TOWER - 1)
 (TOWER-3A IS GARLAP)

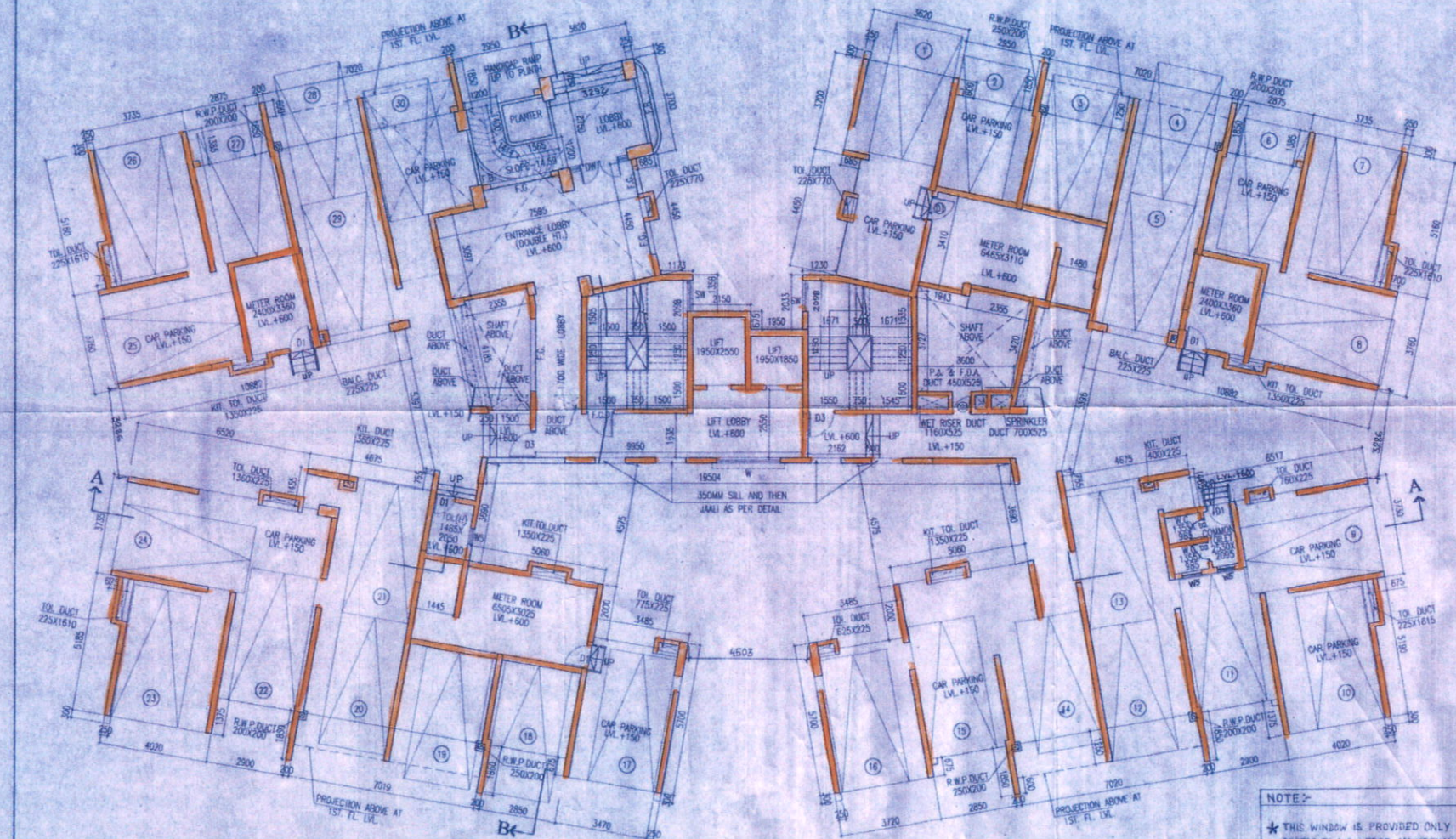
PROJECT
 REVISED (G+1, (B+G+VII) AND (G+XIX) STORED RESIDENTIAL BUILDINGS AT MOUZA - BHATENDA, R.S.DAG NOS. 473, 474, 475, 476, 477, 478, 479, 480, 481(P), 483, 489, 490, 491, 492, 493, 494, 495, 496, 497, 499, 500, 501P, 502P, 503P, 504P, 506P, 507P, 508P, 520P, 521, 522, 523 & 524 (P), OF MOUZA - BHATENDA, J.L. NO.28, P.S. - RAJARHAT, WITHIN THE JURISDICTION OF RAJARHAT SUBDIVISION NO. 1 GRAM PANCHAYAT, DIST. NORTH 24 PARGANAS, PREVIOUSLY SANCTIONED AND APPROVED BY EXECUTIVE OFFICER OF RAJARHAT PANCHAYAT SAMITY, DATED 15/12/15

AGRAWAL & AGRAWAL

SCALE	DATE	SHEET NO	DEALT	CHECKED
1:100	08.12.16	4 OF 41	SDUP	SHLA



FIRST FLOOR PLAN



GROUND FLOOR PLAN

NOTE:-
 * THIS WINDOW IS PROVIDED ONLY FOR ACCESS TO A.C. LEDGE MAINTENANCE OF A.C.

Authorized Signatory
 SIGNATURE OF OWNER

STANDARD OF WORKS
SECTION 05100 - PAINTS AND COATINGS
PART 1 - GENERAL
1.01 SUMMARY
A. Section Includes
1. Exterior and interior wall and ceiling
2. Exterior and interior woodwork
3. Exterior and interior metalwork
4. Exterior and interior masonry
5. Exterior and interior concrete
6. Exterior and interior steelwork
7. Exterior and interior glass and glazing
8. Exterior and interior aluminum
9. Exterior and interior copper
10. Exterior and interior stainless steel
11. Exterior and interior zinc
12. Exterior and interior lead
13. Exterior and interior asbestos
14. Exterior and interior asbestos abatement
15. Exterior and interior asbestos encapsulation
16. Exterior and interior asbestos removal
17. Exterior and interior asbestos disposal
18. Exterior and interior asbestos monitoring
19. Exterior and interior asbestos testing
20. Exterior and interior asbestos air monitoring
21. Exterior and interior asbestos surface monitoring
22. Exterior and interior asbestos soil monitoring
23. Exterior and interior asbestos groundwater monitoring
24. Exterior and interior asbestos leachate monitoring
25. Exterior and interior asbestos dust monitoring
26. Exterior and interior asbestos fiber monitoring
27. Exterior and interior asbestos bioassay
28. Exterior and interior asbestos cytotoxicity
29. Exterior and interior asbestos genotoxicity
30. Exterior and interior asbestos carcinogenicity
31. Exterior and interior asbestos mutagenicity
32. Exterior and interior asbestos reproductive toxicity
33. Exterior and interior asbestos developmental toxicity
34. Exterior and interior asbestos neurotoxicity
35. Exterior and interior asbestos immunotoxicity
36. Exterior and interior asbestos hepatotoxicity
37. Exterior and interior asbestos nephrotoxicity
38. Exterior and interior asbestos cardiotoxicity
39. Exterior and interior asbestos hematotoxicity
40. Exterior and interior asbestos immunotoxicity
41. Exterior and interior asbestos immunotoxicity
42. Exterior and interior asbestos immunotoxicity
43. Exterior and interior asbestos immunotoxicity
44. Exterior and interior asbestos immunotoxicity
45. Exterior and interior asbestos immunotoxicity
46. Exterior and interior asbestos immunotoxicity
47. Exterior and interior asbestos immunotoxicity
48. Exterior and interior asbestos immunotoxicity
49. Exterior and interior asbestos immunotoxicity
50. Exterior and interior asbestos immunotoxicity
51. Exterior and interior asbestos immunotoxicity
52. Exterior and interior asbestos immunotoxicity
53. Exterior and interior asbestos immunotoxicity
54. Exterior and interior asbestos immunotoxicity
55. Exterior and interior asbestos immunotoxicity
56. Exterior and interior asbestos immunotoxicity
57. Exterior and interior asbestos immunotoxicity
58. Exterior and interior asbestos immunotoxicity
59. Exterior and interior asbestos immunotoxicity
60. Exterior and interior asbestos immunotoxicity
61. Exterior and interior asbestos immunotoxicity
62. Exterior and interior asbestos immunotoxicity
63. Exterior and interior asbestos immunotoxicity
64. Exterior and interior asbestos immunotoxicity
65. Exterior and interior asbestos immunotoxicity
66. Exterior and interior asbestos immunotoxicity
67. Exterior and interior asbestos immunotoxicity
68. Exterior and interior asbestos immunotoxicity
69. Exterior and interior asbestos immunotoxicity
70. Exterior and interior asbestos immunotoxicity
71. Exterior and interior asbestos immunotoxicity
72. Exterior and interior asbestos immunotoxicity
73. Exterior and interior asbestos immunotoxicity
74. Exterior and interior asbestos immunotoxicity
75. Exterior and interior asbestos immunotoxicity
76. Exterior and interior asbestos immunotoxicity
77. Exterior and interior asbestos immunotoxicity
78. Exterior and interior asbestos immunotoxicity
79. Exterior and interior asbestos immunotoxicity
80. Exterior and interior asbestos immunotoxicity
81. Exterior and interior asbestos immunotoxicity
82. Exterior and interior asbestos immunotoxicity
83. Exterior and interior asbestos immunotoxicity
84. Exterior and interior asbestos immunotoxicity
85. Exterior and interior asbestos immunotoxicity
86. Exterior and interior asbestos immunotoxicity
87. Exterior and interior asbestos immunotoxicity
88. Exterior and interior asbestos immunotoxicity
89. Exterior and interior asbestos immunotoxicity
90. Exterior and interior asbestos immunotoxicity
91. Exterior and interior asbestos immunotoxicity
92. Exterior and interior asbestos immunotoxicity
93. Exterior and interior asbestos immunotoxicity
94. Exterior and interior asbestos immunotoxicity
95. Exterior and interior asbestos immunotoxicity
96. Exterior and interior asbestos immunotoxicity
97. Exterior and interior asbestos immunotoxicity
98. Exterior and interior asbestos immunotoxicity
99. Exterior and interior asbestos immunotoxicity
100. Exterior and interior asbestos immunotoxicity

2018

02/18

SACTIONED & APPROVED

New Town Kolkata Development Authority
Chief Architect
SUNJIT CHATTERJEE
S. Chatterjee

Note: The proposal is recommended for approval, subject to submission of Government clearance.
Building Particulars Proposed: mixed (G+11), (G+G+V11) (G+K11) Street Residential Building at Block-28, P-5, Sector-28, Locality-24, figs.

Date: 20.07.2018
Memo No. 2622(3)/NTP/25-04(3)/2014
Section of Building Plan for Conversion Purpose
No Objection Certificate for
NEW TOWN KOLKATA DEVELOPMENT AUTHORITY

FOR RECORDS ONLY.
DESIGN CALCULATIONS & SOIL TEST REPORT ARE NOT CHECKED AND NOT RECOMMENDED BY THE AUTHORITY.
Note: The NCC has been issued on the basis of documents submitted by the applicant and provided the applicant has not made any change in the design, plan, floor, etc. and the NCC shall remain valid.

- ARCHITECT: POBEC Architects. Evaluation No: AC18R/NKD/10/0022
- CIVIL/STRUCTURAL ENGINEER: SHANU J. PRERAKH. Evaluation No: STBR/NKD/10/0030
- MECHANICAL ENGINEER: SHANU J. PRERAKH. Evaluation No: MTER/NKD/10/0010
- TOWN PLANNING/URBAN DESIGNER: SHANU J. PRERAKH. Evaluation No: TPER/NKD/10/0030
- INTERNAL REVIEWER: SHANU J. PRERAKH. Evaluation No: STRV/NKD/15/00013