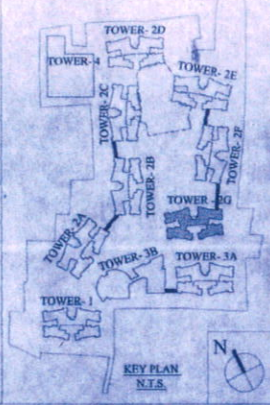


SCHEDULE OF DOORS & WINDOWS

NO.	SILL	LINTEL	SIZE
D	-	2150	1200 X 2150
D1	-	2150	900 X 2150
D1a	250	2300	900 X 2050
D2	-	2150	750 X 2150
D2a	-	2150	700 X 2150
D3	-	2150	1000 X 2150
DW	-	2400	2385 X 2400
DW1	-	2400	2345 X 2400
SD	-	2150	2100 X 2150
SD1	-	2150	1500 X 2150
F.C.D	-	2150	1125 X 2150
F.C.D1	-	2150	1125 X 2150
W	350	2150	2400 X 1450
W1	350	2150	2100 X 1450
W2	350	2150	1200 X 1300
W3	350	2150	850 X 1300
W4	1100	2150	1200 X 1050
W5	1250	2150	800 X 900
W6	350	2150	1200 X 1400
W7	750	2150	700 X 1400
SW	750	2450	1150 X 1700



CERTIFICATE OF STRUCTURAL ENGINEER
 CERTIFY THAT THE STRUCTURAL DRAWING AND DESIGN OF BOTH THE FOUNDATION AND SUPERSTRUCTURE OF THE BUILDING / BUILDINGS HAS BEEN MADE CONSIDERING THE SOIL TEST REPORT, AS PER THE RULES AND REGULATIONS MADE UNDER THE ACT AND ALSO CONSIDERING ALL POSSIBLE LOADS, SEISMIC LOAD AND THE MOMENTS GENERATED BY THE PROPOSED STRUCTURE AS PER THE BUREAU OF INDIAN STANDARD AND NATIONAL BUILDING CODE OF INDIA AND CERTIFIED THAT IT IS SAFE AND STABLE IN ALL RESPECT AND THESE PROVISIONS SHALL BE ADHERED TO DURING THE CONSTRUCTION.

SANJIV J. PARIKH
 M.STRUCTURAL ENGINEER
 E.C.E., F.C.E. (RAJASTHAN)
 STR/NKA/D/16/00031

SIGNATURE OF STRUCTURAL ENGR.

CERTIFICATE OF ARCHITECT
 I CERTIFY THAT ALL THE ARCHITECTURAL DRAWINGS OF THE PROJECT AT R.S.DAG NOS 473, 474, 475, 476, 477, 478, 479, 480, 481, 482, 483, 484, 485, 486, 487, 488, 489, 490, 491, 492, 493, 494, 495, 496, 497, 498, 499, 500, 501, 502, 503, 504, 505, 506, 507, 508, 509, 510, 511, 512, 513, 514, 515, 516, 517, 518, 519, 520, 521, 522, 523, 524, 525, 526, 527, 528, 529, 530, 531, 532, 533, 534, 535, 536, 537, 538, 539, 540, 541, 542, 543, 544, 545, 546, 547, 548, 549, 550, 551, 552, 553, 554, 555, 556, 557, 558, 559, 560, 561, 562, 563, 564, 565, 566, 567, 568, 569, 570, 571, 572, 573, 574, 575, 576, 577, 578, 579, 580, 581, 582, 583, 584, 585, 586, 587, 588, 589, 590, 591, 592, 593, 594, 595, 596, 597, 598, 599, 600, 601, 602, 603, 604, 605, 606, 607, 608, 609, 610, 611, 612, 613, 614, 615, 616, 617, 618, 619, 620, 621, 622, 623, 624, 625, 626, 627, 628, 629, 630, 631, 632, 633, 634, 635, 636, 637, 638, 639, 640, 641, 642, 643, 644, 645, 646, 647, 648, 649, 650, 651, 652, 653, 654, 655, 656, 657, 658, 659, 660, 661, 662, 663, 664, 665, 666, 667, 668, 669, 670, 671, 672, 673, 674, 675, 676, 677, 678, 679, 680, 681, 682, 683, 684, 685, 686, 687, 688, 689, 690, 691, 692, 693, 694, 695, 696, 697, 698, 699, 700, 701, 702, 703, 704, 705, 706, 707, 708, 709, 710, 711, 712, 713, 714, 715, 716, 717, 718, 719, 720, 721, 722, 723, 724, 725, 726, 727, 728, 729, 730, 731, 732, 733, 734, 735, 736, 737, 738, 739, 740, 741, 742, 743, 744, 745, 746, 747, 748, 749, 750, 751, 752, 753, 754, 755, 756, 757, 758, 759, 760, 761, 762, 763, 764, 765, 766, 767, 768, 769, 770, 771, 772, 773, 774, 775, 776, 777, 778, 779, 780, 781, 782, 783, 784, 785, 786, 787, 788, 789, 790, 791, 792, 793, 794, 795, 796, 797, 798, 799, 800, 801, 802, 803, 804, 805, 806, 807, 808, 809, 810, 811, 812, 813, 814, 815, 816, 817, 818, 819, 820, 821, 822, 823, 824, 825, 826, 827, 828, 829, 830, 831, 832, 833, 834, 835, 836, 837, 838, 839, 840, 841, 842, 843, 844, 845, 846, 847, 848, 849, 850, 851, 852, 853, 854, 855, 856, 857, 858, 859, 860, 861, 862, 863, 864, 865, 866, 867, 868, 869, 870, 871, 872, 873, 874, 875, 876, 877, 878, 879, 880, 881, 882, 883, 884, 885, 886, 887, 888, 889, 890, 891, 892, 893, 894, 895, 896, 897, 898, 899, 900, 901, 902, 903, 904, 905, 906, 907, 908, 909, 910, 911, 912, 913, 914, 915, 916, 917, 918, 919, 920, 921, 922, 923, 924, 925, 926, 927, 928, 929, 930, 931, 932, 933, 934, 935, 936, 937, 938, 939, 940, 941, 942, 943, 944, 945, 946, 947, 948, 949, 950, 951, 952, 953, 954, 955, 956, 957, 958, 959, 960, 961, 962, 963, 964, 965, 966, 967, 968, 969, 970, 971, 972, 973, 974, 975, 976, 977, 978, 979, 980, 981, 982, 983, 984, 985, 986, 987, 988, 989, 990, 991, 992, 993, 994, 995, 996, 997, 998, 999, 1000.

MONAL AGRAWAL
 Regd. Architect
 New Town Kolkata Development Authority
 Enrolment No. ACHE/KA/16/00031

SIGNATURE OF ARCHITECT

CERTIFICATE OF GEO - TECHNICAL ENGINEER
 IT IS CERTIFIED THAT THE COMPREHENSIVE GEO-TECHNICAL REPORT ON SOIL INVESTIGATION HAS BEEN PREPARED BY ME FOR DESIGN AND CALCULATION OF THE FOUNDATION BY ANALYZING THE SOIL SAMPLES FOR ESTIMATING THE BEARING CAPACITY OF THE SOIL ON WHICH FOUNDATION OF THE STRUCTURE WILL BE CONSTRUCTED. I SHALL ALSO CHECK THE NATURE OF THE SOIL AFTER EXCAVATION AT SITE SO THAT FOUNDATION IS EXTENDED UP TO THE APPROPRIATE DEPTH THAT HAS BEEN PROPOSED IN THE GEO-TECHNICAL REPORT.

Subir Ranjan Sankar
 Regd. Town Planner
 New Town Kolkata Development Authority
 Enrolment No.: TPER/NKA/D/16/00031

SIGNATURE OF TOWN PLANNER OR URBAN DESIGNER

SIGNATURE OF STRUCTURAL REVIEWER

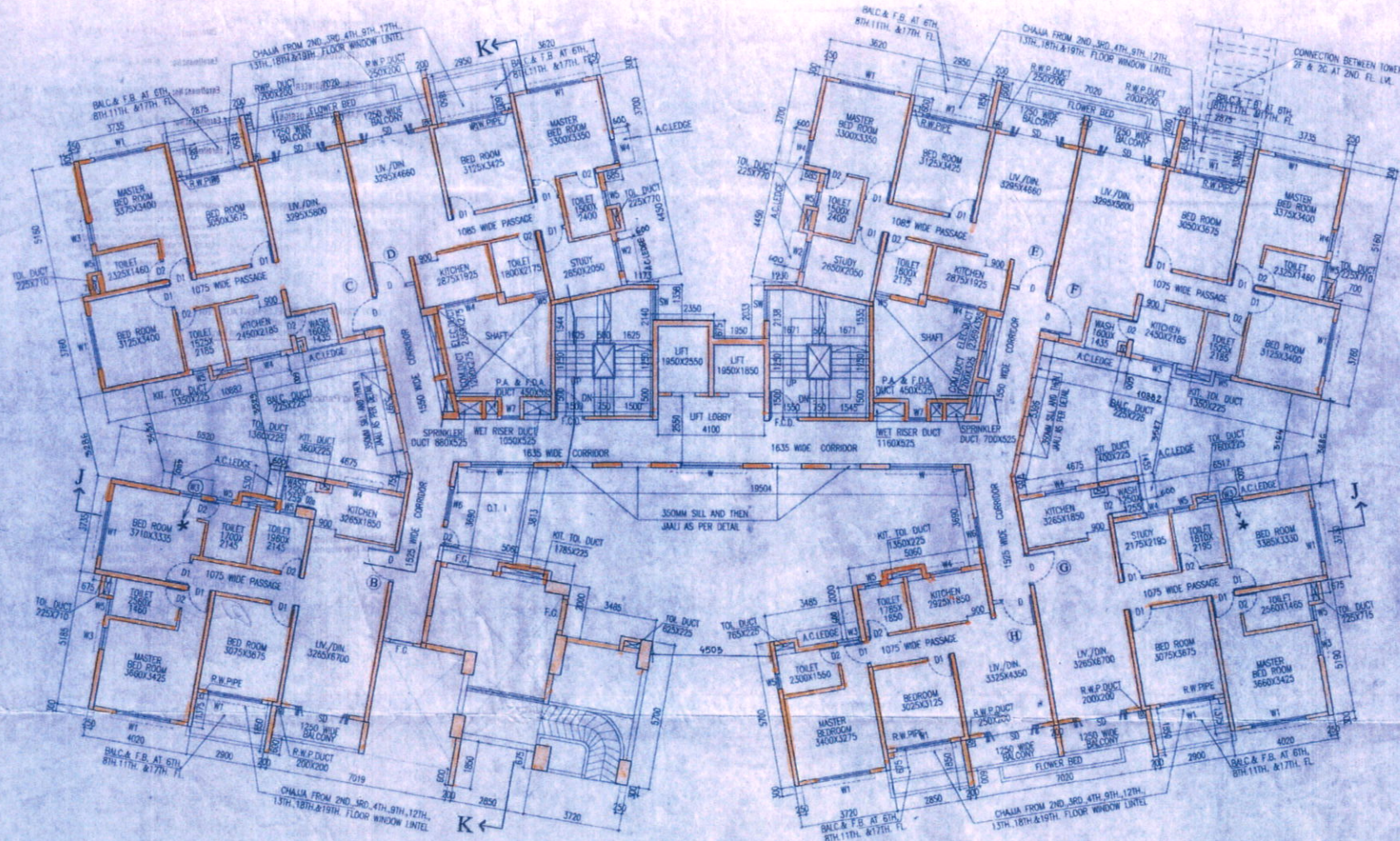
SANJIB GUHA
 BSC, BCE, FIE (P-115554-S)
 CHARTERED ENGINEER
 STR/NKA/D/16/00031

TITLE
 GROUND & FIRST FLOOR PLAN (TOWER - 2D)

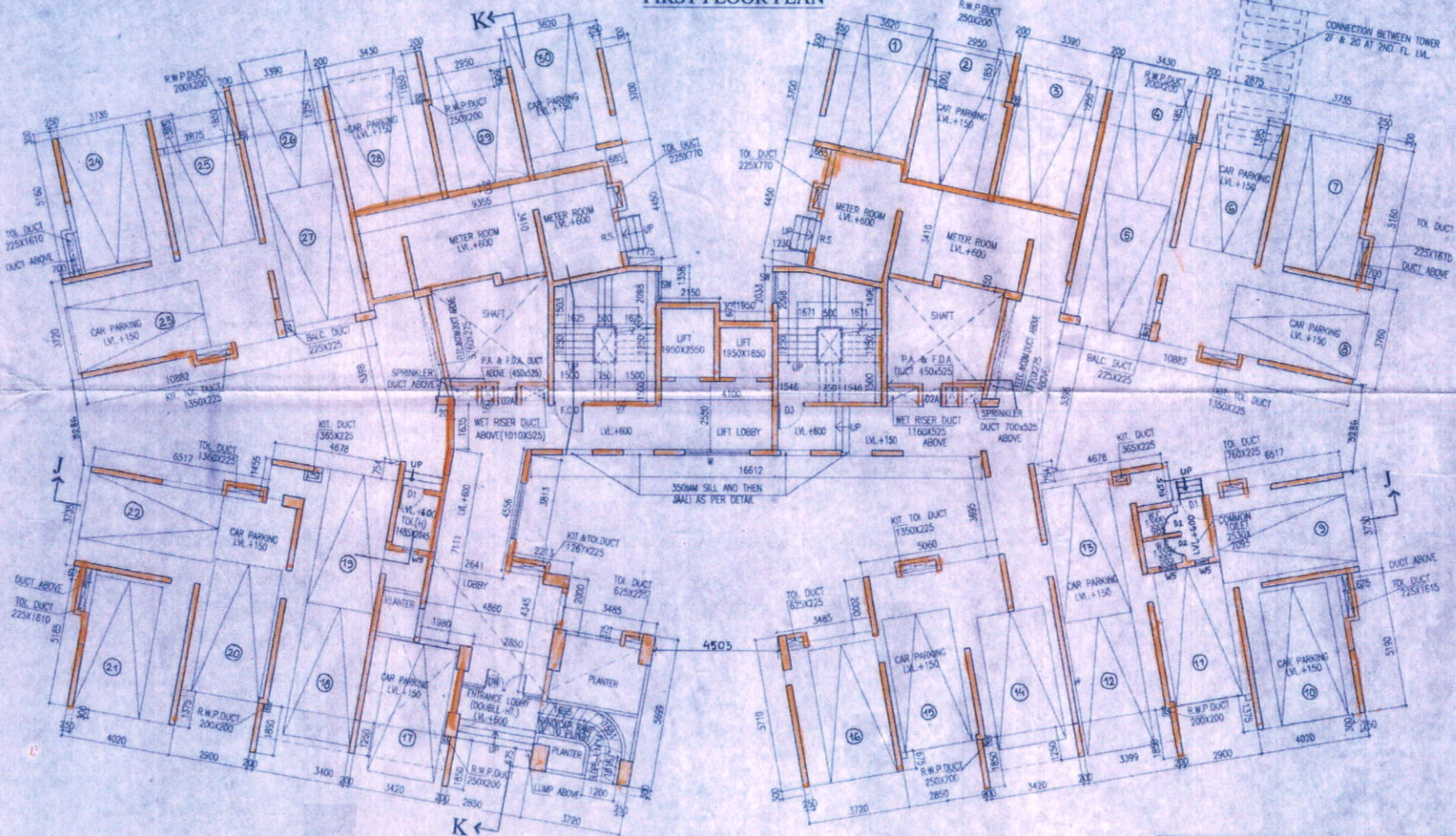
PROJECT:
 REVISED (GH), (BH+VII) AND (GH-XI) STORED RESIDENTIAL BUILDINGS AT MOUZA - BHATENDA, R.S.DAG NOS 473/474, 475, 476, 477, 478, 479, 480, 481, 482, 483, 484, 485, 486, 487, 488, 489, 490, 491, 492, 493, 494, 495, 496, 497, 498, 499, 500, 501, 502, 503, 504, 505, 506, 507, 508, 509, 510, 511, 512, 513, 514, 515, 516, 517, 518, 519, 520, 521, 522, 523, 524, 525, 526, 527, 528, 529, 530, 531, 532, 533, 534, 535, 536, 537, 538, 539, 540, 541, 542, 543, 544, 545, 546, 547, 548, 549, 550, 551, 552, 553, 554, 555, 556, 557, 558, 559, 560, 561, 562, 563, 564, 565, 566, 567, 568, 569, 570, 571, 572, 573, 574, 575, 576, 577, 578, 579, 580, 581, 582, 583, 584, 585, 586, 587, 588, 589, 590, 591, 592, 593, 594, 595, 596, 597, 598, 599, 600, 601, 602, 603, 604, 605, 606, 607, 608, 609, 610, 611, 612, 613, 614, 615, 616, 617, 618, 619, 620, 621, 622, 623, 624, 625, 626, 627, 628, 629, 630, 631, 632, 633, 634, 635, 636, 637, 638, 639, 640, 641, 642, 643, 644, 645, 646, 647, 648, 649, 650, 651, 652, 653, 654, 655, 656, 657, 658, 659, 660, 661, 662, 663, 664, 665, 666, 667, 668, 669, 670, 671, 672, 673, 674, 675, 676, 677, 678, 679, 680, 681, 682, 683, 684, 685, 686, 687, 688, 689, 690, 691, 692, 693, 694, 695, 696, 697, 698, 699, 700, 701, 702, 703, 704, 705, 706, 707, 708, 709, 710, 711, 712, 713, 714, 715, 716, 717, 718, 719, 720, 721, 722, 723, 724, 725, 726, 727, 728, 729, 730, 731, 732, 733, 734, 735, 736, 737, 738, 739, 740, 741, 742, 743, 744, 745, 746, 747, 748, 749, 750, 751, 752, 753, 754, 755, 756, 757, 758, 759, 760, 761, 762, 763, 764, 765, 766, 767, 768, 769, 770, 771, 772, 773, 774, 775, 776, 777, 778, 779, 780, 781, 782, 783, 784, 785, 786, 787, 788, 789, 790, 791, 792, 793, 794, 795, 796, 797, 798, 799, 800, 801, 802, 803, 804, 805, 806, 807, 808, 809, 810, 811, 812, 813, 814, 815, 816, 817, 818, 819, 820, 821, 822, 823, 824, 825, 826, 827, 828, 829, 830, 831, 832, 833, 834, 835, 836, 837, 838, 839, 840, 841, 842, 843, 844, 845, 846, 847, 848, 849, 850, 851, 852, 853, 854, 855, 856, 857, 858, 859, 860, 861, 862, 863, 864, 865, 866, 867, 868, 869, 870, 871, 872, 873, 874, 875, 876, 877, 878, 879, 880, 881, 882, 883, 884, 885, 886, 887, 888, 889, 890, 891, 892, 893, 894, 895, 896, 897, 898, 899, 900, 901, 902, 903, 904, 905, 906, 907, 908, 909, 910, 911, 912, 913, 914, 915, 916, 917, 918, 919, 920, 921, 922, 923, 924, 925, 926, 927, 928, 929, 930, 931, 932, 933, 934, 935, 936, 937, 938, 939, 940, 941, 942, 943, 944, 945, 946, 947, 948, 949, 950, 951, 952, 953, 954, 955, 956, 957, 958, 959, 960, 961, 962, 963, 964, 965, 966, 967, 968, 969, 970, 971, 972, 973, 974, 975, 976, 977, 978, 979, 980, 981, 982, 983, 984, 985, 986, 987, 988, 989, 990, 991, 992, 993, 994, 995, 996, 997, 998, 999, 1000.

AGRAWAL & AGRAWAL
 BARODA
 KOLI KATA

SCALE	DATE	SHEET NO	DEALT	CHECKED
1:100	06.12.18	29 OF 41	SAMPA	SHILA



FIRST FLOOR PLAN



GROUND FLOOR PLAN

NOTE
 * THIS WINDOW IS PROVIDED ONLY FOR ACCESS TO A.C. LEDGE FOR MAINTENANCE OF A.C.

- NAME OF OWNER**
NAME OF THE COMPANY
1. M/s. Adya Real Estates Private Limited
 2. M/s. Alshan Supply Private Limited
 3. M/s. Anchor Vanijya Private Limited
 4. M/s. Antrama Advisory Private Limited
 5. M/s. Antrama Dealers Private Limited
 6. M/s. Anukaan Supply Private Limited
 7. M/s. Aravali Hirse Private Limited
 8. M/s. Arch Vanijya Private Limited
 9. M/s. Arpana Consultancy Private Limited
 10. M/s. Aspara Tie Up Private Limited
 11. M/s. Artline Homes Private Limited
 12. M/s. Artline Projects Private Limited
 13. M/s. Artline Real Estate Private Limited
 14. M/s. Average Complex Private Limited
 15. M/s. Average Housing Private Limited
 16. M/s. Average Infracon Private Limited
 17. M/s. Average Nirman Private Limited
 18. M/s. Average Projects Private Limited
 19. M/s. Basudev Housing Private Limited
 20. M/s. Basudev Enclave Private Limited
 21. M/s. Blooding Tie Up Private Limited
 22. M/s. Booster Heights Private Limited
 23. M/s. Bosteer Hirse Private Limited
 24. M/s. Brjibhumi Agents Private Limited
 25. M/s. Brjibhumi Tie Up Private Limited
 26. M/s. Chyngyan Vyapar Private Limited
 27. M/s. Crossway Heights Private Limited
 28. M/s. Crossway Nirman Private Limited
 29. M/s. Dayanidhi Suppliers Private Limited
 30. M/s. Delta Vyapar Private Limited
 31. M/s. Dhanganaga Hirse Private Limited
 32. M/s. Dhanganaga Infracon Private Limited
 33. M/s. Dhanganaga Reality Private Limited
 34. M/s. Dhanganaga Residency Private Limited
 35. M/s. Dreamland Hirse Private Limited
 36. M/s. Elegant Nirman Private Limited
 37. M/s. Gajjanan Vinayak Private Limited
 38. M/s. Gajjanani Builders Private Limited
 39. M/s. Gajjanani Constructions Private Limited
 40. M/s. Gajjanani Hirse Private Limited
 41. M/s. Gajjanani Realty Private Limited
 42. M/s. Gajjanani Enclave Private Limited
 43. M/s. Gajjanani Homes Private Limited
 44. M/s. Gajjanani Infracon Private Limited
 45. M/s. Gajjanani Nirman Private Limited
 46. M/s. Gajjanani Projects Private Limited
 47. M/s. Gajjanani Real Estate Private Limited
 48. M/s. Ganesh Traccon Private Limited
 49. M/s. Ganeshvani Promoters Private Limited
 50. M/s. Geeshtop Nirman Private Limited
 51. M/s. Guidance Vyapar Private Limited
 52. M/s. Gulmarg Vyapar Private Limited
 53. M/s. Hanurang Tie Up Private Limited
 54. M/s. Indovar Traccon Private Limited
 55. M/s. Jainendra Distributors Private Limited
 56. M/s. Jainendra Marketing Private Limited
 57. M/s. Jainendra Merchants Private Limited
 58. M/s. Jaldham Advisory Private Limited
 59. M/s. Jaldham Tie Up Private Limited
 60. M/s. Jhilmil Sales Private Limited
 61. M/s. Jhilmil Vyapar Private Limited
 62. M/s. Jinay Merchants Private Limited
 63. M/s. Juhl Marketing Private Limited
 64. M/s. Kalakriti Enclave Private Limited
 65. M/s. Kalakriti Homes Private Limited
 66. M/s. Kalakriti Housing Private Limited
 67. M/s. Kalaarti Properties Private Limited
 68. M/s. Kalakriti Realty Private Limited
 69. M/s. Kamyabi Consultants Private Limited
 70. M/s. Lifelong Enclave Private Limited
 71. M/s. Limelight Hirse Private Limited
 72. M/s. Linrose Constructions Private Limited
 73. M/s. Linrose Housing Private Limited
 74. M/s. Linrose Residency Private Limited
 75. M/s. Manohar Dealer Private Limited
 76. M/s. Manohar Vanijya Private Limited
 77. M/s. Matrix Sales Private Limited
 78. M/s. Maxflow Barter Private Limited
 79. M/s. Moonlight Constructions Private Limited
 80. M/s. Moonlight Nirman Private Limited
 81. M/s. Moonlight Residency Private Limited
 82. M/s. Murali Advisory Private Limited
 83. M/s. Newwave Merchants Private Limited
 84. M/s. Original Reality Private Limited
 85. M/s. Panchaj Supply Private Limited
 86. M/s. Pawanputra Barter Private Limited
 87. M/s. Pawanputra Sales Private Limited
 88. M/s. Prajapati Barter Private Limited
 89. M/s. Prajapati Commercial Private Limited
 90. M/s. Prajapati Dealer Private Limited
 91. M/s. Prensagar Advisory Private Limited
 92. M/s. Prensagar Tie Up Private Limited
 93. M/s. Prime Rose Marketing Private Limited
 94. M/s. Radial Housing Private Limited
 95. M/s. Radial Residency Private Limited
 96. M/s. Rinjith Commodities Private Limited
 97. M/s. Rosemary Distributors Private Limited
 98. M/s. Rosemary Tie Up Private Limited
 99. M/s. Sadabhar Vyapar Private Limited
 100. M/s. Sagun Advisory Services Private Limited
 101. M/s. Sanjayani Vanijya Private Limited
 102. M/s. Sargam Vyapar Private Limited
 103. M/s. Sawarg Vanijya Private Limited
 104. M/s. Shikshal Dealers Private Limited
 105. M/s. Shikshal Sales Private Limited
 106. M/s. Sidhanti Style Barter Private Limited
 107. M/s. Sidhanti Suppliers Private Limited
 108. M/s. Silverline Vanijya Private Limited
 109. M/s. Skylink Merchants Private Limited
 110. M/s. Spandan Suppliers Private Limited
 111. M/s. Splendor Vyapar Private Limited
 112. M/s. Style Merchants Private Limited
 113. M/s. Sukhija Vyapar Private Limited
 114. M/s. Sunmart Vyapar Private Limited
 115. M/s. Sunshine Barter Private Limited
 116. M/s. Superior Complex Private Limited
 117. M/s. Superior Hirse Private Limited
 118. M/s. Surlithani Advisory Private Limited
 119. M/s. Sursartha Advisory Services Private Limited
 120. M/s. Sursartha Consultants Private Limited
 121. M/s. Swastika Barter Private Limited
 122. M/s. Terapath Consultancy Services Private Limited
 123. M/s. Timeless Real Estate Private Limited
 124. M/s. Toplen Vyapar Private Limited
 125. M/s. Vidhata Advisory Services Private Limited

SIGNATURE OF OWNER

REVISIONS
NO. DATE BY
1. 28/02/18

SAUNATH MANSUR
Assistant Architect
New Town Kolkata Development Authority
CHIEF ARCHITECT
New Town Kolkata Development Authority
02/02/18
Executive Officer
Regional Panchayat Society

NEW TOWN KOLKATA DEVELOPMENT AUTHORITY
No Objection Certificate for
Sanction of Building Plan for Construction Purpose
Memo No. 2622(3)/NKBH/RS-DR(3)/10/19
Date: 30.07.2018
Building Particulars: Residential (G+11), (G+9+V11) (G+11)
Structure: RCC framed structure with brick masonry
Use: Residential
Site: The proposal is recommended for approval
subject to fulfillment of conditions mentioned in the plan.

STRUCTURAL DRAWINGS, STRUCTURAL
DESIGN CALCULATIONS & SOIL TEST
REPORT ARE NOT CHECKED AND NOT
FOR RECORDS ONLY.
Note: The NCC has been issued on the basis of
documents submitted by the applicant and approved by the
Assistant Architect. The applicant is responsible for the
accuracy and completeness of the data and drawings
submitted. The NCC does not cover any
design, etc. The NCC does not cover any

ARCHITECT: HON. H. BHASKAR
Enrollment No: HNH/NKBH/10/0010
CIVIL STRUCTURAL ENGINEER:
SHANU J. FREELI
Enrollment No: 5701/NKBH/10/0030
GEO-TECHNICAL ENGINEER:
SHYAMAL K. MITRA
Enrollment No: 5761-HISD/09/0010
TOWN PLANNER/URBAN DESIGNER:
SUKR. K. MUKHARJEE
Enrollment No: T06/NKBH/10/0036
STRUCTURAL ENGINEER:
SANTOS GUHA
Enrollment No: 5761/NKBH/15/0013