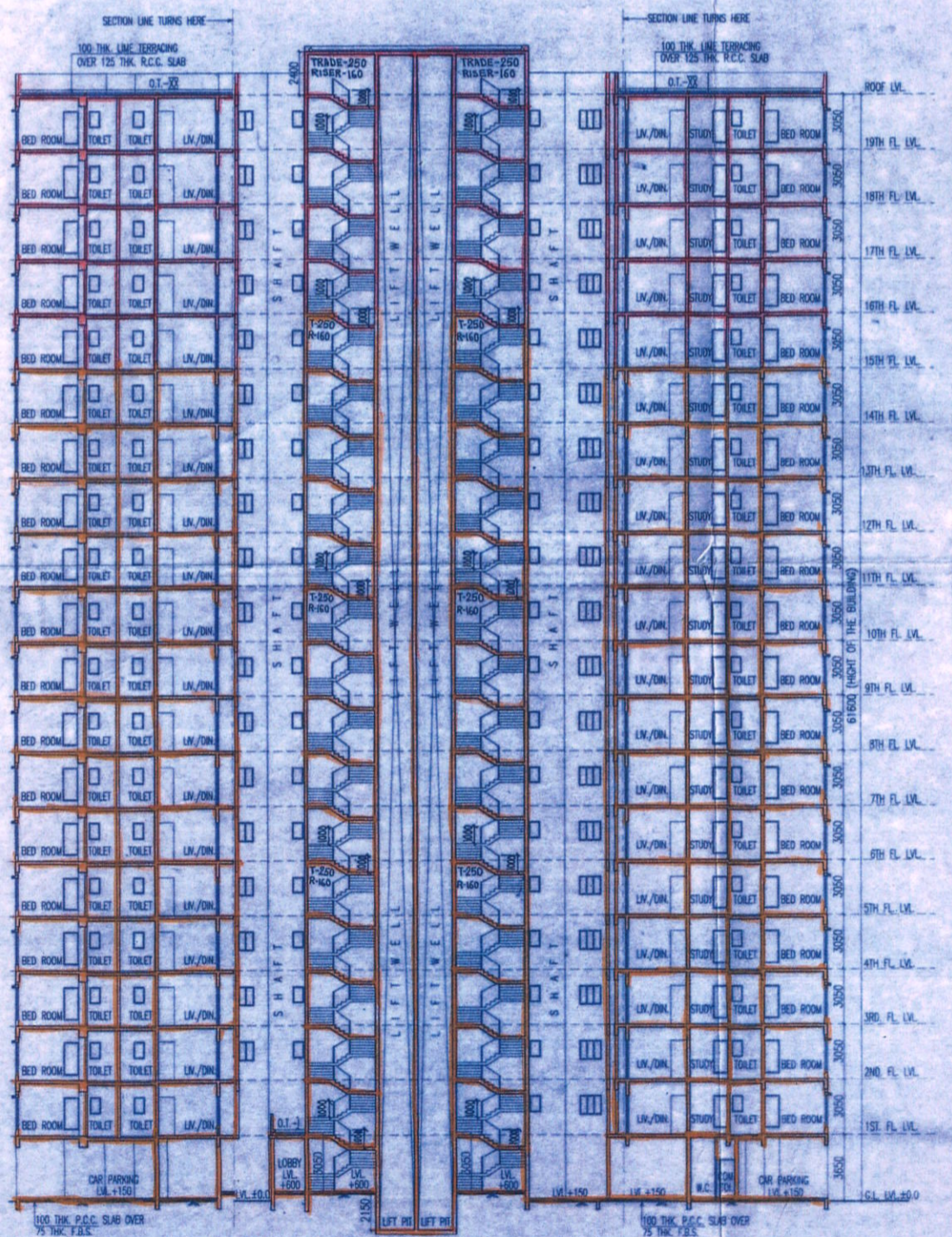
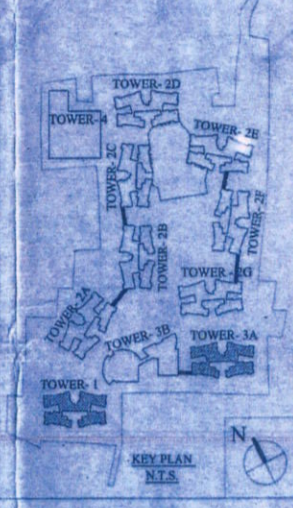


SECTION-B-B



SECTION-A-A



- NAME OF OWNER  
NAME OF THE COMPANY
- M/s. Adya Real Estates Private Limited
  - M/s. Alshah Supply Private Limited
  - M/s. Anchor Vanija Private Limited
  - M/s. Antratrip Advisory Private Limited
  - M/s. Antratrip Dealers Private Limited
  - M/s. Anuram Supply Private Limited
  - M/s. Aravali Hirise Private Limited
  - M/s. Arsh Vanija Private Limited
  - M/s. Arpana Consultancy Private Limited
  - M/s. Arpana Tie Up Private Limited
  - M/s. Artiline Homes Private Limited
  - M/s. Artiline Projects Private Limited
  - M/s. Artiline Real Estate Private Limited
  - M/s. Average Complex Private Limited
  - M/s. Average Housing Private Limited
  - M/s. Average Infracon Private Limited
  - M/s. Average Nirman Private Limited
  - M/s. Average Projects Private Limited
  - M/s. Basudev Enclave Private Limited
  - M/s. Basudev Housing Private Limited
  - M/s. Bluebird Tie Up Private Limited
  - M/s. Booster Heights Private Limited
  - M/s. Booster Hirise Private Limited
  - M/s. Brijbhumi Agents Private Limited
  - M/s. Brijbhumi Tie Up Private Limited
  - M/s. Citywings Vyapaar Private Limited
  - M/s. Crossway Heights Private Limited
  - M/s. Crossway Nirman Private Limited
  - M/s. Dayanidhi Suppliers Private Limited
  - M/s. Delta Vyapaar Private Limited
  - M/s. Dhanganga Hirise Private Limited
  - M/s. Dhanganga Infracon Private Limited
  - M/s. Dhanganga Realty Private Limited
  - M/s. Dhanganga Residency Private Limited
  - M/s. Dreamland Hirise Private Limited
  - M/s. Elegant Nirman Private Limited
  - M/s. Gajbadan Vinimay Private Limited
  - M/s. Gajgami Buildcon Private Limited
  - M/s. Gajgami Constructions Private Limited
  - M/s. Gajgami Hirise Private Limited
  - M/s. Gajgami Reality Private Limited
  - M/s. Gajgami Enclave Private Limited
  - M/s. Gajgami Homes Private Limited
  - M/s. Gajgami Infracon Private Limited
  - M/s. Gajgami Nirman Private Limited
  - M/s. Gajgami Projects Private Limited
  - M/s. Gajgami Real Estate Private Limited
  - M/s. Ganesh Traccon Private Limited
  - M/s. Ganeshvani Promoters Private Limited
  - M/s. Greentop Nirman Private Limited
  - M/s. Guidance Vyapaar Private Limited
  - M/s. Gullmarg Vyapaar Private Limited
  - M/s. Hanurang Tie Up Private Limited
  - M/s. Indivar Traccon Private Limited
  - M/s. Jainendra Distributors Private Limited
  - M/s. Jainendra Marketing Private Limited
  - M/s. Jainendra Merchants Private Limited
  - M/s. Jaldham Advisory Private Limited
  - M/s. Jaldham Tie Up Private Limited
  - M/s. Jilimil Sales Private Limited
  - M/s. Jilimil Vyapaar Private Limited
  - M/s. Jiny Merchants Private Limited
  - M/s. Juhi Marketing Private Limited
  - M/s. Kalakriti Enclave Private Limited
  - M/s. Kalakriti Homes Private Limited
  - M/s. Kalakriti Housing Private Limited
  - M/s. Kalakriti Properties Private Limited
  - M/s. Kalakriti Realty Private Limited
  - M/s. Kamyasi Consultants Private Limited
  - M/s. Lifelong Enclave Private Limited
  - M/s. Limelight Hirise Private Limited
  - M/s. Linkrose Constructions Private Limited
  - M/s. Linkrose Housing Private Limited
  - M/s. Linkrose Residency Private Limited
  - M/s. Manobal Dealer Private Limited
  - M/s. Manobal Vanija Private Limited
  - M/s. Matrix Sales Private Limited
  - M/s. Maxflow Barter Private Limited
  - M/s. Moonlife Constructions Private Limited
  - M/s. Moonlife Nirman Private Limited
  - M/s. Moonlife Residency Private Limited
  - M/s. Mridul Advisory Private Limited
  - M/s. Newwave Merchants Private Limited
  - M/s. Original Realty Private Limited
  - M/s. Panghat Supply Private Limited
  - M/s. Pawanputra Barter Private Limited
  - M/s. Pawanputra Sales Private Limited
  - M/s. Prabhakar Barter Private Limited
  - M/s. Prajapati Commercial Private Limited
  - M/s. Prajapati Dealer Private Limited
  - M/s. Premeasagar Advisory Private Limited
  - M/s. Premeasagar Tie Up Private Limited
  - M/s. Prime Rose Marketing Private Limited
  - M/s. Radial Housing Private Limited
  - M/s. Radial Residency Private Limited
  - M/s. Rimjhim Commodities Private Limited
  - M/s. Rosemery Distributors Private Limited
  - M/s. Rosemery Tie Up Private Limited
  - M/s. Sadabahar Vyapaar Private Limited
  - M/s. Sagun Advisory Services Private Limited
  - M/s. Sanjivani Vanija Private Limited
  - M/s. Sargam Vyapaar Private Limited
  - M/s. Sawarg Vanija Private Limited
  - M/s. Shivasthal Dealers Private Limited
  - M/s. Shivasthal Sales Private Limited
  - M/s. Siddha Style Barter Private Limited
  - M/s. Sidhant Suppliers Private Limited
  - M/s. Silverline Vinimay Private Limited
  - M/s. Skylink Merchants Private Limited
  - M/s. Spandan Suppliers Private Limited
  - M/s. Splendor Vyapaar Private Limited
  - M/s. Style Merchants Private Limited
  - M/s. Sukhjit Vyapaar Private Limited
  - M/s. Sunmart Vyapaar Private Limited
  - M/s. Sunshine Barter Private Limited
  - M/s. Superior Complex Private Limited
  - M/s. Superior Hirise Private Limited
  - M/s. Surdhuni Advisory Private Limited
  - M/s. Sursarita Advisory Services Private Limited
  - M/s. Sursarita Consultants Private Limited
  - M/s. Swastik Barter Private Limited
  - M/s. Terapanth Consultancy Services Private Limited
  - M/s. Timeless Real Estate Private Limited
  - M/s. Topten Vyapaar Private Limited
  - M/s. Vidhata Advisory Services Private Limited

CERTIFICATE OF STRUCTURAL ENGINEER

CERTIFY THAT THE STRUCTURAL DRAWING AND DESIGN OF BOTH THE FOUNDATION AND SUPERSTRUCTURE OF THE BUILDING / BUILDINGS HAS BEEN MADE CONSIDERING THE SOIL TEST REPORT, AS PER THE RULES AND REGULATIONS MADE UNDER THE ACT AND ALSO CONSIDERING ALL POSSIBLE LOADS, SEISMIC LOAD AND THE MOMENTS GENERATED BY THE PROPOSED STRUCTURE AS PER THE BUREAU OF INDIAN STANDARD AND NATIONAL BUILDING CODE OF INDIA AND CERTIFIED THAT IT IS SAFE AND STABLE IN ALL RESPECT AND THESE PROVISIONS SHALL BE ADHERED TO DURING THE CONSTRUCTION.

*SANJIV PAREKH*  
M.E. (STRUCT.), M.E. (CONST. ENG.),  
B. C. E., FIE (E-018202-4)  
STER/NRDA / 10 / 00030

SIGNATURE OF STRUCTURAL ENGG.  
CERTIFICATE OF ARCHITECT

I CERTIFY THAT ALL THE ARCHITECTURAL DRAWINGS OF THE PROJECT AT R.S.DAG NOS.473,474, 475,476,477,478,479, 480, 481(P),483, 489, 490, 491, 492,493, 494, 495, 496, 497, 499, 500, 501(P), 502(P), 503(P), 504(P), 506(P),507(P), 509(P), 470(P), 526(P),531,532,533,535,501/716(P), OF MOUZA - BHATENDA, J.L. NO.28 HAVE BEEN PREPARED BY ME COMPLYING WITH THE NEW TOWN KOLKATA PLANNING AREA (BUILDING) RULES, 2014. I ALSO CERTIFY THAT THE PLANS AND DRAWINGS PREPARED BY ME COMPLYING WITH ALL THE PROVISIONS REGARDING THE FIRE PROTECTION AS PER THE PREVAILING NATIONAL BUILDING CODE OF INDIA I SHALL BE HELD RESPONSIBLE IF ANY INCORRECT INFORMATION IS FURNISHED BY ME OR ANY VIOLATION OF PROVISIONS OF THESE RULES OR THE PREVAILING NATIONAL BUILDING CODE IS FOUND IN ANY OF THE DRAWINGS AND DOCUMENTS, SIGNED BY ME AND SUBMITTED TO THE SANCTIONING AUTHORITY FOR OBTAINING SANCTION.

*H. Agrawal*  
MONAL AGRAWAL  
Regd. Architect  
New Town Kolkata Development Authority  
Enrollment No. ACHR/NKDA/10/0020

SIGNATURE OF ARCHITECT  
CERTIFICATE OF GEO - TECHNICAL ENGINEER

IT IS CERTIFIED THAT THE COMPREHENSIVE GEO-TECHNICAL REPORT ON SOIL INVESTIGATION HAS BEEN PREPARED BY ME FOR DESIGN AND CALCULATION OF THE FOUNDATION BY ANALYZING THE SOIL SAMPLES FOR ESTIMATING THE BEARING CAPACITY OF THE SOIL ON WHICH FOUNDATION OF THE STRUCTURE WILL BE CONSTRUCTED. I SHALL ALSO CHECK THE NATURE OF THE SOIL AFTER EXCAVATION AT SITE SO THAT FOUNDATION IS EXTENDED UP TO THE APPROPRIATE DEPTH THAT HAS BEEN PROPOSED IN THE GEO-TECHNICAL REPORT.

*SHYAMAL KUMAR MITRA, B.E. (CIVIL)*  
GEO-TECHNICAL ENGINEER  
ENROLLMENT NO. GTER-HIDCO/01/00010

SIGNATURE OF GEO - TECHNICAL ENGINEER

*Subir Ranjan Sarkar*  
Subir Ranjan Sarkar  
Regd. Town Planner  
New Town Kolkata Development Authority  
Enrollment No.: TPER/NKDA/10/00036

SIGNATURE OF TOWN PLANNER OR URBAN DESIGNER

*SANJIB GUHA*  
BSC, BCE, FIE (F-115654-5)  
CHARTERED ENGINEER  
STRV/NKDA/15/00003

SIGNATURE OF STRUCTURAL REVIEWER

TITLE: SECTION - 'A-A' & 'B-B' (TOWER - 1) (TOWER-3A IS SIMILAR)

PROJECT: REVISED (G-II), (B-G-VII) AND (G-XIX) STORED RESIDENTIAL BUILDINGS AT MOUZA - BHATENDA, R.S.DAG NOS.473,474, 475, 476, 477, 478, 479, 480, 481(P), 483, 489, 490, 491, 492, 493, 494, 495, 496, 497, 499, 500,501(P),502(P),503(P),504(P),506(P),507(P), 509(P), 470(P), 526(P),531,532,533,535,501/716(P) RECORDED IN L.R.KHATIAN NO.2821, 3233, 3281, 3283, 3248, 3285, 3286, 3282, 2849, 2848, 2887, 2846, 3234, 3315, 2855, 2856, 2857, 2858, 2859, 3318, 3317, 3412, 3341, 3340, 2803, 2806, 2805, 2802, 2801, 2800, 2804, 2807, 3302, 3304, 3306, 3301, 3303, 3305, 3312, 2853, 3136, 3307, 3309, 3311, 3310, 3308, 3313, 3411, 3314, 3288, 3287, 2830, 2829, 2828, 2827, 2826, 2825, 2845, 2844, 2843, 2842, 2841, 2840, 2839, 2838, 2837, 2836, 2835, 2834, 2833, 2832, 3240, 2815, 3316, 2854, 2809, 3308, 2814, 2819, 2850, 2851, 2852, 2822, 2823, 2824, 2796, 2797, 2798, 2799, 2816, 2817, 2818, 2810, 2811, 2812, 2813, 2792, 2793, 2794, 2795, 2820, 3073, 3072, 3238, 3236, 3237, 3235, 3239, 2866, 2860, 2861, 2862, 2863, 2864, 3071, 3265, 4092, 3279, 3070, 2866, 2831 & 2865, MOUZA - BHATENDA, J.L. NO. 28, P.S. RAJARHAT, WITHIN THE JURISDICTION OF RAJARHAT BISHPUR NO. 1 GRAM PANCHAYAT, DIST. - NORTH 24 PARGANAS, PREVIOUSLY SANCTIONED AND APPROVED BY EXECUTIVE OFFICER OF RAJARHAT PANCHAYAT SAMITY, DATED 15/12/15

ARCHITECTS  
AGRAWAL & AGRAWAL  
BARODA KOLKATA

SCALE	DATE	SHEET NO.	DEALT	CHECKED
1 : 200	06.12.16	10 OF 41	SUDIP	SHILA

SIGNATURE OF OWNER

18/91

ARCHITECT: MONAL AGARWAL Enrollment No: AENR/NRDA/10/00020  
 CIVIL/STRUCTURAL ENGINEER: SANJIV J. PAREKH Enrollment No: STER/NRDA/10/00030  
 GEO-TECHNICAL ENGINEER: SHYAMAL KR MITRA Enrollment No: GTER/H100/09/20010  
 TOWN PLANNER/URBAN DESIGNER: SUBRATOSH SARKAR Enrollment No: TPER/NRDA/10/00036  
 STRUCTURAL REVIEWER: SANGH SUTTA Enrollment No: STRV/NRDA/15/00013

STRUCTURAL DRAWINGS, STRUCTURAL DESIGN CALCULATIONS & SOIL TEST REPORTS ARE NOT CREATED AND NOT FOR RECORDS ONLY.

NOTE: This NOC has been issued on the basis of documents submitted by the applicant. It is not to be used by the applicant for any purpose other than the one mentioned above. If there is any material misrepresentation of fact or fraudulent act or any act of suppression of fact in connection with the above project including the concerned land, plans, drawings, design etc., then this NOC shall stand cancel.

**NEW TOWN KOLKATA DEVELOPMENT AUTHORITY**  
 No Objection Certificate for  
 Sanction of Building Plan for Construction Purpose

Memo No. 3622(3)/NRDA/BPS-04(3)/2014

Date: 30.07.2018

Building Particulars: Proposed revised (G+11), (B1G+V11) X (G+X1X) 2 storied Residential Building at Mowla Bhatnagar, J.L. No. 28, P.S. Rajarhat North 24th.

Note: The proposal is recommended for approval subject to submission of revision and clearance.

*Souparni Majumder*  
 Assistant Architect  
 New Town Kolkata Development Authority

*Sukrit Chatterjee*  
 Chief Architect  
 New Town Kolkata Development Authority

SANCTIONED & APPROVED

*[Signature]* 28/8/18  
 Executive Officer  
 Rajarhat Panchayat Samity