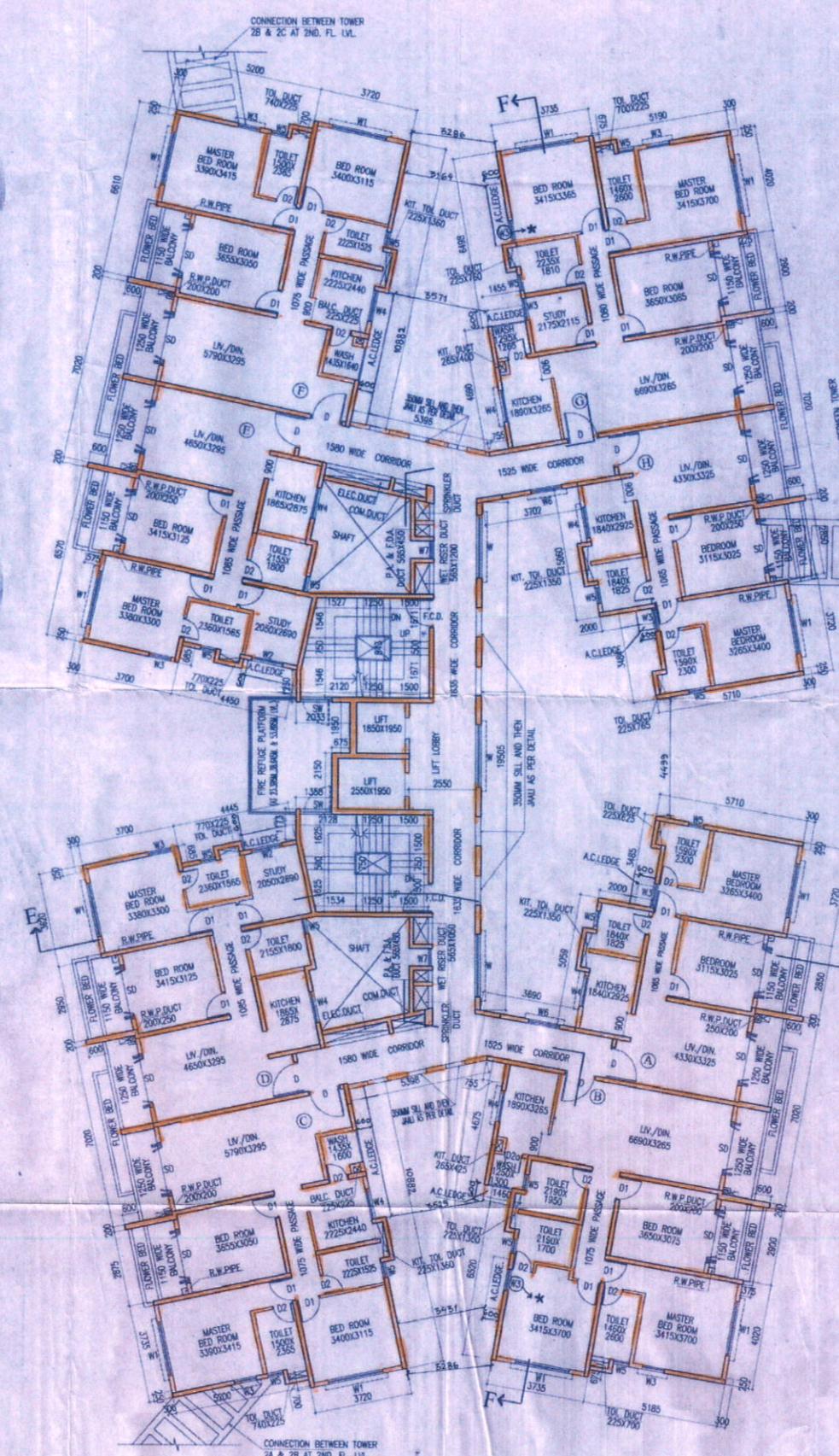
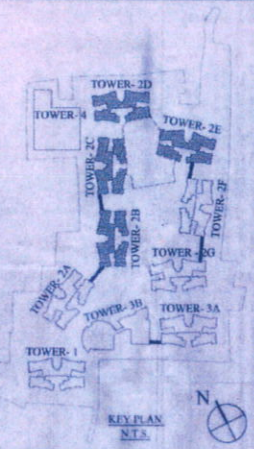


2ND,3RD,4TH,5TH,7TH,9TH,10TH,  
12TH,13TH,18TH & 19TH FLOOR PLAN



6TH,8TH,11TH & 17TH FLOOR PLAN



- | SCHEDULE OF DOORS & WINDOWS |      |
|-----------------------------|------|
| NO.                         | SIZE |
| D                           | 2150 |
| D1                          | 2150 |
| D1a                         | 2300 |
| D2                          | 2150 |
| D2a                         | 2150 |
| D3                          | 2150 |
| DW                          | 2400 |
| DW1                         | 2400 |
| SD                          | 2150 |
| SD1                         | 2150 |
| F.C.D.                      | 2150 |
| F.C.D1                      | 2150 |
| W                           | 850  |
| W1                          | 350  |
| W2                          | 350  |
| W3                          | 350  |
| W4                          | 1100 |
| W5                          | 1250 |
| W6                          | 350  |
| W7                          | 750  |
| SW                          | 750  |
- CONNECTION BETWEEN TOWER 2B & 2C AT 2ND FL. LV.
- CONNECTION BETWEEN TOWER 2B & 2C AT 2ND FL. LV.
- CONNECTION BETWEEN TOWER 2B & 2C AT 2ND FL. LV.
- CONNECTION BETWEEN TOWER 2B & 2C AT 2ND FL. LV.
- CONNECTION BETWEEN TOWER 2B & 2C AT 2ND FL. LV.

NAME OF OWNER

NAME OF THE COMPANY

1. M/s. Adya Real Estates Private Limited
2. M/s. Alphon Supply Private Limited
3. M/s. Anchor Vaniya Private Limited
4. M/s. Astrapra Advisory Private Limited
5. M/s. Antrama Dealers Private Limited
6. M/s. Anukaran Supply Private Limited
7. M/s. Aravali Hirse Private Limited
8. M/s. Arch Vaniya Private Limited
9. M/s. Arpana Consultancy Private Limited
10. M/s. Arpana Tie Up Private Limited
11. M/s. Arvika Homes Private Limited
12. M/s. Arvika Projects Private Limited
13. M/s. Arvika Realestate Private Limited
14. M/s. Avestra Complex Private Limited
15. M/s. Average Housing Private Limited
16. M/s. Average Infracon Private Limited
17. M/s. Average Nirman Private Limited
18. M/s. Average Projects Private Limited
19. M/s. Basuday Enclave Private Limited
20. M/s. Basuday Housing Private Limited
21. M/s. Bluebird Tie Up Private Limited
22. M/s. Booster Heights Private Limited
23. M/s. Booster Hirse Private Limited
24. M/s. Brihannai Agents Private Limited
25. M/s. Brihannai Tie Up Private Limited
26. M/s. Chryvings Vapaaar Private Limited
27. M/s. Crossway Heights Private Limited
28. M/s. Crossway Nirman Private Limited
29. M/s. Dayanidhi Suppliers Private Limited
30. M/s. Delta Vapaaar Private Limited
31. M/s. Dhanganga Hirse Private Limited
32. M/s. Dhanganga Infracon Private Limited
33. M/s. Dhanganga Realty Private Limited
34. M/s. Dhyanidhi Suppliers Private Limited
35. M/s. Dreamland Hirse Private Limited
36. M/s. Elegant Nirman Private Limited
37. M/s. Galbadan Vinimay Private Limited
38. M/s. Gagami Builders Private Limited
39. M/s. Gagami Constructions Private Limited
40. M/s. Gagami Hirse Private Limited
41. M/s. Gagami Realty Private Limited
42. M/s. Gajmukti Enclave Private Limited
43. M/s. Gajmukti Homes Private Limited
44. M/s. Gajmukti Infracon Private Limited
45. M/s. Gajmukti Nirman Private Limited
46. M/s. Gajmukti Projects Private Limited
47. M/s. Gajmukti Realstate Private Limited
48. M/s. Ganesh Tracorn Private Limited
49. M/s. Ganeshani Promoters Private Limited
50. M/s. Greenport Nirman Private Limited
51. M/s. Guidance Vapaaar Private Limited
52. M/s. Gullmarg Vapaaar Private Limited
53. M/s. Hanarang Tie Up Private Limited
54. M/s. Indvar Tracorn Private Limited
55. M/s. Jainendra Distributors Private Limited
56. M/s. Jainendra Marketing Private Limited
57. M/s. Jainendra Merchants Private Limited
58. M/s. Jaldham Advisory Private Limited
59. M/s. Jaldham Tie Up Private Limited
60. M/s. Jalmil Sales Private Limited
61. M/s. Jalmil Vapaaar Private Limited
62. M/s. Jany Merchants Private Limited
63. M/s. Juhl Marketing Private Limited
64. M/s. Kalakriti Enclave Private Limited
65. M/s. Kalakriti Homes Private Limited
66. M/s. Kalakriti Housing Private Limited
67. M/s. Kalakriti Properties Private Limited
68. M/s. Kalakriti Realty Private Limited
69. M/s. Karmyati Consultants Private Limited
70. M/s. Lifelong Enclave Private Limited
71. M/s. Limestone Hirse Private Limited
72. M/s. Linkrose Constructions Private Limited
73. M/s. Linkrose Housing Private Limited
74. M/s. Linkrose Residency Private Limited
75. M/s. Manohar Dealer Private Limited
76. M/s. Manohar Vaniya Private Limited
77. M/s. Marvix Sales Private Limited
78. M/s. Marflow Barter Private Limited
79. M/s. Moonlife Constructions Private Limited
80. M/s. Moonlife Nirman Private Limited
81. M/s. Moonlife Residency Private Limited
82. M/s. Mrishul Advisory Private Limited
83. M/s. Newswave Merchants Private Limited
84. M/s. Original Realty Private Limited
85. M/s. Pangehat Supply Private Limited
86. M/s. Pawanputra Barter Private Limited
87. M/s. Pawanputra Sales Private Limited
88. M/s. Prakash Barter Private Limited
89. M/s. Prakash Commercial Private Limited
90. M/s. Prakash Dealer Private Limited
91. M/s. Premasagar Advisory Private Limited
92. M/s. Premasagar Tie Up Private Limited
93. M/s. Prime Rosa Marketing Private Limited
94. M/s. Radial Housing Private Limited
95. M/s. Radial Residency Private Limited
96. M/s. Rimghim Commodities Private Limited
97. M/s. Roseemey Distributors Private Limited
98. M/s. Roseemey Tie Up Private Limited
99. M/s. Sadaabhar Vapaaar Private Limited
100. M/s. Sagan Advisory Services Private Limited
101. M/s. Sanjayani Vaniya Private Limited
102. M/s. Sarigan Vapaaar Private Limited
103. M/s. Savarg Vaniya Private Limited
104. M/s. Shivalok Dealers Private Limited
105. M/s. Shivasthal Sales Private Limited
106. M/s. Siddha Style Barter Private Limited
107. M/s. Sidhant Suppliers Private Limited
108. M/s. Silverline Vinimay Private Limited
109. M/s. Skylark Merchants Private Limited
110. M/s. Spandan Suppliers Private Limited
111. M/s. Splendor Vapaaar Private Limited
112. M/s. Style Merchants Private Limited
113. M/s. Sukhvi Vapaaar Private Limited
114. M/s. Sunnart Vapaaar Private Limited
115. M/s. Sunshine Barter Private Limited
116. M/s. Superior Complex Private Limited
117. M/s. Superior Hirse Private Limited
118. M/s. Surdhuani Advisory Private Limited
119. M/s. Sursarita Advisory Services Private Limited
120. M/s. Sursarita Consultants Private Limited
121. M/s. Swastik Barter Private Limited
122. M/s. Terapanth Consultancy Services Private Limited
123. M/s. Timeless Realstate Private Limited
124. M/s. Toppen Vapaaar Private Limited
125. M/s. Vidhata Advisory Services Private Limited

SANJIV J. PAREKH  
REGISTERED ARCHITECT  
R.A. NO. F116-910253-41  
STRV/KK/DA/15/09039

SIGNATURE OF ARCHITECT

CERTIFICATE OF GEO-TECHNICAL ENGINEER

IT IS CERTIFIED THAT THE COMPREHENSIVE GEO-TECHNICAL REPORT ON SOIL INVESTIGATION HAS BEEN PREPARED BY ME FOR DESIGN AND CALCULATION OF THE FOUNDATION BY ANALYZING THE SOIL SAMPLES FOR ESTIMATING THE BEARING CAPACITY OF THE SOIL ON WHICH FOUNDATION OF THE STRUCTURE WILL BE CONSTRUCTED. I SHALL ALSO CHECK THE NATURE OF THE SOIL AFTER EXCAVATION AT SITE SO THAT FOUNDATION IS EXTENDED UP TO THE APPROPRIATE DEPTH THAT HAS BEEN PROPOSED IN THE GEO-TECHNICAL REPORT.

MONAL AGRAWAL  
Regt. Architect  
New Town Kolkata Development Authority  
Enrollment No. ANR2009101828

SIGNATURE OF GEO-TECHNICAL ENGINEER

SANJIB GUHA  
REG. ASSE. FIE/F115554-43  
REGISTERED ENGINEER  
STRV/KK/DA/15/02003

SIGNATURE OF STRUCTURAL REVIEWER

AGRAWAL & AGRAWAL  
BARRISTERS & ARCHITECTS  
SCALE: DATE: SHEET NO.: SHEET OF: CHECKED: DRAWN: DESIGNED: DATE: 11.02.16 17 OF 41 GLOP SHRA

Authorized Signatory

SIGNATURE OF OWNER

NOTE  
\* THIS WINDOW IS PROVIDED ONLY FOR ACCESS TO AC LEDGE FOR MAINTENANCE OF A.C.



