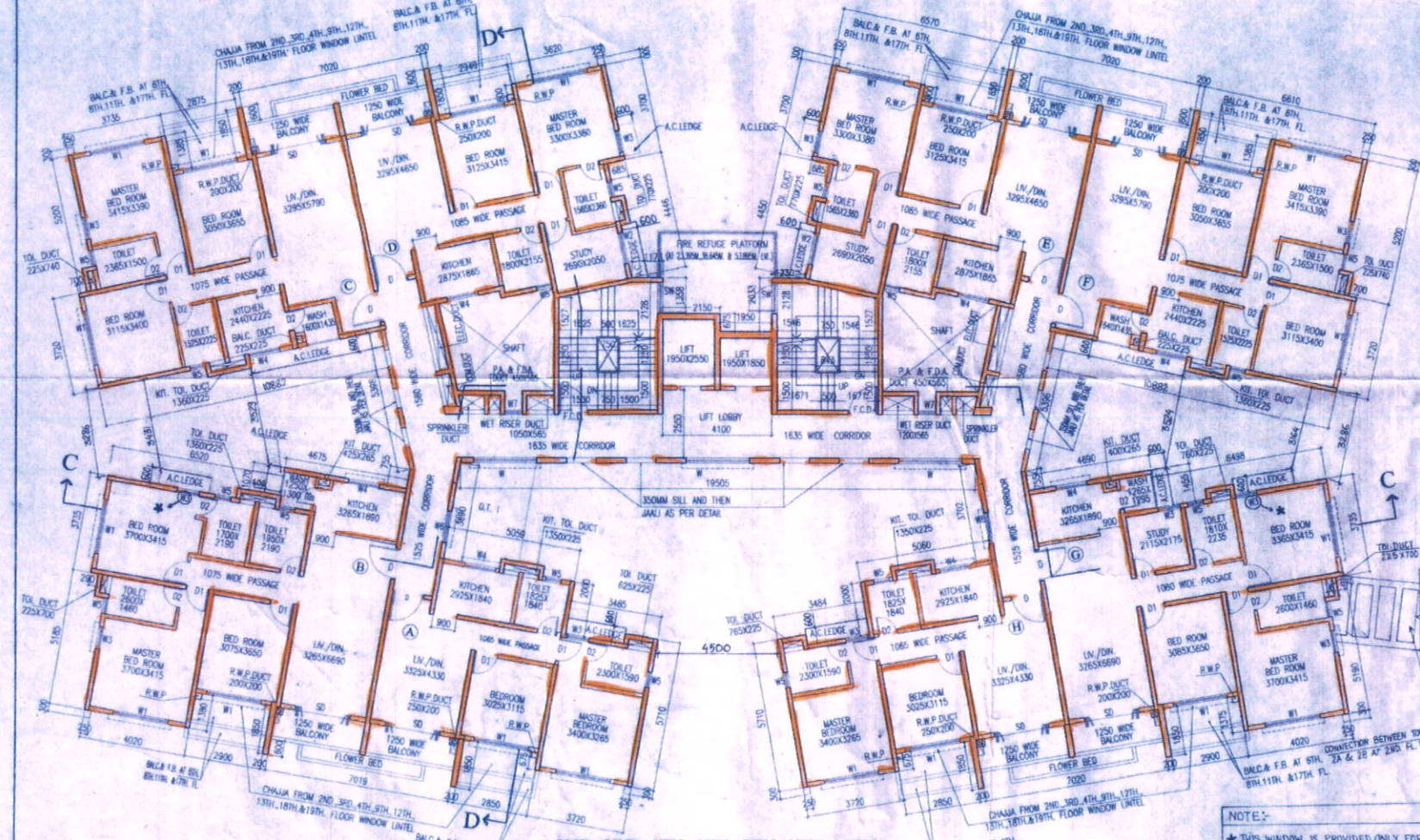


6TH, 8TH, 11TH & 17TH FLOOR PLAN

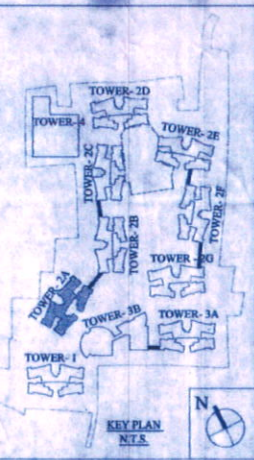


2ND, 3RD, 4TH, 5TH, 7TH, 9TH, 10TH, 12TH, 13TH, 18TH & 19TH FLOOR PLAN

NAME OF OWNER

NAME OF THE COMPANY

1. ALISHAN SUPPLY PRIVATE LIMITED
2. ADYVA REAL ESTATES PRIVATE LIMITED
3. ANCHOR VANDUYA PRIVATE LIMITED
4. ANTRATMA ADVISORY PRIVATE LIMITED
5. ANTRATMA DEALERS PRIVATE LIMITED
6. ANIKARAN SUPPLY PRIVATE LIMITED
7. ARABALIBIRSE PRIVATE LIMITED
8. ARCH VANDUYA PRIVATE LIMITED
9. ARPARA CONSULTANCY PRIVATE LIMITED
10. ARPARA TIE UP PRIVATE LIMITED
11. ARTLINE HOMES PRIVATE LIMITED
12. ARTLINE PROJECTS PRIVATE LIMITED
13. ARTLINE REAL ESTATE PVT. LTD.
14. AVERAGE COMPLEX PRIVATE LIMITED
15. AVERAGE HOUSING PRIVATE LIMITED
16. AVERAGE INRACON PRIVATE LIMITED
17. AVERAGE NERMAN PRIVATE LIMITED
18. AVERAGE PROJECTS PRIVATE LIMITED
19. BASUDEVI HOUSING PRIVATE LIMITED
20. BBSRDESI TIE UP PRIVATE LIMITED
21. BBSRDESI HOUSING PRIVATE LIMITED
22. BBSRDESI TIE UP PRIVATE LIMITED
23. BBSRDESI TIE UP PRIVATE LIMITED
24. BBSRDESI TIE UP PRIVATE LIMITED
25. CITY WINOVYAPAR PRIVATE LIMITED
26. CROSSWAY HEIGHTS PRIVATE LIMITED
27. CROSSWAY NERMAN PRIVATE LIMITED
28. DAVANTRI SUPPLIES PRIVATE LIMITED
29. DELTA VYAPAR PRIVATE LIMITED
30. DEVIANGANDESI PRIVATE LIMITED
31. DEVIANGANDESI PRIVATE LIMITED
32. DEVIANGANDESI PRIVATE LIMITED
33. DREAMLAND HOMES PRIVATE LIMITED
34. DREAMLAND HOMES PRIVATE LIMITED
35. GALADANTRONWAY PRIVATE LIMITED
36. GAGANBHILADCON PRIVATE LIMITED
37. GAGANBHILADCON PRIVATE LIMITED
38. GAGANBHILADCON PRIVATE LIMITED
39. GAGANBHILADCON PRIVATE LIMITED
40. GAGANBHILADCON PRIVATE LIMITED
41. GAGANBHILADCON PRIVATE LIMITED
42. GAGANBHILADCON PRIVATE LIMITED
43. GAGANBHILADCON PRIVATE LIMITED
44. GAGANBHILADCON PRIVATE LIMITED
45. GANESH TRACOM PRIVATE LIMITED
46. GANESH TRACOM PRIVATE LIMITED
47. GANESH TRACOM PRIVATE LIMITED
48. GUIDANCE VYAPAR PRIVATE LIMITED
49. GUIDANCE VYAPAR PRIVATE LIMITED
50. HANBANG TIE UP PRIVATE LIMITED
51. INDVARTACOM PRIVATE LIMITED
52. JAINENDRA DISTRIBUTORS PRIVATE LIMITED
53. JAINENDRA MARKETING PRIVATE LIMITED
54. JAINENDRA MARKETING PRIVATE LIMITED
55. JALDHAM ADVISORY PRIVATE LIMITED
56. JALDHAM TIE UP PRIVATE LIMITED
57. JALDHAM TIE UP PRIVATE LIMITED
58. JALDHAM TIE UP PRIVATE LIMITED
59. JALDHAM TIE UP PRIVATE LIMITED
60. JALDHAM TIE UP PRIVATE LIMITED
61. KALAKRITI ENCLAVE PRIVATE LIMITED
62. KALAKRITI HOMES PRIVATE LIMITED
63. KALAKRITI HOMES PRIVATE LIMITED
64. KALAKRITI HOMES PRIVATE LIMITED
65. KALAKRITI REALTY PRIVATE LIMITED
66. KALAKRITI REALTY PRIVATE LIMITED
67. KALAKRITI REALTY PRIVATE LIMITED
68. KALAKRITI REALTY PRIVATE LIMITED
69. KALAKRITI REALTY PRIVATE LIMITED
70. KALAKRITI REALTY PRIVATE LIMITED
71. KALAKRITI REALTY PRIVATE LIMITED
72. KALAKRITI REALTY PRIVATE LIMITED
73. KALAKRITI REALTY PRIVATE LIMITED
74. KALAKRITI REALTY PRIVATE LIMITED
75. KALAKRITI REALTY PRIVATE LIMITED
76. KALAKRITI REALTY PRIVATE LIMITED
77. KALAKRITI REALTY PRIVATE LIMITED
78. KALAKRITI REALTY PRIVATE LIMITED
79. KALAKRITI REALTY PRIVATE LIMITED
80. KALAKRITI REALTY PRIVATE LIMITED
81. KALAKRITI REALTY PRIVATE LIMITED
82. KALAKRITI REALTY PRIVATE LIMITED
83. KALAKRITI REALTY PRIVATE LIMITED
84. KALAKRITI REALTY PRIVATE LIMITED
85. KALAKRITI REALTY PRIVATE LIMITED
86. KALAKRITI REALTY PRIVATE LIMITED
87. KALAKRITI REALTY PRIVATE LIMITED
88. KALAKRITI REALTY PRIVATE LIMITED
89. KALAKRITI REALTY PRIVATE LIMITED
90. KALAKRITI REALTY PRIVATE LIMITED
91. KALAKRITI REALTY PRIVATE LIMITED
92. KALAKRITI REALTY PRIVATE LIMITED
93. KALAKRITI REALTY PRIVATE LIMITED
94. KALAKRITI REALTY PRIVATE LIMITED
95. KALAKRITI REALTY PRIVATE LIMITED
96. KALAKRITI REALTY PRIVATE LIMITED
97. KALAKRITI REALTY PRIVATE LIMITED
98. KALAKRITI REALTY PRIVATE LIMITED
99. KALAKRITI REALTY PRIVATE LIMITED
100. KALAKRITI REALTY PRIVATE LIMITED



SCHEDULE OF DOORS & WINDOWS

NO.	SILL	LINTEL	SIZE
D	2150	2150	1200 X 2150
D1	2150	2150	800 X 2150
D1a	2300	2300	200 X 2000
D2	2150	2150	750 X 2150
D2a	2150	2150	700 X 2150
D3	2150	2150	1000 X 2150
DW	2400	2400	2085 X 2400
DW1	2400	2400	2345 X 2400
SD	2150	2150	2100 X 2150
SD1	2150	2150	1500 X 2150
F.C.D	2150	2150	1125 X 2150
F.C.D1	2150	2150	1185 X 2150
W	350	2150	2400 X 1850
W1	350	2150	2100 X 1850
W2	350	2150	1200 X 1850
W3	350	2150	850 X 1850
W4	1100	2150	1200 X 1000
W5	1250	2150	600 X 900
W6	350	2150	1200 X 1400
W7	750	2150	700 X 1800
SW	750	2450	1198 X 1700

CERTIFICATE OF STRUCTURAL ENGINEER

CERTIFY THAT THE STRUCTURAL DRAWING AND DESIGN OF BOTH THE FOUNDATION AND SUPERSTRUCTURE OF THE BUILDING / BUILDINGS HAS BEEN MADE CONSIDERING THE SOIL TEST REPORT AS PER THE RULES AND REGULATIONS MADE UNDER THE ACT AND ALSO CONSIDERING ALL POSSIBLE LOADS, SEISMIC LOAD AND THE MOMENTS GENERATED BY THE PROPOSED STRUCTURE AS PER THE BUREAU OF INDIAN STANDARDS AND NATIONAL BUILDING CODE OF INDIA AND CERTIFIED THAT IT IS SAFE AND STABLE IN ALL RESPECTS AND THESE PROVISIONS SHALL BE ADHERED TO DURING THE CONSTRUCTION.

SANJIB J. GUHA
 AE (STRUCTURAL ENGINEER)
 R. E. F. No. 115854-51
 STRV/KDA/10/10038

SIGNATURE OF STRUCTURAL ENGR.

CERTIFICATE OF ARCHITECT

I CERTIFY THAT ALL THE ARCHITECTURAL DRAWINGS OF THE PROJECT AT R.S.DAG NOS. 474, 475, 476, 477, 478, 479, 480, 481, 482, 483, 484, 485, 486, 487, 488, 489, 490, 491, 492, 493, 494, 495, 496, 497, 498, 499, 500, 501, 502, 503, 504, 505, 506, 507, 508, 509, 510, 511, 512, 513, 514, 515, 516, 517, 518, 519, 520, 521, 522, 523, 524, 525, 526, 527, 528, 529, 530, 531, 532, 533, 534, 535, 536, 537, 538, 539, 540, 541, 542, 543, 544, 545, 546, 547, 548, 549, 550, 551, 552, 553, 554, 555, 556, 557, 558, 559, 560, 561, 562, 563, 564, 565, 566, 567, 568, 569, 570, 571, 572, 573, 574, 575, 576, 577, 578, 579, 580, 581, 582, 583, 584, 585, 586, 587, 588, 589, 590, 591, 592, 593, 594, 595, 596, 597, 598, 599, 600, 601, 602, 603, 604, 605, 606, 607, 608, 609, 610, 611, 612, 613, 614, 615, 616, 617, 618, 619, 620, 621, 622, 623, 624, 625, 626, 627, 628, 629, 630, 631, 632, 633, 634, 635, 636, 637, 638, 639, 640, 641, 642, 643, 644, 645, 646, 647, 648, 649, 650, 651, 652, 653, 654, 655, 656, 657, 658, 659, 660, 661, 662, 663, 664, 665, 666, 667, 668, 669, 670, 671, 672, 673, 674, 675, 676, 677, 678, 679, 680, 681, 682, 683, 684, 685, 686, 687, 688, 689, 690, 691, 692, 693, 694, 695, 696, 697, 698, 699, 700, 701, 702, 703, 704, 705, 706, 707, 708, 709, 710, 711, 712, 713, 714, 715, 716, 717, 718, 719, 720, 721, 722, 723, 724, 725, 726, 727, 728, 729, 730, 731, 732, 733, 734, 735, 736, 737, 738, 739, 740, 741, 742, 743, 744, 745, 746, 747, 748, 749, 750, 751, 752, 753, 754, 755, 756, 757, 758, 759, 760, 761, 762, 763, 764, 765, 766, 767, 768, 769, 770, 771, 772, 773, 774, 775, 776, 777, 778, 779, 780, 781, 782, 783, 784, 785, 786, 787, 788, 789, 790, 791, 792, 793, 794, 795, 796, 797, 798, 799, 800, 801, 802, 803, 804, 805, 806, 807, 808, 809, 810, 811, 812, 813, 814, 815, 816, 817, 818, 819, 820, 821, 822, 823, 824, 825, 826, 827, 828, 829, 830, 831, 832, 833, 834, 835, 836, 837, 838, 839, 840, 841, 842, 843, 844, 845, 846, 847, 848, 849, 850, 851, 852, 853, 854, 855, 856, 857, 858, 859, 860, 861, 862, 863, 864, 865, 866, 867, 868, 869, 870, 871, 872, 873, 874, 875, 876, 877, 878, 879, 880, 881, 882, 883, 884, 885, 886, 887, 888, 889, 890, 891, 892, 893, 894, 895, 896, 897, 898, 899, 900, 901, 902, 903, 904, 905, 906, 907, 908, 909, 910, 911, 912, 913, 914, 915, 916, 917, 918, 919, 920, 921, 922, 923, 924, 925, 926, 927, 928, 929, 930, 931, 932, 933, 934, 935, 936, 937, 938, 939, 940, 941, 942, 943, 944, 945, 946, 947, 948, 949, 950, 951, 952, 953, 954, 955, 956, 957, 958, 959, 960, 961, 962, 963, 964, 965, 966, 967, 968, 969, 970, 971, 972, 973, 974, 975, 976, 977, 978, 979, 980, 981, 982, 983, 984, 985, 986, 987, 988, 989, 990, 991, 992, 993, 994, 995, 996, 997, 998, 999, 1000.

M. AGARWAL
 Regd. Architect
 New Town Kolkata Development Authority
 Enrolment No. AC/10/24/100000

SIGNATURE OF ARCHITECT

CERTIFICATE OF GEO-TECHNICAL ENGINEER

IT IS CERTIFIED THAT THE COMPREHENSIVE GEO-TECHNICAL REPORT ON SOIL INVESTIGATION HAS BEEN PREPARED BY ME FOR DESIGN AND CALCULATION OF THE FOUNDATION BY ANALYZING THE SOIL SAMPLES FOR ESTIMATING THE BEARING CAPACITY OF THE SOIL ON WHICH FOUNDATION OF THE STRUCTURE WILL BE CONSTRUCTED. I SHALL ALSO CHECK THE NATURE OF THE SOIL AFTER EXCAVATION AT SITE SO THAT FOUNDATION IS EXTENDED UP TO THE APPROPRIATE DEPTH THAT HAS BEEN PROPOSED IN THE GEO-TECHNICAL REPORT.

SUNIL KUMAR MITRA, S.E. CIVIL
 GEO-TECHNICAL ENGINEER
 ENROLMENT NO. GTE/10/24/100000

SIGNATURE OF GEO-TECHNICAL ENGINEER

Subir Ranjan Datta
 Regd. Town Planner
 New Town Kolkata Development Authority
 Enrolment No. TPER/KDA/10/10038

SIGNATURE OF TOWN PLANNER OR URBAN DESIGNER

SANJIB GUHA
 BSC, BCE, FIE-115854-51
 CHARTERED ENGINEER
 STRV/KDA/10/10038

SIGNATURE OF STRUCTURAL REVIEWER

TITLE: TYP. 2ND, 3RD, 4TH, 5TH, 7TH, 9TH, 10TH, 12TH, 13TH, 18TH & 19TH FLOOR & TYP. 6TH, 8TH, 11TH & 17TH FLOOR PLAN (TOWER - 2A)

PROJECT: REVISED (G-I), (B+G-VII) AND (G+XIX) STORED RESIDENTIAL BUILDINGS AT MOUZA - BHATENDA, R.S.DAG NOS. 474, 475, 476, 477, 478, 479, 480, 481, 482, 483, 484, 485, 486, 487, 488, 489, 490, 491, 492, 493, 494, 495, 496, 497, 498, 499, 500, 501, 502, 503, 504, 505, 506, 507, 508, 509, 510, 511, 512, 513, 514, 515, 516, 517, 518, 519, 520, 521, 522, 523, 524, 525, 526, 527, 528, 529, 530, 531, 532, 533, 534, 535, 536, 537, 538, 539, 540, 541, 542, 543, 544, 545, 546, 547, 548, 549, 550, 551, 552, 553, 554, 555, 556, 557, 558, 559, 560, 561, 562, 563, 564, 565, 566, 567, 568, 569, 570, 571, 572, 573, 574, 575, 576, 577, 578, 579, 580, 581, 582, 583, 584, 585, 586, 587, 588, 589, 590, 591, 592, 593, 594, 595, 596, 597, 598, 599, 600, 601, 602, 603, 604, 605, 606, 607, 608, 609, 610, 611, 612, 613, 614, 615, 616, 617, 618, 619, 620, 621, 622, 623, 624, 625, 626, 627, 628, 629, 630, 631, 632, 633, 634, 635, 636, 637, 638, 639, 640, 641, 642, 643, 644, 645, 646, 647, 648, 649, 650, 651, 652, 653, 654, 655, 656, 657, 658, 659, 660, 661, 662, 663, 664, 665, 666, 667, 668, 669, 670, 671, 672, 673, 674, 675, 676, 677, 678, 679, 680, 681, 682, 683, 684, 685, 686, 687, 688, 689, 690, 691, 692, 693, 694, 695, 696, 697, 698, 699, 700, 701, 702, 703, 704, 705, 706, 707, 708, 709, 710, 711, 712, 713, 714, 715, 716, 717, 718, 719, 720, 721, 722, 723, 724, 725, 726, 727, 728, 729, 730, 731, 732, 733, 734, 735, 736, 737, 738, 739, 740, 741, 742, 743, 744, 745, 746, 747, 748, 749, 750, 751, 752, 753, 754, 755, 756, 757, 758, 759, 760, 761, 762, 763, 764, 765, 766, 767, 768, 769, 770, 771, 772, 773, 774, 775, 776, 777, 778, 779, 780, 781, 782, 783, 784, 785, 786, 787, 788, 789, 790, 791, 792, 793, 794, 795, 796, 797, 798, 799, 800, 801, 802, 803, 804, 805, 806, 807, 808, 809, 810, 811, 812, 813, 814, 815, 816, 817, 818, 819, 820, 821, 822, 823, 824, 825, 826, 827, 828, 829, 830, 831, 832, 833, 834, 835, 836, 837, 838, 839, 840, 841, 842, 843, 844, 845, 846, 847, 848, 849, 850, 851, 852, 853, 854, 855, 856, 857, 858, 859, 860, 861, 862, 863, 864, 865, 866, 867, 868, 869, 870, 871, 872, 873, 874, 875, 876, 877, 878, 879, 880, 881, 882, 883, 884, 885, 886, 887, 888, 889, 890, 891, 892, 893, 894, 895, 896, 897, 898, 899, 900, 901, 902, 903, 904, 905, 906, 907, 908, 909, 910, 911, 912, 913, 914, 915, 916, 917, 918, 919, 920, 921, 922, 923, 924, 925, 926, 927, 928, 929, 930, 931, 932, 933, 934, 935, 936, 937, 938, 939, 940, 941, 942, 943, 944, 945, 946, 947, 948, 949, 950, 951, 952, 953, 954, 955, 956, 957, 958, 959, 960, 961, 962, 963, 964, 965, 966, 967, 968, 969, 970, 971, 972, 973, 974, 975, 976, 977, 978, 979, 980, 981, 982, 983, 984, 985, 986, 987, 988, 989, 990, 991, 992, 993, 994, 995, 996, 997, 998, 999, 1000.

AGRAWAL & AGRAWAL

SCALE	DATE	SHEET NO.	DRAWN	CHECKED
1:100	08.02.18	12 OF 41	SANJIB GUHA	SANJIB GUHA

Authorized Signatory
 SIGNATURE OF OWNER

NEW TOWN KUALA KEMPAS DEVELOPMENT AUTHORITY
SUKKIT CHATTERJEE
CHIEF ARCHITECT

NEW TOWN KUALA KEMPAS DEVELOPMENT AUTHORITY
Assistant Architect
SUKKIT CHATTERJEE
CHIEF ARCHITECT

NEW TOWN KUALA KEMPAS DEVELOPMENT AUTHORITY
No Objection Certificate for
Sanction of Building Plans for Construction Purpose
Memo No. 2622 (3) / KKB/2014
Date: 29.07.2018

STRUCTURAL DRAWINGS, STRUCTURAL
DESIGN CALCULATIONS & SOIL TEST
REPORT ARE NOT CHECKED AND KEPT
AS IS. ENGINEER HAS TO BE RESPONSIBLE FOR THE
DESIGN. THE NCC HAS BEEN ISSUED ON THE BASIS OF
FOR RECORDS ONLY.
NEW TOWN KUALA KEMPAS DEVELOPMENT AUTHORITY
SUKKIT CHATTERJEE
CHIEF ARCHITECT

Building Particulars Proposed: 5+11 (B) (G+1) all (G+1) 5+11
No. of floors: 5+11 (B) (G+1) all (G+1) 5+11
No. of floors: 5+11 (B) (G+1) all (G+1) 5+11

ARCHITECT: Mohd. A. Ghaffar
Enrollment No: 1244 / KKB / 10 / 0020
CIVIL / STRUCTURAL ENGINEER:
S. K. J. I. P. R. K. H.
Enrollment No: 5156 / KKB / 10 / 0020
S. H. P. M. L. K. M. I. T. A.
Enrollment No: 4150 / KKB / 10 / 0010
TOWN PLANNER / ORGAN DESIGNER:
S. H. P. M. L. K. M. I. T. A.
Enrollment No: 1000 / KKB / 10 / 0000
STRUCTURAL REVIEWER:
S. A. D. S. I. Q. A. U. M.
Enrollment No: 5122 / KKB / 10 / 0012