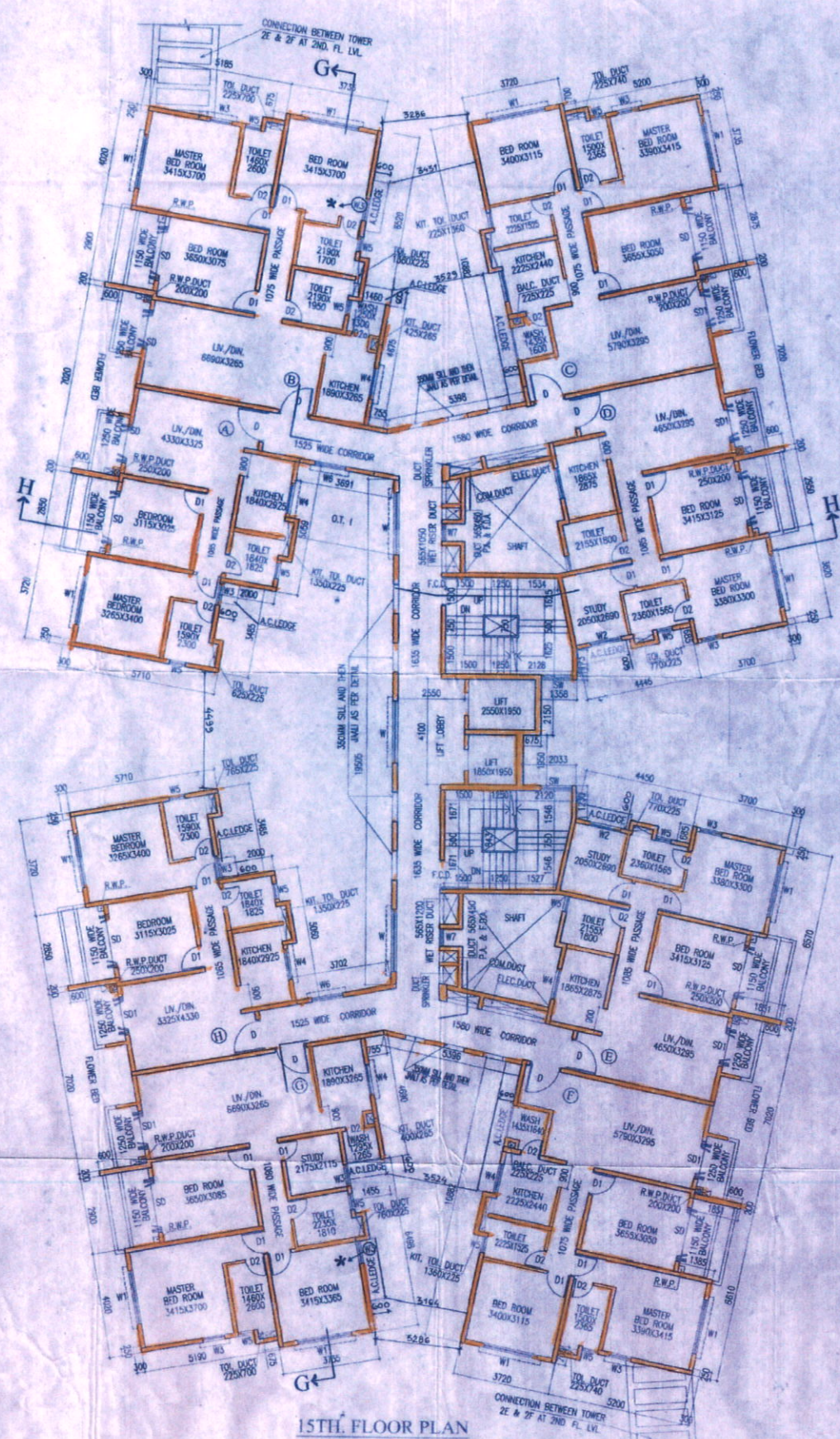
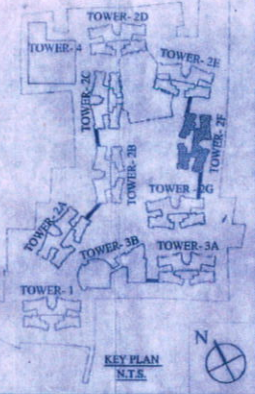


14TH & 16TH. FLOOR PLAN



15TH. FLOOR PLAN

**NOTE**  
 \* THIS WINDOW IS PROVIDED ONLY FOR ACCESS TO A.C. LEDGE FOR MAINTENANCE OF A.C.



SCHEDULE OF DOORS & WINDOWS

NO.	SILL	LINTEL	SIZE
D	-	2150	1200 X 2150
D1	-	2150	800 X 2150
D1a	250	2300	800 X 2050
D2	-	2150	750 X 2150
D2a	-	2150	700 X 2150
D3	-	2150	1000 X 2150
DW	-	2400	2600 X 2400
DW1	-	2400	2345 X 2400
SD	-	2150	2100 X 2150
SD1	-	2150	1500 X 2150
F.C.D	-	2150	1125 X 2150
F.C.D1	-	2150	1188 X 2150
W	350	2150	2400 X 1800
W1	350	2150	2100 X 1800
W2	350	2150	1200 X 1800
W3	350	2150	850 X 1800
W4	1100	2150	1200 X 1050
W5	1250	2150	800 X 900
W6	350	2150	1200 X 1400
W7	750	2350	750 X 1400
SW	750	2450	1168 X 1700

**NAME OF OWNER**

**NAME OF THE COMPANY**

1. M/s. Aya Real Estates Private Limited
2. M/s. Aishan Supply Private Limited
3. M/s. Anchor Vaniya Private Limited
4. M/s. Antrama Advisory Private Limited
5. M/s. Antrama Dealers Private Limited
6. M/s. Anubaran Supply Private Limited
7. M/s. Aravali Hirje Private Limited
8. M/s. Arch Vaniya Private Limited
9. M/s. Arpana Consultancy Private Limited
10. M/s. Arpana Tie Up Private Limited
11. M/s. Arshin Homes Private Limited
12. M/s. Arshin Projects Private Limited
13. M/s. Arshin Realstate Private Limited
14. M/s. Average Complex Private Limited
15. M/s. Average Housing Private Limited
16. M/s. Average Infracon Private Limited
17. M/s. Average Nirman Private Limited
18. M/s. Average Projects Private Limited
19. M/s. Basulew Enclave Private Limited
20. M/s. Bessher Housing Private Limited
21. M/s. Bluebird Tie Up Private Limited
22. M/s. Booster Heights Private Limited
23. M/s. Booster Hirje Private Limited
24. M/s. Brijbhumi Agents Private Limited
25. M/s. Brijbhumi Tie Up Private Limited
26. M/s. Citywings Vyapar Private Limited
27. M/s. Crossway Heights Private Limited
28. M/s. Crossway Nirman Private Limited
29. M/s. Deynidi Suppliers Private Limited
30. M/s. Disha Vyapar Private Limited
31. M/s. Dhanganja Hirje Private Limited
32. M/s. Dhanganja Infracon Private Limited
33. M/s. Dhanganja Realty Private Limited
34. M/s. Dhanganja Residency Private Limited
35. M/s. Dreamland Hirje Private Limited
36. M/s. Dreamland Nirman Private Limited
37. M/s. Gajbhumi Vaniya Private Limited
38. M/s. Gajbhumi Vyapar Private Limited
39. M/s. Gajbhumi Infracon Private Limited
40. M/s. Gajbhumi Nirman Private Limited
41. M/s. Gajbhumi Realty Private Limited
42. M/s. Gajbhumi Enclave Private Limited
43. M/s. Gajbhumi Homes Private Limited
44. M/s. Gajbhumi Infracon Private Limited
45. M/s. Gajbhumi Nirman Private Limited
46. M/s. Gajbhumi Projects Private Limited
47. M/s. Gajbhumi Realstate Private Limited
48. M/s. Ganesh Traccon Private Limited
49. M/s. Ganeshwani Promoters Private Limited
50. M/s. Green Top Nirman Private Limited
51. M/s. Guidance Vyapar Private Limited
52. M/s. Gullmarg Vyapar Private Limited
53. M/s. Hanareng Tie Up Private Limited
54. M/s. Indvar Traccon Private Limited
55. M/s. Jaajendra Distributors Private Limited
56. M/s. Jaajendra Marketing Private Limited
57. M/s. Jaajendra Merchants Private Limited
58. M/s. Jaidham Advisory Private Limited
59. M/s. Jaidham Tie Up Private Limited
60. M/s. Jhilmil Sales Private Limited
61. M/s. Jhilmil Vyapar Private Limited
62. M/s. Jhilmil Merchants Private Limited
63. M/s. Jhilmil Marketing Private Limited
64. M/s. Kalakoti Enclave Private Limited
65. M/s. Kalakoti Homes Private Limited
66. M/s. Kalakoti Housing Private Limited
67. M/s. Kalakoti Properties Private Limited
68. M/s. Kalakoti Realty Private Limited
69. M/s. Kamayadi Consultants Private Limited
70. M/s. Kamayadi Enclave Private Limited
71. M/s. Kamayadi Hirje Private Limited
72. M/s. Linkrose Constructors Private Limited
73. M/s. Linkrose Housing Private Limited
74. M/s. Linkrose Residency Private Limited
75. M/s. Manohar Dealer Private Limited
76. M/s. Manohar Enclave Private Limited
77. M/s. Matrix Sales Private Limited
78. M/s. Matrix Barter Private Limited
79. M/s. Moonlife Constructors Private Limited
80. M/s. Moonlife Nirman Private Limited
81. M/s. Moonlife Residency Private Limited
82. M/s. Mithal Advisory Private Limited
83. M/s. Navanagar Merchants Private Limited
84. M/s. Original Realty Private Limited
85. M/s. Panchang Supply Private Limited
86. M/s. Pawanputra Barter Private Limited
87. M/s. Pawanputra Sales Private Limited
88. M/s. Prabakar Barter Private Limited
89. M/s. Prajapati Commercial Private Limited
90. M/s. Prajapati Dealer Private Limited
91. M/s. Premnagar Advisory Private Limited
92. M/s. Premnagar Tie Up Private Limited
93. M/s. Prima Naga Marketing Private Limited
94. M/s. Radial Hooping Private Limited
95. M/s. Radial Residency Private Limited
96. M/s. Rimjhim Commodities Private Limited
97. M/s. Rojeshwari Distributors Private Limited
98. M/s. Rosemary Tie Up Private Limited
99. M/s. Sanyal Vaniya Private Limited
100. M/s. Sanyal Advisory Services Private Limited
101. M/s. Sanjivani Vaniya Private Limited
102. M/s. Sargam Vyapar Private Limited
103. M/s. Sawarg Vaniya Private Limited
104. M/s. Shivasthal Dealers Private Limited
105. M/s. Shivasthal Sales Private Limited
106. M/s. Siddha Style Barter Private Limited
107. M/s. Sidhant Suppliers Private Limited
108. M/s. Skyline Vaniya Private Limited
109. M/s. Skyline Merchants Private Limited
110. M/s. Soanant Suppliers Private Limited
111. M/s. Soanant Vyapar Private Limited
112. M/s. Soyle Merchants Private Limited
113. M/s. Sukhjit Vyapar Private Limited
114. M/s. Sunmart Vyapar Private Limited
115. M/s. Sunshine Barter Private Limited
116. M/s. Superior Complex Private Limited
117. M/s. Superior Hirje Private Limited
118. M/s. Sushruthi Distributors Private Limited
119. M/s. Sursarita Advisory Services Private Limited
120. M/s. Sursarita Consultants Private Limited
121. M/s. Swastik Barter Private Limited
122. M/s. Teerapath Consultancy Services Private Limited
123. M/s. Timeless Realstate Private Limited
124. M/s. Toptan Vyapar Private Limited
125. M/s. Vidhata Advisory Services Private Limited

**CERTIFICATE OF STRUCTURAL ENGINEER**  
 I CERTIFY THAT THE STRUCTURAL DRAWING AND DESIGN OF BOTH THE FOUNDATION AND SUPERSTRUCTURE OF THE BUILDING / BUILDINGS HAS BEEN MADE CONSIDERING THE SOIL TEST REPORT, AS PER THE RULES AND REGULATIONS MADE UNDER THE ACT AND ALSO CONSIDERING ALL POSSIBLE LOADS, SEISMIC LOAD AND THE MOMENTS GENERATED BY THE PROPOSED STRUCTURE AS PER THE BUREAU OF INDIAN STANDARD AND NATIONAL BUILDING CODE OF INDIA AND CERTIFIED THAT IT IS SAFE AND STABLE BY ALL RESPECT AND THESE PROVISIONS SHALL BE ADHERED TO DURING THE CONSTRUCTION.

SANJIV J. PAREKH  
 M.E. (STRUCTURAL), M.E. (CONSTR. ENGRG.)  
 R. E. (REG. NO. 4152-4)  
 STRV/NKA/10/0003

**SIGNATURE OF STRUCTURAL ENGG.**

**CERTIFICATE OF ARCHITECT**

I CERTIFY THAT ALL THE ARCHITECTURAL DRAWINGS OF THE PROJECT AT R.S.DAG NOS. 471, 474, 475, 476, 477, 478, 479, 480, 481(P), 483, 485, 490, 491, 492, 493, 494, 495, 496, 497, 499, 500, 501(P), 502(P), 503(P), 504(P), 506(P), 507(P), 508(P), 520(P), 531, 532, 533, 534, 535, 536, 537(P), 538(P), 539, 540, 541, 542, 543, 544, 545, 546, 547, 548, 549, 550, 551, 552, 553, 554, 555, 556, 557, 558, 559, 560, 561, 562, 563, 564, 565, 566, 567, 568, 569, 570, 571, 572, 573, 574, 575, 576, 577, 578, 579, 580, 581, 582, 583, 584, 585, 586, 587, 588, 589, 590, 591, 592, 593, 594, 595, 596, 597, 598, 599, 600, 601, 602, 603, 604, 605, 606, 607, 608, 609, 610, 611, 612, 613, 614, 615, 616, 617, 618, 619, 620, 621, 622, 623, 624, 625, 626, 627, 628, 629, 630, 631, 632, 633, 634, 635, 636, 637, 638, 639, 640, 641, 642, 643, 644, 645, 646, 647, 648, 649, 650, 651, 652, 653, 654, 655, 656, 657, 658, 659, 660, 661, 662, 663, 664, 665, 666, 667, 668, 669, 670, 671, 672, 673, 674, 675, 676, 677, 678, 679, 680, 681, 682, 683, 684, 685, 686, 687, 688, 689, 690, 691, 692, 693, 694, 695, 696, 697, 698, 699, 700, 701, 702, 703, 704, 705, 706, 707, 708, 709, 710, 711, 712, 713, 714, 715, 716, 717, 718, 719, 720, 721, 722, 723, 724, 725, 726, 727, 728, 729, 730, 731, 732, 733, 734, 735, 736, 737, 738, 739, 740, 741, 742, 743, 744, 745, 746, 747, 748, 749, 750, 751, 752, 753, 754, 755, 756, 757, 758, 759, 760, 761, 762, 763, 764, 765, 766, 767, 768, 769, 770, 771, 772, 773, 774, 775, 776, 777, 778, 779, 780, 781, 782, 783, 784, 785, 786, 787, 788, 789, 790, 791, 792, 793, 794, 795, 796, 797, 798, 799, 800, 801, 802, 803, 804, 805, 806, 807, 808, 809, 810, 811, 812, 813, 814, 815, 816, 817, 818, 819, 820, 821, 822, 823, 824, 825, 826, 827, 828, 829, 830, 831, 832, 833, 834, 835, 836, 837, 838, 839, 840, 841, 842, 843, 844, 845, 846, 847, 848, 849, 850, 851, 852, 853, 854, 855, 856, 857, 858, 859, 860, 861, 862, 863, 864, 865, 866, 867, 868, 869, 870, 871, 872, 873, 874, 875, 876, 877, 878, 879, 880, 881, 882, 883, 884, 885, 886, 887, 888, 889, 890, 891, 892, 893, 894, 895, 896, 897, 898, 899, 900, 901, 902, 903, 904, 905, 906, 907, 908, 909, 910, 911, 912, 913, 914, 915, 916, 917, 918, 919, 920, 921, 922, 923, 924, 925, 926, 927, 928, 929, 930, 931, 932, 933, 934, 935, 936, 937, 938, 939, 940, 941, 942, 943, 944, 945, 946, 947, 948, 949, 950, 951, 952, 953, 954, 955, 956, 957, 958, 959, 960, 961, 962, 963, 964, 965, 966, 967, 968, 969, 970, 971, 972, 973, 974, 975, 976, 977, 978, 979, 980, 981, 982, 983, 984, 985, 986, 987, 988, 989, 990, 991, 992, 993, 994, 995, 996, 997, 998, 999, 1000.

H. Agrawal  
 M.B.A. (AGRI. ENGRG.)  
 REG. NO. 12345 (AGRI. ENGRG.)  
 STRV/NKA/10/0003

**SIGNATURE OF ARCHITECT**

**CERTIFICATE OF GEO-TECHNICAL ENGINEER**

IT IS CERTIFIED THAT THE COMPREHENSIVE GEO-TECHNICAL REPORT ON SOIL INVESTIGATION HAS BEEN PREPARED BY ME FOR DESIGN AND CALCULATION OF THE FOUNDATION BY ANALYZING THE SOIL SAMPLES FOR ESTIMATING THE BEARING CAPACITY OF THE SOIL ON WHICH FOUNDATION OF THE STRUCTURE WILL BE CONSTRUCTED. I SHALL ALSO CHECK THE NATURE OF THE SOIL AFTER EXCAVATION AT SITE SO THAT FOUNDATION IS EXTENDED UP TO FIRM APPROPRIATE DEPTH THAT HAS BEEN PROPOSED IN THE GEO-TECHNICAL REPORT.

Subir Ranjan Sarkar  
 Regd. Town Planner  
 New Town Kolkata Development Authority  
 Enrollment No.: TPER/NKA/10/0003

**SIGNATURE OF TOWN PLANNER OR URBAN DESIGNER**

SANJIV GUPTA  
 BSC. (CIVIL), P.E. (1-1055-9)  
 CHARTERED ENGINEER  
 STRV/NKA/10/0003

**SIGNATURE OF STRUCTURAL REVIEWER**

TITLE: TYP. (14TH, 15TH) FLOOR & 16TH FLOOR PLAN (TOWER-2P)

**PROJEC**

REVISED (H4), (H4+V1) AND (H4+V2) STORED RESIDENTIAL BUILDINGS AT MOULZA - BHATENDRA, R.S.DAG NOS. 471, 474, 475, 476, 477, 478, 479, 480, 481(P), 483, 485, 490, 491, 492, 493, 494, 495, 496, 497, 499, 500, 501(P), 502(P), 503(P), 504(P), 506(P), 507(P), 508(P), 520(P), 531, 532, 533, 534, 535, 536, 537(P), 538(P), 539, 540, 541, 542, 543, 544, 545, 546, 547, 548, 549, 550, 551, 552, 553, 554, 555, 556, 557, 558, 559, 560, 561, 562, 563, 564, 565, 566, 567, 568, 569, 570, 571, 572, 573, 574, 575, 576, 577, 578, 579, 580, 581, 582, 583, 584, 585, 586, 587, 588, 589, 590, 591, 592, 593, 594, 595, 596, 597, 598, 599, 600, 601, 602, 603, 604, 605, 606, 607, 608, 609, 610, 611, 612, 613, 614, 615, 616, 617, 618, 619, 620, 621, 622, 623, 624, 625, 626, 627, 628, 629, 630, 631, 632, 633, 634, 635, 636, 637, 638, 639, 640, 641, 642, 643, 644, 645, 646, 647, 648, 649, 650, 651, 652, 653, 654, 655, 656, 657, 658, 659, 660, 661, 662, 663, 664, 665, 666, 667, 668, 669, 670, 671, 672, 673, 674, 675, 676, 677, 678, 679, 680, 681, 682, 683, 684, 685, 686, 687, 688, 689, 690, 691, 692, 693, 694, 695, 696, 697, 698, 699, 700, 701, 702, 703, 704, 705, 706, 707, 708, 709, 710, 711, 712, 713, 714, 715, 716, 717, 718, 719, 720, 721, 722, 723, 724, 725, 726, 727, 728, 729, 730, 731, 732, 733, 734, 735, 736, 737, 738, 739, 740, 741, 742, 743, 744, 745, 746, 747, 748, 749, 750, 751, 752, 753, 754, 755, 756, 757, 758, 759, 760, 761, 762, 763, 764, 765, 766, 767, 768, 769, 770, 771, 772, 773, 774, 775, 776, 777, 778, 779, 780, 781, 782, 783, 784, 785, 786, 787, 788, 789, 790, 791, 792, 793, 794, 795, 796, 797, 798, 799, 800, 801, 802, 803, 804, 805, 806, 807, 808, 809, 810, 811, 812, 813, 814, 815, 816, 817, 818, 819, 820, 821, 822, 823, 824, 825, 826, 827, 828, 829, 830, 831, 832, 833, 834, 835, 836, 837, 838, 839, 840, 841, 842, 843, 844, 845, 846, 847, 848, 849, 850, 851, 852, 853, 854, 855, 856, 857, 858, 859, 860, 861, 862, 863, 864, 865, 866, 867, 868, 869, 870, 871, 872, 873, 874, 875, 876, 877, 878, 879, 880, 881, 882, 883, 884, 885, 886, 887, 888, 889, 890, 891, 892, 893, 894, 895, 896, 897, 898, 899, 900, 901, 902, 903, 904, 905, 906, 907, 908, 909, 910, 911, 912, 913, 914, 915, 916, 917, 918, 919, 920, 921, 922, 923, 924, 925, 926, 927, 928, 929, 930, 931, 932, 933, 934, 935, 936, 937, 938, 939, 940, 941, 942, 943, 944, 945, 946, 947, 948, 949, 950, 951, 952, 953, 954, 955, 956, 957, 958, 959, 960, 961, 962, 963, 964, 965, 966, 967, 968, 969, 970, 971, 972, 973, 974, 975, 976, 977, 978, 979, 980, 981, 982, 983, 984, 985, 986, 987, 988, 989, 990, 991, 992, 993, 994, 995, 996, 997, 998, 999, 1000.

**ARCHITECTS**

AGRAWAL & AGRAWAL	BAROIA	KOLKATA	DEALY	CHECKED
SCALE	DATE	SHEET NO.	DESK	SHAHA
1:100	06.12.16	25 OF 41	SURP	SHAHA

Authorized Signatory

SIGNATURE OF OWNER



