

GENERAL NOTES

1. ALL DIMENSIONS ARE IN MM.
2. ALL EXTERNAL WALLS 200 THK. & INTERNAL WALLS 100 THK.
3. ALL MASONRY WORK IS TO BE FINISHED BY CONCRETE MORTAR (1:3 & 1:4).
4. EXTERNAL FINISHES IS TO BE AS INTERNAL FINISHES.
5. ALL CONC. GRADE IS M20 (1:1.5).
6. IT IS STATED THAT THE CONSTRUCTION OF THE STRUCTURE IS TO BE IN ACCORDANCE WITH THE NATIONAL BUILDING REGULATIONS, 1980 & THE NATIONAL BUILDING ACT 1980. THE CONTRACTOR SHALL BE RESPONSIBLE FOR THE STRUCTURE BEING STABLE IN ALL RESPECTS.
7. THE CONTRACTOR SHALL BE RESPONSIBLE FOR THE STRUCTURE BEING STABLE IN ALL RESPECTS.
8. THE CONTRACTOR SHALL BE RESPONSIBLE FOR THE STRUCTURE BEING STABLE IN ALL RESPECTS.
9. THE CONTRACTOR SHALL BE RESPONSIBLE FOR THE STRUCTURE BEING STABLE IN ALL RESPECTS.
10. THE CONTRACTOR SHALL BE RESPONSIBLE FOR THE STRUCTURE BEING STABLE IN ALL RESPECTS.

CERTIFICATE OF ARCHITECT

THE L.B.A. HAS CERTIFIED ON THE PLAN THAT THE ARCHITECTURE IS IN ACCORDANCE WITH THE NATIONAL BUILDING REGULATIONS, 1980 & THE NATIONAL BUILDING ACT 1980. THE CONTRACTOR SHALL BE RESPONSIBLE FOR THE STRUCTURE BEING STABLE IN ALL RESPECTS.

Rajkumar Agastwal
 Architect
 Member of Council
 Architect No. CA/17940

CERTIFICATE OF STRUCTURAL ENGINEER

THE L.B.A. HAS CERTIFIED ON THE PLAN THAT THE STRUCTURE IS IN ACCORDANCE WITH THE NATIONAL BUILDING REGULATIONS, 1980 & THE NATIONAL BUILDING ACT 1980. THE CONTRACTOR SHALL BE RESPONSIBLE FOR THE STRUCTURE BEING STABLE IN ALL RESPECTS.

Utpal Sankar
 U.P. SANKAR
 P.L.C. & ASSOCIATES LTD.
 Structural Engineer
 Member of Council
 Structural Engineer No. SE/17940

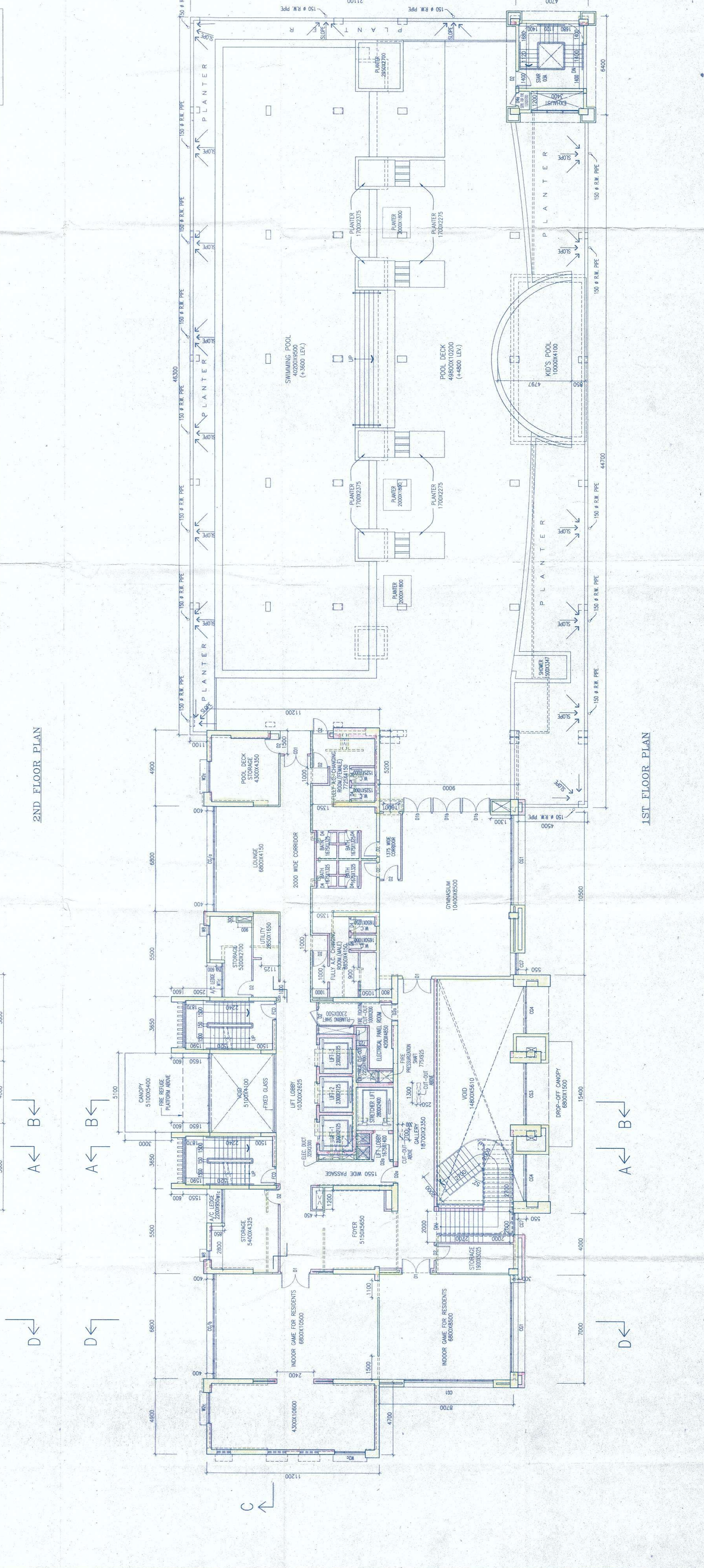
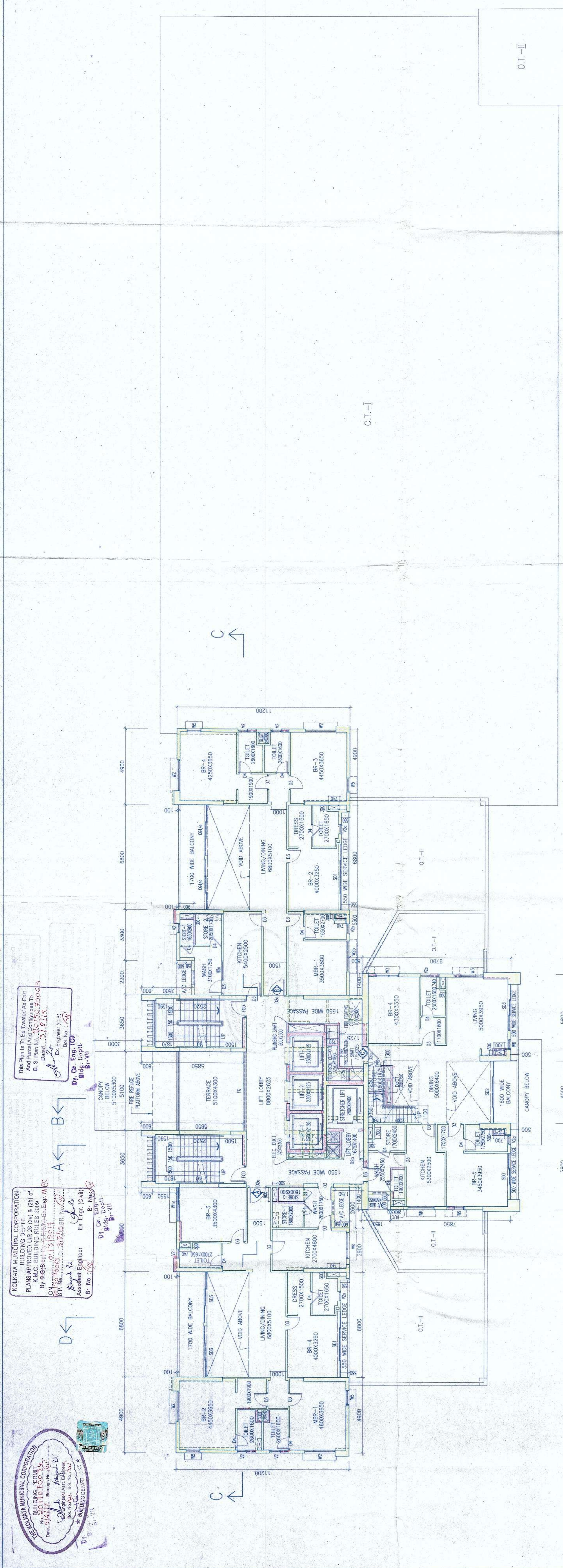
CERTIFICATE OF OWNER

1. I, ENDAVID ANANTH AND S.S. JAYASINGH CONSTITUTE THE BOARD OF DIRECTORS OF THE BUILDING SOCIETY. WE HEREBY CERTIFY THAT THE ABOVE STRUCTURE IS IN ACCORDANCE WITH THE NATIONAL BUILDING REGULATIONS, 1980 & THE NATIONAL BUILDING ACT 1980. THE CONTRACTOR SHALL BE RESPONSIBLE FOR THE STRUCTURE BEING STABLE IN ALL RESPECTS.

Utpal Sankar
 U.P. SANKAR
 P.L.C. & ASSOCIATES LTD.
 Structural Engineer
 Member of Council
 Structural Engineer No. SE/17940

SCHEDULE OF DOORS & WINDOWS

NO.	TYPE	HEIGHT	WIDTH	GLASS	AREA	NO.	TYPE	HEIGHT	WIDTH	GLASS	AREA
W1	W1	2150	450	2600	967.50	W1	W1	2150	450	2600	967.50
W2	W2	2150	450	2600	967.50	W2	W2	2150	450	2600	967.50
W3	W3	2150	450	2600	967.50	W3	W3	2150	450	2600	967.50
W4	W4	2150	450	2600	967.50	W4	W4	2150	450	2600	967.50
W5	W5	2150	450	2600	967.50	W5	W5	2150	450	2600	967.50
W6	W6	2150	450	2600	967.50	W6	W6	2150	450	2600	967.50
W7	W7	2150	450	2600	967.50	W7	W7	2150	450	2600	967.50
W8	W8	2150	450	2600	967.50	W8	W8	2150	450	2600	967.50
W9	W9	2150	450	2600	967.50	W9	W9	2150	450	2600	967.50
W10	W10	2150	450	2600	967.50	W10	W10	2150	450	2600	967.50
W11	W11	2150	450	2600	967.50	W11	W11	2150	450	2600	967.50
W12	W12	2150	450	2600	967.50	W12	W12	2150	450	2600	967.50
W13	W13	2150	450	2600	967.50	W13	W13	2150	450	2600	967.50
W14	W14	2150	450	2600	967.50	W14	W14	2150	450	2600	967.50
W15	W15	2150	450	2600	967.50	W15	W15	2150	450	2600	967.50
W16	W16	2150	450	2600	967.50	W16	W16	2150	450	2600	967.50
W17	W17	2150	450	2600	967.50	W17	W17	2150	450	2600	967.50
W18	W18	2150	450	2600	967.50	W18	W18	2150	450	2600	967.50
W19	W19	2150	450	2600	967.50	W19	W19	2150	450	2600	967.50
W20	W20	2150	450	2600	967.50	W20	W20	2150	450	2600	967.50
W21	W21	2150	450	2600	967.50	W21	W21	2150	450	2600	967.50
W22	W22	2150	450	2600	967.50	W22	W22	2150	450	2600	967.50
W23	W23	2150	450	2600	967.50	W23	W23	2150	450	2600	967.50
W24	W24	2150	450	2600	967.50	W24	W24	2150	450	2600	967.50
W25	W25	2150	450	2600	967.50	W25	W25	2150	450	2600	967.50
W26	W26	2150	450	2600	967.50	W26	W26	2150	450	2600	967.50
W27	W27	2150	450	2600	967.50	W27	W27	2150	450	2600	967.50
W28	W28	2150	450	2600	967.50	W28	W28	2150	450	2600	967.50
W29	W29	2150	450	2600	967.50	W29	W29	2150	450	2600	967.50
W30	W30	2150	450	2600	967.50	W30	W30	2150	450	2600	967.50
W31	W31	2150	450	2600	967.50	W31	W31	2150	450	2600	967.50
W32	W32	2150	450	2600	967.50	W32	W32	2150	450	2600	967.50
W33	W33	2150	450	2600	967.50	W33	W33	2150	450	2600	967.50
W34	W34	2150	450	2600	967.50	W34	W34	2150	450	2600	967.50
W35	W35	2150	450	2600	967.50	W35	W35	2150	450	2600	967.50
W36	W36	2150	450	2600	967.50	W36	W36	2150	450	2600	967.50
W37	W37	2150	450	2600	967.50	W37	W37	2150	450	2600	967.50
W38	W38	2150	450	2600	967.50	W38	W38	2150	450	2600	967.50
W39	W39	2150	450	2600	967.50	W39	W39	2150	450	2600	967.50
W40	W40	2150	450	2600	967.50	W40	W40	2150	450	2600	967.50
W41	W41	2150	450	2600	967.50	W41	W41	2150	450	2600	967.50
W42	W42	2150	450	2600	967.50	W42	W42	2150	450	2600	967.50
W43	W43	2150	450	2600	967.50	W43	W43	2150	450	2600	967.50
W44	W44	2150	450	2600	967.50	W44	W44	2150	450	2600	967.50
W45	W45	2150	450	2600	967.50	W45	W45	2150	450	2600	967.50
W46	W46	2150	450	2600	967.50	W46	W46	2150	450	2600	967.50
W47	W47	2150	450	2600	967.50	W47	W47	2150	450	2600	967.50
W48	W48	2150	450	2600	967.50	W48	W48	2150	450	2600	967.50
W49	W49	2150	450	2600	967.50	W49	W49	2150	450	2600	967.50
W50	W50	2150	450	2600	967.50	W50	W50	2150	450	2600	967.50
W51	W51	2150	450	2600	967.50	W51	W51	2150	450	2600	967.50
W52	W52	2150	450	2600	967.50	W52	W52	2150	450	2600	967.50
W53	W53	2150	450	2600	967.50	W53	W53	2150	450	2600	967.50
W54	W54	2150	450	2600	967.50	W54	W54	2150	450	2600	967.50
W55	W55	2150	450	2600	967.50	W55	W55	2150	450	2600	967.50
W56	W56	2150	450	2600	967.50	W56	W56	2150	450	2600	967.50
W57	W57	2150	450	2600	967.50	W57	W57	2150	450	2600	967.50
W58	W58	2150	450	2600	967.50	W58	W58	2150	450	2600	967.50
W59	W59	2150	450	2600	967.50	W59	W59	2150	450	2600	967.50
W60	W60	2150	450	2600	967.50	W60	W60	2150	450	2600	967.50
W61	W61	2150	450	2600	967.50	W61	W61	2150	450	2600	967.50
W62	W62	2150	450	2600	967.50	W62	W62	2150	450	2600	967.50
W63	W63	2150	450	2600	967.50	W63	W63	2150	450	2600	967.50
W64	W64	2150	450	2600	967.50	W64	W64	2150	450	2600	967.50
W65	W65	2150	450	2600	967.50	W65	W65	2150	450	2600	967.50
W66	W66	2150	450	2600	967.50	W66	W66	2150	450	2600	967.50
W67	W67	2150	450	2600	967.50	W67	W67	2150	450	2600	967.50
W68	W68	2150	450	2600	967.50	W68	W68	2150	450	2600	967.50
W69	W69	2150	450	2600	967.50	W69	W69	2150	450	2600	967.50
W70	W70	2150	450	2600	967.50	W70	W70	2150	450	2600	967.50
W71	W71	2150	450	2600	967.50	W71	W71	2150	450	2600	967.50
W72	W72	2150	450	2600	967.50	W72	W72	2150	450	2600	967.50
W73	W73	2150	450	2600	967.50	W73	W73	2150	450	2600	967.50
W74	W74	2150	450	2600	967.50	W74	W74	2150	450	2600	967.50
W75	W75	2150	450	2600	967.50	W75	W75	2150	450	2600	967.50
W76	W76	2150	450	2600	967.50	W76	W76	2150	450	2600	967.50
W77	W77	2150	450	2600	967.50	W77	W77	2150	450	2600	967.50
W78	W78	2150	450	2600	967.50	W78	W78	2150	450	2600	967.50
W79	W79	2150	450	2600	967.50	W79	W79	2150	450	2600	967.50
W80	W80	2150	450	2600	967.50	W80	W80	2150	450	2600	967.50
W81	W81	2150	450	2600	967.50	W81	W81	2150	450	2600	967.50
W82	W82	2150	450	2600	967.50	W82	W82	2150	450	2600	967.50
W83	W83	2150	450	2600	967.50	W83	W83	2150	450	2600	967.50
W84	W84	2150	450	2600	967.50	W84	W84	2150	450	2600	967.50
W85	W85	2150	450	2600	967.50	W85	W85	2150	450	2600	967.50
W86	W86	2150	450	2600	967.50	W86	W86	2150	450	2600	967.50
W87	W87	2150	450	2600	967.50	W87	W87	2150	450	2600	967.50
W88	W88	2150	450	2600	967.50	W88	W88	2150	450	2600	967.50
W89	W89	2150	450	2600	967.50	W89	W89	2150	450	2600	967.50
W90	W90	2150	450	2600	967.50	W90	W90	2150	450	2600	967.50
W91	W91	2150	450	2600	967.50	W91	W91	2150	450	2600	967.50
W92	W92	2150	450	2600	967.50	W92	W92	2150	450	2600	967.50
W93	W93	2150	450	2600	967.50	W93	W93	2150	450	2600	967.50
W94	W94	2150	450	2600	967.50	W94	W94	2150	450	2600	967.50
W95	W95	2150	450	2600	967.50	W95	W95	2150	450	2600	967.50
W96	W96	2150	450	2600	967.50	W96	W96	2150	450	2600	967.50
W97	W97	2150	450	2600	967.50	W97	W97	2150	450	2600	967.50
W98	W98	2150	450	2600	967.50	W98	W98	2150	450	2600	967.50
W99	W99	2150	450	2600	967.50	W99	W99	2150	450	2600	967.50
W100	W100	2150	450	2600	967.50	W100	W100	2150	450	2600	967.50



PARTY'S COPY

When for Water Supply arrangements including...
GIBALLI G. & O. N. Engineers
Supply and the attention obtained before
proceeding with the work is subject to the above
conditions.

No rain water pipe should be laid or
discharged on Road or Footpath.
The Borough Engineer's Office
and the attention obtained before
proceeding with the work is subject to the above
conditions.

A suitable pump has to be provided for
pumping untreated water for the distribution
to the flushing cisterns and urinals in case
of emergency water from street
main is not available.

SEWAGE TREATMENT PLANT
Approved by Mr. C. H. ...
The Building Committee

GREEN BUILDING
GREEN BUILDING
GREEN BUILDING



The water supply system shall be
beyond 3 months or after construction
of the building shall be provided as
stated forthwith by the K.M.C. at the
cost and risk of the owner.

RESIDENTIAL BUILDING

"INSTRUCTION SITE SHALL BE MAINTAINED
PREVENT MONITORING AS REQUIRED
DO NOT ALLOW COLLECTION & PARTICULARLY
LEFT WELLS, WATS, BASEMENT CHANGING SITES, OPEN
DRAINAGE SYSTEMS MUST BE LIMITED COMPETENT
TWICE A WEEK

APPROVED
Assistant Engineer (D)
BROOKLYN, N.Y.

Approved subject to Compliance
Schedule 1, 2, 3, 4, 5, 6, 7, 8, 9, 10, 11, 12, 13, 14, 15, 16, 17, 18, 19, 20, 21, 22, 23, 24, 25, 26, 27, 28, 29, 30, 31, 32, 33, 34, 35, 36, 37, 38, 39, 40, 41, 42, 43, 44, 45, 46, 47, 48, 49, 50, 51, 52, 53, 54, 55, 56, 57, 58, 59, 60, 61, 62, 63, 64, 65, 66, 67, 68, 69, 70, 71, 72, 73, 74, 75, 76, 77, 78, 79, 80, 81, 82, 83, 84, 85, 86, 87, 88, 89, 90, 91, 92, 93, 94, 95, 96, 97, 98, 99, 100

* Provisions for use of solar energy in the form of solar
heaters and for solar stills shall be provided as
required under Rule 107 of Building Regulations and
compliance certificate will not be issued in case of
violation without having such provision.

OFFICE OF THE RESIDENTIAL ENGINEER
KILKINNY MUNICIPAL CORPORATION

KILKINNY MUNICIPAL CORPORATION
PLANS APPROVED UNDER SECTION 3 OF THE
K.M.C. BUILDING RULES 2009
ON 20/11/11
By Mr. C. H. ...
Assistant Engineer
B. No. 107

This Plan is to be used only for the
B. S. Plan No. 107/2011
By Mr. C. H. ...
Assistant Engineer (D)
B. No. 107