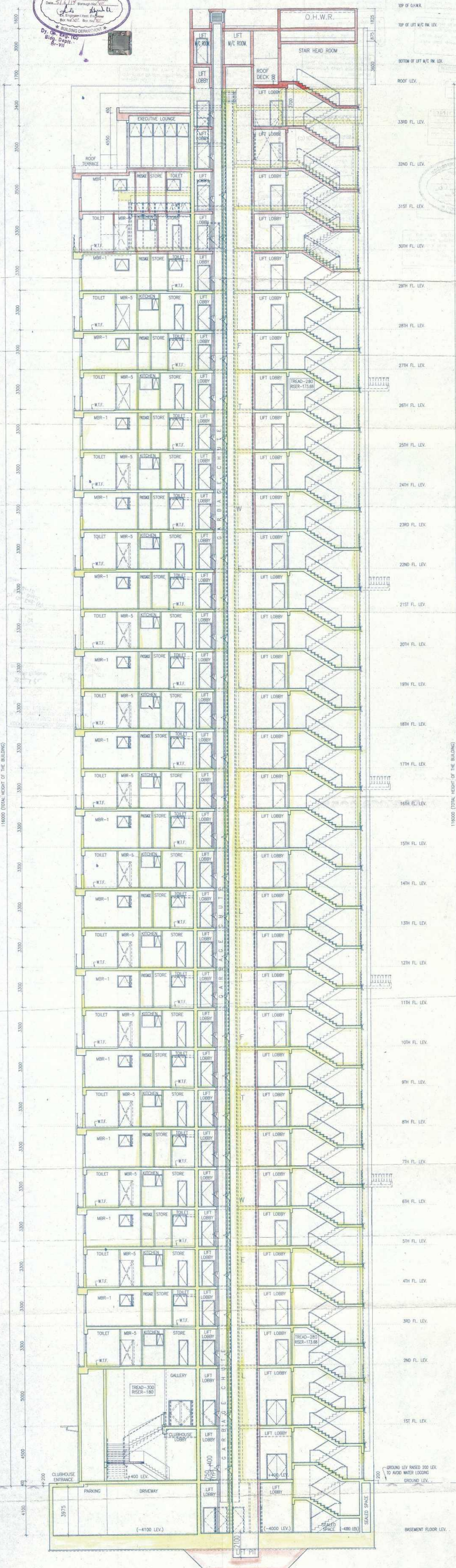


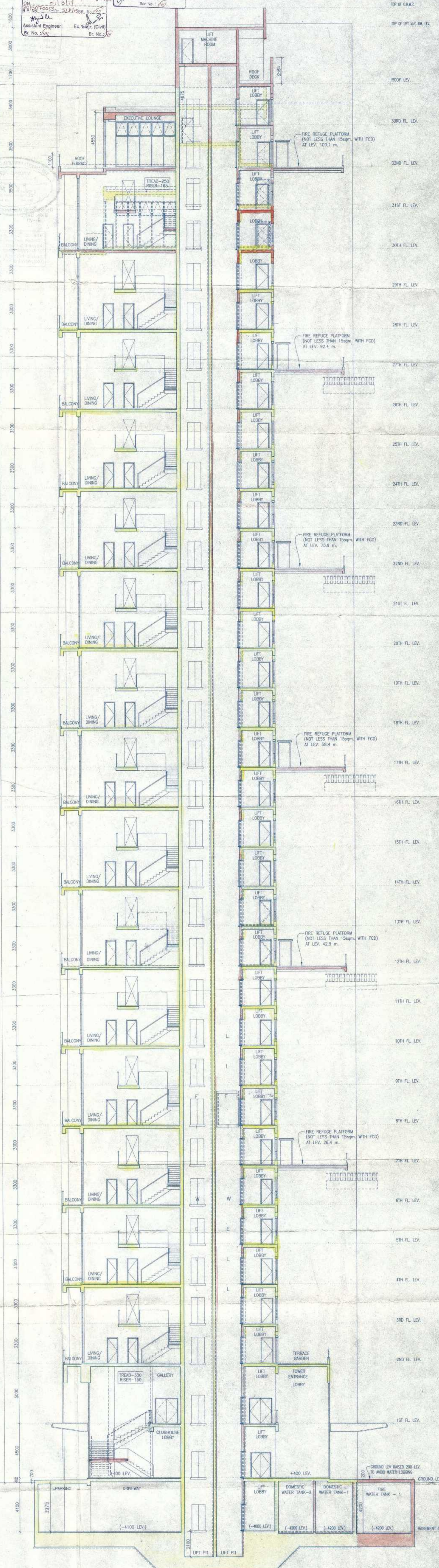


KOLKATA MUNICIPAL CORPORATION
BUILDING DEPT.
PLANS APPROVED U/R 24 (a) & (b) of
K.M.C. BUILDING RULES 2009
By S. G. Ghosh, S. P. Ghosh, S. P. Ghosh, S. P. Ghosh
Assistant Engineer, Ex. Engr. (Civil)
Br. No. 447

This Plan is To Be Treated as -
Final Plan and Construction to
be done in accordance with the
K.M.C. Building Rules 2009
Dated: 3/2/15
Ex. Engineer (C-3)
Br. No. 447



SECTION AT - AA
TOWER-1
SCALE - 1:100



SECTION AT - BB
TOWER-1
SCALE - 1:100

IT IS CERTIFIED THAT THE COMPREHENSIVE GEO-TECHNICAL REPORT OF THIS BUILDING HAS BEEN PREPARED BY ME FOR THE FOUNDATION AND SUPERSTRUCTURE DESIGN AND FOR THE DESIGN AND CONSTRUCTION OF THE FOUNDATION BY MEASURING THE SOIL SAMPLES AND ESTIMATING THE STRENGTH AND QUALITY OF THE SOIL BY WIDE PENETRATION OF THE SOIL. I SHALL ALSO CHECK THE RETURN OF THE SOIL AFTER THE CONSTRUCTION OF THE FOUNDATION OR SUPERSTRUCTURE APPROVED BY THE GEO-TECHNICAL DEPT. OF THE K.M.C. MUNICIPAL CORP.

AJOK ROY
Empanelled Geotechnical Engineer
Kolkata Municipal Corporation
Dist. No. G/1/1/1
Engr. No. 1014
Date: 10/1/15

SIGNATURE OF GEO-TECHNICAL ENGINEER

SCHEDULE OF DOORS & WINDOWS

TYPE	WIDTH	HEIGHT	SILL	LABEL	SIZE
W1	3000	2100	450	2800	2000x2100
W1A	2200	2800	450	2800	2000x2800
W1B	2200	2100	450	2800	2000x2100
W1C	2200	2200	1100	3300	2000x2200
W1D	2000	2100	450	2800	2000x2100
W1E	1700	1500	1100	2600	1700x1500
W1F	2000	1300	1100	2600	2000x1300
W1G	2000	2800	450	3300	2000x2800
W1H	2200	1400	2400	3800	2000x1400
W1I	1400	2100	450	2800	1400x2100
W1J	1200	1500	1100	2600	1200x1500
W1K	1000	1500	1100	2600	1000x1500
W1L	800	2200	450	2800	800x2200
W1M	600	1900	1100	2600	600x1900
W1N	800	2800	450	3300	800x2800
W1O	1700	1500	1100	2600	1700x1500
W1P	800	2100	450	2800	800x2100
W1Q	800	2100	450	2800	800x2100
W1R	1400	2100	450	2800	1400x2100
W1S	300	1500	1100	2600	300x1500
W1T	600	2100	450	2800	600x2100
W1U	600	1500	1100	2600	600x1500
W1V	600	1500	1100	2600	600x1500
W1W	600	1500	1100	2600	600x1500
W1X	600	1500	1100	2600	600x1500
W1Y	600	1500	1100	2600	600x1500
W1Z	600	1500	1100	2600	600x1500
W2	600	1500	1100	2600	600x1500
W2A	600	1500	1100	2600	600x1500
W2B	600	1500	1100	2600	600x1500
W2C	600	1500	1100	2600	600x1500
W2D	600	1500	1100	2600	600x1500
W2E	600	1500	1100	2600	600x1500
W2F	600	1500	1100	2600	600x1500
W2G	600	1500	1100	2600	600x1500
W2H	600	1500	1100	2600	600x1500
W2I	600	1500	1100	2600	600x1500
W2J	600	1500	1100	2600	600x1500
W2K	600	1500	1100	2600	600x1500
W2L	600	1500	1100	2600	600x1500
W2M	600	1500	1100	2600	600x1500
W2N	600	1500	1100	2600	600x1500
W2O	600	1500	1100	2600	600x1500
W2P	600	1500	1100	2600	600x1500
W2Q	600	1500	1100	2600	600x1500
W2R	600	1500	1100	2600	600x1500
W2S	600	1500	1100	2600	600x1500
W2T	600	1500	1100	2600	600x1500
W2U	600	1500	1100	2600	600x1500
W2V	600	1500	1100	2600	600x1500
W2W	600	1500	1100	2600	600x1500
W2X	600	1500	1100	2600	600x1500
W2Y	600	1500	1100	2600	600x1500
W2Z	600	1500	1100	2600	600x1500
W3	600	1500	1100	2600	600x1500
W3A	600	1500	1100	2600	600x1500
W3B	600	1500	1100	2600	600x1500
W3C	600	1500	1100	2600	600x1500
W3D	600	1500	1100	2600	600x1500
W3E	600	1500	1100	2600	600x1500
W3F	600	1500	1100	2600	600x1500
W3G	600	1500	1100	2600	600x1500
W3H	600	1500	1100	2600	600x1500
W3I	600	1500	1100	2600	600x1500
W3J	600	1500	1100	2600	600x1500
W3K	600	1500	1100	2600	600x1500
W3L	600	1500	1100	2600	600x1500
W3M	600	1500	1100	2600	600x1500
W3N	600	1500	1100	2600	600x1500
W3O	600	1500	1100	2600	600x1500
W3P	600	1500	1100	2600	600x1500
W3Q	600	1500	1100	2600	600x1500
W3R	600	1500	1100	2600	600x1500
W3S	600	1500	1100	2600	600x1500
W3T	600	1500	1100	2600	600x1500
W3U	600	1500	1100	2600	600x1500
W3V	600	1500	1100	2600	600x1500
W3W	600	1500	1100	2600	600x1500
W3X	600	1500	1100	2600	600x1500
W3Y	600	1500	1100	2600	600x1500
W3Z	600	1500	1100	2600	600x1500
W4	600	1500	1100	2600	600x1500
W4A	600	1500	1100	2600	600x1500
W4B	600	1500	1100	2600	600x1500
W4C	600	1500	1100	2600	600x1500
W4D	600	1500	1100	2600	600x1500
W4E	600	1500	1100	2600	600x1500
W4F	600	1500	1100	2600	600x1500
W4G	600	1500	1100	2600	600x1500
W4H	600	1500	1100	2600	600x1500
W4I	600	1500	1100	2600	600x1500
W4J	600	1500	1100	2600	600x1500
W4K	600	1500	1100	2600	600x1500
W4L	600	1500	1100	2600	600x1500
W4M	600	1500	1100	2600	600x1500
W4N	600	1500	1100	2600	600x1500
W4O	600	1500	1100	2600	600x1500
W4P	600	1500	1100	2600	600x1500
W4Q	600	1500	1100	2600	600x1500
W4R	600	1500	1100	2600	600x1500
W4S	600	1500	1100	2600	600x1500
W4T	600	1500	1100	2600	600x1500
W4U	600	1500	1100	2600	600x1500
W4V	600	1500	1100	2600	600x1500
W4W	600	1500	1100	2600	600x1500
W4X	600	1500	1100	2600	600x1500
W4Y	600	1500	1100	2600	600x1500
W4Z	600	1500	1100	2600	600x1500

GENERAL NOTES

1. ALL DIMENSIONS ARE IN MM.
2. ALL EXTERNAL WALLS 300 THK. & INTERNAL WALLS TO THK. UNLESS OTHERWISE MENTIONED.
3. ALL MASONRY WORKS ARE BOUNDARY BY CEMENT MORTAR (1:1) & 1:4.
4. EXTERNAL PLASTER IS 20 THK. & INTERNAL PLASTER IS 10MM THK. WITH 1:4 MORTAR.
5. ALL CONC. GRADE IS M20 (1:1.5:3).

CERTIFICATE OF OWNER

1. I ENGAGED ARCHITECT AND E&S DURING CONSTRUCTION.
2. I FOLLOWING THE INSTRUCTIONS OF ARCHITECT AND E&S DURING CONSTRUCTION OF THE BUILDING.
3. K.M.C. AUTHORITY WILL NOT BE RESPONSIBLE FOR STRUCTURAL STABILITY OF BUILDING AT ANY STAGE OF CONSTRUCTION. IF ANY STRUCTURAL DEFICIENCY IS FOUND TO BE DUE TO THIS, K.M.C. AUTHORITY WILL BE RESPONSIBLE FOR THE SAME.
4. THIS CONSTRUCTION OF WATER RESISTANT AND SEPTIC TANK IS SUBJECT TO THE GUIDANCE OF ARCHITECT & E&S.

FOR PS GROUP REALTY LTD.
ANINDA SALES PVT. LTD.
SHAM VINAYAK PVT. LTD.
DEVIPRA VIKRAM PVT. LTD.
R.V.C. & ASSOCIATES LLP
"REDDY BUILDERS PVT. LTD."
"SARAFIYA THE LLP PVT. LTD."
"RESEARCH & MEDICAL PVT. LTD."
BY THE CONSTITUTED AUTHORITY

SIGNATURE OF OWNER

CERTIFICATE OF STRUCTURAL ENGINEER

CERTIFIED THAT "THE STRUCTURAL DESIGN & CALCULATION OF THIS FOUNDATION & SUPERSTRUCTURE OF THE BUILDING HAS BEEN MADE BY ME CONSIDERING ALL POSSIBLE LOADS INCLUDING THE SEISMIC LOAD AS PER THE NATIONAL BUILDING CODES OF INDIA & SPECIFIED THAT IT IS SAFE & STABLE IN ALL RESPECTS".

SIGNATURE OF STRUCTURAL ENGINEER

UPPAL SAHAI
M. K. ROY
RAJANAR AGARWAL
ULTRA SANTRA
K.M.C. AUTHORITY

CERTIFICATE OF ARCHITECT

THE I.B.A. HAS CERTIFIED ON THE PLAN SHEET WITH FULL RESPONSIBILITY THAT THE BUILDING PLAN HAS BEEN DRAWN UP AS PER PROVISION OF K.M.C. BUILDING RULES 2009, AS AMENDED FROM TIME TO TIME AND THAT THE SITE CONDITION INCLUDING THE WIDTH OF THE ADJOINING ROAD CONFORM WITH THE PLAN AND IT IS A BUILDABLE SITE AND NOT A TANK OR A FILLED UP TANK.

SIGNATURE OF ARCHITECT

RAJANAR AGARWAL
Member of Council of
Architects (C.A.) 19/1790

TITLE

TOWER-1

SECTION AT - AA & BB

PROJECT

PROPOSED PLAN FOR AN ADDITIONAL BLOCK OF B+C+XXV STORED (12122 sq. mt.) RESIDENTIAL BUILDING U/S 393 OF K.M.C. ACT 1960, AND ADDITIONAL TWO FLOORS UNDER BUILD - 209(B) & 56(A) AND INTERNAL CHANGES UNDER RULE - 29(2)(A) OF EXISTING B+C+XXV STORED RESIDENTIAL BUILDING SANCTIONED VIDE R.P.No. - 2015070064, DATED - 03.08.2015, AT PREMISES NO. - 48, MATHESWARTOLA ROAD, KOLKATA - 700046, P.S. - PRAGATI MAIDAN, WARD NO. - 58, BOROUGH NO. - VII.

DATE: 04.07.15
DRAWN: MCH/2014/249
CHECK: CHG/1
SCALE: 1:100

SIGNATURE OF ARCHITECT

RAJANAR AGARWAL & ASSOCIATES
88, HOOD STREET, CALCUTTA - 16

