

1. TO BE USED FOR THE DESIGN OF THE STRUCTURE.
 2. THE DESIGNER SHALL BE RESPONSIBLE FOR THE ACCURACY OF THE DATA AND THE DESIGN.
 3. THE DESIGNER SHALL BE RESPONSIBLE FOR THE COMPLIANCE WITH THE APPLICABLE CODES AND STANDARDS.
 4. THE DESIGNER SHALL BE RESPONSIBLE FOR THE PROVISION OF ALL NECESSARY DETAILS AND CONNECTIONS.
 5. THE DESIGNER SHALL BE RESPONSIBLE FOR THE PROVISION OF ALL NECESSARY MATERIAL SPECIFICATIONS.
 6. THE DESIGNER SHALL BE RESPONSIBLE FOR THE PROVISION OF ALL NECESSARY CONSTRUCTION METHODS.
 7. THE DESIGNER SHALL BE RESPONSIBLE FOR THE PROVISION OF ALL NECESSARY SAFETY MEASURES.
 8. THE DESIGNER SHALL BE RESPONSIBLE FOR THE PROVISION OF ALL NECESSARY MAINTENANCE REQUIREMENTS.
 9. THE DESIGNER SHALL BE RESPONSIBLE FOR THE PROVISION OF ALL NECESSARY INFORMATION FOR THE CONTRACTOR.
 10. THE DESIGNER SHALL BE RESPONSIBLE FOR THE PROVISION OF ALL NECESSARY INFORMATION FOR THE OWNER.

STATEMENT OF WORK
 THE CONTRACTOR SHALL BE RESPONSIBLE FOR THE CONSTRUCTION OF THE STRUCTURE IN ACCORDANCE WITH THE DESIGN AND THE APPLICABLE CODES AND STANDARDS.
 THE CONTRACTOR SHALL BE RESPONSIBLE FOR THE PROVISION OF ALL NECESSARY MATERIALS AND LABOR.
 THE CONTRACTOR SHALL BE RESPONSIBLE FOR THE PROVISION OF ALL NECESSARY CONSTRUCTION METHODS.
 THE CONTRACTOR SHALL BE RESPONSIBLE FOR THE PROVISION OF ALL NECESSARY SAFETY MEASURES.
 THE CONTRACTOR SHALL BE RESPONSIBLE FOR THE PROVISION OF ALL NECESSARY MAINTENANCE REQUIREMENTS.
 THE CONTRACTOR SHALL BE RESPONSIBLE FOR THE PROVISION OF ALL NECESSARY INFORMATION FOR THE OWNER.

ARCHITECT & STRUCTURAL CONSULTANT
 PROJECT NO. 100-0000000000000000
 SHEET NO. 100-0000000000000000
 DATE: 10/10/2024
 DRAWN BY: [Name]
 CHECKED BY: [Name]
 APPROVED BY: [Name]

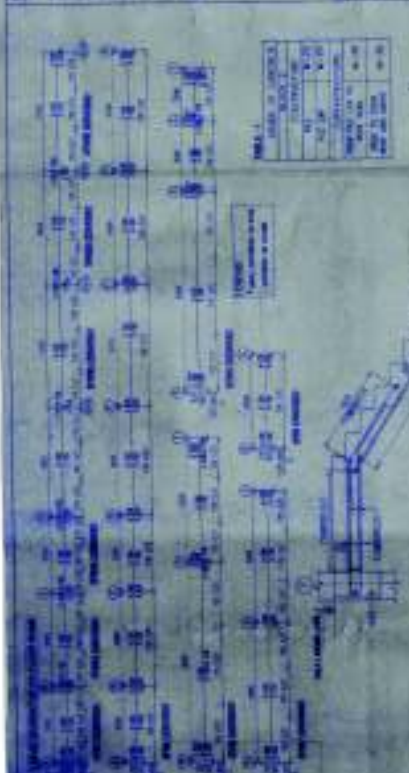


TABLE 1: CHECKED REINFORCEMENT

NO.	NO. OF REINFORCEMENT	REINFORCEMENT	REINFORCEMENT	REINFORCEMENT
1	10	10	10	10
2	10	10	10	10
3	10	10	10	10
4	10	10	10	10
5	10	10	10	10
6	10	10	10	10
7	10	10	10	10
8	10	10	10	10
9	10	10	10	10
10	10	10	10	10
11	10	10	10	10
12	10	10	10	10
13	10	10	10	10
14	10	10	10	10
15	10	10	10	10
16	10	10	10	10
17	10	10	10	10
18	10	10	10	10
19	10	10	10	10
20	10	10	10	10
21	10	10	10	10
22	10	10	10	10
23	10	10	10	10
24	10	10	10	10
25	10	10	10	10
26	10	10	10	10
27	10	10	10	10
28	10	10	10	10
29	10	10	10	10
30	10	10	10	10
31	10	10	10	10
32	10	10	10	10
33	10	10	10	10
34	10	10	10	10
35	10	10	10	10
36	10	10	10	10
37	10	10	10	10
38	10	10	10	10
39	10	10	10	10
40	10	10	10	10
41	10	10	10	10
42	10	10	10	10
43	10	10	10	10
44	10	10	10	10
45	10	10	10	10
46	10	10	10	10
47	10	10	10	10
48	10	10	10	10
49	10	10	10	10
50	10	10	10	10

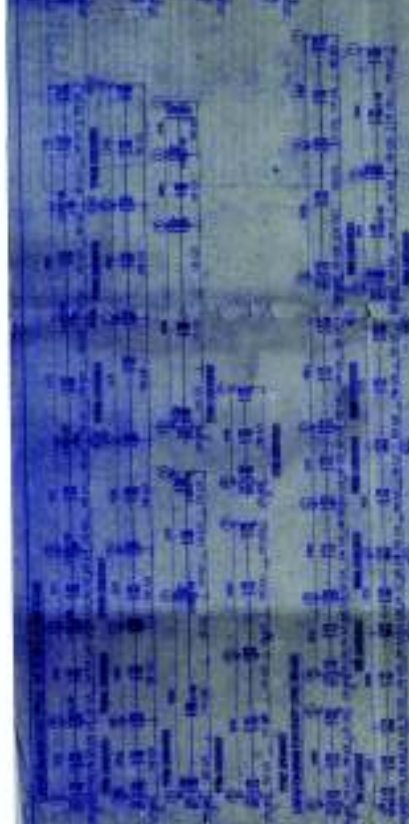
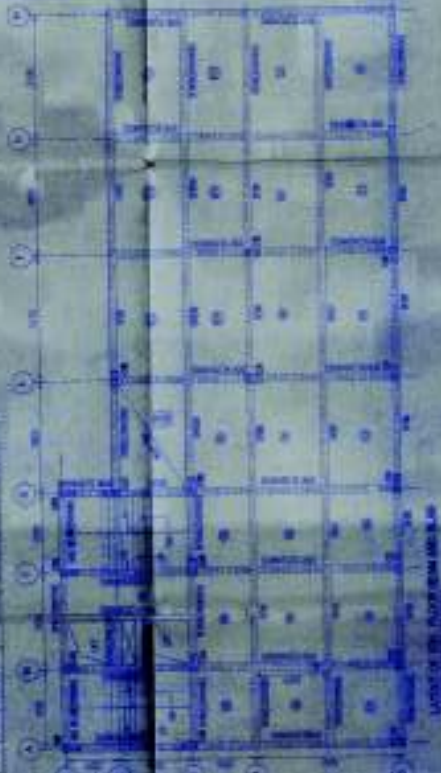


TABLE 2: CHECKED REINFORCEMENT

NO.	NO. OF REINFORCEMENT	REINFORCEMENT	REINFORCEMENT	REINFORCEMENT
1	10	10	10	10
2	10	10	10	10
3	10	10	10	10
4	10	10	10	10
5	10	10	10	10
6	10	10	10	10
7	10	10	10	10
8	10	10	10	10
9	10	10	10	10
10	10	10	10	10
11	10	10	10	10
12	10	10	10	10
13	10	10	10	10
14	10	10	10	10
15	10	10	10	10
16	10	10	10	10
17	10	10	10	10
18	10	10	10	10
19	10	10	10	10
20	10	10	10	10
21	10	10	10	10
22	10	10	10	10
23	10	10	10	10
24	10	10	10	10
25	10	10	10	10
26	10	10	10	10
27	10	10	10	10
28	10	10	10	10
29	10	10	10	10
30	10	10	10	10
31	10	10	10	10
32	10	10	10	10
33	10	10	10	10
34	10	10	10	10
35	10	10	10	10
36	10	10	10	10
37	10	10	10	10
38	10	10	10	10
39	10	10	10	10
40	10	10	10	10
41	10	10	10	10
42	10	10	10	10
43	10	10	10	10
44	10	10	10	10
45	10	10	10	10
46	10	10	10	10
47	10	10	10	10
48	10	10	10	10
49	10	10	10	10
50	10	10	10	10

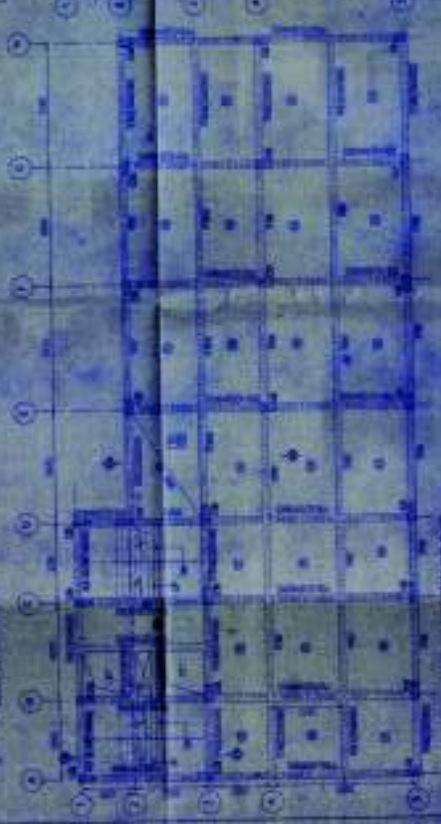


FIGURE 10: FLOOR SLAB AND BEAM CONNECTION DETAIL
 FIGURE 11: FLOOR SLAB AND BEAM CONNECTION DETAIL (SECTION H-H)

07-1

PARTY'S COPY

Division of General Services
Attention: Procurement Administration
100 North 17th Street
Raleigh, NC 27601

FOR THE BUYER'S USE ONLY
This document is the property of the State of North Carolina. It is to be used only for the purpose of the purchase order to which it is attached. It is not to be distributed to other parties. If you are not the intended recipient, please notify the Procurement Administration at (919) 733-2000.

FOR THE BUYER'S USE ONLY
This document is the property of the State of North Carolina. It is to be used only for the purpose of the purchase order to which it is attached. It is not to be distributed to other parties. If you are not the intended recipient, please notify the Procurement Administration at (919) 733-2000.

07-1