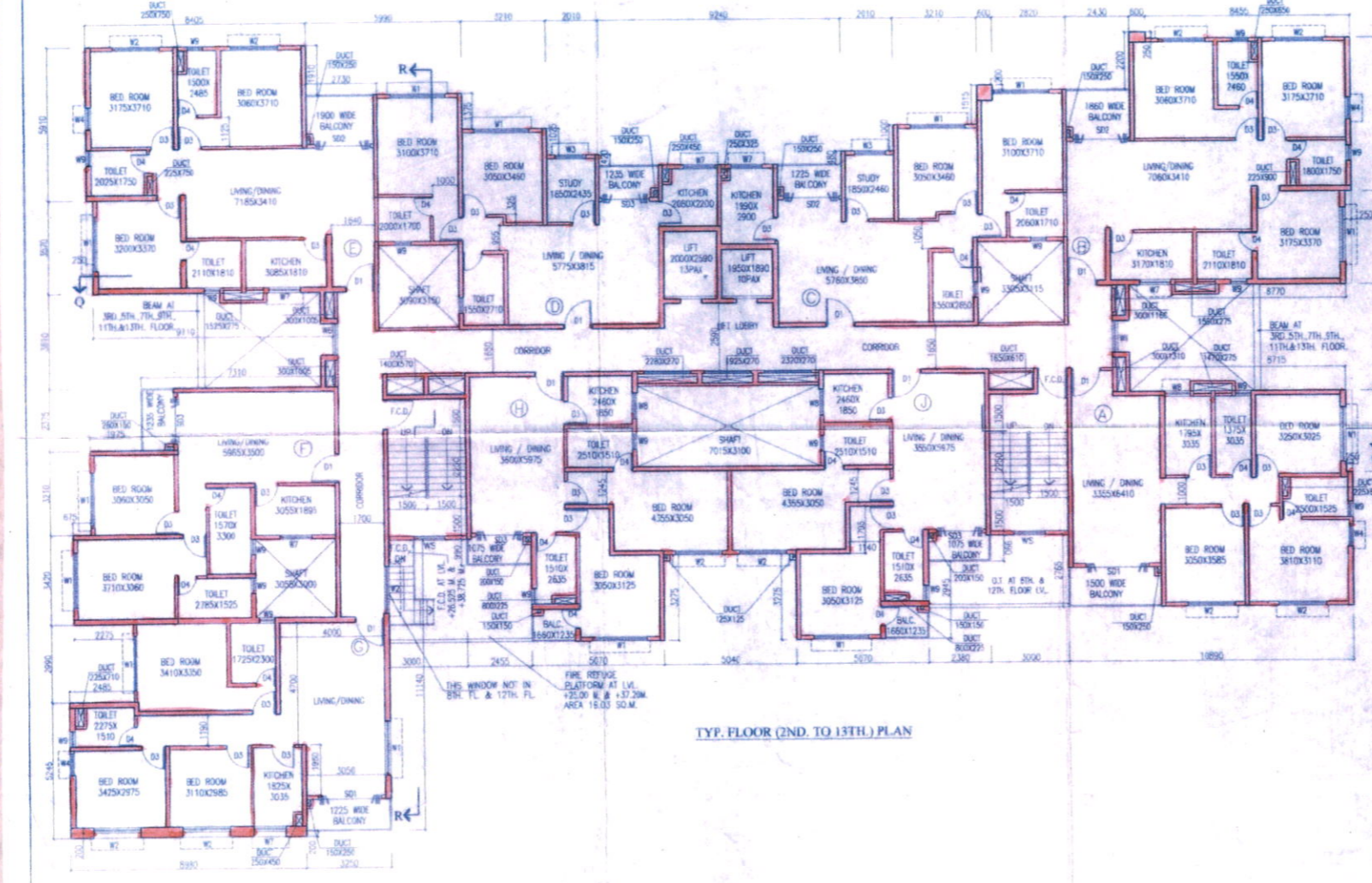


ROOF PLAN



TYP. FLOOR (2ND. TO 13TH.) PLAN

- NAME OF OWNER
- NAME OF THE COMPANY
1. ERKA SALES PRIVATE LIMITED
  2. JADHARDELA DEALERS PRIVATE LIMITED
  3. JADHARDELA TOWER PRIVATE LIMITED
  4. JADHARDELA TOWER PRIVATE LIMITED
  5. JADHARDELA TOWER PRIVATE LIMITED
  6. JADHARDELA TOWER PRIVATE LIMITED
  7. JADHARDELA TOWER PRIVATE LIMITED
  8. JADHARDELA TOWER PRIVATE LIMITED
  9. JADHARDELA TOWER PRIVATE LIMITED
  10. JADHARDELA TOWER PRIVATE LIMITED
  11. JADHARDELA TOWER PRIVATE LIMITED
  12. JADHARDELA TOWER PRIVATE LIMITED
  13. JADHARDELA TOWER PRIVATE LIMITED
  14. JADHARDELA TOWER PRIVATE LIMITED
  15. JADHARDELA TOWER PRIVATE LIMITED
  16. JADHARDELA TOWER PRIVATE LIMITED
  17. JADHARDELA TOWER PRIVATE LIMITED
  18. JADHARDELA TOWER PRIVATE LIMITED
  19. JADHARDELA TOWER PRIVATE LIMITED
  20. JADHARDELA TOWER PRIVATE LIMITED
  21. JADHARDELA TOWER PRIVATE LIMITED
  22. JADHARDELA TOWER PRIVATE LIMITED
  23. JADHARDELA TOWER PRIVATE LIMITED
  24. JADHARDELA TOWER PRIVATE LIMITED
  25. JADHARDELA TOWER PRIVATE LIMITED
  26. JADHARDELA TOWER PRIVATE LIMITED
  27. JADHARDELA TOWER PRIVATE LIMITED
  28. JADHARDELA TOWER PRIVATE LIMITED
  29. JADHARDELA TOWER PRIVATE LIMITED
  30. JADHARDELA TOWER PRIVATE LIMITED
  31. JADHARDELA TOWER PRIVATE LIMITED
  32. JADHARDELA TOWER PRIVATE LIMITED
  33. JADHARDELA TOWER PRIVATE LIMITED
  34. JADHARDELA TOWER PRIVATE LIMITED
  35. JADHARDELA TOWER PRIVATE LIMITED
  36. JADHARDELA TOWER PRIVATE LIMITED
  37. JADHARDELA TOWER PRIVATE LIMITED
  38. JADHARDELA TOWER PRIVATE LIMITED
  39. JADHARDELA TOWER PRIVATE LIMITED
  40. JADHARDELA TOWER PRIVATE LIMITED
  41. JADHARDELA TOWER PRIVATE LIMITED
  42. JADHARDELA TOWER PRIVATE LIMITED
  43. JADHARDELA TOWER PRIVATE LIMITED
  44. JADHARDELA TOWER PRIVATE LIMITED
  45. JADHARDELA TOWER PRIVATE LIMITED
  46. JADHARDELA TOWER PRIVATE LIMITED
  47. JADHARDELA TOWER PRIVATE LIMITED
  48. JADHARDELA TOWER PRIVATE LIMITED
  49. JADHARDELA TOWER PRIVATE LIMITED
  50. JADHARDELA TOWER PRIVATE LIMITED
  51. JADHARDELA TOWER PRIVATE LIMITED
  52. JADHARDELA TOWER PRIVATE LIMITED
  53. JADHARDELA TOWER PRIVATE LIMITED
  54. JADHARDELA TOWER PRIVATE LIMITED
  55. JADHARDELA TOWER PRIVATE LIMITED
  56. JADHARDELA TOWER PRIVATE LIMITED
  57. JADHARDELA TOWER PRIVATE LIMITED
  58. JADHARDELA TOWER PRIVATE LIMITED
  59. JADHARDELA TOWER PRIVATE LIMITED
  60. JADHARDELA TOWER PRIVATE LIMITED
  61. JADHARDELA TOWER PRIVATE LIMITED
  62. JADHARDELA TOWER PRIVATE LIMITED
  63. JADHARDELA TOWER PRIVATE LIMITED
  64. JADHARDELA TOWER PRIVATE LIMITED
  65. JADHARDELA TOWER PRIVATE LIMITED
  66. JADHARDELA TOWER PRIVATE LIMITED
  67. JADHARDELA TOWER PRIVATE LIMITED
  68. JADHARDELA TOWER PRIVATE LIMITED
  69. JADHARDELA TOWER PRIVATE LIMITED
  70. JADHARDELA TOWER PRIVATE LIMITED
  71. JADHARDELA TOWER PRIVATE LIMITED
  72. JADHARDELA TOWER PRIVATE LIMITED
  73. JADHARDELA TOWER PRIVATE LIMITED
  74. JADHARDELA TOWER PRIVATE LIMITED
  75. JADHARDELA TOWER PRIVATE LIMITED
  76. JADHARDELA TOWER PRIVATE LIMITED
  77. JADHARDELA TOWER PRIVATE LIMITED
  78. JADHARDELA TOWER PRIVATE LIMITED
  79. JADHARDELA TOWER PRIVATE LIMITED
  80. JADHARDELA TOWER PRIVATE LIMITED
  81. JADHARDELA TOWER PRIVATE LIMITED
  82. JADHARDELA TOWER PRIVATE LIMITED
  83. JADHARDELA TOWER PRIVATE LIMITED
  84. JADHARDELA TOWER PRIVATE LIMITED
  85. JADHARDELA TOWER PRIVATE LIMITED
  86. JADHARDELA TOWER PRIVATE LIMITED
  87. JADHARDELA TOWER PRIVATE LIMITED
  88. JADHARDELA TOWER PRIVATE LIMITED
  89. JADHARDELA TOWER PRIVATE LIMITED
  90. JADHARDELA TOWER PRIVATE LIMITED
  91. JADHARDELA TOWER PRIVATE LIMITED
  92. JADHARDELA TOWER PRIVATE LIMITED
  93. JADHARDELA TOWER PRIVATE LIMITED
  94. JADHARDELA TOWER PRIVATE LIMITED
  95. JADHARDELA TOWER PRIVATE LIMITED
  96. JADHARDELA TOWER PRIVATE LIMITED
  97. JADHARDELA TOWER PRIVATE LIMITED
  98. JADHARDELA TOWER PRIVATE LIMITED
  99. JADHARDELA TOWER PRIVATE LIMITED
  100. JADHARDELA TOWER PRIVATE LIMITED

SCHEDULE OF DOORS & WINDOWS

NO.	SILL	LINTEL	SIZE
D1	2150	1100 X 2150	
D2	2150	1900 X 2150	
D3A	2150	1900 X 2150	
D3B	2500	2900 X 2000	
D3	2150	900 X 2150	
D4	2150	750 X 2150	
FCD	2150	1150 X 2150	
SD1	2150	2400 X 2150	
SD2	2150	2100 X 2150	
SD3	2150	1900 X 2150	
W1	350	2150 X 1800	
W2	350	2150 X 1800	
W3	350	2150 X 1800	
W4	350	2150 X 1800	
W5	550	2150 X 1800	
W6	750	2150 X 1800	
W7	1100	2150 X 1800	
W8	1100	2150 X 1800	
W9	1250	2150 X 1800	
W10	750	2150 X 1800	
W5	550	2150 X 1800	

CERTIFICATE OF STRUCTURAL ENGINEER

I CERTIFY THAT THE STRUCTURAL DRAWING AND DESIGN OF BOTH THE FOUNDATION AND SUPERSTRUCTURE OF THE BUILDING / BUILDINGS HAS BEEN MADE CONSIDERING THE SOIL TEST REPORT, AS PER THE RULES AND REGULATIONS MADE UNDER THE ACT AND ALSO CONSIDERING ALL POSSIBLE LOADS, SEISMIC LOAD AND THE MOMENTS GENERATED BY THE PROPOSED STRUCTURE AS PER THE BUREAU OF INDIAN STANDARD AND NATIONAL BUILDING CODE OF INDIA AND CERTIFIED THAT IT IS SAFE AND STABLE IN ALL RESPECTS AND THESE PROVISIONS SHALL BE ADHERED TO DURING THE CONSTRUCTION

*M. Manoj Kumar*  
 MANGU KHATI MALUMBAR  
 B.Sc. (B.A.), M.C.E. (Struct.)  
 48, Bldg. C, L. D. Road, M.A.C.E. (S)  
 152-41 of  
 The Central Government

SIGNATURE OF STRUCTURAL ENGINEER

I CERTIFY THAT ALL THE ARCHITECTURAL DRAWINGS OF THE PROJECT AT R.S.L.R. DAG NO. 615(P), 620, 621, 622, 623, 624, 625, 627, 628, 629(P), 630(P), 632(P), 638, 639, 640, 641, 642, 643, 644, 645, 646, 647, 648, 649, 650(P), 651(P), 652, 653, 654, 655, 656, 657, 658, 659, 660, 661, 662, 663, 664, 665, 666, 667, 668, 669, 670, 671, 672, 673, 674, 675, 676, 677, 678, 679, 680, 681, 682, 683, 684, 685, 686, 687, 688, 689, 690, 691, 692, 693, 694, 695, 696, 697, 698, 699, 700, 701, 702, 703, 704, 705, 706, 707, 708, 709, 710, 711, 712, 713, 714, 715, 716, 717, 718, 719, 720, 721, 722, 723, 724, 725, 726, 727, 728, 729, 730, 731, 732, 733, 734, 735, 736, 737, 738, 739, 740, 741, 742, 743, 744, 745, 746, 747, 748, 749, 750, 751, 752, 753, 754, 755, 756, 757, 758, 759, 760, 761, 762, 763, 764, 765, 766, 767, 768, 769, 770, 771, 772, 773, 774, 775, 776, 777, 778, 779, 780, 781, 782, 783, 784, 785, 786, 787, 788, 789, 790, 791, 792, 793, 794, 795, 796, 797, 798, 799, 800, 801, 802, 803, 804, 805, 806, 807, 808, 809, 810, 811, 812, 813, 814, 815, 816, 817, 818, 819, 820, 821, 822, 823, 824, 825, 826, 827, 828, 829, 830, 831, 832, 833, 834, 835, 836, 837, 838, 839, 840, 841, 842, 843, 844, 845, 846, 847, 848, 849, 850, 851, 852, 853, 854, 855, 856, 857, 858, 859, 860, 861, 862, 863, 864, 865, 866, 867, 868, 869, 870, 871, 872, 873, 874, 875, 876, 877, 878, 879, 880, 881, 882, 883, 884, 885, 886, 887, 888, 889, 890, 891, 892, 893, 894, 895, 896, 897, 898, 899, 900, 901, 902, 903, 904, 905, 906, 907, 908, 909, 910, 911, 912, 913, 914, 915, 916, 917, 918, 919, 920, 921, 922, 923, 924, 925, 926, 927, 928, 929, 930, 931, 932, 933, 934, 935, 936, 937, 938, 939, 940, 941, 942, 943, 944, 945, 946, 947, 948, 949, 950, 951, 952, 953, 954, 955, 956, 957, 958, 959, 960, 961, 962, 963, 964, 965, 966, 967, 968, 969, 970, 971, 972, 973, 974, 975, 976, 977, 978, 979, 980, 981, 982, 983, 984, 985, 986, 987, 988, 989, 990, 991, 992, 993, 994, 995, 996, 997, 998, 999, 1000

SIGNATURE OF ARCHITECT

JAY PRAKASH BHARAT KUMAR AGRAWAL  
 B. Arch., A.C.A.  
 Reg. No. CA / 81 / 10208  
 ARCHITECT BL. NO. - 3214

SIGNATURE OF GEO-TECHNICAL ENGINEER

IT IS CERTIFIED THAT THE COMPREHENSIVE GEO-TECHNICAL REPORT ON SOIL INVESTIGATION HAS BEEN PREPARED BY ME FOR DESIGN AND CALCULATION OF THE FOUNDATION BY ANALYZING THE SOIL SAMPLES FOR ESTIMATING THE BEARING CAPACITY OF THE SOIL ON WHICH FOUNDATION OF THE STRUCTURE WILL BE CONSTRUCTED. I SHALL ALSO CHECK THE NATURE OF THE SOIL AFTER EXCAVATION AT SITE SO THAT FOUNDATION IS EXTENDED UP TO THE APPROPRIATE DEPTH THAT HAS BEEN PROPOSED IN THE GEO-TECHNICAL REPORT.

*S. Prakash*  
 S. PRAKASH  
 B.Tech. (Civil), M.C.E. (Struct.)  
 (Enrollment No. 028-1800018/18/18)

SIGNATURE OF GEO-TECHNICAL ENGINEER

*S. Prakash*  
 S. PRAKASH  
 B.Tech. (Civil), M.C.E. (Struct.)  
 (Enrollment No. 028-1800018/18/18)

SIGNATURE OF TOWN PLANNER OR URBAN DESIGNER

*M. Manoj Kumar*  
 MANGU KHATI MALUMBAR  
 B.Sc. (B.A.), M.C.E. (Struct.)  
 48, Bldg. C, L. D. Road, M.A.C.E. (S)  
 152-41 of  
 The Central Government

SIGNATURE OF STRUCTURAL REVIEWER

TITLE: TYPICAL FLOOR PLAN (2ND TO 13TH.) & ROOF PLAN (BLOCK-7B)

PROJECT: PROPOSED ADDITION OF 6 NOS. (G-XII) & 1 NO. (B-G-VII) 1 NO. (V) STORED NEW BLOCKS WITH 6 NOS. (B-G-X) STORED EXISTING BLOCKS UNDER CONSTRUCTION IN RESIDENTIAL COMPLEX ON RAJAJHAT MAIN ROAD (211 BUS ROUTE), AT MOLZA - RAGHANI, J.L. NO. 12 IN R.S.L.R. DAG NO. 615(P), 620, 621, 622, 623, 624, 625, 627, 628, 629(P), 630(P), 632(P), 638, 639, 640, 641, 642, 643, 644, 645, 646, 647, 648, 649, 650(P), 651(P), 652, 653, 654, 655, 656, 657, 658, 659, 660, 661, 662, 663, 664, 665, 666, 667, 668, 669, 670, 671, 672, 673, 674, 675, 676, 677, 678, 679, 680, 681, 682, 683, 684, 685, 686, 687, 688, 689, 690, 691, 692, 693, 694, 695, 696, 697, 698, 699, 700, 701, 702, 703, 704, 705, 706, 707, 708, 709, 710, 711, 712, 713, 714, 715, 716, 717, 718, 719, 720, 721, 722, 723, 724, 725, 726, 727, 728, 729, 730, 731, 732, 733, 734, 735, 736, 737, 738, 739, 740, 741, 742, 743, 744, 745, 746, 747, 748, 749, 750, 751, 752, 753, 754, 755, 756, 757, 758, 759, 760, 761, 762, 763, 764, 765, 766, 767, 768, 769, 770, 771, 772, 773, 774, 775, 776, 777, 778, 779, 780, 781, 782, 783, 784, 785, 786, 787, 788, 789, 790, 791, 792, 793, 794, 795, 796, 797, 798, 799, 800, 801, 802, 803, 804, 805, 806, 807, 808, 809, 810, 811, 812, 813, 814, 815, 816, 817, 818, 819, 820, 821, 822, 823, 824, 825, 826, 827, 828, 829, 830, 831, 832, 833, 834, 835, 836, 837, 838, 839, 840, 841, 842, 843, 844, 845, 846, 847, 848, 849, 850, 851, 852, 853, 854, 855, 856, 857, 858, 859, 860, 861, 862, 863, 864, 865, 866, 867, 868, 869, 870, 871, 872, 873, 874, 875, 876, 877, 878, 879, 880, 881, 882, 883, 884, 885, 886, 887, 888, 889, 890, 891, 892, 893, 894, 895, 896, 897, 898, 899, 900, 901, 902, 903, 904, 905, 906, 907, 908, 909, 910, 911, 912, 913, 914, 915, 916, 917, 918, 919, 920, 921, 922, 923, 924, 925, 926, 927, 928, 929, 930, 931, 932, 933, 934, 935, 936, 937, 938, 939, 940, 941, 942, 943, 944, 945, 946, 947, 948, 949, 950, 951, 952, 953, 954, 955, 956, 957, 958, 959, 960, 961, 962, 963, 964, 965, 966, 967, 968, 969, 970, 971, 972, 973, 974, 975, 976, 977, 978, 979, 980, 981, 982, 983, 984, 985, 986, 987, 988, 989, 990, 991, 992, 993, 994, 995, 996, 997, 998, 999, 1000

ARCHITECTS: AGRAWAL & AGRAWAL

SCALE: 1:100

DATE: 07/08/15

SHEET NO: 24 OF 44

DESIGN: ANJAN ARJUNAN

CHECKED: SUPRIYA



24/44  
BL-78

ARCHITECT: BARNIKA CHATTERJEE CIVIL/STRUCTURAL ENGINEER HARSH KANTI MAJUMDER GEO-TECHNICAL ENGINEER SHYAMAL KUMAR MITRA TOWN PLANNER/URBAN DESIGNER BARNIKA CHATTERJEE STRUCTURAL ENGINEER HARSH KANTI MAJUMDER	Enrollment No: A.C.H.R./N.K.D.A./10/00223 Enrollment No: S.T.E.R./N.K.D.A./10/00019 Enrollment No: Q.T.E.R./N.K.D.A./G.I.E.R.-11000/09/00010 Enrollment No: T.P.E.R./N.K.D.A./10/00022 Enrollment No: S.T.R./N.K.D.A./14/00001
--	---

STRUCTURAL DRAWINGS, STRUCTURAL DESIGN CALCULATIONS & SOIL TEST REPORT ARE NOT CHECKED AND KEPT FOR RECORDS ONLY.

NEW TOWN KOLKATA DEVELOPMENT AUTHORITY  
No Objection Certificate for  
Sanction of Building Plan for Construction Purpose  
Memo No. 6276 (3)/N.K.D.A./BPS-04 (09)/2014  
Date: 03 NOV 2015  
Building Particulars B+G+13 storied Residential Building at Dug No. 620 to 625, 627, 628, 615 (P), 629 (P), 630 (P), 632 (P), 638 to 640, 650 (P), 651 (P), 652 to 657, 589/658 (P) & 639/734.  
Neuza - Raigachi, J.L. No. 12, 24 Pgs (N).  
Note: The Proposal is recommended for approval subject to submission of Environment Clearance.

Sanctioned S.A.P.  
2-12-15  
Executive Officer  
Rajarhat Panchayat Samity

Sayanti Majumder  
Assistant Architect  
New Town Kolkata Development Authority

S. Chatterjee  
SECRETARY  
New Town Kolkata Development Authority