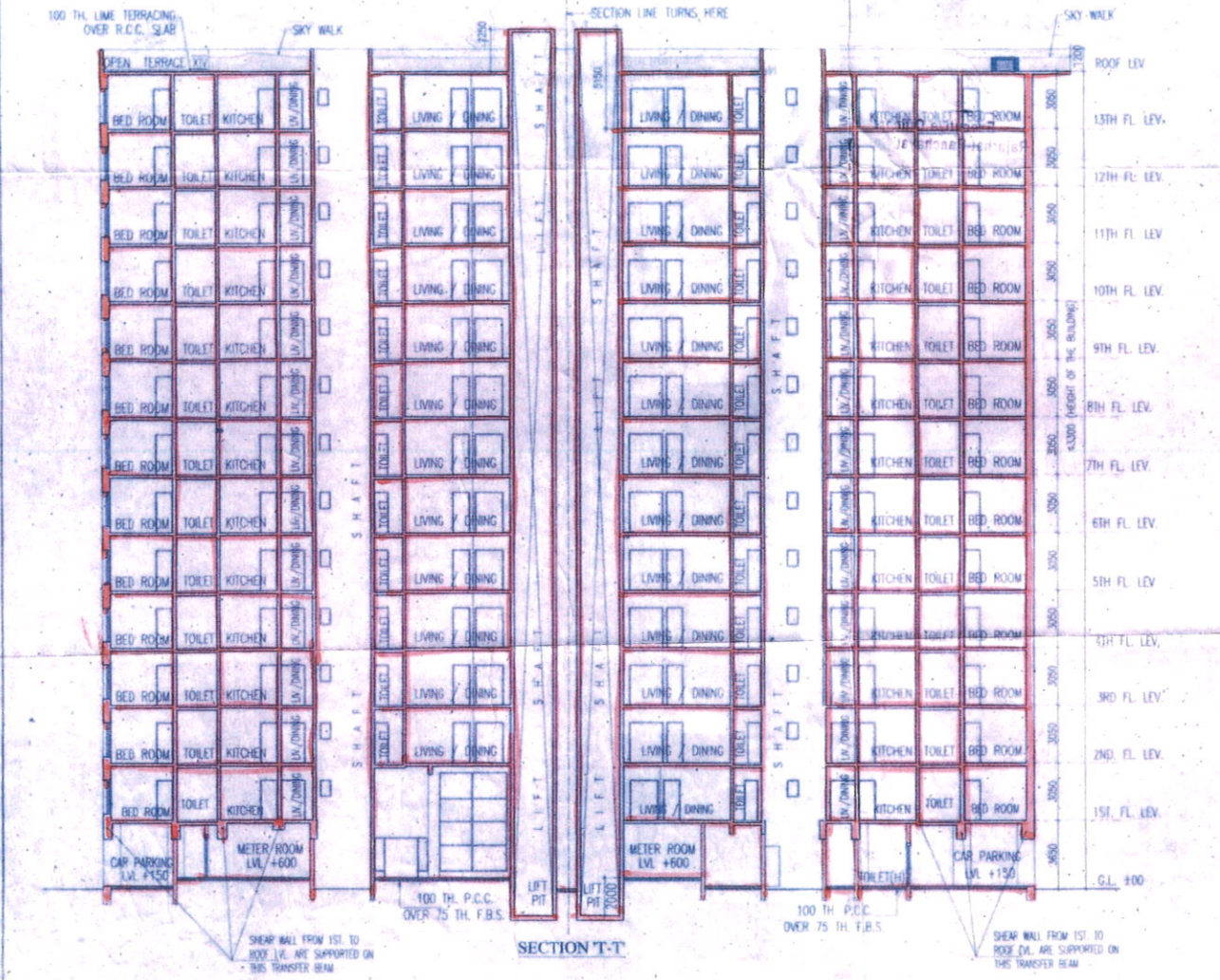


FRONT ELEVATION

SECTION 'S-S'



SECTION 'T-T'

NAME OF OWNER
NAME OF THE COMPANY

1. BRISK SALES PRIVATE LIMITED
2. AADHARSEELA DEALERS PRIVATE LIMITED
3. AADHARSEELA TIE UP PRIVATE LIMITED
4. AADHARSEELA TOWER PRIVATE LIMITED
5. ACANTHUS ESTATE PRIVATE LIMITED
6. ACTUAMEN COMPLEX PRIVATE LIMITED
7. ADYUMEN HOUSING PRIVATE LIMITED
8. ADMURTHI ENCLAVE PRIVATE LIMITED
9. ADISHAKTI PROMOTERS PRIVATE LIMITED
10. ADVA PROMOTERS PRIVATE LIMITED
11. AKSHARWAN COMMERCIAL PRIVATE LIMITED
12. ALDHA ENCLAVE PRIVATE LIMITED
13. AMAL INFRAVENTURES PRIVATE LIMITED
14. AMAL T&S REALTORS PRIVATE LIMITED
15. AMANAT TRADERS PRIVATE LIMITED
16. ANAMATI ESTATES PRIVATE LIMITED
17. ANPRIC BARTER PRIVATE LIMITED
18. ANACADO MERCANTILE PRIVATE LIMITED
19. AWEOSOME PROMOTERS PRIVATE LIMITED
20. BAOBERI MARKETING PRIVATE LIMITED
21. BAOBERI TRADING PRIVATE LIMITED
22. BACADEVA ANKASHAN PRIVATE LIMITED
23. BANK BHARI CONSTRUCTION PRIVATE LIMITED
24. BANK BHARI GRHA NIRMAM PRIVATE LIMITED
25. BANK BHARI HOUSING PRIVATE LIMITED
26. BARBERY COMMOTRAGE PRIVATE LIMITED
27. BHARAVKAPPA IMPEX PRIVATE LIMITED
28. BHALCHANDRA HOUSING PRIVATE LIMITED
29. BONNEVILLE NIRMAM PRIVATE LIMITED
30. BOOSTER REALTISTS PRIVATE LIMITED
31. BRM TIE UP PRIVATE LIMITED
32. CBPM VINMAY PRIVATE LIMITED
33. BUGLOSSE NIRMAM PRIVATE LIMITED
34. CACAMELLA BARTER PRIVATE LIMITED
35. CAMOUELLA TIE UP PRIVATE LIMITED
36. CASALABIA NIRMAM PRIVATE LIMITED
37. CHAMPAGNE ENCLAVE PRIVATE LIMITED
38. CLEMATIS DEAL.COM PRIVATE LIMITED
39. COPENHAGEN DEALERS PRIVATE LIMITED
40. COORNSILK ENCLAVE PRIVATE LIMITED
41. COSMOS MANSIONS PRIVATE LIMITED
42. DELPHINUM PROJEKTS PRIVATE LIMITED
43. DIVYAJAY TIE UP PRIVATE LIMITED
44. EDELWEISS TIE UP PRIVATE LIMITED
45. FREESIA VENTURES PRIVATE LIMITED
46. FUMJUM ENCLAVE PRIVATE LIMITED
47. GALLOWAY VYAPAR PRIVATE LIMITED
48. GARDENA BARKH PRIVATE LIMITED
49. GLADIOLUS VINMAY PRIVATE LIMITED
50. GOLDENROD VINMAY PRIVATE LIMITED
51. GOMPHRENA PROPERTIES PRIVATE LIMITED
52. GOPALPRIYA HOUSING PRIVATE LIMITED
53. GOPALPRIYA INFRACON PRIVATE LIMITED
54. GOPALPRIYA INFRASTRUCTURE PRIVATE LIMITED
55. LIMITEDGOPALPRIYA PROMOTERS PRIVATE LIMITED
56. LIMITEDGOWAST PROMOTERS PRIVATE LIMITED
57. LIMITEDGOWANESHWAR HOUSING PRIVATE LIMITED
58. LIMITEDGOWANESHWAR NIRMAM PRIVATE LIMITED
59. LIMITEDGOWANESHWAR PROMOTERS PRIVATE LIMITED
60. LIMITEDGOWANESHWAR INFRACON PRIVATE LIMITED
61. LIMITEDHAZEL NIRMAM PRIVATE LIMITED
62. HONESSKOLE CONSTRUCTION PRIVATE LIMITED
63. JOGRAJ COMPLEX PRIVATE LIMITED
64. JOGRAJ ENCLAVE PRIVATE LIMITED
65. JOGRAJ HOUSING PRIVATE LIMITED
66. JOGRAJ PROJECTS PRIVATE LIMITED
67. KAILAPATHI HOUSING PRIVATE LIMITED
68. KAILAPATHI PROMOTERS PRIVATE LIMITED
69. KHATUWALA BUILDCON PRIVATE LIMITED
70. KHATUWALA GRHA NIRMAM PRIVATE LIMITED
71. KHATUWALA HOUSING PRIVATE LIMITED
72. KHATUWALA INFRACON PRIVATE LIMITED
73. KHATUWALA INFRASTRUCTURE PRIVATE LIMITED
74. KHATUWALA NIRMAM PRIVATE LIMITED
75. KHATUWALA REALCON PRIVATE LIMITED
76. MACKENZIE BARTER PRIVATE LIMITED
77. MAGNITUDE NIRMAM PRIVATE LIMITED
78. MONTIQUZE REAL ESTATE PRIVATE LIMITED
79. MAHARAJA INFRASTRUCTURE PRIVATE LIMITED
80. MAHATRU INFRA PRIVATE LIMITED
81. MANGALNIVYAK BUSINESS PRIVATE LIMITED
82. MARY LAND ENCLAVE PRIVATE LIMITED
83. MONEYFOLD BUILDERS PRIVATE LIMITED
84. MONEYFOLD COMPLEX PRIVATE LIMITED
85. MONEYFOLD HOUSING PRIVATE LIMITED
86. MOREDADI MERCHANTS PRIVATE LIMITED
87. MORMARKUT ENCLAVE PRIVATE LIMITED
88. MORMARKUT GRHA NIRMAM PRIVATE LIMITED
89. MORMARKUT HOUSING PRIVATE LIMITED
90. MORMARKUT INFRACON PRIVATE LIMITED
91. MORMARKUT INFRASTRUCTURE PRIVATE LIMITED
92. MORMARKUT NIRMAM PRIVATE LIMITED
93. MORMARKUT PROJECTS PRIVATE LIMITED
94. MORMARKUT PROMOTERS PRIVATE LIMITED
95. MORMARKUT REAL ESTATE PRIVATE LIMITED
96. MORMARKUT REALTCH PRIVATE LIMITED
97. MULTIFOLD VINMAY PRIVATE LIMITED
98. PACIFY COMPLEX PRIVATE LIMITED
99. PACIFY ENCLAVE PRIVATE LIMITED
100. PACIFY MRSSE PRIVATE LIMITED
101. PACIFY INFRACON PRIVATE LIMITED
102. PACIFY TOWER PRIVATE LIMITED
103. PARMAKANT TREXIM PRIVATE LIMITED
104. PARSLEY BARTER PRIVATE LIMITED
105. PATNAI ANHAS PRIVATE LIMITED
106. PERVINKLE PROMOTERS PRIVATE LIMITED
107. POWER POINT BUILDCON PRIVATE LIMITED
108. POWER POINT DEALERS PRIVATE LIMITED
109. POWER POINT REALTY PRIVATE LIMITED
110. POWER POINT TIE UP PRIVATE LIMITED
111. POWER POINT TRACOM PRIVATE LIMITED
112. PRADYUMNA HOUSING PRIVATE LIMITED
113. PRADYUMNA PROMOTERS PRIVATE LIMITED
114. PRADYUMNA REALTORS PRIVATE LIMITED
115. PREMIO TRADERS PRIVATE LIMITED
116. RASBERRY ENCLAVE PRIVATE LIMITED
117. RICHARD VINCOM PRIVATE LIMITED
118. RIVA PROJECTS PRIVATE LIMITED
119. ROSEBUD COMMERCIAL PRIVATE LIMITED
120. ROUND HEIGHTS PRIVATE LIMITED
121. SAMRUDHURIN NIRMAM PRIVATE LIMITED
122. SCARLETT NIRMAM PRIVATE LIMITED
123. SANTOSHAR COMPLEX PRIVATE LIMITED
124. SIDDHA PROJECTS PRIVATE LIMITED
125. SNOWBALL IMPEX PRIVATE LIMITED
126. SOMESHWARA COMPLEX PRIVATE LIMITED
127. LIMITEDSOMESHWARA ENCLAVE PRIVATE LIMITED
128. STAEFAST PROPERTIES PRIVATE LIMITED
129. SUN VIEW INFRACON PRIVATE LIMITED
130. SURJAMATA PROMOTERS PRIVATE LIMITED
131. TANGORBE VILLA PRIVATE LIMITED
132. TEJASWAN HOUSING PRIVATE LIMITED
133. TIFFANY BARTER PRIVATE LIMITED
134. TOKEN SALES PRIVATE LIMITED
135. TROIKOPATI NIRMAM PRIVATE LIMITED
136. TROPIC VANARA PRIVATE LIMITED
137. UNNATI SALES PRIVATE LIMITED
138. VERBENA COMMOTRAGE PRIVATE LIMITED
139. VISHWARAJA CONSTRUCTIONS PRIVATE LIMITED
140. VISHWARAJA HOUSING PRIVATE LIMITED
141. VISHWARAJA INFRADEVE PRIVATE LIMITED
142. VISHWARAJA PROMOTERS PRIVATE LIMITED
143. VRAJESH VENTURES PRIVATE LIMITED
144. WISERCRACK MARKETING PRIVATE LIMITED
145. WOODER VYAPAR PRIVATE LIMITED
146. YADAVRI BUILDERS PRIVATE LIMITED
147. YADAVRI TRADERS PRIVATE LIMITED

Pawanraj
Authorized Signatory

CERTIFICATE OF STRUCTURAL ENGINEER

CERTIFY THAT THE STRUCTURAL DRAWING AND DESIGN OF BOTH THE FOUNDATION AND SUPERSTRUCTURE OF THE BUILDING / BUILDINGS HAS BEEN MADE CONSIDERING THE SOIL TEST REPORT, AS PER THE RULES AND REGULATIONS MADE UNDER THE ACT AND ALSO CONSIDERING ALL POSSIBLE LOADS SEISMIC LOAD AND THE MOMENTS GENERATED BY THE PROPOSED STRUCTURE AS PER THE BUREAU OF INDIAN STANDARD AND NATIONAL BUILDING CODE OF INDIA AND CERTIFIED THAT IT IS SAFE AND STABLE IN ALL RESPECT AND THESE PROVISIONS SHALL BE ADHERED TO DURING THE CONSTRUCTION.

Mainak Majumdar
Mainak Majumdar
B.Sc. (Hons), B.C.E., I.E.C. Eng.
ESE-152/J of CIAC
MI Struct. E (Lond) M.A.S.C.E. (USA)
ESE-48 of
The Calcutta Municipal Corporation

SIGNATURE OF STRUCTURAL ENGR

CERTIFICATE OF ARCHITECT

I CERTIFY THAT ALL THE ARCHITECTURAL DRAWINGS OF THE PROJECT AT B.S.R. (DAG NOS. 815(P), 820, 821, 822, 823, 824, 825, 827, 828, 829(P), 830(P), 830(P), 838, 839, 840, 841, 842, 843, 844, 845, 846, 847, 848, 849, 850(P), 851(P), 852, 853, 854, 855, 856, 857, 858, 859(P) & 638/734 RECORDED UNDER L.R. KHATAN NO. 2022, 2023, 2024, 2025, 2195, 2196, 2197, 2198, 2199, 2200, 2201, 2202, 2203, 2204, 2205, 2206, 2207, 2208, 2209, 2210, 2211, 2212, 2213, 2214, 2246, 2247, 2248, 2249, 2250, 2251, 2252, 2253, 2254, 2273, 2287, 2288, 2289, 2290, 2291, 2292, 2293, 2294, 2295, 2296, 2297, 2298, 2299, 2300, 2301, 2302, 2303, 2304, 2305, 2306, 2307, 2308, 2309, 2310, 2311, 2312, 2313, 2314, 2315, 2316, 2317, 2318, 2319, 2320, 2321, 2322, 2323, 2324, 2325, 2326, 2327, 2328, 2329, 2330, 2331, 2332, 2333, 2334, 2335, 2336, 2337, 2338, 2339, 2340, 2341, 2342, 2343, 2344, 2345, 2346, 2347, 2348, 2349, 2350, 2351, 2352, 2353, 2354, 2355, 2356, 2357, 2358, 2359, 2360, 2361, 2362, 2363, 2364, 2365, 2366, 2367, 2368, 2369, 2370, 2371, 2372, 2373, 2374, 2375, 2376, 2377, 2378, 2379, 2380, 2381, 2382, 2383, 2384, 2385, 2386, 2387, 2388, 2389, 2390, 2391, 2392, 2393, 2394, 2395, 2396, 2397, 2398, 2399, 2400, 2401, 2402, 2403, 2404, 2405, 2406, 2407, 2408, 2409, 2410, 2411, 2412, 2413, 2414, 2415, 2416, 2417, 2418, 2419, 2420, 2421, 2422, 2423, 2424, 2425, 2426, 2427, 2428, 2429, 2430, 2431, 2432, 2433, 2434, 2435, 2436, 2437, 2438, 2439, 2440, 2441, 2442, 2443, 2444, 2445, 2446, 2447, 2448, 2449, 2450, 2451, 2452, 2453, 2454, 2455, 2456, 2457, 2458, 2459, 2460, 2461, 2462, 2463, 2464, 2465, 2466, 2467, 2468, 2469, 2470, 2471, 2472, 2473, 2474, 2475, 2476, 2477, 2478, 2479, 2480, 2481, 2482, 2483, 2484, 2485, 2486, 2487, 2488, 2489, 2490, 2491, 2492, 2493, 2494, 2495, 2496, 2497, 2498, 2499, 2500, 2501, 2502, 2503, 2504, 2505, 2506, 2507, 2508, 2509, 2510, 2511, 2512, 2513, 2514, 2515, 2516, 2517, 2518, 2519, 2520, 2521, 2522, 2523, 2524, 2525, 2526, 2527, 2528, 2529, 2530, 2531, 2532, 2533, 2534, 2535, 2536, 2537, 2538, 2539, 2540, 2541, 2542, 2543, 2544, 2545, 2546, 2547, 2548, 2549, 2550, 2551, 2552, 2553, 2554, 2555, 2556, 2557, 2558, 2559, 2560, 2561, 2562, 2563, 2564, 2565, 2566, 2567, 2568, 2569, 2570, 2571, 2572, 2573, 2574, 2575, 2576, 2577, 2578, 2579, 2580, 2581, 2582, 2583, 2584, 2585, 2586, 2587, 2588, 2589, 2590, 2591, 2592, 2593, 2594, 2595, 2596, 2597, 2598, 2599, 2600, 2601, 2602, 2603, 2604, 2605, 2606, 2607, 2608, 2609, 2610, 2611, 2612, 2613, 2614, 2615, 2616, 2617, 2618, 2619, 2620, 2621, 2622, 2623, 2624, 2625, 2626, 2627, 2628, 2629, 2630, 2631, 2632, 2633, 2634, 2635, 2636, 2637, 2638, 2639, 2640, 2641, 2642, 2643, 2644, 2645, 2646, 2647, 2648, 2649, 2650, 2651, 2652, 2653, 2654, 2655, 2656, 2657, 2658, 2659, 2660, 2661, 2662, 2663, 2664, 2665, 2666, 2667, 2668, 2669, 2670, 2671, 2672, 2673, 2674, 2675, 2676, 2677, 2678, 2679, 2680, 2681, 2682, 2683, 2684, 2685, 2686, 2687, 2688, 2689, 2690, 2691, 2692, 2693, 2694, 2695, 2696, 2697, 2698, 2699, 2700, 2701, 2702, 2703, 2704, 2705, 2706, 2707, 2708, 2709, 2710, 2711, 2712, 2713, 2714, 2715, 2716, 2717, 2718, 2719, 2720, 2721, 2722, 2723, 2724, 2725, 2726, 2727, 2728, 2729, 2730, 2731, 2732, 2733, 2734, 2735, 2736, 2737, 2738, 2739, 2740, 2741, 2742, 2743, 2744, 2745, 2746, 2747, 2748, 2749, 2750, 2751, 2752, 2753, 2754, 2755, 2756, 2757, 2758, 2759, 2760, 2761, 2762, 2763, 2764, 2765, 2766, 2767, 2768, 2769, 2770, 2771, 2772, 2773, 2774, 2775, 2776, 2777, 2778, 2779, 2780, 2781, 2782, 2783, 2784, 2785, 2786, 2787, 2788, 2789, 2790, 2791, 2792, 2793, 2794, 2795, 2796, 2797, 2798, 2799, 2800, 2801, 2802, 2803, 2804, 2805, 2806, 2807, 2808, 2809, 2810, 2811, 2812, 2813, 2814, 2815, 2816, 2817, 2818, 2819, 2820, 2821, 2822, 2823, 2824, 2825, 2826, 2827, 2828, 2829, 2830, 2831, 2832, 2833, 2834, 2835, 2836, 2837, 2838, 2839, 2840, 2841, 2842, 2843, 2844, 2845, 2846, 2847, 2848, 2849, 2850, 2851, 2852, 2853, 2854, 2855, 2856, 2857, 2858, 2859, 2860, 2861, 2862, 2863, 2864, 2865, 2866, 2867, 2868, 2869, 2870, 2871, 2872, 2873, 2874, 2875, 2876, 2877, 2878, 2879, 2880, 2881, 2882, 2883, 2884, 2885, 2886, 2887, 2888, 2889, 2890, 2891, 2892, 2893, 2894, 2895, 2896, 2897, 2898, 2899, 2900, 2901, 2902, 2903, 2904, 2905, 2906, 2907, 2908, 2909, 2910, 2911, 2912, 2913, 2914, 2915, 2916, 2917, 2918, 2919, 2920, 2921, 2922, 2923, 2924, 2925, 2926, 2927, 2928, 2929, 2930, 2931, 2932, 2933, 2934, 2935, 2936, 2937, 2938, 2939, 2940, 2941, 2942, 2943, 2944, 2945, 2946, 2947, 2948, 2949, 2950, 2951, 2952, 2953, 2954, 2955, 2956, 2957, 2958, 2959, 2960, 2961, 2962, 2963, 2964, 2965, 2966, 2967, 2968, 2969, 2970, 2971, 2972, 2973, 2974, 2975, 2976, 2977, 2978, 2979, 2980, 2981, 2982, 2983, 2984, 2985, 2986, 2987, 2988, 2989, 2990, 2991, 2992, 2993, 2994, 2995, 2996, 2997, 2998, 2999, 3000, 3001, 3002, 3003, 3004, 3005, 3006, 3007, 3008, 3009, 3010, 3011, 3012, 3013, 3014, 3015, 3016, 3017, 3018, 3019, 3020, 3021, 3022, 3023, 3024, 3025, 3026, 3027, 3028, 3029, 3030, 3031, 3032, 3033, 3034, 3035, 3036, 3037, 3038, 3039, 3040, 3041, 3042, 3043, 3044, 3045, 3046, 3047, 3048, 3049, 3050, 3051, 3052, 3053, 3054, 3055, 3056, 3057, 3058, 3059, 3060, 3061, 3062, 3063, 3064, 3065, 3066, 3067, 3068, 3069, 3070, 3071, 3072, 3073, 3074, 3075, 3076, 3077, 3078, 3079, 3080, 3081, 3082, 3083, 3084, 3085, 3086, 3087, 3088, 3089, 3090, 3091, 3092, 3093, 3094, 3095, 3096, 3097, 3098, 3099, 3100, 3101, 3102, 3103, 3104, 3105, 3106, 3107, 3108, 3109, 3110, 3111, 3112, 3113, 3114, 3115, 3116, 3117, 3118, 3119, 3120, 3121, 3122, 3123, 3124, 3125, 3126, 3127, 3128, 3129, 3130, 3131, 3132, 3133, 3134, 3135, 3136, 3137, 3138, 3139, 3140, 3141, 3142, 3143, 3144, 3145, 3146, 3147, 3148, 3149, 3150, 3151, 3152, 3153, 3154, 3155, 3156, 3157, 3158, 3159, 3160, 3161, 3162, 3163, 3164, 3165, 3166, 3167, 3168, 3169, 3170, 3171, 3172, 3173, 3174, 3175, 3176, 3177, 3178, 3179, 3180, 3181, 3182, 3183, 3184, 3185, 3186, 3187, 3188, 3189, 3190, 3191, 3192, 3193, 3194, 3195, 3196, 3197, 3198, 3199, 3200, 3201, 3202, 3203, 3204, 3205, 3206, 3207, 3208, 3209, 3210, 3211, 3212, 3213, 3214, 3215, 3216, 3217, 3218, 3219, 3220, 3221, 3222, 3223, 3224, 3225, 3226, 3227, 3228, 3229, 3230, 3231, 3232, 3233, 3234, 3235, 3236, 3237, 3238, 3239, 3240, 3241, 3242, 3243, 3244, 3245, 3246, 3247, 3248, 3249, 3250, 3251, 3252, 3253, 3254, 3255, 3256, 3257, 3258, 3259, 3260, 3261, 3262, 3263, 3264, 3265, 3266, 3267, 3268, 3269, 3270, 3271, 3272, 3273, 3274, 3275, 3276, 3277, 3278, 3279, 3280, 3281, 3282, 3283, 3284, 3285, 3286, 3287, 3288, 3289, 3290, 3291, 3292, 3293, 3294, 3295, 3296, 3297, 3298, 3299, 3300, 3301, 3302, 3303, 3304, 3305, 3306, 3307, 3308, 3309, 3310, 3311, 3312, 3313, 3314, 3315, 3316, 3317, 3318, 3319, 3320, 3321, 3322, 3323, 3324, 3325, 3326, 3327, 3328, 3329, 3330, 3331, 3332, 3333, 3334, 3335, 3336, 3337, 3338, 3339, 3340, 3341, 3342, 3343, 3344, 3345, 3346, 3347, 3348, 3349, 3350, 3351, 3352, 3353, 3354, 3355, 3356, 3357, 3358, 3359, 3360, 3361, 3362, 3363, 3364, 3365, 3366, 3367, 3368, 3369, 3370, 3371, 3372, 3373, 3374, 3375, 3376, 3377, 3378, 3379, 3380, 3381, 3382, 3383, 3384, 3385, 3386, 3387, 3388, 3389, 3390, 3391, 3392, 3393, 3394, 3395, 3396, 3397, 3398, 3399, 3400, 3401, 3402, 3403, 3404, 3405, 3406, 3407, 3408, 3409, 3410, 3411, 3412, 3413, 3414, 3415, 3416, 3417, 3418, 3419, 3420, 3421, 3422, 3423, 3424, 3425, 3426, 3427, 3428, 3429, 3430, 3431, 3432, 3433, 3434, 3435, 3436, 3437, 3438, 3439, 3440, 3441, 3442, 3443, 3444, 3445, 3446, 3447, 3448, 3449, 3450, 3451, 3452, 3453, 3454, 3455, 3456, 3457, 3458, 3459, 3460, 3461, 3462, 3463, 3464, 3465, 3466, 3467, 3468, 3469, 3470, 3471, 3472, 3473, 3474, 3475, 3476, 3477, 3478, 3479, 3480, 3481, 3482, 3483, 3484, 3485, 3486, 3487, 3488, 3489, 3490, 3491, 3492, 3493, 3494, 3495, 3496, 3497, 3498, 3499, 3500, 3501, 3502, 3503, 3504, 3505, 3506, 3507, 3508, 3509, 3510, 3511, 3512, 3513, 3514, 3515, 3516, 3517, 3518, 3519, 3520, 3521, 3522, 3523, 3524, 3525, 3526, 3527, 3528, 3529, 3530, 3531, 3532, 3533, 3534, 3535, 3536, 3537, 3538, 3539, 3540, 3541, 3542, 3543, 3544, 3545, 3546, 3547, 3548, 3549, 3550, 3551, 3552, 3553, 3554, 3555, 3556, 3557, 3558, 3559, 3560, 3561, 3562, 3563, 3564, 3565, 3566, 3567, 3568, 3569, 3570, 3571, 3572, 3573, 3574, 3575, 3576, 3577, 3578, 3579, 3580, 3581, 3582, 3583, 3584, 3585, 3586, 3587, 3588, 3589, 3590, 3591, 3592, 3593, 3594, 3595, 3596, 3597, 3598, 3599, 3600, 3601, 3602, 3603, 3604, 3605, 3606, 3607, 3608, 3609, 3610, 3611, 3612, 3613, 3614, 3615, 3616, 3617, 3618, 3619, 3620, 3621, 3622, 3623, 3624, 3625, 3626, 3627, 3628, 3629, 3630, 3631, 3632, 3633, 3634, 3635, 3636, 3637, 3638, 3639, 3640, 3641, 3642, 3643, 3644, 3645, 3646, 3647, 3648, 3649, 3650, 3651, 3652, 3653, 3654, 3655, 3656, 3657, 3658, 3659, 3660, 3661, 3662, 3663, 3664, 3665, 3666, 3667, 3668, 3669, 3670, 3671, 3672, 3673, 3674, 3675, 3676, 3677, 3678, 3679, 3680, 3681, 3682

28/44
BL-FC

ARCHITECT:
BARNIKA CHATTOPADHYAY
CIVIL/STRUCTURAL ENGINEER:
MANOJ KANTI MAJUMDER
GEO-TECHNICAL ENGINEER:
SHYAMAL KUMAR MITRA
TOWN PLANNER/URBAN DESIGNER:
BARNIKA CHATTOPADHYAY
STRUCTURAL REVIEWER:
MAINAK MAJUMDER

Enrollment No:
AHR/NKDA/10/00203
Enrollment No:
STR/NKDA/10/00019
Enrollment No:
OTE-HIDCO/09/00010
Enrollment No:
TPER/NKDA/10/00022
Enrollment No:
STR/NKDA/14/00001

STRUCTURAL DRAWINGS, STRUCTURAL
DESIGN CALCULATIONS & SCL TEST
REPORT ARE NOT CHECKED AND KEPT
FOR RECORDS ONLY.

NEW TOWN KOLKATA DEVELOPMENT AUTHORITY
No Objection Certificate for
Construction of Building for Construction Purpose

Map No. 6276 (B)/NKDA/BPS-04(09)/2014

Date: 03 NOV 2015

Building: B+G+13 Storied Residential Building at Plot No.
620 to 625, 627, 628, 615 (P), 629 (P), 630 (P), 632 (P), 638 to
649, 650 (P), 651 (P), 652 to 657, 589/658 (P) & 639/734.
Mouza - Raigachi, J.L. No. 12, 24 Pgs (N).

Note: The Proposal is recommended for approval
subject to submission of Environment clearance.

Sankar Saha
-2-12-15
Executive Officer
Rajarhat Panchayat Samity

Sayanti Majumder
Assistant Architect
New Town Kolkata Development Authority

S. Chatterjee
SURESH CHATTERJEE
Chief Architect
New Town Kolkata Development Authority