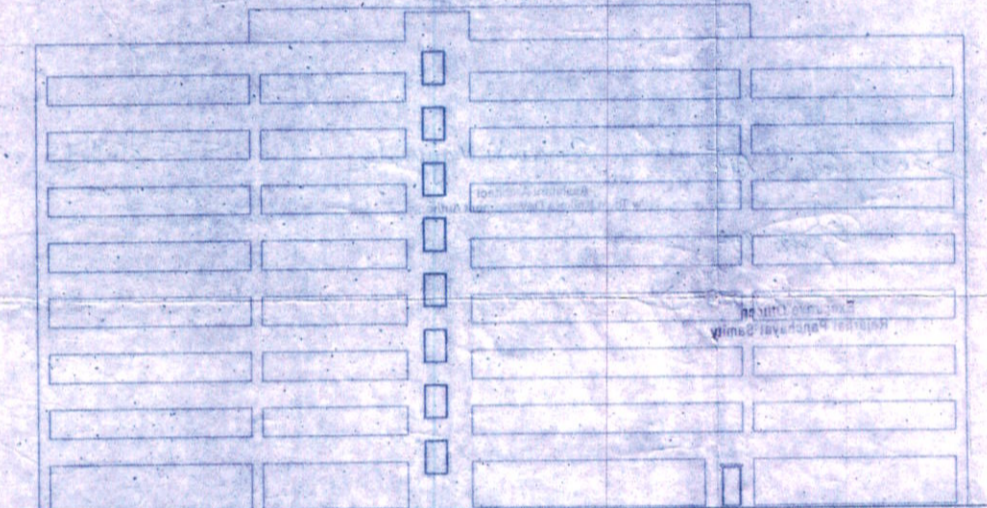
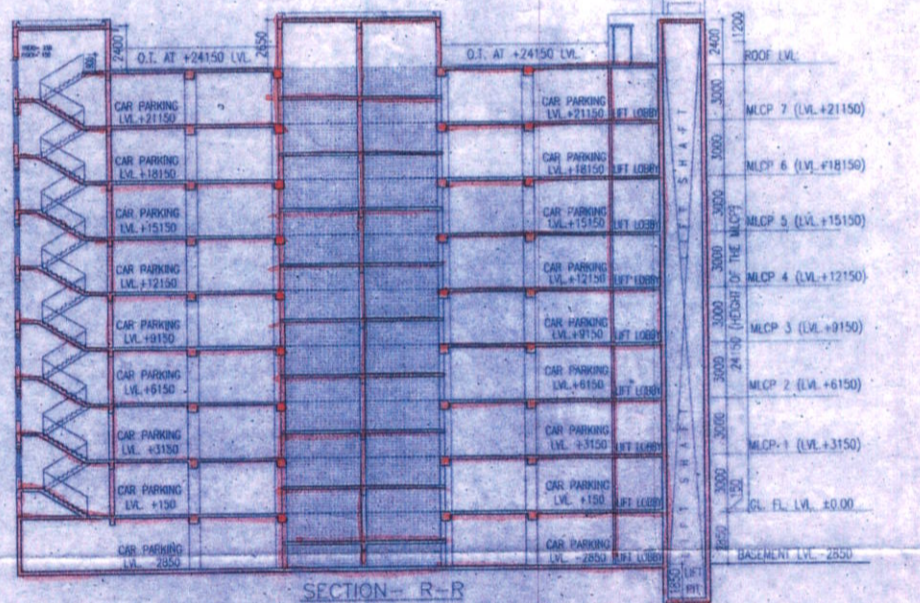


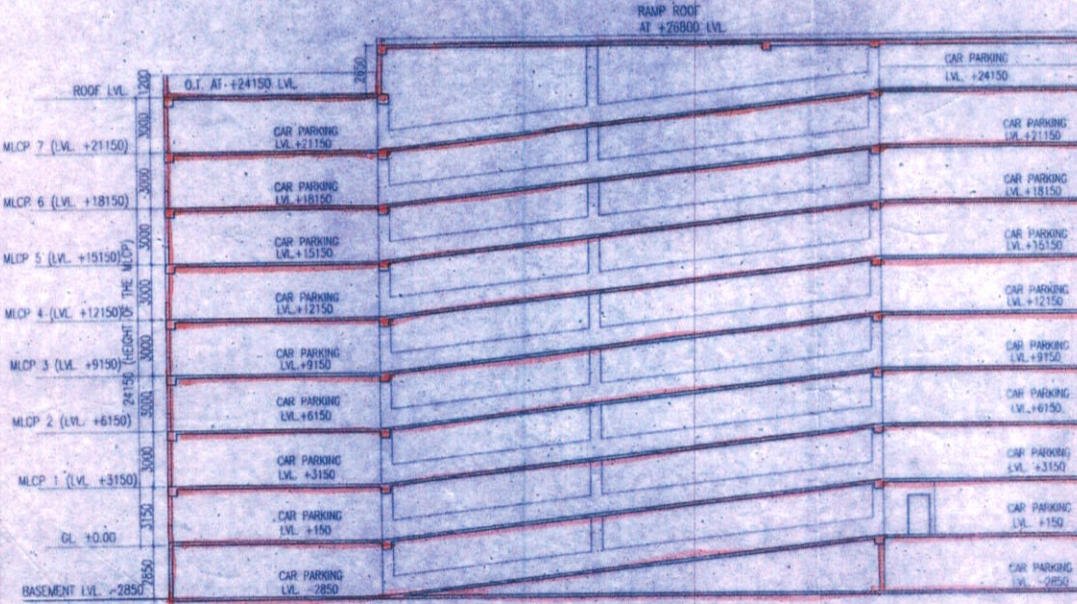
ROOF PLAN



ELEVATION



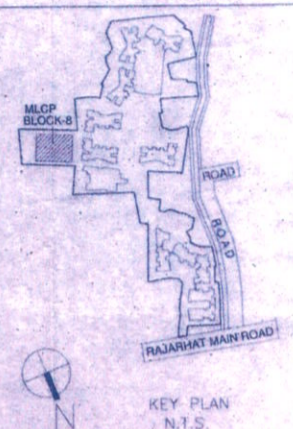
SECTION - R-R



SECTION - Q-Q

NAME OF OWNER  
NAME OF THE COMPANY

1. BIRSH SALES PRIVATE LIMITED
2. ADHARSEELA DEALERS PRIVATE LIMITED
3. ADHARSEELA TIE UP PRIVATE LIMITED
4. ADHARSEELA TOWER PRIVATE LIMITED
5. ACAPATHI BENTLEY PRIVATE LIMITED
6. ACYUMEN COMPLEX PRIVATE LIMITED
7. ACYUMEN HOUSING PRIVATE LIMITED
8. ADHAR ENCLAVE PRIVATE LIMITED
9. ADHAR ENCLAVE PRIVATE LIMITED
10. ADHAR ENCLAVE PRIVATE LIMITED
11. ADHAR ENCLAVE PRIVATE LIMITED
12. ADHAR ENCLAVE PRIVATE LIMITED
13. ADHAR ENCLAVE PRIVATE LIMITED
14. ADHAR ENCLAVE PRIVATE LIMITED
15. ADHAR ENCLAVE PRIVATE LIMITED
16. ADHAR ENCLAVE PRIVATE LIMITED
17. ADHAR ENCLAVE PRIVATE LIMITED
18. ADHAR ENCLAVE PRIVATE LIMITED
19. ADHAR ENCLAVE PRIVATE LIMITED
20. ADHAR ENCLAVE PRIVATE LIMITED
21. ADHAR ENCLAVE PRIVATE LIMITED
22. ADHAR ENCLAVE PRIVATE LIMITED
23. ADHAR ENCLAVE PRIVATE LIMITED
24. ADHAR ENCLAVE PRIVATE LIMITED
25. ADHAR ENCLAVE PRIVATE LIMITED
26. ADHAR ENCLAVE PRIVATE LIMITED
27. ADHAR ENCLAVE PRIVATE LIMITED
28. ADHAR ENCLAVE PRIVATE LIMITED
29. ADHAR ENCLAVE PRIVATE LIMITED
30. ADHAR ENCLAVE PRIVATE LIMITED
31. ADHAR ENCLAVE PRIVATE LIMITED
32. ADHAR ENCLAVE PRIVATE LIMITED
33. ADHAR ENCLAVE PRIVATE LIMITED
34. ADHAR ENCLAVE PRIVATE LIMITED
35. ADHAR ENCLAVE PRIVATE LIMITED
36. ADHAR ENCLAVE PRIVATE LIMITED
37. ADHAR ENCLAVE PRIVATE LIMITED
38. ADHAR ENCLAVE PRIVATE LIMITED
39. ADHAR ENCLAVE PRIVATE LIMITED
40. ADHAR ENCLAVE PRIVATE LIMITED
41. ADHAR ENCLAVE PRIVATE LIMITED
42. ADHAR ENCLAVE PRIVATE LIMITED
43. ADHAR ENCLAVE PRIVATE LIMITED
44. ADHAR ENCLAVE PRIVATE LIMITED
45. ADHAR ENCLAVE PRIVATE LIMITED
46. ADHAR ENCLAVE PRIVATE LIMITED
47. ADHAR ENCLAVE PRIVATE LIMITED
48. ADHAR ENCLAVE PRIVATE LIMITED
49. ADHAR ENCLAVE PRIVATE LIMITED
50. ADHAR ENCLAVE PRIVATE LIMITED
51. ADHAR ENCLAVE PRIVATE LIMITED
52. ADHAR ENCLAVE PRIVATE LIMITED
53. ADHAR ENCLAVE PRIVATE LIMITED
54. ADHAR ENCLAVE PRIVATE LIMITED
55. ADHAR ENCLAVE PRIVATE LIMITED
56. ADHAR ENCLAVE PRIVATE LIMITED
57. ADHAR ENCLAVE PRIVATE LIMITED
58. ADHAR ENCLAVE PRIVATE LIMITED
59. ADHAR ENCLAVE PRIVATE LIMITED
60. ADHAR ENCLAVE PRIVATE LIMITED
61. ADHAR ENCLAVE PRIVATE LIMITED
62. ADHAR ENCLAVE PRIVATE LIMITED
63. ADHAR ENCLAVE PRIVATE LIMITED
64. ADHAR ENCLAVE PRIVATE LIMITED
65. ADHAR ENCLAVE PRIVATE LIMITED
66. ADHAR ENCLAVE PRIVATE LIMITED
67. ADHAR ENCLAVE PRIVATE LIMITED
68. ADHAR ENCLAVE PRIVATE LIMITED
69. ADHAR ENCLAVE PRIVATE LIMITED
70. ADHAR ENCLAVE PRIVATE LIMITED
71. ADHAR ENCLAVE PRIVATE LIMITED
72. ADHAR ENCLAVE PRIVATE LIMITED
73. ADHAR ENCLAVE PRIVATE LIMITED
74. ADHAR ENCLAVE PRIVATE LIMITED
75. ADHAR ENCLAVE PRIVATE LIMITED
76. ADHAR ENCLAVE PRIVATE LIMITED
77. ADHAR ENCLAVE PRIVATE LIMITED
78. ADHAR ENCLAVE PRIVATE LIMITED
79. ADHAR ENCLAVE PRIVATE LIMITED
80. ADHAR ENCLAVE PRIVATE LIMITED
81. ADHAR ENCLAVE PRIVATE LIMITED
82. ADHAR ENCLAVE PRIVATE LIMITED
83. ADHAR ENCLAVE PRIVATE LIMITED
84. ADHAR ENCLAVE PRIVATE LIMITED
85. ADHAR ENCLAVE PRIVATE LIMITED
86. ADHAR ENCLAVE PRIVATE LIMITED
87. ADHAR ENCLAVE PRIVATE LIMITED
88. ADHAR ENCLAVE PRIVATE LIMITED
89. ADHAR ENCLAVE PRIVATE LIMITED
90. ADHAR ENCLAVE PRIVATE LIMITED
91. ADHAR ENCLAVE PRIVATE LIMITED
92. ADHAR ENCLAVE PRIVATE LIMITED
93. ADHAR ENCLAVE PRIVATE LIMITED
94. ADHAR ENCLAVE PRIVATE LIMITED
95. ADHAR ENCLAVE PRIVATE LIMITED
96. ADHAR ENCLAVE PRIVATE LIMITED
97. ADHAR ENCLAVE PRIVATE LIMITED
98. ADHAR ENCLAVE PRIVATE LIMITED
99. ADHAR ENCLAVE PRIVATE LIMITED
100. ADHAR ENCLAVE PRIVATE LIMITED



KEY PLAN  
N.T.S.

SCHEDULE OF DOORS & WINDOWS			
NO.	SILL	LINTEL	SIZE
D	2150		1500X2150
D1	2150		1200X2150
D2	2150		900X2150
D3	2150		750X2150
SD	2150		2400X2150
SD1	2150		2100X2150
SD2	2150		1800X2150
W1	350	2150	2100X1800
W2	350	2150	1800X1800
W3	350	2150	1200X1800
W4	1100	2150	1200X1050
W4A	1100	2150	1000X1050
W5	350	2150	850X1800
W6	1250	2150	600X900
SW	AS PER SITE		

CERTIFICATE OF STRUCTURAL ENGINEER

CERTIFY THAT THE STRUCTURAL DRAWING AND DESIGN OF BOTH THE FOUNDATION AND SUPERSTRUCTURE OF THE BUILDING / BUILDINGS HAS BEEN MADE CONSIDERING THE SOIL TEST REPORT, AS PER THE RULES AND REGULATIONS MADE UNDER THE ACT AND ALSO CONSIDERING ALL POSSIBLE LOADS, SEISMIC LOAD AND THE MOMENTS GENERATED BY THE PROPOSED STRUCTURE AS PER THE BUREAU OF INDIAN STANDARD AND NATIONAL BUILDING CODE OF INDIA AND CERTIFIED THAT IT IS SAFE AND STABLE IN ALL RESPECT AND THESE PROVISIONS SHALL BE ADHERED TO DURING THE CONSTRUCTION.

*Mainak Majumdar*  
**MANOJ KANTI MAJUMDAR**  
 B.Sc. (Hons), B.C.E., F.I.E.C. (Engg.)  
 M. Struct. E. (Lond) M.A.S.C.E. (USA)  
 Member of  
 The Calcutta Municipal Corporation

SIGNATURE OF STRUCTURAL ENGG.

CERTIFICATE OF ARCHITECT

I CERTIFY THAT ALL THE ARCHITECTURAL DRAWINGS OF THE PROJECT AT R.S.L.R. DAG NOS. 815(P), 620, 621, 622, 623, 624, 625, 627, 628, 629(P), 630(P), 631(P), 632(P), 633, 639, 640, 641, 642, 643, 644, 645, 646, 647, 648, 649, 650(P), 651(P), 652, 653, 654, 655, 656, 657, 658, 659(P), 659/734 RECORDED UNDER L.R. KHATAN NOS. 2022, 2023, 2024, 2025, 2199, 2194, 2195, 2196, 2197, 2198, 2199, 2200, 2201, 2202, 2203, 2204, 2205, 2206, 2207, 2208, 2209, 2210, 2211, 2212, 2213, 2214, 2446, 2447, 2448, 2449, 2450, 2451, 2452, 2453, 2454, 2473, 2587, 2618, 2723, 2774, 2820, 2826, 2842, 2843, 2844, 2845, 2846, 2847, 2848, 2849, 2850, 2851, 2852, 2853, 2854, 2855, 2856, 2857, 2858, 2859, 2860, 2861, 2862, 2863, 2864, 2865, 2866, 2867, 2868, 2869, 2870, 2871, 2872, 2873, 2874, 2875, 2876, 2877, 2878, 2879, 2880, 2881, 2882, 2883, 2884, 2885, 2886, 2887, 2888, 2889, 2890, 2891, 2892, 2893, 2894, 2895, 2896, 2897, 2898, 2899, 2900, 2901, 2902, 2903, 2904, 2905, 2906, 2907, 2908, 2909, 2910, 2911, 2912, 2913, 2914, 2915, 2916, 2917, 2918, 2919, 2920, 2921, 2922, 2923, 2924, 2925, 2926, 2927, 2928, 2929, 2930, 2931, 2932, 2933, 2934, 2935, 2936, 2937, 2938, 2939, 2940, 2941, 2942, 2943, 2944, 2945, 2946, 2947, 2948, 2949, 2950, 2951, 2952, 2953, 2954, 2955, 2956, 2957, 2958, 2959, 2960, 2961, 2962, 2963, 2964, 2965, 2966, 2967, 2968, 2969, 2970, 2971, 2972, 2973, 2974, 2975, 2976, 2977, 2978, 2979, 2980, 2981, 2982, 2983, 2984, 2985, 2986, 2987, 2988, 2989, 2990, 2991, 2992, 2993, 2994, 2995, 2996, 2997, 2998, 2999, 3000, 3001, 3002, 3003, 3004, 3005, 3006, 3007, 3008, 3009, 3010, 3011, 3012, 3013, 3014, 3015, 3016, 3017, 3018, 3019, 3020, 3021, 3022, 3023, 3024, 3025, 3026, 3027, 3028, 3029, 3030, 3031, 3032, 3033, 3034, 3035, 3036, 3037, 3038, 3039, 3040, 3041, 3042, 3043, 3044, 3045, 3046, 3047, 3048, 3049, 3050, 3051, 3052, 3053, 3054, 3055, 3056, 3057, 3058, 3059, 3060, 3061, 3062, 3063, 3064, 3065, 3066, 3067, 3068, 3069, 3070, 3071, 3072, 3073, 3074, 3075, 3076, 3077, 3078, 3079, 3080, 3081, 3082, 3083, 3084, 3085, 3086, 3087, 3088, 3089, 3090, 3091, 3092, 3093, 3094, 3095, 3096, 3097, 3098, 3099, 3100, 3101, 3102, 3103, 3104, 3105, 3106, 3107, 3108, 3109, 3110, 3111, 3112, 3113, 3114, 3115, 3116, 3117, 3118, 3119, 3120, 3121, 3122, 3123, 3124, 3125, 3126, 3127, 3128, 3129, 3130, 3131, 3132, 3133, 3134, 3135, 3136, 3137, 3138, 3139, 3140, 3141, 3142, 3143, 3144, 3145, 3146, 3147, 3148, 3149, 3150, 3151, 3152, 3153, 3154, 3155, 3156, 3157, 3158, 3159, 3160, 3161, 3162, 3163, 3164, 3165, 3166, 3167, 3168, 3169, 3170, 3171, 3172, 3173, 3174, 3175, 3176, 3177, 3178, 3179, 3180, 3181, 3182, 3183, 3184, 3185, 3186, 3187, 3188, 3189, 3190, 3191, 3192, 3193, 3194, 3195, 3196, 3197, 3198, 3199, 3200, 3201, 3202, 3203, 3204, 3205, 3206, 3207, 3208, 3209, 3210, 3211, 3212, 3213, 3214, 3215, 3216, 3217, 3218, 3219, 3220, 3221, 3222, 3223, 3224, 3225, 3226, 3227, 3228, 3229, 3230, 3231, 3232, 3233, 3234, 3235, 3236, 3237, 3238, 3239, 3240, 3241, 3242, 3243, 3244, 3245, 3246, 3247, 3248, 3249, 3250, 3251, 3252, 3253, 3254, 3255, 3256, 3257, 3258, 3259, 3260, 3261, 3262, 3263, 3264, 3265, 3266, 3267, 3268, 3269, 3270, 3271, 3272, 3273, 3274, 3275, 3276, 3277, 3278, 3279, 3280, 3281, 3282, 3283, 3284, 3285, 3286, 3287, 3288, 3289, 3290, 3291, 3292, 3293, 3294, 3295, 3296, 3297, 3298, 3299, 3300, 3301, 3302, 3303, 3304, 3305, 3306, 3307, 3308, 3309, 3310, 3311, 3312, 3313, 3314, 3315, 3316, 3317, 3318, 3319, 3320, 3321, 3322, 3323, 3324, 3325, 3326, 3327, 3328, 3329, 3330, 3331, 3332, 3333, 3334, 3335, 3336, 3337, 3338, 3339, 3340, 3341, 3342, 3343, 3344, 3345, 3346, 3347, 3348, 3349, 3350, 3351, 3352, 3353, 3354, 3355, 3356, 3357, 3358, 3359, 3360, 3361, 3362, 3363, 3364, 3365, 3366, 3367, 3368, 3369, 3370, 3371, 3372, 3373, 3374, 3375, 3376, 3377, 3378, 3379, 3380, 3381, 3382, 3383, 3384, 3385, 3386, 3387, 3388, 3389, 3390, 3391, 3392, 3393, 3394, 3395, 3396, 3397, 3398, 3399, 3400, 3401, 3402, 3403, 3404, 3405, 3406, 3407, 3408, 3409, 3410, 3411, 3412, 3413, 3414, 3415, 3416, 3417, 3418, 3419, 3420, 3421, 3422, 3423, 3424, 3425, 3426, 3427, 3428, 3429, 3430, 3431, 3432, 3433, 3434, 3435, 3436, 3437, 3438, 3439, 3440, 3441, 3442, 3443, 3444, 3445, 3446, 3447, 3448, 3449, 3450, 3451, 3452, 3453, 3454, 3455, 3456, 3457, 3458, 3459, 3460, 3461, 3462, 3463, 3464, 3465, 3466, 3467, 3468, 3469, 3470, 3471, 3472, 3473, 3474, 3475, 3476, 3477, 3478, 3479, 3480, 3481, 3482, 3483, 3484, 3485, 3486, 3487, 3488, 3489, 3490, 3491, 3492, 3493, 3494, 3495, 3496, 3497, 3498, 3499, 3500, 3501, 3502, 3503, 3504, 3505, 3506, 3507, 3508, 3509, 3510, 3511, 3512, 3513, 3514, 3515, 3516, 3517, 3518, 3519, 3520, 3521, 3522, 3523, 3524, 3525, 3526, 3527, 3528, 3529, 3530, 3531, 3532, 3533, 3534, 3535, 3536, 3537, 3538, 3539, 3540, 3541, 3542, 3543, 3544, 3545, 3546, 3547, 3548, 3549, 3550, 3551, 3552, 3553, 3554, 3555, 3556, 3557, 3558, 3559, 3560, 3561, 3562, 3563, 3564, 3565, 3566, 3567, 3568, 3569, 3570, 3571, 3572, 3573, 3574, 3575, 3576, 3577, 3578, 3579, 3580, 3581, 3582, 3583, 3584, 3585, 3586, 3587, 3588, 3589, 3590, 3591, 3592, 3593, 3594, 3595, 3596, 3597, 3598, 3599, 3600, 3601, 3602, 3603, 3604, 3605, 3606, 3607, 3608, 3609, 3610, 3611, 3612, 3613, 3614, 3615, 3616, 3617, 3618, 3619, 3620, 3621, 3622, 3623, 3624, 3625, 3626, 3627, 3628, 3629, 3630, 3631, 3632, 3633, 3634, 3635, 3636, 3637, 3638, 3639, 3640, 3641, 3642, 3643, 3644, 3645, 3646, 3647, 3648, 3649, 3650, 3651, 3652, 3653, 3654, 3655, 3656, 3657, 3658, 3659, 3660, 3661, 3662, 3663, 3664, 3665, 3666, 3667, 3668, 3669, 3670, 3671, 3672, 3673, 3674, 3675, 3676, 3677, 3678, 3679, 3680, 3681, 3682, 3683, 3684, 3685, 3686, 3687, 3688, 3689, 3690, 3691, 3692, 3693, 3694, 3695, 3696, 3697, 3698, 3699, 3700, 3701, 3702, 3703, 3704, 3705, 3706, 3707, 3708, 3709, 3710, 3711, 3712, 3713, 3714, 3715, 3716, 3717, 3718, 3719, 3720, 3721, 3722, 3723, 3724, 3725, 3726, 3727, 3728, 3729, 3730, 3731, 3732, 3733, 3734, 3735, 3736, 3737, 3738, 3739, 3740, 3741, 3742, 3743, 3744, 3745, 3746, 3747, 3748, 3749, 3750, 3751, 3752, 3753, 3754, 3755, 3756, 3757, 3758, 3759, 3760, 3761, 3762, 3763, 3764, 3765, 3766, 3767, 3768, 3769, 3770, 3771, 3772, 3773, 3774, 3775, 3776, 3777, 3778, 3779, 3780, 3781, 3782, 3783, 3784, 3785, 3786, 3787, 3788, 3789, 3790, 3791, 3792, 3793, 3794, 3795, 3796, 3797, 3798, 3799, 3800, 3801, 3802, 3803, 3804, 3805, 3806, 3807, 3808, 3809, 3810, 3811, 3812, 3813, 3814, 3815, 3816, 3817, 3818, 3819, 3820, 3821, 3822, 3823, 3824, 3825, 3826, 3827, 3828, 3829, 3830, 3831, 3832, 3833, 3834, 3835, 3836, 3837, 3838, 3839, 3840, 3841, 3842, 3843, 3844, 3845, 3846, 3847, 3848, 3849, 3850, 3851, 3852, 3853, 3854, 3855, 3856, 3857, 3858, 3859, 3860, 3861, 3862, 3863, 3864, 3865, 3866, 3867, 3868, 3869, 3870, 3871, 3872, 3873, 3874, 3875, 3876, 3877, 3878, 3879, 3880, 3881, 3882, 3883, 3884, 3885, 3886, 3887, 3888, 3889, 3890, 3891, 3892, 3893, 3894, 3895, 3896, 3897, 3898, 3899, 3900, 3901, 3902, 3903, 3904, 3905, 3906, 3907, 3908, 3909, 3910, 3911, 3912, 3913, 3914, 3915, 3916, 3917, 3918, 3919, 3920, 3921, 3922, 3923, 3924, 3925, 3926, 3927, 3928, 3929, 3930, 3931, 3932, 3933, 3934, 3935, 3936, 3937, 3938, 3939, 3940, 3941, 3942, 3943, 3944, 3945, 3946, 3947, 3948, 3949, 3950, 3951, 3952, 3953, 3954, 3955, 3956, 3957, 3958, 3959, 3960, 3961, 3962, 3963, 3964, 3965, 3966, 3967, 3968, 3969, 3970, 3971, 3972, 3973, 3974, 3975, 3976, 3977, 3978, 3979, 3980, 3981, 3982, 3983, 3984, 3985, 3986, 3987, 3988, 3989, 3990, 3991, 3992, 3993, 3994, 3995, 3996, 3997, 3998, 3999, 4000.

SIGNATURE OF ARCHITECT

*Barnika Chattopadhyay*  
**BARNIKA CHATTOPADHYAY**  
 Regd. Architect  
 New Town Kolkata Development Authority  
 Enrollment No. 2019/JA/10/00203  
 ACHR

SIGNATURE OF TOWN PLANNER OR URBAN DESIGNER

*Mainak Majumdar*  
**Mainak Majumdar**  
 B.C.E., M.C.E. (Struct)  
 ESE-1152/1 of CMC  
 STER / NKDA / 10 / 00020

SIGNATURE OF GEO-TECHNICAL ENGINEER

*Bhyanak Kumar Mitra*  
**BHYANAK KUMAR MITRA**, B.E. (CIVIL)  
 GEO-TECHNICAL ENGINEER  
 ENROLLMENT NO. GTER-HDCC/06/00019

SIGNATURE OF ARCHITECT

*Jayprakash Bharat Kumar Agrawal*  
**JAYPRAKASH BHARAT KUMAR AGRAWAL**  
 B. Arch., A.I.A.  
 Reg. No. CA / 88 / 10098  
 ARCHITECT SL. NO. 132(A)

SIGNATURE OF ARCHITECT

*Jayprakash Bharat Kumar Agrawal*  
**JAYPRAKASH BHARAT KUMAR AGRAWAL**  
 B. Arch., A.I.A.  
 Reg. No. CA / 88 / 10098  
 ARCHITECT SL. NO. 132(A)

SIGNATURE OF ARCHITECT

*Jayprakash Bharat Kumar Agrawal*  
**JAYPRAKASH BHARAT KUMAR AGRAWAL**  
 B. Arch., A.I.A.  
 Reg. No. CA / 88 / 10098  
 ARCHITECT SL. NO. 132(A)

SIGNATURE OF ARCHITECT

*Jayprakash Bharat Kumar Agrawal*  
**JAYPRAKASH BHARAT KUMAR AGRAWAL**  
 B. Arch., A.I.A.  
 Reg. No. CA / 88 / 10098  
 ARCHITECT SL. NO. 132(A)

SIGNATURE OF ARCHITECT

*Jayprakash Bharat Kumar Agrawal*  
**JAYPRAKASH BHARAT KUMAR AGRAWAL**  
 B. Arch., A.I.A.  
 Reg. No. CA / 88 / 10098  
 ARCHITECT SL. NO. 132(A)

SIGNATURE OF ARCHITECT

*Jayprakash Bharat Kumar Agrawal*  
**JAYPRAKASH BHARAT KUMAR AGRAWAL**



36/44  
BL-8

ARCHITECT:  
BARNIKA CHATTOPADHYAY  
CIVIL/STRUCTURAL ENGINEER:  
MANOJ KANTI MAJUMDER  
GEO-TECHNICAL ENGINEER:  
SHYAMAL KUMAR MITRA  
TOWN PLANNER/URBAN DESIGNER:  
BARNIKA CHATTOPADHYAY  
STRUCTURAL REVIEWER:  
MAINAK MAJUMDER

Enrollment No:  
ACHR/NKDA/10/00203  
Enrollment No:  
STER/NKDA/10/00019  
Enrollment No:  
GTER-HD00109/00010  
Enrollment No:  
TPER/NKDA/10/00022  
Enrollment No:  
STAV/NKDA/10/00001

STRUCTURAL DRAWINGS, STRUCTURAL  
DESIGN CALCULATIONS & SOIL TEST  
REPORT ARE NOT CHECKED AND KEPT  
FOR RECORDS ONLY.

NEW TOWN KOLKATA DEVELOPMENT AUTHORITY  
No Objection Certificate for  
Sanction of Spacing Plan for Construction Purpose

Memo No. 6276 (3)/NKDA/BPS-04 (09)/2014

Date: 03 Nov 2015

Building Particulars B+G+13 storied Residential Building at Dag No. 2  
620 to 625, 627, 628, 615(P), 629 (P), 630 (P), 632 (P),  
638 to 649, 650 (P), 651 (P), 652 to 657, 589/658 (P) &  
639/734. Mouza. Raigachi, S.K. No. 12, 24 Pgs (N).

Note: The Proposal is recommended for approval  
subject to submission of Environment  
Clearance.

Sanctioned & Approved  
2-12-15

Sayanti Majumder  
Assistant Architect  
New Town Kolkata Development Authority

S. Chatterjee  
SUNBRI CHATTERJEE  
Chief Architect  
New Town Kolkata Development Authority

Executive Officer  
Rajarhat Panchayat Samity