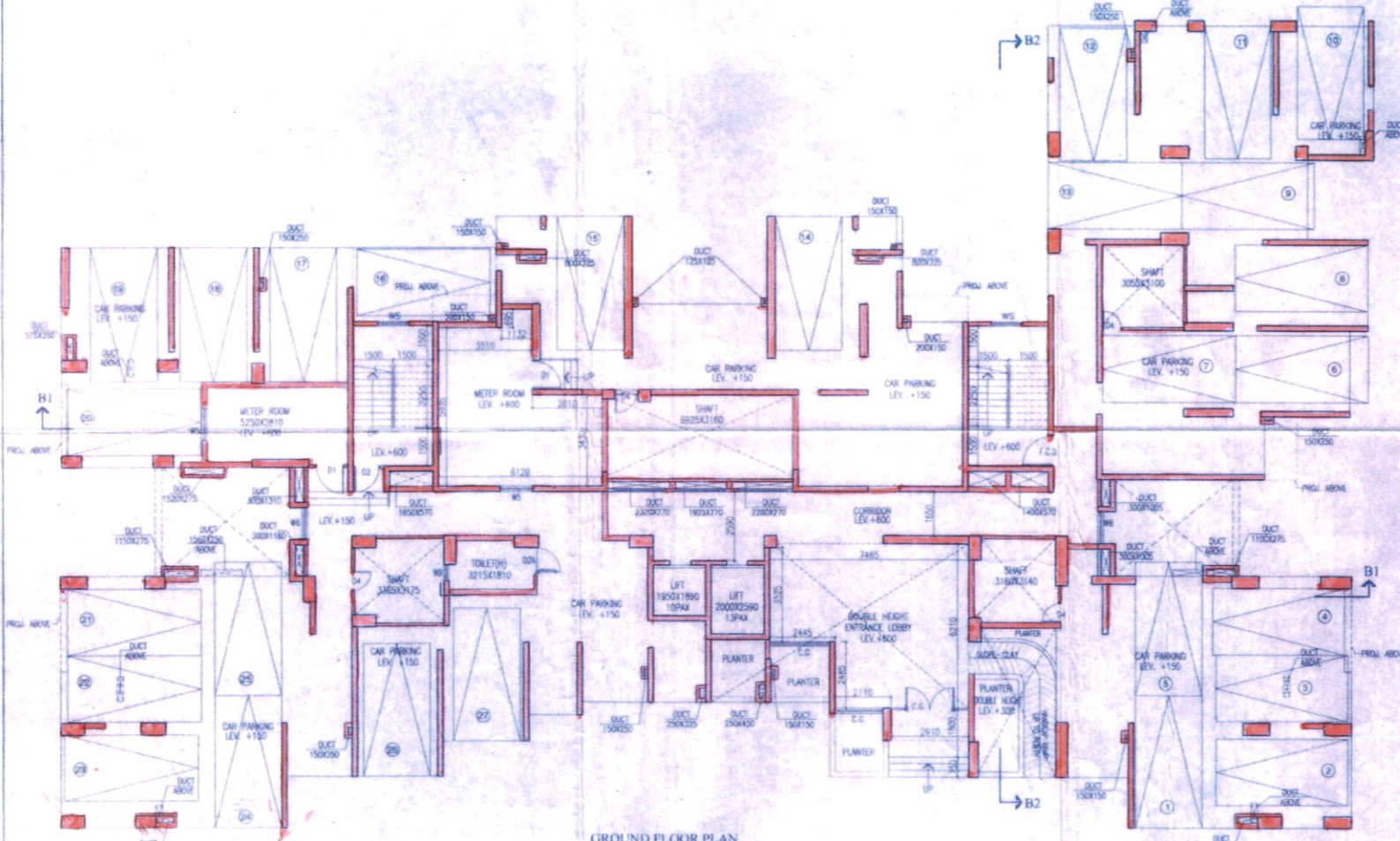
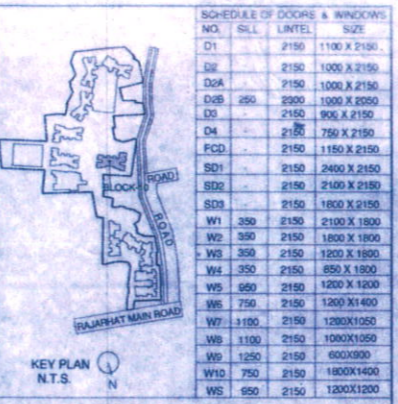


FIRST FLOOR PLAN



GROUND FLOOR PLAN

- NAME OF OWNER
NAME OF THE COMPANY
1. IRISH SALES PRIVATE LIMITED
 2. ADARSHSILA DEALERS PRIVATE LIMITED
 3. ADARSHSILA TOWER PRIVATE LIMITED
 4. ADARSHSILA TOWER PRIVATE LIMITED
 5. ADARSHSILA TOWER PRIVATE LIMITED
 6. ADARSHSILA TOWER PRIVATE LIMITED
 7. ADARSHSILA TOWER PRIVATE LIMITED
 8. ADARSHSILA TOWER PRIVATE LIMITED
 9. ADARSHSILA TOWER PRIVATE LIMITED
 10. ADARSHSILA TOWER PRIVATE LIMITED
 11. ADARSHSILA TOWER PRIVATE LIMITED
 12. ADARSHSILA TOWER PRIVATE LIMITED
 13. ADARSHSILA TOWER PRIVATE LIMITED
 14. ADARSHSILA TOWER PRIVATE LIMITED
 15. ADARSHSILA TOWER PRIVATE LIMITED
 16. ADARSHSILA TOWER PRIVATE LIMITED
 17. ADARSHSILA TOWER PRIVATE LIMITED
 18. ADARSHSILA TOWER PRIVATE LIMITED
 19. ADARSHSILA TOWER PRIVATE LIMITED
 20. ADARSHSILA TOWER PRIVATE LIMITED
 21. ADARSHSILA TOWER PRIVATE LIMITED
 22. ADARSHSILA TOWER PRIVATE LIMITED
 23. ADARSHSILA TOWER PRIVATE LIMITED
 24. ADARSHSILA TOWER PRIVATE LIMITED
 25. ADARSHSILA TOWER PRIVATE LIMITED
 26. ADARSHSILA TOWER PRIVATE LIMITED
 27. ADARSHSILA TOWER PRIVATE LIMITED
 28. ADARSHSILA TOWER PRIVATE LIMITED
 29. ADARSHSILA TOWER PRIVATE LIMITED
 30. ADARSHSILA TOWER PRIVATE LIMITED
 31. ADARSHSILA TOWER PRIVATE LIMITED
 32. ADARSHSILA TOWER PRIVATE LIMITED
 33. ADARSHSILA TOWER PRIVATE LIMITED
 34. ADARSHSILA TOWER PRIVATE LIMITED
 35. ADARSHSILA TOWER PRIVATE LIMITED
 36. ADARSHSILA TOWER PRIVATE LIMITED
 37. ADARSHSILA TOWER PRIVATE LIMITED
 38. ADARSHSILA TOWER PRIVATE LIMITED
 39. ADARSHSILA TOWER PRIVATE LIMITED
 40. ADARSHSILA TOWER PRIVATE LIMITED
 41. ADARSHSILA TOWER PRIVATE LIMITED
 42. ADARSHSILA TOWER PRIVATE LIMITED
 43. ADARSHSILA TOWER PRIVATE LIMITED
 44. ADARSHSILA TOWER PRIVATE LIMITED
 45. ADARSHSILA TOWER PRIVATE LIMITED
 46. ADARSHSILA TOWER PRIVATE LIMITED
 47. ADARSHSILA TOWER PRIVATE LIMITED
 48. ADARSHSILA TOWER PRIVATE LIMITED
 49. ADARSHSILA TOWER PRIVATE LIMITED
 50. ADARSHSILA TOWER PRIVATE LIMITED
 51. ADARSHSILA TOWER PRIVATE LIMITED
 52. ADARSHSILA TOWER PRIVATE LIMITED
 53. ADARSHSILA TOWER PRIVATE LIMITED
 54. ADARSHSILA TOWER PRIVATE LIMITED
 55. ADARSHSILA TOWER PRIVATE LIMITED
 56. ADARSHSILA TOWER PRIVATE LIMITED
 57. ADARSHSILA TOWER PRIVATE LIMITED
 58. ADARSHSILA TOWER PRIVATE LIMITED
 59. ADARSHSILA TOWER PRIVATE LIMITED
 60. ADARSHSILA TOWER PRIVATE LIMITED
 61. ADARSHSILA TOWER PRIVATE LIMITED
 62. ADARSHSILA TOWER PRIVATE LIMITED
 63. ADARSHSILA TOWER PRIVATE LIMITED
 64. ADARSHSILA TOWER PRIVATE LIMITED
 65. ADARSHSILA TOWER PRIVATE LIMITED
 66. ADARSHSILA TOWER PRIVATE LIMITED
 67. ADARSHSILA TOWER PRIVATE LIMITED
 68. ADARSHSILA TOWER PRIVATE LIMITED
 69. ADARSHSILA TOWER PRIVATE LIMITED
 70. ADARSHSILA TOWER PRIVATE LIMITED
 71. ADARSHSILA TOWER PRIVATE LIMITED
 72. ADARSHSILA TOWER PRIVATE LIMITED
 73. ADARSHSILA TOWER PRIVATE LIMITED
 74. ADARSHSILA TOWER PRIVATE LIMITED
 75. ADARSHSILA TOWER PRIVATE LIMITED
 76. ADARSHSILA TOWER PRIVATE LIMITED
 77. ADARSHSILA TOWER PRIVATE LIMITED
 78. ADARSHSILA TOWER PRIVATE LIMITED
 79. ADARSHSILA TOWER PRIVATE LIMITED
 80. ADARSHSILA TOWER PRIVATE LIMITED
 81. ADARSHSILA TOWER PRIVATE LIMITED
 82. ADARSHSILA TOWER PRIVATE LIMITED
 83. ADARSHSILA TOWER PRIVATE LIMITED
 84. ADARSHSILA TOWER PRIVATE LIMITED
 85. ADARSHSILA TOWER PRIVATE LIMITED
 86. ADARSHSILA TOWER PRIVATE LIMITED
 87. ADARSHSILA TOWER PRIVATE LIMITED
 88. ADARSHSILA TOWER PRIVATE LIMITED
 89. ADARSHSILA TOWER PRIVATE LIMITED
 90. ADARSHSILA TOWER PRIVATE LIMITED
 91. ADARSHSILA TOWER PRIVATE LIMITED
 92. ADARSHSILA TOWER PRIVATE LIMITED
 93. ADARSHSILA TOWER PRIVATE LIMITED
 94. ADARSHSILA TOWER PRIVATE LIMITED
 95. ADARSHSILA TOWER PRIVATE LIMITED
 96. ADARSHSILA TOWER PRIVATE LIMITED
 97. ADARSHSILA TOWER PRIVATE LIMITED
 98. ADARSHSILA TOWER PRIVATE LIMITED
 99. ADARSHSILA TOWER PRIVATE LIMITED
 100. ADARSHSILA TOWER PRIVATE LIMITED



CERTIFICATE OF STRUCTURAL ENGINEER
I CERTIFY THAT THE STRUCTURAL DRAWING AND DESIGN OF BOTH THE FOUNDATION AND SUPERSTRUCTURE OF THE BUILDING / BUILDINGS HAS BEEN MADE CONSIDERING THE SOIL TEST REPORT AS PER THE RULES AND REGULATIONS MADE UNDER THE ACT AND ALSO CONSIDERING ALL POSSIBLE LOADS, SEISMIC LOAD AND THE MOMENTS GENERATED BY THE PROPOSED STRUCTURE AS PER THE BUREAU OF INDIAN STANDARDS AND NATIONAL BUILDING CODE OF INDIA AND CERTIFIED THAT IT IS SAFE AND STABLE IN ALL RESPECT AND THESE PROVISIONS SHALL BE ADHERED TO DURING THE CONSTRUCTION.

(Signature)
MANDU KANTI MALHOTRA
B. Arch., A.I.A.
M. Arch., A.I.A.
M. Engg., A.I.A.
M. Tech., A.I.A.
M. Sc., A.I.A.
M. Ed., A.I.A.
M. Phil., A.I.A.
M. Litt., A.I.A.
M. Div., A.I.A.
M. Com., A.I.A.
M. Bus., A.I.A.
M. Soc., A.I.A.
M. Pol., A.I.A.
M. Econ., A.I.A.
M. Stat., A.I.A.
M. Math., A.I.A.
M. Phys., A.I.A.
M. Chem., A.I.A.
M. Bio., A.I.A.
M. Env., A.I.A.
M. Geo., A.I.A.
M. Geo-Engg., A.I.A.
M. Geo-Info., A.I.A.
M. Geo-Plan., A.I.A.
M. Geo-Res., A.I.A.
M. Geo-Sci., A.I.A.
M. Geo-Tech., A.I.A.
M. Geo-Trans., A.I.A.
M. Geo-Util., A.I.A.
M. Geo-Vis., A.I.A.
M. Geo-Web., A.I.A.
M. Geo-Wireless., A.I.A.
M. Geo-Other., A.I.A.

CERTIFICATE OF ARCHITECT
I CERTIFY THAT ALL THE ARCHITECTURAL DRAWINGS OF THE PROJECT AT R.S.L.R. DAG NOS. 615(P), 620, 621, 622, 623, 624, 625, 627, 628, 629(P), 630(P), 631(P), 632, 633, 634, 640, 641, 642, 643, 644, 645, 646, 647, 648, 649, 650(P), 651(P), 652, 653, 654, 655, 656, 657, 658(50P) & 659(74) RECORDED UNDER L.R. KHATAN NOS. 2022, 2023, 2024, 2025, 2180, 2181, 2182, 2183, 2184, 2185, 2186, 2187, 2188, 2189, 2200, 2201, 2202, 2203, 2204, 2205, 2206, 2207, 2208, 2209, 2210, 2211, 2212, 2213, 2214, 2440, 2441, 2442, 2443, 2444, 2445, 2446, 2447, 2448, 2449, 2450, 2451, 2452, 2453, 2454, 2455, 2456, 2457, 2458, 2459, 2460, 2461, 2462, 2463, 2464, 2465, 2466, 2467, 2468, 2469, 2470, 2471, 2472, 2473, 2474, 2475, 2476, 2477, 2478, 2479, 2480, 2481, 2482, 2483, 2484, 2485, 2486, 2487, 2488, 2489, 2490, 2491, 2492, 2493, 2494, 2495, 2496, 2497, 2498, 2499, 2500, 2501, 2502, 2503, 2504, 2505, 2506, 2507, 2508, 2509, 2510, 2511, 2512, 2513, 2514, 2515, 2516, 2517, 2518, 2519, 2520, 2521, 2522, 2523, 2524, 2525, 2526, 2527, 2528, 2529, 2530, 2531, 2532, 2533, 2534, 2535, 2536, 2537, 2538, 2539, 2540, 2541, 2542, 2543, 2544, 2545, 2546, 2547, 2548, 2549, 2550, 2551, 2552, 2553, 2554, 2555, 2556, 2557, 2558, 2559, 2560, 2561, 2562, 2563, 2564, 2565, 2566, 2567, 2568, 2569, 2570, 2571, 2572, 2573, 2574, 2575, 2576, 2577, 2578, 2579, 2580, 2581, 2582, 2583, 2584, 2585, 2586, 2587, 2588, 2589, 2590, 2591, 2592, 2593, 2594, 2595, 2596, 2597, 2598, 2599, 2600, 2601, 2602, 2603, 2604, 2605, 2606, 2607, 2608, 2609, 2610, 2611, 2612, 2613, 2614, 2615, 2616, 2617, 2618, 2619, 2620, 2621, 2622, 2623, 2624, 2625, 2626, 2627, 2628, 2629, 2630, 2631, 2632, 2633, 2634, 2635, 2636, 2637, 2638, 2639, 2640, 2641, 2642, 2643, 2644, 2645, 2646, 2647, 2648, 2649, 2650, 2651, 2652, 2653, 2654, 2655, 2656, 2657, 2658, 2659, 2660, 2661, 2662, 2663, 2664, 2665, 2666, 2667, 2668, 2669, 2670, 2671, 2672, 2673, 2674, 2675, 2676, 2677, 2678, 2679, 2680, 2681, 2682, 2683, 2684, 2685, 2686, 2687, 2688, 2689, 2690, 2691, 2692, 2693, 2694, 2695, 2696, 2697, 2698, 2699, 2700, 2701, 2702, 2703, 2704, 2705, 2706, 2707, 2708, 2709, 2710, 2711, 2712, 2713, 2714, 2715, 2716, 2717, 2718, 2719, 2720, 2721, 2722, 2723, 2724, 2725, 2726, 2727, 2728, 2729, 2730, 2731, 2732, 2733, 2734, 2735, 2736, 2737, 2738, 2739, 2740, 2741, 2742, 2743, 2744, 2745, 2746, 2747, 2748, 2749, 2750, 2751, 2752, 2753, 2754, 2755, 2756, 2757, 2758, 2759, 2760, 2761, 2762, 2763, 2764, 2765, 2766, 2767, 2768, 2769, 2770, 2771, 2772, 2773, 2774, 2775, 2776, 2777, 2778, 2779, 2780, 2781, 2782, 2783, 2784, 2785, 2786, 2787, 2788, 2789, 2790, 2791, 2792, 2793, 2794, 2795, 2796, 2797, 2798, 2799, 2800, 2801, 2802, 2803, 2804, 2805, 2806, 2807, 2808, 2809, 2810, 2811, 2812, 2813, 2814, 2815, 2816, 2817, 2818, 2819, 2820, 2821, 2822, 2823, 2824, 2825, 2826, 2827, 2828, 2829, 2830, 2831, 2832, 2833, 2834, 2835, 2836, 2837, 2838, 2839, 2840, 2841, 2842, 2843, 2844, 2845, 2846, 2847, 2848, 2849, 2850, 2851, 2852, 2853, 2854, 2855, 2856, 2857, 2858, 2859, 2860, 2861, 2862, 2863, 2864, 2865, 2866, 2867, 2868, 2869, 2870, 2871, 2872, 2873, 2874, 2875, 2876, 2877, 2878, 2879, 2880, 2881, 2882, 2883, 2884, 2885, 2886, 2887, 2888, 2889, 2890, 2891, 2892, 2893, 2894, 2895, 2896, 2897, 2898, 2899, 2900, 2901, 2902, 2903, 2904, 2905, 2906, 2907, 2908, 2909, 2910, 2911, 2912, 2913, 2914, 2915, 2916, 2917, 2918, 2919, 2920, 2921, 2922, 2923, 2924, 2925, 2926, 2927, 2928, 2929, 2930, 2931, 2932, 2933, 2934, 2935, 2936, 2937, 2938, 2939, 2940, 2941, 2942, 2943, 2944, 2945, 2946, 2947, 2948, 2949, 2950, 2951, 2952, 2953, 2954, 2955, 2956, 2957, 2958, 2959, 2960, 2961, 2962, 2963, 2964, 2965, 2966, 2967, 2968, 2969, 2970, 2971, 2972, 2973, 2974, 2975, 2976, 2977, 2978, 2979, 2980, 2981, 2982, 2983, 2984, 2985, 2986, 2987, 2988, 2989, 2990, 2991, 2992, 2993, 2994, 2995, 2996, 2997, 2998, 2999, 3000.

(Signature)
BARNIKA CHATTOPADHYAY
Regd. Architect
New Town Kolkata Development Authority
Enrollment No. 17ERND/04/10/2023
A.C.H.R.

JAY PRAKASH BHARAT KUMAR AGARWAL
B. Arch., A.I.A.
Reg. No. CA/01/10038
ARCHITECT (L. NO. - 32(A))

(Signature)
Subir Ranjan Sarkar
B. Arch., A.I.A., M.C.P. (I.T., KGP)
Reg. No. 302/ARCH/UR/2019
BATT/09-80

(Signature)
Mainak Majumdar
B. Arch., A.I.A.
Reg. No. 302/ARCH/UR/2019
BATT/09-80

(Signature)
Authorized Signatory

TITLE: GROUND FLOOR PLAN, 1ST. FL. PLAN (BLOCK- 10)

PROJECT: PROPOSED ADDITION OF 6 NOS. (3-XIII), 1 NO. (B-G-VI), 1 NO. (IV) STORIED NEW BLOCKS WITH 6 NOS. (B-G-XI) STORIED EXISTING BLOCKS (UNDER CONSTRUCTION) IN RESIDENTIAL COMPLEX ON RAJAPATH MAIN ROAD (211 BUS ROUTE) AT MOUZA - RAJACHAL, J.L. NO. 12 IN R.S.L.R. DAG NOS. 615(P), 620, 621, 622, 623, 624, 625, 627, 628, 629(P), 630(P), 631(P), 632, 633, 634, 640, 641, 642, 643, 644, 645, 646, 647, 648, 649, 650(P), 651(P), 652, 653, 654, 655, 656, 657, 658(50P) & 659(74) RECORDED UNDER L.R. KHATAN NOS. 2022, 2023, 2024, 2025, 2180, 2181, 2182, 2183, 2184, 2185, 2186, 2187, 2188, 2189, 2200, 2201, 2202, 2203, 2204, 2205, 2206, 2207, 2208, 2209, 2210, 2211, 2212, 2213, 2214, 2440, 2441, 2442, 2443, 2444, 2445, 2446, 2447, 2448, 2449, 2450, 2451, 2452, 2453, 2454, 2455, 2456, 2457, 2458, 2459, 2460, 2461, 2462, 2463, 2464, 2465, 2466, 2467, 2468, 2469, 2470, 2471, 2472, 2473, 2474, 2475, 2476, 2477, 2478, 2479, 2480, 2481, 2482, 2483, 2484, 2485, 2486, 2487, 2488, 2489, 2490, 2491, 2492, 2493, 2494, 2495, 2496, 2497, 2498, 2499, 2500, 2501, 2502, 2503, 2504, 2505, 2506, 2507, 2508, 2509, 2510, 2511, 2512, 2513, 2514, 2515, 2516, 2517, 2518, 2519, 2520, 2521, 2522, 2523, 2524, 2525, 2526, 2527, 2528, 2529, 2530, 2531, 2532, 2533, 2534, 2535, 2536, 2537, 2538, 2539, 2540, 2541, 2542, 2543, 2544, 2545, 2546, 2547, 2548, 2549, 2550, 2551, 2552, 2553, 2554, 2555, 2556, 2557, 2558, 2559, 2560, 2561, 2562, 2563, 2564, 2565, 2566, 2567, 2568, 2569, 2570, 2571, 2572, 2573, 2574, 2575, 2576, 2577, 2578, 2579, 2580, 2581, 2582, 2583, 2584, 2585, 2586, 2587, 2588, 2589, 2590, 2591, 2592, 2593, 2594, 2595, 2596, 2597, 2598, 2599, 2600, 2601, 2602, 2603, 2604, 2605, 2606, 2607, 2608, 2609, 2610, 2611, 2612, 2613, 2614, 2615, 2616, 2617, 2618, 2619, 2620, 2621, 2622, 2623, 2624, 2625, 2626, 2627, 2628, 2629, 2630, 2631, 2632, 2633, 2634, 2635, 2636, 2637, 2638, 2639, 2640, 2641, 2642, 2643, 2644, 2645, 2646, 2647, 2648, 2649, 2650, 2651, 2652, 2653, 2654, 2655, 2656, 2657, 2658, 2659, 2660, 2661, 2662, 2663, 2664, 2665, 2666, 2667, 2668, 2669, 2670, 2671, 2672, 2673, 2674, 2675, 2676, 2677, 2678, 2679, 2680, 2681, 2682, 2683, 2684, 2685, 2686, 2687, 2688, 2689, 2690, 2691, 2692, 2693, 2694, 2695, 2696, 2697, 2698, 2699, 2700, 2701, 2702, 2703, 2704, 2705, 2706, 2707, 2708, 2709, 2710, 2711, 2712, 2713, 2714, 2715, 2716, 2717, 2718, 2719, 2720, 2721, 2722, 2723, 2724, 2725, 2726, 2727, 2728, 2729, 2730, 2731, 2732, 2733, 2734, 2735, 2736, 2737, 2738, 2739, 2740, 2741, 2742, 2743, 2744, 2745, 2746, 2747, 2748, 2749, 2750, 2751, 2752, 2753, 2754, 2755, 2756, 2757, 2758, 2759, 2760, 2761, 2762, 2763, 2764, 2765, 2766, 2767, 2768, 2769, 2770, 2771, 2772, 2773, 2774, 2775, 2776, 2777, 2778, 2779, 2780, 2781, 2782, 2783, 2784, 2785, 2786, 2787, 2788, 2789, 2790, 2791, 2792, 2793, 2794, 2795, 2796, 2797, 2798, 2799, 2800, 2801, 2802, 2803, 2804, 2805, 2806, 2807, 2808, 2809, 2810, 2811, 2812, 2813, 2814, 2815, 2816, 2817, 2818, 2819, 2820, 2821, 2822, 2823, 2824, 2825, 2826, 2827, 2828, 2829, 2830, 2831, 2832, 2833, 2834, 2835, 2836, 2837, 2838, 2839, 2840, 2841, 2842, 2843, 2844, 2845, 2846, 2847, 2848, 2849, 2850, 2851, 2852, 2853, 2854, 2855, 2856, 2857, 2858, 2859, 2860, 2861, 2862, 2863, 2864, 2865, 2866, 2867, 2868, 2869, 2870, 2871, 2872, 2873, 2874, 2875, 2876, 2877, 2878, 2879, 2880, 2881, 2882, 2883, 2884, 2885, 2886, 2887, 2888, 2889, 2890, 2891, 2892, 2893, 2894, 2895, 2896, 2897, 2898, 2899, 2900, 2901, 2902, 2903, 2904, 2905, 2906, 2907, 2908, 2909, 2910, 2911, 2912, 2913, 2914, 2915, 2916, 2917, 2918, 2919, 2920, 2921, 2922, 2923, 2924, 2925, 2926, 2927, 2928, 2929, 2930, 2931, 2932, 2933, 2934, 2935, 2936, 2937, 2938, 2939, 2940, 2941, 2942, 2943, 2944, 2945, 2946, 2947, 2948, 2949, 2950, 2951, 2952, 2953, 2954, 2955, 2956, 2957, 2958, 2959, 2960, 2961, 2962, 2963, 2964, 2965, 2966, 2967, 2968, 2969, 2970, 2971, 2972, 2973, 2974, 2975, 2976, 2977, 2978, 2979, 2980, 2981, 2982, 2983, 2984, 2985, 2986, 2987, 2988, 2989, 2990, 2991, 2992, 2993, 2994, 2995, 2996, 2997, 2998, 2999, 3000.

ARCHITECTS: AGRAWAL & AGRAWAL

SCALE: 1/80 DATE: 07.28.15 SHEET NO: 40 OF 44

40/44
86-10

| | | | |
|------------------------------|----------------------|----------------|------------------|
| ARCHITECT: | BARNIKA CHATTERJEE | Enrollment No: | STR/NKDA/10/0001 |
| CIVIL/STRUCTURAL ENGINEER: | MANDI KANTI MAJUMDER | Enrollment No: | STR/NKDA/10/0002 |
| Mechanical ENGINEER: | SHYAMAL KUMAR MITRA | Enrollment No: | STR/NKDA/10/0003 |
| TOWN PLANNER/URBAN DESIGNER: | BARNIKA CHATTERJEE | Enrollment No: | STR/NKDA/10/0004 |
| STRUCTURAL REVIEWER: | MANDI KANTI MAJUMDER | Enrollment No: | STR/NKDA/10/0005 |

STRUCTURAL DRAWINGS, STRUCTURAL DESIGN CALCULATIONS & SOIL TEST REPORT ARE NOT CHECKED AND KEPT FOR RECORDS ONLY.

NEW TOWN KOLKATA DEVELOPMENT AUTHORITY
No Objection Certificate for
Construction Plan for Construction Purpose
Memo No. 6376 (3)/NKDA/BFS-04(09)/2014

Date: 03 Nov 2015
Building Particulars: B+G+13 storied Residential Building at Dag No. 620 to 625, 627, 628, 615(P), 629(P), 630(P), 632(P), 632 to 649, 650(P), 651(P), 652 to 657, 659/658(P) & 631/734.
Mouza - Raigachi, T.L. No. 12, 21 P.S (N)

Note: The proposal is recommended for approval subject to submission of Environment Clearance.

Sanjiv Saha
2-12-15
Executive Officer
Rajarhat Panchayat Samity

Sajanti Majumder
Assistant Architect
New Town Kolkata Development Authority

S. Chatterjee
SUKRIT CHATTERJEE
Chief Architect
New Town Kolkata Development Authority