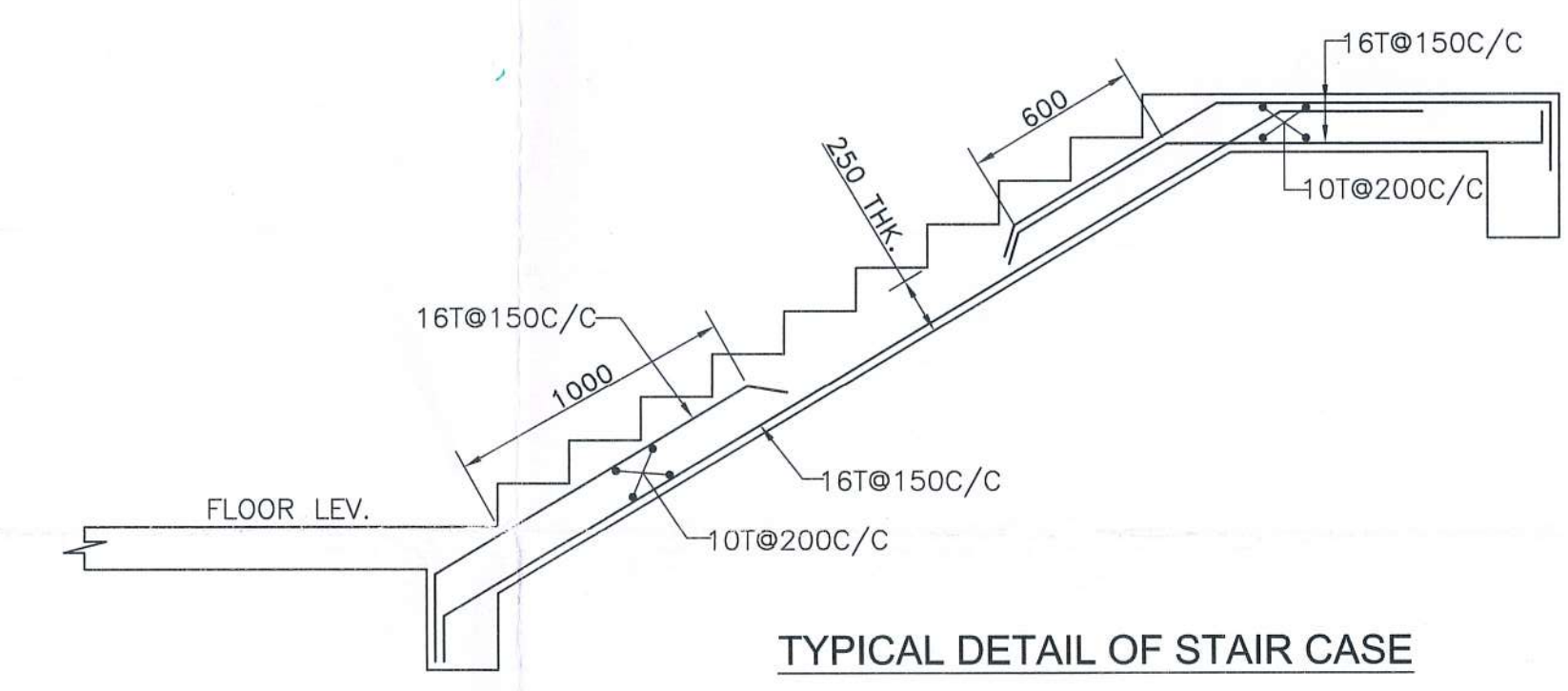


THIRD FLOOR GA.(ALL SLAB THICKNESS 150mm UNLESS OTHERWISE MENTIONED)

BEAM SCHEDULE FOR FIRST & TYPICAL FLOOR							
BEAM MKD.	BEAM SIZE	SUPPORT REINFORCEMENT			SPAN REINFORCEMENT		
		TOP	BOTTOM	STIRRUPS	TOP	BOTTOM	STIRRUPS
BX-1,2,4,14,17,19	500x750	4-32T+ 4-25T	4-32T	10T@100C/C(4L)	4-32T	4-32T+ 4-25T	10T@150C/C(4L)
BX-3,3A,18	250x600	3-25T+ 3-20T	3-25T	8T@100C/C	3-25T	3-25T+ 3-20T	8T@150C/C
BX-5,10,10A,12,13,21	250x600	3-25T+ 3-20T	3-25T	8T@100C/C	3-25T	3-25T+ 3-16T	8T@150C/C
BX-6,7,8,9,11,15,16	500x750	4-32T+ 4-25T	4-25T	10T@100C/C(4L)	4-32T	4-25T+ 4-20T	10T@150C/C(4L)
BX-8A	250x600	3-25T+ 3-20T	3-25T	8T@115C/C	3-25T	3-25T+ 3-20T	8T@150C/C
BX-8B	500x750	4-25T+ 4-20T	4-25T	10T@100C/C(4L)	4-25T	4-25T+ 4-20T	10T@150C/C(4L)
BX-8A	250x600	3-25T+ 3-20T	3-25T	8T@100C/C	3-25T	3-25T+ 3-20T	8T@150C/C
BX-20	250x450	2-20T	3-20T	8T@100C/C	2-20T	3-20T	8T@150C/C
BX-22	250x400	2-16T	3-16T	8T@100C/C	2-16T	3-16T	8T@150C/C

BEAM SCHEDULE FOR FIRST & TYPICAL FLOOR							
BEAM MKD.	BEAM SIZE	SUPPORT REINFORCEMENT			SPAN REINFORCEMENT		
		TOP	BOTTOM	STIRRUPS	TOP	BOTTOM	STIRRUPS
BY-1	250x750	3-25T+ 3-20T	3-25T	8T@100C/C	3-25T	3-25T+ 3-20T	8T@150C/C
BY-2,8	500x750	4-32T+ 4-25T	4-32T	10T@100C/C(4L)	4-32T	4-32T+ 4-25T	10T@150C/C(4L)
BY-3	250x750	3-25T+ 3-20T	3-25T	8T@100C/C	3-25T	3-25T+ 3-20T	8T@150C/C
BY-4,6	500x750	4-32T+ 4-25T	4-32T	10T@100C/C(4L)	4-32T	4-32T+ 4-20T	10T@150C/C(4L)
BY-5	250x800	3-25T+ 3-20T	3-25T	8T@100C/C	3-25T	3-25T+ 3-20T	8T@150C/C
BY-7	250x450	2-20T	3-20T	8T@100C/C	2-20T	3-20T	8T@150C/C
BY-7A	250x500	2-20T	3-20T	8T@100C/C	2-20T	3-20T+ 3-16T	8T@150C/C
BY-9	250x800	3-20T+ 3-20T	3-20T	8T@100C/C	3-20T	3-20T+ 3-20T	8T@150C/C
BY-8A	500x800	4-32T+ 4-25T	4-32T	10T@100C/C(4L)	4-32T	4-32T+ 4-25T	10T@150C/C(4L)
BY-10	250x400	2-16T	3-16T	8T@100C/C	2-16T	3-16T	8T@150C/C
BY-11	500x750	4-25T+ 4-25T	4-25T	10T@100C/C(4L)	4-25T	4-25T+ 4-25T	10T@150C/C(4L)
BY-12	500x750	4-25T+ 4-20T	4-25T	10T@100C/C(4L)	4-25T	4-25T+ 4-20T	10T@150C/C(4L)
BY-13	500x750/900	5-32T+ 5-32T	4-32T	10T@100C/C(4L)	5-32T+ 5-32T	4-32T+ 4-25T	10T@150C/C(4L)

FLOOR SLAB SCHEDULE:-					
SLAB THK.	SHORTER SPAN			LONGER SPAN	
	SUPPORT	TOP	MID SPAN	BOTTOM	SUPPORT
150	10T @ 150 CC	10T @ 200 CC	10T @ 150 CC	10T @ 200 CC	10T @ 200 CC
165	12T @ 150 CC	12T @ 200 CC	12T @ 150 CC	12T @ 200 CC	12T @ 200 CC
250	16T @ 100 CC	16T @ 200 CC	16T @ 100 CC	16T @ 200 CC	16T @ 200 CC



PROJECT
PROPOSED B+G+IV COMMERCIAL BUILDING WITH MUNICIPAL HOLDING NO. 30, KANAILAL GOSWAMI SARANI, UNDER CIRCLE NO. 'F', OF THE SERAMPORE MUNICIPALITY COMPRISED IN L.R. DAG NOS. 2575, 2577, 2584, 2586, 2587, 2590, 2591, 2592, 2593, 2594, 2595, 2596, 2597, 2598, 2599, 2600, 2601, 2602, MOUZA-MAHESH, P.S. SERAMPORE, J.L.: 15, L.R. KHATIAN NO. 11337, P.O. SERAMPORE, PIN: 712201, DISTRICT HOOGHLY, WEST BENGAL.

TITLE
3RD FLOOR G.A., BEAM & SLAB SCHEDULE (COMMERCIAL BUILDING)

- ALL DIMENSIONS ARE IN MM EXCEPT NOTED.
- GRADE OF CONCRETE M40/M30
- GRADE OF STEEL F450

EDEN INFRABUILD PVT. LTD.
(Signature)
 Director

CONSTITUTED ATTORNEY OF PYRAMID ENCLAVE (P) LTD.

SIGNATURE OF OWNER
 WE DO HEREBY CERTIFY THAT THE FOUNDATION AND SUPERSTRUCTURE OF THE BUILDING PROPOSED FOR CONSTRUCTION AT MUNICIPAL HOLDING NO. 30, KANAILAL GOSWAMI SARANI, UNDER CIRCLE NO. 'F', OF THE SERAMPORE MUNICIPALITY COMPRISED IN L.R. DAG NOS. 2575, 2577, 2584, 2586, 2587, 2590, 2591, 2592, 2593, 2594, 2595, 2596, 2597, 2598, 2599, 2600, 2601, 2602, MOUZA-MAHESH, P.S. SERAMPORE, J.L.: 15, L.R. KHATIAN NO. 11337, P.O. SERAMPORE, PIN: 712201, DISTRICT HOOGHLY, WEST BENGAL, HAVE BEEN SO DESIGNED BY ME/US WILL HAVE SUCH FOUNDATION AND SUPERSTRUCTURE SAFE IN ALL RESPECT INCLUDING THE CONSIDERATION OF BEARING CAPACITY AND SETTLEMENT OF SOIL ETC.

(Signature)
MALAY KUMAR GHOSH
 Regn. No. CAP/92/14894
 95A, Dr. Sarat Banerjee Road
 Kolkata - 700 029

SIGNATURE OF ARCHITECT
MALAY KUMAR GHOSH
 REGN. NO. CA/92/14854
 95A, DR. SARAT BANERJEE ROAD, KOLKATA-700 029
 KMC ENLISTMENT NO.180(A)

(Signature)
BIBEK BIKASH MULLIK
E.S.E. - I/75
KOLKATA MUNICIPAL CORPORATION
 SIGNATURE OF STRUCTURAL ENGINEER
BIBEK BIKASH MULLIK

(Signature)
Geotechnical Engineer
Geotechnical Engineers Pvt. Ltd.
GEOTECH ENGINEERS PVT.LTD.
ALOK ROY
 CTE-1/11
 6A, MILON PARK, GARIA, KOLKATA-700084.

DESIGNED-BBM REF.
 CHECKED-BBM SCALE : 1:125,1:25
 DEALT - S.P DATE : 03.08.2018
 DRG. NO-FMC/MUN/ST/SERAMPORE/04

STRUCTURAL CONSULTANT
P M CONSULTANT
 35-A, DR. SARAT BANERJEE ROAD, KOL.-29
 PHONE- 9830461784,
 e-mail- bibekbm@rediffmail.com

ESPACE
 35-A, DR. SARAT BANERJEE ROAD, KOLKATA-700029
 Tele/Fax : 91-33-2465-4130 / 4159
 e-mail : espace@vsnl.net
 WEBSITE : www.espaceindia.com

Petition No. 753 of 2018-19
Permission for the new construction as proposed and shown in the plan is granted vide SI No. B.C.C. and M.C.C. No. 1000/2018
M.O.C. Meeting Dt. 22.12.2018
Dated: 27/12/18 Chairman

Serampore Municipality
1. This plan is valid for three years and may be revalided for the further two years on payment of necessary charges with production of original plan showing with prescribed form.
2. Within one month after the completion of new construction or a substantial portion thereof, the owner must be informed this to the Municipal Authority for interim assessment on a prescribed form.

The Plan has been drawn as per WBH Rule 2007 and may be approved

Chandray Chakrabarty
Urban Infrastructure Expert
Serampore Municipality

Niranjana Banerjee
Technical Advisor
Retd. Chief MED
Serampore Municipality

CONSULTED ATTORNEY
OF
SERAMPORE MUNICIPALITY