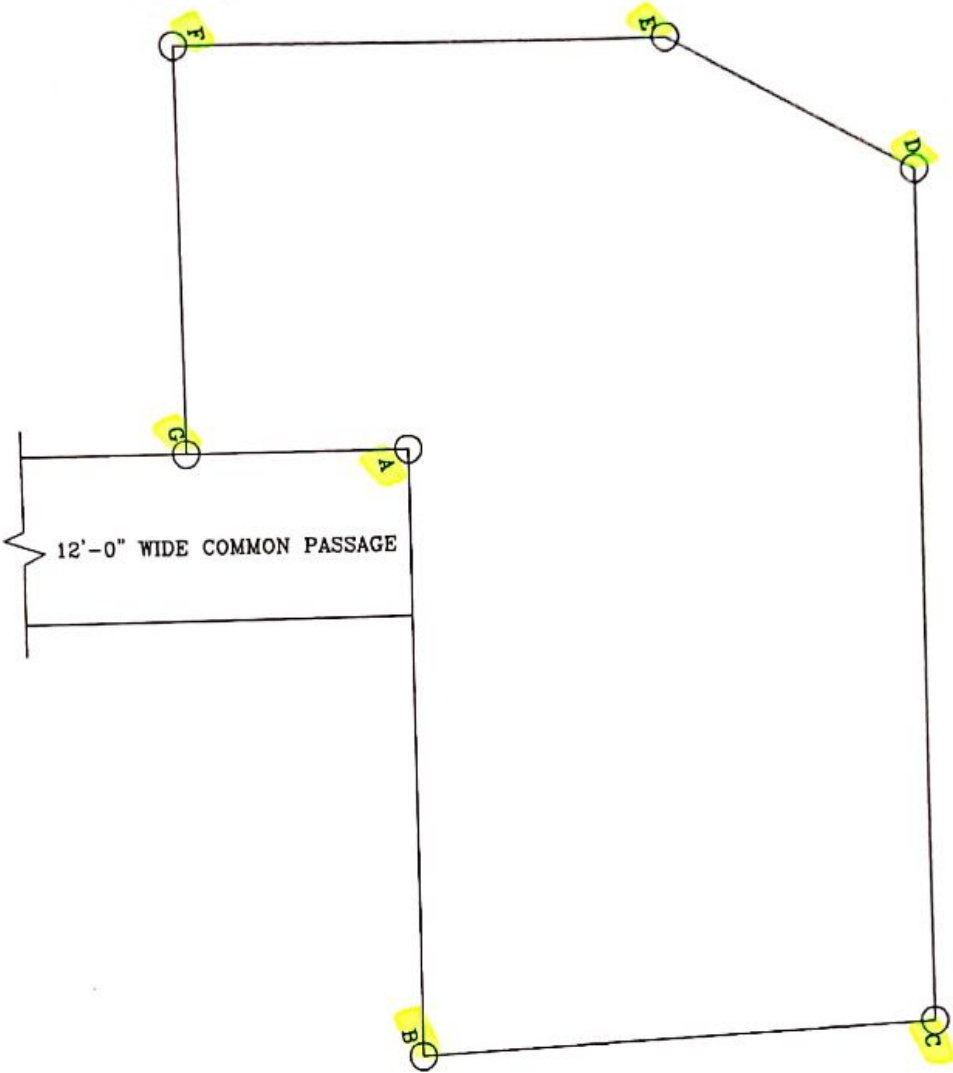
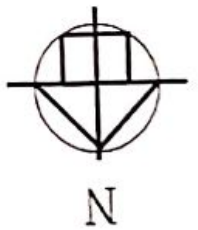


LATITUDE & LONGITUDE OF NIRALAYA



- A = 22°34'4.5243" N
- A = 88°16'53.0173" E
- B = 22°34'5.5452" N
- B = 88°16'52.7448" E
- C = 22°34'5.6136" N
- C = 88°16'53.2488" E
- D = 22°34'5.3400" N
- D = 88°16'52.5288" E
- E = 22°34'6.1608" N
- E = 88°16'52.0378" E
- F = 22°34'3.8208" N
- F = 88°16'52.9716" E
- G = 22°34'4.1016" N
- G = 88°16'53.2812" E