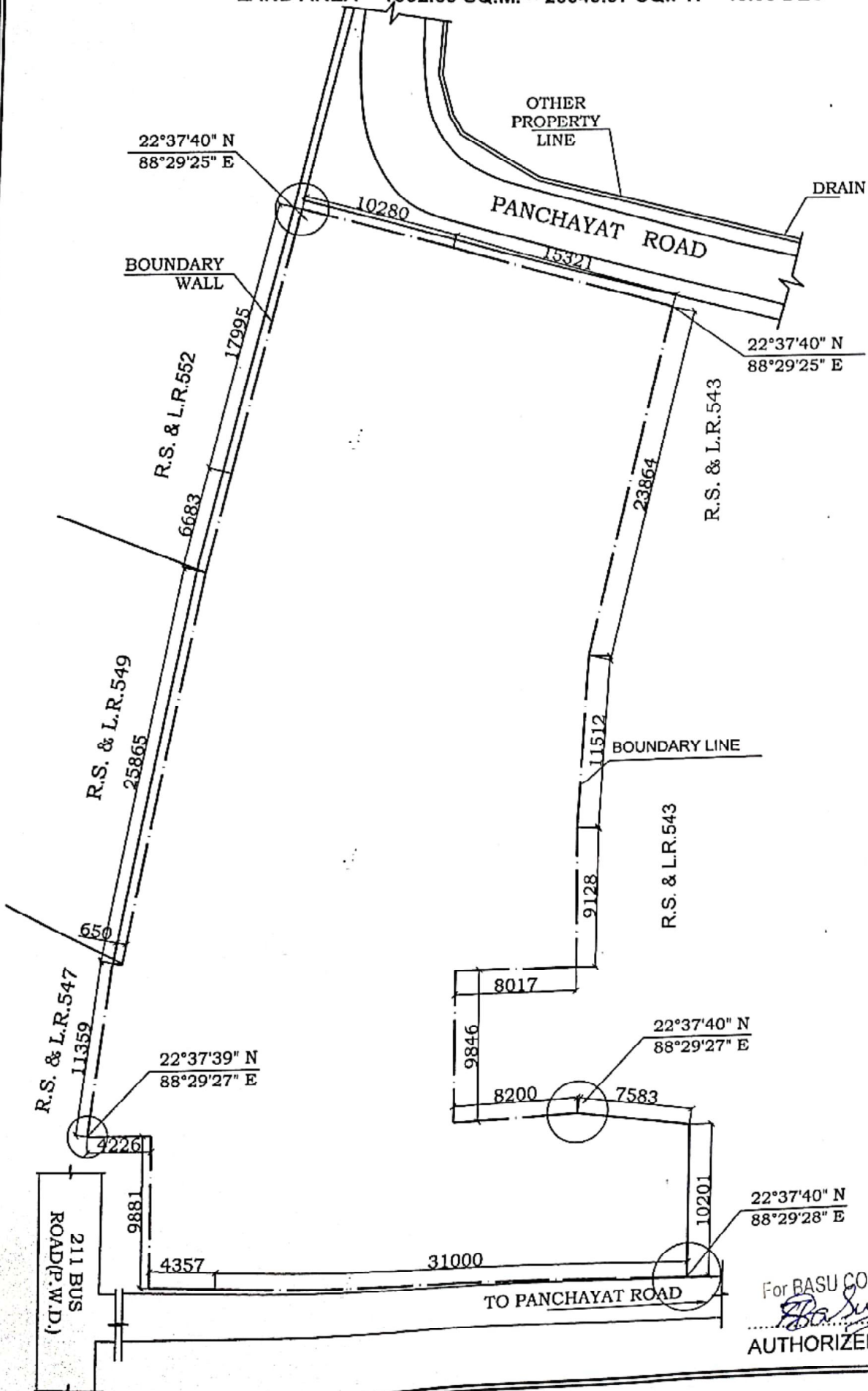


SITE PLAN AT G+4 STORIED RESIDENTIAL COMPLEX AT MOUZA-BHATENDA, J.L.NO.-28,L.R KHATIAN NO.- 483, 597, 692,720,1112,1501,1502, 1503, 2979,2981, 2984,2986,2987,4715,4145, R.S & L.R DAG NO.- 542, 545,546,542/806 (P) , P.S.- RAJARHAT, DIST.- 24 PARGANAS (N) , UNDER RAJARHAT BISHNUPUR 1 NO. GRAM PANCHAYAT.

LAND AREA = 1862.69 SQ.M. = 20049.97 SQ.FT. = 46.03 DEC



For BASU CONSTRUCTION PVT. LT
Basu
 AUTHORIZED SIGNATORY
 Director