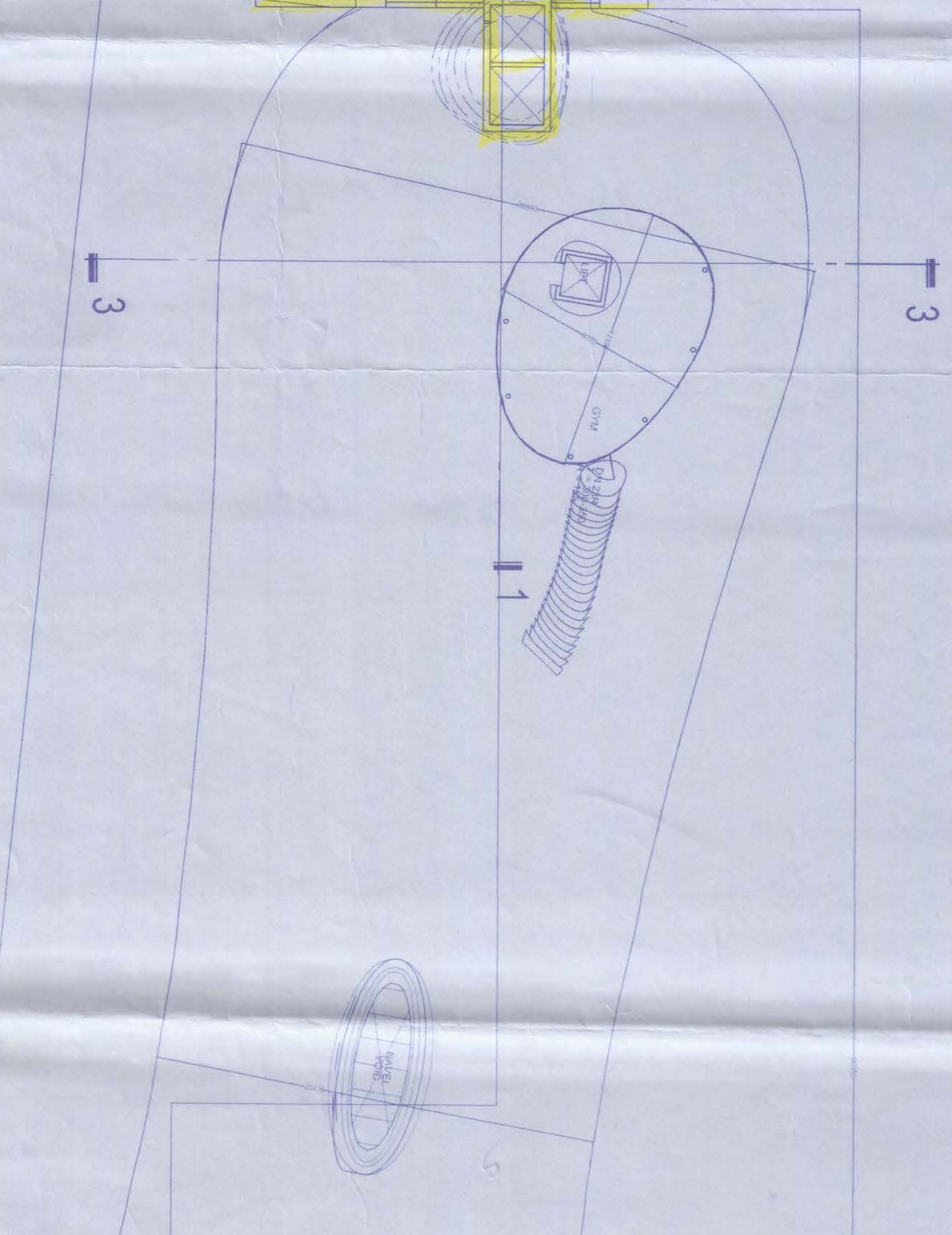
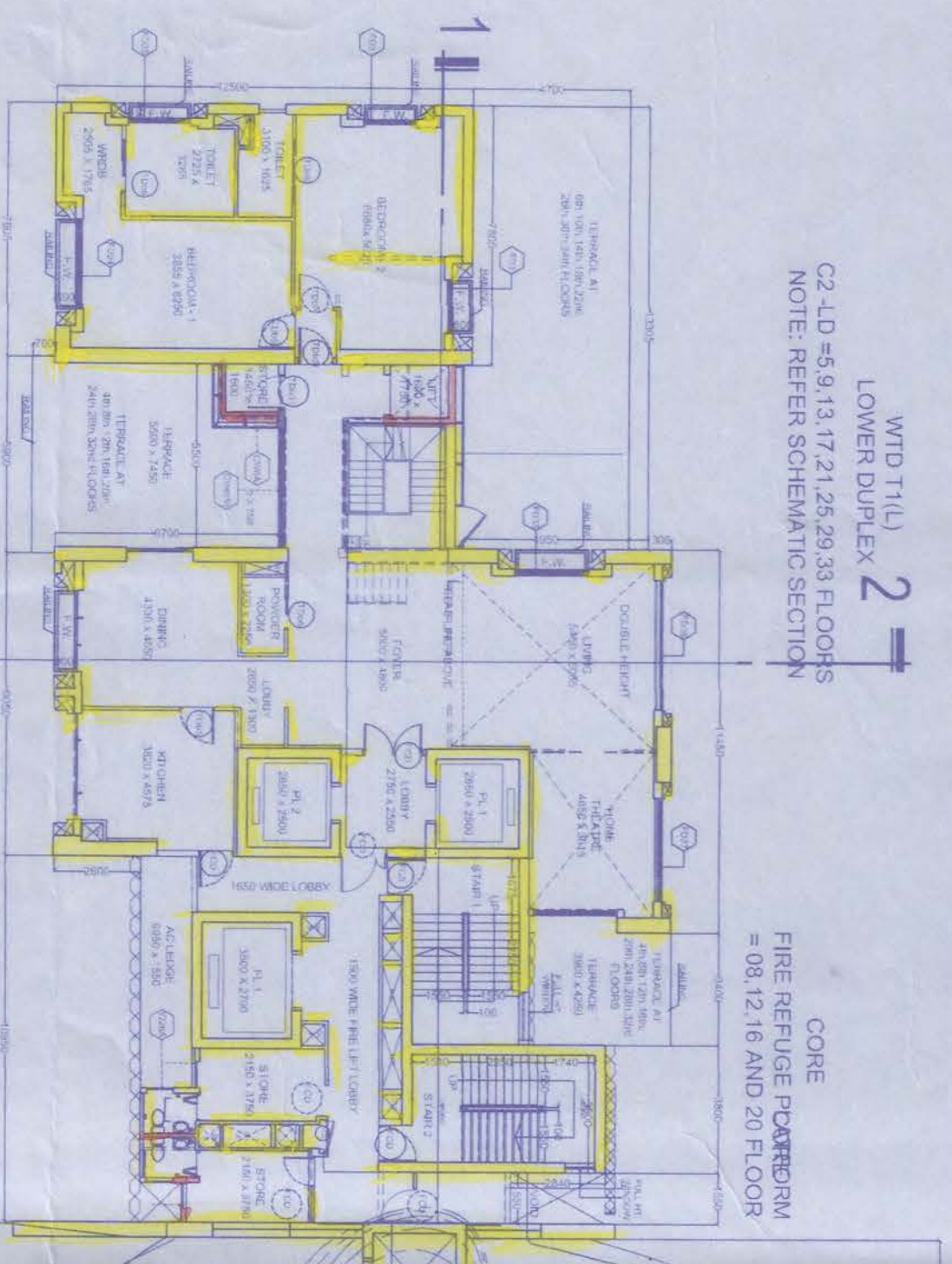
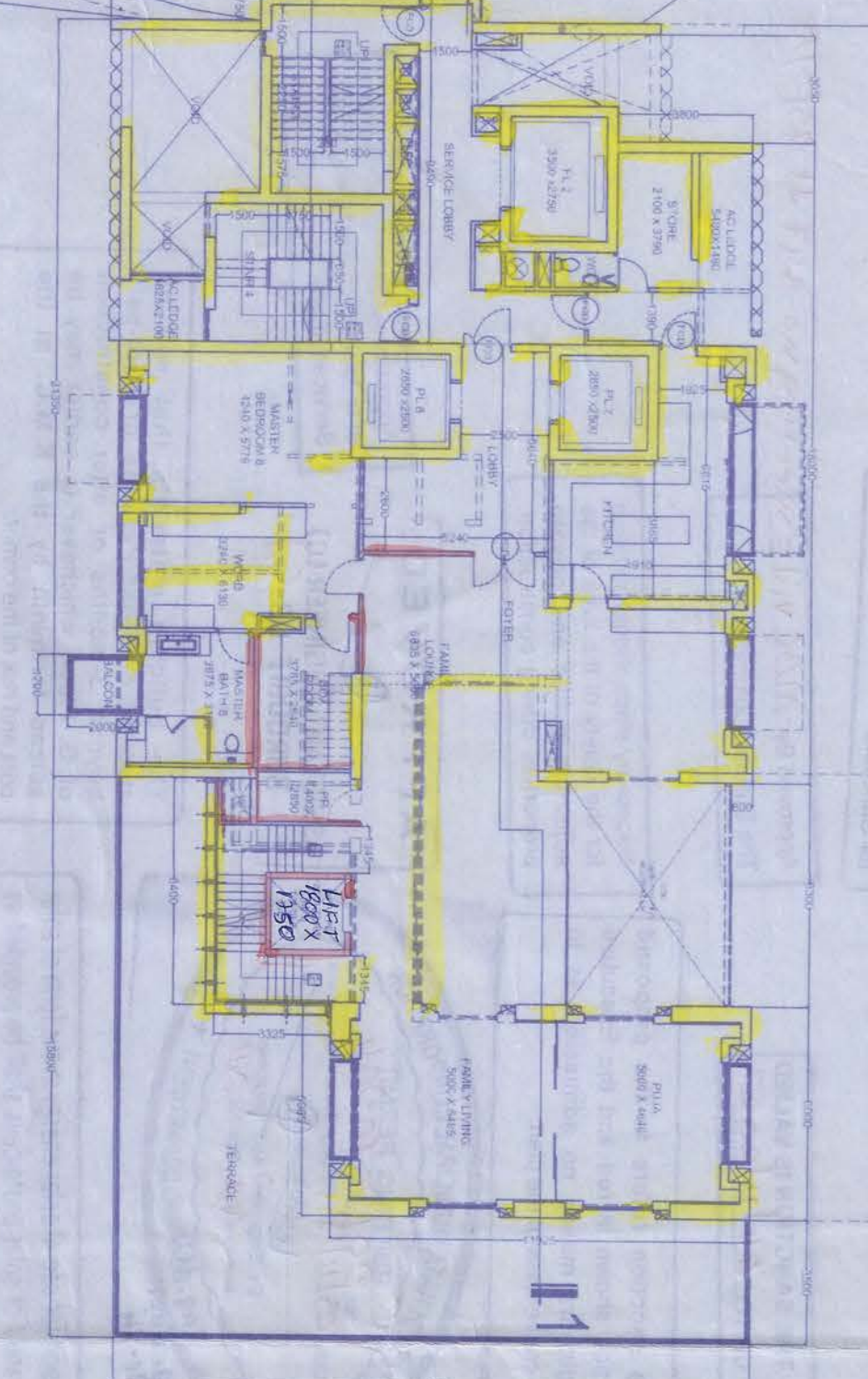


WING-T(II) LOWER DUPLEX 17.21, 23, 25, 31 FLOORS
NON-FIRE RESISTANT SECTION



WING A - 34TH FLOOR PLAN
SCALE: 1:200



WING B - 34TH FLOOR PLAN LEVEL (+) 117.16 M
SCALE: 1:200



LEGENDS:-
1. ALUMINIUM
2. ALUMINIUM FRAME GLASS
3. GLASS
4. GLASS DOOR
5. GLASS PARTITION
6. GLASS PARTITION FRAME
7. GLASS PARTITION FRAME
8. GLASS PARTITION FRAME
9. GLASS PARTITION FRAME
10. GLASS PARTITION FRAME
11. GLASS PARTITION FRAME
12. GLASS PARTITION FRAME
13. GLASS PARTITION FRAME
14. GLASS PARTITION FRAME
15. GLASS PARTITION FRAME
16. GLASS PARTITION FRAME
17. GLASS PARTITION FRAME
18. GLASS PARTITION FRAME
19. GLASS PARTITION FRAME
20. GLASS PARTITION FRAME
21. GLASS PARTITION FRAME
22. GLASS PARTITION FRAME
23. GLASS PARTITION FRAME
24. GLASS PARTITION FRAME
25. GLASS PARTITION FRAME
26. GLASS PARTITION FRAME
27. GLASS PARTITION FRAME
28. GLASS PARTITION FRAME
29. GLASS PARTITION FRAME
30. GLASS PARTITION FRAME
31. GLASS PARTITION FRAME
32. GLASS PARTITION FRAME
33. GLASS PARTITION FRAME
34. GLASS PARTITION FRAME
35. GLASS PARTITION FRAME
36. GLASS PARTITION FRAME
37. GLASS PARTITION FRAME
38. GLASS PARTITION FRAME
39. GLASS PARTITION FRAME
40. GLASS PARTITION FRAME
41. GLASS PARTITION FRAME
42. GLASS PARTITION FRAME
43. GLASS PARTITION FRAME
44. GLASS PARTITION FRAME
45. GLASS PARTITION FRAME
46. GLASS PARTITION FRAME
47. GLASS PARTITION FRAME
48. GLASS PARTITION FRAME
49. GLASS PARTITION FRAME
50. GLASS PARTITION FRAME

CERTIFICATE OF STRUCTURAL ENGINEER
THIS IS TO CERTIFY THAT THE STRUCTURAL DESIGN AND DRAWING OF BOTH FOUNDATION AND SUPER STRUCTURE OF THE BUILDING POSSIBLE LOADS INCLUDING THE SEISMIC LOAD AS PER THE NATIONAL BUILDING CODE OF INDIA AND CERTIFIED THAT IT IS SAFE AND STABLE IN ALL RESPECTS.
Wpud Lankar
LIFE TIME CERTIFICATION
L27E 001378514
L27E 001378514

KEY PLAN
SCALE: 1:2000

NOTES

SIGNATURE OF ARCHITECT
M. K. BOY
M. K. BOY
ARCHITECT
15/3, PAVANAN NAGAR, SPANBANDURA, KOLKATA 700015, W.B. INDIA
TEL: 98305 29107
E-MAIL: m.kboy@arcstudio.com

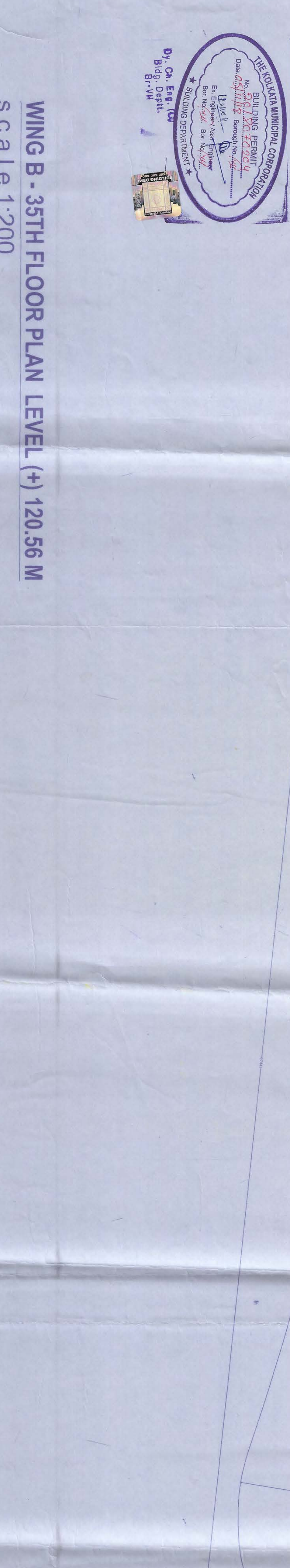
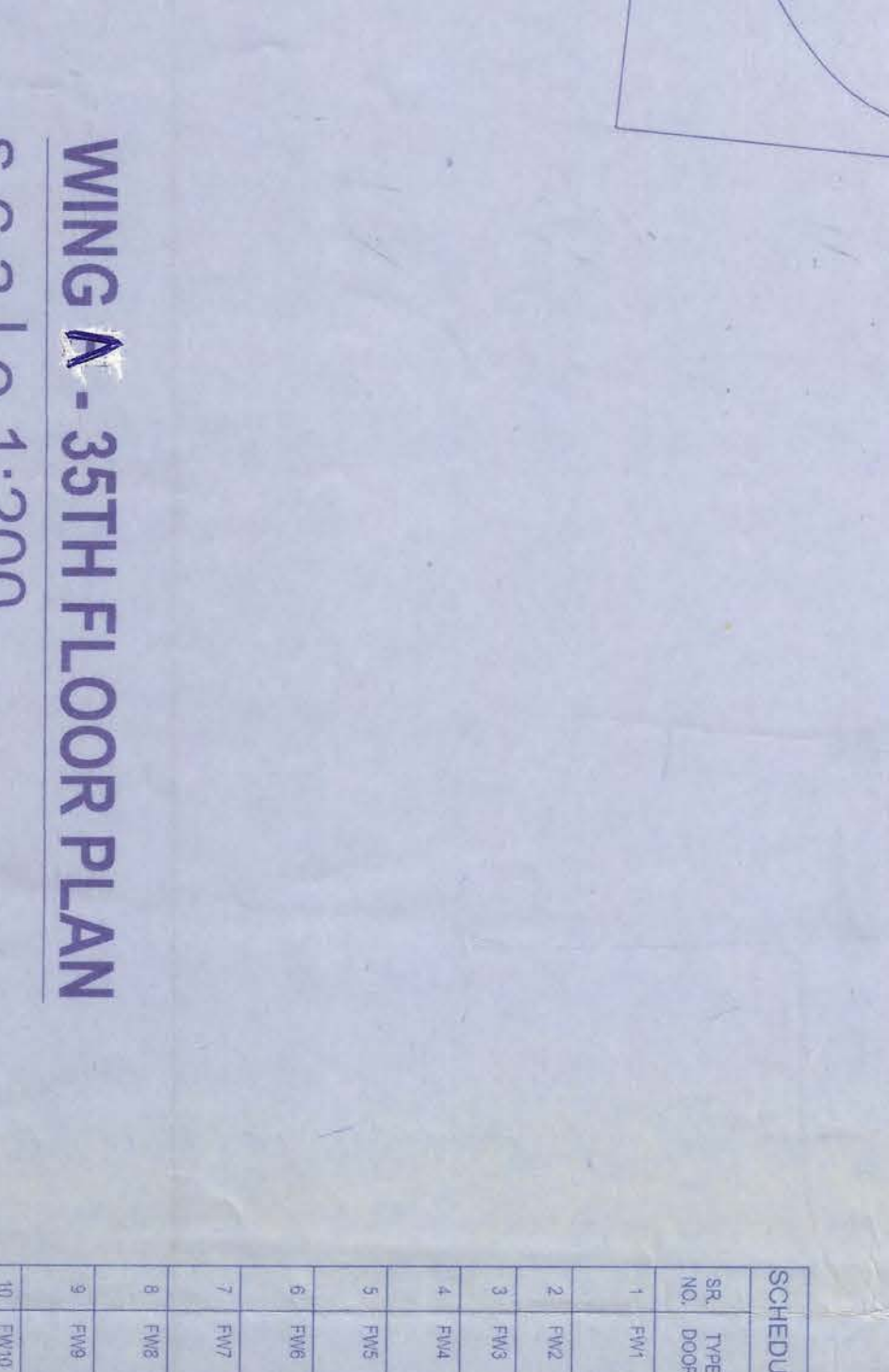
CLIENT
FORUM PROJECTS PVT. LTD.
4/1 RED CROSS PLACE,
KOLKATA 700 001.

PROPOSED ADOPTION OF TWO E-GORGS US 304 OF KMC ACT, 1980 READ WITH U/R 69A OF KMC BUILDING RULES 2009 OVER AN EXISTING SANCTIONED (B-GXXXX) STORED MUNICIPAL CORPORATION BUILDING INCLUDING RULES 2009 AT PREMISES NO. 1001/A, WING NO. 66, BPSUDUCH, K.M.C., (KOLKATA 700 049) (28.62/840) VIA MHC MEETING NO.489 DATED 13/01/2015.

SCHEDULE OF OPENINGS (DOORS) - ALUMINIUM
NO. TYPE HGT (M) LTH (M) AREA (SQ. M) DESCRIPTION

SCHEDULE OF OPENINGS (DOORS) - ALUMINIUM

WING A - 34TH FLOOR PLAN
SCALE: 1:200



RESUBMISSION TO K.M.C.
MUNICIPAL CORPORATION
DIRECTION: 19 OF 26
DATE: 27-JULY-18
PROJECT CODE: P9228
FLOOR PLAN: WING-A AND WING-B
DRAWING NO: 34TH-35TH

ARC STUDIO
30 PAVANAN NAGAR, SPANBANDURA, KOLKATA 700015, W.B. INDIA
TEL: 98305 29107
E-MAIL: m.kboy@arcstudio.com