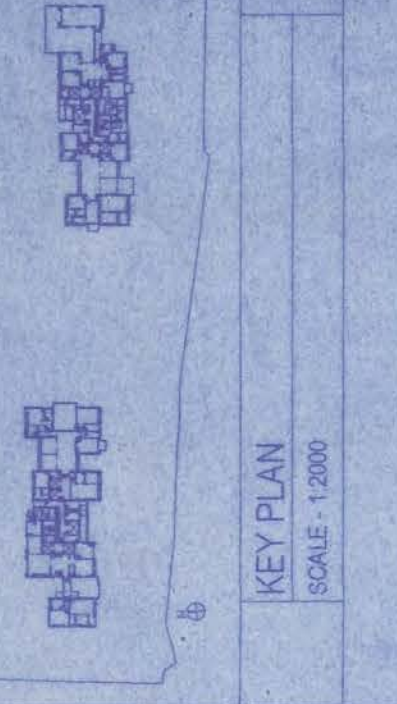


LEGENDS-

- 1. ALL DIMENSIONS ARE IN METERS UNLESS SPECIFIED OTHERWISE.
- 2. FINISHES TO BE AS PER SPECIFICATION.
- 3. ALL WORK TO BE DONE IN ACCORDANCE WITH THE NATIONAL BUILDING CODE OF INDIA.
- 4. ALL WORK TO BE DONE IN ACCORDANCE WITH THE NATIONAL ELECTRICAL CODE OF INDIA.
- 5. ALL WORK TO BE DONE IN ACCORDANCE WITH THE NATIONAL PIPING CODE OF INDIA.
- 6. ALL WORK TO BE DONE IN ACCORDANCE WITH THE NATIONAL MECHANICAL CODE OF INDIA.
- 7. ALL WORK TO BE DONE IN ACCORDANCE WITH THE NATIONAL PLUMBING CODE OF INDIA.
- 8. ALL WORK TO BE DONE IN ACCORDANCE WITH THE NATIONAL SANITARY CODE OF INDIA.
- 9. ALL WORK TO BE DONE IN ACCORDANCE WITH THE NATIONAL FIRE CODE OF INDIA.
- 10. ALL WORK TO BE DONE IN ACCORDANCE WITH THE NATIONAL SAFETY CODE OF INDIA.

NOTE: ALL MAIN STRUCTURAL HAVE TO BE DONE IN ACCORDANCE WITH THE NATIONAL BUILDING CODE OF INDIA.



CERTIFICATE OF STRUCTURAL ENGINEER

THIS IS TO CERTIFY THAT THE STRUCTURAL DESIGN AND DRAWING OF BOTH FOUNDATION AND SUPERSTRUCTURE OF THE BUILDING HAS BEEN MADE BY ME CONSIDERING ALL POSSIBLE LOADS INCLUDING THE SEISMIC LOADS AS PER THE NATIONAL BUILDING CODE OF INDIA AND THAT IT IS SAFE AND STABLE IN ALL RESPECTS.

Utpal C. Saha
 Utpal C. Saha
 200 CHANDRANAGAR
 KOLKATA - 700017
 SIGNATURE OF STRUCTURAL ENGINEER

CERTIFICATE OF ARCHITECT

I DO HEREBY CERTIFY WITH FULL RESPONSIBILITY THAT THE BUILDING PLAN HAS BEEN DRAWN UP AS PER K.M.C. BUILDING RULE - 2009 AS AMENDED FROM TIME TO TIME.

THAT THE WIDTH OF THE ABUTTING ROAD CONFORM WITH THE PLAN AND IT IS A TANKABLE SITE NOT A TANKER APPLIED UP WITH THE SITE. THE LOCATION PLAN AGREES WITH THE SITE. THE PLOT IS DEMARCATED BY THE K.M.C. OFFICE AND IS OCCUPIED BY THE STRUCTURE AS SHOWN FULLY OCCUPIED BY OWNERS AS PER OWNERS UNDERTAKING.

M. S. Roy
 M. S. Roy
 100, CHANDRANAGAR
 KOLKATA - 700017
 SIGNATURE OF ARCHITECT

PROPOSED ADDITION OF TWO FLOORS (US 156 OF K.M.C. ACT, 1980 READ WITH U.R. 88A OF K.M.C. BUILDING RULES 2009 OVER AN EXISTING SANCTIONED B-6422001) STORED ALTERATIONS U/R 28 (2) & 209 OF KOLKATA MUNICIPAL CORPORATION BUILDING RULES 2009 AT PREMISES NO. 100/1A, 100/2, 100/3, 100/4, 100/5, 100/6, 100/7, 100/8, 100/9, 100/10, 100/11, 100/12, 100/13, 100/14, 100/15, 100/16, 100/17, 100/18, 100/19, 100/20, 100/21, 100/22, 100/23, 100/24, 100/25, 100/26, 100/27, 100/28, 100/29, 100/30, 100/31, 100/32, 100/33, 100/34, 100/35, 100/36, 100/37, 100/38, 100/39, 100/40, 100/41, 100/42, 100/43, 100/44, 100/45, 100/46, 100/47, 100/48, 100/49, 100/50, 100/51, 100/52, 100/53, 100/54, 100/55, 100/56, 100/57, 100/58, 100/59, 100/60, 100/61, 100/62, 100/63, 100/64, 100/65, 100/66, 100/67, 100/68, 100/69, 100/70, 100/71, 100/72, 100/73, 100/74, 100/75, 100/76, 100/77, 100/78, 100/79, 100/80, 100/81, 100/82, 100/83, 100/84, 100/85, 100/86, 100/87, 100/88, 100/89, 100/90, 100/91, 100/92, 100/93, 100/94, 100/95, 100/96, 100/97, 100/98, 100/99, 100/100, 100/101, 100/102, 100/103, 100/104, 100/105, 100/106, 100/107, 100/108, 100/109, 100/110, 100/111, 100/112, 100/113, 100/114, 100/115, 100/116, 100/117, 100/118, 100/119, 100/120, 100/121, 100/122, 100/123, 100/124, 100/125, 100/126, 100/127, 100/128, 100/129, 100/130, 100/131, 100/132, 100/133, 100/134, 100/135, 100/136, 100/137, 100/138, 100/139, 100/140, 100/141, 100/142, 100/143, 100/144, 100/145, 100/146, 100/147, 100/148, 100/149, 100/150, 100/151, 100/152, 100/153, 100/154, 100/155, 100/156, 100/157, 100/158, 100/159, 100/160, 100/161, 100/162, 100/163, 100/164, 100/165, 100/166, 100/167, 100/168, 100/169, 100/170, 100/171, 100/172, 100/173, 100/174, 100/175, 100/176, 100/177, 100/178, 100/179, 100/180, 100/181, 100/182, 100/183, 100/184, 100/185, 100/186, 100/187, 100/188, 100/189, 100/190, 100/191, 100/192, 100/193, 100/194, 100/195, 100/196, 100/197, 100/198, 100/199, 100/200, 100/201, 100/202, 100/203, 100/204, 100/205, 100/206, 100/207, 100/208, 100/209, 100/210, 100/211, 100/212, 100/213, 100/214, 100/215, 100/216, 100/217, 100/218, 100/219, 100/220, 100/221, 100/222, 100/223, 100/224, 100/225, 100/226, 100/227, 100/228, 100/229, 100/230, 100/231, 100/232, 100/233, 100/234, 100/235, 100/236, 100/237, 100/238, 100/239, 100/240, 100/241, 100/242, 100/243, 100/244, 100/245, 100/246, 100/247, 100/248, 100/249, 100/250, 100/251, 100/252, 100/253, 100/254, 100/255, 100/256, 100/257, 100/258, 100/259, 100/260, 100/261, 100/262, 100/263, 100/264, 100/265, 100/266, 100/267, 100/268, 100/269, 100/270, 100/271, 100/272, 100/273, 100/274, 100/275, 100/276, 100/277, 100/278, 100/279, 100/280, 100/281, 100/282, 100/283, 100/284, 100/285, 100/286, 100/287, 100/288, 100/289, 100/290, 100/291, 100/292, 100/293, 100/294, 100/295, 100/296, 100/297, 100/298, 100/299, 100/300, 100/301, 100/302, 100/303, 100/304, 100/305, 100/306, 100/307, 100/308, 100/309, 100/310, 100/311, 100/312, 100/313, 100/314, 100/315, 100/316, 100/317, 100/318, 100/319, 100/320, 100/321, 100/322, 100/323, 100/324, 100/325, 100/326, 100/327, 100/328, 100/329, 100/330, 100/331, 100/332, 100/333, 100/334, 100/335, 100/336, 100/337, 100/338, 100/339, 100/340, 100/341, 100/342, 100/343, 100/344, 100/345, 100/346, 100/347, 100/348, 100/349, 100/350, 100/351, 100/352, 100/353, 100/354, 100/355, 100/356, 100/357, 100/358, 100/359, 100/360, 100/361, 100/362, 100/363, 100/364, 100/365, 100/366, 100/367, 100/368, 100/369, 100/370, 100/371, 100/372, 100/373, 100/374, 100/375, 100/376, 100/377, 100/378, 100/379, 100/380, 100/381, 100/382, 100/383, 100/384, 100/385, 100/386, 100/387, 100/388, 100/389, 100/390, 100/391, 100/392, 100/393, 100/394, 100/395, 100/396, 100/397, 100/398, 100/399, 100/400, 100/401, 100/402, 100/403, 100/404, 100/405, 100/406, 100/407, 100/408, 100/409, 100/410, 100/411, 100/412, 100/413, 100/414, 100/415, 100/416, 100/417, 100/418, 100/419, 100/420, 100/421, 100/422, 100/423, 100/424, 100/425, 100/426, 100/427, 100/428, 100/429, 100/430, 100/431, 100/432, 100/433, 100/434, 100/435, 100/436, 100/437, 100/438, 100/439, 100/440, 100/441, 100/442, 100/443, 100/444, 100/445, 100/446, 100/447, 100/448, 100/449, 100/450, 100/451, 100/452, 100/453, 100/454, 100/455, 100/456, 100/457, 100/458, 100/459, 100/460, 100/461, 100/462, 100/463, 100/464, 100/465, 100/466, 100/467, 100/468, 100/469, 100/470, 100/471, 100/472, 100/473, 100/474, 100/475, 100/476, 100/477, 100/478, 100/479, 100/480, 100/481, 100/482, 100/483, 100/484, 100/485, 100/486, 100/487, 100/488, 100/489, 100/490, 100/491, 100/492, 100/493, 100/494, 100/495, 100/496, 100/497, 100/498, 100/499, 100/500, 100/501, 100/502, 100/503, 100/504, 100/505, 100/506, 100/507, 100/508, 100/509, 100/510, 100/511, 100/512, 100/513, 100/514, 100/515, 100/516, 100/517, 100/518, 100/519, 100/520, 100/521, 100/522, 100/523, 100/524, 100/525, 100/526, 100/527, 100/528, 100/529, 100/530, 100/531, 100/532, 100/533, 100/534, 100/535, 100/536, 100/537, 100/538, 100/539, 100/540, 100/541, 100/542, 100/543, 100/544, 100/545, 100/546, 100/547, 100/548, 100/549, 100/550, 100/551, 100/552, 100/553, 100/554, 100/555, 100/556, 100/557, 100/558, 100/559, 100/560, 100/561, 100/562, 100/563, 100/564, 100/565, 100/566, 100/567, 100/568, 100/569, 100/570, 100/571, 100/572, 100/573, 100/574, 100/575, 100/576, 100/577, 100/578, 100/579, 100/580, 100/581, 100/582, 100/583, 100/584, 100/585, 100/586, 100/587, 100/588, 100/589, 100/590, 100/591, 100/592, 100/593, 100/594, 100/595, 100/596, 100/597, 100/598, 100/599, 100/600, 100/601, 100/602, 100/603, 100/604, 100/605, 100/606, 100/607, 100/608, 100/609, 100/610, 100/611, 100/612, 100/613, 100/614, 100/615, 100/616, 100/617, 100/618, 100/619, 100/620, 100/621, 100/622, 100/623, 100/624, 100/625, 100/626, 100/627, 100/628, 100/629, 100/630, 100/631, 100/632, 100/633, 100/634, 100/635, 100/636, 100/637, 100/638, 100/639, 100/640, 100/641, 100/642, 100/643, 100/644, 100/645, 100/646, 100/647, 100/648, 100/649, 100/650, 100/651, 100/652, 100/653, 100/654, 100/655, 100/656, 100/657, 100/658, 100/659, 100/660, 100/661, 100/662, 100/663, 100/664, 100/665, 100/666, 100/667, 100/668, 100/669, 100/670, 100/671, 100/672, 100/673, 100/674, 100/675, 100/676, 100/677, 100/678, 100/679, 100/680, 100/681, 100/682, 100/683, 100/684, 100/685, 100/686, 100/687, 100/688, 100/689, 100/690, 100/691, 100/692, 100/693, 100/694, 100/695, 100/696, 100/697, 100/698, 100/699, 100/700, 100/701, 100/702, 100/703, 100/704, 100/705, 100/706, 100/707, 100/708, 100/709, 100/710, 100/711, 100/712, 100/713, 100/714, 100/715, 100/716, 100/717, 100/718, 100/719, 100/720, 100/721, 100/722, 100/723, 100/724, 100/725, 100/726, 100/727, 100/728, 100/729, 100/730, 100/731, 100/732, 100/733, 100/734, 100/735, 100/736, 100/737, 100/738, 100/739, 100/740, 100/741, 100/742, 100/743, 100/744, 100/745, 100/746, 100/747, 100/748, 100/749, 100/750, 100/751, 100/752, 100/753, 100/754, 100/755, 100/756, 100/757, 100/758, 100/759, 100/760, 100/761, 100/762, 100/763, 100/764, 100/765, 100/766, 100/767, 100/768, 100/769, 100/770, 100/771, 100/772, 100/773, 100/774, 100/775, 100/776, 100/777, 100/778, 100/779, 100/780, 100/781, 100/782, 100/783, 100/784, 100/785, 100/786, 100/787, 100/788, 100/789, 100/790, 100/791, 100/792, 100/793, 100/794, 100/795, 100/796, 100/797, 100/798, 100/799, 100/800, 100/801, 100/802, 100/803, 100/804, 100/805, 100/806, 100/807, 100/808, 100/809, 100/810, 100/811, 100/812, 100/813, 100/814, 100/815, 100/816, 100/817, 100/818, 100/819, 100/820, 100/821, 100/822, 100/823, 100/824, 100/825, 100/826, 100/827, 100/828, 100/829, 100/830, 100/831, 100/832, 100/833, 100/834, 100/835, 100/836, 100/837, 100/838, 100/839, 100/840, 100/841, 100/842, 100/843, 100/844, 100/845, 100/846, 100/847, 100/848, 100/849, 100/850, 100/851, 100/852, 100/853, 100/854, 100/855, 100/856, 100/857, 100/858, 100/859, 100/860, 100/861, 100/862, 100/863, 100/864, 100/865, 100/866, 100/867, 100/868, 100/869, 100/870, 100/871, 100/872, 100/873, 100/874, 100/875, 100/876, 100/877, 100/878, 100/879, 100/880, 100/881, 100/882, 100/883, 100/884, 100/885, 100/886, 100/887, 100/888, 100/889, 100/890, 100/891, 100/892, 100/893, 100/894, 100/895, 100/896, 100/897, 100/898, 100/899, 100/900, 100/901, 100/902, 100/903, 100/904, 100/905, 100/906, 100/907, 100/908, 100/909, 100/910, 100/911, 100/912, 100/913, 100/914, 100/915, 100/916, 100/917, 100/918, 100/919, 100/920, 100/921, 100/922, 100/923, 100/924, 100/925, 100/926, 100/927, 100/928, 100/929, 100/930, 100/931, 100/932, 100/933, 100/934, 100/935, 100/936, 100/937, 100/938, 100/939, 100/940, 100/941, 100/942, 100/943, 100/944, 100/945, 100/946, 100/947, 100/948, 100/949, 100/950, 100/951, 100/952, 100/953, 100/954, 100/955, 100/956, 100/957, 100/958, 100/959, 100/960, 100/961, 100/962, 100/963, 100/964, 100/965, 100/966, 100/967, 100/968, 100/969, 100/970, 100/971, 100/972, 100/973, 100/974, 100/975, 100/976, 100/977, 100/978, 100/979, 100/980, 100/981, 100/982, 100/983, 100/984, 100/985, 100/986, 100/987, 100/988, 100/989, 100/990, 100/991, 100/992, 100/993, 100/994, 100/995, 100/996, 100/997, 100/998, 100/999, 100/1000, 100/1001, 100/1002, 100/1003, 100/1004, 100/1005, 100/1006, 100/1007, 100/1008, 100/1009, 100/1010, 100/1011, 100/1012, 100/1013, 100/1014, 100/1015, 100/1016, 100/1017, 100/1018, 100/1019, 100/1020, 100/1021, 100/1022, 100/1023, 100/1024, 100/1025, 100/1026, 100/1027, 100/1028, 100/1029, 100/1030, 100/1031, 100/1032, 100/1033, 100/1034, 100/1035, 100/1036, 100/1037, 100/1038, 100/1039, 100/1040, 100/1041, 100/1042, 100/1043, 100/1044, 100/1045, 100/1046, 100/1047, 100/1048, 100/1049, 100/1050, 100/1051, 100/1052, 100/1053, 100/1054, 100/1055, 100/1056, 100/1057, 100/1058, 100/1059, 100/1060, 100/1061, 100/1062, 100/1063, 100/1064, 100/1065, 100/1066, 100/1067, 100/1068, 100/1069, 100/1070, 100/1071, 100/1072, 100/1073, 100/1074, 100/1075, 100/1076, 100/1077, 100/1078, 100/1079, 100/1080, 100/1081, 100/1082, 100/1083, 100/1084, 100/1085, 100/1086, 100/1087, 100/1088, 100/1089, 100/1090, 100/1091, 100/1092, 100/1093, 100/1094, 100/1095, 100/1096, 100/1097, 100/1098, 100/1099, 100/1100, 100/1101, 100/1102, 100/1103, 100/1104, 100/1105, 100/1106, 100/1107, 100/1108, 100/1109, 100/1110, 100/1111, 100/1112, 100/1113, 100/1114, 100/1115, 100/1116, 100/1117, 100/1118, 100/1119, 100/1120, 100/1121, 100/1122, 100/1123, 100/1124, 100/1125, 100/1126, 100/1127, 100/1128, 100/1129, 100/1130, 100/1131, 100/1132, 100/1133, 100/1134, 100/1135, 100/1136, 100/1137, 100/1138, 100/1139, 100/1140, 100/1141, 100/1142, 100/1143, 100/1144, 100/1145, 100/1146, 100/1147, 100/1148, 100/1149, 100/1150, 100/1151, 100/1152, 100/1153, 100/1154, 100/1155, 100/1156, 100/1157, 100/1158, 100/1159, 100/1160, 100/1161, 100/1162, 100/1163, 100/1164, 100/1165, 100/1166, 100/1167, 100/1168, 100/1169, 100/1170, 100/1171, 100/1172, 100/1173, 100/1174, 100/1175, 100/1176, 100/1177, 100/1178, 100/1179, 100/1180, 100/1181, 100/1182, 100/1183, 100/1184, 100/1185, 100/1186, 100/1187, 100/1188, 100/1189, 100/1190, 100/1191, 100/1192, 100/1193, 100/1194, 100/1195, 100/1196, 100/1197, 100/1198, 100/1199, 100/1200, 100/1201, 100/1202, 100/1203, 100/1204, 100/1205, 100/1206, 100/1207, 100/1208, 100/1209, 100/1210, 100/1211, 100/1212, 100/1213, 100/1214, 100/1215, 100/1216, 100/1217, 100/1218, 100/1219, 100/1220, 100/1221, 100/1222, 100/1223, 100/1224, 100/1225, 100/1226, 100/1227, 100/1228, 100/1229, 100/1230, 100/1231, 100/1232, 100/1233, 100/1234, 100/1235, 100/1236, 100/1237, 100/1238, 100/1239, 100/1240, 100/1241, 100/1242, 100/1243, 100/1244, 100/1245, 100/1246, 100/1247, 100/1248, 100/1249, 100/1250, 100/1251, 100/1252,