

SCHEDULE OF OPENINGS (WINDOWS) - ALUMINIUM

SR. NO.	TYPE	SIZE (H x W)	DESCRIPTION
1	ALUMINIUM WINDOW	1200 x 1500	ALUMINIUM WINDOW
2	ALUMINIUM WINDOW	1500 x 1200	ALUMINIUM WINDOW
3	ALUMINIUM WINDOW	1200 x 1200	ALUMINIUM WINDOW
4	ALUMINIUM WINDOW	1500 x 1500	ALUMINIUM WINDOW
5	ALUMINIUM WINDOW	1200 x 1800	ALUMINIUM WINDOW
6	ALUMINIUM WINDOW	1800 x 1200	ALUMINIUM WINDOW
7	ALUMINIUM WINDOW	1200 x 1000	ALUMINIUM WINDOW
8	ALUMINIUM WINDOW	1000 x 1200	ALUMINIUM WINDOW
9	ALUMINIUM WINDOW	1200 x 1500	ALUMINIUM WINDOW
10	ALUMINIUM WINDOW	1500 x 1200	ALUMINIUM WINDOW
11	ALUMINIUM WINDOW	1200 x 1200	ALUMINIUM WINDOW
12	ALUMINIUM WINDOW	1500 x 1500	ALUMINIUM WINDOW
13	ALUMINIUM WINDOW	1200 x 1800	ALUMINIUM WINDOW
14	ALUMINIUM WINDOW	1800 x 1200	ALUMINIUM WINDOW
15	ALUMINIUM WINDOW	1200 x 1000	ALUMINIUM WINDOW
16	ALUMINIUM WINDOW	1000 x 1200	ALUMINIUM WINDOW
17	ALUMINIUM WINDOW	1200 x 1500	ALUMINIUM WINDOW
18	ALUMINIUM WINDOW	1500 x 1200	ALUMINIUM WINDOW
19	ALUMINIUM WINDOW	1200 x 1200	ALUMINIUM WINDOW
20	ALUMINIUM WINDOW	1500 x 1500	ALUMINIUM WINDOW
21	ALUMINIUM WINDOW	1200 x 1800	ALUMINIUM WINDOW
22	ALUMINIUM WINDOW	1800 x 1200	ALUMINIUM WINDOW
23	ALUMINIUM WINDOW	1200 x 1000	ALUMINIUM WINDOW
24	ALUMINIUM WINDOW	1000 x 1200	ALUMINIUM WINDOW
25	ALUMINIUM WINDOW	1200 x 1500	ALUMINIUM WINDOW
26	ALUMINIUM WINDOW	1500 x 1200	ALUMINIUM WINDOW
27	ALUMINIUM WINDOW	1200 x 1200	ALUMINIUM WINDOW
28	ALUMINIUM WINDOW	1500 x 1500	ALUMINIUM WINDOW
29	ALUMINIUM WINDOW	1200 x 1800	ALUMINIUM WINDOW
30	ALUMINIUM WINDOW	1800 x 1200	ALUMINIUM WINDOW
31	ALUMINIUM WINDOW	1200 x 1000	ALUMINIUM WINDOW
32	ALUMINIUM WINDOW	1000 x 1200	ALUMINIUM WINDOW
33	ALUMINIUM WINDOW	1200 x 1500	ALUMINIUM WINDOW
34	ALUMINIUM WINDOW	1500 x 1200	ALUMINIUM WINDOW
35	ALUMINIUM WINDOW	1200 x 1200	ALUMINIUM WINDOW
36	ALUMINIUM WINDOW	1500 x 1500	ALUMINIUM WINDOW
37	ALUMINIUM WINDOW	1200 x 1800	ALUMINIUM WINDOW
38	ALUMINIUM WINDOW	1800 x 1200	ALUMINIUM WINDOW
39	ALUMINIUM WINDOW	1200 x 1000	ALUMINIUM WINDOW
40	ALUMINIUM WINDOW	1000 x 1200	ALUMINIUM WINDOW
41	ALUMINIUM WINDOW	1200 x 1500	ALUMINIUM WINDOW
42	ALUMINIUM WINDOW	1500 x 1200	ALUMINIUM WINDOW
43	ALUMINIUM WINDOW	1200 x 1200	ALUMINIUM WINDOW
44	ALUMINIUM WINDOW	1500 x 1500	ALUMINIUM WINDOW
45	ALUMINIUM WINDOW	1200 x 1800	ALUMINIUM WINDOW
46	ALUMINIUM WINDOW	1800 x 1200	ALUMINIUM WINDOW
47	ALUMINIUM WINDOW	1200 x 1000	ALUMINIUM WINDOW
48	ALUMINIUM WINDOW	1000 x 1200	ALUMINIUM WINDOW
49	ALUMINIUM WINDOW	1200 x 1500	ALUMINIUM WINDOW
50	ALUMINIUM WINDOW	1500 x 1200	ALUMINIUM WINDOW

NOTES
 1. ALL LEVELS TO BE AS SHOWN UNLESS OTHERWISE SPECIFIED.
 2. ALL LEVELS TO BE FINISHED UNLESS OTHERWISE SPECIFIED.
 3. ALL WORK TO BE DONE IN ACCORDANCE WITH THE NATIONAL BUILDING CODE OF INDIA.
 4. ALL WORK TO BE DONE IN ACCORDANCE WITH THE NATIONAL BUILDING CODE OF INDIA.
 5. ALL WORK TO BE DONE IN ACCORDANCE WITH THE NATIONAL BUILDING CODE OF INDIA.

LEGENDS:-
 1. ALUMINIUM WINDOW
 2. ALUMINIUM WINDOW
 3. ALUMINIUM WINDOW
 4. ALUMINIUM WINDOW
 5. ALUMINIUM WINDOW
 6. ALUMINIUM WINDOW
 7. ALUMINIUM WINDOW
 8. ALUMINIUM WINDOW
 9. ALUMINIUM WINDOW
 10. ALUMINIUM WINDOW
 11. ALUMINIUM WINDOW
 12. ALUMINIUM WINDOW
 13. ALUMINIUM WINDOW
 14. ALUMINIUM WINDOW
 15. ALUMINIUM WINDOW
 16. ALUMINIUM WINDOW
 17. ALUMINIUM WINDOW
 18. ALUMINIUM WINDOW
 19. ALUMINIUM WINDOW
 20. ALUMINIUM WINDOW
 21. ALUMINIUM WINDOW
 22. ALUMINIUM WINDOW
 23. ALUMINIUM WINDOW
 24. ALUMINIUM WINDOW
 25. ALUMINIUM WINDOW
 26. ALUMINIUM WINDOW
 27. ALUMINIUM WINDOW
 28. ALUMINIUM WINDOW
 29. ALUMINIUM WINDOW
 30. ALUMINIUM WINDOW
 31. ALUMINIUM WINDOW
 32. ALUMINIUM WINDOW
 33. ALUMINIUM WINDOW
 34. ALUMINIUM WINDOW
 35. ALUMINIUM WINDOW
 36. ALUMINIUM WINDOW
 37. ALUMINIUM WINDOW
 38. ALUMINIUM WINDOW
 39. ALUMINIUM WINDOW
 40. ALUMINIUM WINDOW
 41. ALUMINIUM WINDOW
 42. ALUMINIUM WINDOW
 43. ALUMINIUM WINDOW
 44. ALUMINIUM WINDOW
 45. ALUMINIUM WINDOW
 46. ALUMINIUM WINDOW
 47. ALUMINIUM WINDOW
 48. ALUMINIUM WINDOW
 49. ALUMINIUM WINDOW
 50. ALUMINIUM WINDOW

KEY PLAN
 SCALE: 1:2000

CERTIFICATE OF ARCHITECT
 I DO HEREBY CERTIFY THAT THE ARCHITECTURAL DESIGN AND SUPERSTRUCTURE DRAWING OF THE BUILDING HAS BEEN DRAWN BY ME OR UNDER MY CLOSE PERSONAL SUPERVISION AND IN ACCORDANCE WITH THE NATIONAL BUILDING CODE OF INDIA AND CERTIFIED THAT IT IS SAFE AND STABLE IN ALL RESPECTS.
M. K. ROY
 ARCHITECT
 M. K. ROY ARCHITECTS
 20/1, BANGALORE ROAD, BANGALORE-560025
 CONTACT NO. 98451 11111

CERTIFICATE OF STRUCTURAL ENGINEER
 I DO HEREBY CERTIFY THAT THE STRUCTURAL DESIGN AND SUPERSTRUCTURE DRAWING OF THE BUILDING HAS BEEN DRAWN BY ME OR UNDER MY CLOSE PERSONAL SUPERVISION AND IN ACCORDANCE WITH THE NATIONAL BUILDING CODE OF INDIA AND CERTIFIED THAT IT IS SAFE AND STABLE IN ALL RESPECTS.
M. K. ROY
 STRUCTURAL ENGINEER
 M. K. ROY ARCHITECTS
 20/1, BANGALORE ROAD, BANGALORE-560025
 CONTACT NO. 98451 11111

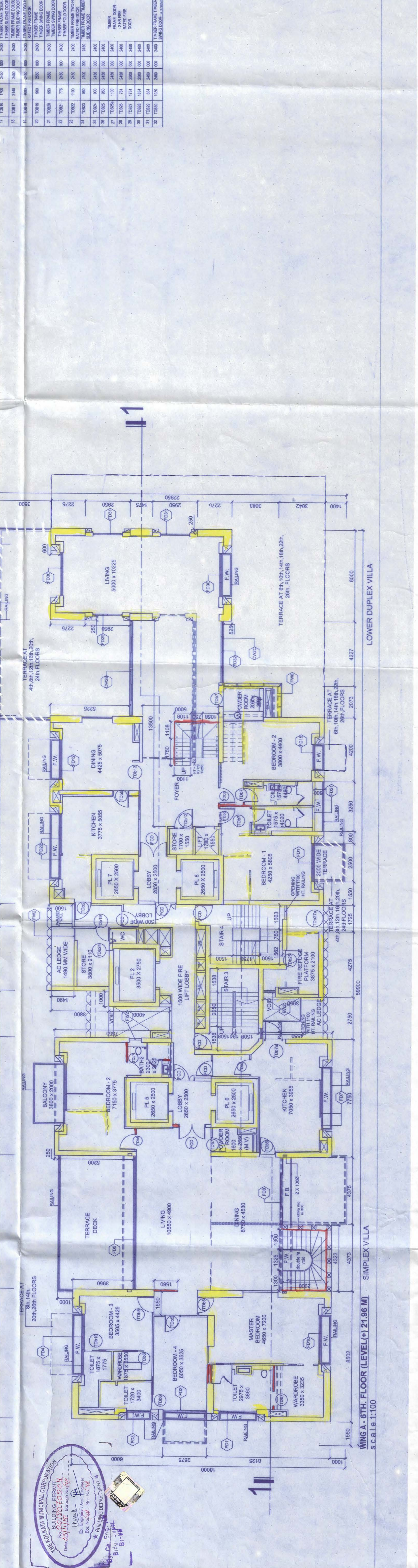
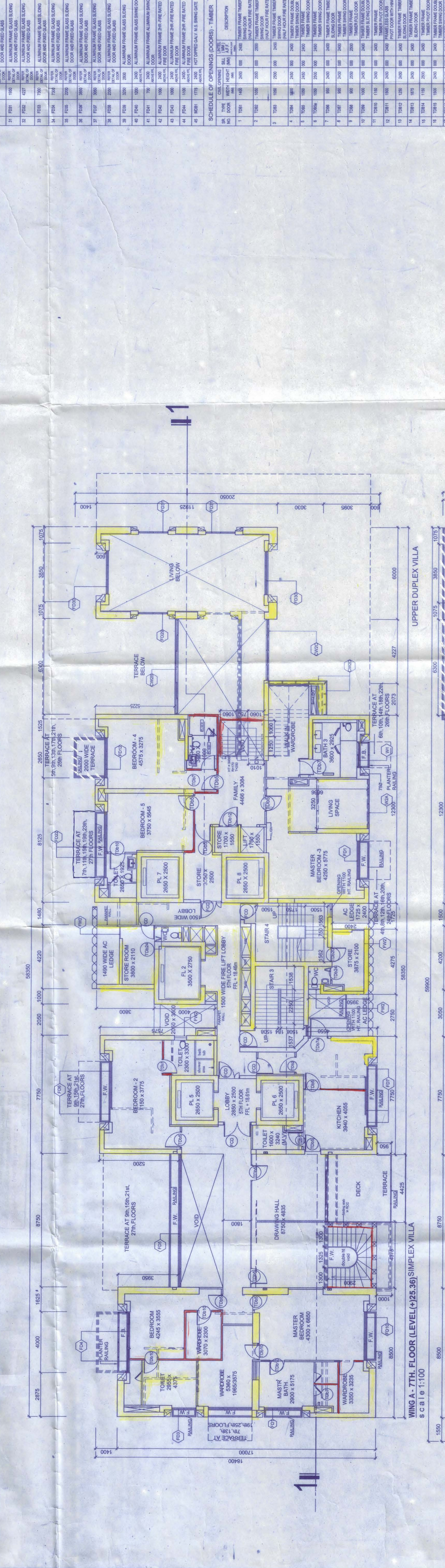
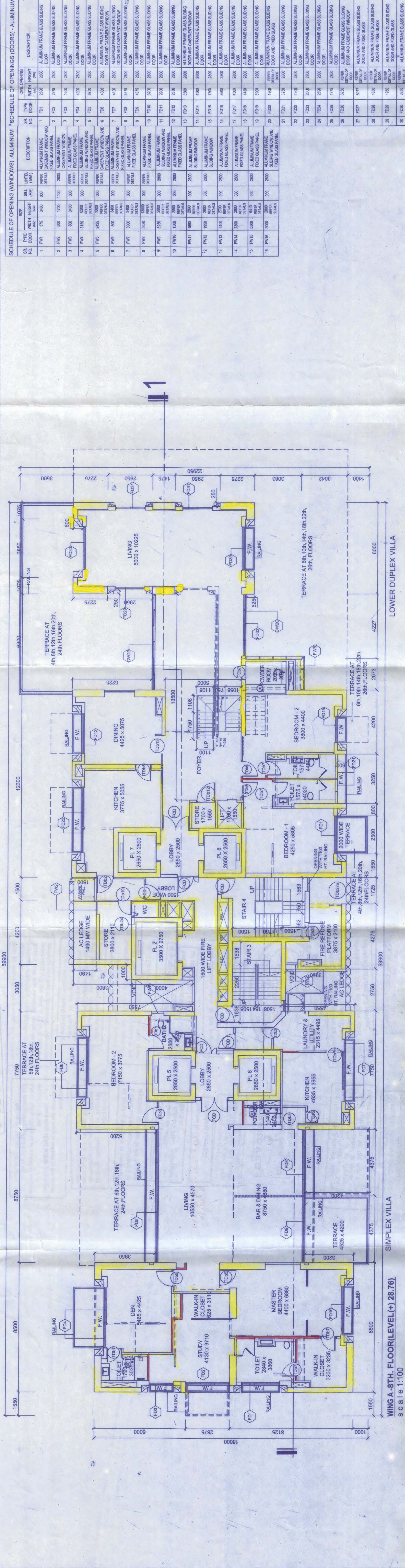
FORUM PROJECTS PVT. LTD.
 4/1 RED CROSS PLACE,
 KOLKATA, 700 001.

PROPOSED ADDITION OF TWO FLOORS US 30A OF KMC ACT, 1980 READ WITH UR 08A OF KMC BUILDING RULES, 2009 OVER AN EXISTING SANCTIONED (B-G-XXXXV) STORED ALTERATIONS UR 28(9A) & 29(1) OF KOLKATA MUNICIPAL CORPORATION BUILDING RULES, 2009 AT PREMISES NO. 1007/A, WING A, 6TH FLOOR, SIMPLEX VILLA, 28TH FLOOR, NO 88, BOROUGH-VII, KOLKATA - 700 048.

Reference:
 (1) Building Permit issued by KMC vide B.P. No. 28(9A) dated 06.08.2011.
 (2) Sanctioning Order No. 28(9A) dated 06.08.2011.
 (3) Sanctioning Order No. 29(1) dated 06.08.2011.
 (4) Sanctioning Order No. 29(1) dated 06.08.2011.
 (5) Sanctioning Order No. 29(1) dated 06.08.2011.
 (6) Sanctioning Order No. 29(1) dated 06.08.2011.
 (7) Sanctioning Order No. 29(1) dated 06.08.2011.
 (8) Sanctioning Order No. 29(1) dated 06.08.2011.
 (9) Sanctioning Order No. 29(1) dated 06.08.2011.
 (10) Sanctioning Order No. 29(1) dated 06.08.2011.

arc studio.
 50, PEARL POND ROAD, BANGALORE-560028

RESUBMISSION TO K.M.C.
 STAGE: MUNICIPAL
 DIRECTION: 7 OF 26
 Current Revision: R3
 Start Date: 27-JULY-18
 Last saved Date: 29-Oct-18
 Project Code: fp - 28
 Billing Block: WING-A
 Floor: FLOOR PLAN
 Drawing: FLOOR PLAN LEVEL-6,7 & 8



FORUM PROJECTS PVT. LTD. 4/1 RED CROSS PLACE, KOLKATA, 700 001.
 arc studio. 50, PEARL POND ROAD, BANGALORE-560028.
 RESUBMISSION TO K.M.C. STAGE: MUNICIPAL, DIRECTION: 7 OF 26, Current Revision: R3.