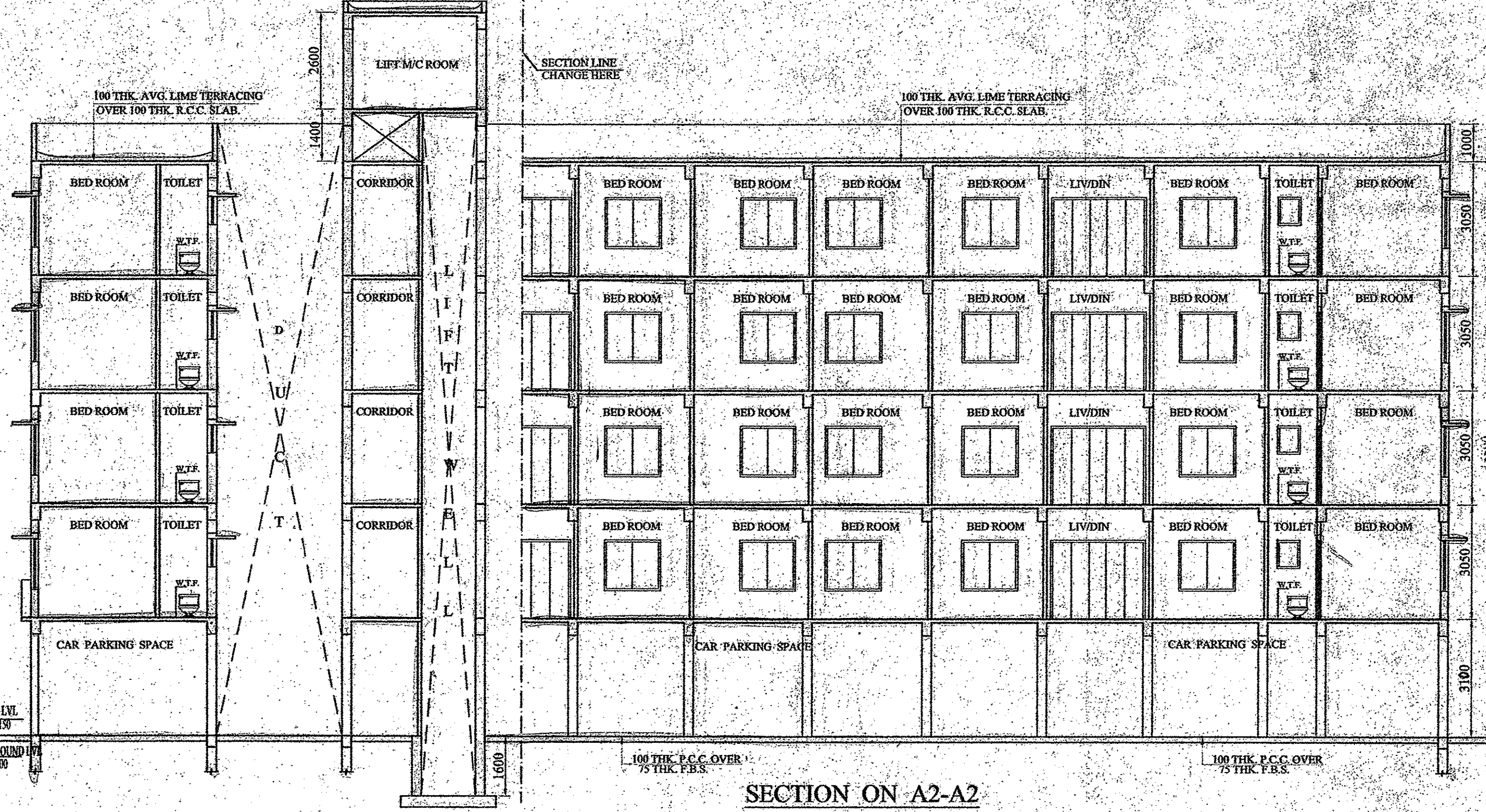
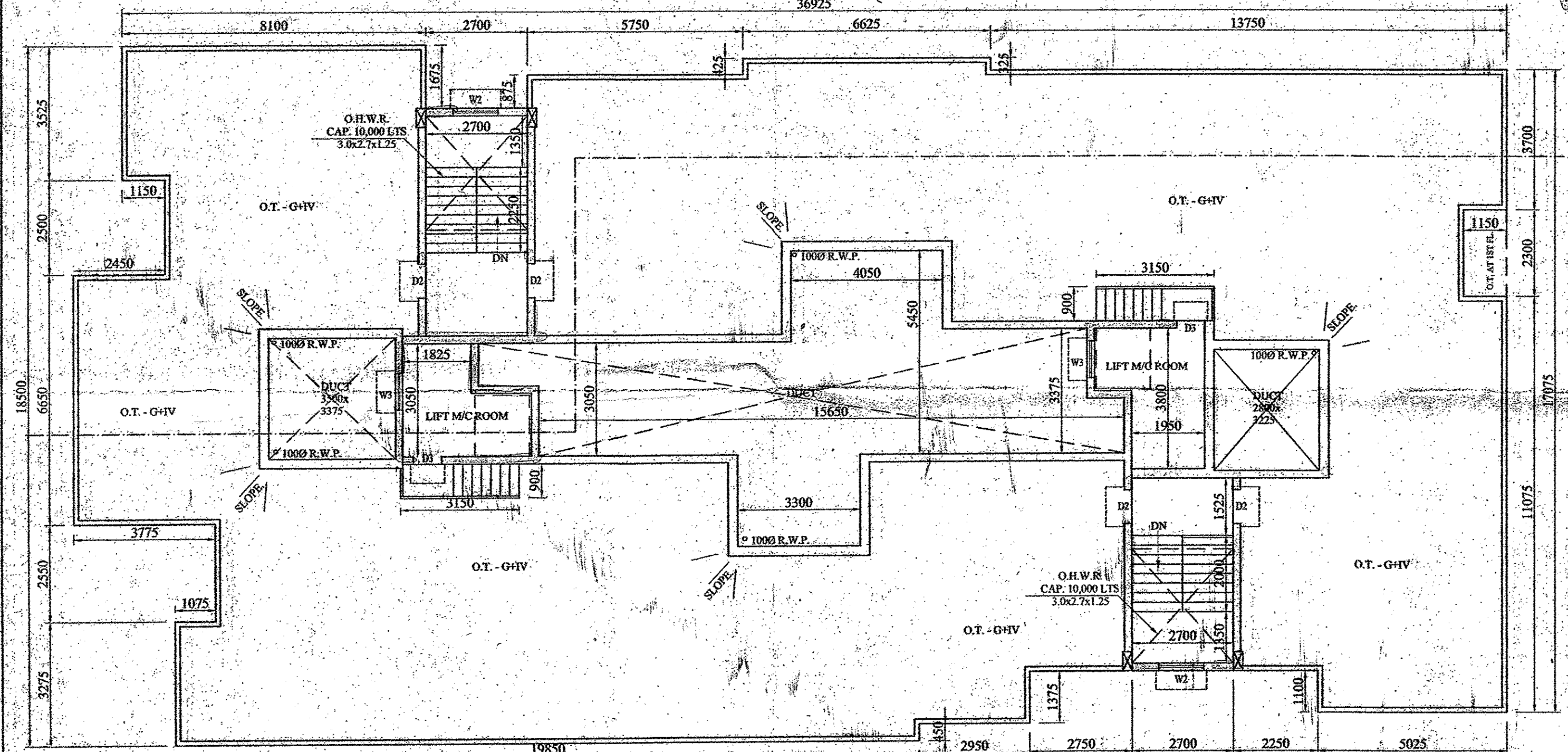


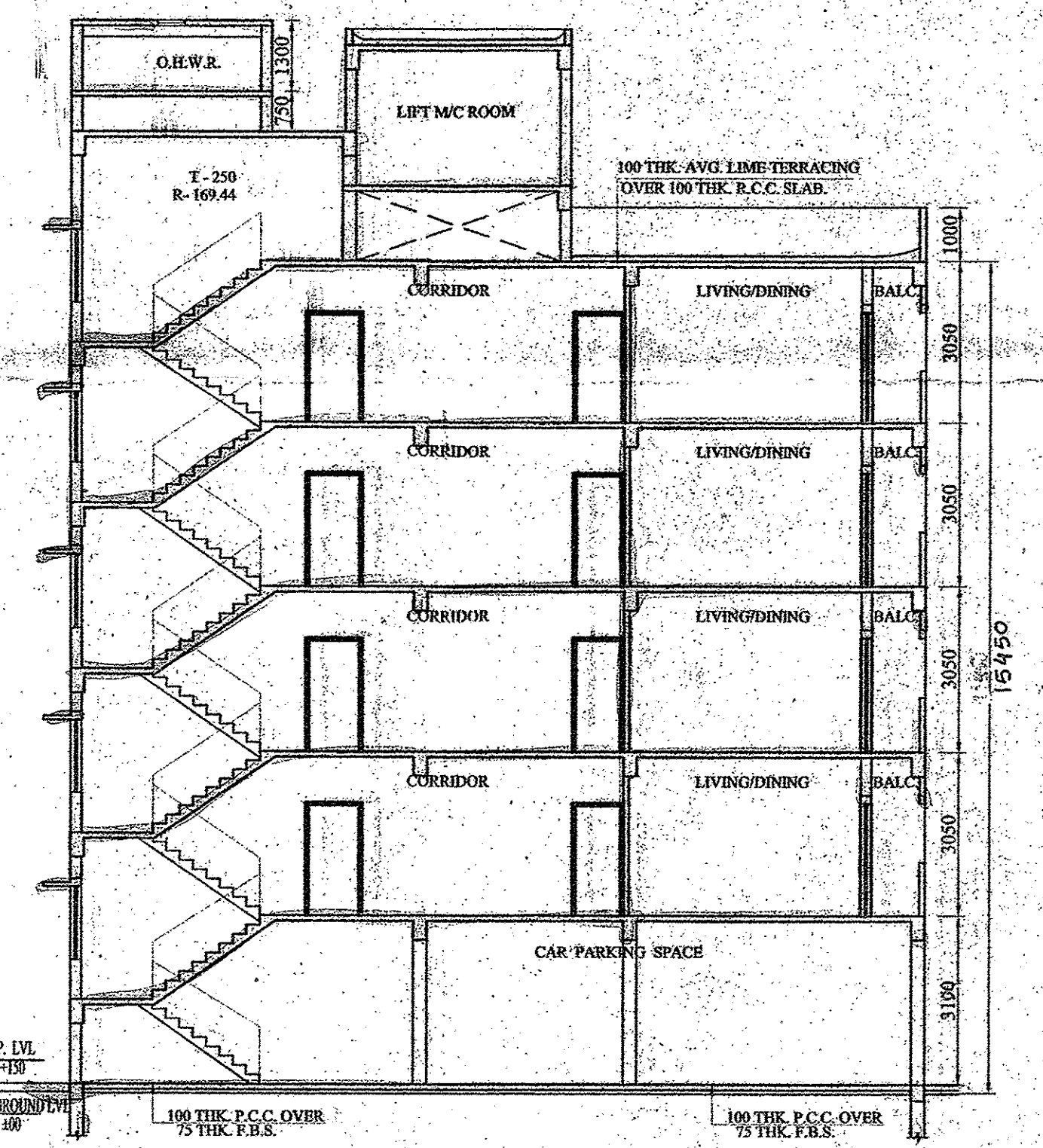
FRONT ELEVATION



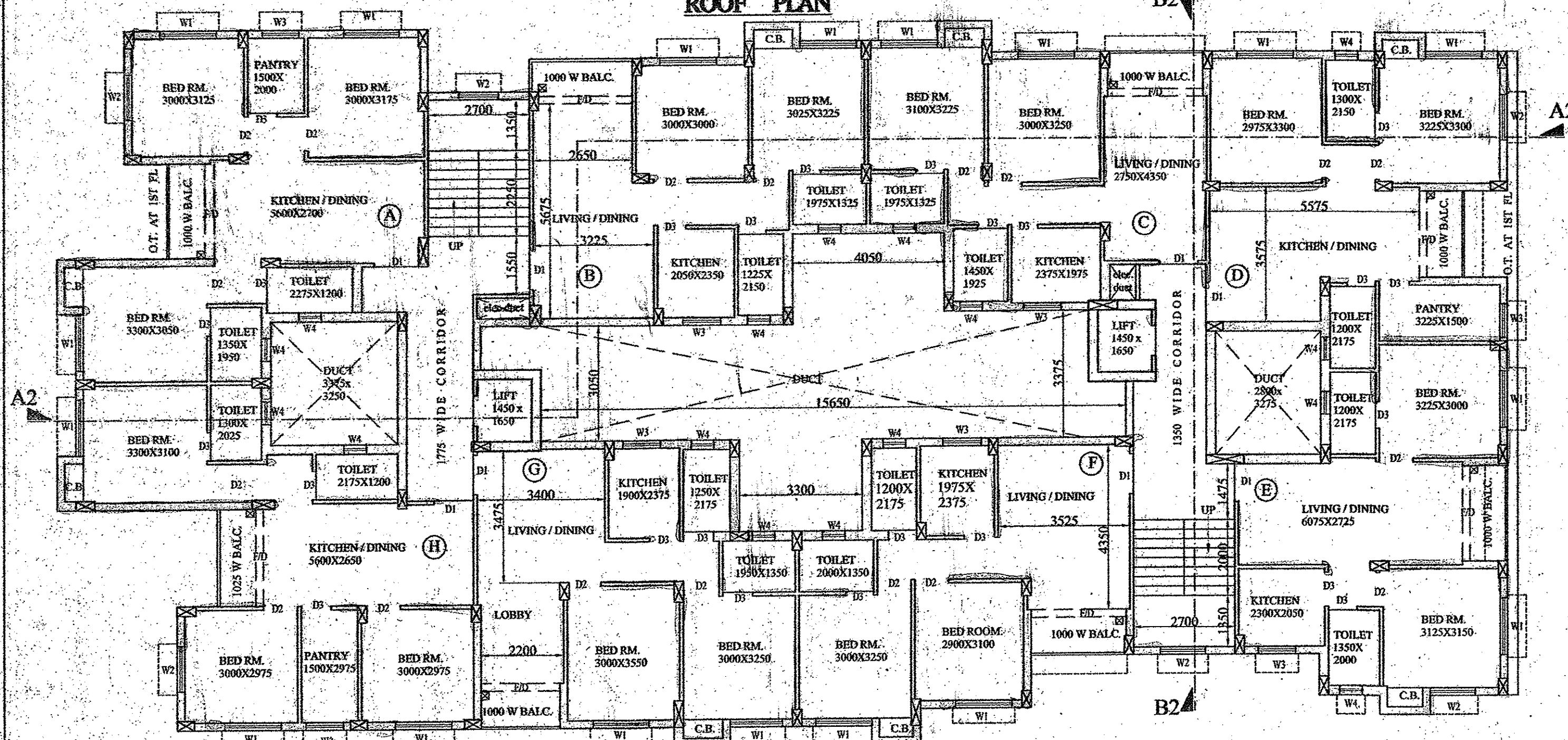
SECTION ON A2-A2



ROOF PLAN



SECTION ON B2-B2



TYPICAL FLOOR PLAN

DOOR & WINDOW SCHEDULE

MARK.	SIZE	MARK.	SIZE
W1	1500x1350	D1	1050 x 2100
W2	1200x1350	D2	900 x 2100
W3	1000x1050	D3	750x2100
W4	600x750		

NOTES

1. ALL DIMENSIONS ARE IN MM.
2. ALL EXTERNAL WALLS ARE 200 TH. AND INTERNAL WALLS ARE 75 TH. IF NOT STATED OTHERWISE
3. SCALE - 1:100
4. SAFE BEARING CAPACITY OF SOIL 7 MT/SQ.M. ASSUMED
5. DEPTH OF SEPTIC TANK AND SEMI U.G. WATER RESERVOIR WILL NOT EXCEED THE DEPTH OF BUILDING FOUNDATION
6. ALL SORTS OF PRECAUTIONARY MEASURE WILL BE TAKEN AT THE TIME OF CONSTRUCTION

SPECIFICATIONS

1. 75 TH. 1ST. CLASS BRICK SOLING IN FOUNDATION & FLOOR
2. 150 TH. 1:3:6 (CEMENT,SAND & KHOA) CEMENT CONCRETE IN FOUNDATION & FLOOR
3. FOUNDATION BRICK WORK WILL BE 1ST CLASS BRICK WITH 1:6 CEMENT MORTAR
4. 125 TH. & 75 TH. PARTITION BRICK WORK WILL BE 1:5 CEMENT MORTAR
5. 200TH. EXTERNAL WALLS WILL BE 1:6 CEMENT MORTAR
6. 25 TH. D.P.C. WILL BE 1:2:4 WITH PROPER WATER PROOFING COMPOUND
7. R.C.C. CONC. MIX WILL BE 1:2:4 CEMENT SAND & STONE CHIPS MATERIALS AND MIXING
8. ROOF AND LIMB TERRACING WILL BE 100 TH. WITH THEIR PROPER
9. CEILING AND ALL R.C. PLASTER WILL BE 12mm. TH. 1:4 CEMENT MORTAR
10. 25 MM. TH. I.P.S. FLOORING
11. GRADE OF CONCRETE M-20
12. ALL BUILDING MATERIALS WILL BE AS PER I.S. CODE & C.B.C. 1984

STRUCTURAL CERTIFICATE

THE STRUCTURAL DESIGN AND DRAWING OF BOTH FOUNDATION AND CONSIDERING ALL POSSIBLE LOADS INCLUDING THE SEISMIC LOAD AS SUPER STRUCTURE OF THE BUILDING HAS BEEN MADE BY ME PER NATIONAL BUILDING CODE OF INDIA AND CERTIFIED THAT IT IS SAFE AND STABLE IN ALL RESPECT.

SUBIR CHANDRA SANYAL
B.C.E., A.M.I., STRUCT. E. (I)
E.S.E. NO. 840, CLASS-I
E.S.E. NO. 007, CLASS-I
RAJPUR-SONARPUR MUNICIPALITY

SIGNATURE OF STRUCTURAL ENGINEER (E.S. NO. 007)

DECLARATION OF E.B.A.

I HAVE CERTIFIED ON THE PLAN ITSELF WITH FULL RESPONSIBILITY THAT BUILDING RULES 1990 AS AMENDED FROM TIME TO TIME AND THAT THE SITE CONDITIONS INCLUDING THE ADJUTING ROAD CONFORM WITH THE PLAN AND THAT IT IS A BUILDABLE SITE AND NOT A TANK OR A FILLED UP LAND.

SUBIR CHANDRA SANYAL
B.C.E., A.M.I., STRUCT. E. (I)
E.S.E. NO. 840, CLASS-I
E.S.E. NO. 007, CLASS-I
RAJPUR-SONARPUR MUNICIPALITY

SIGNATURE OF E.B.A.

- (1) ANAND SALES PRIVATE LIMITED, (2) ANAND SALES PRIVATE LIMITED, (3) ANAND SALES PRIVATE LIMITED, (4) ANAND SALES PRIVATE LIMITED, (5) ANAND SALES PRIVATE LIMITED, (6) ANAND SALES PRIVATE LIMITED, (7) ANAND SALES PRIVATE LIMITED, (8) ANAND SALES PRIVATE LIMITED, (9) ANAND SALES PRIVATE LIMITED, (10) ANAND SALES PRIVATE LIMITED, (11) ANAND SALES PRIVATE LIMITED, (12) ANAND SALES PRIVATE LIMITED, (13) ANAND SALES PRIVATE LIMITED, (14) ANAND SALES PRIVATE LIMITED, (15) ANAND SALES PRIVATE LIMITED, (16) ANAND SALES PRIVATE LIMITED, (17) ANAND SALES PRIVATE LIMITED, (18) ANAND SALES PRIVATE LIMITED, (19) ANAND SALES PRIVATE LIMITED, (20) ANAND SALES PRIVATE LIMITED, (21) ANAND SALES PRIVATE LIMITED, (22) ANAND SALES PRIVATE LIMITED, (23) ANAND SALES PRIVATE LIMITED, (24) ANAND SALES PRIVATE LIMITED, (25) ANAND SALES PRIVATE LIMITED, (26) ANAND SALES PRIVATE LIMITED, (27) ANAND SALES PRIVATE LIMITED, (28) ANAND SALES PRIVATE LIMITED, (29) ANAND SALES PRIVATE LIMITED, (30) ANAND SALES PRIVATE LIMITED, (31) ANAND SALES PRIVATE LIMITED, (32) ANAND SALES PRIVATE LIMITED, (33) ANAND SALES PRIVATE LIMITED, (34) ANAND SALES PRIVATE LIMITED, (35) ANAND SALES PRIVATE LIMITED, (36) ANAND SALES PRIVATE LIMITED, (37) ANAND SALES PRIVATE LIMITED, (38) ANAND SALES PRIVATE LIMITED, (39) ANAND SALES PRIVATE LIMITED, (40) ANAND SALES PRIVATE LIMITED, (41) ANAND SALES PRIVATE LIMITED, (42) ANAND SALES PRIVATE LIMITED, (43) ANAND SALES PRIVATE LIMITED, (44) ANAND SALES PRIVATE LIMITED, (45) ANAND SALES PRIVATE LIMITED, (46) ANAND SALES PRIVATE LIMITED, (47) ANAND SALES PRIVATE LIMITED, (48) ANAND SALES PRIVATE LIMITED, (49) ANAND SALES PRIVATE LIMITED, (50) ANAND SALES PRIVATE LIMITED, (51) ANAND SALES PRIVATE LIMITED, (52) ANAND SALES PRIVATE LIMITED, (53) ANAND SALES PRIVATE LIMITED, (54) ANAND SALES PRIVATE LIMITED, (55) ANAND SALES PRIVATE LIMITED, (56) ANAND SALES PRIVATE LIMITED, (57) ANAND SALES PRIVATE LIMITED, (58) ANAND SALES PRIVATE LIMITED, (59) ANAND SALES PRIVATE LIMITED, (60) ANAND SALES PRIVATE LIMITED, (61) ANAND SALES PRIVATE LIMITED, (62) ANAND SALES PRIVATE LIMITED, (63) ANAND SALES PRIVATE LIMITED, (64) ANAND SALES PRIVATE LIMITED, (65) ANAND SALES PRIVATE LIMITED, (66) ANAND SALES PRIVATE LIMITED, (67) ANAND SALES PRIVATE LIMITED, (68) ANAND SALES PRIVATE LIMITED, (69) ANAND SALES PRIVATE LIMITED, (70) ANAND SALES PRIVATE LIMITED, (71) ANAND SALES PRIVATE LIMITED, (72) ANAND SALES PRIVATE LIMITED, (73) ANAND SALES PRIVATE LIMITED, (74) ANAND SALES PRIVATE LIMITED, (75) ANAND SALES PRIVATE LIMITED, (76) ANAND SALES PRIVATE LIMITED, (77) ANAND SALES PRIVATE LIMITED, (78) ANAND SALES PRIVATE LIMITED, (79) ANAND SALES PRIVATE LIMITED, (80) ANAND SALES PRIVATE LIMITED, (81) ANAND SALES PRIVATE LIMITED, (82) ANAND SALES PRIVATE LIMITED, (83) ANAND SALES PRIVATE LIMITED, (84) ANAND SALES PRIVATE LIMITED, (85) ANAND SALES PRIVATE LIMITED, (86) ANAND SALES PRIVATE LIMITED, (87) ANAND SALES PRIVATE LIMITED, (88) ANAND SALES PRIVATE LIMITED, (89) ANAND SALES PRIVATE LIMITED, (90) ANAND SALES PRIVATE LIMITED, (91) ANAND SALES PRIVATE LIMITED, (92) ANAND SALES PRIVATE LIMITED, (93) ANAND SALES PRIVATE LIMITED, (94) ANAND SALES PRIVATE LIMITED, (95) ANAND SALES PRIVATE LIMITED, (96) ANAND SALES PRIVATE LIMITED, (97) ANAND SALES PRIVATE LIMITED, (98) ANAND SALES PRIVATE LIMITED, (99) ANAND SALES PRIVATE LIMITED, (100) ANAND SALES PRIVATE LIMITED

AUTHORIZED SIGNATORY SIGNATURE OF OWNERS

ALOK ROY
Enlisted Geotechnical Engineer
Rajpur-Sonarpur Municipality
Raipur-848101, Dist. Eng. Class-I

SIGNATURE OF GEO. TECHNICAL ENGINEER

PROJECT
PROPOSED G+IV STORED RESIDENTIAL BUILDINGS AT HOLDING NO. 201 DHARMATALA ROAD, R.S DAG NOS. 1399, L.R. DAG NO. 1646, KHATAN NOS. 4359-4366, 4368-4372, 4374-4382, 4386, (4359-4386), J.L. NO. 35, WARD NO. 22, MOUZA:- KODALIA, P.S. - SONARPUR, DIST-24 PGS(S) UNDER RAJPUR - SONARPUR MUNICIPALITY.

OWNER'S NAME: AGNI DELCOM PVT. LTD. & OTHERS

DRAWN - Sampra	SCALE -
DESIGNED -	DATE - 11.7.2017
CHECKED -	JOB NO -
APPROVED -	

Sanyalson Associates
Consultant Pvt. Ltd.
CONSULTANT PLANNER & STRUCTURAL ENGINEERS
P-157, KANUNDO PARK, KOLKATA-84

DWG. NO. - 5/5

Checked by
Local Office Engineer-in-charge
RAJPUR-SONARPUR MUNICIPALITY

APPROVAL OF S.A.E.

OFFICE USE ONLY
APPROVED
Plan No. 139/20/2017, Dated 21/08/2017
Valid Upto 21/08/2022

Partha Gupta
Municipal Engineer

Dr. Pallab Das
Chairman
RAJPUR-SONARPUR MUNICIPALITY