

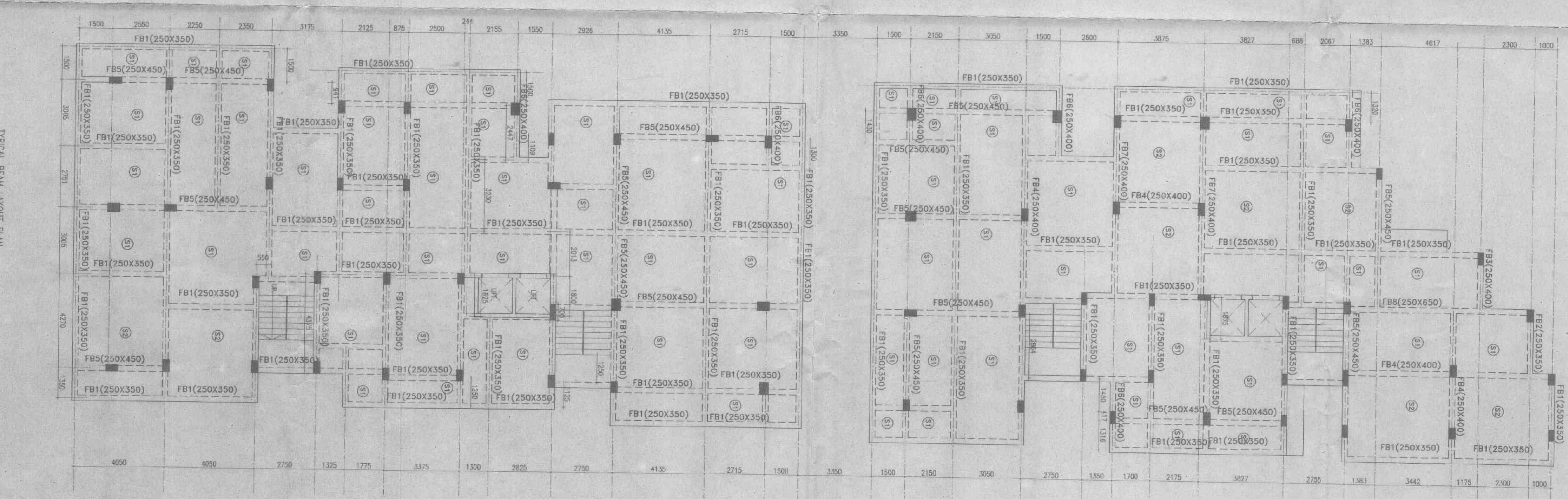
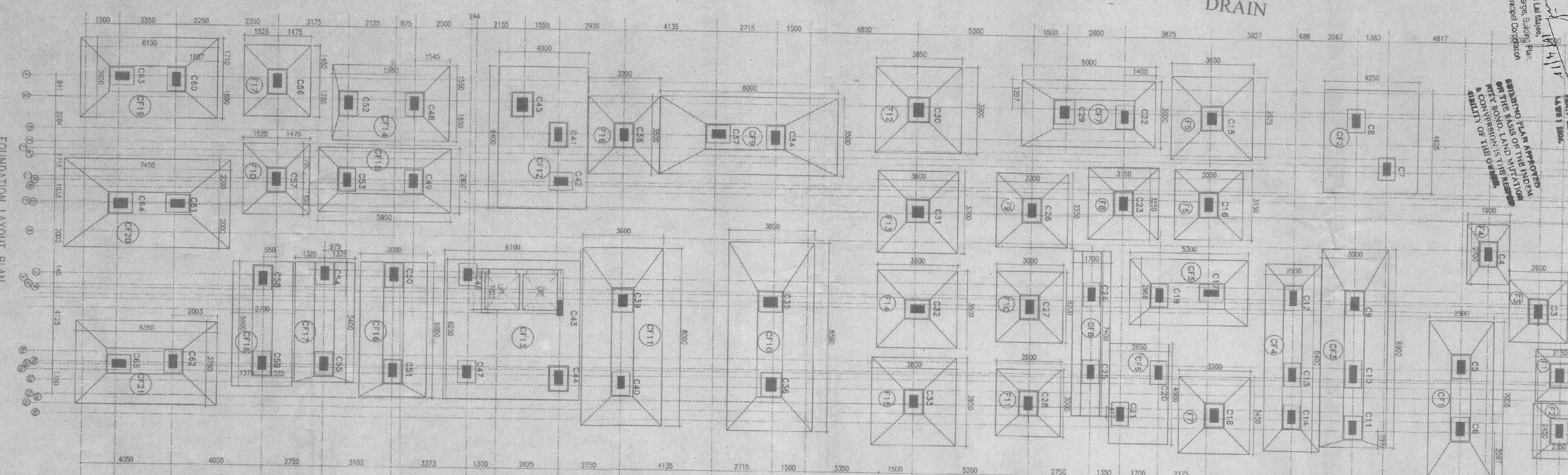
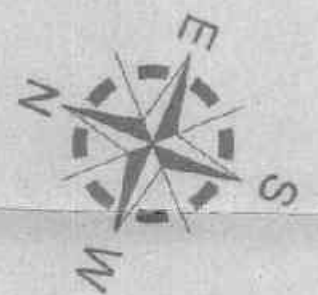


APPROVED

Approved for the purpose of this drawing only. The Engineer is not responsible for the design of the structure or the safety of the building.

MAVA S. COLLECTIVE
ARCHITECTURE/INTERIOR
2017-2018
Date: 07/11/2017

Engineer: MAVA S. COLLECTIVE
Checked by: MAVA S. COLLECTIVE



SCHEDULE OF COLUMNS' FOOTINGS

COL. MKD.	COL. SIZE	COL. REIN.	STEM SIZE	STEM REIN.	FOOTING SIZE	FOOTING REIN.	FOOTING DIR.
F1	300 X 300	4-20	300 X 300	4-20	800 X 1100	12-20	LONG DIR.
F2	300 X 300	4-20	300 X 300	4-20	800 X 1100	12-20	SHORT DIR.
F3	300 X 300	4-20	300 X 300	4-20	800 X 1100	12-20	LONG DIR.
F4	300 X 300	4-20	300 X 300	4-20	800 X 1100	12-20	SHORT DIR.
F5	300 X 300	4-20	300 X 300	4-20	800 X 1100	12-20	LONG DIR.
F6	300 X 300	4-20	300 X 300	4-20	800 X 1100	12-20	SHORT DIR.
F7	300 X 300	4-20	300 X 300	4-20	800 X 1100	12-20	LONG DIR.
F8	300 X 300	4-20	300 X 300	4-20	800 X 1100	12-20	SHORT DIR.
F9	300 X 300	4-20	300 X 300	4-20	800 X 1100	12-20	LONG DIR.
F10	300 X 300	4-20	300 X 300	4-20	800 X 1100	12-20	SHORT DIR.
F11	300 X 300	4-20	300 X 300	4-20	800 X 1100	12-20	LONG DIR.
F12	300 X 300	4-20	300 X 300	4-20	800 X 1100	12-20	SHORT DIR.
F13	300 X 300	4-20	300 X 300	4-20	800 X 1100	12-20	LONG DIR.
F14	300 X 300	4-20	300 X 300	4-20	800 X 1100	12-20	SHORT DIR.
F15	300 X 300	4-20	300 X 300	4-20	800 X 1100	12-20	LONG DIR.
F16	300 X 300	4-20	300 X 300	4-20	800 X 1100	12-20	SHORT DIR.
F17	300 X 300	4-20	300 X 300	4-20	800 X 1100	12-20	LONG DIR.
F18	300 X 300	4-20	300 X 300	4-20	800 X 1100	12-20	SHORT DIR.
F19	300 X 300	4-20	300 X 300	4-20	800 X 1100	12-20	LONG DIR.

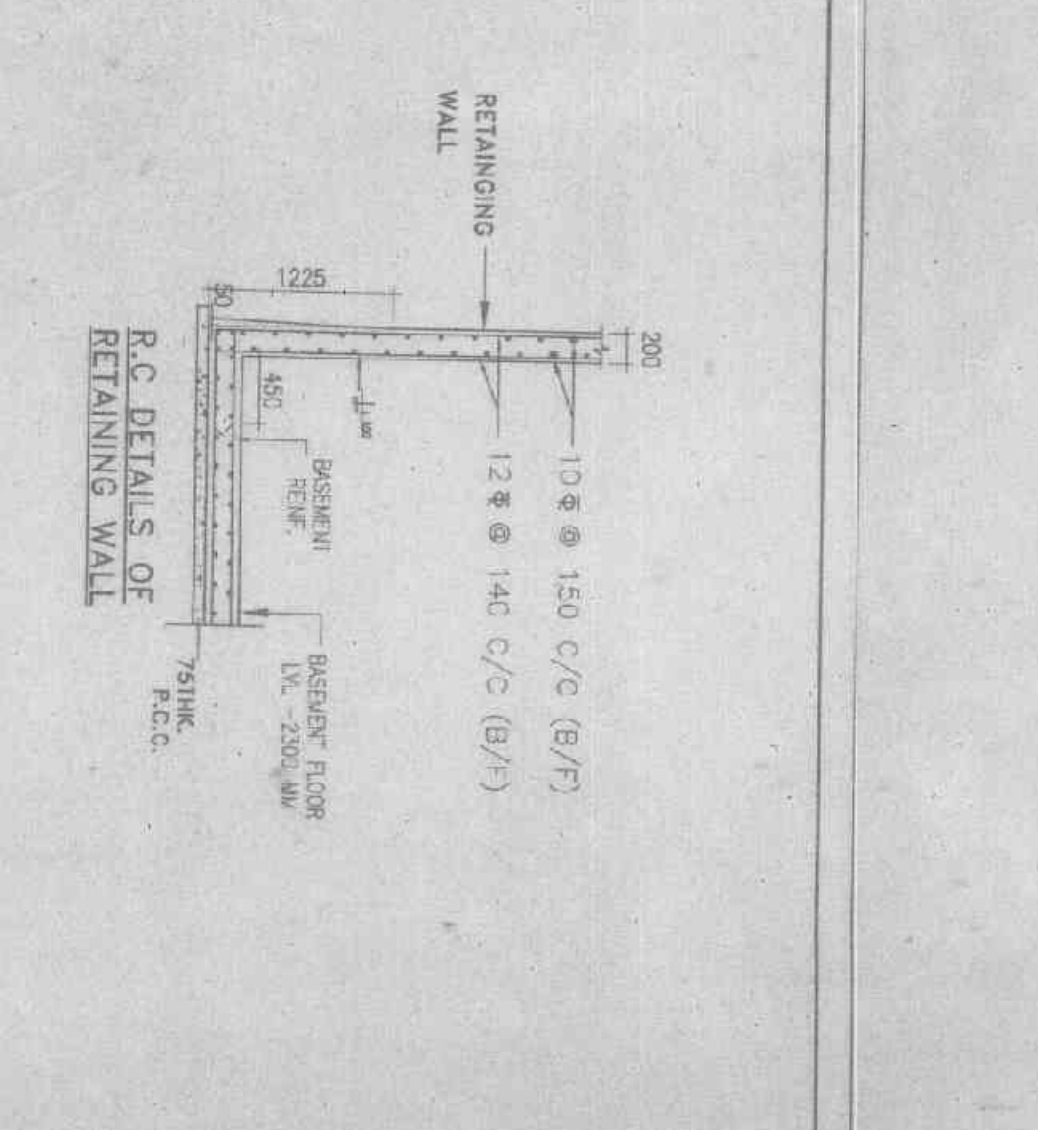
SCHEDULE OF FLOOR BEAMS

BEAM MKD.	BEAM SIZE	INT. SUPP.	END SUPP.	INT. SPAN	END SPAN	SIDE REIN.	STIRRUPS
F1	250 X 350	2-18	2-20	2-18	2-20	2-18	S1
F2	250 X 350	2-18	2-20	2-18	2-20	2-18	S2
F3	250 X 350	2-18	2-20	2-18	2-20	2-18	S1
F4	250 X 350	2-18	2-20	2-18	2-20	2-18	S2
F5	250 X 350	2-18	2-20	2-18	2-20	2-18	S1
F6	250 X 350	2-18	2-20	2-18	2-20	2-18	S2
F7	250 X 350	2-18	2-20	2-18	2-20	2-18	S1
F8	250 X 350	2-18	2-20	2-18	2-20	2-18	S2
F9	250 X 350	2-18	2-20	2-18	2-20	2-18	S1
F10	250 X 350	2-18	2-20	2-18	2-20	2-18	S2
F11	250 X 350	2-18	2-20	2-18	2-20	2-18	S1
F12	250 X 350	2-18	2-20	2-18	2-20	2-18	S2
F13	250 X 350	2-18	2-20	2-18	2-20	2-18	S1
F14	250 X 350	2-18	2-20	2-18	2-20	2-18	S2
F15	250 X 350	2-18	2-20	2-18	2-20	2-18	S1
F16	250 X 350	2-18	2-20	2-18	2-20	2-18	S2
F17	250 X 350	2-18	2-20	2-18	2-20	2-18	S1
F18	250 X 350	2-18	2-20	2-18	2-20	2-18	S2
F19	250 X 350	2-18	2-20	2-18	2-20	2-18	S1

SCHEDULE OF SLABS

SLAB	THK.	ALONG SHORTER DIRECTION	ALONG LONGER DIRECTION	DIST. REIN.
S1	110	2-18	2-20	2-18
S2	125	2-18	2-20	2-18

NOTE
AT CONTINUOUS SUPPORTS, DIFFERENT MARKS PROVIDE BETWEEN THE TWO MARKED SLABS.



- NOTES**
1. ALL DIMENSIONS ARE IN MM & LEVELS ARE IN M UNLESS OTHERWISE NOTED.
 2. THE GRADE OF CONCRETE SHALL BE M-20 CONFORMING TO IS-456.
 3. ALL REINFORCEMENT SHALL BE 10mm & 12mm.
 4. ALL REINFORCEMENT SHALL BE AS PER IS-1786.
 5. UNLESS OTHERWISE SPECIFIED, THE MINIMUM CLEAR COVER TO MAIN REINFORCEMENT SHALL BE AS FOLLOWS:
- | ITEM | COVER |
|---------------|-------|
| 1. BEAMS | 20 |
| 2. SLABS | 15 |
| 3. COLUMNS | 25 |
| 4. FOUNDATION | 50 |

PROPOSED STRUCTURAL DRAWING OF B-G-5+1 (ONE EXTRA FLOOR) STORED APARTMENT BUILDING (BLOCK-2) OF M/S KIRTI SAI NATH CONSTRUCTION PVT. LTD., OVER R.S. PLOT NO. - 346, KHATAN NO. - 1958 & 1111, LR PLOT - 4(PART), OF MOUZA - MADHA, JL. NO. - 92, P.S. - COCKDEN, DIST. - BURDWAN.

* HOLDING NO. - 123/N
* ID NO. - 68784
* CIRCLE/WARD NO. - D/29
* STREET NAME - J.P. AVENUE, DGP-11

SIGNATURE OF STRUCTURAL ENGINEER
[Signature]

SIGNATURE OF I.B.S./ENGINEER/ARCHITECT
[Signature]

REV. NO. - 27.04.17
DATE - 01/01/2014