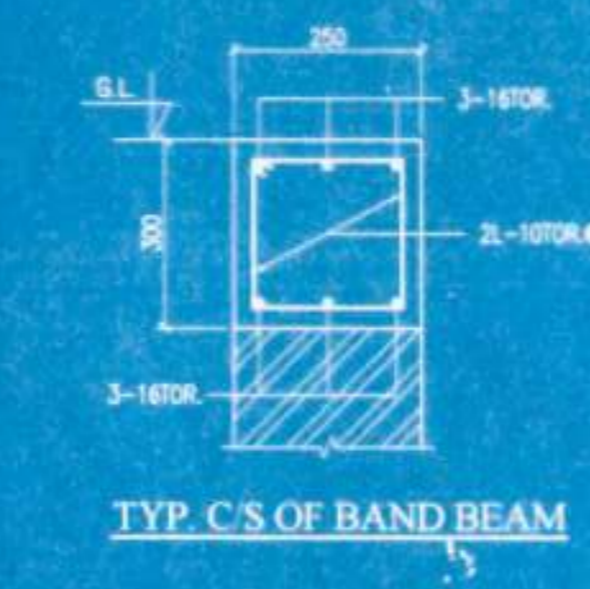
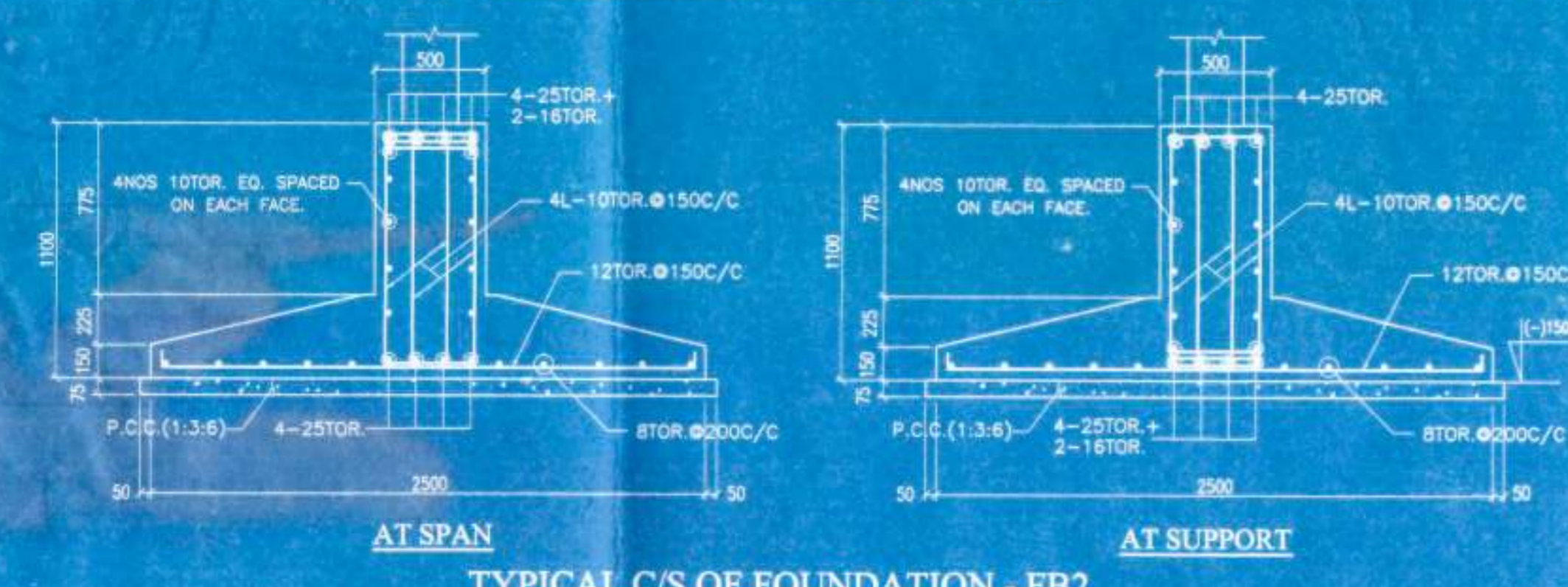
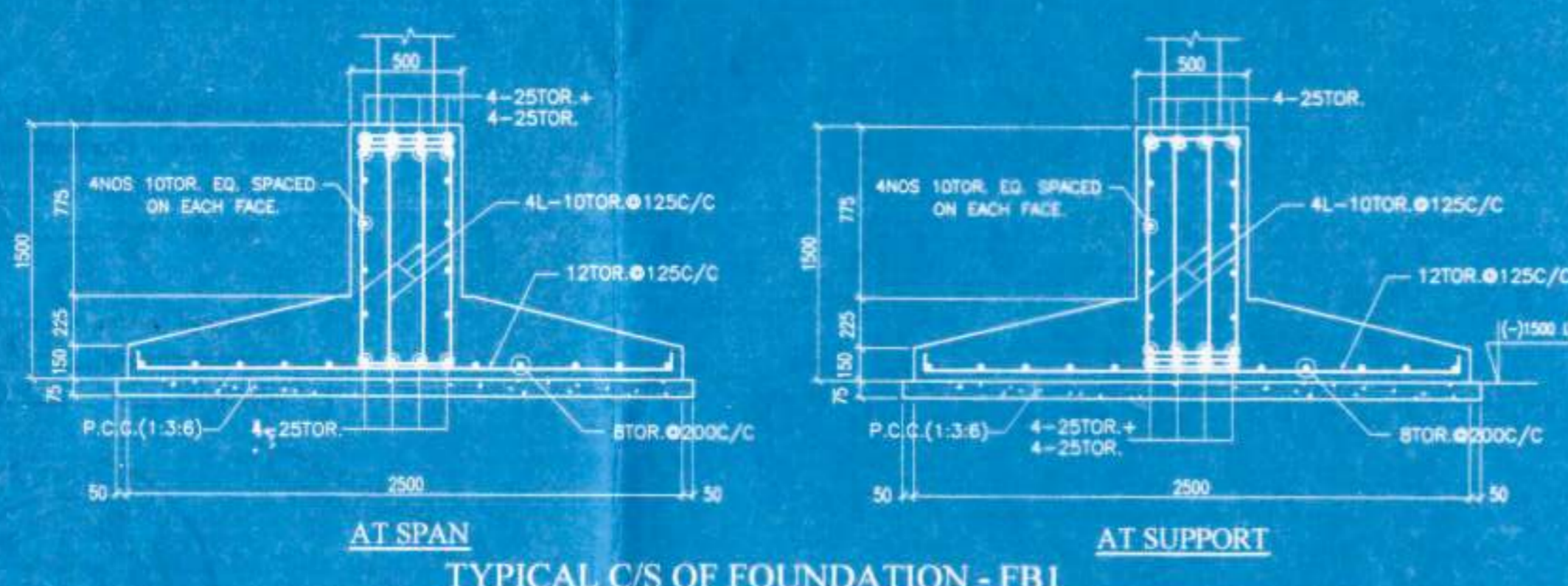
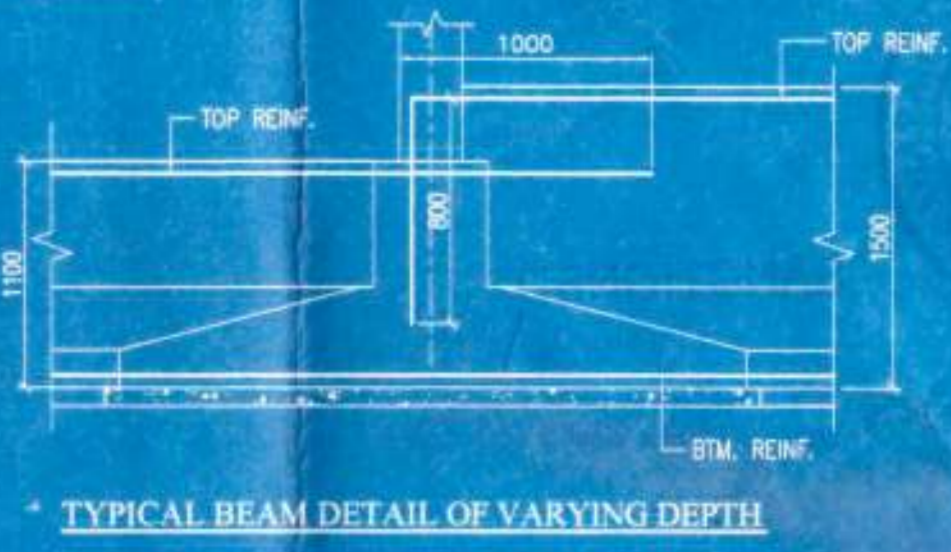


SCHEDULE OF SLABS

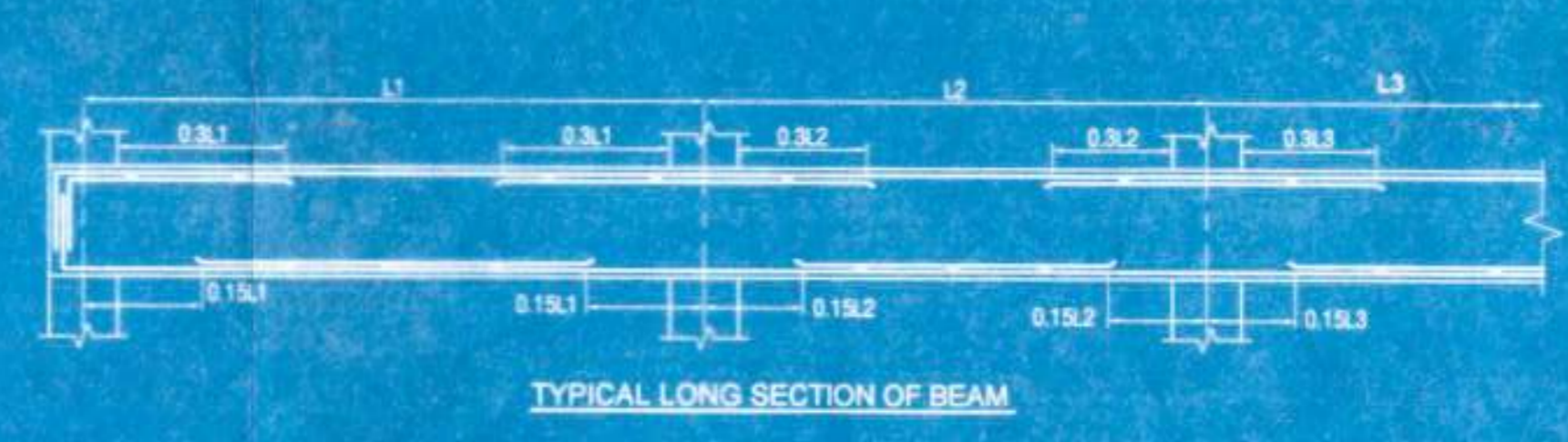
PANEL MKD.	THICKNESS (MM)	SHORTER DIRECTION		LONGER DIRECTION	
		TOP OVER SUPPORT	BOTTOM AT SPAN	TOP OVER SUPPORT	BOTTOM AT SPAN
S1	150	10TOR @ 125C/C	10TOR @ 150C/C	10TOR @ 150C/C	10TOR @ 175C/C
S2	125	8TOR @ 150C/C	8TOR @ 175C/C	8TOR @ 175C/C	8TOR @ 200C/C

PROVIDE DISTRIBUTION STOR. @ 200 C/C WHERE NECESSARY



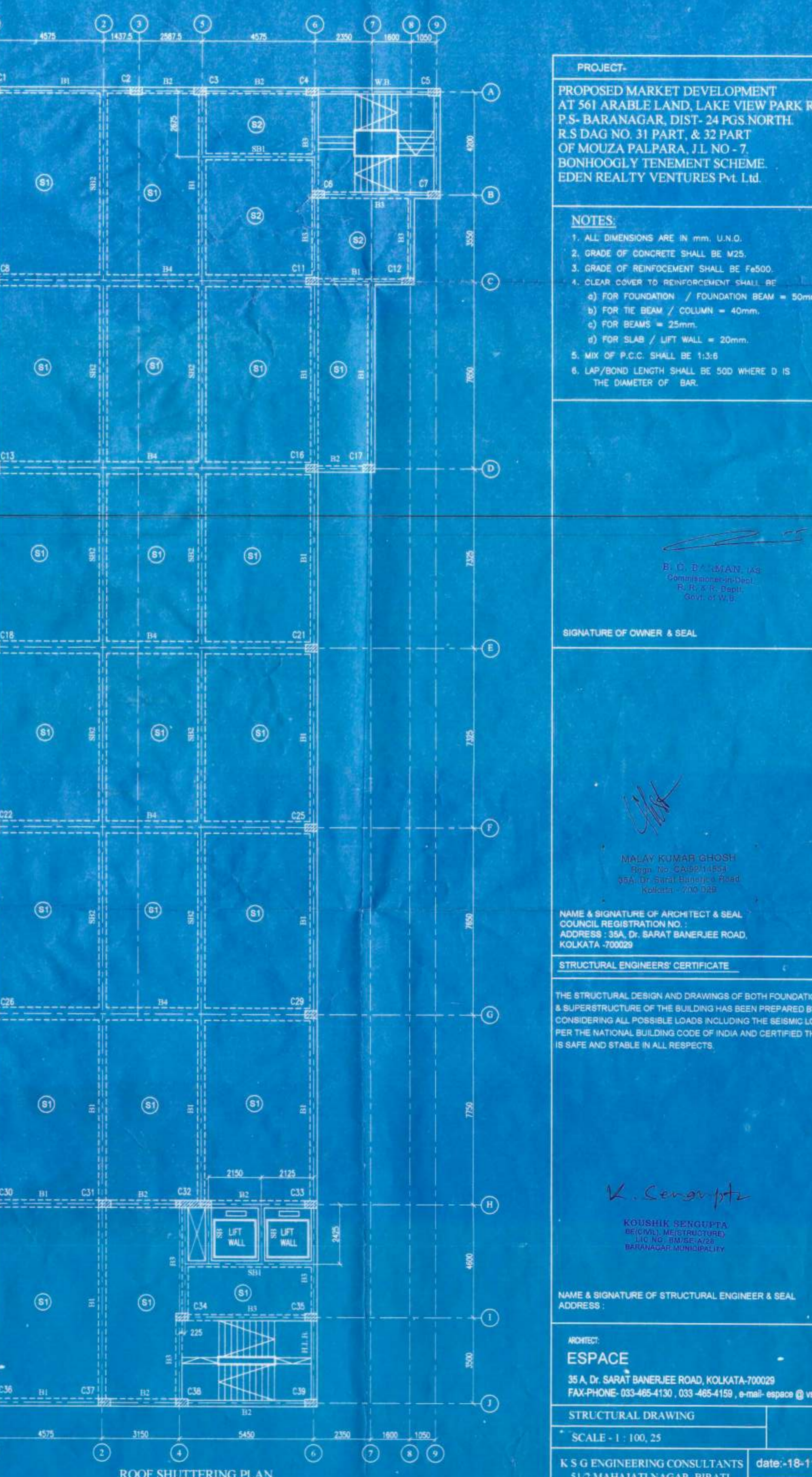
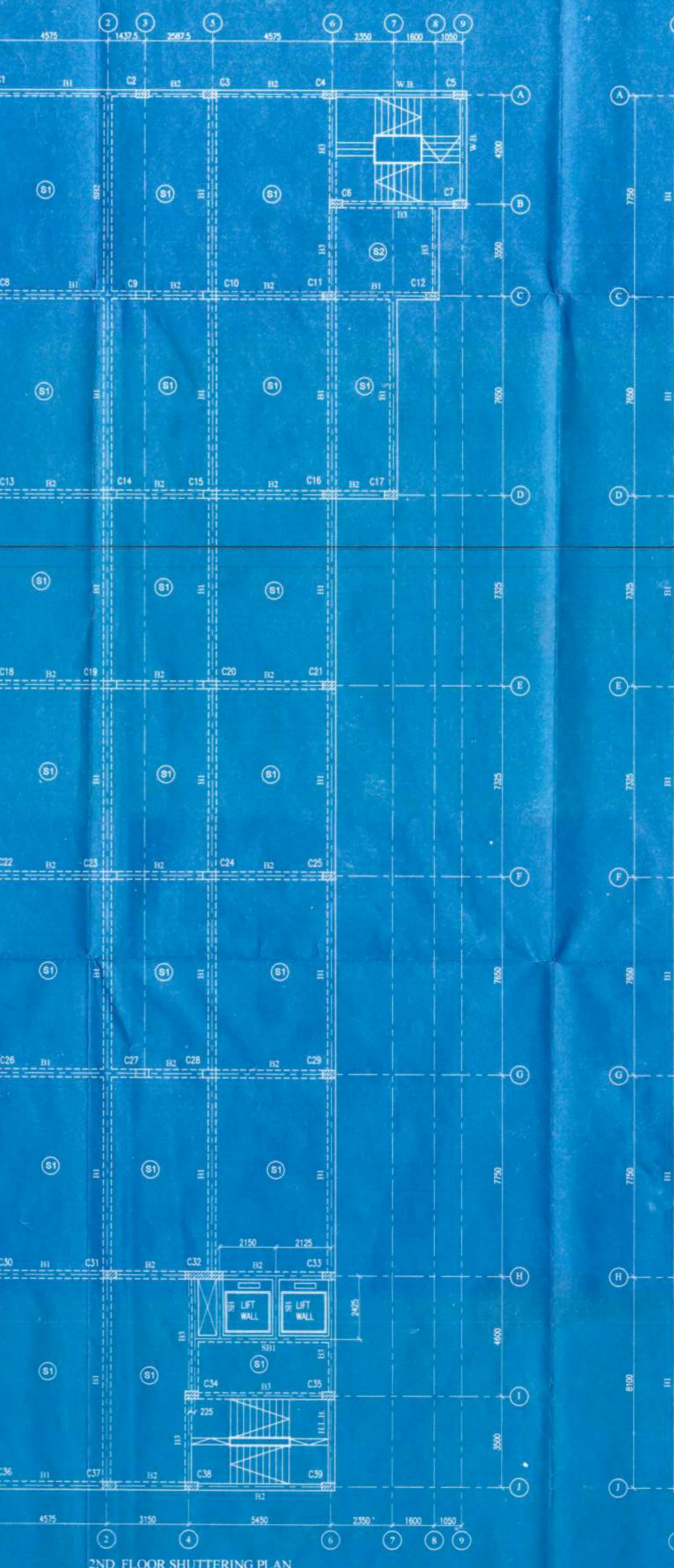
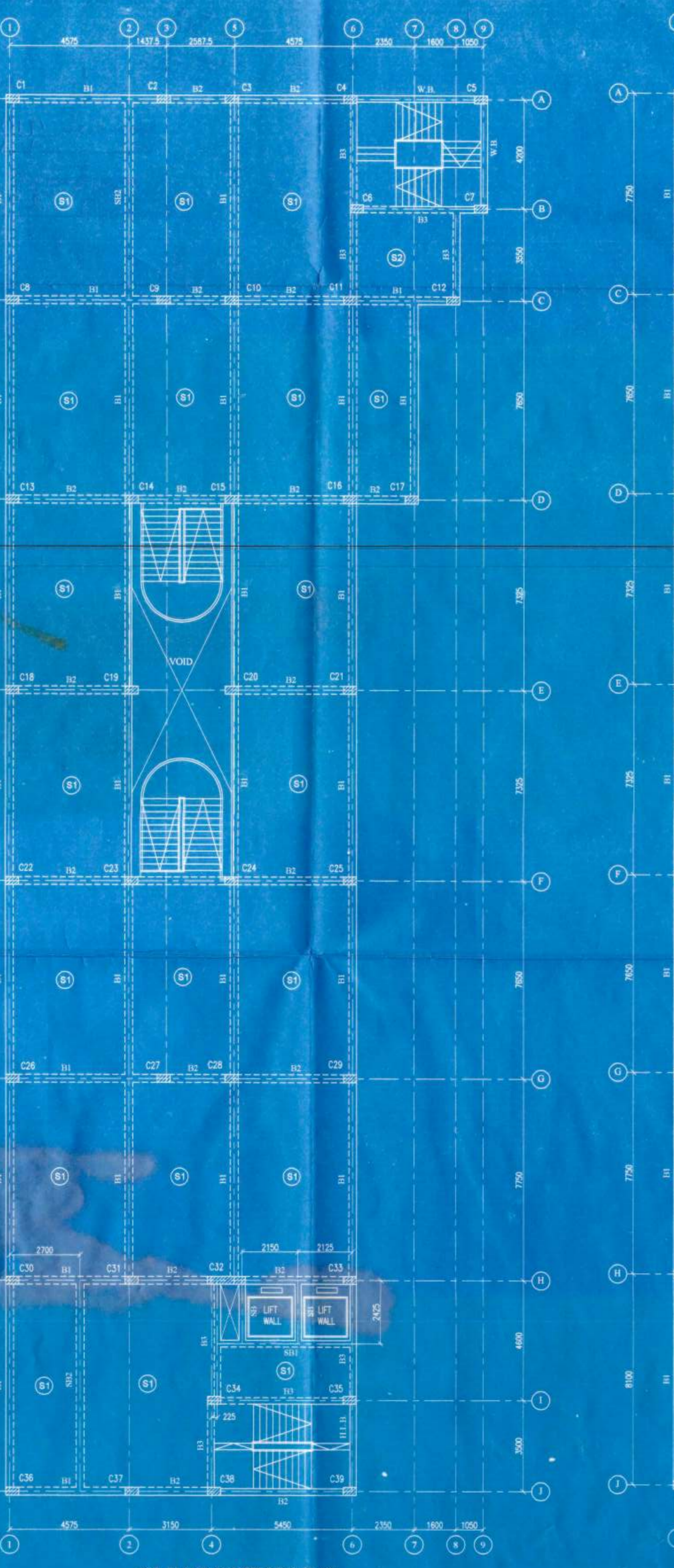
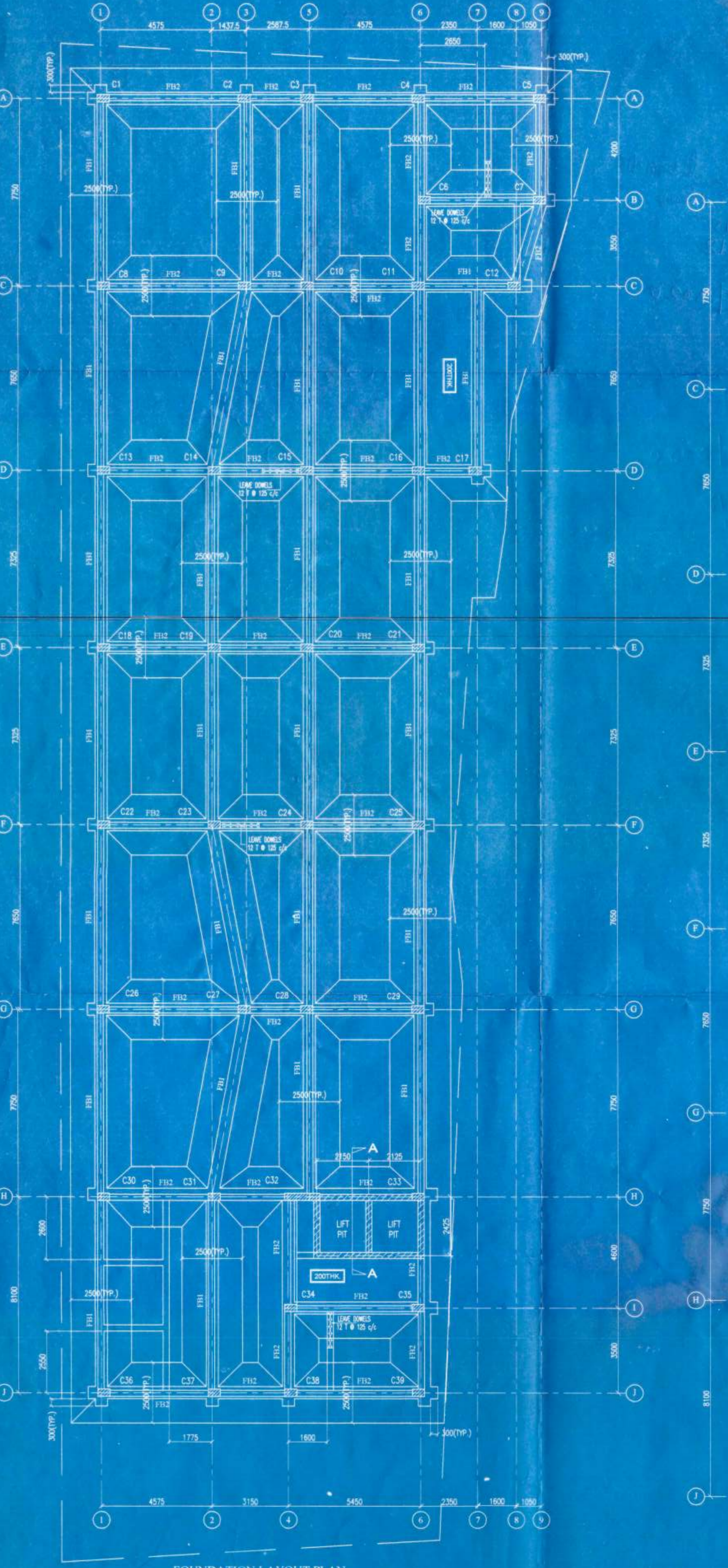
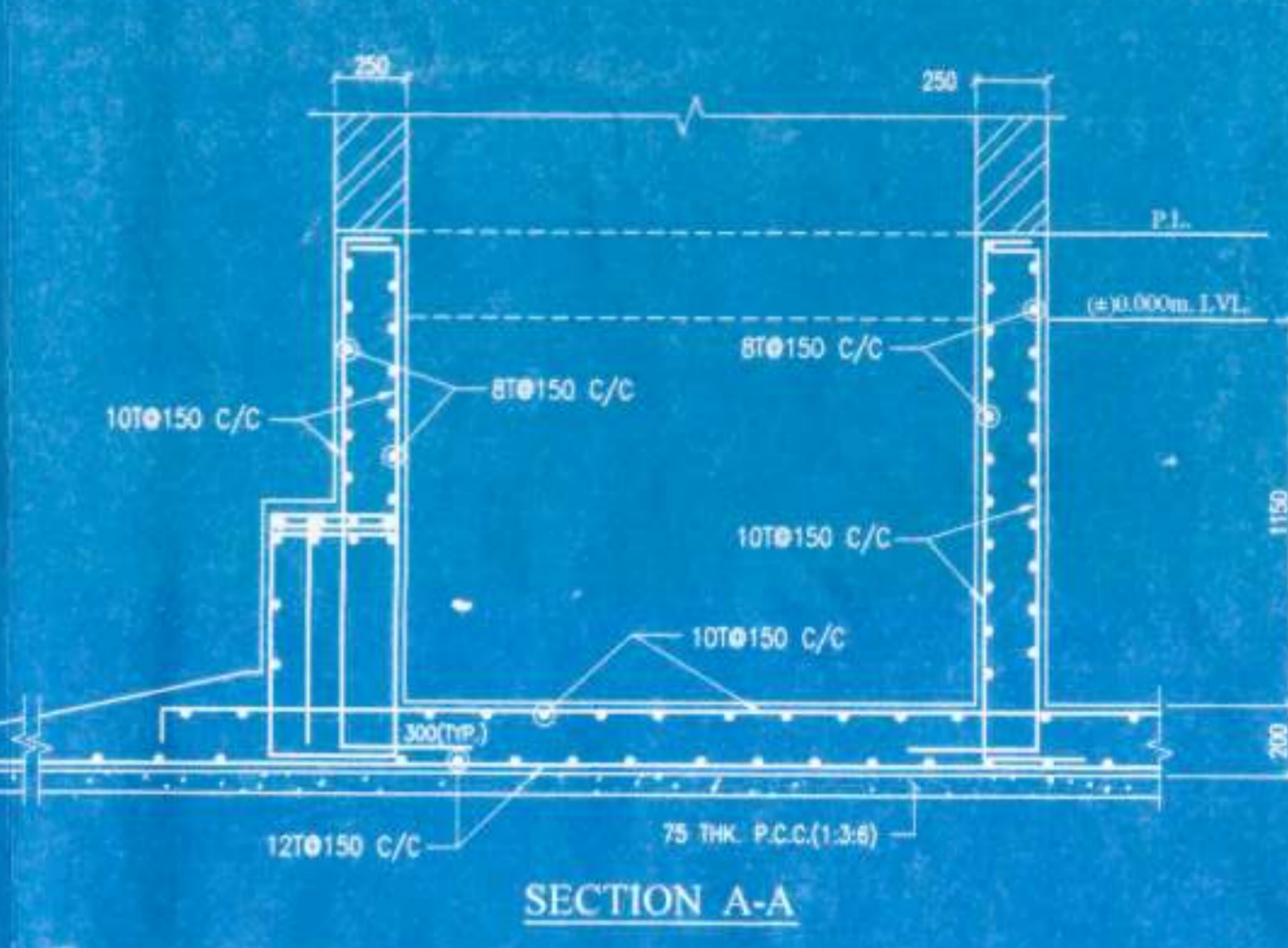
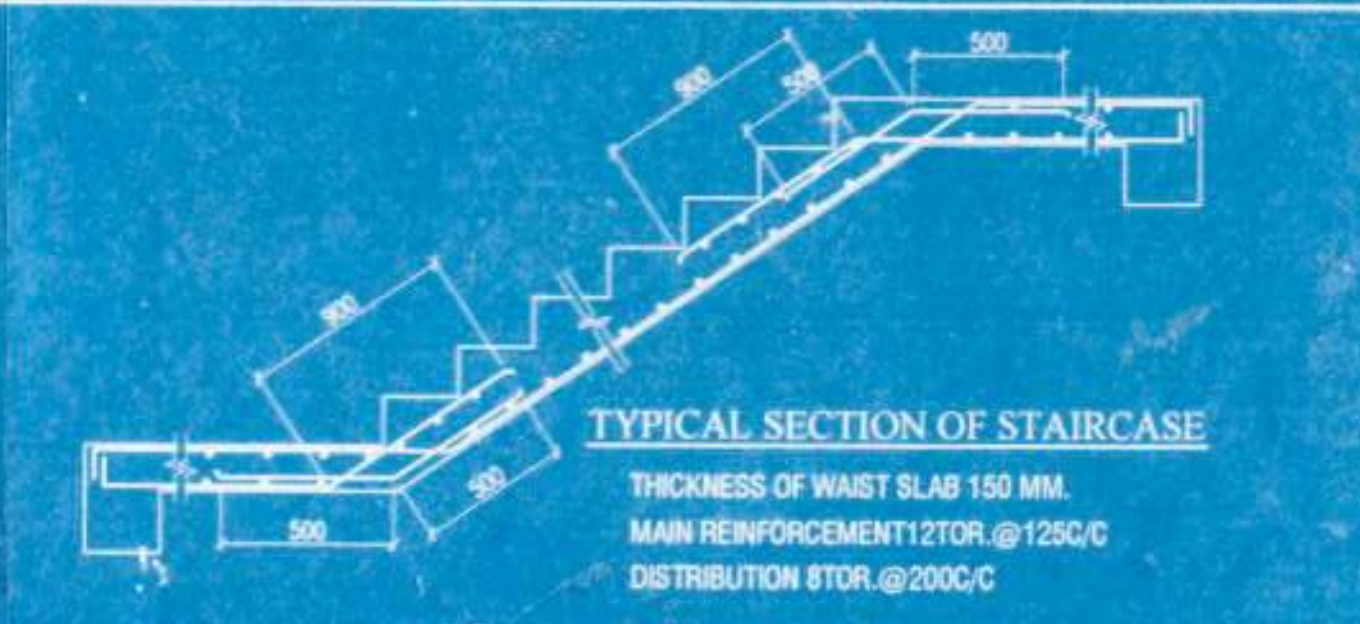
SCHEDULE OF COLUMNS

COLUMN MKD.	SIZE	MAIN REINFORCEMENT		LINK STOR. @
		FOUNDATION TO 1ST FL.	1ST FLOOR TO ROOF	
C1, C12, C17, C18	300 X 300	8 - 20T + 2 - 19T	4 - 20T + 6 - 19T	150C/C
C2, C3, C4, C5, C6, C7, C9, C10, C14, C15, C16, C21, C22, C23, C24, C25, C26, C27, C28	300 X 300	8 - 20T + 2 - 20T	4 - 20T + 6 - 20T	150C/C
C8, C11, C13, C19, C20, C29, C30, C31, C32, C33, C34, C35, C36, C37, C38	300 X 300	8 - 20T + 4 - 20T	4 - 20T + 6 - 20T	150C/C
C9, C10, C14, C15, C16, C20, C22, C24, C27, C28	300 X 300	4 - 20T + 6 - 20T	4 - 20T + 6 - 20T	150C/C
C32	300 X 1450	12 - 20T + 19 - 19T	8 - 20T + 14 - 19T	150C/C



SCHEDULE OF BEAMS

BEAM MKD.	SIZE	AT SUPPORT		AT SPAN		STAIRS	
		TOP	BOTTOM	TOP	BOTTOM	SUPPORT	SPAN
B1	300 X 600	3-20TOR + 3-20TOR	3-20TOR + 3-20TOR	3-20TOR + 3-20TOR	3-20TOR + 3-20TOR	2L-10TOR @ 100C/C	2L-10TOR @ 100C/C
B2	300 X 600	3-16TOR + 3-16TOR	3-16TOR + 3-16TOR	3-16TOR + 3-16TOR	3-16TOR + 3-16TOR	2L-10TOR @ 100C/C	2L-10TOR @ 100C/C
B3	250 X 600	3-16TOR + 3-16TOR	3-16TOR + 3-16TOR	3-16TOR + 3-16TOR	3-16TOR + 3-16TOR	2L-10TOR @ 100C/C	2L-10TOR @ 100C/C
B4	500 X 600	5-20TOR + 5-20TOR	5-20TOR + 5-20TOR	5-20TOR + 5-20TOR	5-20TOR + 5-20TOR	4L-10TOR @ 100C/C	4L-10TOR @ 100C/C
B5	250 X 450	3-16TOR + 3-16TOR	3-16TOR + 3-16TOR	3-16TOR + 3-16TOR	3-16TOR + 3-16TOR	2L-8TOR @ 125C/C	2L-8TOR @ 175C/C
B6	250 X 450	3-16TOR + 3-16TOR	3-16TOR + 3-16TOR	3-20TOR + 3-20TOR	3-20TOR + 3-20TOR	2L-8TOR @ 125C/C	2L-8TOR @ 175C/C
B7	300 X 600	3-20TOR + 3-20TOR	3-20TOR + 3-20TOR	3-20TOR + 3-20TOR	3-20TOR + 3-20TOR	2L-10TOR @ 100C/C	2L-10TOR @ 100C/C
B8	300 X 600	3-20TOR + 3-20TOR	3-20TOR + 3-20TOR	3-20TOR + 3-20TOR	3-20TOR + 3-20TOR	2L-10TOR @ 100C/C	2L-10TOR @ 100C/C
B9	250 X 500	3-20TOR + 3-20TOR	3-20TOR + 3-20TOR	3-20TOR + 3-20TOR	3-20TOR + 3-20TOR	2L-8TOR @ 125C/C	2L-8TOR @ 150C/C
B10	250 X 500	3-20TOR + 3-20TOR	3-20TOR + 3-20TOR	3-20TOR + 3-20TOR	3-20TOR + 3-20TOR	2L-8TOR @ 125C/C	2L-8TOR @ 150C/C
B11	250 X 500	3-20TOR + 3-20TOR	3-20TOR + 3-20TOR	3-20TOR + 3-20TOR	3-20TOR + 3-20TOR	2L-8TOR @ 125C/C	2L-8TOR @ 150C/C
B12	250 X 500	3-20TOR + 3-20TOR	3-20TOR + 3-20TOR	3-20TOR + 3-20TOR	3-20TOR + 3-20TOR	2L-8TOR @ 125C/C	2L-8TOR @ 150C/C



PROJECT:
PROPOSED MARKET DEVELOPMENT AT 561 ARABLE LAND, LAKE VIEW PARK ROAD, P.S. BARANAGAR, DIST- 24 PGS. NORTH, R.S. DAG NO. 31 PART, & 32 PART OF MOUZA PALPARA, J.L. NO-7, BONHOOGA TENEMENT SCHEME, EDEN REALTY VENTURES PVT. LMD

- NOTES:**
1. ALL DIMENSIONS ARE IN MM. U.N.O.
 2. GRADE OF CONCRETE SHALL BE M25.
 3. GRADE OF REINFORCEMENT SHALL BE F450.
 4. CLEAR COVER TO REINFORCEMENT SHALL BE:
 - a) FOR FOUNDATION / FOUNDATION BEAM = 50mm.
 - b) FOR THE BEAM / COLUMN = 40mm.
 - c) FOR BEAMS = 25mm.
 - d) FOR SLAB / LIFT WALL = 20mm.
 5. MIX OF P.C.C SHALL BE 1:3:6.
 6. LAP/BOND LENGTH SHALL BE 50D WHERE D IS THE DIAMETER OF BAR.

SIGNATURE OF OWNER & SEAL

NAME & SIGNATURE OF ARCHITECT & SEAL
COUNCIL REGISTRATION NO. _____
ADDRESS: 56A, D. SARAT BANERJEE ROAD, KOLKATA - 700029

STRUCTURAL ENGINEERS' CERTIFICATE
THE STRUCTURAL DESIGN AND DRAWINGS OF BOTH FOUNDATION & SUPERSTRUCTURE OF THE BUILDING HAS BEEN PREPARED BY ME CONSIDERING ALL POSSIBLE LOADS INCLUDING THE SEISMIC LOAD AS PER THE NATIONAL BUILDING CODE OF INDIA AND CERTIFIED THAT IT IS SAFE AND STABLE IN ALL RESPECTS.

NAME & SIGNATURE OF STRUCTURAL ENGINEER & SEAL
ADDRESS: _____

WORK:
SPACE
35 A, D. SARAT BANERJEE ROAD, KOLKATA-700029
FAX: PHONE- 033-465-4130, 033-465-4159, e-mail- espace@verif.com

STRUCTURAL DRAWING
SCALE - 1 : 100, 25

K S G ENGINEERING CONSULTANTS
51/2 MAHAJATI NAGAR, BIRATI, KOLKATA-700051

date-18-11-14
sheet-1

structural drawing

Recommended by the members of the Chairman-in-Council at their meeting held on 19.2.15
Vide item No. 6

Sanctioned by the Councilors at their meeting held on 27.2.15
Vide item No. 2(a)

Intimation should be given to the office before execution

Assistant Engineer P.W. Department Baranagar Municipality



Any deviation or alteration requires prior sanction of the Municipal Authority

SANCTIONED

Chairman Baranagar Municipality

ইউ.এ.সি. নং/সি.এ.সি. 1545/15
তারিখ 08.02.15

অনুমোদিত নম্বা

Sanctioned Valid Upto 26.02.18

No further renewal or sanction will be granted according to the provision of W.B.M. Act, 1993.

Sanctioned Renewed

Assistant Engineer P.W. Department Baranagar Municipality

Chairman Baranagar Municipality

ইউ.এ.সি. নং/সি.এ.সি. 410/15
তারিখ 29.3.18

অনুমোদিত নম্বা

Sanctioned Valid Upto 25/2/2020