



VINAYAK APARTMENT

Registered Office Address:-

168, Jodhpur Garden
Kolkata- 700045
opposite South City Mall

Call- 033 2422 7006, 9830506301, 9830873735

Project Developed by :-

S.S. Enterprise

Propitors

S.C. Halder

Site Address :-

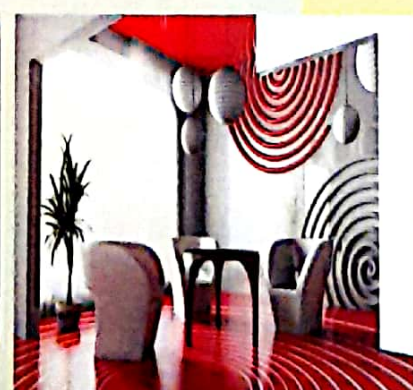
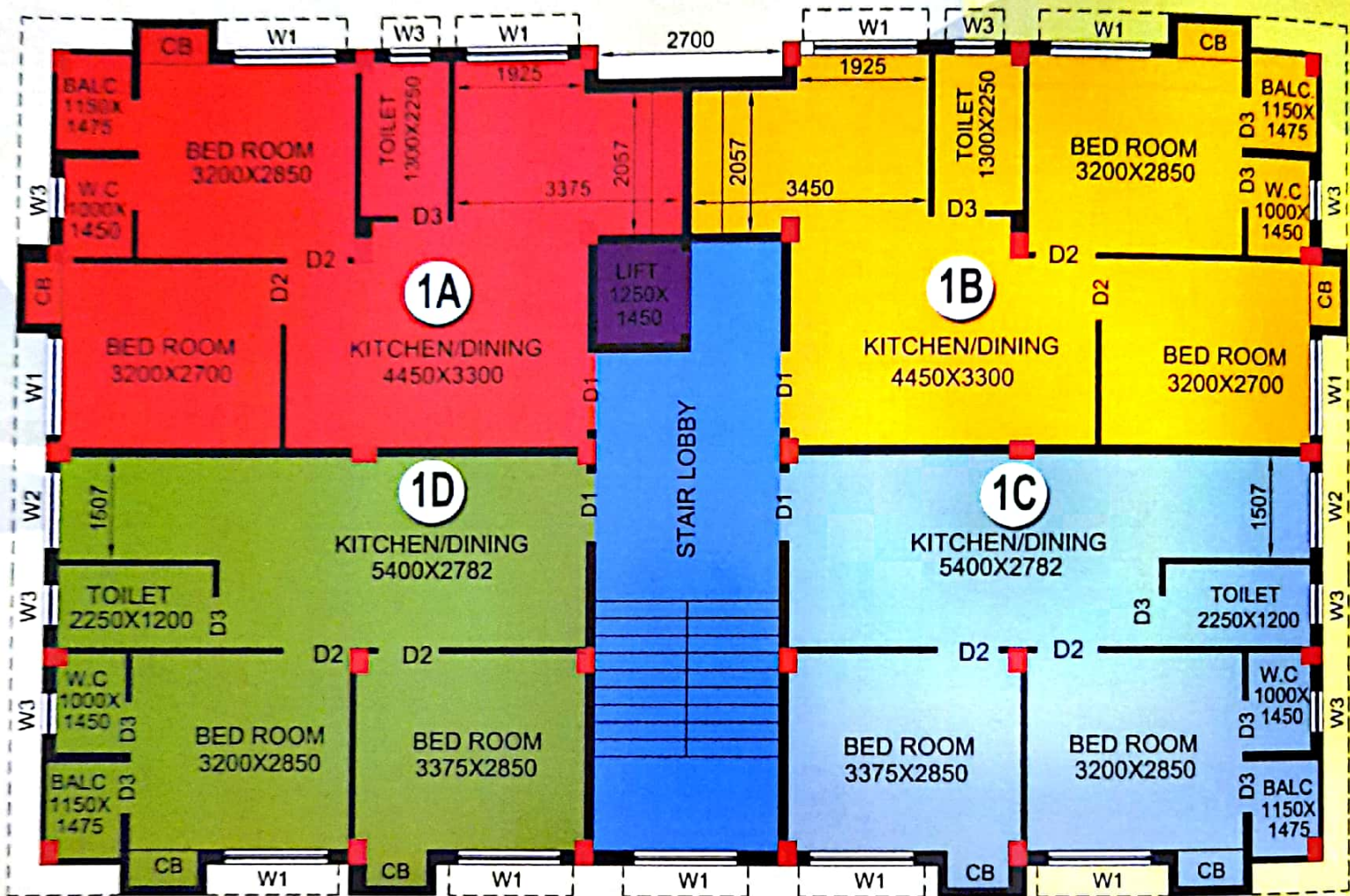
Mouza Panchpota
Ward No. 04
Holding No. 390
Rajpur Sonarpur
Municipality

BLOCK-A



Flat Mkd.	Buldup area	Super Bldup area
1A >>>>	680sqft	850sqft
1B >>>>	680sqft	850sqft
1C >>>>	670sqft	837sqft
1D >>>>	670sqft	837sqft

Typical Floor Area



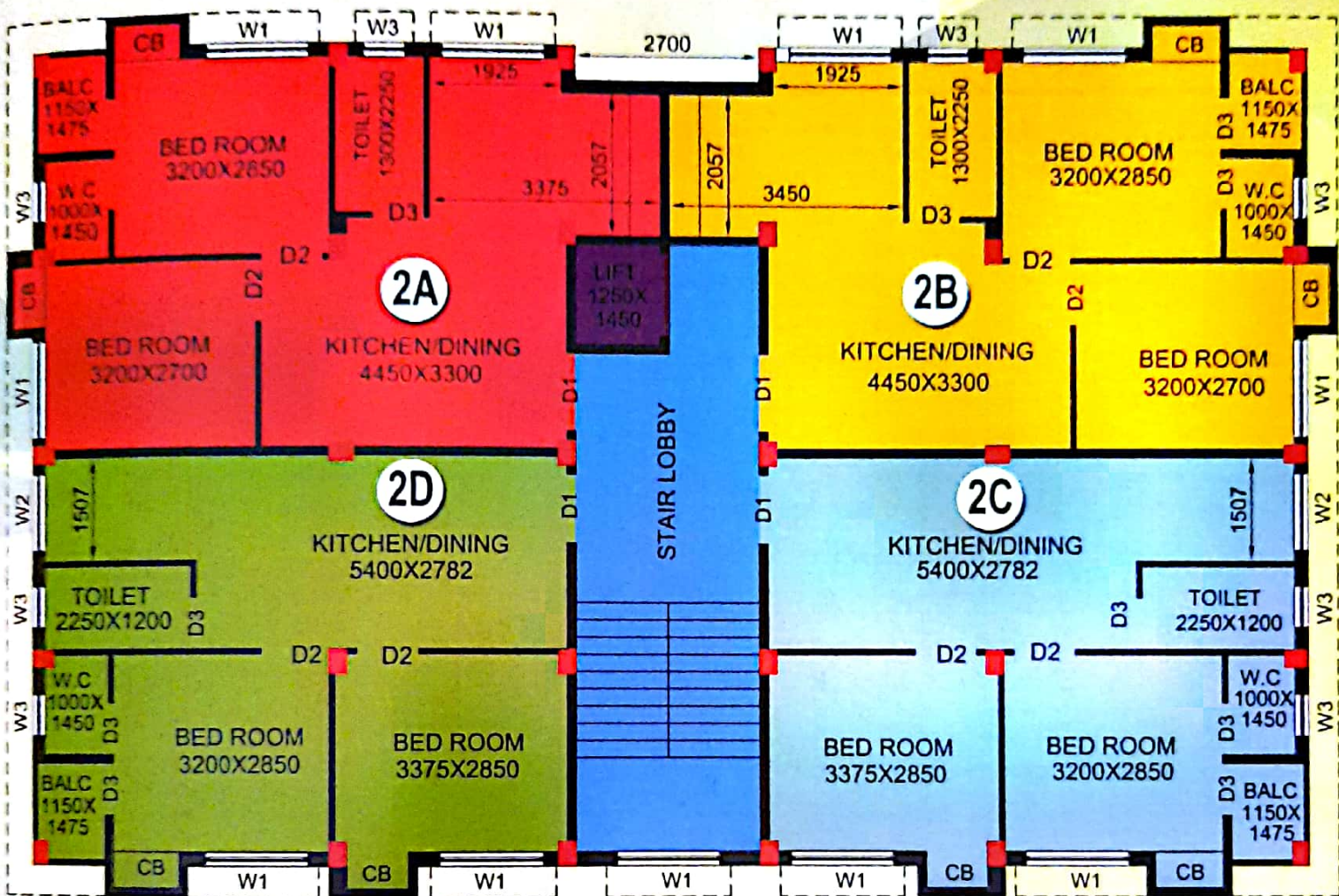
1st, 2nd, 3rd & 4th Floor Plan

BLOCK-B



Flat Mkd.	Buldup area	Super Bldup area
2A	680sqft	850sqft
2B	680sqft	850sqft
2C	670sqft	837sqft
2D	670sqft	837sqft

Typical Floor Area



1st, 2nd, 3rd & 4th Floor Plan

VINAYAK APARTMENT

Developer: Mr. Subal Chandra Halder

SPECIFICATION

- Structure** : RCC- framed structure as per plan, cement used Lafarge, Ultratech, Konarok Dalmia .
- Brickwork** : Eco friendly Bricks, Premium quality 1st class clay bricks.
- Elevation** : Modern elevation, conforming to contemporary design.
- External Finish** : Paint by certified Asian Paints / Berger applicator and other effects as applicable.
- Door & Windows** : Quality wood frames with solid core flush door, Main door premium stainlesssteel Handle, eye hole & Lock Premium quality. Windows anodized / powder coated aluminium Sliding with glass.
- Flooring** : Vitrified tiles in bedrooms / Living / Dining / Kitchen. Black Stone Counter In kitchen stainless steel sink. Wall tiles up to 2feet height above counter.
- Toilets** : Premium Ceramic tiles in toilets. Hot & Cold water line provision with CPVC pipes. CP fittings Including Cera / Hindware.
- Elevator** : Passenger Lift as per company choice.
- Electricals** : Concealed Copper wiring with ISI marked Ware switches of Anchor / Roma / Pritam.
- TV points in master bedroom and living room
 - two light points, one fan point, two 5A points in all bedroom.
 - One 15A geyser point in one toilets.
 - One 15A, 5A points and one 5A refrigerator point and exhaust fan points in kitchen.
 - One AC point in Master Bedroom.
 - One Washing machine point in balcony.
 - MCBs and changeovers.
- Water Supply** : Underground and overhead storage tanks of suitable capacity. Suitable electric pump will be installed at ground floor to deliver water to overhead reservoir from underground reservoir.
- Extra Development Charges** :
Transformer / W.B.S.E. / C.E.S.C common meter / installation Charges as per actual
GENERATOR AS PER ACTUAL.