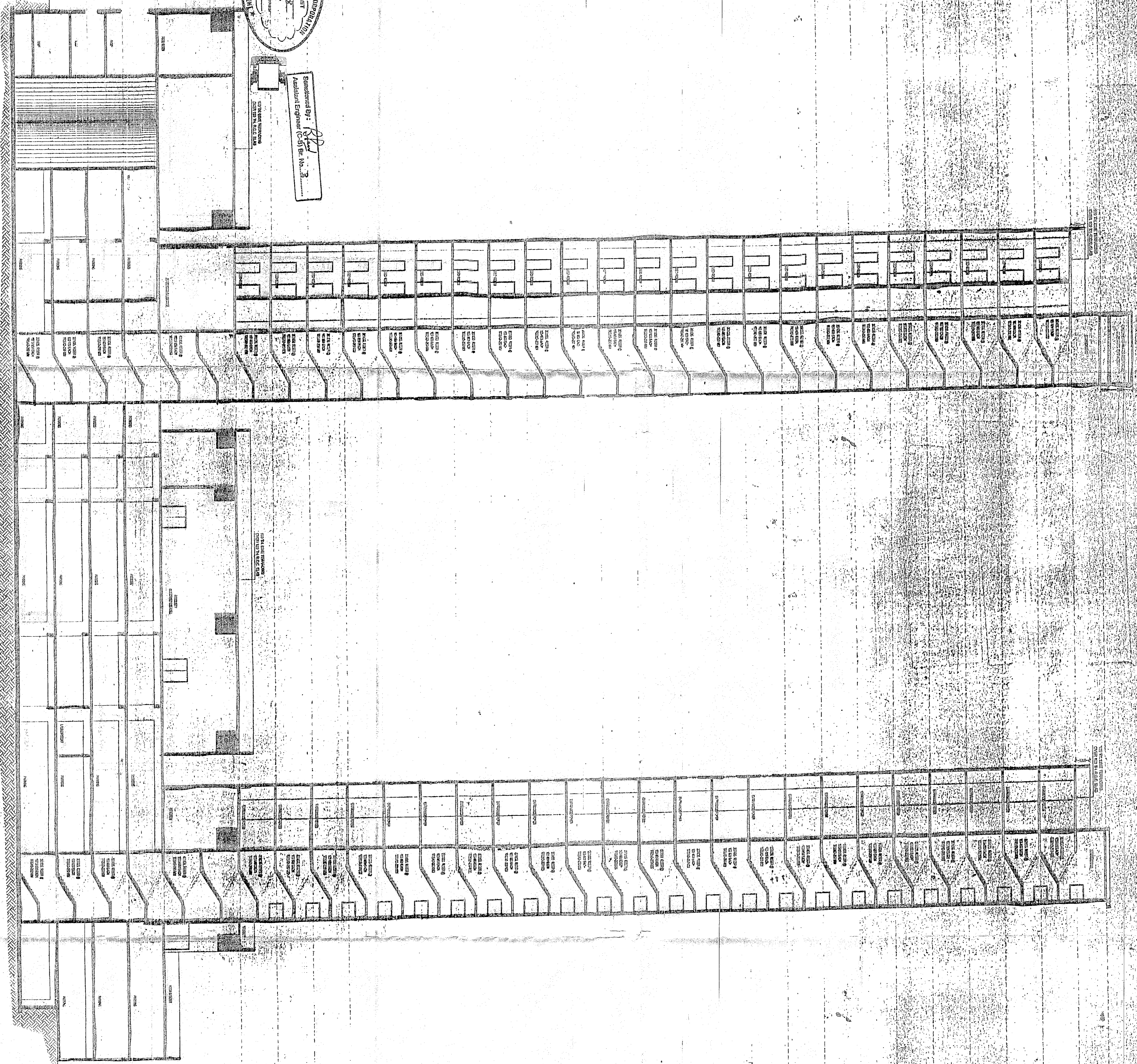


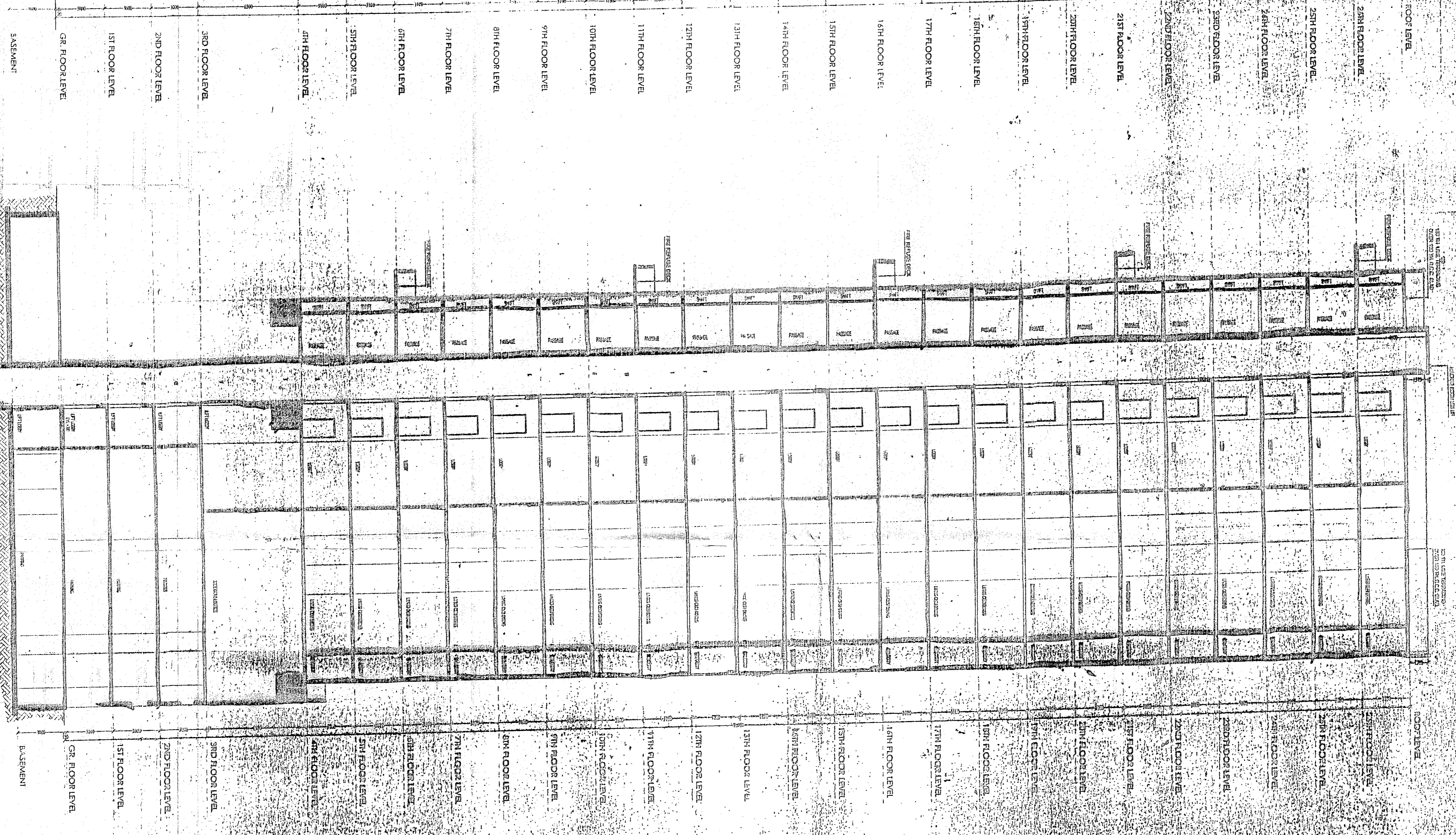


Prepared by: *[Signature]*  
Assistant Engineer, City Branch - 3  
Date: 10/10/2024



SECTION A  
SCALE: 1/30

SECTION B  
SCALE: 1/30



NO.	DESCRIPTION	UNIT	QTY	RATE	AMOUNT
1	CEMENT CONCRETE	M <sup>3</sup>	100	1000	100000
2	STEEL STRUCTURE	TONS	50	20000	1000000
3	BRICKWORK	M <sup>3</sup>	200	500	100000
4	PLASTER	M <sup>2</sup>	500	200	100000
5	PAINT	LITERS	1000	100	100000
6	LABOUR	MAN-DAYS	10000	100	1000000
7	WATER SUPPLY	M <sup>3</sup>	100	1000	100000
8	ELECTRICAL	M <sup>2</sup>	500	200	100000
9	MECHANICAL	M <sup>2</sup>	500	200	100000
10	FOUNDATION	M <sup>3</sup>	100	1000	100000
11	ROOFING	M <sup>2</sup>	500	200	100000
12	GLASS	M <sup>2</sup>	500	200	100000
13	DOORS	NO.	100	1000	100000
14	WINDOWS	NO.	200	500	100000
15	CEILING	M <sup>2</sup>	500	200	100000
16	FLOORING	M <sup>2</sup>	500	200	100000
17	WALLS	M <sup>2</sup>	500	200	100000
18	ROOF	M <sup>2</sup>	500	200	100000
19	FOUNDATION	M <sup>3</sup>	100	1000	100000
20	ROOFING	M <sup>2</sup>	500	200	100000
21	GLASS	M <sup>2</sup>	500	200	100000
22	DOORS	NO.	100	1000	100000
23	WINDOWS	NO.	200	500	100000
24	CEILING	M <sup>2</sup>	500	200	100000
25	FLOORING	M <sup>2</sup>	500	200	100000
26	WALLS	M <sup>2</sup>	500	200	100000
27	ROOF	M <sup>2</sup>	500	200	100000
28	FOUNDATION	M <sup>3</sup>	100	1000	100000
29	ROOFING	M <sup>2</sup>	500	200	100000
30	GLASS	M <sup>2</sup>	500	200	100000
31	DOORS	NO.	100	1000	100000
32	WINDOWS	NO.	200	500	100000
33	CEILING	M <sup>2</sup>	500	200	100000
34	FLOORING	M <sup>2</sup>	500	200	100000
35	WALLS	M <sup>2</sup>	500	200	100000
36	ROOF	M <sup>2</sup>	500	200	100000
37	FOUNDATION	M <sup>3</sup>	100	1000	100000
38	ROOFING	M <sup>2</sup>	500	200	100000
39	GLASS	M <sup>2</sup>	500	200	100000
40	DOORS	NO.	100	1000	100000
41	WINDOWS	NO.	200	500	100000
42	CEILING	M <sup>2</sup>	500	200	100000
43	FLOORING	M <sup>2</sup>	500	200	100000
44	WALLS	M <sup>2</sup>	500	200	100000
45	ROOF	M <sup>2</sup>	500	200	100000
46	FOUNDATION	M <sup>3</sup>	100	1000	100000
47	ROOFING	M <sup>2</sup>	500	200	100000
48	GLASS	M <sup>2</sup>	500	200	100000
49	DOORS	NO.	100	1000	100000
50	WINDOWS	NO.	200	500	100000
51	CEILING	M <sup>2</sup>	500	200	100000
52	FLOORING	M <sup>2</sup>	500	200	100000
53	WALLS	M <sup>2</sup>	500	200	100000
54	ROOF	M <sup>2</sup>	500	200	100000
55	FOUNDATION	M <sup>3</sup>	100	1000	100000
56	ROOFING	M <sup>2</sup>	500	200	100000
57	GLASS	M <sup>2</sup>	500	200	100000
58	DOORS	NO.	100	1000	100000
59	WINDOWS	NO.	200	500	100000
60	CEILING	M <sup>2</sup>	500	200	100000
61	FLOORING	M <sup>2</sup>	500	200	100000
62	WALLS	M <sup>2</sup>	500	200	100000
63	ROOF	M <sup>2</sup>	500	200	100000
64	FOUNDATION	M <sup>3</sup>	100	1000	100000
65	ROOFING	M <sup>2</sup>	500	200	100000
66	GLASS	M <sup>2</sup>	500	200	100000
67	DOORS	NO.	100	1000	100000
68	WINDOWS	NO.	200	500	100000
69	CEILING	M <sup>2</sup>	500	200	100000
70	FLOORING	M <sup>2</sup>	500	200	100000
71	WALLS	M <sup>2</sup>	500	200	100000
72	ROOF	M <sup>2</sup>	500	200	100000
73	FOUNDATION	M <sup>3</sup>	100	1000	100000
74	ROOFING	M <sup>2</sup>	500	200	100000
75	GLASS	M <sup>2</sup>	500	200	100000
76	DOORS	NO.	100	1000	100000
77	WINDOWS	NO.	200	500	100000
78	CEILING	M <sup>2</sup>	500	200	100000
79	FLOORING	M <sup>2</sup>	500	200	100000
80	WALLS	M <sup>2</sup>	500	200	100000
81	ROOF	M <sup>2</sup>	500	200	100000
82	FOUNDATION	M <sup>3</sup>	100	1000	100000
83	ROOFING	M <sup>2</sup>	500	200	100000
84	GLASS	M <sup>2</sup>	500	200	100000
85	DOORS	NO.	100	1000	100000
86	WINDOWS	NO.	200	500	100000
87	CEILING	M <sup>2</sup>	500	200	100000
88	FLOORING	M <sup>2</sup>	500	200	100000
89	WALLS	M <sup>2</sup>	500	200	100000
90	ROOF	M <sup>2</sup>	500	200	100000
91	FOUNDATION	M <sup>3</sup>	100	1000	100000
92	ROOFING	M <sup>2</sup>	500	200	100000
93	GLASS	M <sup>2</sup>	500	200	100000
94	DOORS	NO.	100	1000	100000
95	WINDOWS	NO.	200	500	100000
96	CEILING	M <sup>2</sup>	500	200	100000
97	FLOORING	M <sup>2</sup>	500	200	100000
98	WALLS	M <sup>2</sup>	500	200	100000
99	ROOF	M <sup>2</sup>	500	200	100000
100	FOUNDATION	M <sup>3</sup>	100	1000	100000

PROJECT TITLE:  
PROPOSED 80x80 STORED RESIDENTIAL BUILDING  
AT 3, MENJI SIBHANSI CHANDRA DASE ROAD,  
KOLKATA - 700004, P.S. - BECKETT PARK, WARD - 57  
BOBOUCH - X

SHEET TITLE: SECTION A & SECTION B  
DATE: 10/10/2024

DESIGNED BY: *[Signature]*  
CHECKED BY: *[Signature]*  
DATE: 10/10/2024

PROJECT TITLE:  
PROPOSED 80x80 STORED RESIDENTIAL BUILDING  
AT 3, MENJI SIBHANSI CHANDRA DASE ROAD,  
KOLKATA - 700004, P.S. - BECKETT PARK, WARD - 57  
BOBOUCH - X

SHEET TITLE: SECTION A & SECTION B  
DATE: 10/10/2024

DESIGNED BY: *[Signature]*  
CHECKED BY: *[Signature]*  
DATE: 10/10/2024

PROJECT TITLE:  
PROPOSED 80x80 STORED RESIDENTIAL BUILDING  
AT 3, MENJI SIBHANSI CHANDRA DASE ROAD,  
KOLKATA - 700004, P.S. - BECKETT PARK, WARD - 57  
BOBOUCH - X

SHEET TITLE: SECTION A & SECTION B  
DATE: 10/10/2024

DESIGNED BY: *[Signature]*  
CHECKED BY: *[Signature]*  
DATE: 10/10/2024