



## Get Latitude and Longitude

To make a search, use the name of a place, city, state, or address, or click the location on the map to **find lat long coordinates**.

Place Name

Find

Add the country code for better results. Ex: London, UK

Latitude	Longitude
22.448030	88.391630

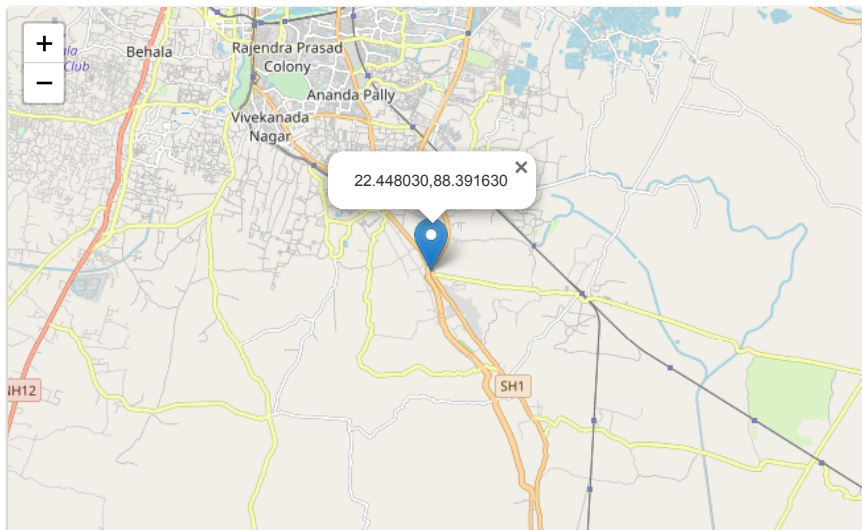


## Do Business with G Suite

Automatically saved changes keep the whole in sync. Try it free for 14 days.

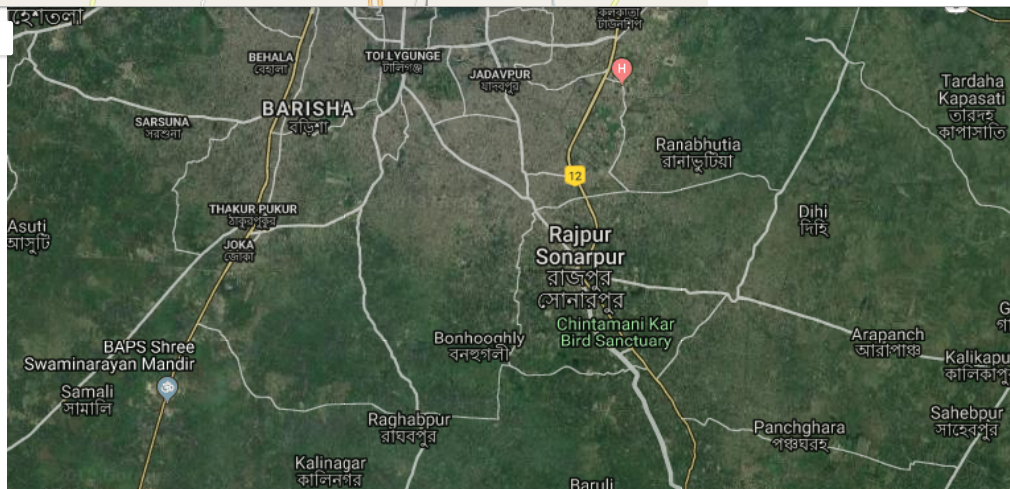
G Suite by Google Cloud

[SIGN UP](#)



Leaflet | © OpenStreetMap

[View larger map](#)



This website uses cookies to collect information about how you interact with our website. We use this information in order to improve and customize your browsing experience and for analytics and metrics about our visitors. To find out more about the cookies we use, see our [Privacy Policy](#).

Got it!

## Lat Long

(22.448030, 88.391630)

## GPS Coordinates

22° 26' 52.908" N

88° 23' 29.868" E



Share this location link

```
<a href="https://www.latlong.net/c/?lat=22.448030&long=88.391630" target="_blank">(22.448030, 88.391630)</a>
```

Copy and paste the html code above in your website to share.

Location page url

```
https://www.latlong.net/c/?lat=22.448030&long=88.391630
```

## What is Latitude and Longitude?

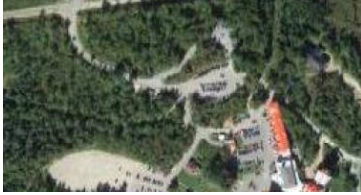
**Latitude and Longitude** are the units that represent the *coordinates at geographic coordinate system*. Just like every actual house has its address (which includes the number, the name of the street, city, etc), every single point on the surface of earth can be specified by the *latitude and longitude coordinates*. Therefore, by using latitude and longitude we can specify virtually any point on earth.

The **latitude** has the symbol of *phi*, and it shows the angle between the straight line in the certain point and the equatorial plane. The latitude is specified by degrees, starting from 0° and ending up with 90° to both sides of the equator, making latitude Northern and Southern. The equator is the line with 0° latitude. The **longitude** has the symbol of lambda and is another angular coordinate defining the position of a point on a surface of earth. The longitude is defined as an angle pointing west or east from the Greenwich Meridian, which is taken as the Prime Meridian. The longitude can be defined maximum as 180° east from the Prime Meridian and 180° west from the Prime Meridian.

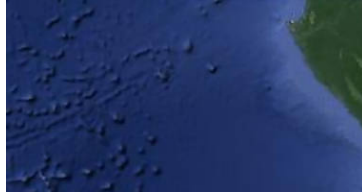
Both **latitude and longitude** are measured in **degrees**, which are in turn divided into minutes and seconds. For example, the tropical zone which is located to the south and to the north from the Equator is determined by the limits of 23°26'13.7" S and 23°26'13.7" N. Or. For example, the geographical coordinates of the mount Ngauruhoe in New Zealand, famous with its being the filming area for the Lord of the Rings movie, has the geographic coordinates of 39°09'24.6"S 175°37'55.8"E.

## About Lat Long

Latlong.net is an *online geographic tool* that can be used to **lookup latitude and longitude of a place**, and get its coordinates on map. You can search for a place using a city's or town's name, as well as the name of special places, and the correct *lat long coordinates* will be shown at the bottom of the latitude longitude finder form. At that, the place you found will be displayed with the point marker centered on map. Also the **gps coordinates** will be displayed below the map.



**44.258120, -71.441189**  
Latitude longitude Map



**Get Lat Long from Address**  
**Convert Address to**  
**Coordinates**



**29.958443, -90.064411**  
Latitude longitude Map



**Convert Lat Long to Address**  
**Show on Map**



**36.016066, -114.737732**  
Latitude longitude Map



**40.45, -80.2504** Latitude  
longitude Map



**Patna, Bihar, India Map Lat**  
**Long Coordinates**



**37.774929, -122**  
Latitude longiti

## Recently Added Places

- [Galesburg, ND, USA](#)  
A small town in Traill county, Galesburg is situated in the eastern part of North Dakota, the US...
- [Luverne, ND, USA](#)  
Luverne is a small village in the eastern North Dakota, north USA situated between the towns of Pillsbury...
- [Monash University, Clayton, VIC, Australia](#)  
Monash University is a large university situated in Clayton in the state of Victoria, Australia. Clayton is a...
- [Hankinson, ND, USA](#)  
Hankinson is a small town situated in the north easternmost corner of North Dakota, USA, right at the...
- [Barney, ND, USA](#)  
A small town in the south easternmost part of North Dakota, Barney is situated not far away from...

Visit [Where am I now](#) to find your current location on map.



*Thank you for using latlong.net...*



---

© 2012-2018 [www.LatLong.net](http://www.LatLong.net)

[» Privacy Policy](#) [» Contact Us](#) [» RSS](#)

We do not guarantee the accuracy of the given coordinates of the places in our database. Please use Latlong.net at your own risk.