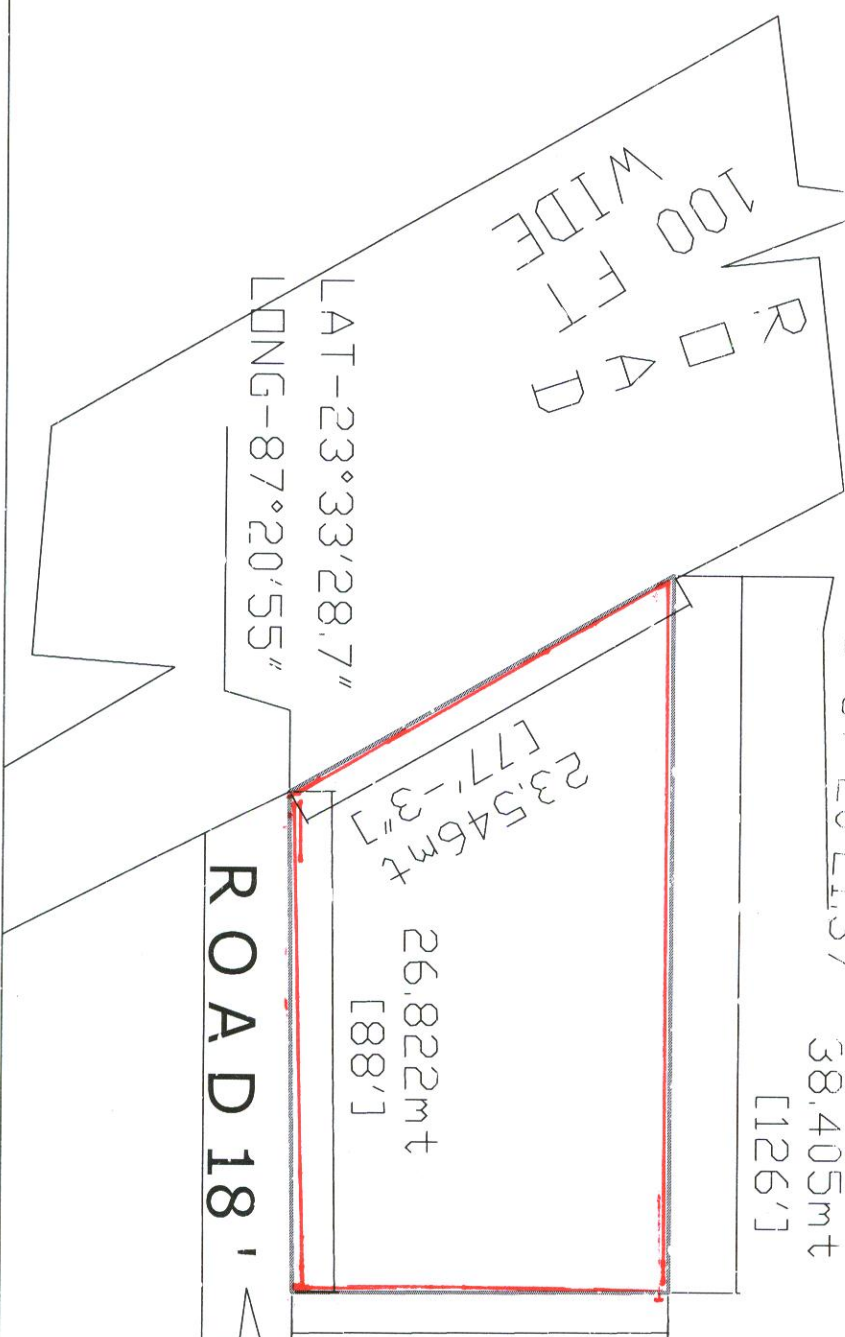


PLAN SHOWING THE LAND AT MOUZA FULLJHARI JL NO82  
RS PLOT NO--780(P) AREA 10 K PS NTPS DIST PASCHIM  
BARDHAMANN'



LAT-23°22'29.2"  
LONG-87°20'21.37"

38,405m<sup>2</sup>  
[1267]

LAT-23°32'8.6"  
LONG-87°20'21"

23,546m<sup>2</sup>  
[777-37]

26,822m<sup>2</sup>  
[887]

20,062m<sup>2</sup>  
[657-107]

ROAD 18

LAT- 23°32'28.2"  
LONG- 87°20'55"

*Sukumar Patra*  
Sukumar Patra  
Surveyor  
LIC NO:-11252  
Bardhamanagar - 06