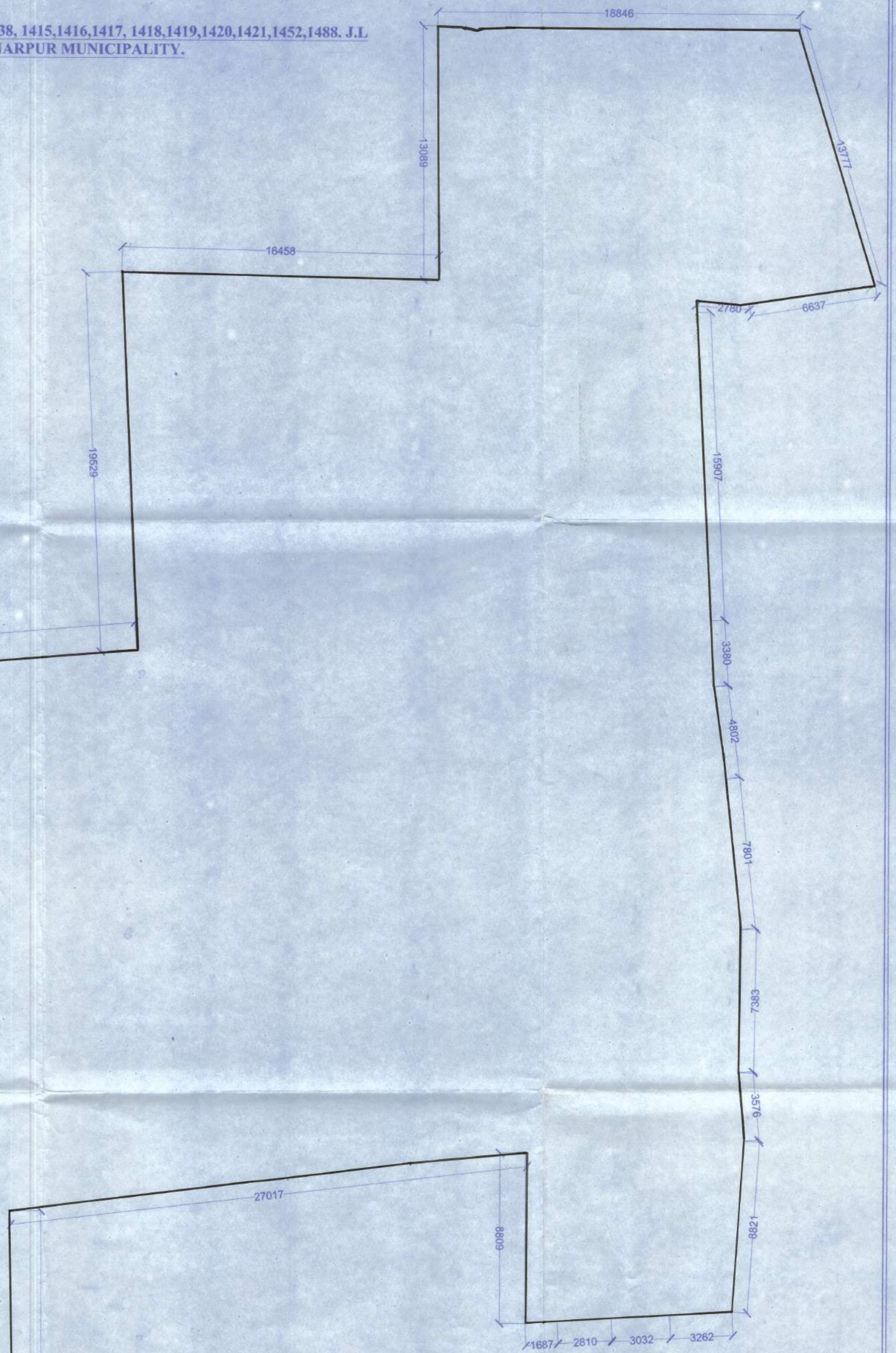
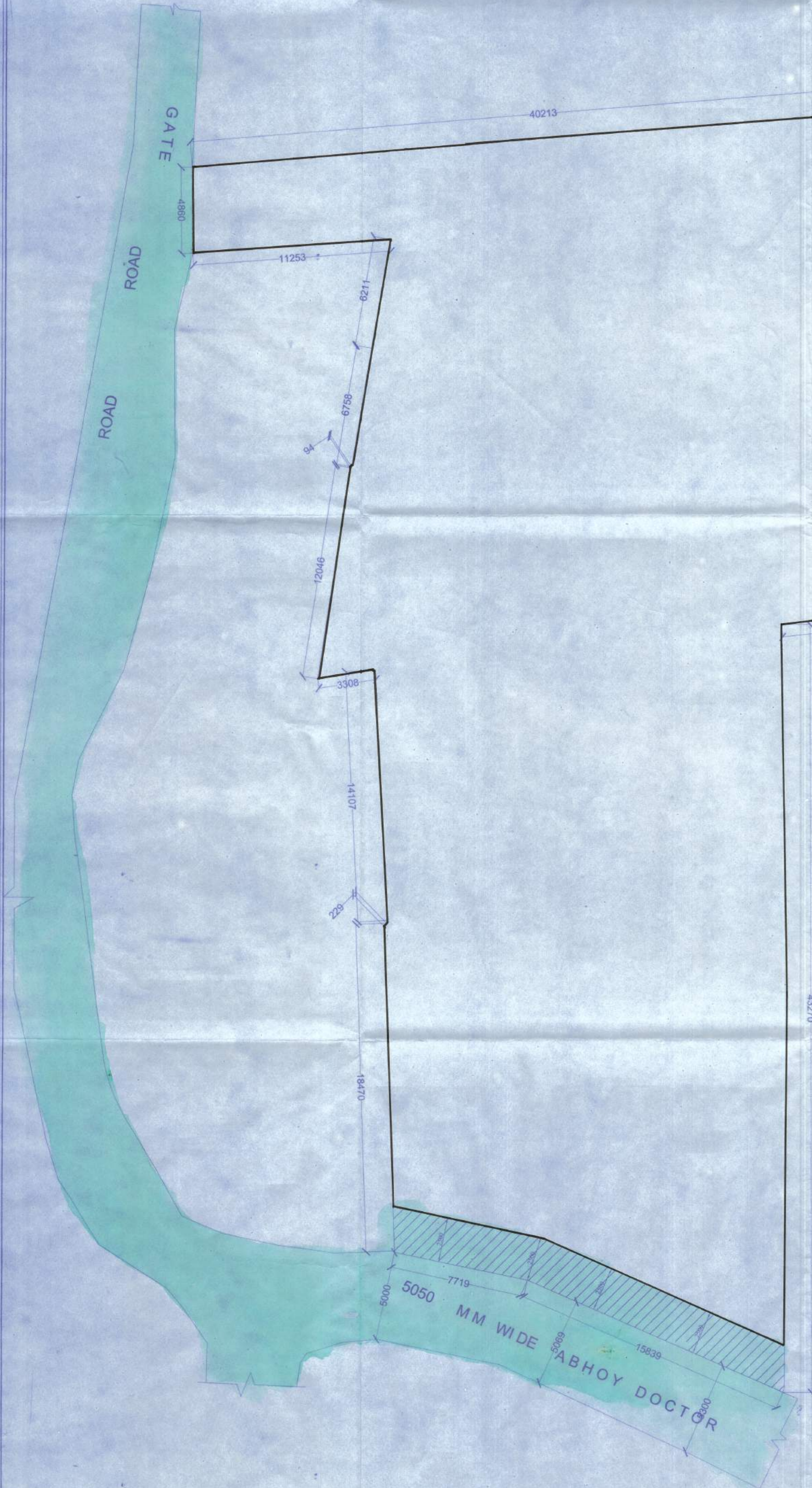


SITE PLAN AT HOLDING NO. 59 ABHAY DOCTOR LANE R.S. DAG NOS. 343, 344 / 436, R.S. KHATIAN NOS. 738, 1415, 1416, 1417, 1418, 1419, 1420, 1421, 1452, 1488. J.L. NO. 37 WARD NO. 17, MOUZA:- BAIKUNTHA PUR P.S. - SONARPUR, DIST.-24 PGS(S). UNDER RAJPUR - SONARPUR MUNICIPALITY.

LAND AREA (AS PER ASSESSMENT) = 54 K - 2 CH - 39 SQFT (3624.025 SQM)
 STRIP OF LAND AREA = 59.06 SQM
 LAND AREA (AS PER PHYSICAL) = 3551.97 SQM = 53 K - 1 CH - 28.41 SFT.
 BOUNDARY DEMARCATED BY BLACK BORDER.
 SCALE-1:100



DECLARATION OF E.B.A
 THE SITE IS MEASURED BY ME, AND IT TALLIES WITH THE DEED PLAN, AND ACTUAL MEASUREMENT, MENTIONED IN THE PROPOSED PLAN.

Sarbanu Majumder
 FOR M/S. SARBANU MAJUMDER CONSULTANTS PVT. LTD.
 SARBANU MAJUMDER
 COA. REG. NO. 92 / 15458
 E.B.A. NO. - 655
 UNDER RAJPUR - SONARPUR MUNICIPALITY

SIGNATURE OF E.B.A

DECLARATION OF OWNER
 THE BLACK MARKED PORTION OF LAND IS IN MY POSSESSION, AND IT IS FREE FROM ALL ENCUMBRANCES.

TODI NIKETAN PVT. LTD.
 DAYLIGHT SALES PVT. LTD.
 SACHIN VINHAY PVT. LTD.
 ARCHITA BRICKS PVT. LTD.
 ANSHEY NIRMAL PVT. LTD.
 NPK FINANCIAL SERVICES PVT. LTD.
 TODI CONSTRUCTIONS PVT. LTD.
Moumita Choudhary
 CONSTITUTED ATTORNEY

SIGNATURE OF OWNER

APPROVED
 Plan No. _____ Dated _____
S. S. Saha *S. S. Saha*
 Sd/- Asstt. Engineer Asstt. Engineer
 RAJPUR-SONARPUR MUNICIPALITY
 25/1/21

OFFICE USE ONLY