

PROPOSED G+V STORED RESIDENTIAL BUILDING PLAN
 AT, MOUZA - GOPALPUR, JL. NO. - 02, TOUNZINO - 2998, R.S. NO. - 140,
 R.S. DAG NO. - 2844, 2845, 2846, 2839, 2830,
 C.S. KHATAN NO. - 232, 270, 2876, 2877, 2878, 310, C.S. DAG NO. - 812, 813, 814,
 C.S. KHATAN NO. - 176, 1290, 1291, 1292, L.R. KHATAN NO. - 10279, 10280, 10281,
 10282, 10283, 10284, 10285, 10286, 10287, 10288, 10289, 10290, 10291, 10292,
 DIST. - 24 PGS (N), UNDER RAJASHAH GOPALPUR MUNICIPALITY.

SANCTION SITE PLAN SL. NO. - DATE -
 NAME OF OWNER -
 1) KEDARNATH NIRMAN PVT. LTD.
 2) CHANDRA SEKHAR NIRMAN PVT. LTD.
 3) SOMNATH NIRMAN PVT. LTD.
 4) SHRI KUMAR NIRMAL
 5) SHRI SAKET KUMAR MONDAL
 6) SMT. JHINKU ROY
 7) SMT. SANDHYA RANI SAHA
 8) SMT. DIPPA SAHA
 9) SMT. GOPA SAHA
 10) SMT. ANITA SAHA
 11) SHRI SHANTIMOY MAJUMDAR

AREA STATEMENT
 TOTAL AREA OF LAND (AS PER DEED) = 2340.79 SQ.M.
 = 34.5 CH=325FT.
 = 2206.87 SQ.M.
 = 336.13 CH=408FT.
 PERMISSIBLE GROUND COVERAGE (50.00% OF LAND AREA) = 1170.395 SQ.M.
 PROPOSED COVERED AREA OF GROUND FLOOR (BLOCK-I & II) = 1044.13 SQ.M.
 BLOCK - I = 300.89 SQ.M.
 BLOCK - II = 743.24 SQ.M.
 AREA OF CAR PARKING (BLOCK-I) = 269.00 SQ.M.
 SERVICE AREA (BLOCK-I) = 31.89 SQ.M.
 AREA OF CAR PARKING (BLOCK-II) = 669.87 SQ.M.
 SERVICE AREA (BLOCK-II) = 73.37 SQ.M.
 PROPOSED COVERED AREA OF TYPICAL FLOOR (BLOCK-I & II) (LIST TO 5TH) EACH = 1212.47 SQ.M.
 (LIST TO 5TH) EACH = 356.11 SQ.M.
 AREA OF STAIR/LIFT PASSAGE = 43.75 SQ.M.
 PROPOSED COVERED AREA OF TYPICAL FLOOR (BLOCK-II) = 856.36 SQ.M.
 (LIST TO 5TH) EACH

FLAT-A = 85.78 SQ.M
 FLAT-B = 83.61 SQ.M
 FLAT-C = 79.48 SQ.M
 FLAT-D = 82.50 SQ.M
 FLAT-E = 84.25 SQ.M
 FLAT-F = 84.25 SQ.M
 FLAT-G = 62.59 SQ.M
 FLAT-H = 79.98 SQ.M
 FLAT-I = 62.16 SQ.M
 AREA OF STAIR/LIFT PASSAGE = 77.57 SQ.M.

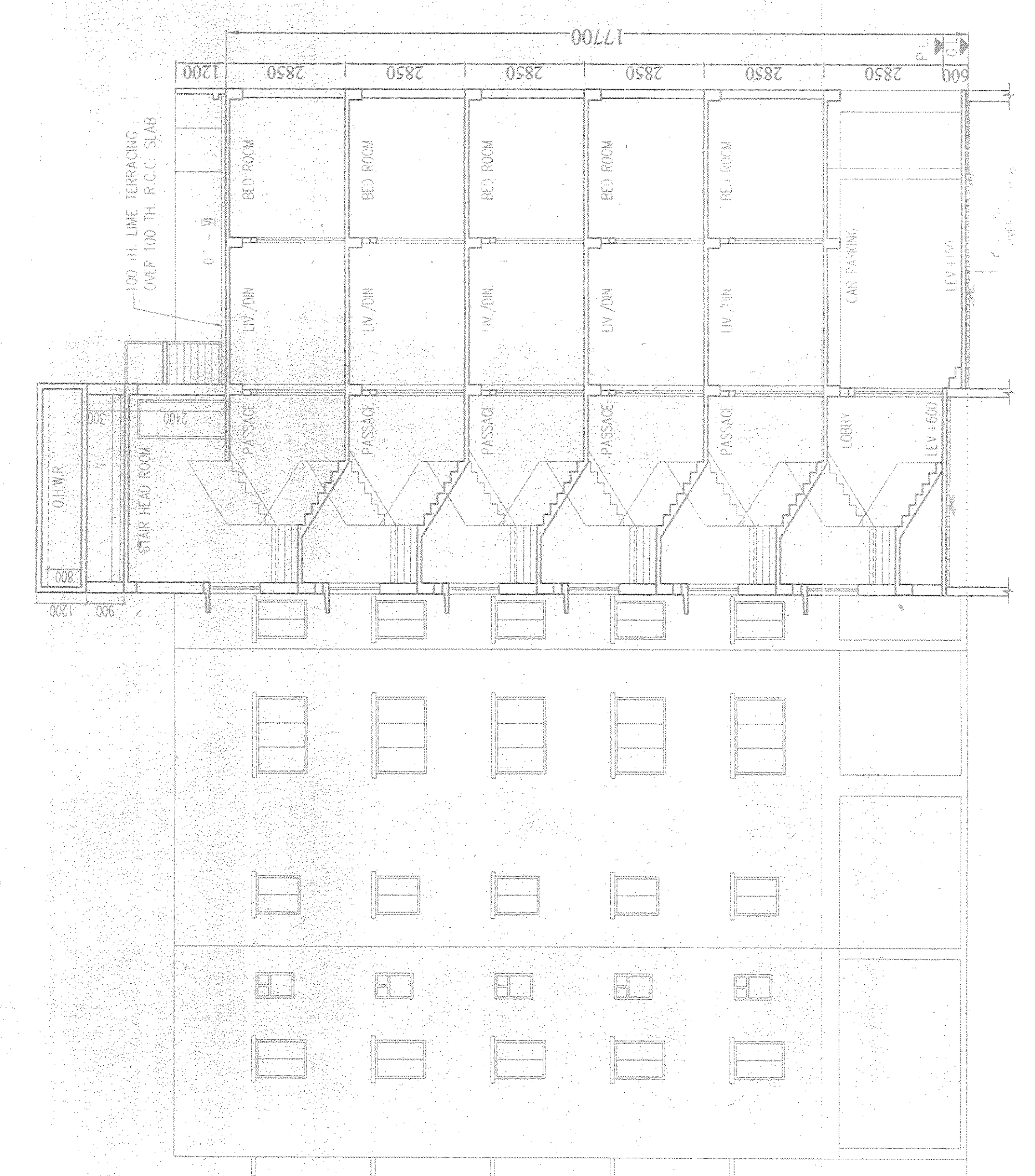
FLOOR	TYPE	AREA (SQ.M)	AREA (CH)	AREA (SQ.FT)
0	GR	2340.79	34.5	325
1	GR	1044.13	15.4	142
2	GR	1044.13	15.4	142
3	GR	1044.13	15.4	142
4	GR	1044.13	15.4	142
5	GR	1044.13	15.4	142
6	GR	1044.13	15.4	142
7	GR	1044.13	15.4	142
8	GR	1044.13	15.4	142
9	GR	1044.13	15.4	142
10	GR	1044.13	15.4	142
11	GR	1044.13	15.4	142
12	GR	1044.13	15.4	142
13	GR	1044.13	15.4	142
14	GR	1044.13	15.4	142
15	GR	1044.13	15.4	142
16	GR	1044.13	15.4	142
17	GR	1044.13	15.4	142
18	GR	1044.13	15.4	142
19	GR	1044.13	15.4	142
20	GR	1044.13	15.4	142
21	GR	1044.13	15.4	142
22	GR	1044.13	15.4	142
23	GR	1044.13	15.4	142
24	GR	1044.13	15.4	142
25	GR	1044.13	15.4	142
26	GR	1044.13	15.4	142
27	GR	1044.13	15.4	142
28	GR	1044.13	15.4	142
29	GR	1044.13	15.4	142
30	GR	1044.13	15.4	142
31	GR	1044.13	15.4	142
32	GR	1044.13	15.4	142
33	GR	1044.13	15.4	142
34	GR	1044.13	15.4	142
35	GR	1044.13	15.4	142
36	GR	1044.13	15.4	142
37	GR	1044.13	15.4	142
38	GR	1044.13	15.4	142
39	GR	1044.13	15.4	142
40	GR	1044.13	15.4	142
41	GR	1044.13	15.4	142
42	GR	1044.13	15.4	142
43	GR	1044.13	15.4	142
44	GR	1044.13	15.4	142
45	GR	1044.13	15.4	142
46	GR	1044.13	15.4	142
47	GR	1044.13	15.4	142
48	GR	1044.13	15.4	142
49	GR	1044.13	15.4	142
50	GR	1044.13	15.4	142
51	GR	1044.13	15.4	142
52	GR	1044.13	15.4	142
53	GR	1044.13	15.4	142
54	GR	1044.13	15.4	142
55	GR	1044.13	15.4	142
56	GR	1044.13	15.4	142
57	GR	1044.13	15.4	142
58	GR	1044.13	15.4	142
59	GR	1044.13	15.4	142
60	GR	1044.13	15.4	142
61	GR	1044.13	15.4	142
62	GR	1044.13	15.4	142
63	GR	1044.13	15.4	142
64	GR	1044.13	15.4	142
65	GR	1044.13	15.4	142
66	GR	1044.13	15.4	142
67	GR	1044.13	15.4	142
68	GR	1044.13	15.4	142
69	GR	1044.13	15.4	142
70	GR	1044.13	15.4	142
71	GR	1044.13	15.4	142
72	GR	1044.13	15.4	142
73	GR	1044.13	15.4	142
74	GR	1044.13	15.4	142
75	GR	1044.13	15.4	142
76	GR	1044.13	15.4	142
77	GR	1044.13	15.4	142
78	GR	1044.13	15.4	142
79	GR	1044.13	15.4	142
80	GR	1044.13	15.4	142
81	GR	1044.13	15.4	142
82	GR	1044.13	15.4	142
83	GR	1044.13	15.4	142
84	GR	1044.13	15.4	142
85	GR	1044.13	15.4	142
86	GR	1044.13	15.4	142
87	GR	1044.13	15.4	142
88	GR	1044.13	15.4	142
89	GR	1044.13	15.4	142
90	GR	1044.13	15.4	142
91	GR	1044.13	15.4	142
92	GR	1044.13	15.4	142
93	GR	1044.13	15.4	142
94	GR	1044.13	15.4	142
95	GR	1044.13	15.4	142
96	GR	1044.13	15.4	142
97	GR	1044.13	15.4	142
98	GR	1044.13	15.4	142
99	GR	1044.13	15.4	142
100	GR	1044.13	15.4	142

CERTIFICATE OF OWNER
 CERTIFIED THAT WE HAVE GONE THROUGH THE BUILDING RULES FOR...
 BY THOSE RULES DURING AND AFTER CONSTRUCTION OF THE BUILDING.
 KEDARNATH NIRMAN PVT. LTD. *(Signature)*
 Director
 Smt. Manish *(Signature)*
 Director
 Somnath Nirmal *(Signature)*
 Director
 Shri Saket Kumar Mondal *(Signature)*
 Director
 Smt. Jhinku Roy *(Signature)*
 Director
 Smt. Sandhya Rani Saha *(Signature)*
 Director
 Smt. Dipa Saha *(Signature)*
 Director
 Smt. Anita Saha *(Signature)*
 Director
 Shri Shantimoy Majumdar *(Signature)*
 Director

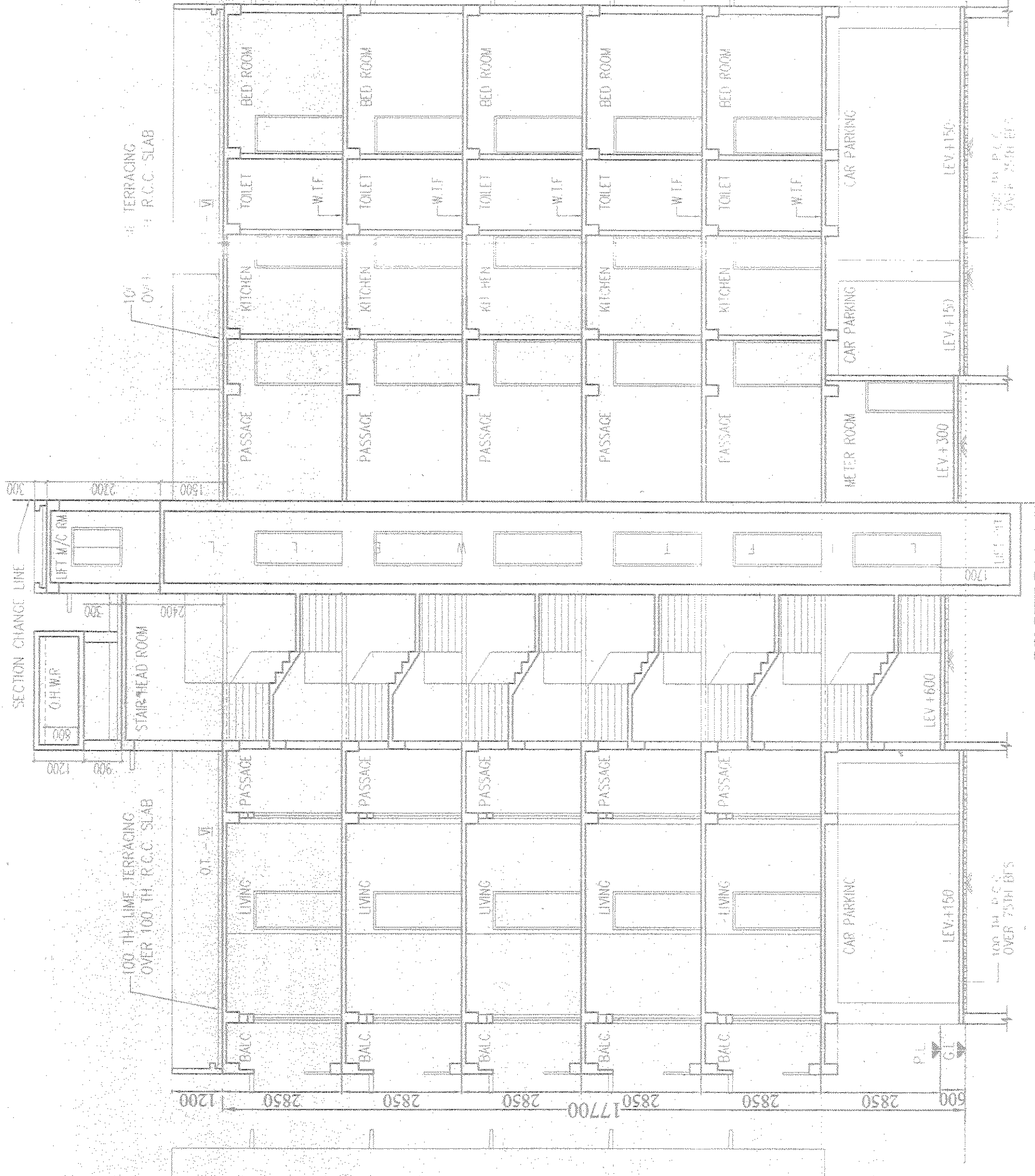
CERTIFICATE OF ARCHITECT ENGINEER
 CERTIFIED THAT THE FOUNDATION OF THE SUPER STRUCTURE OF THE BUILDING IS IN ALL RESPECT INCLUDING THE CONSIDERATION OF BEARING CAPACITY OF SOIL ETC.
 Piyal Goswami
 Piyal Goswami
 B.C.E., M.I.E.
 Chartered Engineer (I)
 Raj Kumar Agarwal
 Member of Council of Architecture CAI 94 / 17940
 -SIG. OF ARCHITECT-
 -SIG. OF OWNERS-
 -SIG. OF ENGINEER-

NOTE:
 1. SCALE: 1/100
 2. ALL DIMENSIONS ARE IN MM UNLESS NOTED OTHERWISE.
 3. SHEET NO. 2

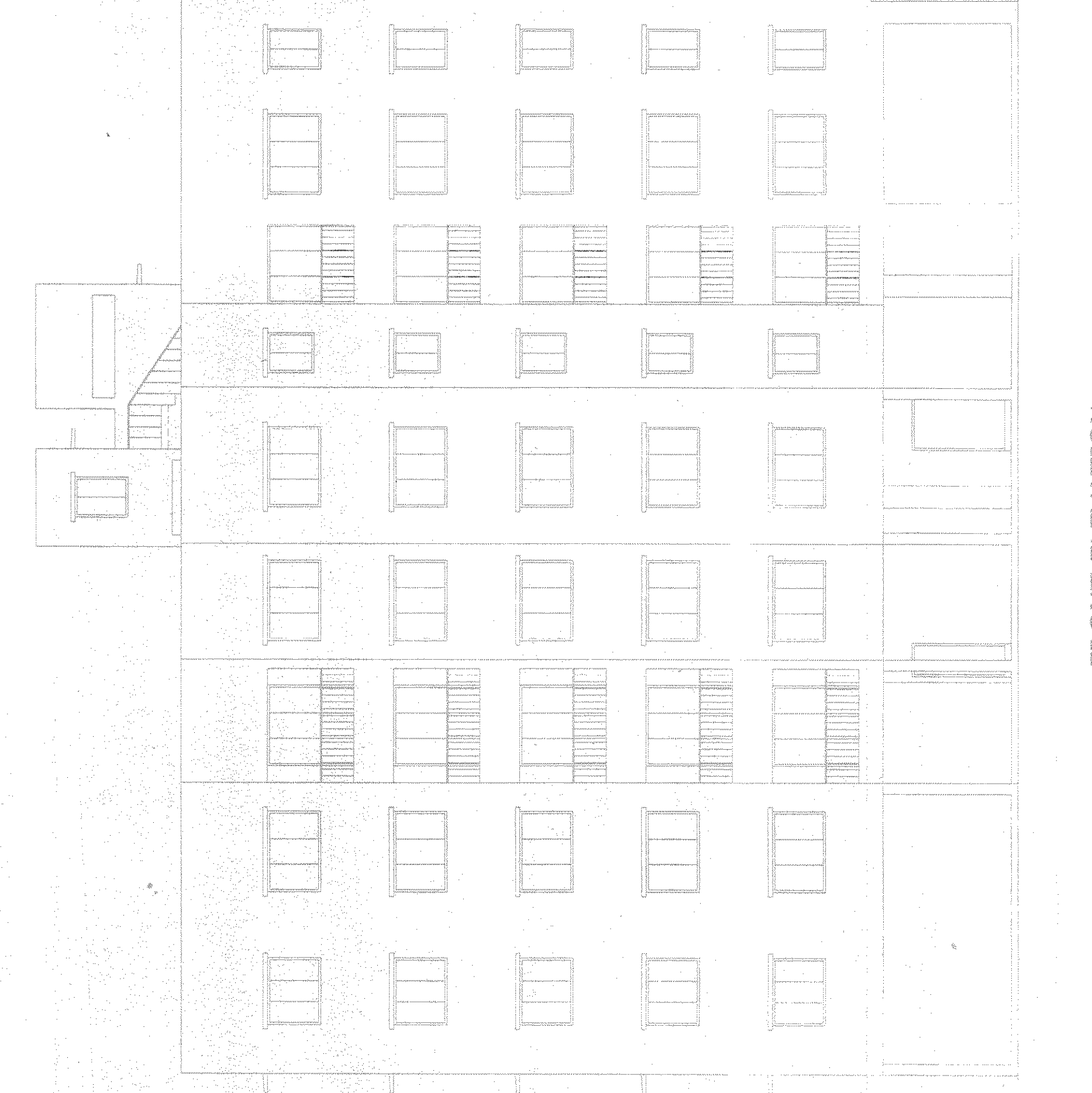
-SIG. OF COUNCILLOR
 -SIG. OF ARCHITECT-
 -SIG. OF ENGINEER-



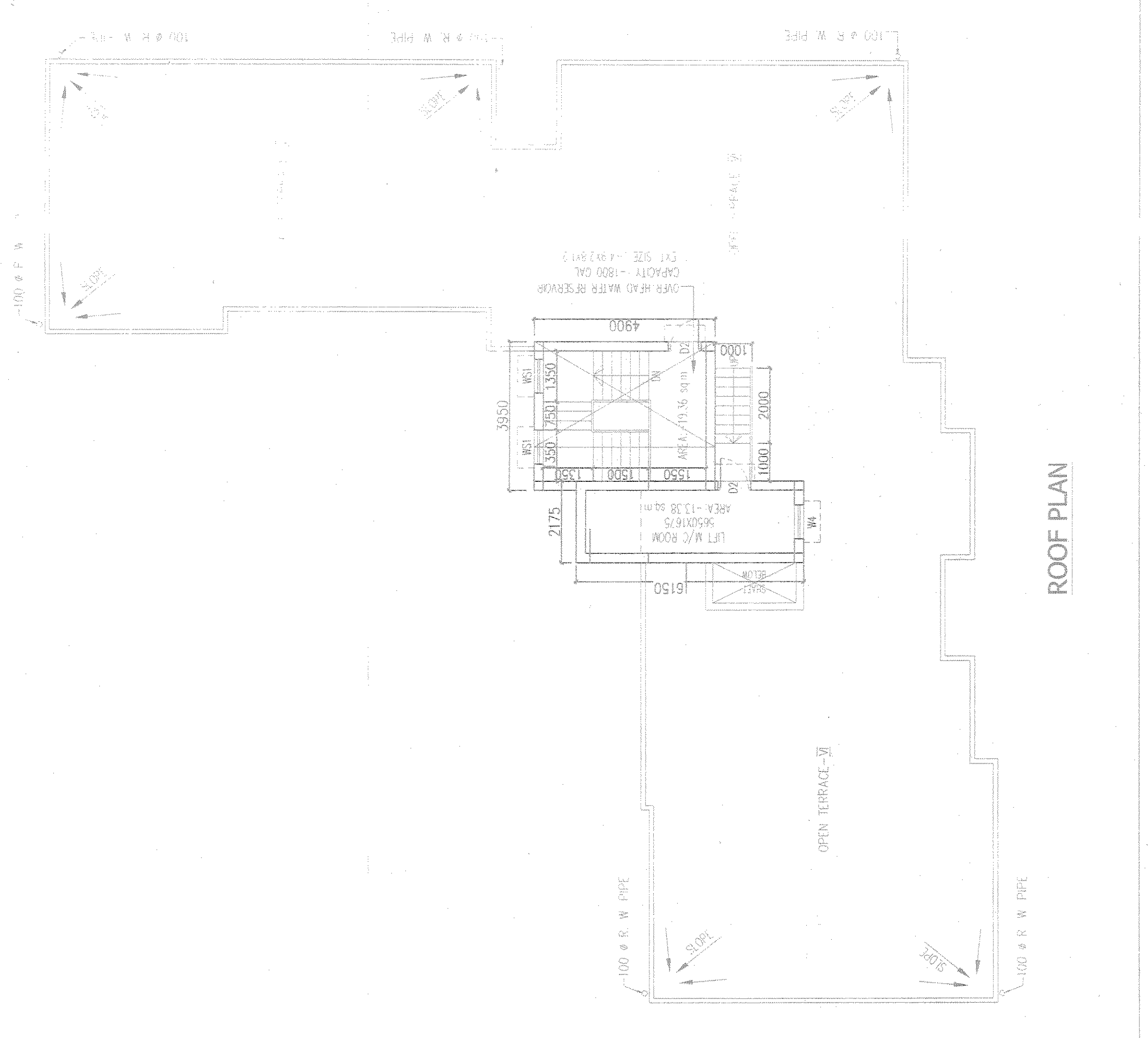
SECTION AT B-B



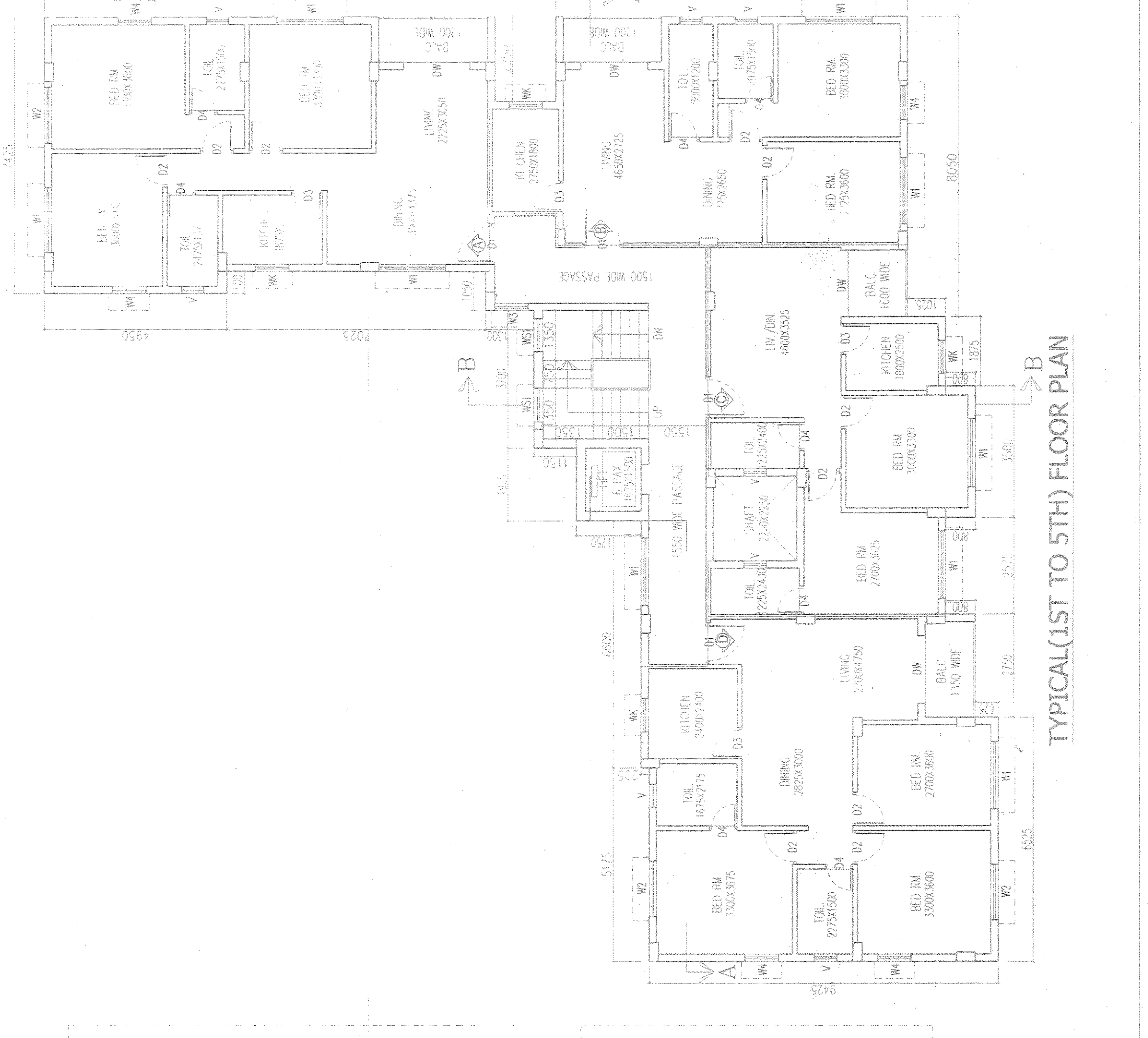
SECTION AT A-A



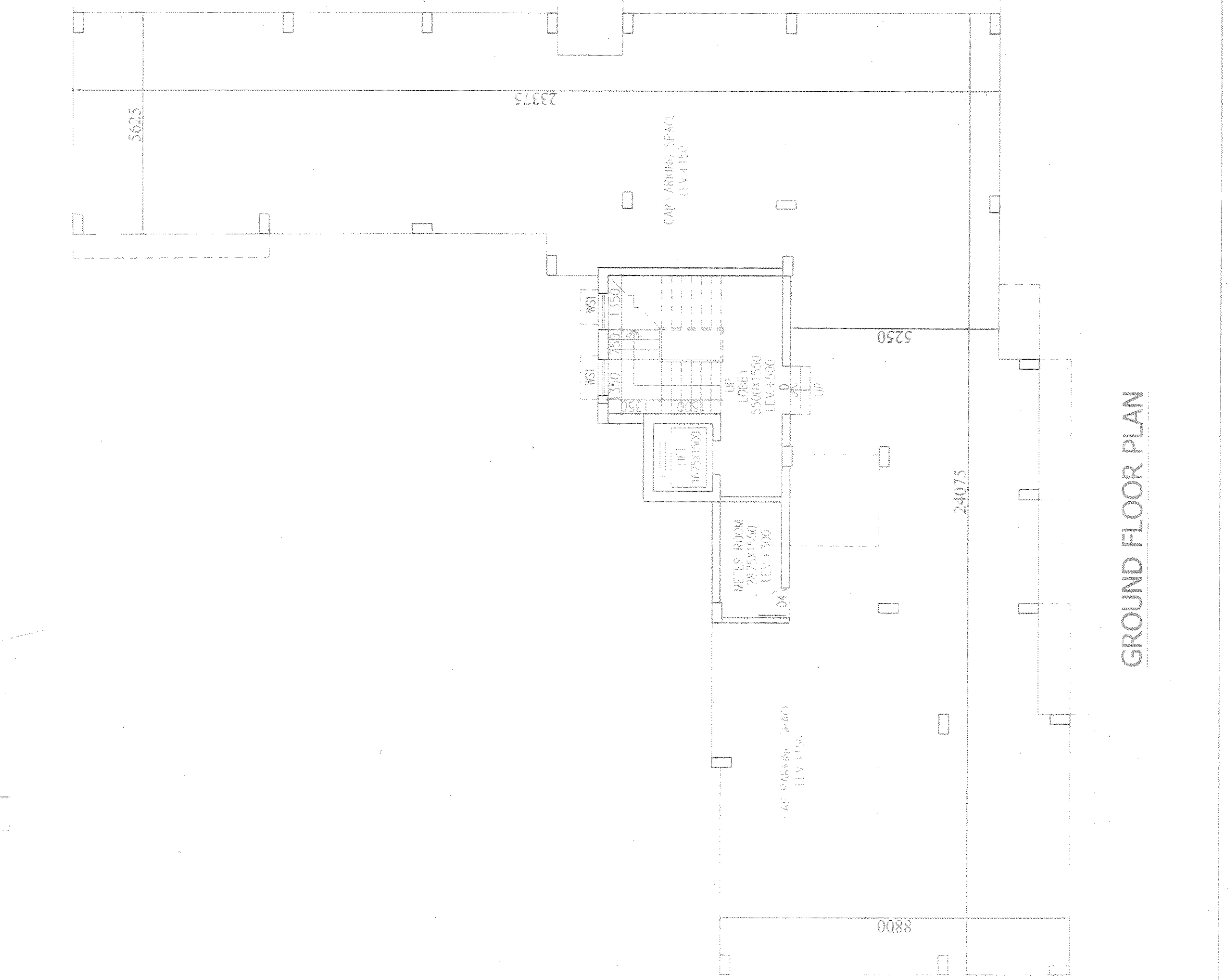
FRONT ELEVATION



ROOF PLAN



TYPICAL (1ST TO 5TH) FLOOR PLAN



GROUND FLOOR PLAN