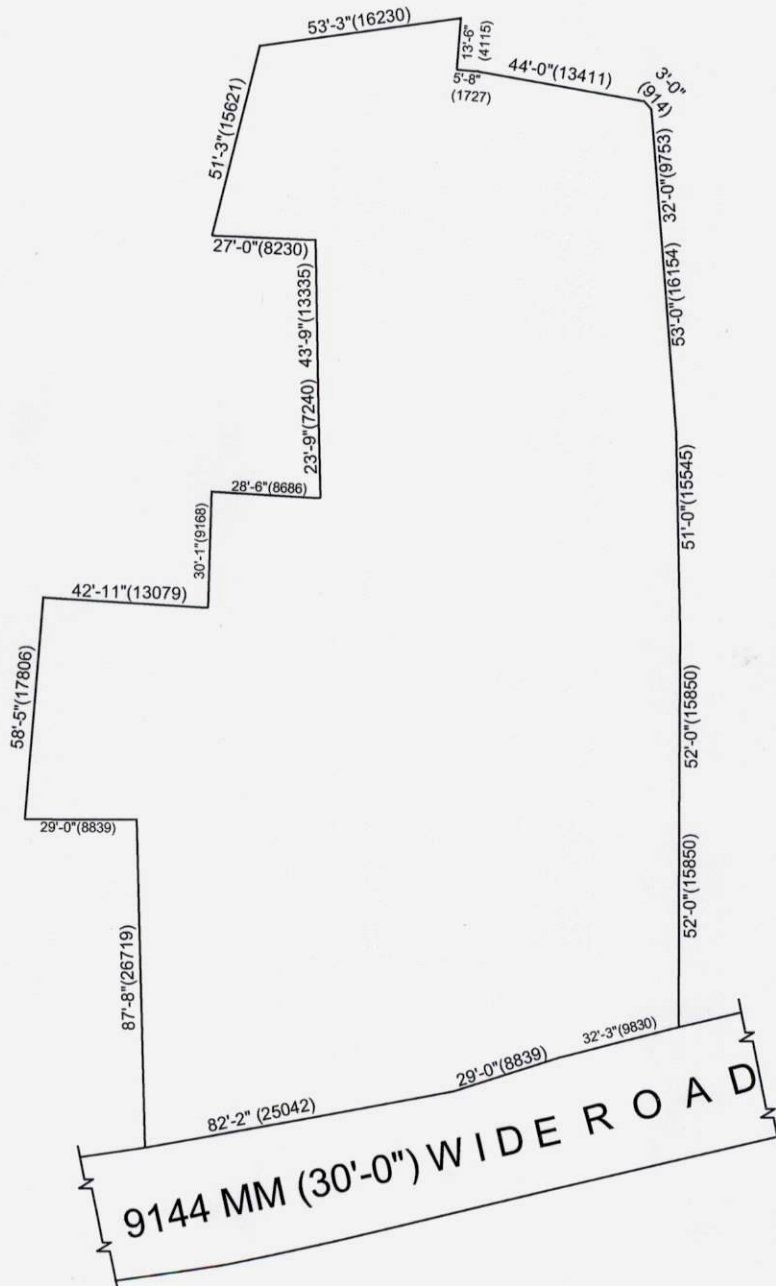


SITE PLAN OF A LAND OF ABHILASHINI REALCON PVT. LTD., SITUATED AT RS. DAG NOS: 1325,1329,1330, 1331& 1332, L.R. KHATIAN NOS:7267,6248,5705,5706,5707,7220,7222,,7229,2087, 2088,6838,6839,6837,6833,6834,68356799, MOUZA: RECKJOYANI, JL NO: 13, PS: RAJARHAT, DISTRICT:24 PARGANAS(N) UNDER RAJARHAT BISHNUPUR 1 NO GRAM

Latitude : 22° 37' 37" N  
 Longitude : 88° 28' 40" E



SCALE:-N.T.S.



Abhilashini Realcon Pvt. Ltd.

*Sk Na*

Director

SIGNATURE