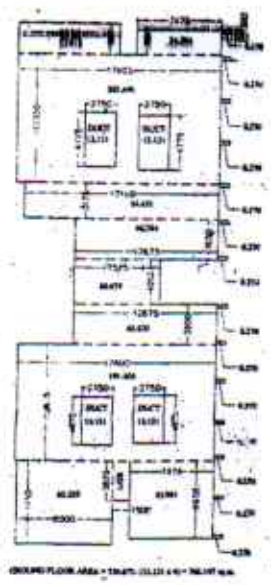
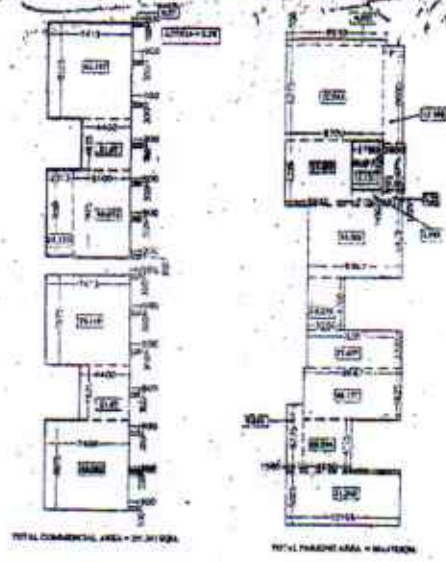


REQUIRED PARKING
 1. FOR MERCANTILE RETAIL = 29' x 41' = 1199 SQ. FT. = 2 NOS. + 1 = 3 NOS.
 2. FOR RESIDENTIAL = 231' x 20' = 4620 SQ. FT. = 19 NOS.
 TOTAL REQUIREMENTS OF PARKING = 22 NOS.



AREA REDUCTION FOR P.A.S.
 STAIR AREA = 14,240 X 3 = 42,720 SQ. FT.
 LIFT AREA = 3,375 X 3 = 10,125 SQ. FT.
 LIFT LANDING AREA = 4,95 X 3 = 14,850 SQ. FT.
 TOTAL AREA REDUCTION = 67,695 SQ. FT.



SL. NO.	AREA
1	14,240
2	3,375
3	4,95
4	33,048
5	14,240
6	3,375
7	4,95
8	33,048
9	14,240
10	3,375
11	4,95
12	33,048
13	14,240
14	3,375
15	4,95
16	33,048
17	14,240
18	3,375
19	4,95
20	33,048

GREEN