

SITE PLAN OF A LAND AT CORRESPONDING TO

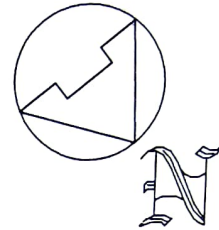
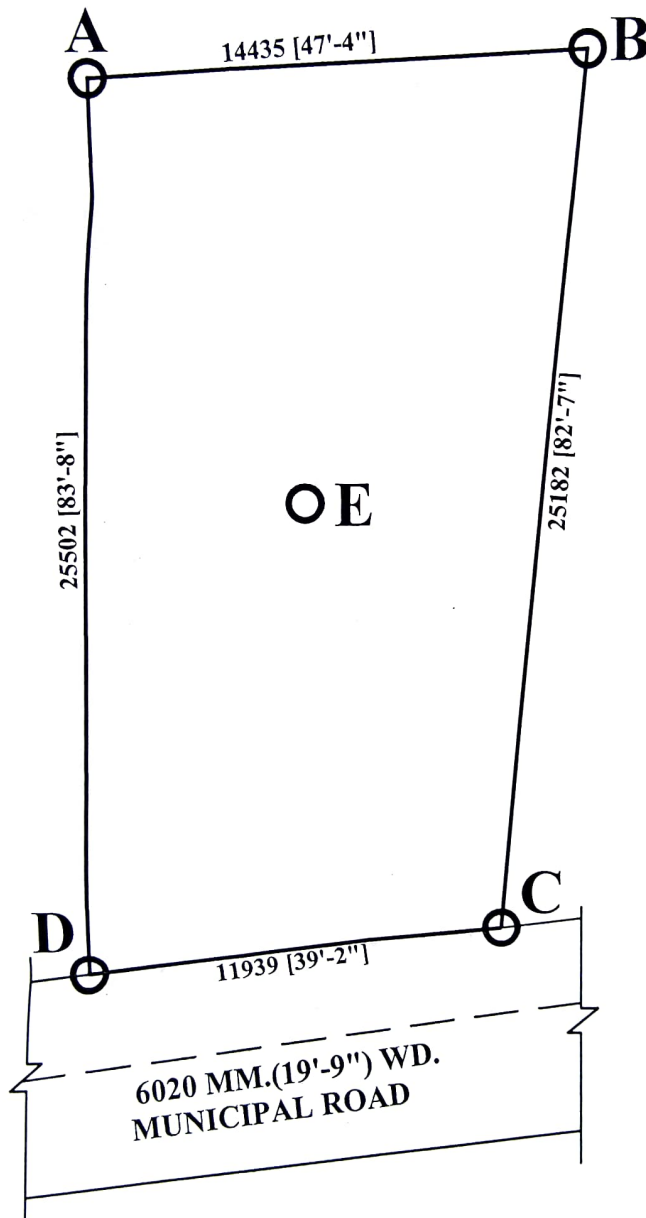
MOUZA - DOHARIA, J.L. NO.- 45, Re. Sa NO.- 132, R.S. DAG NO.-1503,

R.S.KH. NO.-238 , HAL KH. NO.-979, TOUZI NO.-146, WARD NO.-9,

HOLDING NO.-203/2 (METHOPARA NORTH)

P.S.-MADHAYAMGRAM, DIST.- NORTH 24 PARGANAS, UNDER

MADHYAMGRAM MUNICIPALITY.



PANACHE ENCLAVE

ARCIAN...
M-Te...
License No. .../2017

NOS	LATTITUDE	LONGITUDE	
A	22.682287	88.466981	
B	22.682311	88.466845	
C	22.682509	88.466898	TOTAL AREA OF LAND =331.709 SQ.M. 4 K. -15 CH.-15 SFT.(MORE OR LESS)
D	22.682500	88.467016	
E	22.682408	88.466943	ALL DIMENSIONS ARE IN MM.