

Sl. No.	Room	Area	Volume
1	Basement	1200	1200
2	Ground Floor	1500	1500
3	1st Floor	1500	1500
4	2nd Floor	1500	1500
5	3rd Floor	1500	1500
6	4th Floor	1500	1500
7	5th Floor	1500	1500
8	6th Floor	1500	1500
9	7th Floor	1500	1500
10	8th Floor	1500	1500
11	9th Floor	1500	1500
12	10th Floor	1500	1500
13	11th Floor	1500	1500
14	12th Floor	1500	1500
15	13th Floor	1500	1500
16	14th Floor	1500	1500
17	15th Floor	1500	1500
18	16th Floor	1500	1500
19	17th Floor	1500	1500
20	18th Floor	1500	1500
21	19th Floor	1500	1500
22	20th Floor	1500	1500
23	21st Floor	1500	1500
24	22nd Floor	1500	1500
25	23rd Floor	1500	1500
26	24th Floor	1500	1500
27	25th Floor	1500	1500
28	26th Floor	1500	1500
29	27th Floor	1500	1500
30	28th Floor	1500	1500
31	29th Floor	1500	1500
32	30th Floor	1500	1500
33	31st Floor	1500	1500
34	32nd Floor	1500	1500
35	33rd Floor	1500	1500
36	34th Floor	1500	1500
37	35th Floor	1500	1500
38	36th Floor	1500	1500
39	37th Floor	1500	1500
40	38th Floor	1500	1500
41	39th Floor	1500	1500
42	40th Floor	1500	1500
43	41st Floor	1500	1500
44	42nd Floor	1500	1500
45	43rd Floor	1500	1500
46	44th Floor	1500	1500
47	45th Floor	1500	1500
48	46th Floor	1500	1500
49	47th Floor	1500	1500
50	48th Floor	1500	1500
51	49th Floor	1500	1500
52	50th Floor	1500	1500
53	51st Floor	1500	1500
54	52nd Floor	1500	1500
55	53rd Floor	1500	1500
56	54th Floor	1500	1500
57	55th Floor	1500	1500
58	56th Floor	1500	1500
59	57th Floor	1500	1500
60	58th Floor	1500	1500
61	59th Floor	1500	1500
62	60th Floor	1500	1500
63	61st Floor	1500	1500
64	62nd Floor	1500	1500
65	63rd Floor	1500	1500
66	64th Floor	1500	1500
67	65th Floor	1500	1500
68	66th Floor	1500	1500
69	67th Floor	1500	1500
70	68th Floor	1500	1500
71	69th Floor	1500	1500
72	70th Floor	1500	1500
73	71st Floor	1500	1500
74	72nd Floor	1500	1500
75	73rd Floor	1500	1500
76	74th Floor	1500	1500
77	75th Floor	1500	1500
78	76th Floor	1500	1500
79	77th Floor	1500	1500
80	78th Floor	1500	1500
81	79th Floor	1500	1500
82	80th Floor	1500	1500
83	81st Floor	1500	1500
84	82nd Floor	1500	1500
85	83rd Floor	1500	1500
86	84th Floor	1500	1500
87	85th Floor	1500	1500
88	86th Floor	1500	1500
89	87th Floor	1500	1500
90	88th Floor	1500	1500
91	89th Floor	1500	1500
92	90th Floor	1500	1500
93	91st Floor	1500	1500
94	92nd Floor	1500	1500
95	93rd Floor	1500	1500
96	94th Floor	1500	1500
97	95th Floor	1500	1500
98	96th Floor	1500	1500
99	97th Floor	1500	1500
100	98th Floor	1500	1500
101	99th Floor	1500	1500
102	100th Floor	1500	1500

NOTE: ALL RECOMMENDATIONS OF WEST BENGAL FIRE SERVICES AND CIVIL AVIATION AUTHORITY WILL BE STRICTLY ADHERED TO THIS PROJECT.

CERTIFICATE OF THE ARCHITECT
 I CERTIFY THAT THE BUILDING PLAN HAS BEEN DRAWN UP AS PER PROVISIONS OF NEW TOWN PLANNING AREA LAND USE AND DEVELOPMENT CONTROL RULES, 2002 AND NEW TOWN, KOLKATA DEVELOPMENT CONTROL REGULATIONS, 2002 WHEREIN THE WIDTH OF THE BUILDING FRONT ON THE S-W IS 59 MTS. M.A.R.
AJOY K. CHOUHURY
 NAME AND SIGNATURE OF ARCHITECT
 ADDRESS OF THE ARCHITECT: SUITE#1001-1003, 10th FLOOR, DLF GALLERIA TOWERS, DLF CITY, PHASE-IV, GURGAON-122002, HARYANA, (COUNCIL REGISTRATION NO. 0475/992)

CERTIFICATE OF THE STRUCTURAL ENGINEER/CIVIL ENGINEER
 THE STRUCTURAL DESIGN AND DRAWINGS OF BOTH THE FOUNDATION AND SUPERSTRUCTURE OF THE BUILDING HAS BEEN MADE BY ME CONSIDERING THE SOIL TEST REPORT SUBMITTED BY M/S. RAJAN RAY OF M/S. S. K. MITRA AND ASSOCIATES AND ALSO CONSIDERING ALL POSSIBLE LOADS, SEISMIC LOAD AND THE MOMENTS GENERATED BY THE PROPOSED STRUCTURE AS PER BIS AND THE NATIONAL BUILDING CODE OF INDIA AND CERTIFIED THAT IT IS SAFE AND STABLE IN ALL RESPECT AND THESE PROVISIONS SHALL BE ADHERED TO DURING THE CONSTRUCTION.
S. C. MEHROTRA
 NAME AND SIGNATURE OF STRUCTURAL ENGINEER/CIVIL ENGINEER
 ADDRESS OF STRUCTURAL ENGINEER/CIVIL ENGINEER: A-10A, SAFDALING ENCLAVE, NEW DELHI - 110029.

OWNER
UNITECH INFRASTRUCTURE PVT. LTD.
 22, CAMAG STREET, KOLKATA - 70016, TEL: +91 33 22892000 FAX: +91 33 22891530

unitech
 BENGAL UNITECH UNIVERSAL INFRASTRUCTURE PVT. LTD. BLOCK - C, 4TH FLOOR, 22, CAMAG STREET, KOLKATA - 70016, TEL: +91 33 22892000 FAX: +91 33 22891530

RMJM

ACA
 AJOY CHOUHURY & ASSOCIATES ARCHITECTURE & URBAN DESIGN
 SUITE #1001-1003, 10TH FLOOR, DLF GALLERIA TOWERS, DLF CITY, PHASE-IV, GURGAON-122002, HARYANA

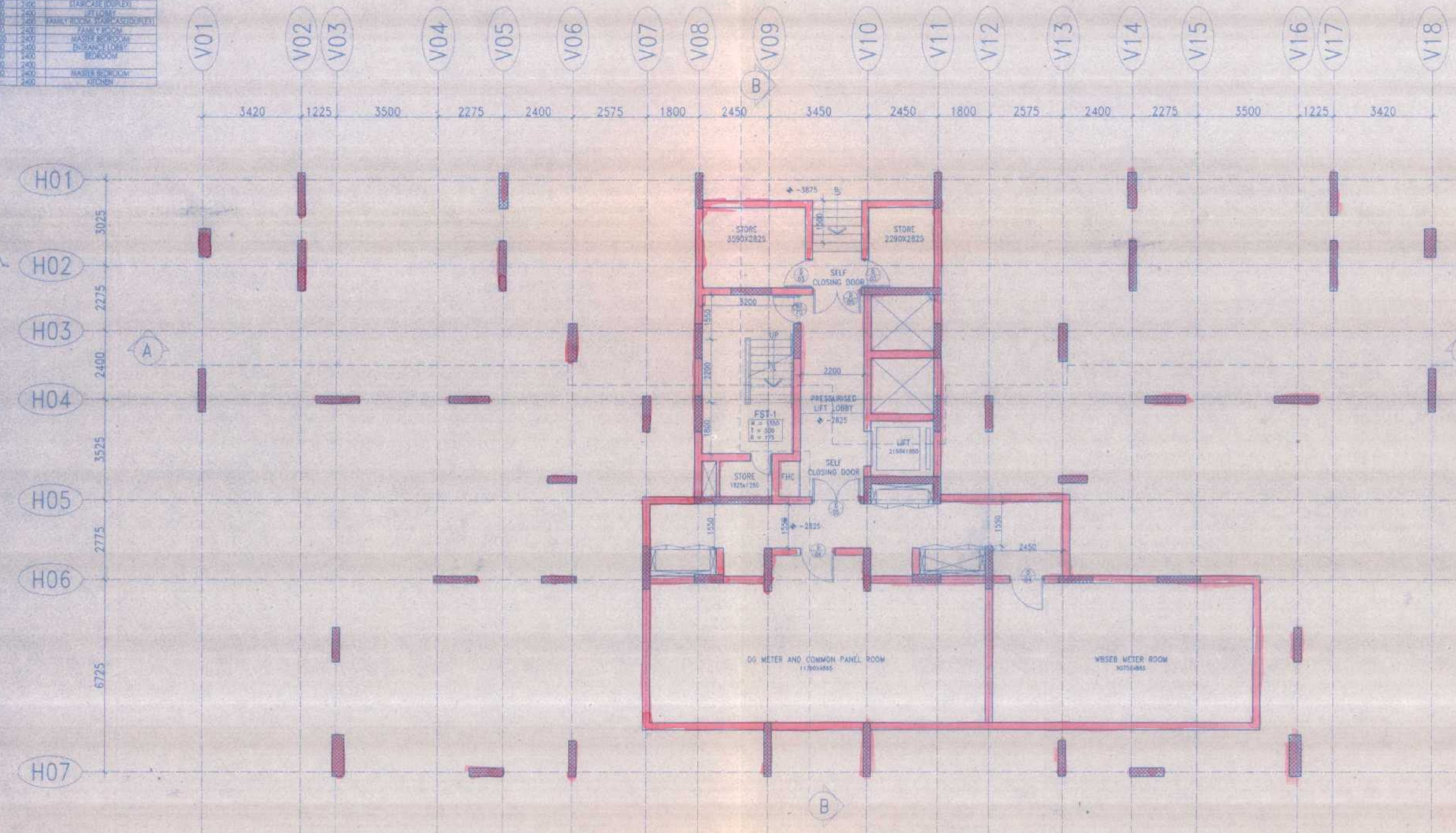
SCALE: 1:100
 DATE: 20.06.2012

DRAWING TITLE: **PHASE 5, TOWER 6 FLOOR PLANS**
 PROJECT NAME: **PROPOSED RESIDENTIAL DEVELOPMENT 'UNIWORLD CITY, PHASE 5' AT PLOT NO. AA-III/BLK-2/5 (PART) AT NEW TOWN, KOLKATA.**

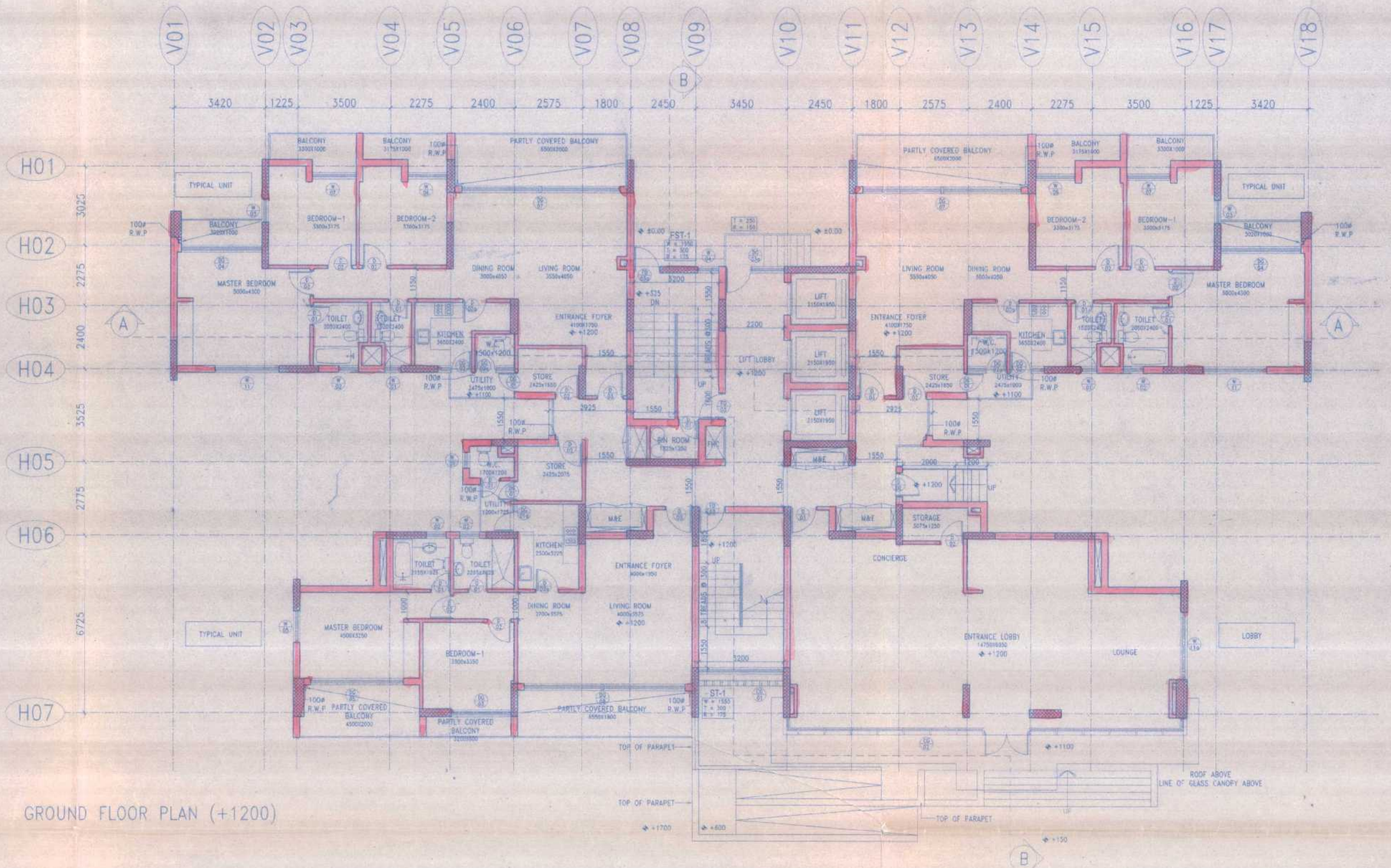
SUBMISSION DRAWING
 DRAWING NO:

FOR BUJPL
 SUBMITTED BY: **JE**
 SUBMITTED ON: **06.01.12**

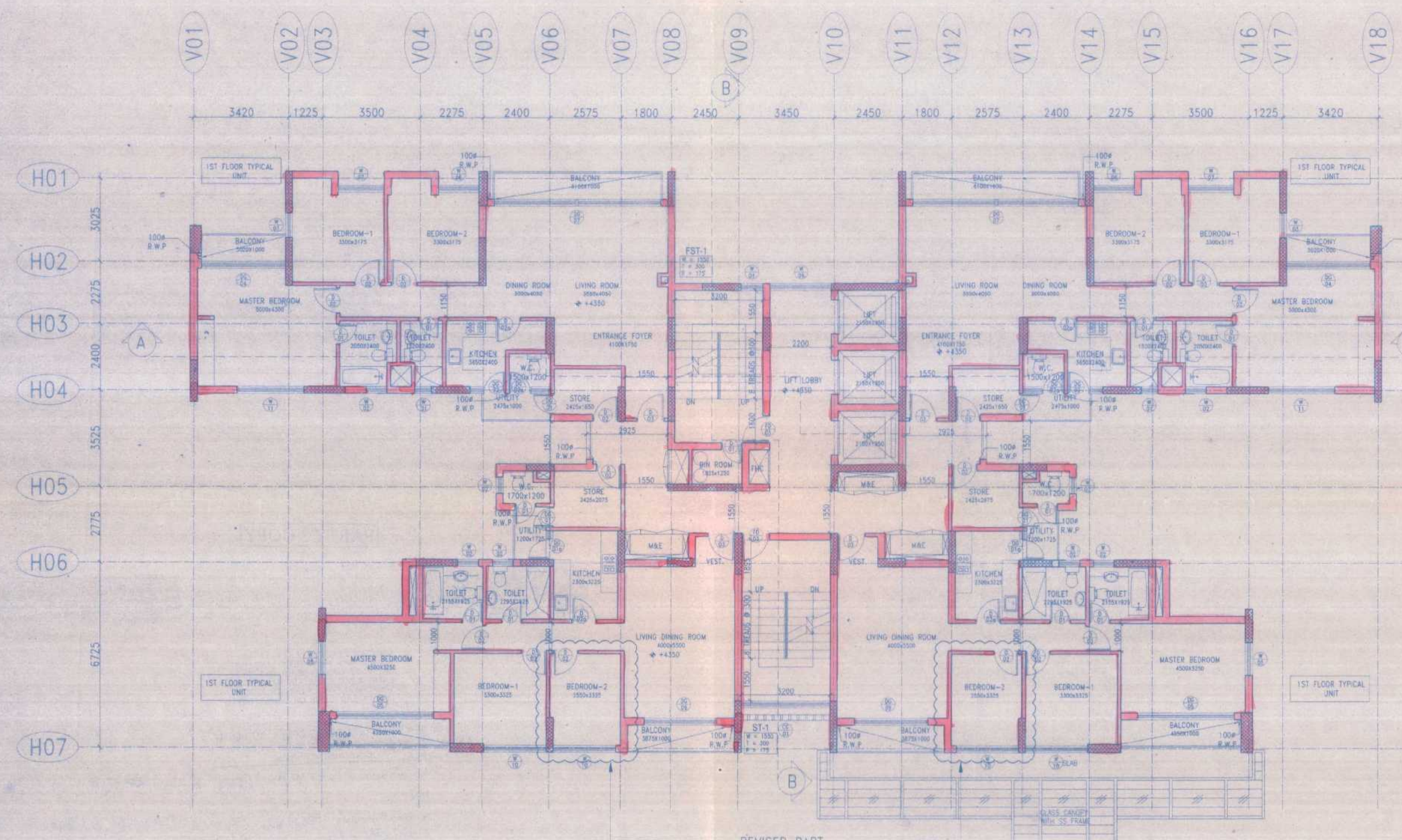
P5-(6)-1.01-R4



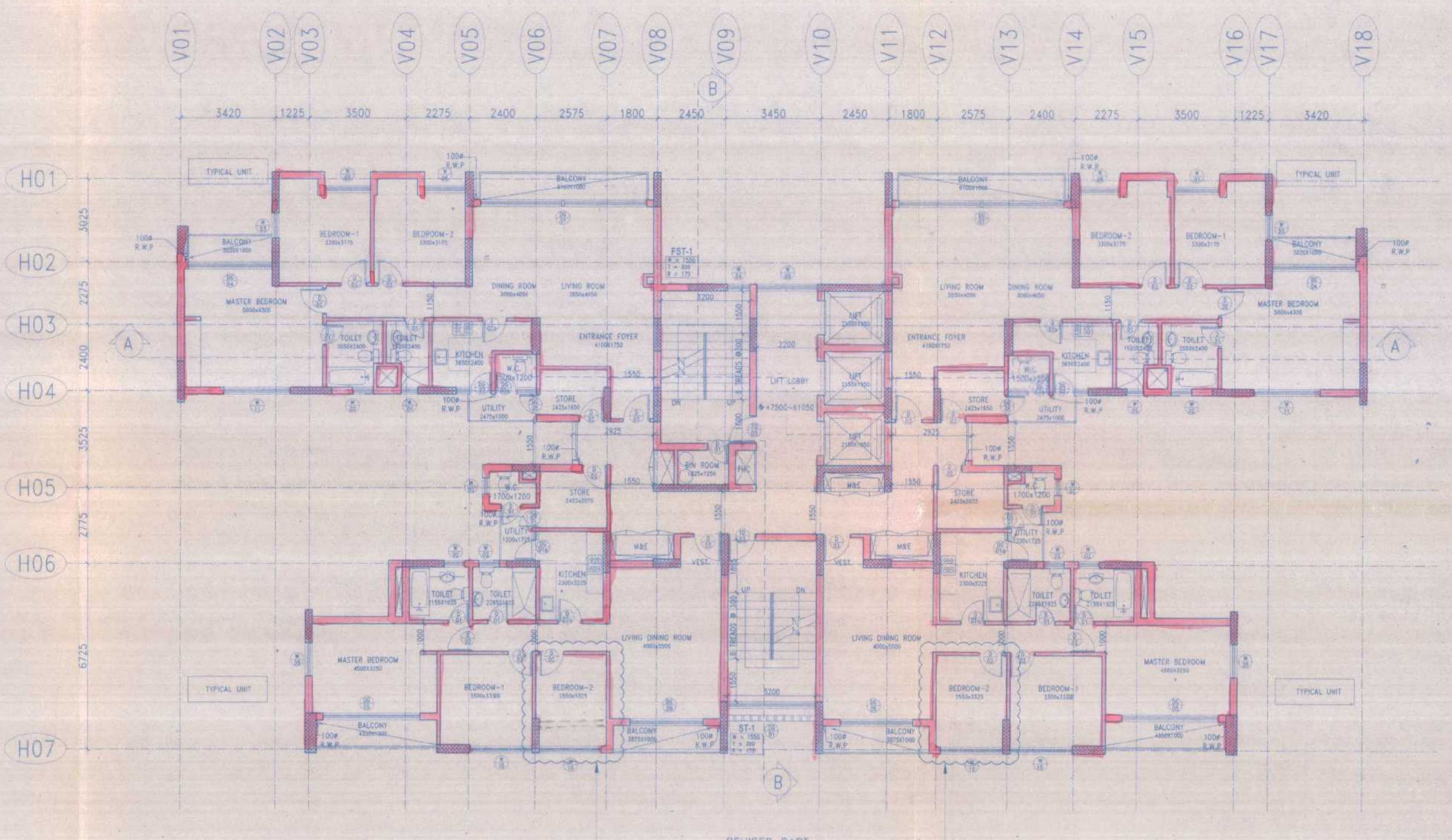
BASEMENT PLAN (-2825)



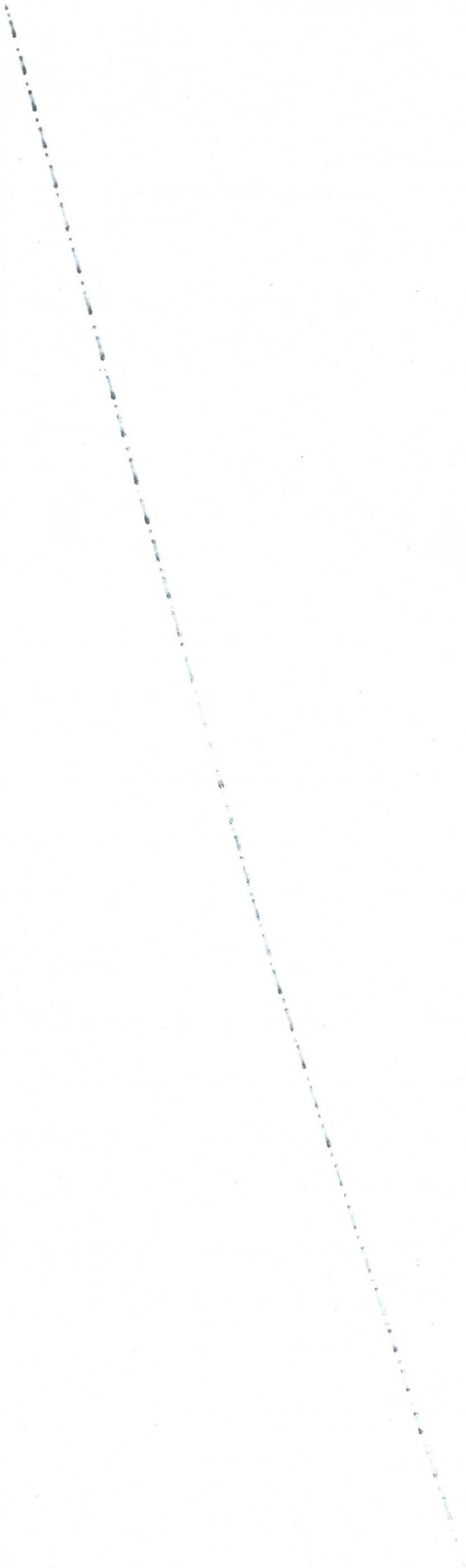
GROUND FLOOR PLAN (+1200)



FIRST FLOOR PLAN (+4350)



TYPICAL FLOOR PLAN +7500 ~ +61050 (2ND-19TH FLOOR)



PARTY'S COPY

STRUCTURAL DRAWINGS, STRUCTURAL DESIGN CALCULATIONS & SOIL TEST REPORT ARE NOT CHECKED AND KEPT FOR RECORDS ONLY.

APPROVED FOR CONSTRUCTION
Any unauthorized construction done in violation from approved building plan, after issuance of this permission, will warrant revocation of the construction permission.

LEVEL OF TOP OF THE BOX-DRAIN AND LEVEL OF EXISTING ENTRY ALONG THE PROPERTY LINE OF ANY PLOT SHOULD BE AT PAR. THIS ENTRY & DOT SHOULD BE MADE WITH TEMPORARY TYPE OF CONSTRUCTION, LIKE PAVING BLOCK OR EQUIVALENT.

Approval **NEW TOWN KOLKATA DEVELOPMENT AUTHORITY**
Professional Sanction of Building Plan for Construction Purpose

No. and date: 3163/NKDA/Engg. 27/2010, date: 08-10-12
PIN: X

Building Particulars: Proposed 'Rowing' [B+G+2S] & 'Rowing' [B+G+2S] of 'Urindark' city, Phase-B', Housing complex at Plot No. AA-III/ Bk. VII/B (Part), AII-III, New Town, Kolkata.


Chief Architect
New Town Kolkata Development Authority
J.R.D.