

SITE PLAN AT R.S. DAG NO.

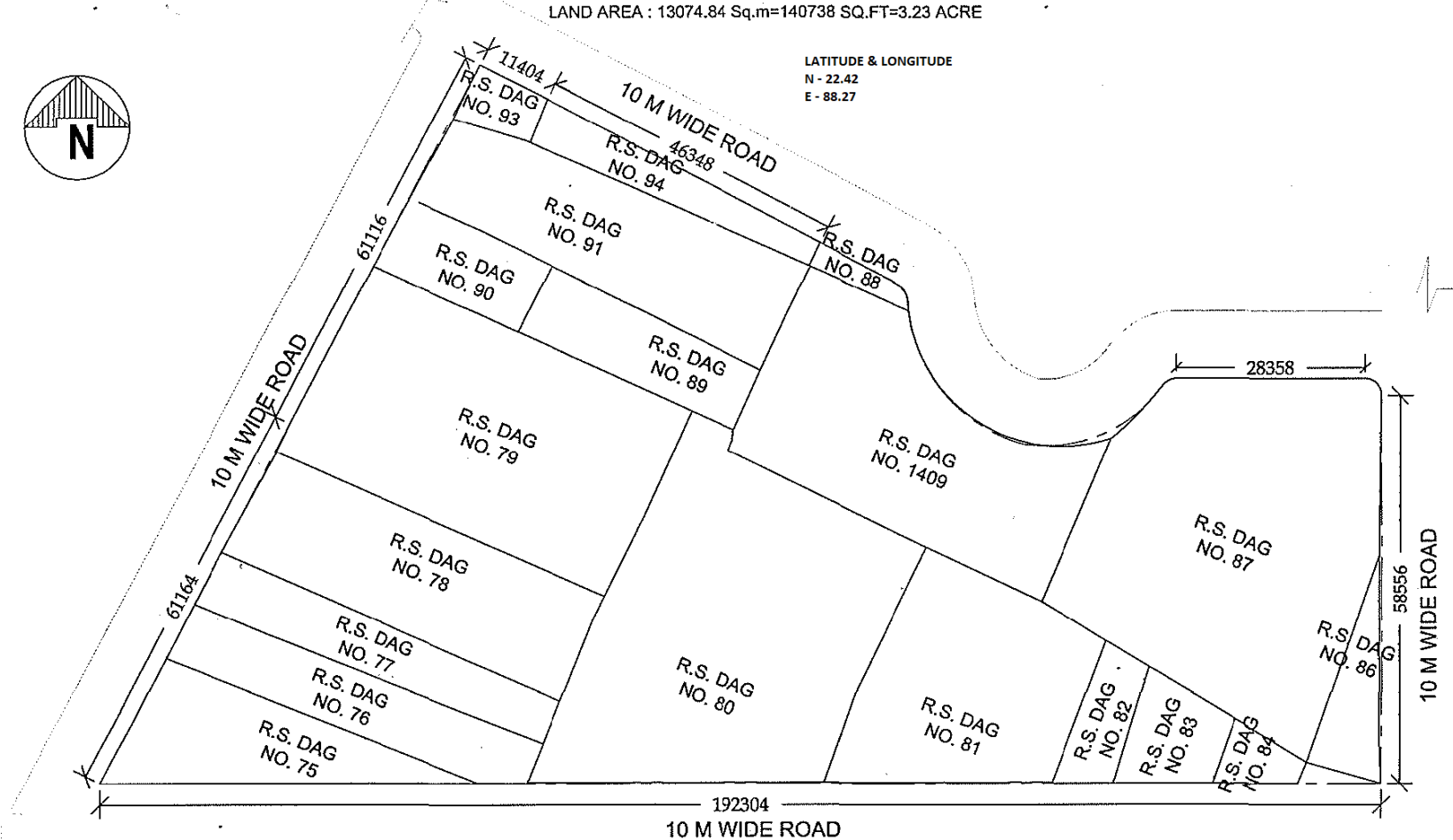
75(P),76(P),77(P),78(P),79(P),80(P),81(P),82(P),83(P),84(P),85(P),86(P),87(P),88(P),89(P),90(P),91(P),93(P),94(P),1409(P),406(P) MOUZA- UTTAR KAZIRAHT, J.L. NO -22, UNDER P.S. BISHNUPUR, P.O. RASAPUNJA, DIST- SOUTH 24 PARGANAS, UNDER PASCHIM BISHNUPUR GRAM PANCHAYAT.

LAND AREA : 13074.84 Sq.m=140738 SQ.FT=3.23 ACRE

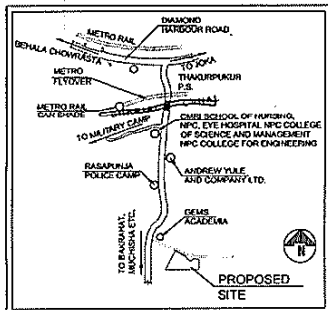
LATITUDE & LONGITUDE

N - 22.42

E - 88.27



SITE PLAN



LOCATION PLAN

ALL DIMENSION IN MM

Charles Commercial Pvt. Ltd.

Handwritten signature

Director

AUTHORIZED SIGNATORY