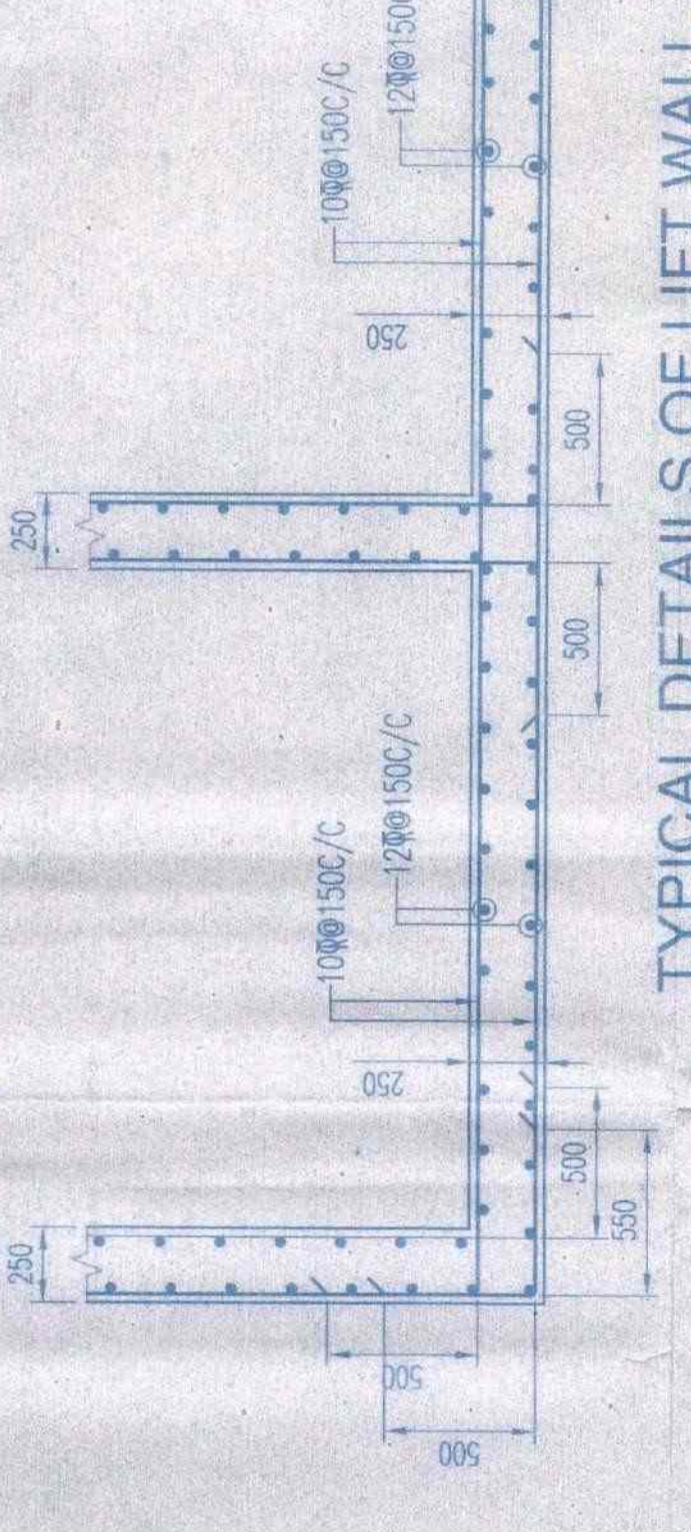
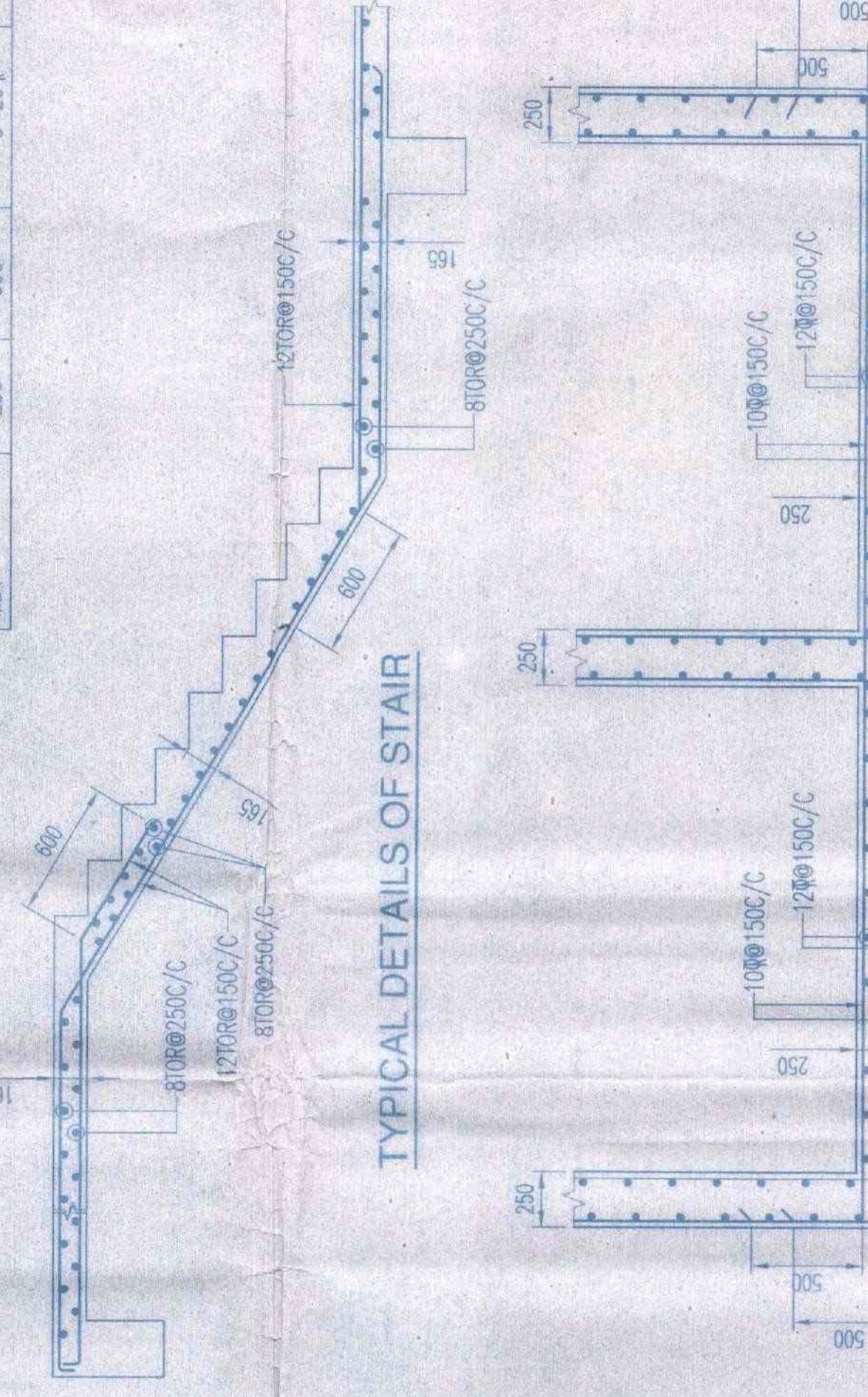
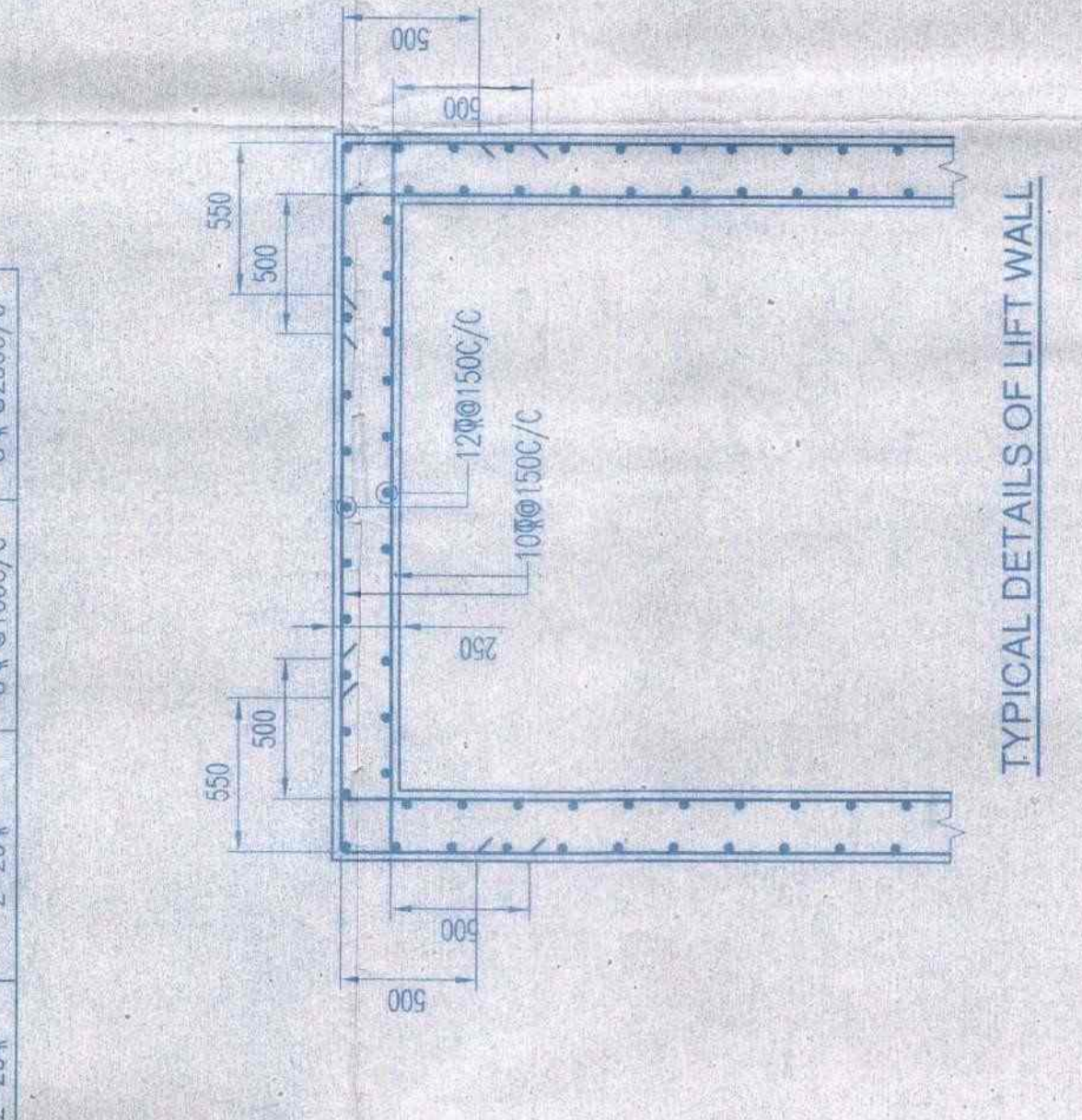


**TYPICAL 3RD TO 18TH FLOOR BEAM SCHEDULE**  
GRADE OF CONCRETE - M30

BEAM MKD	BEAM SIZE	DEPTH	REINFT. AT SUPPORT	REINFT. AT MID SPAN	STAIRUPS SUPPORT(0.3L)	STAIRUPS SPAN
B1	250	600	6-20#	2-20#	8 @ 100/C	8 @ 200/C
B2	250	600	3-20#	3-20#	8 @ 100/C	8 @ 200/C
B3	250	600	2-18#	2-18#	8 @ 100/C	8 @ 200/C
B4	250	600	2-20#	2-20#	8 @ 100/C	8 @ 200/C
B5	250	600	2-20#	2-20#	8 @ 100/C	8 @ 200/C
B6	250	600	2-20#	2-20#	8 @ 100/C	8 @ 200/C
B7	250	600	3-20#	3-20#	8 @ 100/C	8 @ 200/C
B8	250	600	3-20#	3-20#	8 @ 100/C	8 @ 200/C
B9	250	600	3-20#	3-20#	8 @ 100/C	8 @ 200/C
B10	250	600	3-20#	3-20#	8 @ 100/C	8 @ 200/C
B11	250	600	2-20#	2-20#	8 @ 100/C	8 @ 200/C
B12	250	600	2-20#	2-20#	8 @ 100/C	8 @ 200/C
B13	250	600	3-20#	3-20#	8 @ 100/C	8 @ 200/C
B14	250	600	2-18#	2-18#	8 @ 100/C	8 @ 200/C
B15	250	600	2-20#	2-20#	8 @ 100/C	8 @ 200/C
B16	250	600	2-18#	2-18#	8 @ 100/C	8 @ 200/C
B17	250	600	2-18#	2-18#	8 @ 100/C	8 @ 200/C
B18	250	600	2-20#	2-20#	8 @ 100/C	8 @ 200/C
MB1	250	600	3-20#	2-20#	8 @ 100/C	8 @ 200/C

**TYPICAL 18TH FLOOR BEAM SCHEDULE**  
GRADE OF CONCRETE - M30

BEAM MKD	BEAM SIZE	DEPTH	REINFT. AT SUPPORT	REINFT. AT MID SPAN	STAIRUPS SUPPORT(0.3L)	STAIRUPS SPAN
B1	250	600	6-20#	2-20#	8 @ 100/C	8 @ 200/C
B2	250	600	3-20#	3-20#	8 @ 100/C	8 @ 200/C
B3	250	600	2-18#	2-18#	8 @ 100/C	8 @ 200/C
B4	250	600	2-20#	2-20#	8 @ 100/C	8 @ 200/C
B5	250	600	2-20#	2-20#	8 @ 100/C	8 @ 200/C
B6	250	600	2-20#	2-20#	8 @ 100/C	8 @ 200/C
B7	250	600	3-20#	3-20#	8 @ 100/C	8 @ 200/C
B8	250	600	3-20#	3-20#	8 @ 100/C	8 @ 200/C
B9	250	600	3-20#	3-20#	8 @ 100/C	8 @ 200/C
B10	250	600	3-20#	3-20#	8 @ 100/C	8 @ 200/C
B11	250	600	2-20#	2-20#	8 @ 100/C	8 @ 200/C
B12	250	600	2-20#	2-20#	8 @ 100/C	8 @ 200/C
B13	250	600	3-20#	3-20#	8 @ 100/C	8 @ 200/C
B14	250	600	2-18#	2-18#	8 @ 100/C	8 @ 200/C
B15	250	600	2-20#	2-20#	8 @ 100/C	8 @ 200/C
B16	250	600	2-18#	2-18#	8 @ 100/C	8 @ 200/C
B17	250	600	2-18#	2-18#	8 @ 100/C	8 @ 200/C
B18	250	600	2-20#	2-20#	8 @ 100/C	8 @ 200/C
MB1	250	600	3-20#	2-20#	8 @ 100/C	8 @ 200/C



**NOTES:**  
 1. ALL DIMENSIONS ARE IN MM UNLESS OTHERWISE MENTIONED.  
 2. SHEET STRUCTURE: SUPER STRUCTURE SHALL BE OF 1ST CLASS BRICK IN 1:6 CEMENT MORTAR.  
 3. ALL MATERIALS SHALL CONFORM TO RELEVANT IS CODES.  
 4. ALL MATERIALS SHALL CONFORM TO RELEVANT IS CODES.  
 5. FOR STEEL GRADE F450 AS PER IS 1786-1979.  
 6. LWS, SPICES & BOND LENGTH SHOULD BE 50 Ø WHERE Ø IS THE SMALLEST BAR DIA.  
 7. FOUNDATION & PILING - BROCKING IN FOUNDATION & PILING SHALL BE OF 1ST CLASS BRICK IN 1:6 CEMENT MORTAR.  
 8. MINIMUM CLEAR COVER TO MAIN REINFORCEMENT IS AS FOLLOWS:  
 MEMBER TOP BOTTOM SIDE  
 a. FOUNDATION BEAM & SUB 50 50 50  
 b. COLUMN 40 40 40  
 c. THE BEAM 30 30 30  
 d. FLOOR BEAM 30 30 30  
 e. FLOOR SLAB 20 20 20  
 f. STAIR 20 20 20  
 g. PILECAP 50 50 50  
 9. THIS DRAWING IS THE PROPERTY OF M/S. SEA CONSULTANTS AND CANNOT BE COPIED OR USED WITHOUT THEIR WRITTEN PERMISSION.

FOR: **SEA CONSULTANTS PVT. LTD.**  
 Civil & Structural Engineers  
 88, ROYD STREET,  
 KOLKATA-700004

SIGNATURE OF OWNER: *[Signature]*  
 SIGNATURE OF LIAISON OFFICER: *[Signature]*

SIGNATURE OF STRUCTURAL ENGINEER: *[Signature]*  
 M. S. AGRAWAL  
 CHARTERED ENGINEER A.M.-05212  
 E.S.E.-170, A.M.C.

PROJECT: PROPOSED G+XVIII STORED (59.90 MTR. HT.) RESIDENTIAL BUILDING AT PREMISES NO. (26+27+28) I, FRESHORE ROAD, P.S. - SHIBPUR, DIST. - HOWRAH, UNDER HMC, WARD NO. - 36 BOROUGH NO. - IV, UNDER DAG NO. 193, 206, 207, KH. NO. - 36 (RS), MOUZA - SHIBPUR, SHEET NO. - 94.

THESE DRAWINGS ARE THE PROPERTY OF SEA CONSULTANTS PVT. LTD. AND CANNOT BE COPIED OR USED WITHOUT THEIR WRITTEN PERMISSION.

ARCHITECTS: **RAJ AGRAWAL & ASSOCIATES**  
 88, ROYD STREET,  
 KOLKATA-700004

STRUCTURAL ENGINEERS: **S.P.A. CONSULTANTS**  
 88, ROYD STREET,  
 KOLKATA-700004

RAJ AGRAWAL & ASSOCIATES  
 88, ROYD STREET,  
 KOLKATA-700004

STRUCTURAL ENGINEERS  
**S.P.A. CONSULTANTS**  
 88, ROYD STREET,  
 KOLKATA-700004

RAJ AGRAWAL & ASSOCIATES  
 88, ROYD STREET,  
 KOLKATA-700004

STRUCTURAL ENGINEERS  
**S.P.A. CONSULTANTS**  
 88, ROYD STREET,  
 KOLKATA-700004

RAJ AGRAWAL & ASSOCIATES  
 88, ROYD STREET,  
 KOLKATA-700004

STRUCTURAL ENGINEERS  
**S.P.A. CONSULTANTS**  
 88, ROYD STREET,  
 KOLKATA-700004

