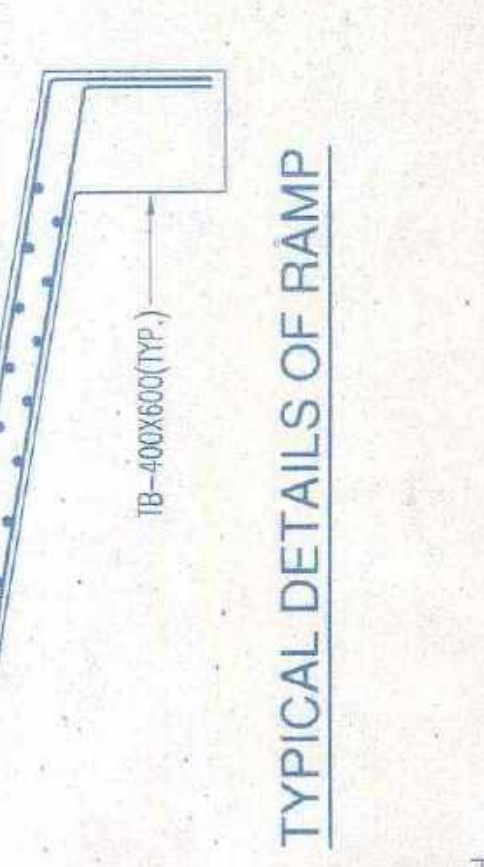
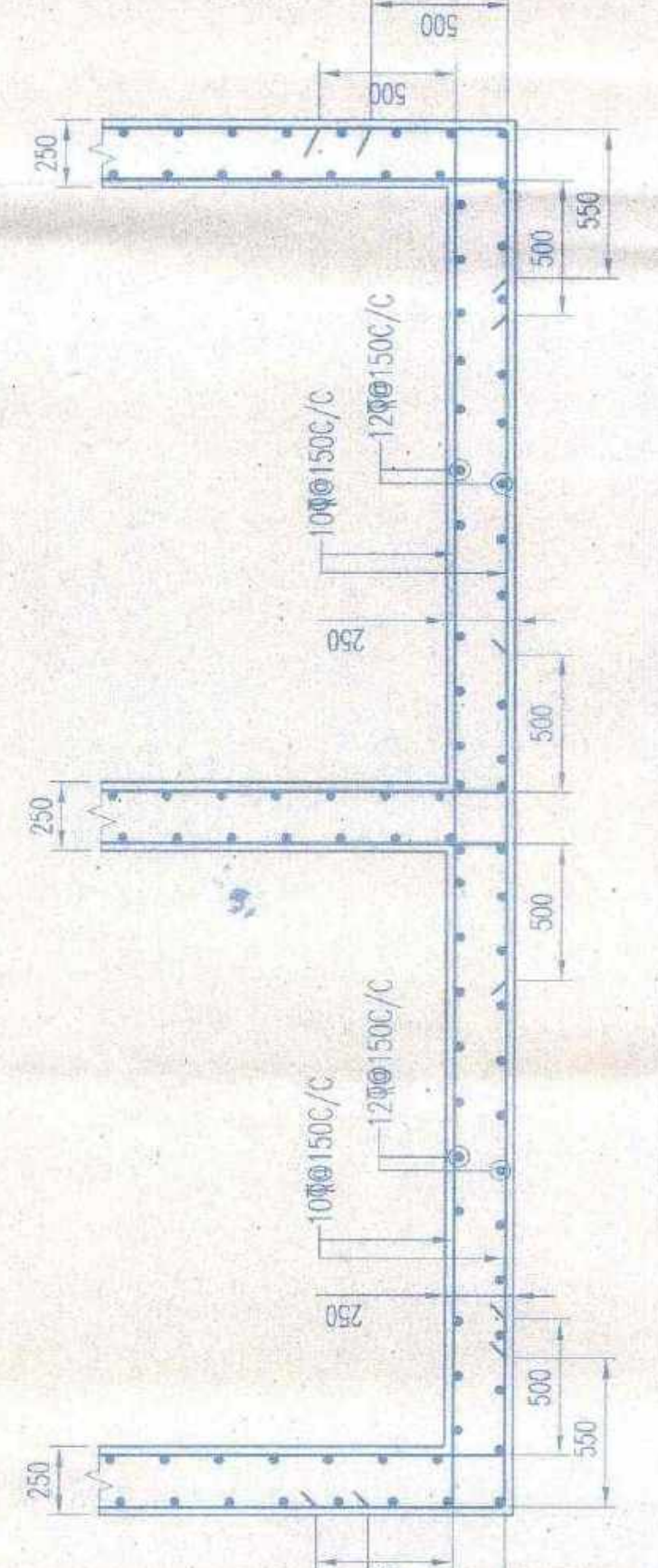
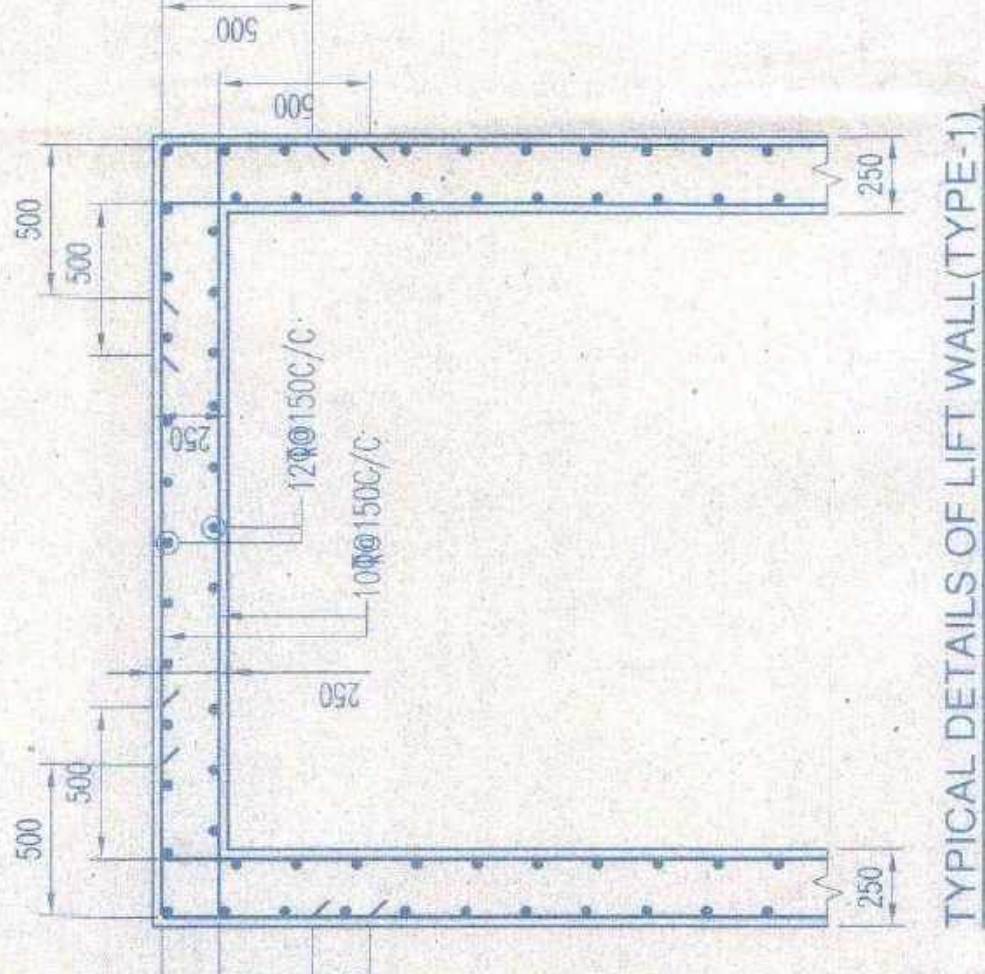


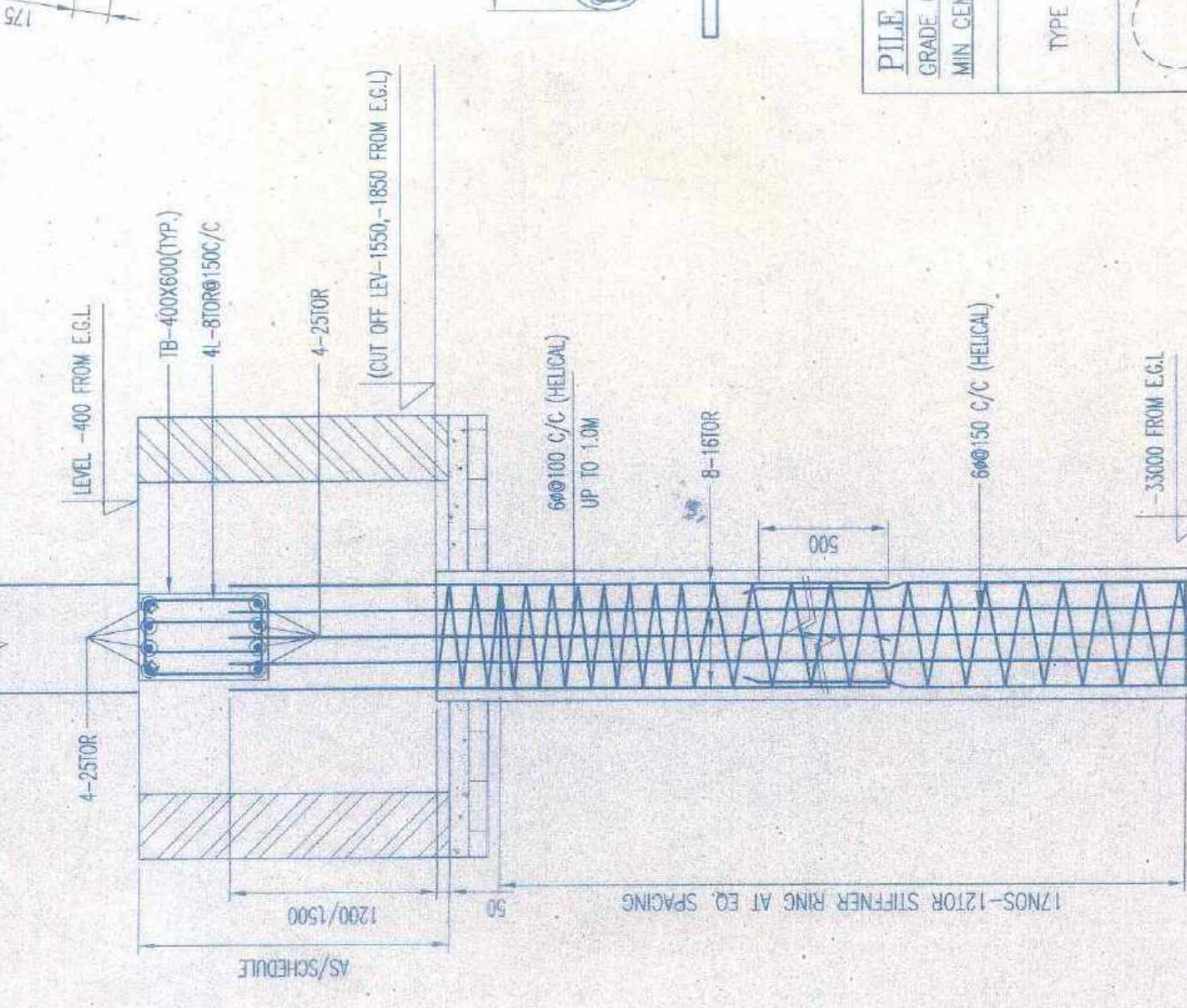
PILE CAP SCHEDULE
GRADE OF CONCRETE: M30

TYPE	SIZE	DEPTH	REINFORCEMENT IN SHORTER DIRECTION	REINFORCEMENT IN LONGER DIRECTION
P3	A5/706	1200	10 ϕ 1500/C (T) 10 ϕ 1500/C (B)	10 ϕ 1500/C (T) 10 ϕ 1500/C (B)
P4	2800x2800	1200	10 ϕ 1500/C (T) 20 ϕ 1500/C (B)	10 ϕ 1500/C (T) 20 ϕ 1500/C (B)
P5	3540x2546	1200	10 ϕ 1500/C (T) 20 ϕ 1500/C (B)	10 ϕ 1500/C (T) 20 ϕ 1500/C (B)
P6	2800x4600	1200	10 ϕ 1500/C (T) 20 ϕ 1250/C (B)	10 ϕ 1500/C (T) 20 ϕ 1000/C (B)
P7	A5/706	1500	20 ϕ 1500/C (T) 20 ϕ 1500/C (B)	20 ϕ 1500/C (T) 20 ϕ 1500/C (B)
PTA	A5/706	1500	10 ϕ 1500/C (T) 20 ϕ 1250/C (B)	10 ϕ 1500/C (T) 20 ϕ 1500/C (B)
LT1	4118x4400	1500	20 ϕ 1500/C (T) 20 ϕ 1500/C (B)	20 ϕ 1500/C (T) 20 ϕ 1500/C (B)
LT1A	4118x4400	1500	20 ϕ 1500/C (T) 20 ϕ 1500/C (B)	20 ϕ 1500/C (T) 20 ϕ 1500/C (B)

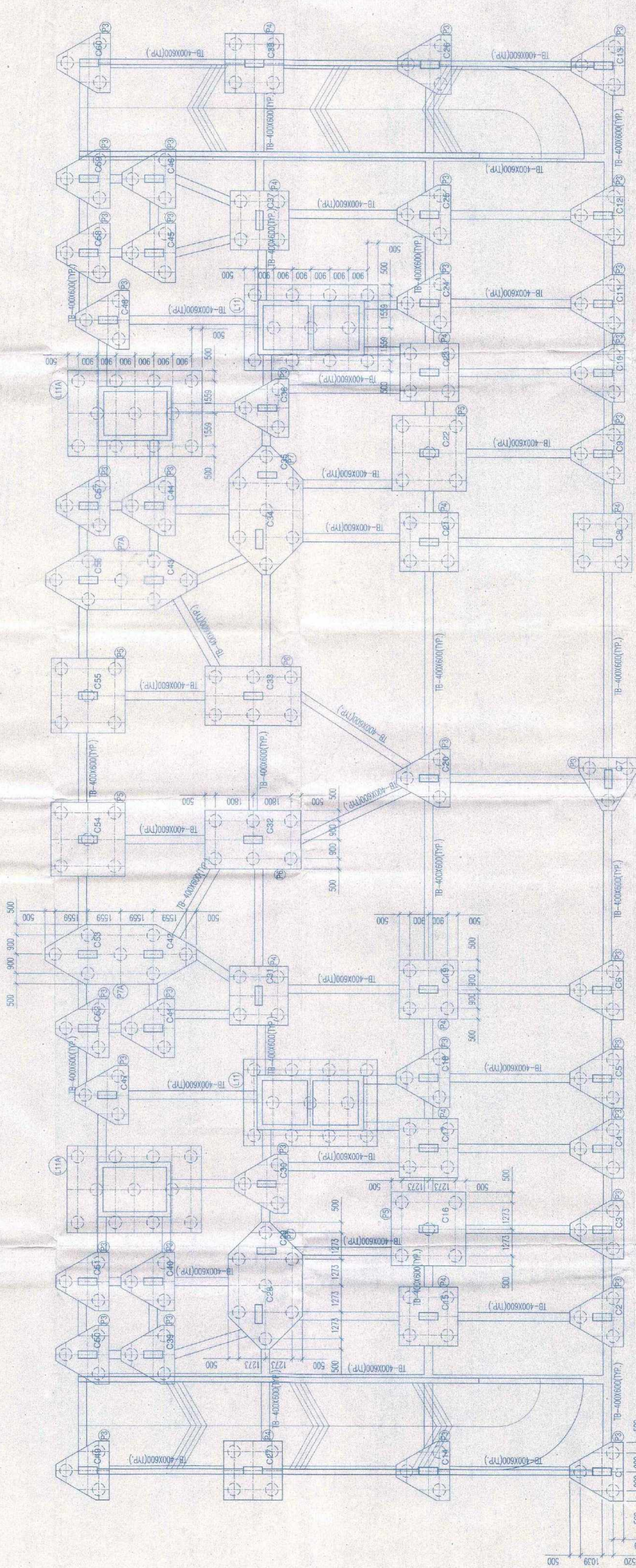


PILE SCHEDULE
GRADE OF CONCRETE: M30
MIN. CHARACTER STRENGTH IN CONCRETE SHALL BE $\geq 40000 \text{ kg/cm}^2$

TYPE	ØM OF PILE	REINFORCEMENT	CAPACITY
	600	8-10 ϕ	140.0T



TYPICAL DETAIL OF R.C.C. WALL FOR RAMP



NOTES:-

- ALL DIMENSIONS ARE IN MM UNLESS OTHERWISE MENTIONED.
- SHRIMP STRUCTURE - SUPER STRUCTURE SHALL BE OF 1ST CLASS.
- BACK IN 1:8 GRADY SLOPE.
- ALL MATERIALS SHALL CONFORM TO PRESENT I.S. CODES.
- FOR STEEL GRADE F430/AS PER IS 708-2008.
- MINIMUM CLEAR COVER TO MAIN REINFORCEMENT IS AS FOLLOWS:
- FOUNDATION & PILE - BRICKWORK IN FOUNDATION & PILE SHALL BE OF 1ST CLASS BRICK IN 1:6 CEMENT MORTAR.
- MINIMUM CLEAR COVER TO MAIN REINFORCEMENT IS AS FOLLOWS:

MEMBERS

MEMBER	TOP	BOTTOM	SIZE
a. FOUNDATION BEAM & PILE	50	50	50
b. COLUMN	30	30	40
c. TIE BEAM	30	30	30
d. FLOOR BEAM	30	30	30
e. FLOOR SLAB	20	20	20
f. PILE	-	-	50
g. FLOOR SLAB	50	50	50

For: **Shree Concrete Pvt. Ltd.**
By: **Consultant Engineer**
Bangalore

SIGNATURE OF OWNER
Raj Kumar Agrawal
DIRECTOR

SIGNATURE OF C.E.
S. J. PAREKH
CHARTERED ENGINEER (A.M.) 05312
E.S.E. - 170 - H.M.C.

REMARKS OF STRUCTURAL ENGINEER
SANJIV PAREKH
CHARTERED ENGINEER (A.M.) 05312
E.S.E. - 170 - H.M.C.

PROJECT
PROPOSED G+XVIII STORED (S9 90
MTR. HT.) RESIDENTIAL BUILDING
AT PREMISES NO. 06-27-28VI,
FORESHORE ROAD, P.S. - SHIBPUR,
DIST. - HOWRAH UNDER H.M.C.
WARD NO. - 36 BOROUGH NO. - IV,
UNDER DAG NO. 193, 206, 207, KH.
NO. - 56 (RS), MOUZA - SHIBPUR,
SHEET NO. - 94.

TITLE
CORPORATION DRAWING
1ST AND 2ND FLOOR BEAM LAYOUT
(BLOCK 1 & 2)

ARCHITECTS
RAJ AGRAWAL & ASSOCIATES
88, ROYD STREET,
KOLKATA - 700 001

STRUCTURAL ENGINEERS
S.P.A. CONSULTANTS
20, JUSTICE CHANDRA MOHAN ROAD
KOLKATA - 700 001

