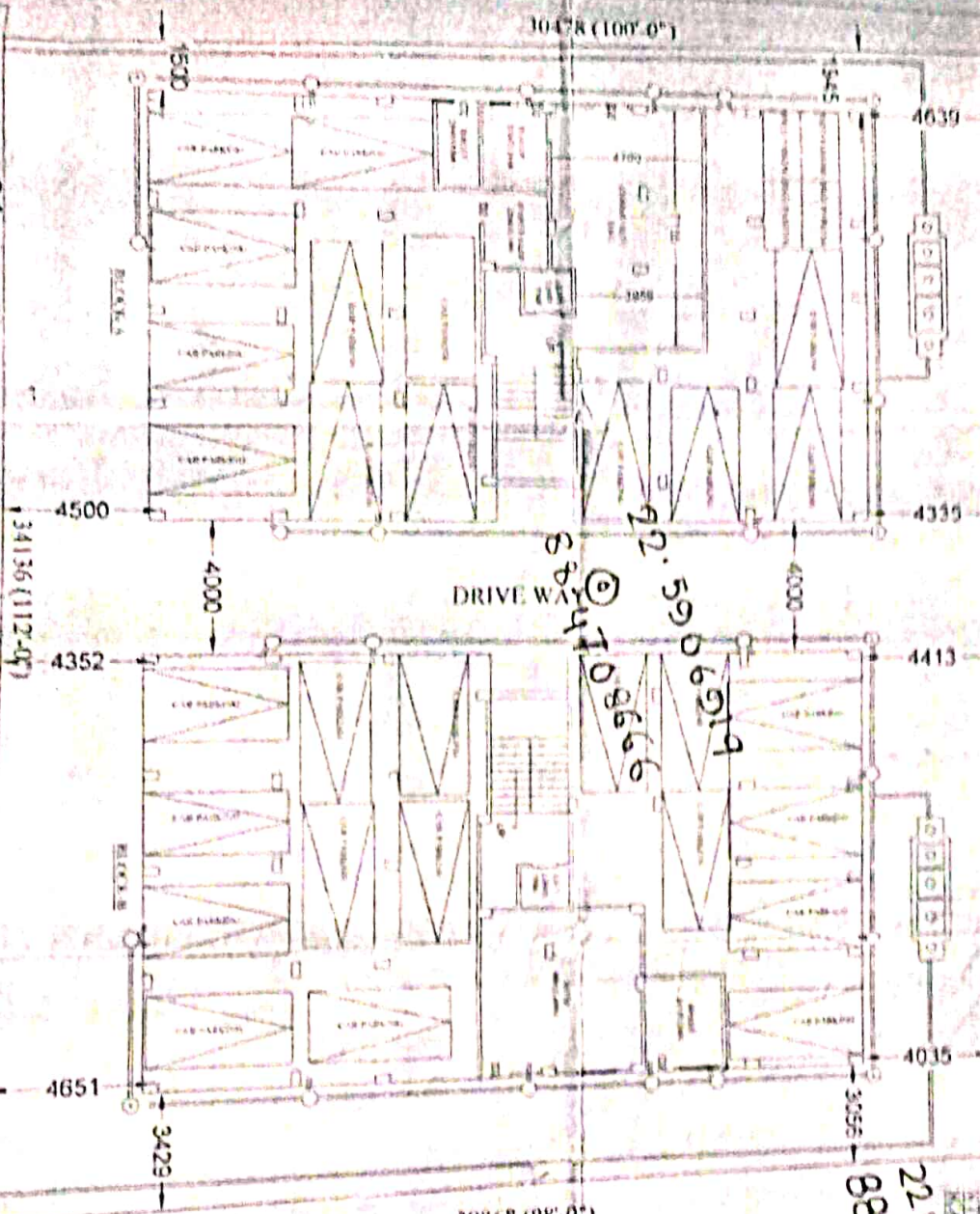


22.590518
88.470611

22.5905034
88.4708874

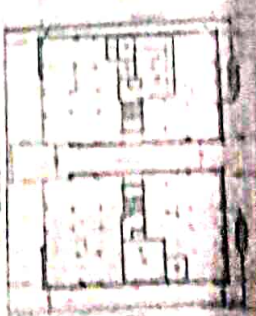
700MM PANCHAYET ROAD
GROUND FLOOR PLAN



88.470819
22.590819

SUSMITA BISWAS
LBS/1/1617
KOLKATA MUNICIPAL CORPORATION

88.4707841
22.5908420



PREPARED BY AN AUTODESK EDUCATIONAL PRODUCT

STATEMENT OF THE CLIENT
M/S. MUKTA RESIDENCIAL PRIVATE LIMITED
No. 10, Park Street, Kolkata - 700016

AREA STATEMENT
AREA OF LAND: 2100 sq. m.
AREA OF BUILDING: 2100 sq. m.

PREPARED BY: SUSMITA BISWAS
LBS/1/1617
KOLKATA MUNICIPAL CORPORATION

GROUND FLOOR DATA AREA:
BLOCK A: 2100 sq. m.
BLOCK B: 2100 sq. m.

TYPICAL FLOOR DATA AREA:
BLOCK A: 2100 sq. m.
BLOCK B: 2100 sq. m.

OPEN AREA: 2100 sq. m.

CERTIFICATE OF THE ARCHITECT
I CERTIFY THAT ALL DIMENSIONS, PLANNING OF THE BUILDING, AND THE DETAILS OF THE BUILDING ARE IN ACCORDANCE WITH THE REGULATIONS OF THE MUNICIPAL CORPORATION AND THE MUNICIPAL ACT.

SIGNATURE OF ARCHITECT
Susmita Biswas
LBS/1/1617
KOLKATA MUNICIPAL CORPORATION