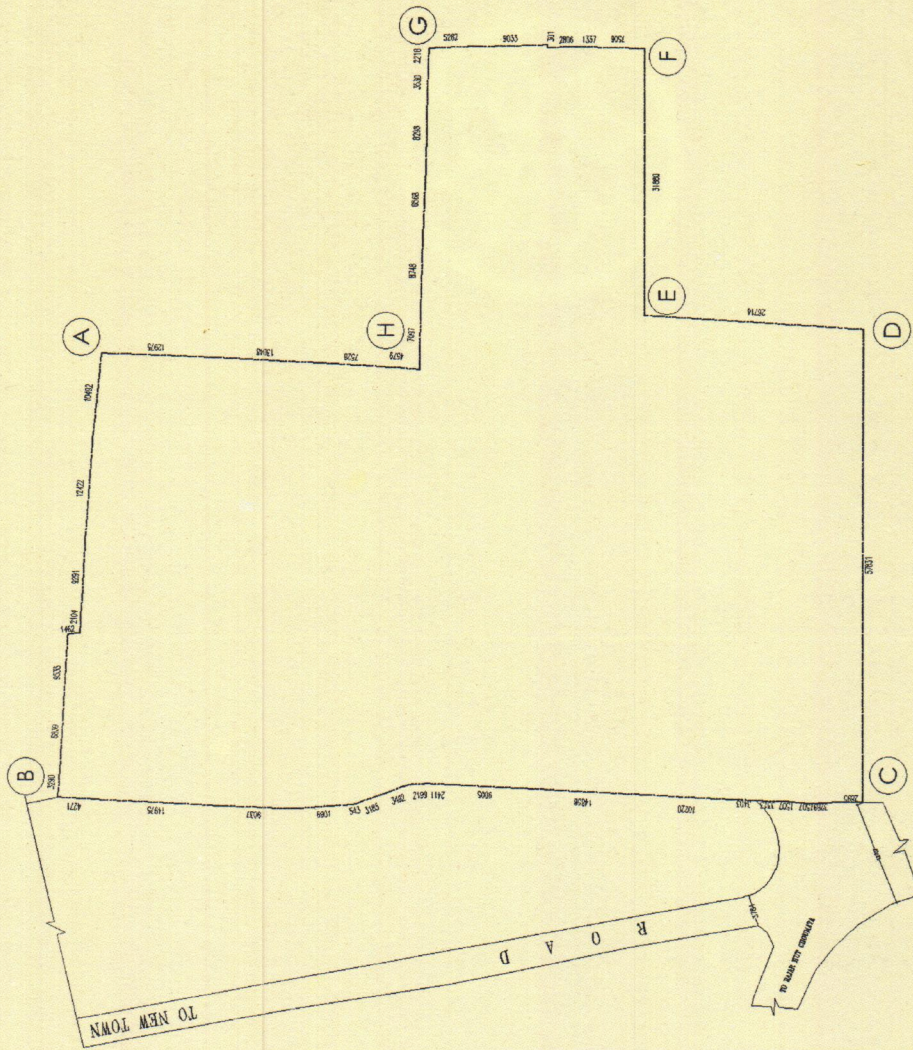




FRESHIA

Good Morning, LIFE!

SITE PLAN SHOWING LAND BEING DEVELOPED BY ASPIRA LOHARUKA DEVELOPERS LLP COMPRISED IN L.R. DAG No. - 3676, 3678, 3679 & 3680, MOUZA - GOPALPUR, J.L. No. 2, P.S. - AIRPORT, UNDER BIDHANNAGAR MUNICIPAL CORPORATION, DIST. - 24 PRGS (N)



- A) Longitude: 88° 27' 56.7" E
Latitude: 22° 38' 32.3" N
- B) Longitude: 88° 27' 58.6" E
Latitude: 22° 38' 31.8" N

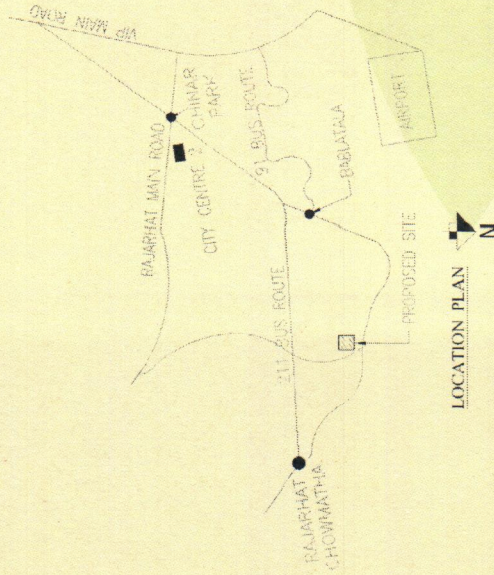
- C) Longitude: 88° 27' 57.6" E
Latitude: 22° 38' 28.7" N
- D) Longitude: 88° 27' 55.9" E
Latitude: 22° 38' 29.4" N

- E) Longitude: 88° 27' 56.3" E
Latitude: 22° 38' 30.5" N
- F) Longitude: 88° 27' 55.1" E
Latitude: 22° 38' 30.9" N

- G) Longitude: 88° 27' 55.5" E
Latitude: 22° 38' 32.0" N
- H) Longitude: 88° 27' 56.5" E
Latitude: 22° 38' 31.6" N

ASPIRA LOHARUKA DEVELOPERS LLP

CIN: AAD-9967



ASPIRA LOHARUKA DEVELOPERS LLP
Jagan Dixit
Designated Partner